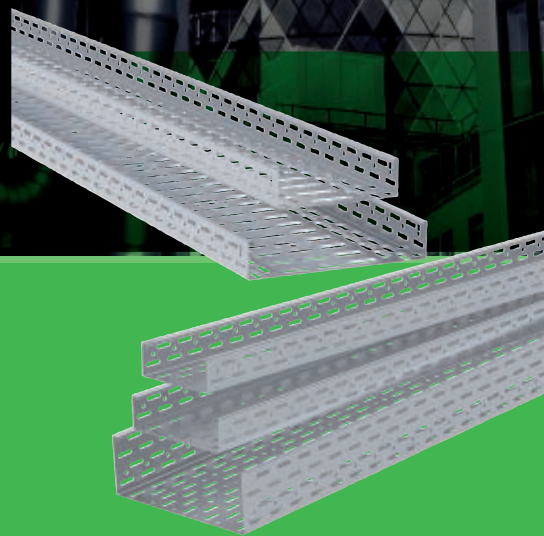


Stago cable tray system

Catalogue 11-2018
Steel cable trays



schneider-electric.com

Life Is On

Schneider
Electric

Cable Support is BIM Ready



Discover and download our Cable Support BIM models today by clicking or scanning the QR code.



If you're an architect, engineer, or contractor working on a BIM (Building Information Modeling) project design, you can now take advantage of Schneider Electric's comprehensive and user-friendly online BIM models library.

Here you can download from a wide range of BIM models and benefit from features we provide such as a support system, video explanations, customized selection components, extended-schedule generation, as well as size-error detection.

So rest assured, we have the perfect Cable Support BIM model for you to integrate into your project, so you can benefit from a design process that is intuitive, collaborative, and easy-to-configure.



KB284 cable trays	6
KB184 cable trays	19
Support system	35
Index	42
Note	46



Stago cable trays

Durable cable trays for all types of installations

The Stago Cable Tray System consists of cable trays, covers, separation walls, form pieces, mounting accessories, wall and ceiling supports, and much more to provide standard and customized solutions.

Features

With the expertise in roll forming and cable support manufacturing, Schneider Electric offers a large assortment of universal accessories, screwless fixation solutions, modular accessories and easy to use form pieces for a speedy and efficient installation.

Every installation is unique and requirements may vary. We provide comprehensive solutions and product customization is key to providing a tailored and optimized system for all of our customers' needs.

Specifications

- > Materials: pre-galvanized sheet steel and zinc+ sheet steel
- > Available heights: 35 mm, 60 mm, 85 mm, and 110 mm
- > Standard cable tray lengths: 3 m
- > Standard cover lengths: 2 m

Subranges

- > KB184 unperforated cable trays available in pre-galvanized sheet steel and zinc+ sheet steel material
- > KB284 cable trays with standard perforation pattern and base reinforcement for optimal performance. Available in pre-galvanized sheet steel and Zinc+ sheet steel material

Benefits

Simple and fast

Thanks to the wide range of screwless accessories Stago cable trays are quick and easy to install.

With efficiency in mind

Smart and universal accessories with flat form pieces to simplify purchasing, shipping, storage and assembly of procedures for our customers.

Ideal lengths

Certain applications demand cable trays longer or shorter than the market standard. With our customization workshop, customers can order the length they require and save the time that would have been needed to cut the cable trays on site.

More than grey and white

Besides the mere metals, Stago offers RAL 1013, RAL 9016, RAL 9010 and RAL 1023 colors as standard and has the possibility to powder coat cable trays into any requested color. Apply your own corporate colors on our system to make it fit in to any environment.

Optimized support system

The single pendant support with robust consoles leaves one side open, allowing fast and easy cable management. Suits all types of cable support and busbars.



Applications

Stago cable trays are designed for a wide range of environments in various industries, such as:

C2 Pre-galvanized

Partly outdoor environments: industries, sports halls, warehouses, shops, rural outdoor areas etc.

Low environmental corrosion.

Non-heated areas with fluctuating levels of temperature and humidity.

Few instances of condensation and low levels of airborne pollution.

EN 10346.

C3 Zinc+

Indoor and outdoor environments: urban and light industrial areas, breweries, dairies, laundries etc.

Average environmental corrosion.

Areas with average levels of humidity and some airborne pollution caused by production processes.

Atmospheres containing some salt or average levels of airborne pollution.

EN 10346.

C4 Zinc+

Indoor and outdoor environments: industrial and coastal areas, swimming pools, etc.

High environmental corrosion.

Areas with high levels of humidity and considerable airborne pollution.

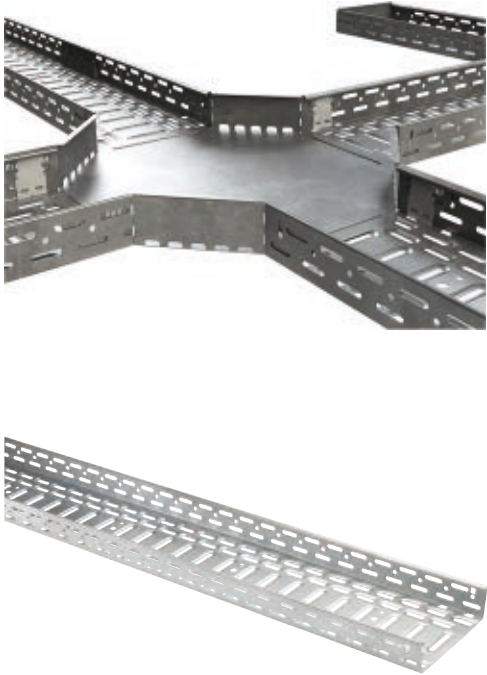
Atmospheres with average salt content or discernible levels of airborne pollution.

EN 10346.

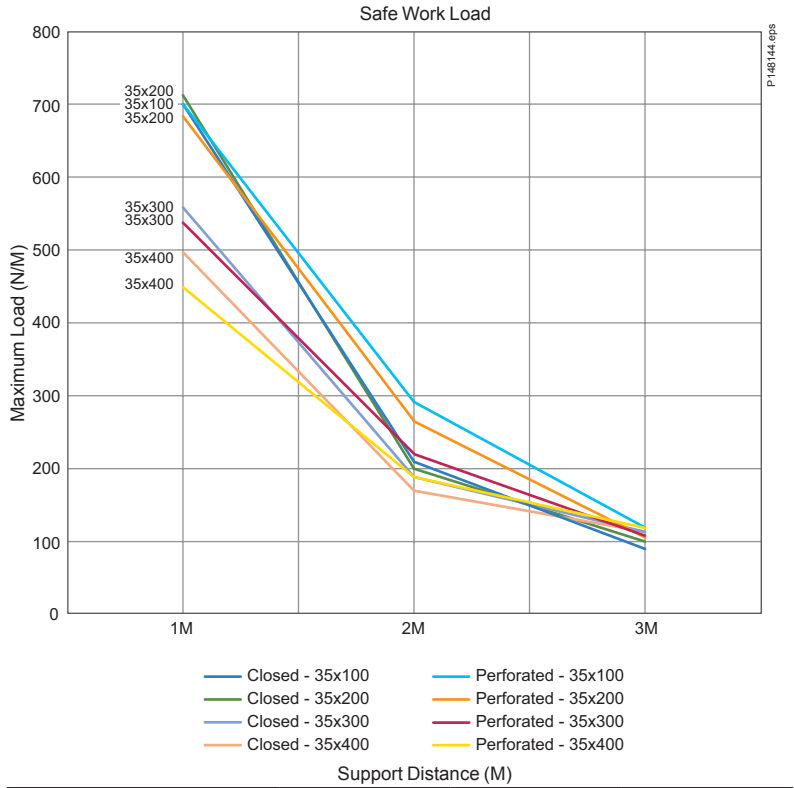
IEC 61537 specifies requirements and tests for cable tray systems and cable ladder systems intended for the support and accommodation of cables and possibly other electrical equipment in electrical and/or communication systems installation (CB certificate Nr.CE030CBES1801-M2).

KB284 cable trays

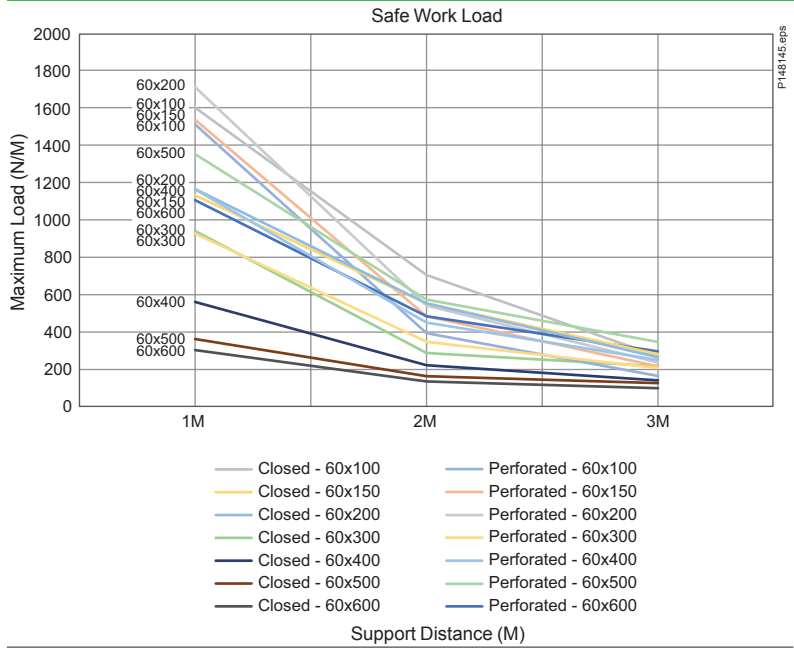
Safety working load diagrams



KB284 - H = 35



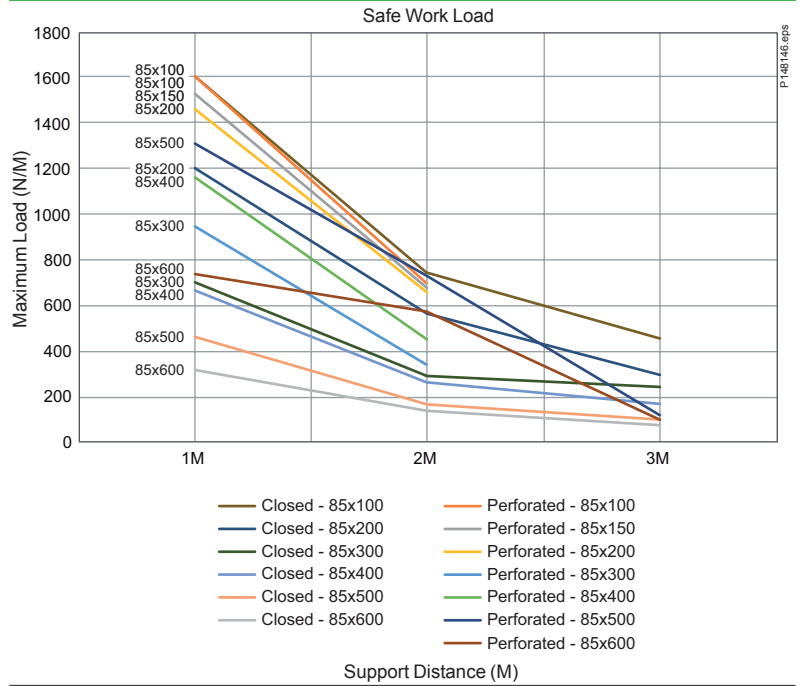
KB284 - H = 60



KB284 cable trays

Safety working load diagrams

KB284 - H = 85

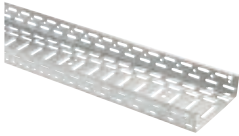


KB284 cable trays

Pre-galvanized

Length material

Type	Dimensions A/B (mm)	Length C (mm)	Weight kg/pcs	Ref. No.
Cable tray perforated L = 3000 mm				
Perforated steel cable tray for routing cables throughout the system. Designed with rounded safety edges to protect cables and bottom reinforcement for enhanced performance. Connect individual lengths by using screless Unilock joint or by screw type coupler with M6 bolts & nuts. Material: sheet steel, Pre-galvanized.				
Cable tray perforated 35x100	35x100	3000		CSU23011002
Cable tray perforated 35x150	35x150	3000		CSU23011502
Cable tray perforated 35x200	35x200	3000		CSU23012002
Cable tray perforated 35x300	35x300	3000		CSU23013002
Cable tray perforated 35x400	35x400	3000		CSU23014004
Cable tray perforated 60x70	60x70	3000		CSU76010702
Cable tray perforated 60x100	60x100	3000		CSU26011002
Cable tray perforated 60x150	60x150	3000		CSU26011502
Cable tray perforated 60x200	60x200	3000		CSU26012002
Cable tray perforated 60x300	60x300	3000		CSU26013002
Cable tray perforated 60x400	60x400	3000		CSU26014002
Cable tray perforated 60x500	60x500	3000		CSU26015004
Cable tray perforated 60x600	60x600	3000		CSU26016004
Cable tray perforated 85x100	85x100	3000		CSU28011002
Cable tray perforated 85x150	85x150	3000		CSU28011502
Cable tray perforated 85x200	85x200	3000		CSU28012002
Cable tray perforated 85x300	85x300	3000		CSU28013002
Cable tray perforated 85x400	85x400	3000		CSU28014002
Cable tray perforated 85x500	85x500	3000		CSU28015004
Cable tray perforated 85x600	85x600	3000		CSU28016004



csu26012002.jpg

Cable tray closed L = 3000 mm				
Non-perforated steel cable tray for routing cables throughout the system. Designed with rounded safety edges to protect cables. Connect individual lengths by using screless Unilock joint or by screw type coupler with M6 bolts & nuts. Material: sheet steel, Pre-galvanized.				
Cable tray closed 35x100	35x100	3000		CSU73001002
Cable tray closed 35x150	35x150	3000		CSU73001502
Cable tray closed 35x200	35x200	3000		CSU73002002
Cable tray closed 35x300	35x300	3000		CSU73003002
Cable tray closed 35x400	35x400	3000		CSU73004004
Cable tray closed 60x70	60x70	3000		CSU76000702
Cable tray closed 60x100	60x100	3000		CSU76001002
Cable tray closed 60x150	60x150	3000		CSU76001502
Cable tray closed 60x200	60x200	3000		CSU76002002
Cable tray closed 60x300	60x300	3000		CSU76003002
Cable tray closed 60x400	60x400	3000		CSU76004002
Cable tray closed 60x500	60x500	3000		CSU76005004
Cable tray closed 60x600	60x600	3000		CSU76006004
Cable tray closed 85x100	85x100	3000		CSU78001002
Cable tray closed 85x150	85x150	3000		CSU78001502
Cable tray closed 85x200	85x200	3000		CSU78002002
Cable tray closed 85x300	85x300	3000		CSU78003002
Cable tray closed 85x400	85x400	3000		CSU78004002
Cable tray closed 85x500	85x500	3000		CSU78005004
Cable tray closed 85x600	85x600	3000		CSU78006004



csu08004004.jpg

Cover L = 2000 mm				
Optional cover can be mounted for enhanced cable protection against dust, fluids, UV etc. Delivered in 2 m length. Snap-on fixation to cable trays by using universal cover clamp (CSU08855000). Material: sheet steel, Pre-galvanized.				
Cover 70	70	2000		CSU08161003
Cover 100	100	2000		CSU08161103
Cover 150	150	2000		CSU08161503
Cover 200	200	2000		CSU08163003
Cover 300	300	2000		CSU08164303
Cover 400	400	2000		CSU08166004
Cover 500	500	2000		CSU08167004
Cover 600	600	2000		CSU08168004



csu08164303.jpg

Length material

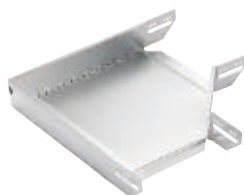
Type	Dimensions A/B (mm)	Length C (mm)	Weight kg/pcs	Ref. No.
Separation wall L = 3000 mm				
Use separation wall to create divided compartments in the cable tray length material. Fix to cable tray by using screwless grendel clamp (height 60 only) or by using M6x10 bolts & nuts. Material: sheet steel, Pre-galvanized.				
Separation wall 35	35	3000		CSU73020000
Separation wall 60	60	3000		CSU76020000
Separation wall 85	85	3000		CSU78020000



P146803.jpg

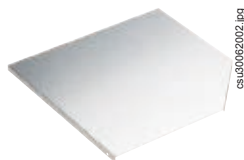
Form pieces

Type	Dimensions A/B (mm)	Weight kg/pcs	Ref. No.
90° Bend			
Can be used to construct horizontal 90° direction changes at any desired position in the cable tray. Use screwless fixing clip for flat form pieces (CSU08856050) or M6x10 bolts & nuts to fix to the cable tray. Material: sheet steel, Pre-galvanized.			
90° Bend 35x100	35x100		CSU33061002
90° Bend 35x150	35x150		CSU33061502
90° Bend 35x200	35x200		CSU33062002
90° Bend 35x300	35x300		CSU33063002
90° Bend 35x400	35x400		CSU33064002
90° Bend 60x70	60x70		CSU36060702
90° Bend 60x100	60x100		CSU36061002
90° Bend 60x150	60x150		CSU36061502
90° Bend 60x200	60x200		CSU36062002
90° Bend 60x300	60x300		CSU36063002
90° Bend 60x400	60x400		CSU36064002
90° Bend 60x500	60x500		CSU36065002
90° Bend 60x600	60x600		CSU36066002
90° Bend 85x100	85x100		CSU38061002
90° Bend 85x150	85x150		CSU38061502
90° Bend 85x200	85x200		CSU38062002
90° Bend 85x300	85x300		CSU38063002
90° Bend 85x400	85x400		CSU38064002
90° Bend 85x500	85x500		CSU38065002
90° Bend 85x600	85x600		CSU38066002



CSU36062002.jpg

Type	Dimensions A/B (mm)	Weight kg/pcs	Ref. No.
90° Bend cover			
Optional 90° bend cover for enhanced cable protection. Snap-on fixation to the form piece by using universal cover clips (CSU08855000). Material: sheet steel, Pre-galvanized.			
90° Bend cover 70	70		CSU30060702
90° Bend cover 100	100		CSU30061002
90° Bend cover 150	150		CSU30061502
90° Bend cover 200	200		CSU30062002
90° Bend cover 300	300		CSU30063002
90° Bend cover 400	400		CSU30064002
90° Bend cover 500	500		CSU30065002
90° Bend cover 600	600		CSU30066002



CSU30062002.jpg

Form pieces

Type	Dimensions A/B (mm)		Weight kg/pcs	Ref. No.
------	---------------------	---	---------------	----------

Adjustable corner piece

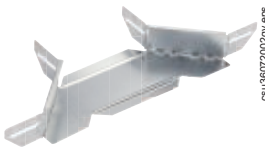
Can be used to construct variable horizontal bends in the cable tray system. Use screwless fixing clip for flat form pieces (CSU08856050) or M6x10 bolts & nuts to fix to the cable tray.
Material: sheet steel, Pre-galvanized.



Adjustable corner piece 35x100	35x100			CSU33521002
Adjustable corner piece 35x150	35x150			CSU33521502
Adjustable corner piece 35x200	35x200			CSU33522002
Adjustable corner piece 35x300	35x300			CSU33523002
Adjustable corner piece 35x400	35x400			CSU33524002
Adjustable corner piece 60x70	60x70			CSU36520702
Adjustable corner piece 60x100	60x100			CSU36521002
Adjustable corner piece 60x150	60x150			CSU36521502
Adjustable corner piece 60x200	60x200			CSU36522002
Adjustable corner piece 60x300	60x300			CSU36523002
Adjustable corner piece 60x400	60x400			CSU36524002
Adjustable corner piece 60x500	60x500			CSU36525002
Adjustable corner piece 60x600	60x600			CSU36526002
Adjustable corner piece 85x100	85x100			CSU38521002
Adjustable corner piece 85x150	85x150			CSU38521502
Adjustable corner piece 85x200	85x200			CSU38522002
Adjustable corner piece 85x300	85x300			CSU38523002
Adjustable corner piece 85x400	85x400			CSU38524002
Adjustable corner piece 85x500	85x500			CSU38525002
Adjustable corner piece 85x600	85x600			CSU38526002

Braching piece

Can be used to construct perpendicular branches at any desired position in the cable tray. Use screwless fixing clip for flat form pieces (CSU08856050) or M6x10 bolts & nuts to fix to the cable tray.
Material: sheet steel, Pre-galvanized.



Braching piece 35x100	35x100			CSU33071002
Braching piece 35x150	35x150			CSU33071502
Braching piece 35x200	35x200			CSU33072002
Braching piece 35x300	35x300			CSU33073002
Braching piece 35x400	35x400			CSU33074002
Braching piece 60x70	60x70			CSU36070702
Braching piece 60x100	60x100			CSU36071002
Braching piece 60x150	60x150			CSU36071502
Braching piece 60x200	60x200			CSU36072002
Braching piece 60x300	60x300			CSU36073002
Braching piece 60x400	60x400			CSU36074002
Braching piece 60x500	60x500			CSU36075002
Braching piece 60x600	60x600			CSU36076002
Braching piece 85x100	85x100			CSU38071002
Braching piece 85x150	85x150			CSU38071502
Braching piece 85x200	85x200			CSU38072002
Braching piece 85x300	85x300			CSU38073002
Braching piece 85x400	85x400			CSU38074002
Braching piece 85x500	85x500			CSU38075002
Braching piece 85x600	85x600			CSU38076002

Form pieces

Type	Dimensions A/B (mm)		Weight kg/pcs	Ref. No.
------	---------------------	---	---------------	----------

Braching piece cover

Optional branching piece cover for enhanced cable protection. Snap-on fixation to the form piece by using universal cover clips (CSU08855000).
Material: sheet steel, Pre-galvanized.



csu30072002.jpg

Braching piece cover 70	70			CSU30070702
Braching piece cover 100	100			CSU30071002
Braching piece cover 150	150			CSU30071502
Braching piece cover 200	200			CSU30072002
Braching piece cover 300	300			CSU30073002
Braching piece cover 400	400			CSU30074002
Braching piece cover 500	500			CSU30075002
Braching piece cover 600	600			CSU30076002

T-piece

Can be used to construct horizontal T-intersections at any desired position in the cable tray. Use screwless fixing clip for flat form pieces (CSU08856050) or M6x10 bolts & nuts to fix to the cable tray.
Material: sheet steel, Pre-galvanized.



csu36152002y.jpg

T-piece 35x100	35x100			CSU33151002
T-piece 35x150	35x150			CSU33151502
T-piece 35x200	35x200			CSU33152002
T-piece 35x300	35x300			CSU33153002
T-piece 35x400	35x400			CSU33154002
T-piece 60x70	60x70			CSU36150702
T-piece 60x100	60x100			CSU36151002
T-piece 60x150	60x150			CSU36151502
T-piece 60x200	60x200			CSU36152002
T-piece 60x300	60x300			CSU36153002
T-piece 60x400	60x400			CSU36154002
T-piece 60x500	60x500			CSU36155002
T-piece 60x600	60x600			CSU36156002
T-piece 85x100	85x100			CSU38151002
T-piece 85x150	85x150			CSU38151502
T-piece 85x200	85x200			CSU38152002
T-piece 85x300	85x300			CSU38153002
T-piece 85x400	85x400			CSU38154002
T-piece 85x500	85x500			CSU38155002
T-piece 85x600	85x600			CSU38156002

T-piece cover

Optional T-piece cover for enhanced cable protection. Snap-on fixation to the form piece by using universal cover clips (CSU08855000).
Material: sheet steel, Pre-galvanized.



csu30152002.jpg

T-piece cover 70	70			CSU30150702
T-piece cover 100	100			CSU30151002
T-piece cover 150	150			CSU30151502
T-piece cover 200	200			CSU30152002
T-piece cover 300	300			CSU30153002
T-piece cover 400	400			CSU30154002
T-piece cover 500	500			CSU30155002
T-piece cover 600	600			CSU30156002

Form pieces

Type	Dimensions A/B (mm)		Weight kg/pcs	Ref. No.
------	---------------------	---	---------------	----------

X-piece

Can be used to construct horizontal cross intersections at any desired position in the cable tray. Use screwless fixing clip for flat form pieces (CSU08856050) or M6x10 bolts & nuts to fix to the cable tray. Material: sheet steel, Pre-galvanized.



csu0616202gv.jpg

X-piece 35x100	35x100			CSU33161002
X-piece 35x150	35x150			CSU33161502
X-piece 35x200	35x200			CSU33162002
X-piece 35x300	35x300			CSU33163002
X-piece 35x400	35x400			CSU33164002
X-piece 60x70	60x70			CSU36160702
X-piece 60x100	60x100			CSU36161002
X-piece 60x150	60x150			CSU36161502
X-piece 60x200	60x200			CSU36162002
X-piece 60x300	60x300			CSU36163002
X-piece 60x400	60x400			CSU36164002
X-piece 60x500	60x500			CSU36165002
X-piece 60x600	60x600			CSU36166002
X-piece 85x100	85x100			CSU38161002
X-piece 85x150	85x150			CSU38161502
X-piece 85x200	85x200			CSU38162002
X-piece 85x300	85x300			CSU38163002
X-piece 85x400	85x400			CSU38164002
X-piece 85x500	85x500			CSU38165002
X-piece 85x600	85x600			CSU38166002

X-piece cover

Optional X-piece cover for enhanced cable protection. Snap-on fixation to the form piece by using universal cover clips (CSU08855000). Material: sheet steel, Pre-galvanized.

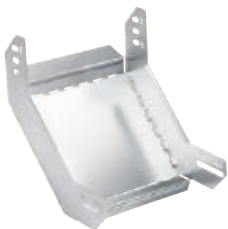


csu30162002.jpg

X-piece cover 70	70			CSU30160702
X-piece cover 100	100			CSU30161002
X-piece cover 150	150			CSU30161502
X-piece cover 200	200			CSU30162002
X-piece cover 300	300			CSU30163002
X-piece cover 400	400			CSU30164002
X-piece cover 500	500			CSU30165002
X-piece cover 600	600			CSU30166002

Internal riser

Can be used to construct vertical 90° upwards direction changes at any desired position in the cable tray. Use screwless fixing clip for flat form pieces (CSU08856050) or M6x10 bolts & nuts to fix to the cable tray. Material: sheet steel, Pre-galvanized.



csu36232002gv.jpg

Internal riser 35x100	35x100			CSU33231002
Internal riser 35x150	35x150			CSU33231502
Internal riser 35x200	35x200			CSU33232002
Internal riser 35x300	35x300			CSU33233002
Internal riser 35x400	35x400			CSU33234002
Internal riser 60x70	60x70			CSU36230702
Internal riser 60x100	60x100			CSU36231002
Internal riser 60x150	60x150			CSU36231502
Internal riser 60x200	60x200			CSU36232002
Internal riser 60x300	60x300			CSU36233002
Internal riser 60x400	60x400			CSU36234002
Internal riser 60x500	60x500			CSU36235002
Internal riser 60x600	60x600			CSU36236002
Internal riser 85x100	85x100			CSU38231002
Internal riser 85x150	85x150			CSU38231502
Internal riser 85x200	85x200			CSU38232002
Internal riser 85x300	85x300			CSU38233002
Internal riser 85x400	85x400			CSU38234002
Internal riser 85x500	85x500			CSU38235002
Internal riser 85x600	85x600			CSU38236002

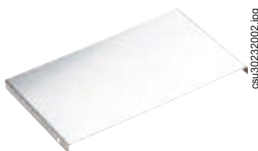
Form pieces

Type	Dimensions A/B (mm)		Weight kg/pcs	Ref. No.
------	---------------------	---	---------------	----------

Internal riser cover

Optional Internal riser cover for enhanced cable protection. Snap-on fixation to the form piece by using universal cover clips (CSU08855000).

Material: sheet steel, Pre-galvanized.



csu30232002.jpg

Internal riser cover 70	70			CSU30230702
Internal riser cover 100	100			CSU30231002
Internal riser cover 150	150			CSU30231502
Internal riser cover 200	200			CSU30232002
Internal riser cover 300	300			CSU30233002
Internal riser cover 400	400			CSU30234002
Internal riser cover 500	500			CSU30235002
Internal riser cover 600	600			CSU30236002

External riser

Can be used to construct vertical 90° downwards direction changes at any desired position in the cable tray. Use screwless fixing clip for flat form pieces (CSU08856050) or M6x10 bolts & nuts to fix to the cable tray.

Material: sheet steel, Pre-galvanized.



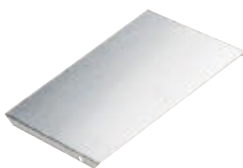
csu36222002gy.jpg

External riser 35x100	35x100			CSU33221002
External riser 35x150	35x150			CSU33221502
External riser 35x200	35x200			CSU33222002
External riser 35x300	35x300			CSU33223002
External riser 35x400	35x400			CSU33224002
External riser 60x70	60x70			CSU36220702
External riser 60x100	60x100			CSU36221002
External riser 60x150	60x150			CSU36221502
External riser 60x200	60x200			CSU36222002
External riser 60x300	60x300			CSU36223002
External riser 60x400	60x400			CSU36224002
External riser 60x500	60x500			CSU36225002
External riser 60x600	60x600			CSU36226002
External riser 85x100	85x100			CSU38221002
External riser 85x150	85x150			CSU38221502
External riser 85x200	85x200			CSU38222002
External riser 85x300	85x300			CSU38223002
External riser 85x400	85x400			CSU38224002
External riser 85x500	85x500			CSU38225002
External riser 85x600	85x600			CSU38226002

External riser cover

Optional External riser cover for enhanced cable protection. Snap-on fixation to the form piece by using universal cover clips (CSU08855000).

Material: sheet steel, Pre-galvanized.



csu30222002.jpg

External riser cover 70	70			CSU30220702
External riser cover 100	100			CSU30221002
External riser cover 150	150			CSU30221502
External riser cover 200	200			CSU30222002
External riser cover 300	300			CSU30223002
External riser cover 400	400			CSU30224002
External riser cover 500	500			CSU30225002
External riser cover 600	600			CSU30226002

Universal angle connector

Can be used to cover gaps between cable trays placed perpendicularly in a flexible and aesthetic way. Use M6x10 bolts & nuts to fix to the cable tray.

Material: sheet steel, Pre-galvanized.



csu36110002.2.jpg

Universal angle connector 35	35			CSU33110002
Universal angle connector 60	60			CSU36110002
Universal angle connector 85	85			CSU38110002

Universal angle connector cover

Optional universal angle connector cover for enhanced cable protection. Snap-on fixation to the form piece by using universal cover clips (CSU08855000).

Material: sheet steel, Pre-galvanized.



csu08890000.jpg

Universal angle connector cover	-			CSU08890000
---------------------------------	---	--	--	-------------

Form pieces

Type	Dimensions A/B (mm)		Weight kg/pcs	Ref. No.
------	---------------------	---	---------------	----------

End plate / Reducer piece

Can be used as an end cover or as a reducer, also applicable to construct horizontal bends. Fix to the cable tray with M6x10 bolts & nuts.
Material: sheet steel, Pre-galvanized.

End plate / Reducer piece 35x100	35x100			CSU73041000
End plate / Reducer piece 35x150	35x150			CSU73041500
End plate / Reducer piece 35x200	35x200			CSU73042000
End plate / Reducer piece 35x300	35x300			CSU73043000
End plate / Reducer piece 35x400	35x400			CSU73044000
End plate / Reducer piece 60x70	60x70			CSU76040700
End plate / Reducer piece 60x100	60x100			CSU76041000
End plate / Reducer piece 60x150	60x150			CSU76041500
End plate / Reducer piece 60x200	60x200			CSU76042000
End plate / Reducer piece 60x300	60x300			CSU76043000
End plate / Reducer piece 60x400	60x400			CSU76044000
End plate / Reducer piece 60x500	60x500			CSU76045000
End plate / Reducer piece 60x600	60x600			CSU76046000
End plate / Reducer piece 85x100	85x100			CSU78041000
End plate / Reducer piece 85x150	85x150			CSU78041500
End plate / Reducer piece 85x200	85x200			CSU78042000
End plate / Reducer piece 85x300	85x300			CSU78043000
End plate / Reducer piece 85x400	85x400			CSU78044000
End plate / Reducer piece 85x500	85x500			CSU78045000
End plate / Reducer piece 85x600	85x600			CSU78046000



CSU76042000.eps

Universal reducing piece

Universal reducer to be used for transition joining from wide to a narrower cable tray. The shorter length reducer is suitable up to size 300 and use longer length when bigger width is needed.
Material: sheet steel, Pre-galvanized.

Universal reducing piece 35 L = 607	35			CSU08940350
Universal reducing piece 35 L = 957	35			CSU08960350
Universal reducing piece 60 L = 607	60			CSU08940000
Universal reducing piece 60 L = 957	60			CSU08960000
Universal reducing piece 85 L = 607	85			CSU08940850
Universal reducing piece 85 L = 957	85			CSU08960850



CSU08940000.jpg

Vertical T-piece

Can be used to construct vertical T-intersections at any desired position in the cable tray. Use M6x10 bolts & nuts to fix to the cable tray.
Material: sheet steel, Pre-galvanized.

Vertical T-piece 35x100	35x100			CSU33211002
Vertical T-piece 35x150	35x150			CSU33211502
Vertical T-piece 35x200	35x200			CSU33212002
Vertical T-piece 35x300	35x300			CSU33213002
Vertical T-piece 35x400	35x400			CSU33214002
Vertical T-piece 60x70	60x70			CSU36210702
Vertical T-piece 60x100	60x100			CSU36211002
Vertical T-piece 60x150	60x150			CSU36211502
Vertical T-piece 60x200	60x200			CSU36212002
Vertical T-piece 60x300	60x300			CSU36213002
Vertical T-piece 60x400	60x400			CSU36214002
Vertical T-piece 60x500	60x500			CSU36215002
Vertical T-piece 60x600	60x600			CSU36216002
Vertical T-piece 85x100	85x100			CSU38211002
Vertical T-piece 85x150	85x150			CSU38211502
Vertical T-piece 85x200	85x200			CSU38212002
Vertical T-piece 85x300	85x300			CSU38213002
Vertical T-piece 85x400	85x400			CSU38214002
Vertical T-piece 85x500	85x500			CSU38215002
Vertical T-piece 85x600	85x600			CSU38216002



CSU36212002.jpg

Form pieces



csu33242002pv.jpg

Type	Dimensions A/B (mm)		Weight kg/pcs	Ref. No.
------	---------------------	---	---------------	----------

Vertical wall piece

Can be used to construct vertical T-intersections in the cable tray leaning against a wall. Use M6x10 bolts & nuts to fix to the cable tray.

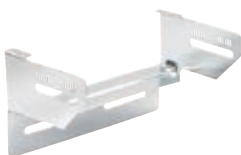
Material: sheet steel, Pre-galvanized.

Vertical wall piece 35x100	35x100			CSU33241002
Vertical wall piece 35x150	35x150			CSU33241502
Vertical wall piece 35x200	35x200			CSU33242002
Vertical wall piece 35x300	35x300			CSU33243002
Vertical wall piece 35x400	35x400			CSU33244002
Vertical wall piece 60x70	60x70			CSU36240702
Vertical wall piece 60x100	60x100			CSU36241002
Vertical wall piece 60x150	60x150			CSU36241502
Vertical wall piece 60x200	60x200			CSU36242002
Vertical wall piece 60x300	60x300			CSU36243002
Vertical wall piece 60x400	60x400			CSU36244002
Vertical wall piece 60x500	60x500			CSU36245002
Vertical wall piece 60x600	60x600			CSU36246002
Vertical wall piece 85x100	85x100			CSU38241002
Vertical wall piece 85x150	85x150			CSU38241502
Vertical wall piece 85x200	85x200			CSU38242002
Vertical wall piece 85x300	85x300			CSU38243002
Vertical wall piece 85x400	85x400			CSU38244002
Vertical wall piece 85x500	85x500			CSU38245002
Vertical wall piece 85x600	85x600			CSU38246002

Channel attachment

Use channel attachment to fix cable tray to the wall or mount on the lateral to guide in cables from a perpendicular cable tray.

Material: sheet steel, Pre-galvanized.



csu36512002pv.jpg

Channel attachment 35x100	35x100			CSU33511002
Channel attachment 35x150	35x150			CSU33511502
Channel attachment 35x200	35x200			CSU33512002
Channel attachment 35x300	35x300			CSU33513002
Channel attachment 35x400	35x400			CSU33514002
Channel attachment 60x70	60x70			CSU36510702
Channel attachment 60x100	60x100			CSU36511002
Channel attachment 60x150	60x150			CSU36511502
Channel attachment 60x200	60x200			CSU36512002
Channel attachment 60x300	60x300			CSU36513002
Channel attachment 60x400	60x400			CSU36514002
Channel attachment 60x500	60x500			CSU36515002
Channel attachment 60x600	60x600			CSU36516002
Channel attachment 85x100	85x100			CSU38511002
Channel attachment 85x150	85x150			CSU38511502
Channel attachment 85x200	85x200			CSU38512002
Channel attachment 85x300	85x300			CSU38513002
Channel attachment 85x400	85x400			CSU38514002
Channel attachment 85x500	85x500			CSU38515002
Channel attachment 85x600	85x600			CSU38516002

Form pieces



csu36182004b.jpg

Type	Dimensions A/B (mm)	Weight kg/pcs	Ref. No.
End cover			
End cover can be used to ensure an aesthetic finish to the ducting route. Use M6x10 bolts & nuts to fix to the cable tray. Material: sheet steel, Pre-galvanized.			
End cover 35x100	35x100		CSU33181004
End cover 35x150	35x150		CSU33181504
End cover 35x200	35x200		CSU33182004
End cover 35x300	35x300		CSU33183004
End cover 35x400	35x400		CSU33184004
End cover 60x70	60x70		CSU36180704
End cover 60x100	60x100		CSU36181004
End cover 60x150	60x150		CSU36181504
End cover 60x200	60x200		CSU36182004
End cover 60x300	60x300		CSU36183004
End cover 60x400	60x400		CSU36184004
End cover 60x500	60x500		CSU36185004
End cover 60x600	60x600		CSU36186004
End cover 85x100	85x100		CSU38181004
End cover 85x150	85x150		CSU38181504
End cover 85x200	85x200		CSU38182004
End cover 85x300	85x300		CSU38183004
End cover 85x400	85x400		CSU38184004
End cover 85x500	85x500		CSU38185004
End cover 85x600	85x600		CSU38186004

Mounting accessories



csu08010000.jpg

Side joint			
Internal coupler to joint two lengths of cable trays. Fixation with bolts M6x10 & nuts. Use 2 couplers per cable tray. Material: sheet steel, Pre-galvanized.			
Side joint 35	35		CSU73030000
Side joint 60	60		CSU08010000
Side joint 85	85		CSU78030000



csu08010109.jpg



csu08016000.jpg

Screwless side joint			
Screwless snap-in internal coupler for system height 60 to be used to joint two lengths of cable trays. Optional fixation with bolts M6x10 & nuts. Use 2 couplers per cable tray. Material: sheet steel, Pre-galvanized			
Unilock Screwless side joint 60	60		CSU08010109
Lock Screwless side joint 60	60		CSU08016000



csu70702000.jpg

Bottom joint			
Optional sleeve-on bottom coupler for enhanced system alignment and performance. Material: sheet steel, Pre-galvanized.			
Bottom joint 200	200		CSU70702000
Bottom joint 300	300		CSU70703000
Bottom joint 400	400		CSU70704000
Bottom joint 500	500		CSU70705000
Bottom joint 600	600		CSU70706000



Hinge coupler			
Can be used to construct any type of level change at any point of the cable tray installation. Use 2 couplers per cable tray. To be used in combination with bolts M6x10 & nuts. Material: sheet steel, Pre-galvanized.			
Hinge coupler 35	35		CSU73120009
Hinge coupler 60	60		CSU76120009
Hinge coupler 85	85		CSU78120009

Mounting accessories

Type	Dimensions A/B (mm)		Weight kg/pcs	Ref. No.
------	---------------------	---	---------------	----------

Bottom strip for separation wall

Mounting plate to be used when separation wall is mounted in cable tray with plain bottom. Press down vertically the mounting plate and thereafter mount Grendel fixing clip for separation wall.
Material: sheet steel, Pre-galvanized.



csu08873200.jpg

Bottom strip for separation wall 70	70			CSU08871200
Bottom strip for separation wall 100	100			CSU08871000
Bottom strip for separation wall 150	150			CSU08871500
Bottom strip for separation wall 200	200			CSU08873200
Bottom strip for separation wall 300	300			CSU08873000
Bottom strip for separation wall 400	400			CSU08876200
Bottom strip for separation wall 500	500			CSU08877200
Bottom strip for separation wall 600	600			CSU08878200

Grendel for separation wall fixation

Screwless snap-in fixation of separation walls on the cable tray length. Available for system height 60 only.
Material: sheet steel, Pre-galvanized.



csu08870500.jpg

Grendel 60	60			CSU08870500
------------	----	--	--	--------------------

Universal cover clamp

Universal cover clamp for snap-on fixation of the covers. Delivered in a bag of 100 pieces. Use 4 pieces on each meter.
Material: spring steel.



P146898.jpg

Universal cover clamp				CSU08855000
-----------------------	--	--	--	--------------------

Captive cover clamp

C-shape cover clamp designed for outdoor use and vertical installations.
Material: spring steel.



csu76240000.jpg

Captive cover clamp 35	35			CSU73240000
Captive cover clamp 60	60			CSU76240000
Captive cover clamp 85	85			CSU78240000

Fixing clip for flat form pieces

Use screwless fixing clip to fix form pieces on the cable trays. Available for system height 60 only.
Material: spring steel.



csu08856050.jpg

Fixing clip for flat form pieces 60	60			CSU08856050
-------------------------------------	----	--	--	--------------------

Mounting plate

To be used for the installation of junction boxes, light fittings, etc., in cable trays.
Material: sheet steel, Pre-galvanized



csu08090109.jpg

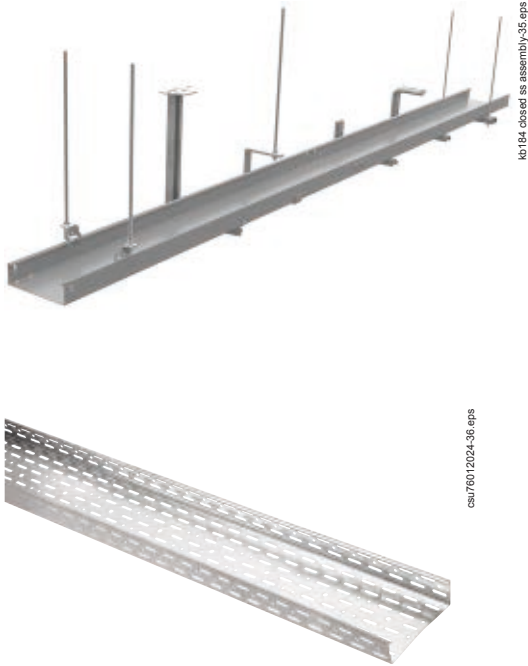
Mounting plate flat				CSU08090109
---------------------	--	--	--	--------------------

Mounting accessories

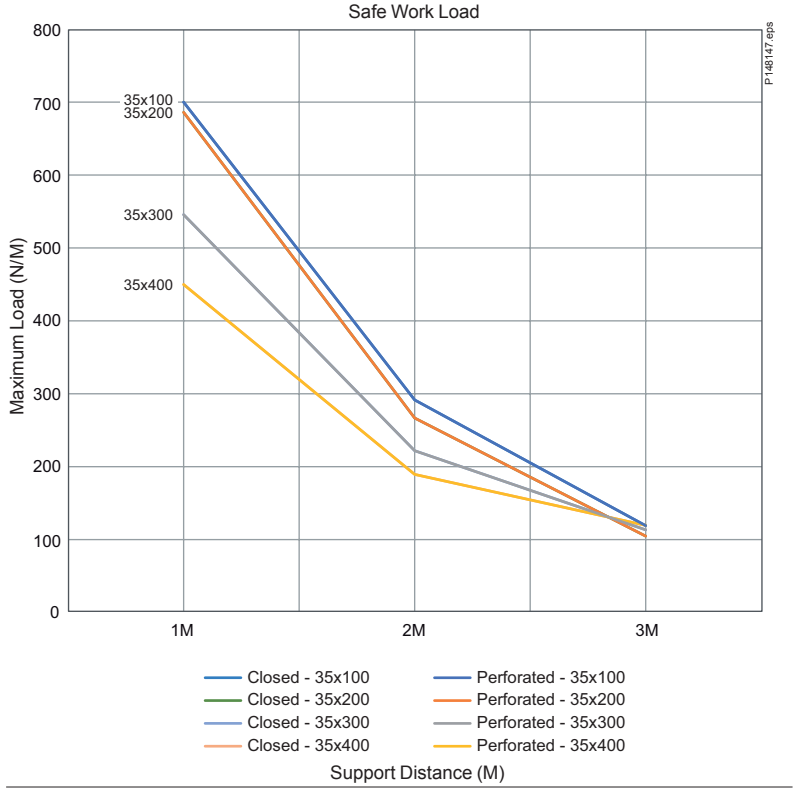
Type	Dimensions A/B (mm)		Weight kg/pcs	Ref. No.
Bolt & nut				
Bolts, nuts and washers are delivered in a bag of 100 pieces. Material: sheet steel, electro-galvanized.				
 csu08462000.jpg	Bolt M6x10	M6x10		CSU08462000
 csu08461000-2.jpg	Bolt M6x16	M6x16		CSU08463000
 csu08180000-2.jpg	Flange nut M6	M6		CSU08461000
 csu08180000-2.jpg	Nut M6	M6		CSU08180000
 csu08190000-2.jpg	Washer M6	M6		CSU08190000
Earthing clamp				
Earthing clamp for earthing of the installation to comply with safety requirements. Fix to the lateral of the cable tray. Suits cables from 16 to 70 mm ² . Material: brass, electrolytical nickel coating.				
 P112470.eps	Earthing clamp			4571310
Protection strip				
Protection strip. To be used to protect cutted edges in the cable tray. Delivered as roll of 5 m. Material: PVC, black.				
 P146894.eps	Protection strip 5 m	5 m		CSU08040000
Cutting sear				
Use manual or electric metal shears to ensure a fast, safe and clean cut of cable tray length material. Material: steel.				
 csu08770100.jpg	Cutting shear manual			CSU08770100
 P147022.eps	Cutting shear electric			CSU08770200
 P147023.eps	Electric shear replacement knife			CSU08780200
Strip fixing W44				
Modular cable retainer. Suited with double sided self-adhesive tape to be fixed inside the cable tray. Delivered in 10 cm pieces in a bag of 50. Material: PPE.				
 P146804.eps	Strip fixing W44			718469

KB184 cable trays

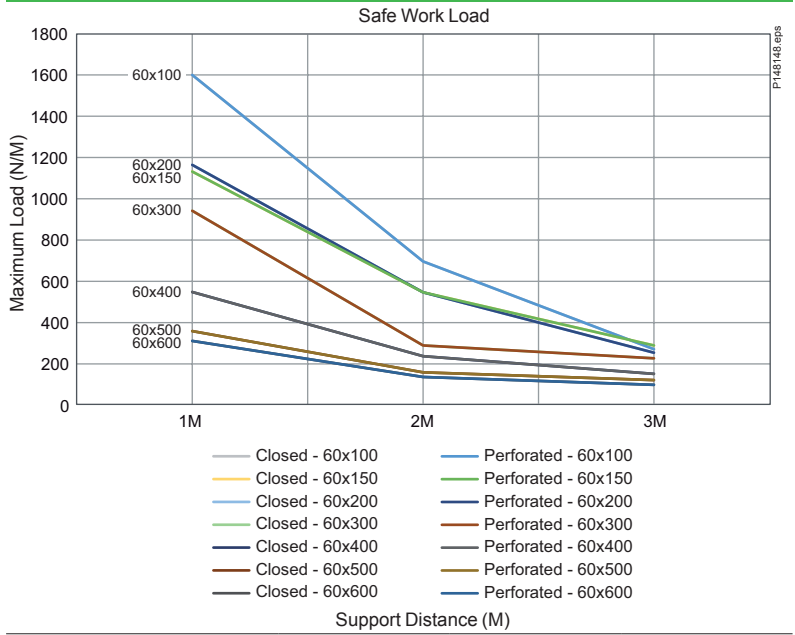
Safety working load diagrams



KB184 - H = 35



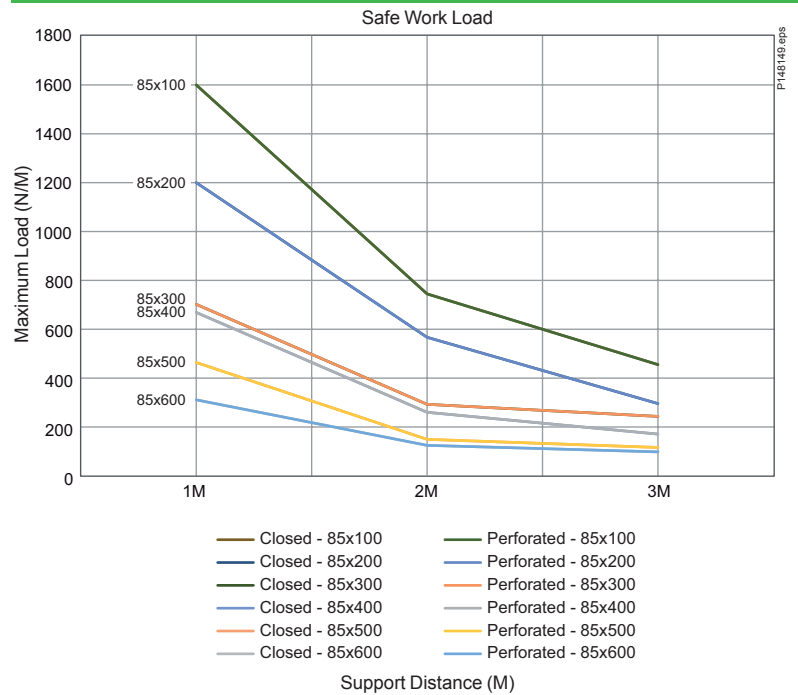
KB184 - H = 60



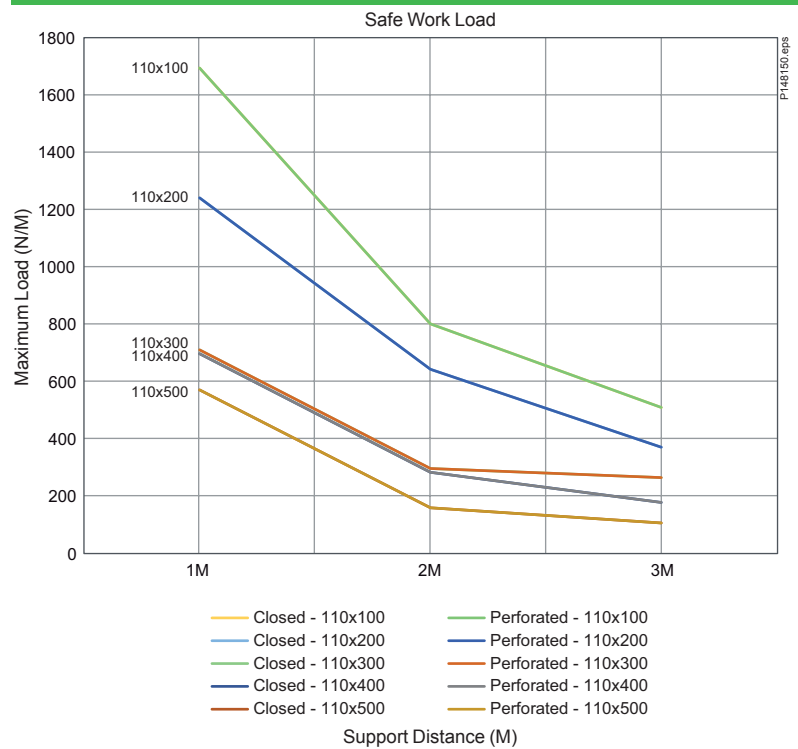
KB184 cable trays

Safety working load diagrams

KB184 - H = 85



KB184 - H = 110



Length material



csu76012024.jpg

Type	Dimensions A/B (mm)	 Length C (mm)	Weight kg/pcs	Ref. No.
Cable tray perforated L = 3000 mm				
Perforated steel cable tray for routing cables throughout the system. Designed with rounded safety edges to protect cables. Connect individual lengths by using screless Unilock joint or by screw type coupler with M6 bolts & nuts. Material: sheet steel, Pre-galvanized.				
Cable tray perforated 35x100	35x100	3000		CSU73011004
Cable tray perforated 35x150	35x150	3000		CSU73011504
Cable tray perforated 35x200	35x200	3000		CSU73012004
Cable tray perforated 35x300	35x300	3000		CSU73013004
Cable tray perforated 35x400	35x400	3000		CSU73014004
Cable tray perforated 60x70	60x70	3000		CSU76010702
Cable tray perforated 60x100	60x100	3000		CSU76011004
Cable tray perforated 60x150	60x150	3000		CSU76011504
Cable tray perforated 60x200	60x200	3000		CSU76012004
Cable tray perforated 60x300	60x300	3000		CSU76013004
Cable tray perforated 60x400	60x400	3000		CSU76014004
Cable tray perforated 60x500	60x500	3000		CSU76015004
Cable tray perforated 60x600	60x600	3000		CSU76016004
Cable tray perforated 85x100	85x100	3000		CSU78011004
Cable tray perforated 85x150	85x150	3000		CSU78011504
Cable tray perforated 85x200	85x200	3000		CSU78012004
Cable tray perforated 85x300	85x300	3000		CSU78013004
Cable tray perforated 85x400	85x400	3000		CSU78014004
Cable tray perforated 85x500	85x500	3000		CSU78015004
Cable tray perforated 85x600	85x600	3000		CSU78016004
Cable tray perforated 110x100	110x100	3000		CSU71011004
Cable tray perforated 110x150	110x150	3000		CSU71011504
Cable tray perforated 110x200	110x200	3000		CSU71012004
Cable tray perforated 110x300	110x300	3000		CSU71013004
Cable tray perforated 110x400	110x400	3000		CSU71014004
Cable tray perforated 110x500	110x500	3000		CSU71015004



csu08603404.jpg

Type	Dimensions A/B (mm)	Length C (mm)	Weight kg/pcs	Ref. No.
Cable tray closed L = 3000 mm				
Non-perforated steel cable tray for routing cables throughout the system. Designed with rounded safety edges to protect cables. Connect individual lengths by using screless Unilock joint or by screw type coupler with M6 bolts & nuts. Material: sheet steel, Pre-galvanized.				
Cable tray closed 35x100	35x100	3000		CSU73001004
Cable tray closed 35x150	35x150	3000		CSU73001504
Cable tray closed 35x200	35x200	3000		CSU73002004
Cable tray closed 35x300	35x300	3000		CSU73003004
Cable tray closed 35x400	35x400	3000		CSU73004004
Cable tray closed 60x70	60x70	3000		CSU76000702
Cable tray closed 60x100	60x100	3000		CSU76001004
Cable tray closed 60x150	60x150	3000		CSU76001504
Cable tray closed 60x200	60x200	3000		CSU76002004
Cable tray closed 60x300	60x300	3000		CSU76003004
Cable tray closed 60x400	60x400	3000		CSU76004004
Cable tray closed 60x500	60x500	3000		CSU76005004
Cable tray closed 60x600	60x600	3000		CSU76006004
Cable tray closed 85x100	85x100	3000		CSU78001004
Cable tray closed 85x150	85x150	3000		CSU78001504
Cable tray closed 85x200	85x200	3000		CSU78002004
Cable tray closed 85x300	85x300	3000		CSU78003004
Cable tray closed 85x400	85x400	3000		CSU78004004
Cable tray closed 85x500	85x500	3000		CSU78005004
Cable tray closed 85x600	85x600	3000		CSU78006004
Cable tray closed 110x100	110x100	3000		CSU71001004
Cable tray closed 110x150	110x150	3000		CSU71001504
Cable tray closed 110x200	110x200	3000		CSU71002004
Cable tray closed 110x300	110x300	3000		CSU71003004
Cable tray closed 110x400	110x400	3000		CSU71004004
Cable tray closed 110x500	110x500	3000		CSU71005004

Length material

Type	Dimensions A/B (mm)	Length C (mm)	Weight kg/pcs	Ref. No.
------	---------------------	---------------	---------------	----------

Cover L = 2000 mm

Optional cover can be mounted for enhanced cable protection against dust, fluids, UV etc. Delivered in 2 m length. Snap-on fixation to cable trays by using universal cover clamp (CSU08855000). Material: sheet steel, Pre-galvanized.

Cover 70	70	2000		CSU08161003
Cover 100	100	2000		CSU08161103
Cover 150	150	2000		CSU08161503
Cover 200	200	2000		CSU08163003
Cover 300	300	2000		CSU08164303
Cover 400	400	2000		CSU08166004
Cover 500	500	2000		CSU08167004
Cover 600	600	2000		CSU08168004



csu08164303.jpg

Separation wall L = 3000 mm

Use separation wall to create divided compartments in the cable tray length material. Fix to cable tray by using screwless grendel clamp (height 60 only) or by using M6x10 bolts & nuts. Material: sheet steel, Pre-galvanized.

Separation wall 35	35	3000		CSU73020000
Separation wall 60	60	3000		CSU76020000
Separation wall 85	85	3000		CSU78020000
Separation wall 110	110	3000		CSU71020000



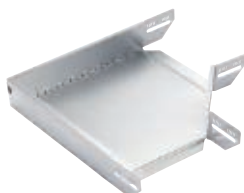
P148803.jpg

Form pieces

90° Bend

Can be used to construct horizontal 90° direction changes at any desired position in the cable tray. Use screwless fixing clip for flat form pieces (CSU08856050) or M6x10 bolts & nuts to fix to the cable tray. Material: sheet steel, Pre-galvanized.

90° Bend 35x100	35x100			CSU33061002
90° Bend 35x150	35x150			CSU33061502
90° Bend 35x200	35x200			CSU33062002
90° Bend 35x300	35x300			CSU33063002
90° Bend 35x400	35x400			CSU33064002
90° Bend 60x70	60x70			CSU36060702
90° Bend 60x100	60x100			CSU36061002
90° Bend 60x150	60x150			CSU36061502
90° Bend 60x200	60x200			CSU36062002
90° Bend 60x300	60x300			CSU36063002
90° Bend 60x400	60x400			CSU36064002
90° Bend 60x500	60x500			CSU36065002
90° Bend 60x600	60x600			CSU36066002
90° Bend 85x100	85x100			CSU38061002
90° Bend 85x150	85x150			CSU38061502
90° Bend 85x200	85x200			CSU38062002
90° Bend 85x300	85x300			CSU38063002
90° Bend 85x400	85x400			CSU38064002
90° Bend 85x500	85x500			CSU38065002
90° Bend 85x600	85x600			CSU38066002
90° Bend 110x100	110x100			CSU31061002
90° Bend 110x150	110x150			CSU31061502
90° Bend 110x200	110x200			CSU31062002
90° Bend 110x300	110x300			CSU31063002
90° Bend 110x400	110x400			CSU31064002
90° Bend 110x500	110x500			CSU31065002



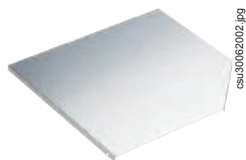
csu36062002.jpg

Form pieces

Type	Dimensions A/B (mm)		Weight kg/pcs	Ref. No.
------	------------------------	---	------------------	----------

90° Bend cover

Optional 90° bend cover for enhanced cable protection. Snap-on fixation to the form piece by using universal cover clips (CSU08855000).
Material: sheet steel, Pre-galvanized.



csu30062002.jpg

90° Bend cover 70	70			CSU30060702
90° Bend cover 100	100			CSU30061002
90° Bend cover 150	150			CSU30061502
90° Bend cover 200	200			CSU30062002
90° Bend cover 300	300			CSU30063002
90° Bend cover 400	400			CSU30064002
90° Bend cover 500	500			CSU30065002
90° Bend cover 600	600			CSU30066002

Adjustable corner piece

Can be used to construct variable horizontal bends in the cable tray system. Use screwless fixing clip for flat form pieces (CSU08856050) or M6x10 bolts & nuts to fix to the cable tray.
Material: sheet steel, Pre-galvanized.



csu36522002.jpg

Adjustable corner piece 35x100	35x100			CSU33521002
Adjustable corner piece 35x150	35x150			CSU33521502
Adjustable corner piece 35x200	35x200			CSU33522002
Adjustable corner piece 35x300	35x300			CSU33523002
Adjustable corner piece 35x400	35x400			CSU33524002
Adjustable corner piece 60x70	60x70			CSU36520702
Adjustable corner piece 60x100	60x100			CSU36521002
Adjustable corner piece 60x150	60x150			CSU36521502
Adjustable corner piece 60x200	60x200			CSU36522002
Adjustable corner piece 60x300	60x300			CSU36523002
Adjustable corner piece 60x400	60x400			CSU36524002
Adjustable corner piece 60x500	60x500			CSU36525002
Adjustable corner piece 60x600	60x600			CSU36526002
Adjustable corner piece 85x100	85x100			CSU38521002
Adjustable corner piece 85x150	85x150			CSU38521502
Adjustable corner piece 85x200	85x200			CSU38522002
Adjustable corner piece 85x300	85x300			CSU38523002
Adjustable corner piece 85x400	85x400			CSU38524002
Adjustable corner piece 85x500	85x500			CSU38525002
Adjustable corner piece 85x600	85x600			CSU38526002
Adjustable corner piece 110x100	110x100			CSU31521002
Adjustable corner piece 110x150	110x150			CSU31521502
Adjustable corner piece 110x200	110x200			CSU31522002
Adjustable corner piece 110x300	110x300			CSU31523002
Adjustable corner piece 110x400	110x400			CSU31524002
Adjustable corner piece 110x500	110x500			CSU31525002

Form pieces

Type	Dimensions A/B (mm)		Weight kg/pcs	Ref. No.
------	---------------------	---	---------------	----------

Braching piece

Can be used to construct perpendicular branches at any desired position in the cable tray. Use screwless fixing clip for flat form pieces (CSU08856050) or M6x10 bolts & nuts to fix to the cable tray. Material: sheet steel, Pre-galvanized.



csu36072002y.eps

Braching piece 35x100	35x100			CSU33071002
Braching piece 35x150	35x150			CSU33071502
Braching piece 35x200	35x200			CSU33072002
Braching piece 35x300	35x300			CSU33073002
Braching piece 35x400	35x400			CSU33074002
Braching piece 60x70	60x70			CSU36070702
Braching piece 60x100	60x100			CSU36071002
Braching piece 60x150	60x150			CSU36071502
Braching piece 60x200	60x200			CSU36072002
Braching piece 60x300	60x300			CSU36073002
Braching piece 60x400	60x400			CSU36074002
Braching piece 60x500	60x500			CSU36075002
Braching piece 60x600	60x600			CSU36076002
Braching piece 85x100	85x100			CSU38071002
Braching piece 85x150	85x150			CSU38071502
Braching piece 85x200	85x200			CSU38072002
Braching piece 85x300	85x300			CSU38073002
Braching piece 85x400	85x400			CSU38074002
Braching piece 85x500	85x500			CSU38075002
Braching piece 85x600	85x600			CSU38076002
Braching piece 110x100	110x100			CSU31071002
Braching piece 110x150	110x150			CSU31071502
Braching piece 110x200	110x200			CSU31072002
Braching piece 110x300	110x300			CSU31073002
Braching piece 110x400	110x400			CSU31074002
Braching piece 110x500	110x500			CSU31075002

Braching piece cover

Optional branching piece cover for enhanced cable protection. Snap-on fixation to the form piece by using universal cover clips (CSU08855000).

Material: sheet steel, Pre-galvanized.



csu30072002.jpg

Braching piece cover 70	70			CSU30070702
Braching piece cover 100	100			CSU30071002
Braching piece cover 150	150			CSU30071502
Braching piece cover 200	200			CSU30072002
Braching piece cover 300	300			CSU30073002
Braching piece cover 400	400			CSU30074002
Braching piece cover 500	500			CSU30075002
Braching piece cover 600	600			CSU30076002

Form pieces

Type	Dimensions A/B (mm)	Weight kg/pcs	Ref. No.
------	---------------------	---------------	----------



T-piece

Can be used to construct horizontal T-intersections at any desired position in the cable tray. Use screwless fixing clip for flat form pieces (CSU08856050) or M6x10 bolts & nuts to fix to the cable tray. Material: sheet steel, Pre-galvanized.



csu36152002pv.jpg

T-piece 35x100	35x100		CSU33151002
T-piece 35x150	35x150		CSU33151502
T-piece 35x200	35x200		CSU33152002
T-piece 35x300	35x300		CSU33153002
T-piece 35x400	35x400		CSU33154002
T-piece 60x70	60x70		CSU36150702
T-piece 60x100	60x100		CSU36151002
T-piece 60x150	60x150		CSU36151502
T-piece 60x200	60x200		CSU36152002
T-piece 60x300	60x300		CSU36153002
T-piece 60x400	60x400		CSU36154002
T-piece 60x500	60x500		CSU36155002
T-piece 60x600	60x600		CSU36156002
T-piece 85x100	85x100		CSU38151002
T-piece 85x150	85x150		CSU38151502
T-piece 85x200	85x200		CSU38152002
T-piece 85x300	85x300		CSU38153002
T-piece 85x400	85x400		CSU38154002
T-piece 85x500	85x500		CSU38155002
T-piece 85x600	85x600		CSU38156002
T-piece 110x100	110x100		CSU31151002
T-piece 110x150	110x150		CSU31151502
T-piece 110x200	110x200		CSU31152002
T-piece 110x300	110x300		CSU31153002
T-piece 110x400	110x400		CSU31154002
T-piece 110x500	110x500		CSU31155002

T-piece cover

Optional T-piece cover for enhanced cable protection. Snap-on fixation to the form piece by using universal cover clips (CSU08855000). Material: sheet steel, Pre-galvanized.



csu30152002.jpg

T-piece cover 70	70		CSU30150702
T-piece cover 100	100		CSU30151002
T-piece cover 150	150		CSU30151502
T-piece cover 200	200		CSU30152002
T-piece cover 300	300		CSU30153002
T-piece cover 400	400		CSU30154002
T-piece cover 500	500		CSU30155002
T-piece cover 600	600		CSU30156002

Form pieces

Type	Dimensions A/B (mm)		Weight kg/pcs	Ref. No.
------	---------------------	---	---------------	----------

X-piece

Can be used to construct horizontal cross intersections at any desired position in the cable tray. Use screwless fixing clip for flat form pieces (CSU08856050) or M6x10 bolts & nuts to fix to the cable tray.
Material: sheet steel, Pre-galvanized.



csu3616202gv.jpg

X-piece 35x100	35x100			CSU33161002
X-piece 35x150	35x150			CSU33161502
X-piece 35x200	35x200			CSU33162002
X-piece 35x300	35x300			CSU33163002
X-piece 35x400	35x400			CSU33164002
X-piece 60x70	60x70			CSU36160702
X-piece 60x100	60x100			CSU36161002
X-piece 60x150	60x150			CSU36161502
X-piece 60x200	60x200			CSU36162002
X-piece 60x300	60x300			CSU36163002
X-piece 60x400	60x400			CSU36164002
X-piece 60x500	60x500			CSU36165002
X-piece 60x600	60x600			CSU36166002
X-piece 85x100	85x100			CSU38161002
X-piece 85x150	85x150			CSU38161502
X-piece 85x200	85x200			CSU38162002
X-piece 85x300	85x300			CSU38163002
X-piece 85x400	85x400			CSU38164002
X-piece 85x500	85x500			CSU38165002
X-piece 85x600	85x600			CSU38166002
X-piece 110x100	110x100			CSU31161002
X-piece 110x150	110x150			CSU31161502
X-piece 110x200	110x200			CSU31162002
X-piece 110x300	110x300			CSU31163002
X-piece 110x400	110x400			CSU31164002
X-piece 110x500	110x500			CSU31165002

X-piece cover

Optional X-piece cover for enhanced cable protection. Snap-on fixation to the form piece by using universal cover clips (CSU08855000).

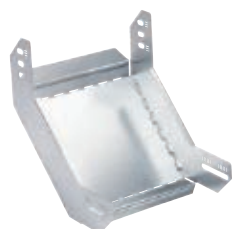
Material: sheet steel, Pre-galvanized.




csu30162002.jpg

X-piece cover 70	70			CSU30160702
X-piece cover 100	100			CSU30161002
X-piece cover 150	150			CSU30161502
X-piece cover 200	200			CSU30162002
X-piece cover 300	300			CSU30163002
X-piece cover 400	400			CSU30164002
X-piece cover 500	500			CSU30165002
X-piece cover 600	600			CSU30166002

Form pieces



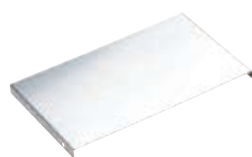
csu36232002.jpg

Type	Dimensions A/B (mm)		Weight kg/pcs	Ref. No.
Internal riser				
Can be used to construct vertical 90° upwards direction changes at any desired position in the cable tray. Use screwless fixing clip for flat form pieces (CSU08856050) or M6x10 bolts & nuts to fix to the cable tray. Material: sheet steel, Pre-galvanized.				
Internal riser 35x100	35x100			CSU33231002
Internal riser 35x150	35x150			CSU33231502
Internal riser 35x200	35x200			CSU33232002
Internal riser 35x300	35x300			CSU33233002
Internal riser 35x400	35x400			CSU33234002
Internal riser 60x70	60x70			CSU36230702
Internal riser 60x100	60x100			CSU36231002
Internal riser 60x150	60x150			CSU36231502
Internal riser 60x200	60x200			CSU36232002
Internal riser 60x300	60x300			CSU36233002
Internal riser 60x400	60x400			CSU36234002
Internal riser 60x500	60x500			CSU36235002
Internal riser 60x600	60x600			CSU36236002
Internal riser 85x100	85x100			CSU38231002
Internal riser 85x150	85x150			CSU38231502
Internal riser 85x200	85x200			CSU38232002
Internal riser 85x300	85x300			CSU38233002
Internal riser 85x400	85x400			CSU38234002
Internal riser 85x500	85x500			CSU38235002
Internal riser 85x600	85x600			CSU38236002
Internal riser 110x100	110x100			CSU31231002
Internal riser 110x150	110x150			CSU31231502
Internal riser 110x200	110x200			CSU31232002
Internal riser 110x300	110x300			CSU31233002
Internal riser 110x400	110x400			CSU31234002
Internal riser 110x500	110x500			CSU31235002

Internal riser cover

Optional internal riser cover for enhanced cable protection. Snap-on fixation to the form piece by using universal cover clips (CSU08855000).

Material: sheet steel, Pre-galvanized.



csu30232002.jpg

Internal riser cover 70	70			CSU30230702
Internal riser cover 100	100			CSU30231002
Internal riser cover 150	150			CSU30231502
Internal riser cover 200	200			CSU30232002
Internal riser cover 300	300			CSU30233002
Internal riser cover 400	400			CSU30234002
Internal riser cover 500	500			CSU30235002
Internal riser cover 600	600			CSU30236002

Form pieces



Type	Dimensions A/B (mm)	Weight kg/pcs	Ref. No.
External riser			
Can be used to construct vertical 90° downwards direction changes at any desired position in the cable tray. Use screwless fixing clip for flat form pieces (CSU08856050) or M6x10 bolts & nuts to fix to the cable tray. Material: sheet steel, Pre-galvanized.			
External riser 35x100	35x100		CSU33221002
External riser 35x150	35x150		CSU33221502
External riser 35x200	35x200		CSU33222002
External riser 35x300	35x300		CSU33223002
External riser 35x400	35x400		CSU33224002
External riser 60x70	60x70		CSU36220702
External riser 60x100	60x100		CSU36221002
External riser 60x150	60x150		CSU36221502
External riser 60x200	60x200		CSU36222002
External riser 60x300	60x300		CSU36223002
External riser 60x400	60x400		CSU36224002
External riser 60x500	60x500		CSU36225002
External riser 60x600	60x600		CSU36226002
External riser 85x100	85x100		CSU38221002
External riser 85x150	85x150		CSU38221502
External riser 85x200	85x200		CSU38222002
External riser 85x300	85x300		CSU38223002
External riser 85x400	85x400		CSU38224002
External riser 85x500	85x500		CSU38225002
External riser 85x600	85x600		CSU38226002
External riser 110x100	110x100		CSU31221002
External riser 110x150	110x150		CSU31221502
External riser 110x200	110x200		CSU31222002
External riser 110x300	110x300		CSU31223002
External riser 110x400	110x400		CSU31224002
External riser 110x500	110x500		CSU31225002



Type	Dimensions	Weight	Ref. No.
External riser cover			
Optional External riser cover for enhanced cable protection. Snap-on fixation to the form piece by using universal cover clips (CSU08855000). Material: sheet steel, Pre-galvanized.			
External riser cover 70	70		CSU30220702
External riser cover 100	100		CSU30221002
External riser cover 150	150		CSU30221502
External riser cover 200	200		CSU30222002
External riser cover 300	300		CSU30223002
External riser cover 400	400		CSU30224002
External riser cover 500	500		CSU30225002
External riser cover 600	600		CSU30226002



Type	Dimensions	Weight	Ref. No.
Universal angle connector			
Can be used to cover gaps between cable trays placed perpendicularly in a flexible and aesthetic way. Use M6x10 bolts & nuts to fix to the cable tray. Material: sheet steel, Pre-galvanized.			
Universal angle connector 35	35		CSU33110002
Universal angle connector 60	60		CSU36110002
Universal angle connector 85	85		CSU38110002
Universal angle connector 110	110		CSU31110002



Type	Ref. No.
Universal angle connector cover	
Optional universal angle connector cover for enhanced cable protection. Snap-on fixation to the form piece by using universal cover clips (CSU08855000). Material: sheet steel, Pre-galvanized.	
Universal angle connector cover	CSU08980000

Form pieces

Type	Dimensions A/B (mm)		Weight kg/pcs	Ref. No.
End plate / Reducer piece				
Can be used as an end cover or as a reducer, also applicable to construct horizontal bends. Fix to the cable tray with M6x10 bolts & nuts. Material: sheet steel, Pre-galvanized.				
End plate / Reducer piece 35x100	35x100			CSU73041000
End plate / Reducer piece 35x150	35x150			CSU73041500
End plate / Reducer piece 35x200	35x200			CSU73042000
End plate / Reducer piece 35x300	35x300			CSU73043000
End plate / Reducer piece 35x400	35x400			CSU73044000
End plate / Reducer piece 60x70	60x70			CSU76040700
End plate / Reducer piece 60x100	60x100			CSU76041000
End plate / Reducer piece 60x150	60x150			CSU76041500
End plate / Reducer piece 60x200	60x200			CSU76042000
End plate / Reducer piece 60x300	60x300			CSU76043000
End plate / Reducer piece 60x400	60x400			CSU76044000
End plate / Reducer piece 60x500	60x500			CSU76045000
End plate / Reducer piece 60x600	60x600			CSU76046000
End plate / Reducer piece 85x100	85x100			CSU78041000
End plate / Reducer piece 85x150	85x150			CSU78041500
End plate / Reducer piece 85x200	85x200			CSU78042000
End plate / Reducer piece 85x300	85x300			CSU78043000
End plate / Reducer piece 85x400	85x400			CSU78044000
End plate / Reducer piece 85x500	85x500			CSU78045000
End plate / Reducer piece 85x600	85x600			CSU78046000
End plate / Reducer piece 110x100	110x100			CSU71041000
End plate / Reducer piece 110x150	110x150			CSU71041500
End plate / Reducer piece 110x200	110x200			CSU71042000
End plate / Reducer piece 110x300	110x300			CSU71043000
End plate / Reducer piece 110x400	110x400			CSU71044000
End plate / Reducer piece 110x500	110x500			CSU71045000

CSU76942000.eps

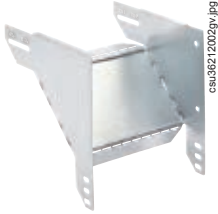


Universal reducing piece				
Universal reducer to be used for transition joining from wide to a narrower cable tray. The shorter length reducer is suitable up to size 300 and use longer length when bigger width is needed. Material: sheet steel, Pre-galvanized.				
Universal reducing piece 35 L = 607	35			CSU08940350
Universal reducing piece 35 L = 957	35			CSU08960350
Universal reducing piece 60 L = 607	60			CSU08940000
Universal reducing piece 60 L = 957	60			CSU08960000
Universal reducing piece 85 L = 607	85			CSU08940850
Universal reducing piece 85 L = 957	85			CSU08960850

CSU08940000.jpg



Form pieces

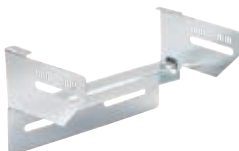


Type	Dimensions A/B (mm)	Weight kg/pcs	Ref. No.
Vertical T-piece			
Can be used to construct vertical T-intersections at any desired position in the cable tray. Use M6x10 bolts & nuts to fix to the cable tray. Material: sheet steel, Pre-galvanized.			
Vertical T-piece 35x100	35x100		CSU33211002
Vertical T-piece 35x150	35x150		CSU33211502
Vertical T-piece 35x200	35x200		CSU33212002
Vertical T-piece 35x300	35x300		CSU33213002
Vertical T-piece 35x400	35x400		CSU33214002
Vertical T-piece 60x70	60x70		CSU36210702
Vertical T-piece 60x100	60x100		CSU36211002
Vertical T-piece 60x150	60x150		CSU36211502
Vertical T-piece 60x200	60x200		CSU36212002
Vertical T-piece 60x300	60x300		CSU36213002
Vertical T-piece 60x400	60x400		CSU36214002
Vertical T-piece 60x500	60x500		CSU36215002
Vertical T-piece 60x600	60x600		CSU36216002
Vertical T-piece 85x100	85x100		CSU38211002
Vertical T-piece 85x150	85x150		CSU38211502
Vertical T-piece 85x200	85x200		CSU38212002
Vertical T-piece 85x300	85x300		CSU38213002
Vertical T-piece 85x400	85x400		CSU38214002
Vertical T-piece 85x500	85x500		CSU38215002
Vertical T-piece 85x600	85x600		CSU38216002
Vertical T-piece 110x100	110x100		CSU31211002
Vertical T-piece 110x150	110x150		CSU31211502
Vertical T-piece 110x200	110x200		CSU31212002
Vertical T-piece 110x300	110x300		CSU31213002
Vertical T-piece 110x400	110x400		CSU31214002
Vertical T-piece 110x500	110x500		CSU31215002



Type	Dimensions A/B (mm)	Weight kg/pcs	Ref. No.
Vertical wall piece			
Can be used to construct vertical T-intersections in the cable tray leaning against a wall. Use M6x10 bolts & nuts to fix to the cable tray. Material: sheet steel, Pre-galvanized.			
Vertical wall piece 35x100	35x100		CSU33241002
Vertical wall piece 35x150	35x150		CSU33241502
Vertical wall piece 35x200	35x200		CSU33242002
Vertical wall piece 35x300	35x300		CSU33243002
Vertical wall piece 35x400	35x400		CSU33244002
Vertical wall piece 60x70	60x70		CSU36240702
Vertical wall piece 60x100	60x100		CSU36241002
Vertical wall piece 60x150	60x150		CSU36241502
Vertical wall piece 60x200	60x200		CSU36242002
Vertical wall piece 60x300	60x300		CSU36243002
Vertical wall piece 60x400	60x400		CSU36244002
Vertical wall piece 60x500	60x500		CSU36245002
Vertical wall piece 60x600	60x600		CSU36246002
Vertical wall piece 85x100	85x100		CSU38241002
Vertical wall piece 85x150	85x150		CSU38241502
Vertical wall piece 85x200	85x200		CSU38242002
Vertical wall piece 85x300	85x300		CSU38243002
Vertical wall piece 85x400	85x400		CSU38244002
Vertical wall piece 85x500	85x500		CSU38245002
Vertical wall piece 85x600	85x600		CSU38246002
Vertical wall piece 110x100	110x100		CSU31241002
Vertical wall piece 110x150	110x150		CSU31241502
Vertical wall piece 110x200	110x200		CSU31242002
Vertical wall piece 110x300	110x300		CSU31243002
Vertical wall piece 110x400	110x400		CSU31244002
Vertical wall piece 110x500	110x500		CSU31245002

Form pieces



csu36512002bvi.jpg

Type	Dimensions A/B (mm)	Weight kg/pcs	Ref. No.
Channel attachment			
Use channel attachment to fix cable tray to the wall or mount on the lateral to guide in cables from a perpendicular cable tray. Material: sheet steel, Pre-galvanized.			
Channel attachment 35x100	35x100		CSU33511002
Channel attachment 35x150	35x150		CSU33511502
Channel attachment 35x200	35x200		CSU33512002
Channel attachment 35x300	35x300		CSU33513002
Channel attachment 35x400	35x400		CSU33514002
Channel attachment 60x70	60x70		CSU36510702
Channel attachment 60x100	60x100		CSU36511002
Channel attachment 60x150	60x150		CSU36511502
Channel attachment 60x200	60x200		CSU36512002
Channel attachment 60x300	60x300		CSU36513002
Channel attachment 60x400	60x400		CSU36514002
Channel attachment 60x500	60x500		CSU36515002
Channel attachment 60x600	60x600		CSU36516002
Channel attachment 85x100	85x100		CSU38511002
Channel attachment 85x150	85x150		CSU38511502
Channel attachment 85x200	85x200		CSU38512002
Channel attachment 85x300	85x300		CSU38513002
Channel attachment 85x400	85x400		CSU38514002
Channel attachment 85x500	85x500		CSU38515002
Channel attachment 85x600	85x600		CSU38516002
Channel attachment 110x100	110x100		CSU31511002
Channel attachment 110x150	110x150		CSU31511502
Channel attachment 110x200	110x200		CSU31512002
Channel attachment 110x300	110x300		CSU31513002
Channel attachment 110x400	110x400		CSU31514002
Channel attachment 110x500	110x500		CSU31515002



csu36182004gv.jpg

Type	Dimensions A/B (mm)	Weight kg/pcs	Ref. No.
End cover			
End cover can be used to ensure an aesthetic finish to the ducting route. Use M6x10 bolts & nuts to fix to the cable tray. Material: sheet steel, Pre-galvanized.			
End cover 35x100	35x100		CSU33181004
End cover 35x150	35x150		CSU33181504
End cover 35x200	35x200		CSU33182004
End cover 35x300	35x300		CSU33183004
End cover 35x400	35x400		CSU33184004
End cover 60x70	60x70		CSU36180704
End cover 60x100	60x100		CSU36181004
End cover 60x150	60x150		CSU36181504
End cover 60x200	60x200		CSU36182004
End cover 60x300	60x300		CSU36183004
End cover 60x400	60x400		CSU36184004
End cover 60x500	60x500		CSU36185004
End cover 60x600	60x600		CSU36186004
End cover 85x100	85x100		CSU38181004
End cover 85x150	85x150		CSU38181504
End cover 85x200	85x200		CSU38182004
End cover 85x300	85x300		CSU38183004
End cover 85x400	85x400		CSU38184004
End cover 85x500	85x500		CSU38185004
End cover 85x600	85x600		CSU38186004
End cover 110x100	110x100		CSU31181004
End cover 110x150	110x150		CSU31181504
End cover 110x200	110x200		CSU31182004
End cover 110x300	110x300		CSU31183004
End cover 110x400	110x400		CSU31184004
End cover 110x500	110x500		CSU31185004

Mounting accessories

Type	Dimensions A/B (mm)		Weight kg/pcs	Ref. No.
------	---------------------	---	---------------	----------

Side joint

Internal coupler to joint two lengths of cable trays. Fixation with bolts M6x10 & nuts. Use 2 couplers per cable tray. Material: sheet steel, Pre-galvanized.



Side joint 35	35			CSU73030000
Side joint 60	60			CSU08010000
Side joint 85	85			CSU78030000
Side joint 110	110			CSU71030100

Screwless side joint

Screwless snap-in internal coupler for system height 60 to be used to joint two lengths of cable trays. Optional fixation with bolts M6x10 & nuts. Use 2 couplers per cable tray. Material: sheet steel, Pre-galvanized.



Unilock Screwless side joint 60	60			CSU08010109
Lock Screwless side joint 60	60			CSU08016000

Bottom joint

Optional sleeve-on bottom coupler for enhanced system alignment and performance. Material: sheet steel, Pre-galvanized.



Bottom joint 200	200			CSU70702000
Bottom joint 300	300			CSU70703000
Bottom joint 400	400			CSU70704000
Bottom joint 500	500			CSU70705000
Bottom joint 600	600			CSU70706000

Hinge coupler

Can be used to construct any type of level change at any point of the cable tray installation. Use 2 couplers per cable tray. To be used in combination with bolts M6x10 & nuts. Material: sheet steel, Pre-galvanized.



Hinge coupler 35	35			CSU73120009
Hinge coupler 60	60			CSU76120009
Hinge coupler 85	85			CSU78120009
Hinge coupler 110	110			CSU71120000

Bottom strip for separation wall

Mounting plate to be used when separation wall is mounted in cable tray with plain bottom. Press down vertically the mounting plate and thereafter mount Grendel fixing clip for separation wall. Material: sheet steel, Pre-galvanized.



Bottom strip for separation wall 70	70			CSU08871200
Bottom strip for separation wall 100	100			CSU08871000
Bottom strip for separation wall 150	150			CSU08871500
Bottom strip for separation wall 200	200			CSU08873200
Bottom strip for separation wall 300	300			CSU08873000
Bottom strip for separation wall 400	400			CSU08876200
Bottom strip for separation wall 500	500			CSU08877200
Bottom strip for separation wall 600	600			CSU08878200

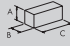
Grendel for separation wall fixation

Screwless snap-in fixation of separation walls on the cable tray length. Available for system height 60 only. Material: sheet steel, Pre-galvanized.



Grendel 60	60			CSU08870500
------------	----	--	--	--------------------

Mounting accessories

Type	Dimensions A/B (mm)		Weight kg/pcs	Ref. No.
Universal cover clamp				
Universal cover clamp for snap-on fixation of the covers. Delivered in a bag of 100 pieces. Use 4 pieces on each meter. Material: spring steel.				
Universal cover clamp				CSU08855000
Captive cover clamp				
C-shape cover clamp designed for outdoor use and vertical installations. Material: spring steel.				
Captive cover clamp 35	35			CSU73240000
Captive cover clamp 60	60			CSU76240000
Captive cover clamp 85	85			CSU78240000
Captive cover clamp 110	110			CSU71240000
Fixing clip for flat form pieces				
Use screwless fixing clip to fix form pieces on the cable trays. Available for system height 60 only. Material: spring steel.				
Fixing clip for flat form pieces 60	60			CSU08856050
Mounting plate				
To be used for the installation of junction boxes, light fittings, etc., in cable trays. Material: sheet steel, Pre-galvanized.				
Mounting plate flat horizontal				CSU08090109
Mounting plate flat vertical				CSU08250109
Mounting plate vertical				CSU08250209



3

Mounting accessories

Type	Dimensions A/B (mm)		Weight kg/pcs	Ref. No.
Bolt & nut				
Bolts, nuts and washers are delivered in a bag of 100 pieces. Material: sheet steel, electro-galvanized.				
 csu0846200.jpg	M6x10			CSU08462000
 csu08461000-2.jpg	M6x16			CSU08463000
 csu0818000-2.jpg	M6			CSU08461000
 csu0818000-2.jpg	M6			CSU08180000
 csu0818000-2.jpg	M6			CSU08190000
Earthing clamp				
Earthing clamp for earthing of the installation to comply with safety requirements. Fix to the lateral of the cable tray. Suits cables from 16 to 70 mm ² . Material: steel.				
 P112470.eps				4571310
Protection strip				
Protection strip. To be used to protect cutted edges in the cable tray. Delivered as roll of 5 m. Material: PVC, black.				
 P146854.eps	5 m			CSU08040000
Cutting sear				
Use manual or electric metal shears to ensure a fast, safe and clean cut of cable tray length material. Material: steel.				
 csu08770100.jpg				CSU08770100
 P147022.eps				CSU08770200
 P147023.eps				CSU08780200
Strip fixing W44				
Modular cable retainer. Suited with double sided self-adhesive tape to be fixed inside the cable tray. Delivered in 10 cm pieces in a bag of 50. Material: PPE.				
 P146804.eps				718469

Support system

Type	Dimensions A/B (mm)	Length C (mm)	Weight kg/pcs	Ref. No.
------	------------------------	------------------	------------------	----------

Claw

Can be used for light double threaded rod installations.
Material: steel, Pre-galvanized.

Claw				CSU08150209
------	--	--	--	--------------------



Inside channel bracket

Inside channel bracket for central suspended threaded rod installation. Use threaded rod M10 and M6 bolts and nuts to fix to cable tray.
Material: steel, Pre-galvanized

Inside channel bracket 70	70			CSU08140709
Inside channel bracket 100	100			CSU08141009
Inside channel bracket 150	150			CSU08141509
Inside channel bracket 200	200			CSU08142009
Inside channel bracket 300	300			CSU08143009



Channel bracket, one sided

Place channel bracket inside perforation on lateral of cable tray. Use threaded rod M10.
Material: steel, Pre-galvanized.

Channel bracket, one sided				CSU08150300
----------------------------	--	--	--	--------------------



Single side channel bracket

Single side channel bracket for threaded rod suspended installation. Use side perforation on lateral of the cable tray to fix bracket to the outside with M6 bolts and nuts and M10 threaded rod with a matching nut.
Material: steel, Pre-galvanized.

Single side channel bracket				CSU08150100
-----------------------------	--	--	--	--------------------



Suspension beam

Suspension beam for double-threaded rod suspended installation. Use bolts M6x10, nuts to fix cable tray to the beam.
Material: steel, Pre-galvanized

Suspension beam 100	100			CSU08041000
Suspension beam 200	200			CSU08043000
Suspension beam 300	300			CSU08044500
Suspension beam 400	400			CSU08046100
Suspension beam 500	500			CSU08047100
Suspension beam 600	600			CSU08048100
Suspension beam 800	800			CSU08047000
Suspension beam 1000	1000			CSU08048000




Outside channel bracket

Outside channel bracket for single threaded rod suspension and fast fixation of cable trays. Fix channel bracket to threaded rod M10 with 2 nuts and use clamping spring to mount cable tray. Not compatible with KB284 cable trays.
Material: steel, Pre-galvanized

Outside channel bracket 70	70			CSU08173000
Outside channel bracket 100	100			CSU08171100
Outside channel bracket 150	150			CSU08171600
Outside channel bracket 200	200			CSU08173000



Support system

Type	Dimensions A/B (mm)		Length C (mm)	Weight kg/pcs	Ref. No.
Clamping spring					
Use clamping spring to fast fix cable tray to outside channel bracket. Material: steel, spring steel					
Clamping spring					CSU08440000



C-Bracket

C-bracket for single central suspended threaded rod installation. Use bolts M6x10, nuts to fix cable tray to the bracket.
Material: steel, electro-galvanized.

C-Bracket Light 70	70				CSU08171209
C-Bracket Light 100	100				CSU08173109
C-Bracket Light 200	200				CSU08173209
C-Bracket Light 300	300				CSU08173309
C-Bracket Light 400	400				CSU08176209
Material: steel, Hot-dip galvanized.					
C-Bracket Medium 70	70				CSU08171200
C-Bracket Medium 100	100				CSU08173100
C-Bracket Medium 150	150				CSU08171500
C-Bracket Medium 200	200				CSU08173200
C-Bracket Medium 300	300				CSU08173300
C-Bracket Heavy 400	400				CSU14174000
C-Bracket Heavy 500	500				CSU14175000
C-Bracket Heavy 600	600				CSU14176000



Threaded rod

Threaded rod for suspended installations.
Material: steel, electro-galvanized.

Threaded rod M10	M10		2000		CSU08050000
Threaded rod M10	M10		3000		CSU08050100



Threaded rod extension

Use threaded rod extension to extend threaded rod length if needed.
Material: steel, electro-galvanized.

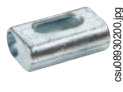
Threaded rod extension M10	M10				CSU08920000
----------------------------	-----	--	--	--	--------------------



Oval nut

Oval nut.
Material: steel, electro-galvanized.

Oval nut M10	M10				CSU08930200
--------------	-----	--	--	--	--------------------



Support system

Type	Dimensions A/B (mm)		Length C (mm)	Weight kg/pcs	Ref. No.
------	------------------------	---	------------------	------------------	----------

Ceiling attachment

Use ceiling bracket for plain ceiling. Fix rod with two pieces of M10 nuts.
Material: steel, Pre-galvanized.



Ceiling attachment					CSU08020000
--------------------	--	--	--	--	-------------

Ceiling attachment-open

Use ceiling bracket for plain ceiling. Fix rod with two pieces of M10 nuts.
Material: steel, Hot-dip galvanized.



Ceiling attachment-open					CSU08020200
-------------------------	--	--	--	--	-------------

Ceiling attachment-adjustable

Use adjustable ceiling bracket for angled ceiling installations. Fix threaded rod with 2 nuts M10.
Material: steel, Hot-dip galvanized.



Ceiling attachment-adjustable					CSU08020100
-------------------------------	--	--	--	--	-------------

Beam clamp

Beam clamp to be used for the installation of threaded rods on I-beams. Fix rod with two pieces of M10 nuts.
Material: steel, spring steel.



Beam clamp 2-3	2-3				CSU08390100
Beam clamp 4-7	4-7				CSU08390200
Beam clamp 8-13	8-13				CSU08390300
Beam clamp 14-20	14-20				CSU08390400

Ceiling bracket 5

Ceiling bracket 5 with fixing rail 24/48 to construct a pendant system. Bolts and nuts not included.
Material: steel, Pre-galvanized.



Ceiling bracket 5					721101
-------------------	--	--	--	--	--------

Support system

Type	Dimensions A/B (mm)	Length C (mm)	Weight kg/pcs	Ref. No.
------	------------------------	------------------	------------------	----------

Clamping bracket

Clamping bracket to be used for installation on I- and H beams. Can be used both horizontally and vertically. Composed from C-profile, frog plates and fastening material.
Material: steel, Hot-dip galvanized.

C-Profile rail	30x30	6000		CSU08430000
Clamp plate 12				CSU08450100
Clamp plate 16				CSU08450200
Tap bolt M6x30				CSU08880000
Slide nut M6				CSU14500109



Vertical piece 2F

Length of the pendant can be extended by using pendant fixing rail 24/48 and rail connector 2FJ.
Material: steel, Hot-dip galvanized.

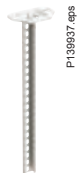
Vertical piece 2F 280	280			717196
Vertical piece 2F 370	370			717197
Vertical piece 2F 505	505			717198
Vertical piece 2F 730	730			717199
Vertical piece 2F 1000	1000			717200
Vertical piece 2F 1500	1500			787276



Vertical piece 2

Vertical piece to be used for lighter installation, central suspended cable trays.
Material: steel, Hot-dip galvanized.

Vertical piece 2 300	300			717191
Vertical piece 2 400	400			717192
Vertical piece 2 500	500			717193
Vertical piece 2 700	700			717194
Vertical piece 2 1000	1000			717195



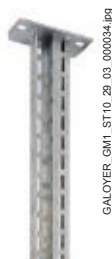
Vertical piece 20 Double

Vertical piece, two-sided, to be used for vertical installation together with Cantilever arm 50, from a ceiling or on a floor. Can also be installed as a cantilever arm on a wall.
Material: steel, Hot-dip galvanized.

Vertical piece 20 Double 505	505			715723
Vertical piece 20 Double 730	730			715724
Vertical piece 20 Double 1000	1000			715725
Vertical piece 20 Double 1495	1495			715726
Vertical piece 20 Double 1990	1990			715727
Vertical piece 20 Double 2980	2980			715728



Support system



Type	Dimensions A/B (mm)	Length C (mm)	Weight kg/pcs	Ref. No.
Vertical piece 7				
To be used together with cantilever arm 80. The cantilever arm is infinitely adjustable along the vertical piece. Material: steel, Hot-dip galvanized.				
Vertical piece 7 200	200			CSU731871
Vertical piece 7 300	300			CSU731872
Vertical piece 7 400	400			CSU731873
Vertical piece 7 500	500			CSU731874
Vertical piece 7 600	600			CSU731875
Vertical piece 7 700	700			CSU731876
Vertical piece 7 800	800			CSU731877
Vertical piece 7 900	900			CSU731878
Vertical piece 7 1000	1000			CSU731879
Vertical piece 7 1100	1100			CSU731880
Vertical piece 7 1200	1200			CSU731881
Vertical piece 7 1300	1300			CSU731882
Vertical piece 7 1400	1400			CSU731883
Vertical piece 7 1500	1500			731884
Vertical piece 7 1600	1600			CSU731885



Pendant / Fixing rail 24/48				
Pendant / Fixing rail for mounting of cantilever arms. Can be suspended from ceiling to ceiling bracket 5 or installed to the wall directly. Material: steel, Pre-galvanized.				
Pendant / Fixing rail 24/48		3000		731717
Pendant / Fixing rail 24/48		6000		731721



Rail connector 2FJ				
Rail connector for extending pendant / fixing rails and vertical piece pendants. Material: steel, Pre-galvanized.				
Rail connector 2FJ				CSU795325



End Plug 28E				
High visibility end plug for enhanced safety and easy identification. Material: PP/TPE, orange.				
End Plug 28E				709021



Cantilever arm 50i				
Cantilever arm to be used for lighter mountings on walls, vertical pieces or pendant/fixing rails. Material: steel, Pre-galvanized.				
Cantilever arm 50i 100	100			791412
Cantilever arm 50i 200	200			791413
Cantilever arm 50i 300	300			791414
Cantilever arm 50i 400	400			791415
Cantilever arm 50i 500	500			CSU795322
Cantilever arm 50i 600	600			CSU795323

Support system

Type	Dimensions A/B (mm)	 Length C (mm)	Weight kg/pcs	Ref. No.
------	------------------------	--	------------------	----------

Cantilever arm 50

Cantilever arm for mounting on walls, pendant/fixing rails or vertical pieces.
Material: steel, Hot-dip galvanized.



Cantilever arm 50 100	100			723432
Cantilever arm 50 150	150			723433
Cantilever arm 50 200	200			723434
Cantilever arm 50 300	300			723436
Cantilever arm 50 400	400			723437
Cantilever arm 50 500	500			723438
Cantilever arm 50 600	600			723439
Cantilever arm 50 800	800			727126
Cantilever arm 50 1000	1000			727128

Cantilever arm 80

Cantilever arm for mounting on vertical piece 7 or on walls by using wall bracket 80.
Material: steel, Pre-galvanized.



Cantilever arm 80 200	200			730450
Cantilever arm 80 250	250			730451
Cantilever arm 80 300	300			730452
Cantilever arm 80 400	400			730453
Cantilever arm 80 500	500			730454
Cantilever arm 80 600	600			730455

Wall bracket 80

For installation of cantilever arm 80 on wall. Fits all widths.
Material: steel, Pre-galvanized.



Wall bracket 80				729216
-----------------	--	--	--	---------------

Fast fixing bracket

The fast fixing bracket used in combination with wall bracket base plate forms a light duty wall bracket with screless fixation of cable trays. The cable tray is fastened to the support beam with two pieces of fast fixing clamps. Not compatible with KB284 cable trays.
Material: steel, Pre-galvanized.



Fast fixing bracket 100	100			CSU04061100
Fast fixing bracket 200	200			CSU08060300
Fast fixing bracket 300	300			CSU04063100
Fast fixing bracket 400	400			CSU08060600
Fast fixing bracket 500	500			CSU08060700

Wall bracket base plate

Wall bracket base plate is required to be able to mount the fast fixing bracket to the wall.
Material: steel, Pre-galvanized.



Wall bracket base plate				CSU08061000
-------------------------	--	--	--	--------------------

Fast fixing clamp

Use 2 pieces of fast fixing clamps to fix cable tray to wall bracket.
Material: steel, spring steel.



Fast fixing clamp 60	60			CSU08490100
Fast fixing clamp 110	110			CSU08490200

Support system

Type	Dimensions A/B (mm)	 Length C (mm)	Weight kg/pcs	Ref. No.
------	------------------------	--	------------------	----------

Wall bracket L piece

Wall bracket to be used for vertical or horizontal installations of cable trays against a wall.
Material: steel, Pre-galvanized.

Wall bracket L piece

CSU14450100



Bolt & nut

Bolts, nuts and washers are delivered in a bag of 100 pieces.
Material: steel, Electro-galvanized & Hot-dip galvanized

Bolt M6x10	M6	10	CSU08462000
Bolt M6x16	M6	16	CSU08463000
Bolt M8x16	M8	16	CSU14711200
Flange nut M6	M6		CSU08461000
Flange nut M8	M8		CSU08891100
Flange nut M10	M10		CSU08890100
T-Bolt 26F M8x30	M8	30	734983
T-Bolt 26F M10x30	M10	30	734864
Nut M6	M6		CSU08180000
Nut M8	M8		CSU08891000
Nut M10	M10		CSU08890000
Washer M6	M6		CSU08190000
Washer M8	M8		CSU08901000
Washer M10	M10		CSU08900000



70			
709021	39	CSU08020100	37
71		CSU08020200	37
715723	38	CSU08040000	18, 34
715724	38	CSU08041000	35
715725	38	CSU08043000	35
715726	38	CSU08044500	35
715727	38	CSU08046100	35
715728	38	CSU08047000	35
717191	38	CSU08047100	35
717192	38	CSU08048000	35
717193	38	CSU08048100	35
717194	38	CSU08050000	36
717195	38	CSU08050100	36
717196	38	CSU08060300	40
717197	38	CSU08060600	40
717198	38	CSU08060700	40
717199	38	CSU08061000	40
717200	38	CSU08090109	17, 33
718469	18, 34	CSU08140709	35
		CSU08141009	35
		CSU08141509	35
		CSU08142009	35
		CSU08143009	35
72		CSU08150100	35
721101	37	CSU08150209	35
723432	40	CSU08150300	35
723433	40	CSU08161003	8, 22
723434	40	CSU08161103	8, 22
723436	40	CSU08161503	8, 22
723437	40	CSU08163003	8, 22
723438	40	CSU08164303	8, 22
723439	40	CSU08166004	8, 22
727126	40	CSU08167004	8, 22
727128	40	CSU08168004	8, 22
729216	40	CSU08171000	35
		CSU08171100	35
		CSU08171200	36
73		CSU08171209	36
730450	40	CSU08171500	36
730451	40	CSU08171600	35
730452	40	CSU08173000	35
730453	40	CSU08173100	36
730454	40	CSU08173109	36
730455	40	CSU08173200	36
731717	39	CSU08173209	36
731721	39	CSU08173300	36
731884	39	CSU08173309	36
734864	41	CSU08176209	36
734983	41	CSU08180000	18, 34, 41
		CSU08190000	18, 34, 41
78		CSU08250109	33
787276	38	CSU08250209	33
		CSU08390100	37
79		CSU08390200	37
791412	39	CSU08390300	37
791413	39	CSU08390400	37
791414	39	CSU08430000	38
791415	39	CSU08440000	36
		CSU08450100	38
		CSU08450200	38
4571310		CSU08461000	18, 34, 41
4571310	18, 34	CSU08462000	18, 34, 41
		CSU08463000	18, 34, 41
		CSU08490100	40
CSU		CSU08490200	40
CSU731871	39	CSU08770100	18, 34
CSU731872	39	CSU08770200	18, 34
CSU731873	39	CSU08780200	18, 34
CSU731874	39	CSU08855000	17, 33
CSU731875	39	CSU08856050	17, 33
CSU731876	39	CSU08870500	17, 32
CSU731877	39	CSU08871000	17, 32
CSU731878	39	CSU08871200	17, 32
CSU731879	39	CSU08871500	17, 32
CSU731880	39	CSU08873000	17, 32
CSU731881	39	CSU08873200	17, 32
CSU731882	39	CSU08876200	17, 32
CSU731883	39	CSU08877200	17, 32
CSU731885	39	CSU08878200	17, 32
CSU795322	39	CSU08880000	38
CSU795323	39	CSU08890000	41
CSU795325	39	CSU08890100	41
CSU04061100	40	CSU08891000	41
CSU04063100	40	CSU08891100	41
CSU08010000	16, 32	CSU08900000	41
CSU08010109	16, 32	CSU08901000	41
CSU08016000	16, 32	CSU08920000	36
CSU08020000	37	CSU08930200	36

CSU08940000	14, 29	CSU31072002	24
CSU08940350	14, 29	CSU31073002	24
CSU08940850	14, 29	CSU31074002	24
CSU08960000	14, 29	CSU31075002	24
CSU08960350	14, 29	CSU31110002	28
CSU08960850	14, 29	CSU31151002	25
CSU08980000	13, 28	CSU31151502	25
CSU14174000	36	CSU31152002	25
CSU14175000	36	CSU31153002	25
CSU14176000	36	CSU31154002	25
CSU14450100	41	CSU31155002	25
CSU14500109	38	CSU31161002	26
CSU14711200	41	CSU31161502	26
CSU23011002	8	CSU31162002	26
CSU23011502	8	CSU31163002	26
CSU23012002	8	CSU31164002	26
CSU23013002	8	CSU31165002	26
CSU23014004	8	CSU31181004	31
CSU26011002	8	CSU31181504	31
CSU26011502	8	CSU31182004	31
CSU26012002	8	CSU31183004	31
CSU26013002	8	CSU31184004	31
CSU26014002	8	CSU31185004	31
CSU26015004	8	CSU31211002	30
CSU26016004	8	CSU31211502	30
CSU28011002	8	CSU31212002	30
CSU28011502	8	CSU31213002	30
CSU28012002	8	CSU31214002	30
CSU28013002	8	CSU31215002	30
CSU28014002	8	CSU31221002	28
CSU28015004	8	CSU31221502	28
CSU28016004	8	CSU31222002	28
CSU30060702	9, 23	CSU31223002	28
CSU30061002	9, 23	CSU31224002	28
CSU30061502	9, 23	CSU31225002	28
CSU30062002	9, 23	CSU31231002	27
CSU30063002	9, 23	CSU31231502	27
CSU30064002	9, 23	CSU31232002	27
CSU30065002	9, 23	CSU31233002	27
CSU30066002	9, 23	CSU31234002	27
CSU30070702	11, 24	CSU31235002	27
CSU30071002	11, 24	CSU31241002	30
CSU30071502	11, 24	CSU31241502	30
CSU30072002	11, 24	CSU31242002	30
CSU30073002	11, 24	CSU31243002	30
CSU30074002	11, 24	CSU31244002	30
CSU30075002	11, 24	CSU31245002	30
CSU30076002	11, 24	CSU31511002	31
CSU30150702	11, 25	CSU31511502	31
CSU30151002	11, 25	CSU31512002	31
CSU30151502	11, 25	CSU31513002	31
CSU30152002	11, 25	CSU31514002	31
CSU30153002	11, 25	CSU31515002	31
CSU30154002	11, 25	CSU31521002	23
CSU30155002	11, 25	CSU31521502	23
CSU30156002	11, 25	CSU31522002	23
CSU30160702	12, 26	CSU31523002	23
CSU30161002	12, 26	CSU31524002	23
CSU30161502	12, 26	CSU31525002	23
CSU30162002	12, 26	CSU33061002	9, 22
CSU30163002	12, 26	CSU33061502	9, 22
CSU30164002	12, 26	CSU33062002	9, 22
CSU30165002	12, 26	CSU33063002	9, 22
CSU30166002	12, 26	CSU33064002	9, 22
CSU30220702	13, 28	CSU33071002	10, 24
CSU30221002	13, 28	CSU33071502	10, 24
CSU30221502	13, 28	CSU33072002	10, 24
CSU30222002	13, 28	CSU33073002	10, 24
CSU30223002	13, 28	CSU33074002	10, 24
CSU30224002	13, 28	CSU33110002	13, 28
CSU30225002	13, 28	CSU33151002	11, 25
CSU30226002	13, 28	CSU33151502	11, 25
CSU30230702	13, 27	CSU33152002	11, 25
CSU30231002	13, 27	CSU33153002	11, 25
CSU30231502	13, 27	CSU33154002	11, 25
CSU30232002	13, 27	CSU33161002	12, 26
CSU30233002	13, 27	CSU33161502	12, 26
CSU30234002	13, 27	CSU33162002	12, 26
CSU30235002	13, 27	CSU33163002	12, 26
CSU30236002	13, 27	CSU33164002	12, 26
CSU31061002	22	CSU33181004	16, 31
CSU31061502	22	CSU33181504	16, 31
CSU31062002	22	CSU33182004	16, 31
CSU31063002	22	CSU33183004	16, 31
CSU31064002	22	CSU33184004	16, 31
CSU31065002	22	CSU33211002	14, 30
CSU31071002	24	CSU33211502	14, 30
CSU31071502	24	CSU33212002	14, 30

CSU33213002	14, 30	CSU36233002	12, 27
CSU33214002	14, 30	CSU36234002	12, 27
CSU33221002	13, 28	CSU36235002	12, 27
CSU33221502	13, 28	CSU36236002	12, 27
CSU33222002	13, 28	CSU36240702	15, 30
CSU33223002	13, 28	CSU36241002	15, 30
CSU33224002	13, 28	CSU36241502	15, 30
CSU33231002	12, 27	CSU36242002	15, 30
CSU33231502	12, 27	CSU36243002	15, 30
CSU33232002	12, 27	CSU36244002	15, 30
CSU33233002	12, 27	CSU36245002	15, 30
CSU33234002	12, 27	CSU36246002	15, 30
CSU33241002	15, 30	CSU36510702	15, 31
CSU33241502	15, 30	CSU36511002	15, 31
CSU33242002	15, 30	CSU36511502	15, 31
CSU33243002	15, 30	CSU36512002	15, 31
CSU33244002	15, 30	CSU36513002	15, 31
CSU33511002	15, 31	CSU36514002	15, 31
CSU33511502	15, 31	CSU36515002	15, 31
CSU33512002	15, 31	CSU36516002	15, 31
CSU33513002	15, 31	CSU36520702	10, 23
CSU33514002	15, 31	CSU36521002	10, 23
CSU33521002	10, 23	CSU36521502	10, 23
CSU33521502	10, 23	CSU36522002	10, 23
CSU33522002	10, 23	CSU36523002	10, 23
CSU33523002	10, 23	CSU36524002	10, 23
CSU33524002	10, 23	CSU36525002	10, 23
CSU36060702	9, 22	CSU36526002	10, 23
CSU36061002	9, 22	CSU38061002	9, 22
CSU36061502	9, 22	CSU38061502	9, 22
CSU36062002	9, 22	CSU38062002	9, 22
CSU36063002	9, 22	CSU38063002	9, 22
CSU36064002	9, 22	CSU38064002	9, 22
CSU36065002	9, 22	CSU38065002	9, 22
CSU36066002	9, 22	CSU38066002	9, 22
CSU36070702	10, 24	CSU38071002	10, 24
CSU36071002	10, 24	CSU38071502	10, 24
CSU36071502	10, 24	CSU38072002	10, 24
CSU36072002	10, 24	CSU38073002	10, 24
CSU36073002	10, 24	CSU38074002	10, 24
CSU36074002	10, 24	CSU38075002	10, 24
CSU36075002	10, 24	CSU38076002	10, 24
CSU36076002	10, 24	CSU38110002	13, 28
CSU36110002	13, 28	CSU38151002	11, 25
CSU36150702	11, 25	CSU38151502	11, 25
CSU36151002	11, 25	CSU38152002	11, 25
CSU36151502	11, 25	CSU38153002	11, 25
CSU36152002	11, 25	CSU38154002	11, 25
CSU36153002	11, 25	CSU38155002	11, 25
CSU36154002	11, 25	CSU38156002	11, 25
CSU36155002	11, 25	CSU38161002	12, 26
CSU36156002	11, 25	CSU38161502	12, 26
CSU36160702	12, 26	CSU38162002	12, 26
CSU36161002	12, 26	CSU38163002	12, 26
CSU36161502	12, 26	CSU38164002	12, 26
CSU36162002	12, 26	CSU38165002	12, 26
CSU36163002	12, 26	CSU38166002	12, 26
CSU36164002	12, 26	CSU38181004	16, 31
CSU36165002	12, 26	CSU38181504	16, 31
CSU36166002	12, 26	CSU38182004	16, 31
CSU36180704	16, 31	CSU38183004	16, 31
CSU36181004	16, 31	CSU38184004	16, 31
CSU36181504	16, 31	CSU38185004	16, 31
CSU36182004	16, 31	CSU38186004	16, 31
CSU36183004	16, 31	CSU38211002	14, 30
CSU36184004	16, 31	CSU38211502	14, 30
CSU36185004	16, 31	CSU38212002	14, 30
CSU36186004	16, 31	CSU38213002	14, 30
CSU36210702	14, 30	CSU38214002	14, 30
CSU36211002	14, 30	CSU38215002	14, 30
CSU36211502	14, 30	CSU38216002	14, 30
CSU36212002	14, 30	CSU38221002	13, 28
CSU36213002	14, 30	CSU38221502	13, 28
CSU36214002	14, 30	CSU38222002	13, 28
CSU36215002	14, 30	CSU38223002	13, 28
CSU36216002	14, 30	CSU38224002	13, 28
CSU36220702	13, 28	CSU38225002	13, 28
CSU36221002	13, 28	CSU38226002	13, 28
CSU36221502	13, 28	CSU38231002	12, 27
CSU36222002	13, 28	CSU38231502	12, 27
CSU36223002	13, 28	CSU38232002	12, 27
CSU36224002	13, 28	CSU38233002	12, 27
CSU36225002	13, 28	CSU38234002	12, 27
CSU36226002	13, 28	CSU38235002	12, 27
CSU36230702	12, 27	CSU38236002	12, 27
CSU36231002	12, 27	CSU38241002	15, 30
CSU36231502	12, 27	CSU38241502	15, 30
CSU36232002	12, 27	CSU38242002	15, 30

CSU38243002	15, 30	CSU76016004	21
CSU38244002	15, 30	CSU76020000	9, 22
CSU38245002	15, 30	CSU76040700	14, 29
CSU38246002	15, 30	CSU76041000	14, 29
CSU38511002	15, 31	CSU76041500	14, 29
CSU38511502	15, 31	CSU76042000	14, 29
CSU38512002	15, 31	CSU76043000	14, 29
CSU38513002	15, 31	CSU76044000	14, 29
CSU38514002	15, 31	CSU76045000	14, 29
CSU38515002	15, 31	CSU76046000	14, 29
CSU38516002	15, 31	CSU76120009	16, 32
CSU38521002	10, 23	CSU76240000	17, 33
CSU38521502	10, 23	CSU78001002	8
CSU38522002	10, 23	CSU78001004	21
CSU38523002	10, 23	CSU78001502	8
CSU38524002	10, 23	CSU78001504	21
CSU38525002	10, 23	CSU78002002	8
CSU38526002	10, 23	CSU78002004	21
CSU70702000	16, 32	CSU78003002	8
CSU70703000	16, 32	CSU78003004	21
CSU70704000	16, 32	CSU78004002	8
CSU70705000	16, 32	CSU78004004	21
CSU70706000	16, 32	CSU78005004	8, 21
CSU71001004	21	CSU78006004	8, 21
CSU71001504	21	CSU78011004	21
CSU71002004	21	CSU78011504	21
CSU71003004	21	CSU78012004	21
CSU71004004	21	CSU78013004	21
CSU71005004	21	CSU78014004	21
CSU71011004	21	CSU78015004	21
CSU71011504	21	CSU78016004	21
CSU71012004	21	CSU78020000	9, 22
CSU71013004	21	CSU78030000	16, 32
CSU71014004	21	CSU78041000	14, 29
CSU71015004	21	CSU78041500	14, 29
CSU71020000	22	CSU78042000	14, 29
CSU71030100	32	CSU78043000	14, 29
CSU71041000	29	CSU78044000	14, 29
CSU71041500	29	CSU78045000	14, 29
CSU71042000	29	CSU78046000	14, 29
CSU71043000	29	CSU78120009	16, 32
CSU71044000	29	CSU78240000	17, 33
CSU71045000	29		
CSU71120000	32		
CSU71240000	33		
CSU73001002	8		
CSU73001004	21		
CSU73001502	8		
CSU73001504	21		
CSU73002002	8		
CSU73002004	21		
CSU73003002	8		
CSU73003004	21		
CSU73004004	8, 21		
CSU73011004	21		
CSU73011504	21		
CSU73012004	21		
CSU73013004	21		
CSU73014004	21		
CSU73020000	9, 22		
CSU73030000	16, 32		
CSU73041000	14, 29		
CSU73041500	14, 29		
CSU73042000	14, 29		
CSU73043000	14, 29		
CSU73044000	14, 29		
CSU73120009	16, 32		
CSU73240000	17, 33		
CSU76000702	8, 21		
CSU76001002	8		
CSU76001004	21		
CSU76001502	8		
CSU76001504	21		
CSU76002002	8		
CSU76002004	21		
CSU76003002	8		
CSU76003004	21		
CSU76004002	8		
CSU76004004	21		
CSU76005004	8, 21		
CSU76006004	8, 21		
CSU76010702	8, 21		
CSU76011004	21		
CSU76011504	21		
CSU76012004	21		
CSU76013004	21		
CSU76014004	21		
CSU76015004	21		



Green Premium™

Endorsing the most eco-friendly products in the industry



Green Premium is the only label that allows you to effectively develop and promote an environmental policy whilst preserving your business efficiency. This ecolabel guarantees compliance with the most up-to-date environmental regulations, but it does more than this.

Over 75% of Schneider Electric manufactured products have been awarded the Green Premium ecolabel



Discover what we mean by green

Check your products!

Schneider Electric's Green Premium ecolabel is committed to offering transparency, by disclosing extensive and reliable information related to the environmental impact of its products:

RoHS

Schneider Electric products are subject to RoHS requirements at a worldwide level, even for the many products that are not required to comply with the terms of the regulation. Compliance certificates are available for products that fulfil the criteria of this European initiative, which aims to eliminate hazardous substances.

REACH

Schneider Electric applies the strict REACH regulation on its products at a worldwide level, and discloses extensive information concerning the presence of SVHC (Substances of Very High Concern) in all of these products.

PEP: Product Environmental Profile

Schneider Electric publishes the most complete set of environmental data, including carbon footprint and energy consumption data for each of the lifecycle phases on all of its products, in compliance with the ISO 14025 PEP ecopassport program. PEP is especially useful for monitoring, controlling, saving energy, and/or reducing carbon emissions.

EoLI: End of Life Instructions

Available at the click of a button, these instructions provide:

- Recyclability rates for Schneider Electric products.
- Guidance to mitigate personnel hazards during the dismantling of products and before recycling operations.
- Parts identification for recycling or for selective treatment, to mitigate environmental hazards/ incompatibility with standard recycling processes.

Life Is On

Schneider
Electric

Schneider Electric Industries SAS

35, rue Joseph Monier
CS 30323
92506 Rueil Malmaison Cedex
France

RCS Nanterre 954 503 439
Capital social 896 313 776 €
www.schneider-electric.com

11-2018
LSB03157EN

© 2018 - Schneider Electric. All Rights Reserved.
All trademarks are owned by Schneider Electric Industries SAS or its affiliated companies.

This document has been
printed on recycled paper

