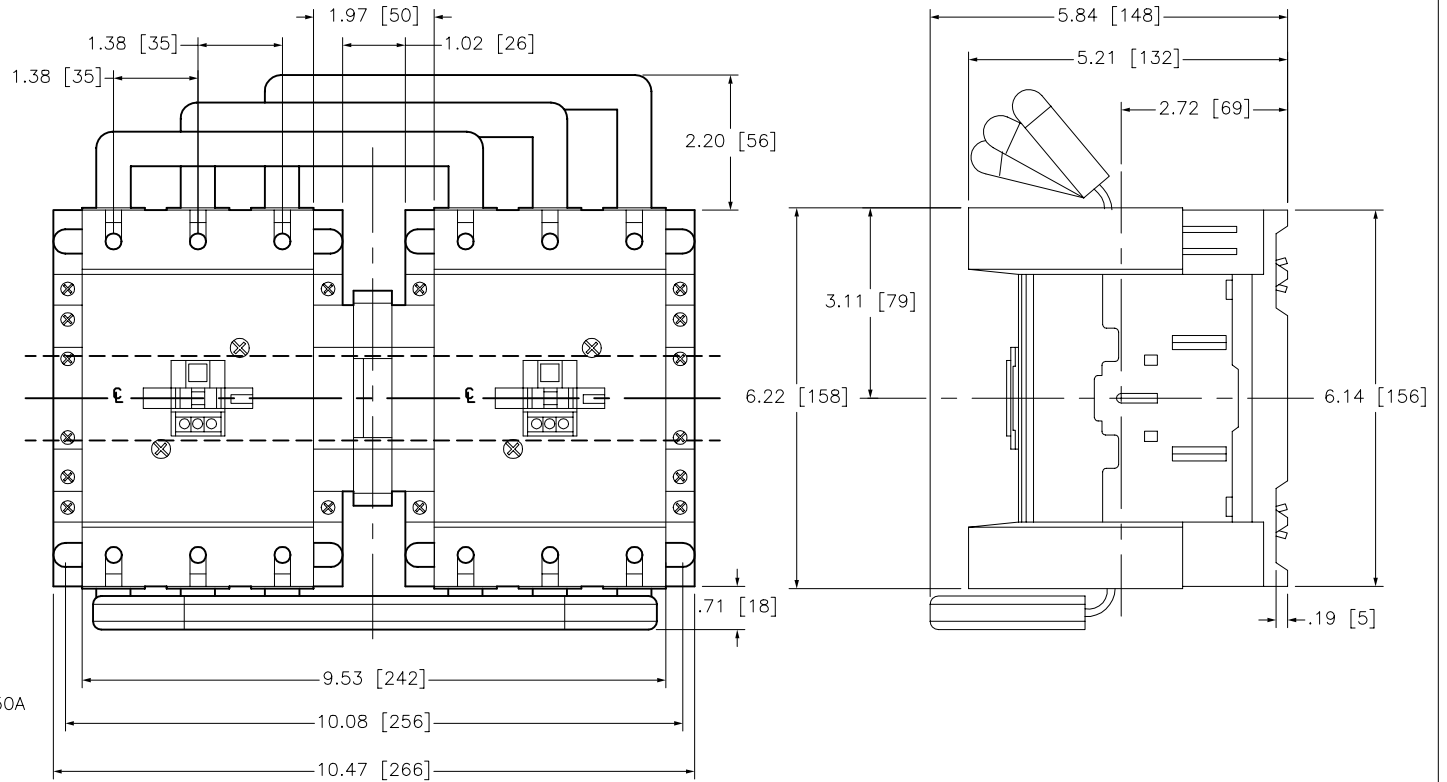


COIL VOLTAGE CODES TABLE: CODE (2)

VOLTS	24	42	48	110	115	230	240	380	400	415	440	500	
TYPE	HZ												
AC	50	B5	D5	E5	F5	FE5	P5	U5	Q5	V5	N5	R5	S6
	60	B6	-	E6	F6	-	-	U6	Q6	-	-	R6	-
	50/60	B7	D7	E7	F7	FE7	P7	U7	Q7	V7	N7	R7	S7
VOLTS	24	48	60	72	110	125	220	250	440				
DC	BD	ED	ND	SD	FD	GD	MD	UD	RD				

**MAXIMUM POWER RATINGS FOR 3PH MOTORS
50/60 HZ AC3 DUTY**

CODE (1)	THREE PHASE			
	200V	230V	460V	575V
15	30 HP	40 HP	75 HP	100 HP
50	40 HP	50 HP	100 HP	125 HP



Catalog Number: LC2 D115(1)(2), LC2 D150(1)(2)
 Ratings: LC2D115:600V/115A; LC2D150:600V/150A
 UL File/CCN: E48539/NLDX
 CSA File/Class: LR43364/3211 04
 Meets Standards: IEC 60947-4
 Weight: 6.5 (D115), 6.66 (D150)
 Wire Size: Power #8-250 MCM / Control #10-#18
 Termination Method: Screw Clamp
 Terminal torque: 100 LB-IN
 Mounting Hwd.: 35mm DIN rail, #10 screws

"THE SQUARE D COMPANY HAS PROPRIETARY RIGHTS TO THE INFORMATION CONTAINED HEREON. THIS INFORMATION REMAINS THE PROPERTY OF SQUARE D COMPANY AND MAY BE USED ONLY IN CONFORMANCE WITH INSTRUCTIONS ISSUED BY SQUARE D COMPANY. USER SHOULD VERIFY DRAWINGS ARE TO THE LATEST/CURRENT REVISION PRIOR TO INCORPORATING IN A DESIGN FILE."

DO NOT SCALE DRAWING
UNLESS OTHERWISE SPECIFIED DIMENSIONS ARE IN INCHES

THIRD ANGLE PROJECTION
 TOLERANCES
 UNLESS OTHERWISE SPECIFIED
 2 PLACE DECIMALS ± .01

IEC CONTACTOR
LC2 D1(1)(2)

SQUARE D COMPANY

DWG# LC2D_115_150_0_OD
NO.