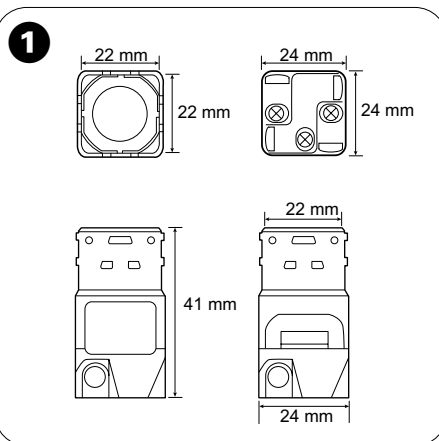


41E2PBSWM-VW
PDL356PB2MBTW-VW41E2PBSWMZ-VW
PDL356PB2MBTZ-VW

Wiser™



About this product

The Iconic Connected Switch 2 AX operates as a switch "out-of-the-box", with no configuration needed. The switch is available with both Bluetooth and Zigbee connectivity.

- Switch with BLE default mode (41E2PBSWM-VW, PDL356PB2MBTW-VW)
The switch can be paired to a mobile phone and the Wiser by SE app. In this case, the switch can be optionally configured as a delay timer/run-on timer. The switch LED indicator behaviour can also be configured, if desired.
- Switch with Zigbee default mode (41E2PBSWMZ-VW, PDL356PB2MBTZ-VW)
The switch can optionally be used as one device in a Wiser Hub network. To do this, the switch must be paired to the Wiser Hub via the Wiser by SE app.

1 Dimension drawing

Mounting and connection

⚠ ⚠ DANGER

HAZARD OF ELECTRIC SHOCK, OR ARC FLASH

- It is illegal for persons other than an appropriately licensed electrical contractors or other persons authorised by legislation to work on the fixed wiring of any electrical installation.
- To comply with all safety standards, the device must be used only for the purpose described in this instruction and must be installed in accordance with the wiring rules and regulation in the location where it is installed.
- Lock out and tag the input circuit before accessing the wiring connections.
- The Locking Bar on the grids must be set to the Closed position to ensure that the device cannot be removed during normal operation.
- There are no user serviceable parts inside the device

Failure to follow these instructions will result in death or serious injury.

⚠ CAUTION

EQUIPMENT DAMAGE HAZARD

- Install the device according to instructions in this document.
- Pay attention to the specifications and wiring diagrams related to the installation.
- Do not use the device for any other purpose than specified in this instruction.
- Dropping the device may damage the internal components. Check that the device operates after being dropped or if physical damage is shown.

Failure to follow these instructions can result in minor injury or equipment damage.

NOTICE

EQUIPMENT DAMAGE HAZARD (LOAD AND OPERATION)

- Operation of the device at elevated temperatures or voltages outside of specification (240 V a.c. and 25 °C) may cause the over-temperature protection circuitry to operate.
- Reduce the size of the connected load or use a different brand of lamp to prevent recurrence.
- Do not operate the product for prolonged periods in extreme conditions.

Failure to follow these instructions can result in equipment damage.

NOTICE

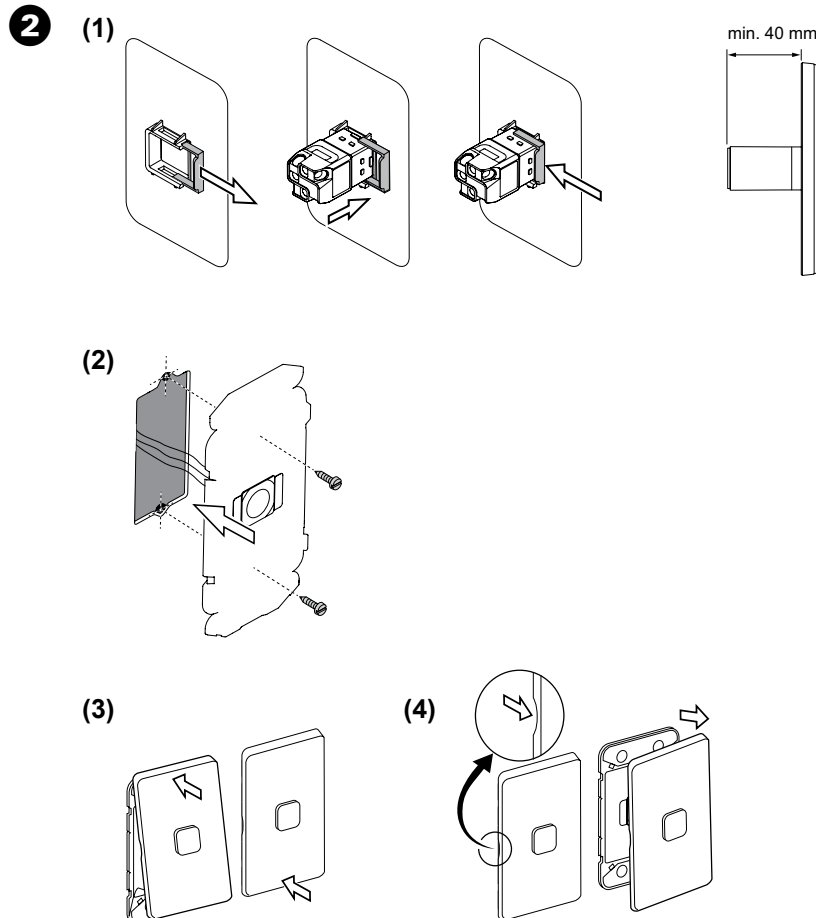
MAXIMUM LOAD RATINGS APPLY

Ensure that the number of low voltage lighting transformers connected to a single device does not exceed the maximum load rating of the device.

Failure to follow these instructions can result in equipment damage.

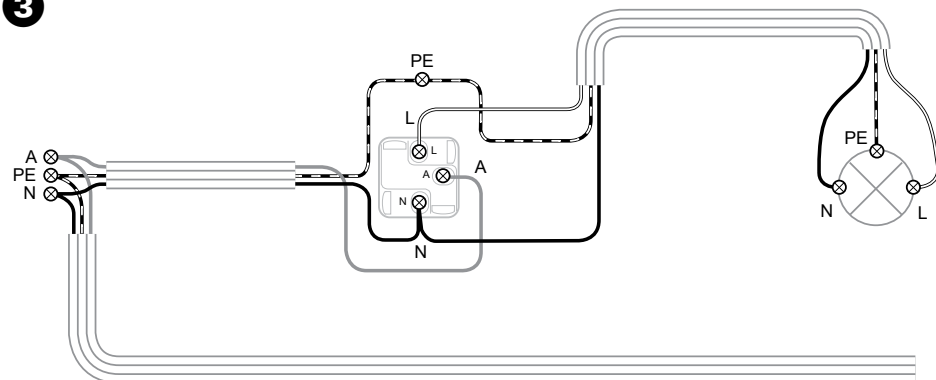
2 Installation

- (1) Fit the module to the grid. Consider the depth of the wall box.
- (2) Mount the grid.
- (3) Install the skin.
- (4) Option: How to remove the skin.



JYT55068

3



4



3 Wiring and connections

Typical installation using Iconic Connected Module

A = Active

N = Neutral

L = Load

PE = Protective Earth

4 Reading the full device user guide online

Scan the QR code for complete information about the device, including operation, configuration and using the product with Bluetooth or in a Wiser system.

Technical data

| | |
|---|--|
| Operating voltage | 220 – 240 V AC, 50 Hz |
| Max. load rating | 2 A |
| Resistive load | |
| MV halogen load | |
| Electronic LV lighting transformers | 2 A |
| LED lighting drivers | |
| Linear fluorescent ballasts | |
| Inductive load (e.g. exhaust fan) | 2 A @ $\cos \varphi=0.6$ |
| M-rating | M.8 |
| Switching technique | Relay |
| Protection | Over temperature: Yes Short circuit: No Over-current fuse: No Thermal protection: Yes |
| LED indicator | Yes |
| Technology type | Bluetooth low energy Zigbee |
| Operating frequency: | 2.405 GHz to 2.48 GHz |
| Max. radio-frequency power transmitted: | 2.5 mW |
| Mutli-gang plate capacity | Max 6 primary mechs per plate |
| Compatible plate ranges | Iconic, Iconic Styl, Iconic Essence, Pro Series |
| Mounting centres | 84 mm pattern plate |
| Compliance | Safety: AS/NZS 60669.2.1 EMC: AS/NZS 60669.2.1 RF: AS/NZS 4268 |
| Environmental rating | IP20 (designed for indoor use only) |
| Operating humidity | 5 % – 90 % relative humidity, non-condensing |
| Specifications typical at 25 °C | |

Trademarks

- Zigbee® is a registered trademark of the Connectivity Standards Alliance.
- Bluetooth® is a registered trademark owned by Bluetooth SIG, Inc.
- Wiser is a trademark and the property of Schneider Electric, its subsidiaries and affiliated companies.

Other brands and registered trademarks are the property of their respective owners.

Customer Care

Warranty information

We warrant this product for 2 years. See Warranty links below.

Schneider Electric (Australia) Pty Ltd

33-37 Port Wakefield Road, Gepps Cross SA 5094

Customer Care: 13 73 28

Email: customercare.au@se.com

Warranty: <https://www.clipsal.com/warranty>

www.clipsal.com

Schneider Electric (NZ) Ltd

Level 2, Building 6, 60 Highbrook Drive

Highbrook, Auckland 2013

Customer Care: 0800 652 999

Email: sales@nz.schneider-electric.com

Warranty: <https://www.se.com/nz/en/about-us/legal/terms-and-conditions.jsp>

www.pdl.co.nz