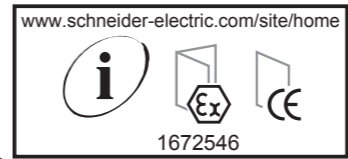
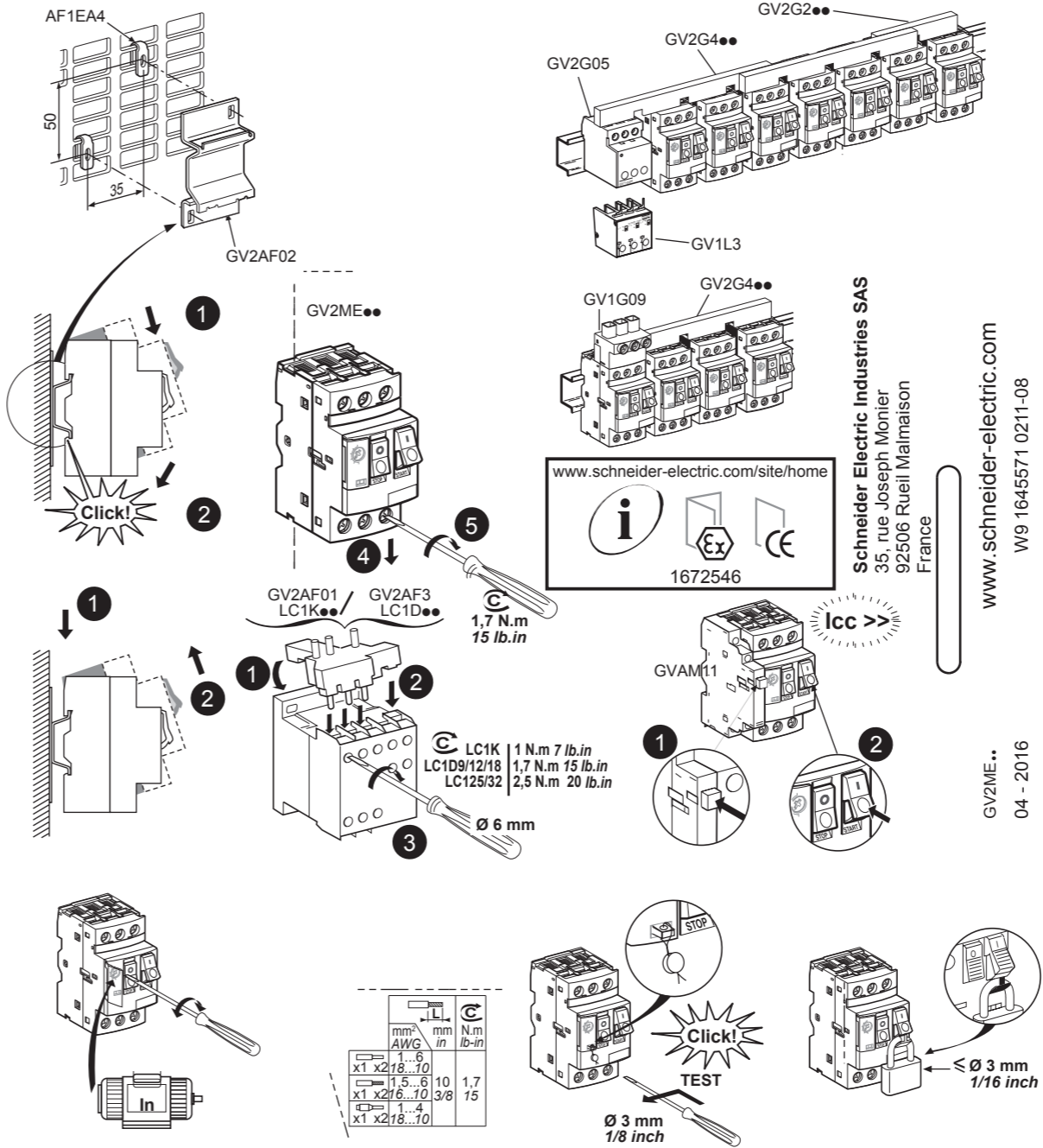
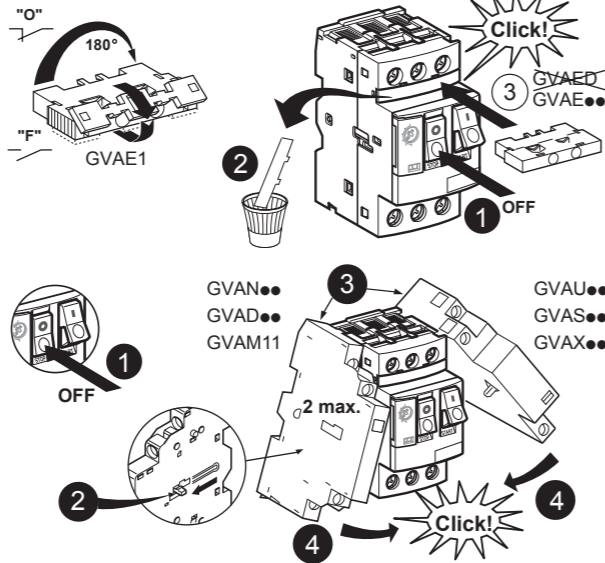


**⚠ ⚠ DANGER / 危险**  
**HAZARD OF ELECTRIC SHOCK, EXPLOSION, OR ARC FLASH**  
 Disconnect all power before servicing equipment.  
 Failure to follow these instructions will result in death or serious injury.  
 电击、爆炸或电弧闪光危险  
 在此电力设备上进行操作时，请先断开所有电源  
 不遵循上述规定将可能导致人员伤亡。



Schneider Electric Industries SAS  
 35, rue Joseph Monier  
 92506 Rueil Malmaison  
 France

www.schneider-electric.com  
 W9 1645571 0211-08

GV2ME  
 04 - 2016