

Actassi S-One RJ45 connectors

# Fast and trouble-free network connectivity

One-piece design with superior performance



# 50%

The one-piece Actassi S-One connectors  
are up to 50% faster to connect



## It's about speed

The only way to provide a truly seamless end-to-end network connectivity is to make sure that every component of your network has the ability to excel. That's what we have done with Actassi S-One.

Our new range of RJ45 connectors exceeds component hardware certification for international standards, such as ISO/IEC 11801 amendment 2:2010 for Cat 6A, ensuring optimized network performance. Since the Actassi S-One connectors are a one-piece design, they can make your installations up to 50% quicker to wire. So to put it simply, Actassi S-One is all about performance, speed and complete peace of mind.

## And seamless end-to-end connectivity!

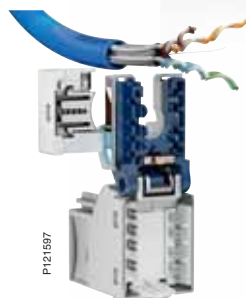


# It's a complete team where every single member is the Pro you need

It all started with a question. What could be done to speed up each installation? Interviewing a large number of European installers about their installation routines, confirmed our theory. There is just one logical answer – get rid of all those loose parts and turn the connector into a one-piece design!

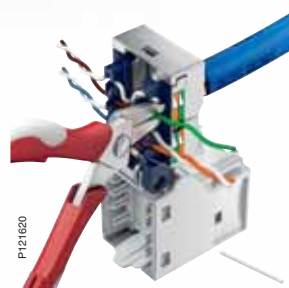
## Innovative one-piece design for faster and safer installations

Without any loose parts the Actassi S-One connector is more compact, easier to handle and up to 50% faster to connect. The connector is delivered open, ready to connect. It has an automatic 360° cable earthing, a simple locking termination and a very smart locking function. The robust one-piece design is suitable for all applications, and in the Actassi S-One range you'll find both shielded and unshielded connectors of all categories.



Ready...

Insert the cable in the central U-shaped entry.



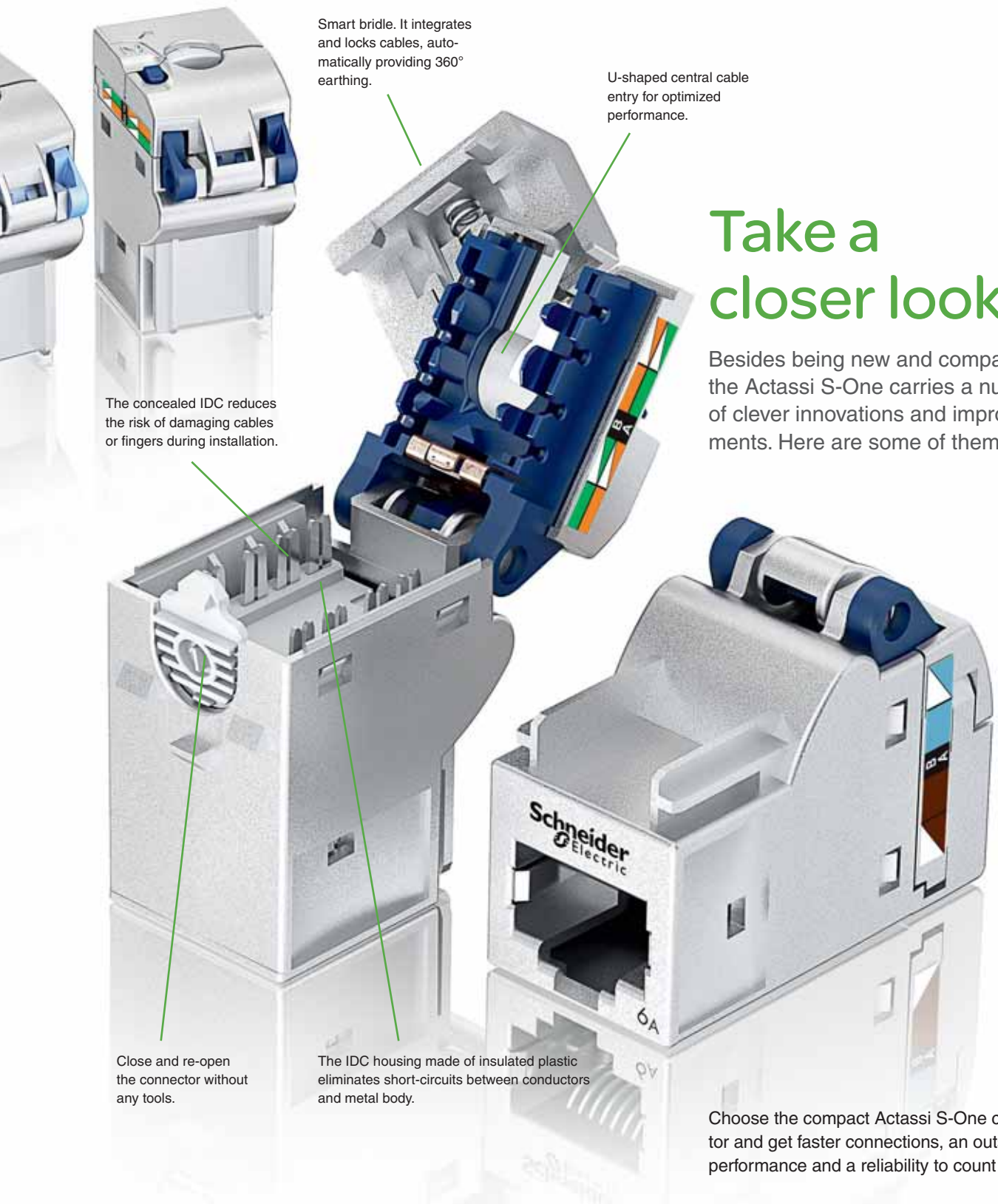
Steady...

Close the smart bridle – it will automatically lock the cable and provide 360° earthing.



Done.

Shut the connector. A "click" confirms that it's locked into its firm and reliable position.



Smart bridle. It integrates and locks cables, automatically providing 360° earthing.

U-shaped central cable entry for optimized performance.

The concealed IDC reduces the risk of damaging cables or fingers during installation.

Close and re-open the connector without any tools.

The IDC housing made of insulated plastic eliminates short-circuits between conductors and metal body.

## Take a closer look

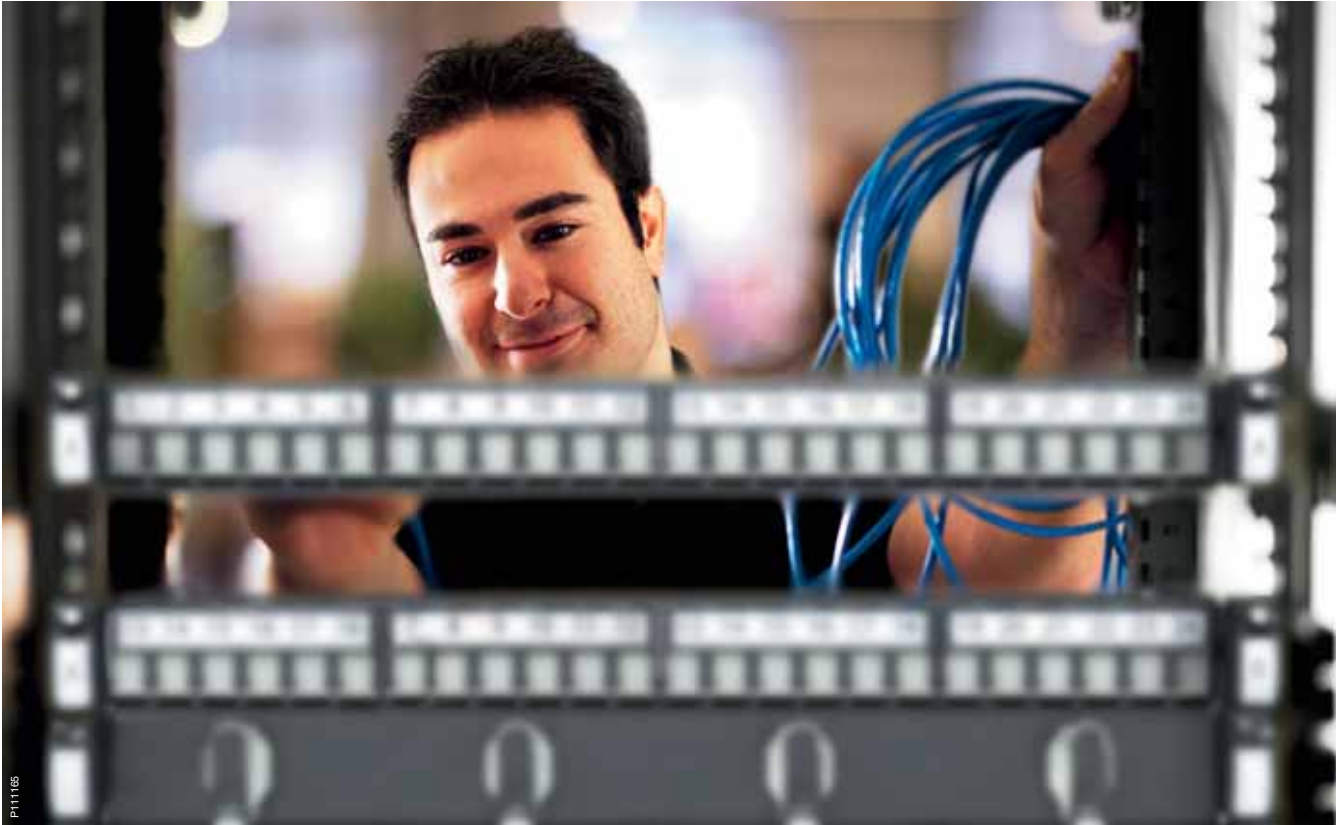
Besides being new and compact, the Actassi S-One carries a number of clever innovations and improvements. Here are some of them.

Choose the compact Actassi S-One connector and get faster connections, an outstanding performance and a reliability to count on.

# Actassi S-One



# Trouble-free installations and complete peace of mind



P11165

## A one-piece connector with outstanding performance

The one-piece design makes the installation fast and trouble-free. Delivered in an open position, the connector is ready to connect. The U-shaped cable entry makes installation simple, the 360° cable earthing is automatic and a colour-coded wire organizer helps performance identification.

- Full compliance with ISO/IEC 11801 and 2:2010 for Cat 6A
- Delivered open, ready to connect
- No loose parts – easy to handle
- Simple locking termination and locking function
- Robust design suitable for all applications
- Re-opened in two clicks



P121601

# Actassi S-One has all the smart details

## U-shaped cable entry with a smart bridle

Despite being compact in size, the connector has enough space inside for your work. All functions are designed to ease your installation.



Smart bridle with elastomer insert for cable locking reduces risk of damaging cables.

U-shaped cable entry. Easy access for all cables.



Central cable entry for optimized performance.



Automatic 360° earthing with spring-loaded locking and earthing bridle.



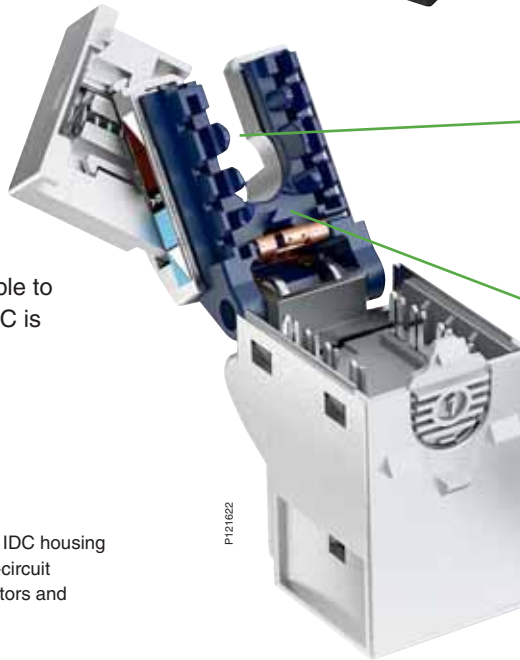
Integrated earth-drain contact provides double earthing.

## Safe and automatic 360° earthing

Actassi S-One easily provides automatic earthing without any tools.

## Protected IDC

With Actassi S-One it's nearly impossible to damage cables or fingers, since the IDC is concealed in a cavity.



Insulated plastic IDC housing eliminates short-circuit between conductors and metal body.

## Ergonomic design



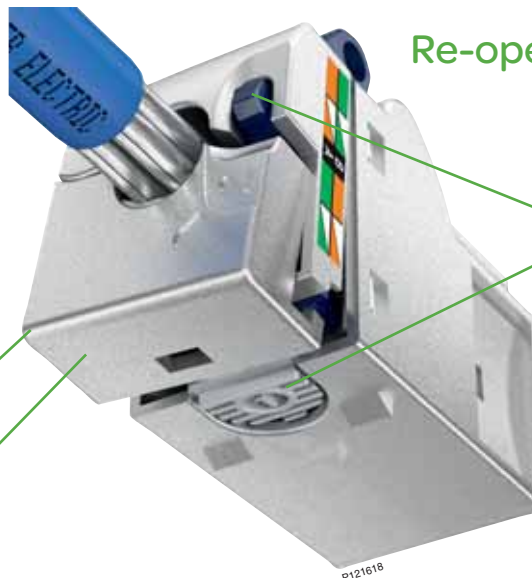
Installing shouldn't be painful! So in the Actassi S-One range it isn't.

Bridle with elastomer insert (unshielded) for convenient locking and soft touch.

Smooth design with rounded edges.

Touch-friendly materials.

## Re-open in two clicks



You can hear the Actassi S-One opening and closing.

Quick-release buttons for tool-less re-opening.

Reduced risk of damaging connections.

Re-close with a simple click-click.

# The range is colour-coded

The Actassi S-One wire organizers are colour-coded to make performance identification safer and easier. Both shielded and unshielded connectors are coded according to the same system. Dark blue for Cat 6<sub>A</sub>, light blue for Cat 6 and green for Cat 5e.

## Practical eco-box

- Box of 12 connectors.
- Connectors delivered open, ready to connect.
- Cardboard package for easy recycling.

Integrated hook for the 19" rack.



## Shielded

The shielded Actassi S-One connectors have two very time saving and safe features. It's the spring-loaded bridle for locking and automatic 360° earthing, and the integrated earth drain contact, which provides efficient double earthing.

## Unshielded

The unshielded Actassi S-One connectors have a smooth feel. The design promotes safety and comfort by its finely contoured shape, edges and elastomer insert.



## Full compliance with ISO/IEC 11801 amd 2:2010 for Cat 6<sub>A</sub>

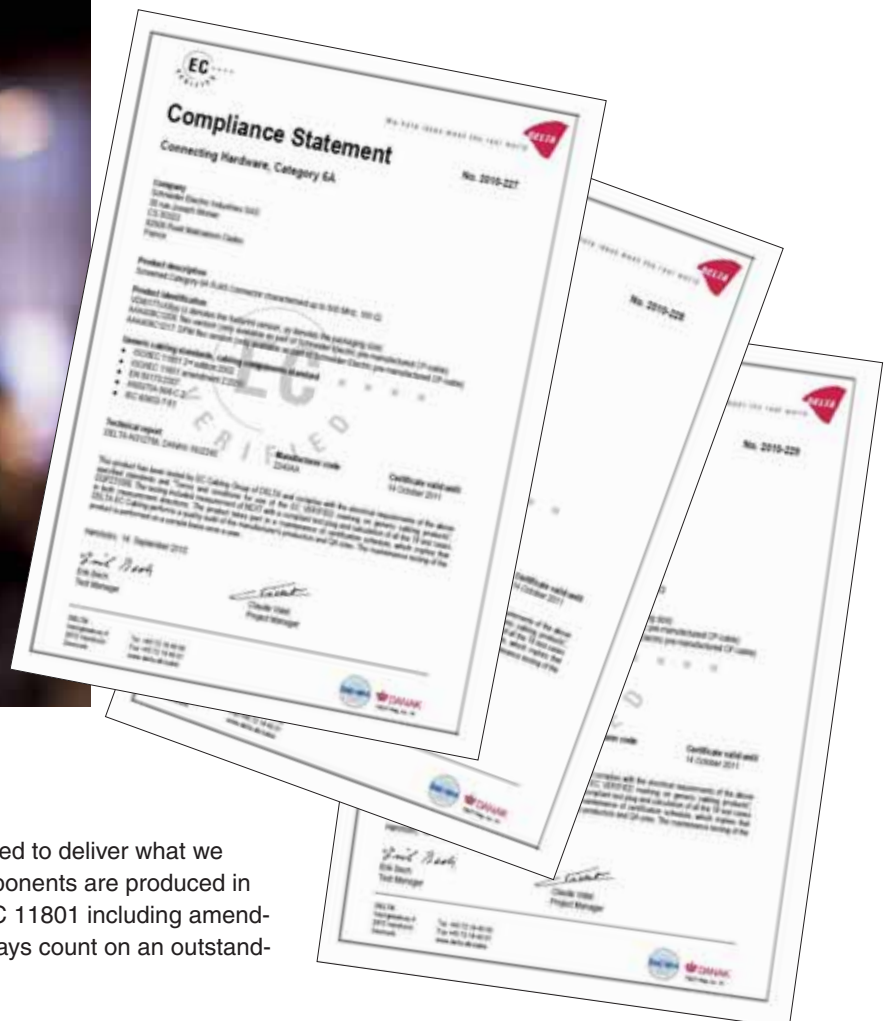
To get your complete network installation classified you need to work with classified components. That's why you should choose our solutions. We provide seamless end-to-end connectivity through safe, speedy and reliable network installations. We are constantly adjusting and updating our portfolio, and at the same time making sure that they are fully compatible with older and future solutions.



## Cat 6A

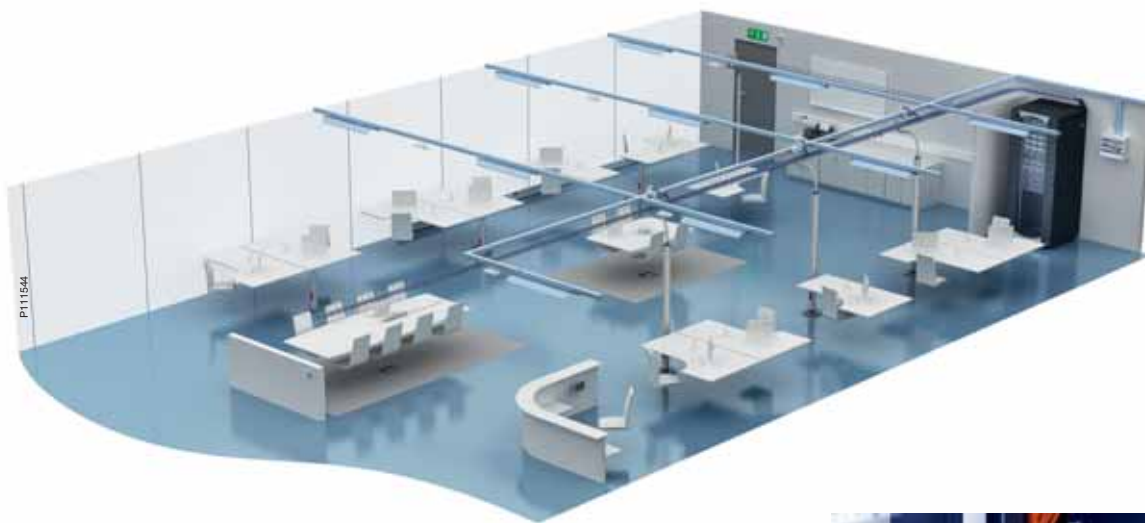
## Cat 6

## Cat 5e



Every part in our Actassi range is certified to deliver what we claim they will. The Actassi S-One components are produced in Europe and fully compliant with ISO/IEC 11801 including amendment 2:2010 for Cat 6A, so you can always count on an outstanding performance and reliability.

# Ensuring end-to-end connectivity



## TOP – Total Office Performance system

Actassi is part of TOP, a system including everything needed to set up an integrated office space infrastructure and control solution. From power, data and controls distribution, to emergency lighting, workspace management and network connectivity – all with a total flexibility. So when you choose Actassi S-One you will get a truly seamless end-to-end connectivity!



## Actassi 19" panels

The construction of the Actassi 19" patch panels is based on the same ideas as Actassi S-One: To ease and speed up your work. Finally IT is easy!



## Wiring devices

Match the network installation with the surrounding wiring devices design. We have a wide range of wiring devices, all designed to integrate network connections.



Altira



Unica



System M 2.0

## OptiLine installation system

For a truly flexible and user-friendly network solution, add the OptiLine installation system. The movable poles, posts and furniture boxes allow people to connect and work exactly where they want.



# Actassi S-One – the full range

## Actassi S-One RJ45 connectors

- Performance categories: Cat 6<sub>A</sub>, 6 and 5e, shielded and unshielded.
- Material: Shielded in zamak, unshielded in ABS plastic.
- Size: Height 28 mm, width 18 mm, depth 35 mm.
- Applicable standards:
  - ISO/IEC 11801 amd 2:2010, class EA permanent link and channel.
  - IEC 60603-7-51 Cat 6<sub>A</sub> connecting hardware.
  - ANSI/TIA-568-C.2 Cat 6<sub>A</sub> connecting hardware.
- One-piece design and U-shaped cable entry.
- Tool-less IDC termination.
- Earthing (shielded): Metallic, 360° self-adjusting, plus drain wire contact.
- Operational temperature range: -40° C to + 70° C.

### S-One C6<sub>A</sub> – Cat 6<sub>A</sub>

Description	Qty/pack	Reference
RJ45 Connector Cat 6 <sub>A</sub> Unshielded	12	VDIB1772XU12
RJ45 Connector Cat 6 <sub>A</sub> Unshielded	96	VDIB1772XU96

P121213



P121216



RJ45 Connector Cat 6 <sub>A</sub> Shielded	12	VDIB1772XB12
RJ45 Connector Cat 6 <sub>A</sub> Shielded	96	VDIB1772XB96

### S-One C6 – Cat 6

Description	Qty/pack	Reference
RJ45 Connector Cat 6 Unshielded	12	VDIB17726U12
RJ45 Connector Cat 6 Unshielded	96	VDIB17726U96

P121212



P121215



RJ45 Connector Cat 6 Shielded	12	VDIB17726B12
RJ45 Connector Cat 6 Shielded	96	VDIB17726B96

### S-One C5e – Cat 5e

Description	Qty/pack	Reference
RJ45 Connector Cat 5e Unshielded	12	VDIB17725U12
RJ45 Connector Cat 5e Unshielded	96	VDIB17725U96

P121211



P121214



RJ45 Connector Cat 5e Shielded	12	VDIB17725B12
RJ45 Connector Cat 5e Shielded	96	VDIB17725B96

---

**Schneider Electric Industries SAS**

35 rue Joseph Monier  
92500 Rueil-Malmaison  
France  
[www.schneider-electric.com](http://www.schneider-electric.com)

As standards, specifications and designs change from time to time, please ask for confirmation of the information given in this publication.



*This document has been printed  
on ecological paper*

Publishing: Schneider Electric Industries SAS  
Design:  
Printing: