



Application Guide
Multi Gang Surround

CAT. NO.

KB-21

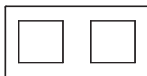
KB-31

KB-41

Vivace

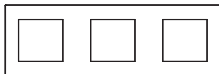
Thank you for choosing **Schneider Electric** Vivace Multi Gang Surround. To ensure proper application of our product, please read through the following information before installation and use.

This application guide applies to the following Vivace products.



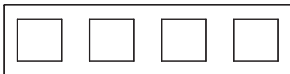
Cat No.
KB-21

Description
Twin Gang
Surround



KB-31

Triple Gang
Surround



KB-41

Quadraple Gang
Surround

SPECIFICATIONS

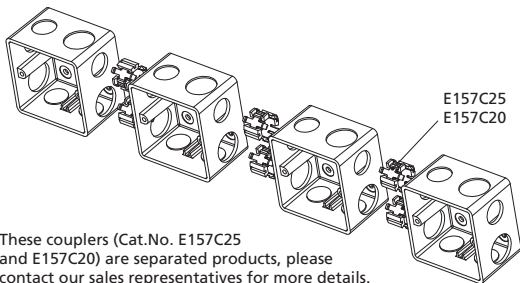
Dimension : KB-21, 146mm x 86mm
KB-31, 258mm x 86 mm
KB-41, 344mm x 86 mm

IMPORTANT NOTE

1. Electrical installation must be carried out by a qualified electrician.
2. Please check your local wiring regulations before actual installation.

INSTALLATION DIAGRAM

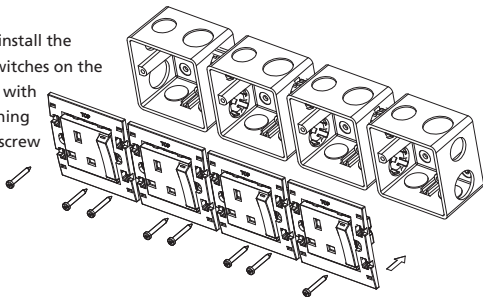
Step 1: Link up wall boxes with couplers*



* These couplers (Cat.No. E157C25 and E157C20) are separated products, please contact our sales representatives for more details.

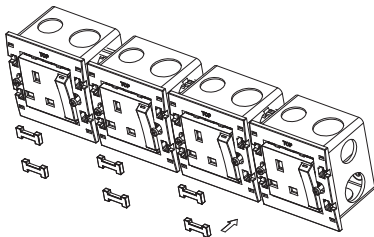
Step 2:

Align and install the sockets / switches on the wall boxes with pre-tightening mounting screw



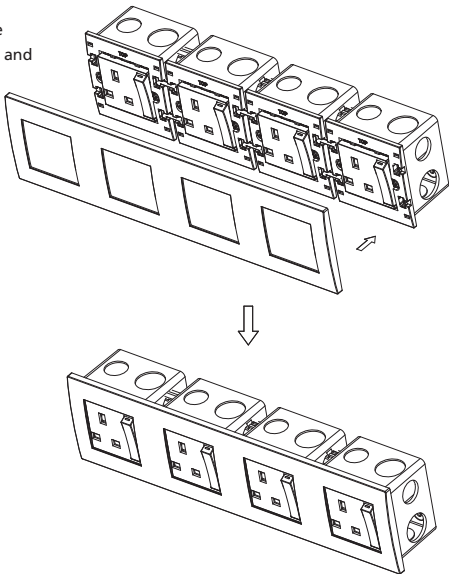
Step 3:

Place the connectors to link up the sockets / switches



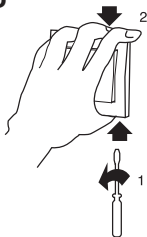
Step 4:

Fully tighten the
mounting screw and
cover with
surround



REMOVING THE SURROUND

1. To remove the Surround, carefully insert a screwdriver between the Surround and the wall surface. Then twist the screwdriver to dislodge the Surround from the Gridplate.
2. Use the other hand to support and remove the Surround.



PRODUCT CARE

When cleaning, use a soft damp cloth / tissue to remove dust or dirt. Ensure the product is switched off during cleaning. Use very mild dishwashing detergent solution only. **DO NOT USE** caustic cleaning agents.