



Application Guide
Do Not Disturb and
Clean Up Room Switches

CAT. NO.
KB31BD
KB31BD_C

Vivace

Thank you for using **Schneider Electric** Vivace Hotel SKU. Please read the following important information before installation and use.

This application guide applies to the following product.

Cat No.

Description



KB31BD

Do Not Disturb with Bell Press



KB31BD_C

Do Not Disturb and Clean Up Room with Bell Press

Remarks: Surround is not included for Reference No. with Suffix "GA"

SPECIFICATIONS

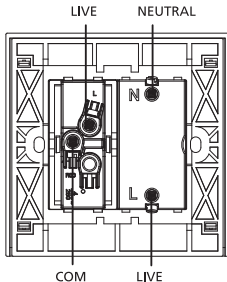
Voltage	: 250VAC
Amperage	: 10A for Bell Press
Dimension	: 86mm x 86mm
Mounting Centre	: 60.3mm
Compliance	: IEC 60669-1, MS IEC 60669-1, SS227

IMPORTANT NOTE

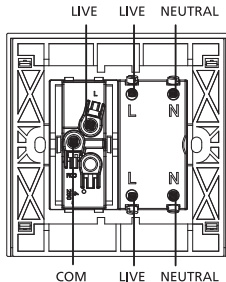
1. Electrical installation must be carried out by a qualified electrician.
2. Please check your local wiring regulations before actual installation.

WIRING DIAGRAM

KB31BD

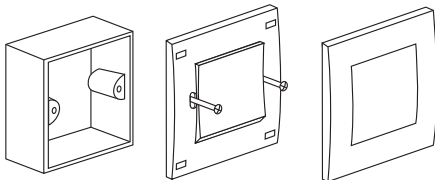


KB31BD_C



MOUNTING INSTRUCTION

Please refer to the following diagram for proper installation.



Remarks: For surround mounting, align the clip locks on the faceplate and press firm on the surround. Complete engagement of the clip locks is indicated by a clear “click” sound.

