

Clipsal Saturn™ Range Switches

4000 Series

20A/16AX 250V a.c.

Installation Instructions

Fascia Fitment

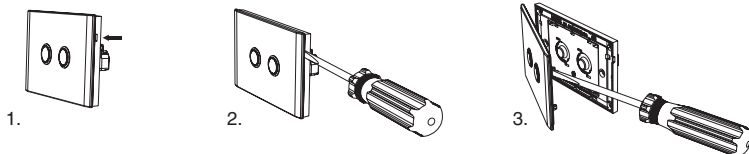
To ensure correct fitment of fascia to grid plate:

1. insert top fascia clips into the appropriate grid location
2. once inserted “snap-in” bottom of fascia.

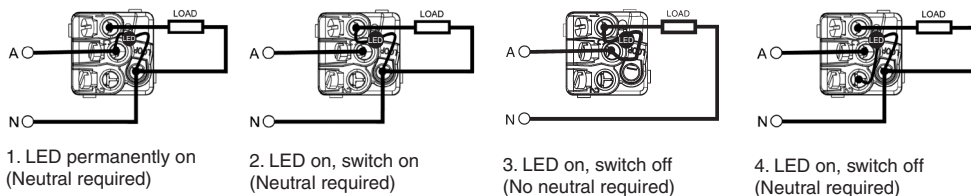


Fascia Removal

1. Locate screwdriver slot on the edge of the product.
2. Insert a flat blade screwdriver into the slot.
3. Using a levering action, remove the front fascia.



Wiring Diagrams/LED Indicator Options

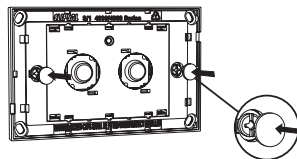


NOTES:

- LED is factory fitted and is not removable.
- LED does not have to be connected, if not required.
- The LED wired across switch contacts (in option 3) may cause some brands of compact fluorescent lamps to flicker when the switch is turned off. This does not cause any damage to the compact fluorescent lamp, but can be rectified by using the Neutral (as per option 4).

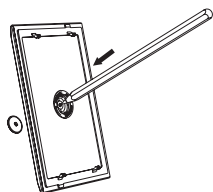
Fitting Screw Caps

1. Mount switch to wall.
2. Push in screw caps over mounting screws to ensure electrical isolation.

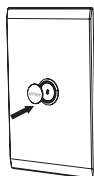


WARNING: Screw caps must be fitted when product is installed.

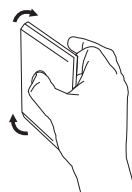
Installation of Labelled Buttons



1. Remove encapsulated button with narrow object ie. pen.



2. Replace button with a label button cap.



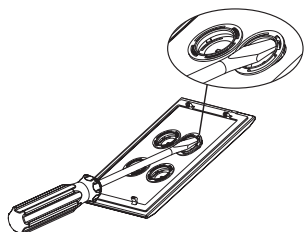
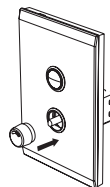
3. Vertical and horizontal orientation.

The Clipsal Saturn Series features encapsulated buttons (selected models). Button orientation can be changed to suit horizontal or vertical mounting. Simply clasp the button, front and back, and rotate it into the appropriate locking position. Interchangeable labelled ID button faces are also available (sold separately).

Fitting Dimmer Knob

Simply slide the dimmer knob onto the shaft protruding from the front of the switch fascia.

NOTE: Ensure the dimmer knob is correctly aligned with dimmer shaft.
Fit fascia first **before** fitting knob.



Button Bezels

Position flat blade screwdriver between encapsulated button and lock ring.

Lightly twist screwdriver to release locking ring.

Lift off locking ring.

Remove bezel.

To install, insert bezel into plate, noting notch position/alignment.

Clip locking ring in place.

Schneider Electric (Australia) Pty Ltd

Contact us: clipsal.com/feedback

National Customer Care Enquiries:

Tel 1300 2025 25

Fax 1300 2025 56

clipsal.com

Schneider Electric (Australia) Pty Ltd reserves the right to change specifications, modify designs and discontinue items without incurring obligation and whilst every effort is made to ensure that descriptions, specifications and other information in this catalogue are correct, no warranty is given in respect thereof and the company shall not be liable for any error therein.

© 2011 Schneider Electric. All Rights Reserved.
Trademarks are owned by Schneider Electric Industries SAS or its affiliated companies.