

Turnkey HyperFlex Edge deployments- Simplified!



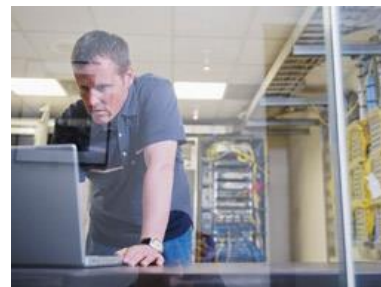
Convenient infrastructure solutions for a variety of HyperFlex edge applications

Enjoy the simplicity, speed, and peace of mind by using just one SKU to order purpose-built and pre-validated solutions for Cisco HyperFlex Edge deployments.

These solutions are designed to support two to four node Cisco *SmartPlay* HyperFlex bundles and allows you to streamline edge rollouts with pre-validated, repeatable, and standardized deployments.

Each solution includes:

- Network management cards for remote access, configuration and control.
- *PowerChute* Network Shutdown v4.4 for graceful, unattended VM and cluster shutdown, start-up.
- *EcoStruxure IT* compatible
- Shock packaging for off-site integration



apc.com/cisco-alliance



Life Is On



HyperFlex Edge Deployments

Complete Edge infrastructure deployment capabilities with one SKU ordering!

APC has partnered with Cisco to offer these validated solutions to reduce engineering and deployment efforts. Choose from three enclosure sizes, in both basic and enhanced configurations that cover a wide variety of remote edge applications.

These solutions are available now. Contact APC or your local representative to learn more.



2 Nodes in 6U

Our award-winning 6U enclosure's low-profile design enables large depth devices to be wall mounted in a compact and less intrusive form factor than traditional wall mount cabinets.

Configuration	APC SKU: APCHX106B Includes: (1) Netshelter WX 6U Enclosure with fan, AR106V (1) Smart-UPS RT 1.5kVA 2U UPS, SRT1500RMXLA (1) Network management card, AP9641 (1) Extended UPS warranty, WBEXTWAR1YR-SP-03	SmartPlay Bundle ²	Reserve Power for switching and other gear ¹			Avail. U Space ³
			E1	E2	E3	
Basic		2 Nodes	833	533	246	2U
Enhanced	APC SKU: APCHX106E Adds: (1) Netbotz Rack Monitor 750, NBRK0750 (1) Netbotz Security Camera Pod 165, NBDP0165 (1) NetBotz Door Switch Sensors, NBES0303	3 Nodes	500	50	---	1U
		4 Nodes	156	---	---	Fully Loaded



3 Nodes in 12U

The SX 12U enclosure is feature-rich and optimized for easy installation, managing cables, integrating power distribution, and maximizing airflow in conditioned environments.

Configuration	APC SKU: APCHX112B Includes: (1) Netshelter SX 12U Enclosure, AR3103SP (1) Smart-UPS RT 2.2kVA 2U UPS, SRT2200RMXLA (1) Network management card, AP9641 (1) Extended UPS warranty, WBEXTWAR1YR-SP-04 (1) Cable Organizer with brush strip 1U, AR8429 (1) 1U Blanking panels (ten pack), AR8136BLK	SmartPlay Bundle ²	Reserve Power for switching and other gear ¹			Avail. U Space
			E1	E2	E3	
Basic		2 Nodes	1313	1013	726	7U (5U)
Enhanced	APC SKU: APCHX112E Adds: (1) Netbotz Access Control, NBACS1356 (1) UPS Extended Run Battery Pack, SRT72RMBP	3 Nodes	980	530	99	6U (4U)
		4 Nodes	646	46	---	5U (3U)



4 Nodes in 18U

The 18U CX is a "server room in a box", with soundproofing and fan kits which allows for IT deployment wherever and whenever it is needed, saving space, cost and deployment time

Configuration	APC SKU: APCHX118B Includes: (1) Netshelter CX 18U Enclosure, AR4018SP (1) Smart-UPS RT 3kVA 2U UPS, SRT3000RMXLA (1) Network management card, AP9641 (1) Extended UPS warranty, WBEXTWAR1YR-SP-05 (1) CX Fan booster kit, AR4703 (1) 1U Blanking panels (ten pack), AR8136BLK	SmartPlay Bundle ²	Reserve Power for switching and other gear ¹			Avail. U Space
			E1	E2	E3	
Basic		2 Nodes	2033	1733	1446	14U (12U)
Enhanced	APC SKU: APCHX118E Adds: (1) Netbotz Access Control, NBACS1356 (1) NetShelter CX HS Handle Adapter Kit, AR4602A (1) UPS Extended Run Battery Pack, SRT96RMBP	3 Nodes	1700	1250	819	13U (11U)
		4 Nodes	1366	766	192	12U (10U)

Customizable solutions are also available via APC's Local Edge Configurator: <https://designportal.apc.com>

Footnotes: ¹ Reserve power calculated using 100% workload factor for each configuration. ² E1 refers to Cisco SmartPlay HXAF-SP-EDGE-M5CE1, E2 refers to HXAF-SP-EDGE-M5CE2 and E3, HXAF-SP-EDGE-M5CE3. ³ Available U space based on inclusion of HyperFlex nodes and APC equipment



Life Is On

