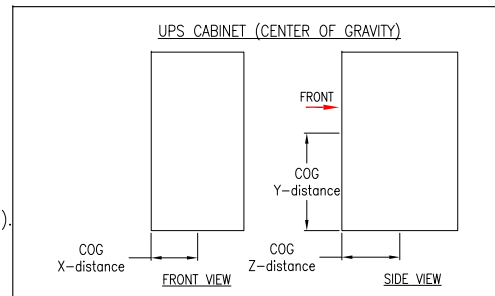



#### NOTES:

1. INSTALLATION SHALL COMPLY WITH ALL APPLICABLE NATIONAL, STATE AND LOCAL CODES.
2. REFER TO PRODUCT DOCUMENTATION FOR ADDITIONAL DETAILS PRIOR TO INSTALLATION AND SITE PREPARATION WORK.
3. ALL DIMENSIONS ARE IN MILLIMETERS.
4. CLEARANCE DIMENSIONS ARE RECOMMENDED FOR AIRFLOW AND SERVICE ACCESS ONLY.
5. ALL DIMENSIONS EXCLUDES SCREW PROJECTIONS OUTSIDE THE ENCLOSURE.
6. CABLE ENTRY IS FROM BOTTOM/REAR OF THE UNIT.  
 FOR ADJACENT BATTERY CABINET CABLE ENTRY IS FROM LEFT. (BATTERY CABINET SHOULD BE MOUNTED LEFT SIDE TO UPS).  
 FOR ADJACENT MAINTENANCE BYPASS IT IS FROM THE RIGHT OF UNIT. (MBP SHOULD BE MOUNTED RIGHT SIDE TO UPS).
7. OPERATING TEMPERATURE: 0°C TO 40°C [32°F TO 104°F].
8. PROTECTION CLASS: IP21. OPTIONAL PROTECTION CLASS IP22 (SKU#GVSOPT026), REFER TO SHEET-2.
9. COLOR: RAL 9003, GLOSS LEVEL 85%.
10. DOOR IS BOTTOM HINGED WITH HOOKS. CAN BE COMPLETELY REMOVABLE.
11. THIS INFORMATION PROVIDES APPROXIMATE CENTER OF GRAVITY CALCULATION.
12. DRILL/PUNCH HOLES IN PLATE. REMOVE PLATE FROM CABINET BEFORE DRILLING/PUNCHING.



<div> CENTER OF GRAVITY AND WEIGHT DATA</div>					
SKU NUMBER	UPS RATING (kW)	WEIGHT OF UNIT-(kg)	CENTER OF GRAVITY DISTANCE (Millimeters)		
			"X"	"Y"	"Z"
GVSUPS50KHS	50	206	260	880	410
GVSUPS60KHS	60	238			
GVSUPS80KHS	80	250			
GVSUPS100KHS	100				
GVSUPS120KHS / GVSUPS120KHINS	120	278			
GVSUPS150KHS / GVSUPS150KHINS	150	290			
GVSUPS50K150HS	50 kW UPS EXPANDABLE TO 60 / 80 / 100 / 120 / 150kW (REFER TO THE RESPECTIVE ABOVE APPLICABLE RATINGS ROW AS PER THE EXPANSION				

THIS DRAWING AND SPECIFICATIONS HEREIN ARE THE PROPERTY OF SCHNEIDER ELECTRIC AND SHALL NOT BE COPIED, REPRODUCED OR USED IN WHOLE OR IN PART, AS THE BASIS FOR THE MANUFACTURE OR SALE OF ITEMS WITHOUT WRITTEN PERMISSION FROM SCHNEIDER ELECTRIC. THIS DRAWING IS BASED UPON LATEST AVAILABLE INFORMATION AND IS SUBJECT TO CHANGE WITHOUT NOTICE.

**Schneider Electric**

TITLE: Galaxy VS  
 UPS 120/150kW& 50kW EXP. TO 150kW  
 Input: 380/400/415V, 3PH, 50Hz, SINGLE/DUAL MAINS  
 Output: 380/400/415V, 3PH, 50Hz  
 GENERAL ARRANGEMENT

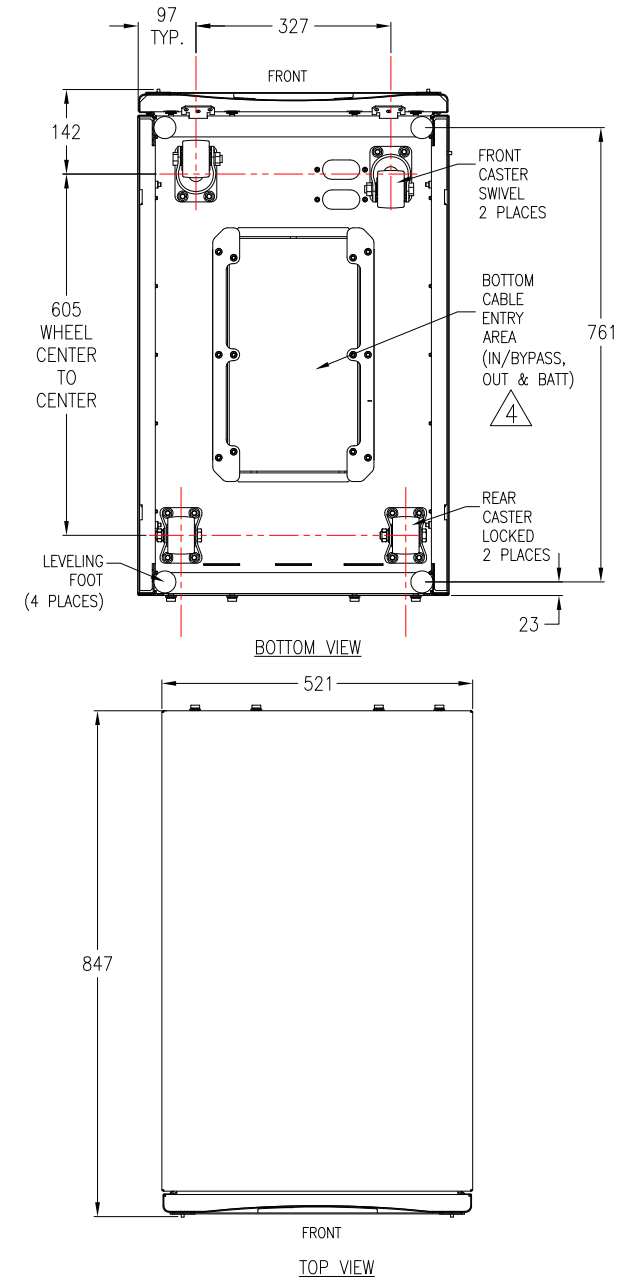
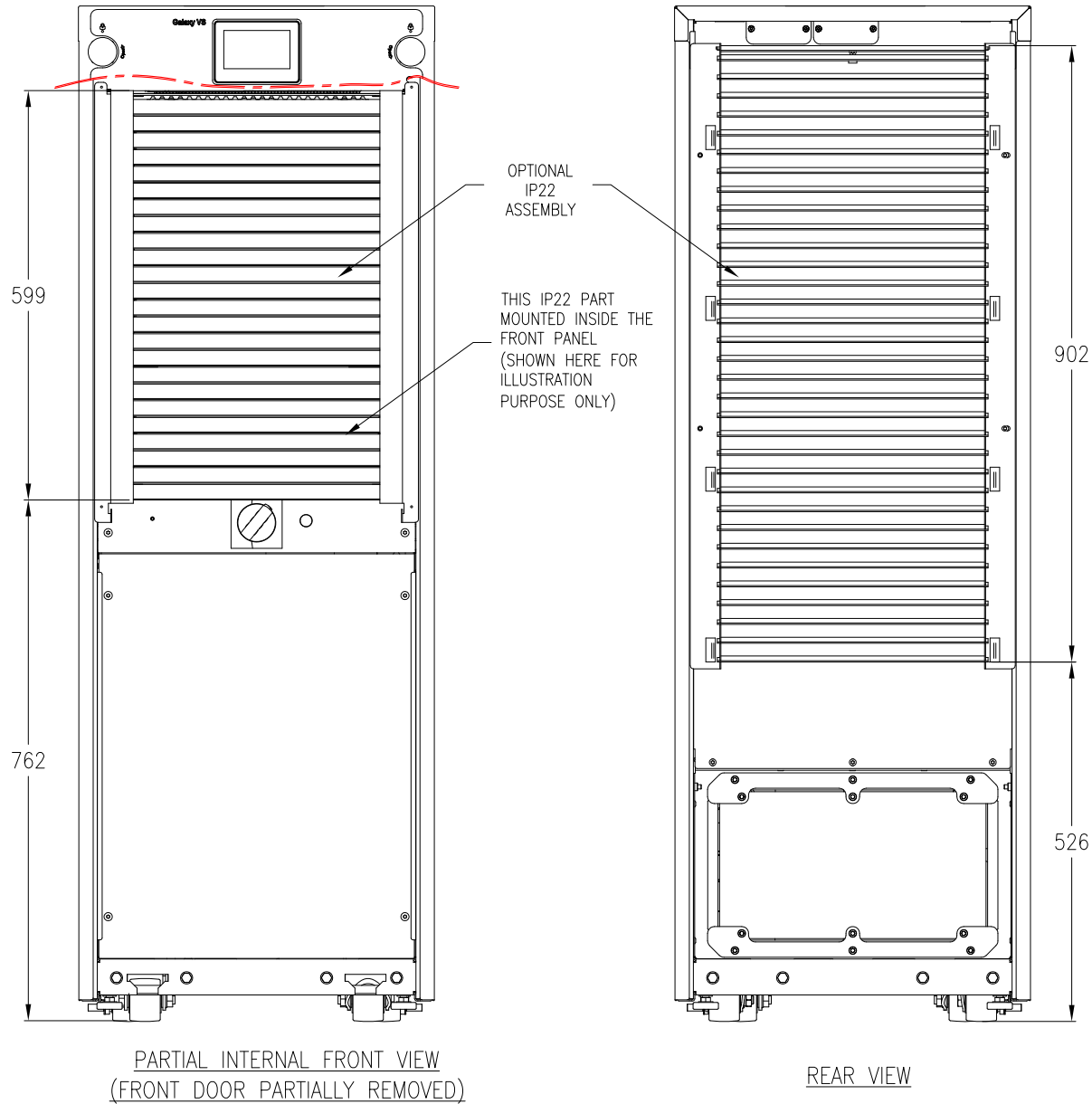
PROJECT: SUBMITTAL DRAWINGS SHEET 1 OF 5

DWG NO: GVSUPS50K150HS  
 DRAWN: BALA  
 ENGINEER: H N / P B  
 APPROVED: H N

9-OCT-20  
 9-OCT-20  
 9-OCT-20

REV: 2  
 FIRST ANGLE PROJECTION

# VIEWS WITH OPTIONAL IP22 (SKU# GVSOPT026)



- NOTES:
1. INSTALLATION SHALL COMPLY WITH ALL APPLICABLE NATIONAL, STATE AND LOCAL CODES.
  2. REFER TO PRODUCT DOCUMENTATION FOR ADDITIONAL DETAILS PRIOR TO INSTALLATION AND SITE PREPARATION WORK.
  3. ALL DIMENSIONS ARE IN MILLIMETERS.
  4. DRILL/PUNCH HOLES IN PLATE. REMOVE PLATE FROM CABINET BEFORE DRILLING/PUNCHING.
  5. SOME STRUCTURAL DETAILS HAVE BEEN OMITTED FOR THE PURPOSE OF CLARITY.

THIS DRAWING AND SPECIFICATIONS HEREIN ARE THE PROPERTY OF SCHNEIDER ELECTRIC AND SHALL NOT BE COPIED, REPRODUCED OR USED IN WHOLE OR IN PART, AS THE BASIS FOR THE MANUFACTURE OR SALE OF ITEMS WITHOUT WRITTEN PERMISSION FROM SCHNEIDER ELECTRIC. THIS DRAWING IS BASED UPON LATEST AVAILABLE INFORMATION AND IS SUBJECT TO CHANGE WITHOUT NOTICE.

**Schneider Electric**

TITLE: Galaxy VS  
UPS 120/150kW & 50kW EXP. TO 150kW  
Input: 380/400/415V, 3PH, 50Hz, SINGLE/DUAL MAINS  
Output: 380/400/415V, 3PH, 50Hz  
TOP VIEW & IP22 DETAILS

DWG NO: GVSUPS50K150HS

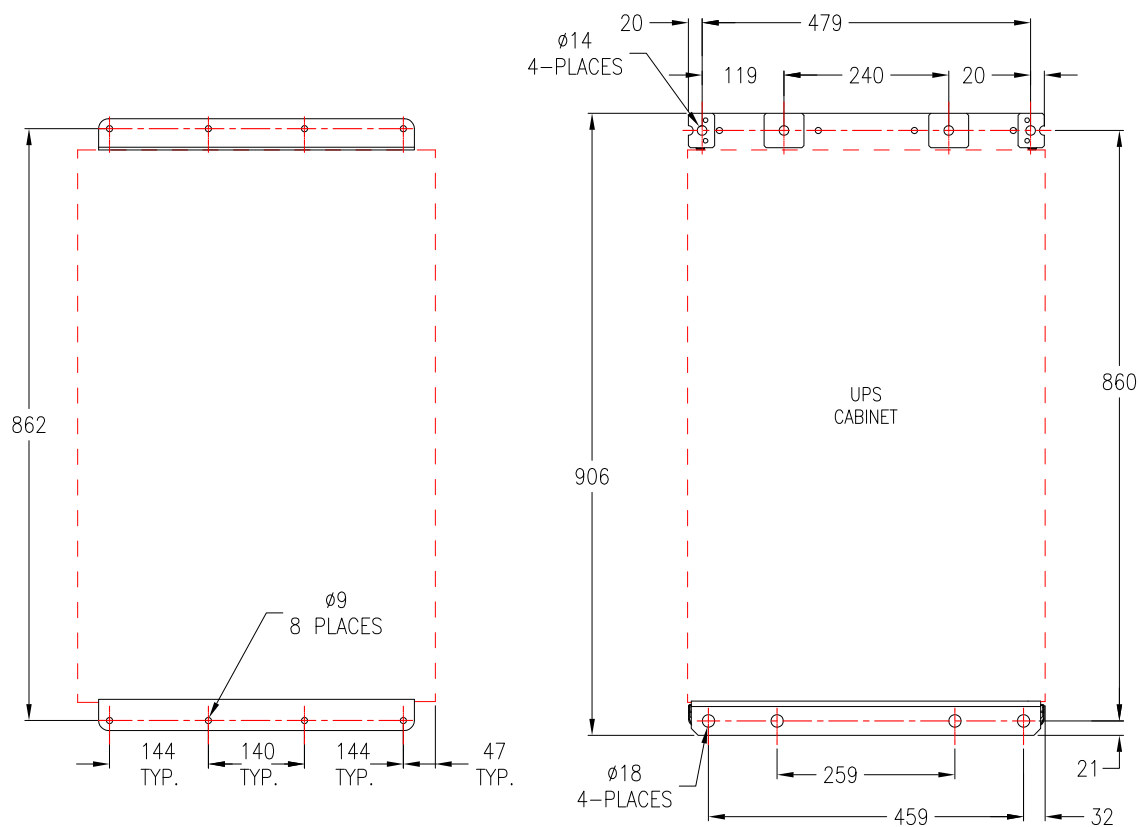
REV. 1

DRAWN: BALA 9-OCT-20  
ENGINEER: H N / P B 9-OCT-20

APPROVED: H N 9-OCT-20

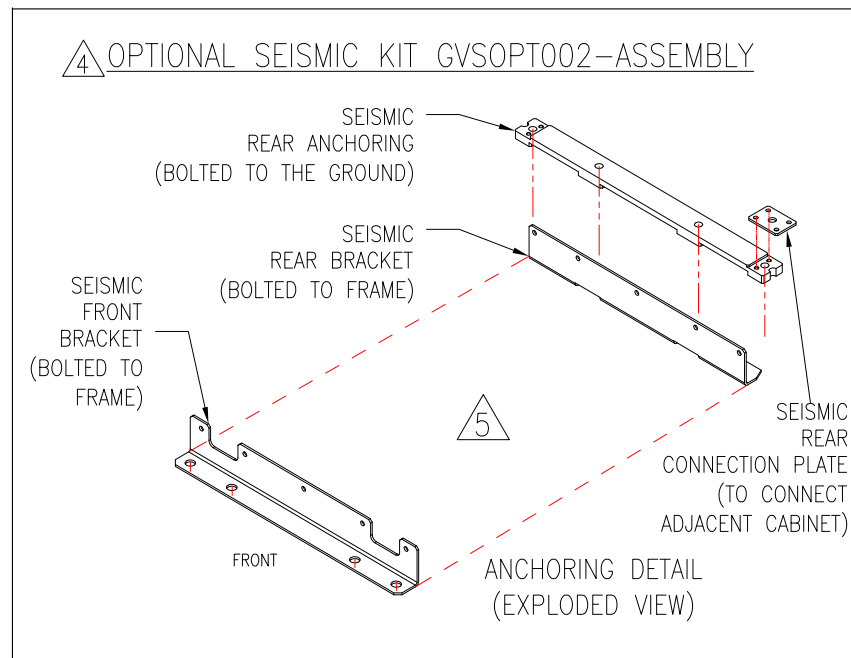
PROJECT: SUBMITTAL DRAWINGS SHEET 2 OF 5

FIRST ANGLE PROJECTION



TRANSPORTATION BRACKET  
ANCHORING DETAILS (BASE TOP VIEW)

4 OPTIONAL SEISMIC KIT (GVSOPT002)  
ANCHORING DETAILS (BASE TOP VIEW)



#### NOTES:

1. INSTALLATION SHALL COMPLY WITH ALL APPLICABLE NATIONAL, STATE AND LOCAL CODES.
2. REFER TO PRODUCT DOCUMENTATION FOR ADDITIONAL DETAILS PRIOR TO INSTALLATION AND SITE PREPARATION WORK.
3. ALL DIMENSIONS ARE IN MILLIMETERS.

△4. SEISMIC LOCATION : OPTIONAL SEISMIC KIT IS REQUIRED (GVSOPT002).

NON-SEISMIC LOCATION: THE FRONT AND REAR TRANSPARATION BRACKET CAN BE USED.

THIS DRAWING AND SPECIFICATIONS HEREIN ARE THE PROPERTY OF SCHNEIDER ELECTRIC AND SHALL NOT BE COPIED, REPRODUCED OR USED IN WHOLE OR IN PART, AS THE BASIS FOR THE MANUFACTURE OR SALE OF ITEMS WITHOUT WRITTEN PERMISSION FROM SCHNEIDER ELECTRIC. THIS DRAWING IS BASED UPON LATEST AVAILABLE INFORMATION AND IS SUBJECT TO CHANGE WITHOUT NOTICE.

**Schneider Electric**

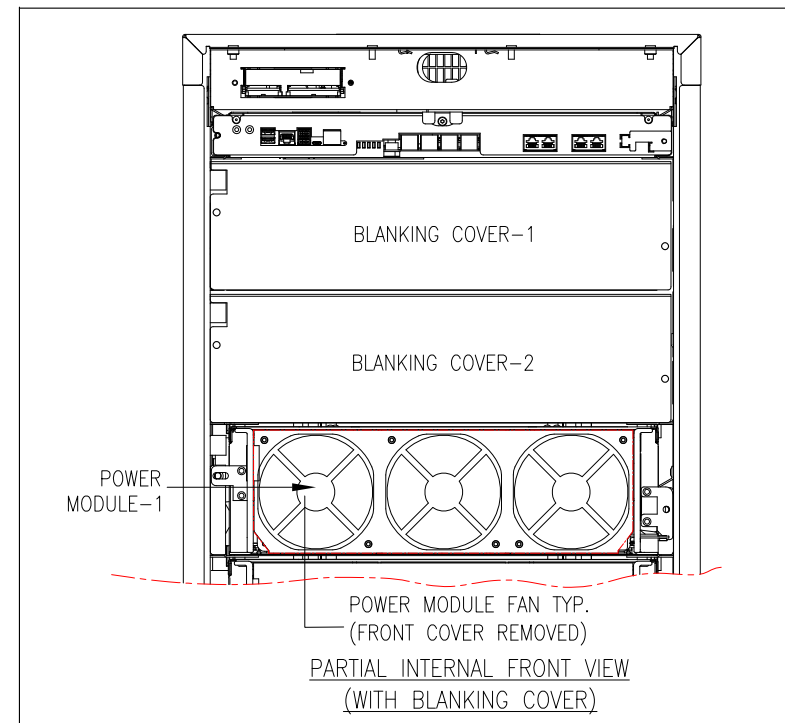
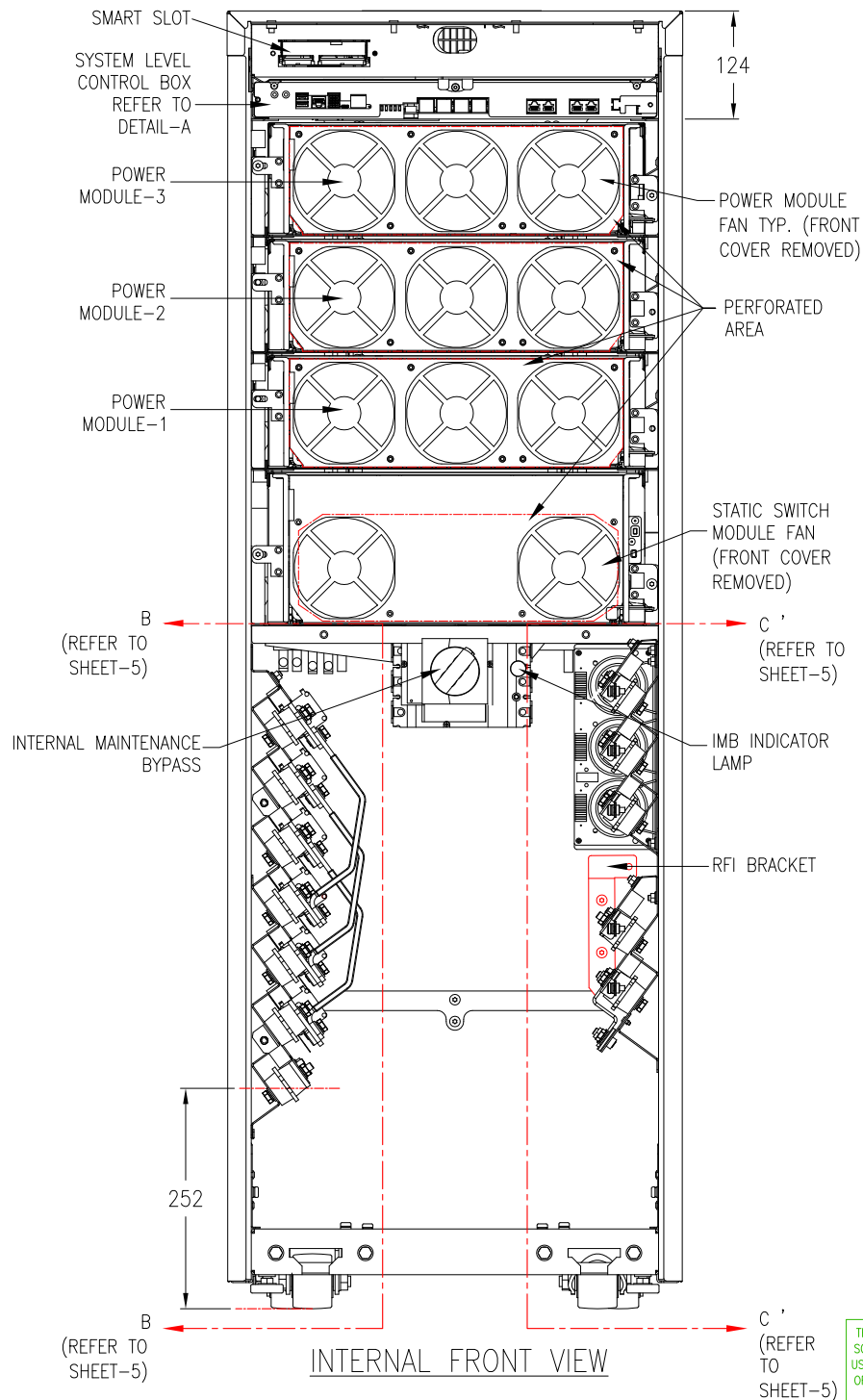
TITLE: Galaxy VS  
UPS 120/150kW& 50kW EXP. TO 150kW  
Input: 380/400/415V, 3PH, 50Hz, SINGLE/DUAL MAINS  
Output: 380/400/415V, 3PH, 50Hz  
ANCHORING DETAILS

PROJECT: SUBMITTAL DRAWINGS SHEET 3 OF 5

DWG NO: GVSUPS50K150HS

DRAWN: BALA	9-OCT-20	FIRST ANGLE
ENGINEER: H N / P B	9-OCT-20	PROJECTION
APPROVED: H N	9-OCT-20	

REV. 1



POWER MODULE AND BLANKING COVER DETAILS			
SKU NUMBER	UPS RATING (kW)	APPLICABLE POWER MODULES	APPLICABLE BLANKING COVERS
GVSUPS50KHS	50	1,2	1, 2
GVSUPS60KHS	60		1
GVSUPS80KHS	80		
GVSUPS100KHS	100		
GVSUPS120KHS / GVSUPS120KHINS	120	1, 2 & 3	0
GVSUPS150KHS / GVSUPS150KHINS	150		
GVSUPS50K150KHS	50kW EXPANDABLE TO 60/80/100/120/150kW (REFER ABOVE RESPECTIVE ROW BASED ON EXPANSION)		

#### NOTES:

1. INSTALLATION SHALL COMPLY WITH ALL APPLICABLE NATIONAL, STATE AND LOCAL CODES.
2. REFER TO PRODUCT DOCUMENTATION FOR ADDITIONAL DETAILS PRIOR TO INSTALLATION AND SITE PREPARATION WORK.
3. ALL DIMENSIONS ARE IN MILLIMETERS.
4. SOME STRUCTURAL DETAILS HAVE BEEN OMITTED FOR THE PURPOSE OF CLARITY.

THIS DRAWING AND SPECIFICATIONS HEREIN ARE THE PROPERTY OF SCHNEIDER ELECTRIC AND SHALL NOT BE COPIED, REPRODUCED OR USED IN WHOLE OR IN PART, AS THE BASIS FOR THE MANUFACTURE OR SALE OF ITEMS WITHOUT WRITTEN PERMISSION FROM SCHNEIDER ELECTRIC. THIS DRAWING IS BASED UPON LATEST AVAILABLE INFORMATION AND IS SUBJECT TO CHANGE WITHOUT NOTICE.

**Schneider Electric**

TITLE: Galaxy VS  
UPS 120/150kW & 50kW EXP. TO 150kW  
Input: 380/400/415V, 3PH, 50Hz, SINGLE/DUAL MAINS  
Output: 380/400/415V, 3PH, 50Hz  
INTERNAL VIEWS

DWG NO: GVSUPS50K150HS

REV. 2

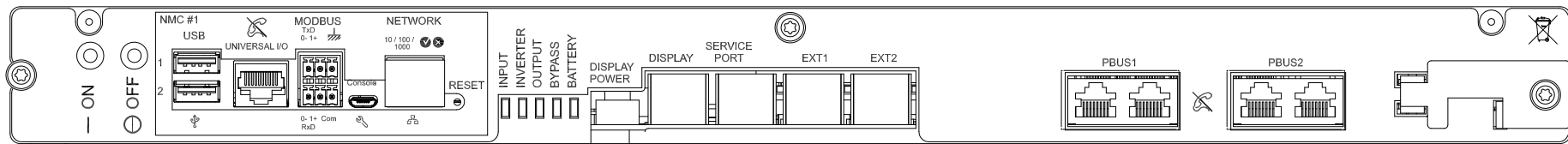
DRAWN: BALA 9-OCT-20

ENGINEER: H N / P B 9-OCT-20

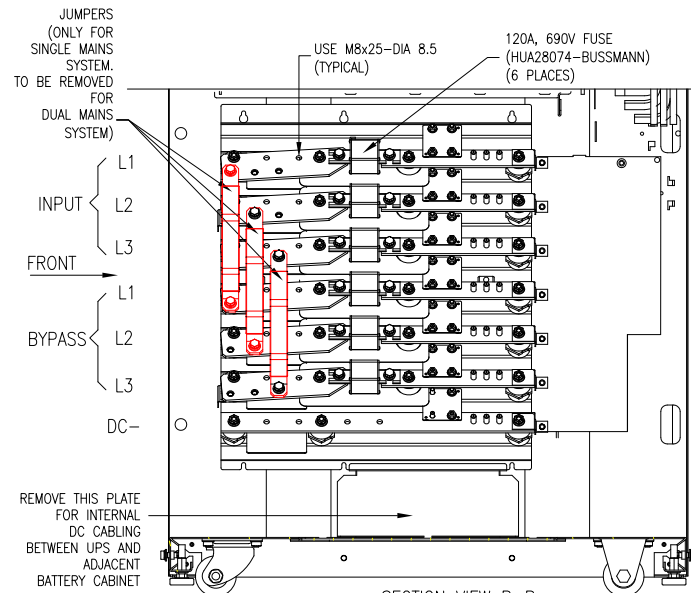
APPROVED: H N 9-OCT-20

PROJECT: SUBMITTAL DRAWINGS SHEET 4 OF 5

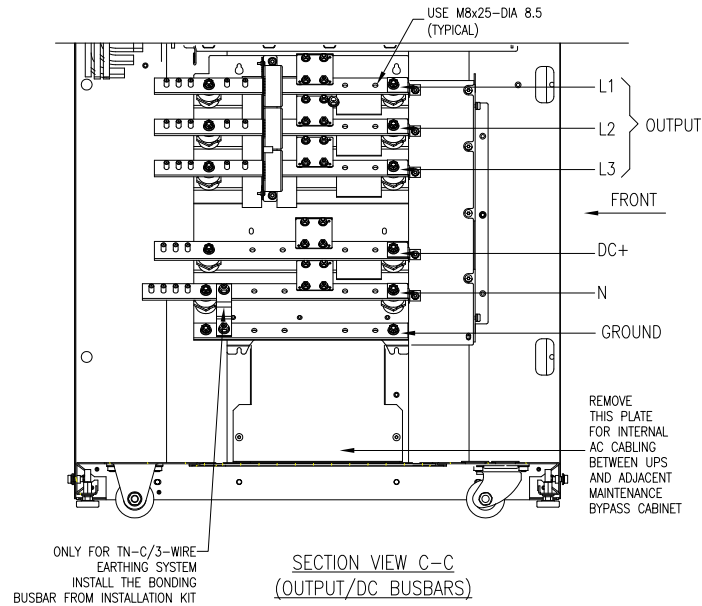
FIRST ANGLE PROJECTION



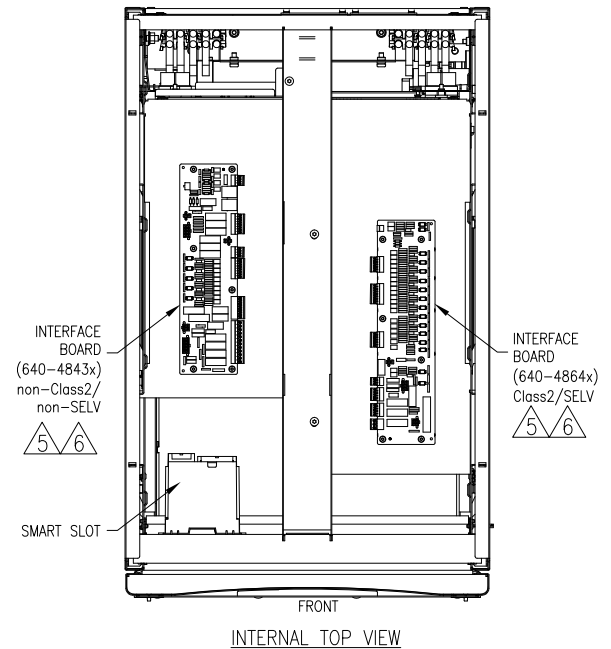
△5 DETAIL-A (SYSTEM LEVEL CONTROL BOX-ENLARGED VIEW)



SECTION VIEW B-B  
(INPUT/BYPASS BUSBARS)



SECTION VIEW C-C  
(OUTPUT/DC BUSBARS)



INTERNAL TOP VIEW

TABLE-1

POWER MODULE AND BLANKING COVER DETAILS			
SKU NUMBER	UPS RATING (kW)	INPUT FUSE DETAILS	BYPASS FUSE DETAILS
GVSUPS50KHS	50	400A, 500V (MAKE & MODEL: MERSEN D30191)	315A, 690V (MAKE & MODEL: MERSEN A330188)
GVSUPS60KHS	60		
GVSUPS80KHS	80		
GVSUPS100KHS	100		
GVSUPS120KHS / GVSUPS120KHINS	120	550A, 660V (MAKE & MODEL: MERSEN PC30UD69V550A)	
GVSUPS150KHS / GVSUPS150KHINS	150		
GVSUPS50K150KHS	50kW EXPANDABLE TO 60/80/100/120/150kW (REFER ABOVE RESPECTIVE ROW BASED ON EXPANSION)		

NOTES:

1. INSTALLATION SHALL COMPLY WITH ALL APPLICABLE NATIONAL, STATE AND LOCAL CODES.
2. REFER TO PRODUCT DOCUMENTATION FOR ADDITIONAL DETAILS PRIOR TO INSTALLATION AND SITE PREPARATION WORK.
3. ALL DIMENSIONS ARE IN MILLIMETERS.
4. SOME STRUCTURAL DETAILS HAVE BEEN OMITTED FOR THE PURPOSE OF CLARITY.
- △5. FOR INTERFACE DETAILS REFER TO SYSTEM WIRING DIAGRAM GVS20K150HS-WD.
- △6. FOR LATEST BOARD PART NUMBER CONTACT SCHNEIDER ELECTRIC.
7. THE SYSTEM IS DESIGNED TO SUPPORT MAXIMUM 150 sqmm CABLES.

THIS DRAWING AND SPECIFICATIONS HEREIN ARE THE PROPERTY OF SCHNEIDER ELECTRIC AND SHALL NOT BE COPIED, REPRODUCED OR USED IN WHOLE OR IN PART, AS THE BASIS FOR THE MANUFACTURE OR SALE OF ITEMS WITHOUT WRITTEN PERMISSION FROM SCHNEIDER ELECTRIC. THIS DRAWING IS BASED UPON LATEST AVAILABLE INFORMATION AND IS SUBJECT TO CHANGE WITHOUT NOTICE.

**Schneider Electric**

TITLE: Galaxy VS  
UPS 120/150kW& 50kW EXP. TO 150kW  
Input: 380/400/415V, 3PH, 50Hz, SINGLE/DUAL MAINS  
Output: 380/400/415V, 3PH, 50Hz  
INTERNAL AND INTERFACE DETAILS

DWG NO: GVSUPS50K150HS REV: 0  
DRAWN: BALA 9-OCT-20 FIRST ANGLE  
ENGINEER: H N / P B 9-OCT-20 PROJECTION  
APPROVED: H N 9-OCT-20

PROJECT: SUBMITTAL DRAWINGS SHEET 5 OF 5