

- NOTES:**
1. INSTALLATION SHALL COMPLY WITH ALL APPLICABLE NATIONAL, STATE AND LOCAL CODES.
 2. REFER TO PRODUCT DOCUMENTATION FOR ADDITIONAL DETAILS PRIOR TO INSTALLATION AND SITE PREPARATION WORK.
 3. ALL DIMENSIONS ARE IN INCHES [MILLIMETERS].
 - Δ4. CLEARANCE DIMENSIONS ARE REQUIRED FOR AIRFLOW AND SERVICE ACCESS ONLY.
 5. ALL DIMENSIONS EXCLUDES SCREW PROJECTIONS OUTSIDE THE ENCLOSURE.
 - Δ6. REFER TO SHEET-2 FOR UNIT WEIGHT AND CENTER OF GRAVITY DETAILS OF VARIOUS SKUs.
 7. CABLE ENTRY IS FROM BOTTOM/REAR OF THE UNIT.
FOR ADJACENT BATTERY CABINET CABLE ENTRY IS FROM LEFT. (BATTERY CABINET SHOULD BE MOUNTED LEFT SIDE TO UPS).
FOR ADJACENT MAINTENANCE BYPASS IT IS FROM THE RIGHT OF UNIT. (MBP SHOULD BE MOUNTED RIGHT SIDE TO UPS).
 8. OPERATING TEMPERATURE: 32°F TO 104°F [0°C TO 40°C].
 9. PROTECTION CLASS: IP21. OPTIONAL PROTECTION CLASS IP22 (SKU#GVSOPT026), REFER TO SHEET-3.
 10. COLOR: RAL 9003, GLOSS LEVEL 85%.
 11. DOOR IS BOTTOM HINGED WITH HOOKS.
CAN BE COMPLETELY REMOVABLE.
 - Δ12. DRILL/PUNCH HOLES IN PLATE. REMOVE PLATE FROM CABINET BEFORE DRILLING/PUNCHING.

CONTENTS IN THIS DRAWING ARE ALSO VALID FOR CORRESPONDING "TAA" SKUs ENDING WITH "US".
EXAMPLE : CONTENTS APPLICABLE FOR "GVSUPS20KGS" ARE VALID FOR "TAA" SKU "GVSUPS20KGSUS" ALSO.

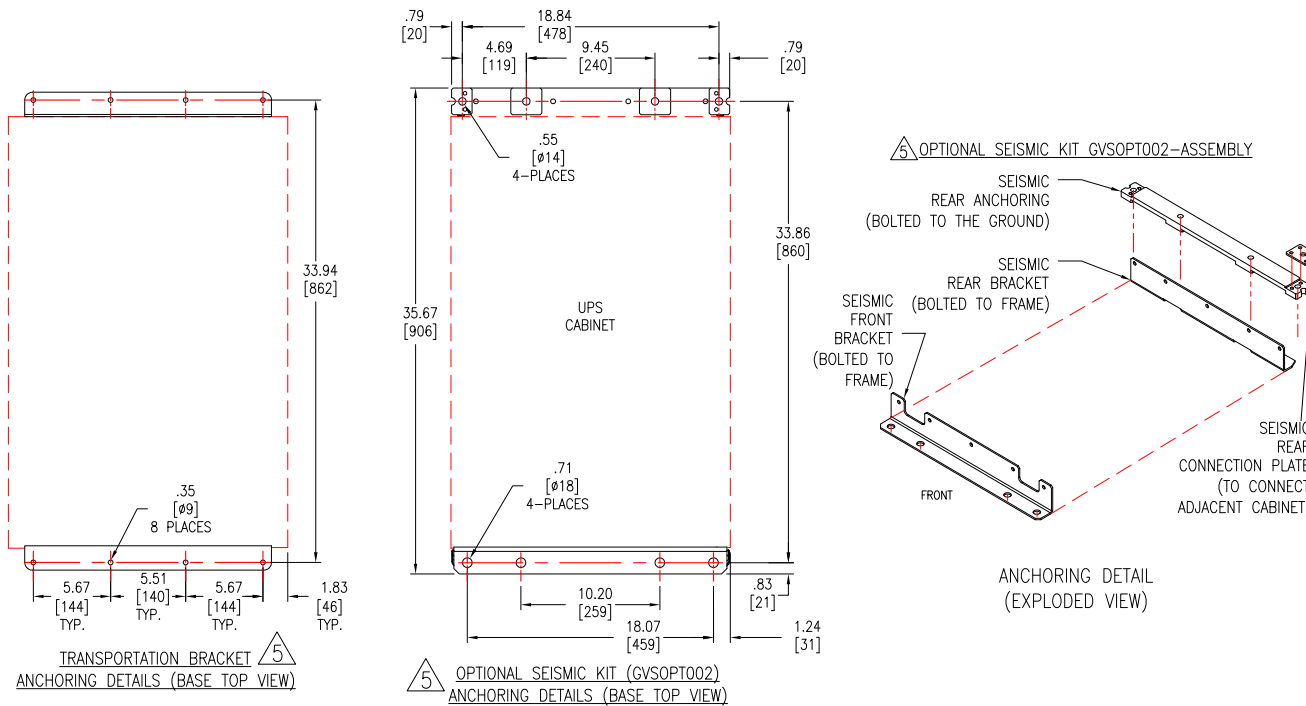
THIS DRAWING AND SPECIFICATIONS HEREIN ARE THE PROPERTY OF SCHNEIDER ELECTRIC AND SHALL NOT BE COPIED, REPRODUCED OR USED IN WHOLE OR IN PART, AS THE BASIS FOR THE MANUFACTURE OR SALE OF ITEMS WITHOUT WRITTEN PERMISSION FROM SCHNEIDER ELECTRIC. THIS DRAWING IS BASED UPON LATEST AVAILABLE INFORMATION AND IS SUBJECT TO CHANGE WITHOUT NOTICE.

Schneider Electric

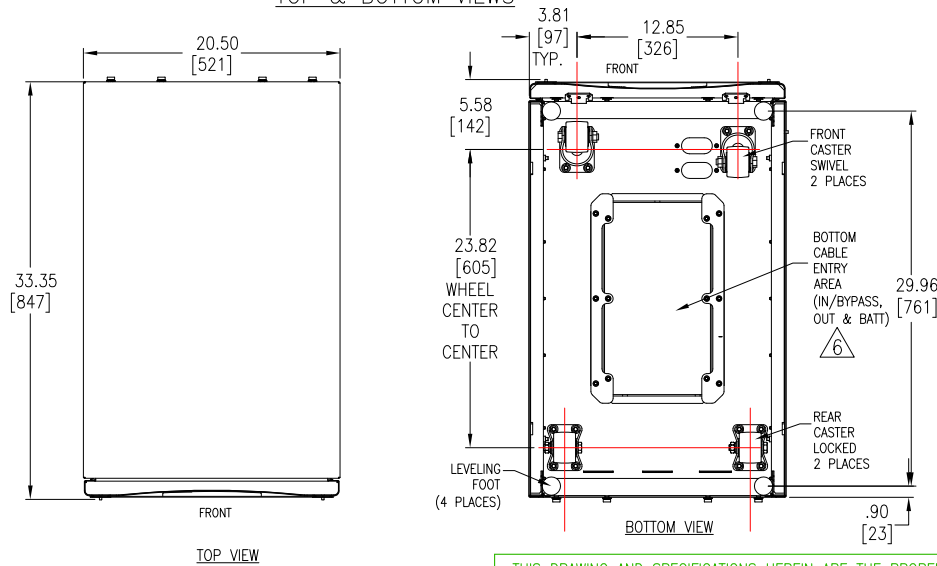
TITLE: Galaxy VS
UPS 10-75kW@208V / 20-150kW@480V
Input/Output: 208V-3PH-60Hz/208V-3PH-60Hz/
Input/Output: 480V-3PH-60Hz/480V-3PH-60Hz
GENERAL ARRANGEMENT
PROJECT: SUBMITTAL DRAWINGS **SHEET** 1 OF 5

DWG NO: GVSUPS10K75F20K150GS **REV.** 1
DRAWN BY: BALA 04-NOV-20 **THIRD**
ENGINEER: C N / R I 04-NOV-20 **ANGLE**
APPROVED BY: H N / J L 04-NOV-20 **PROJECTION**

ANCHORING DETAILS



TOP & BOTTOM VIEWS



CENTER OF GRAVITY AND WEIGHT DATA

SKU NUMBER	UPS OPERATING VOLTAGE	UPS RATING (kW)	WEIGHT OF UNIT– lbs [kg]	CENTER OF GRAVITY DISTANCE Inches [Millimeters]		
				"X"	"Y"	"Z"
GVSUPS20KGS	480V	20	454 [206]	10.24 [260]	34.6 [880]	16.1 [410]
GVSUPS30KGS		30				
GVSUPS40KGS		40				
GVSUPS50KGS		50				
GVSUPS60KGS		60	525 [238]			
GVSUPS80KGS		80	551 [250]			
GVSUPS100KGS		100				
GVSUPS120KGS		120	613 [278]			
GVSUPS150KGS		150	639 [290]			
GVSUPS50K150GS		50 kW UPS EXPANDABLE TO 60 / 80 / 100 / 120 / 150kW (REFER TO THE RESPECTIVE ABOVE APPLICABLE RATINGS ROW AS PER THE EXPANSION)				
GVSUPS10KFS	208V	10	454 [206]	10.24 [260]	34.6 [880]	16.1 [410]
GVSUPS15KFS		15				
GVSUPS20KFS		20				
GVSUPS25KFS		25				
GVSUPS30KFS		30	525 [238]			
GVSUPS40KFS		40	551 [250]			
GVSUPS50KFS		50				
GVSUPS60KFS		60	613 [278]			
GVSUPS75KFS		75	639 [290]			
GVSUPS25K75FS		25 kW UPS EXPANDABLE TO 30 / 40 / 50 / 60 / 75kW (REFER TO THE RESPECTIVE ABOVE APPLICABLE RATINGS ROW AS PER THE EXPANSION)				

NOTES:

1. INSTALLATION SHALL COMPLY WITH ALL APPLICABLE NATIONAL, STATE AND LOCAL CODES.
2. REFER TO PRODUCT DOCUMENTATION FOR ADDITIONAL DETAILS PRIOR TO INSTALLATION AND SITE PREPARATION WORK.
3. ALL DIMENSIONS ARE IN INCHES [MILLIMETERS].
- △ 4. THIS INFORMATION PROVIDES APPROXIMATE CENTER OF GRAVITY CALCULATION. (CALCULATED BASED ON MAXIMUM WEIGHT).
- △ 5. SEISMIC LOCATION: OPTIONAL SEISMIC KIT IS REQUIRED (GVSOPT002). NON-SEISMIC LOCATION: THE FRONT AND REAR TRANSPORTATION BRACKET CAN BE USED.
- △ 6. DRILL/PUNCH HOLES IN PLATE. REMOVE PLATE FROM CABINET BEFORE DRILLING/PUNCHING.

THIS DRAWING AND SPECIFICATIONS HEREIN ARE THE PROPERTY OF SCHNEIDER ELECTRIC AND SHALL NOT BE COPIED, REPRODUCED OR USED IN WHOLE OR IN PART, AS THE BASIS FOR THE MANUFACTURE OR SALE OF ITEMS WITHOUT WRITTEN PERMISSION FROM SCHNEIDER ELECTRIC. THIS DRAWING IS BASED UPON LATEST AVAILABLE INFORMATION AND IS SUBJECT TO CHANGE WITHOUT NOTICE.

Schneider Electric

TITLE: Galaxy VS
UPS 10-75kW@208V / 20-150kW@480V
Input/Output: 208V-3PH-60Hz/208V-3PH-60Hz/
Input/Output: 480V-3PH-60Hz/480V-3PH-60Hz
TOP-BOTTOM & ANCHORING

PROJECT: SUBMITTAL DRAWINGS **SHEET** 2 OF 5

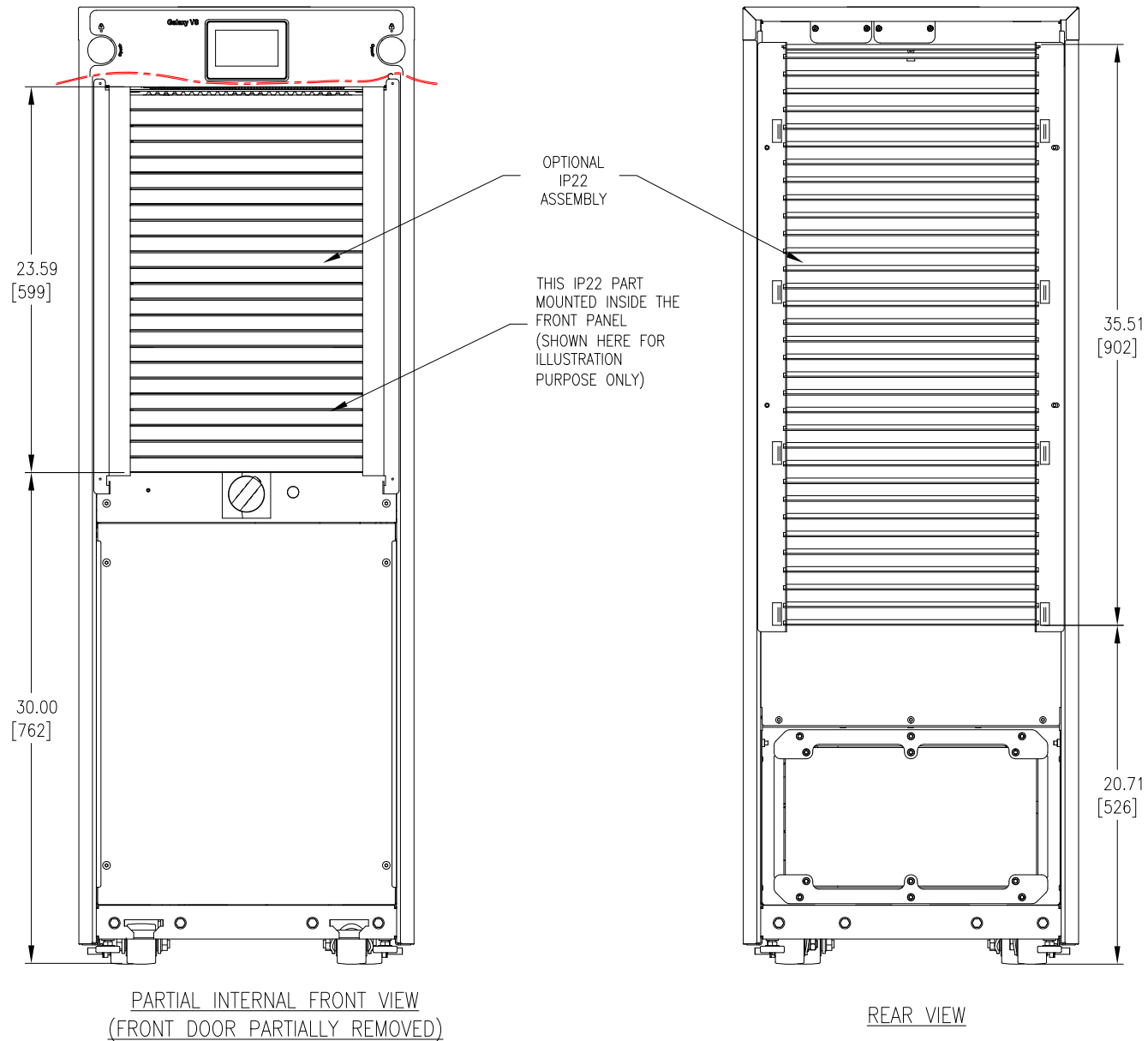
DWG NO: GVSUPS10K75F20K150GS **REV.** 1

DRAWN BY: BALA **9-OCT-20** **THIRD**

ENGINEER: C N / R I **9-OCT-20** **ANGLE**

APPROVED BY: H N / J L **9-OCT-20** **PROJECTION**

VIEWS WITH OPTIONAL IP22 (SKU# GVSOPT026)



NOTES:

1. INSTALLATION SHALL COMPLY WITH ALL APPLICABLE NATIONAL, STATE AND LOCAL CODES.
2. REFER TO PRODUCT DOCUMENTATION FOR ADDITIONAL DETAILS PRIOR TO INSTALLATION AND SITE PREPARATION WORK.
3. ALL DIMENSIONS ARE IN INCHES [MILLIMETERS].
4. SOME STRUCTURAL DETAILS HAVE BEEN OMITTED FOR THE PURPOSE OF CLARITY.

THIS DRAWING AND SPECIFICATIONS HEREIN ARE THE PROPERTY OF SCHNEIDER ELECTRIC AND SHALL NOT BE COPIED, REPRODUCED OR USED IN WHOLE OR IN PART, AS THE BASIS FOR THE MANUFACTURE OR SALE OF ITEMS WITHOUT WRITTEN PERMISSION FROM SCHNEIDER ELECTRIC. THIS DRAWING IS BASED UPON LATEST AVAILABLE INFORMATION AND IS SUBJECT TO CHANGE WITHOUT NOTICE.

Schneider
Electric

TITLE: Galaxy VS
UPS 10-75kW@208V / 20-150kW@480V
Input/Output: 208V-3PH-60Hz/208V-3PH-60Hz/
Input/Output: 480V-3PH-60Hz/480V-3PH-60Hz
IP22 DETAILS

PROJECT: SUBMITTAL DRAWINGS SHEET 3 OF 5

DWG NO: GVSUPS10K75F20K150GS

DRAWN BY: BALA 9-OCT-20

ENGINEER: C N / R I 9-OCT-20

APPROVED BY: H N / J L 9-OCT-20

REV. 1

THIRD

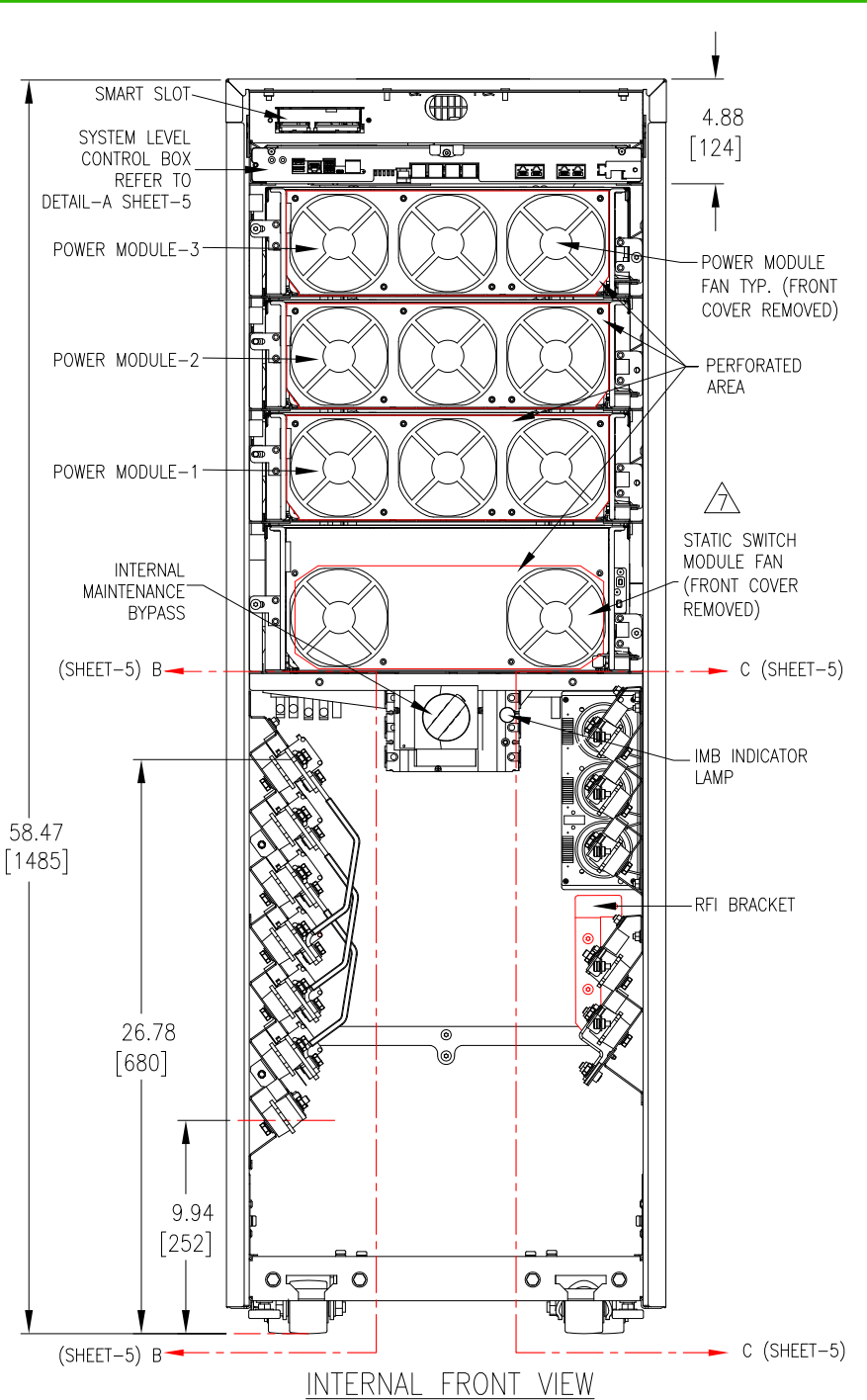
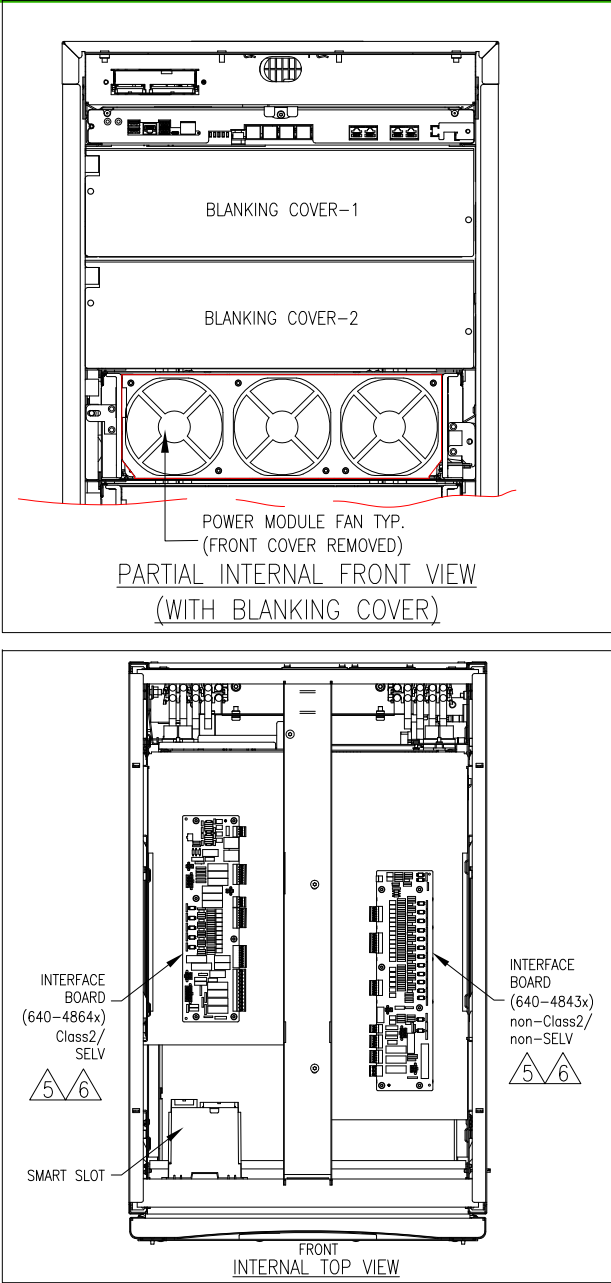
ANGLE

PROJECTION

POWER MODULE AND BLANKING COVER DETAILS				
SKU NUMBER	UPS OPERATING VOLTAGE	UPS RATING (kW)	APPLICABLE POWER MODULES	APPLICABLE BLANKING COVERS
GVSUPS20KGS	480V	20	1	1, 2
GVSUPS30KGS		30		
GVSUPS40KGS		40		
GVSUPS50KGS		50		
GVSUPS60KGS		60	1 & 2	1
GVSUPS80KGS		80		
GVSUPS100KGS		100		
GVSUPS120KGS		120	1, 2 & 3	N A
GVSUPS150KGS		150		
GVSUPS50K150GS			50 kW UPS EXPANDABLE TO 60/ 80/ 100/ 120/ 150kW (REFER TO THE RESPECTIVE ABOVE APPLICABLE RATINGS ROW AS PER THE EXPANSION)	
GVSUPS10KFS	208V	10	1	1, 2
GVSUPS15KFS		15		
GVSUPS20KFS		20		
GVSUPS25KFS		25		
GVSUPS30KFS		30	1 & 2	1
GVSUPS40KFS		40		
GVSUPS50KFS		50		
GVSUPS60KFS		60	1, 2 & 3	N A
GVSUPS75KFS		75		
GVSUPS25K75FS			25 kW UPS EXPANDABLE TO 30 / 40 / 50 / 60 / 75kW (REFER TO THE RESPECTIVE ABOVE APPLICABLE RATINGS ROW AS PER THE EXPANSION)	

- NOTES:
1. INSTALLATION SHALL COMPLY WITH ALL APPLICABLE NATIONAL, STATE AND LOCAL CODES.
 2. REFER TO PRODUCT DOCUMENTATION FOR ADDITIONAL DETAILS PRIOR TO INSTALLATION AND SITE PREPARATION WORK.
 3. ALL DIMENSIONS ARE IN INCHES [MILLIMETERS].
 4. SOME STRUCTURAL DETAILS BEEN OMITTED FOR THE PURPOSE OF CLARITY.
 - △5. FOR INTERFACE DETAILS REFER TO SYSTEM WIRING DIAGRAM GVSUPS25K75F50K150GS-WD.
 - △6. FOR LATEST BOARD PART NUMBER CONTACT SCHNEIDER ELECTRIC.
 - △7. STATIC SWITCH RATING

UPS RATING	APPLICABLE STATIC SWITCH RATING
10-50kW @208V	50kW
60 & 75kW @208V	75kW
20-100kW @480V	100kW
120 & 150kW @480V	150kW

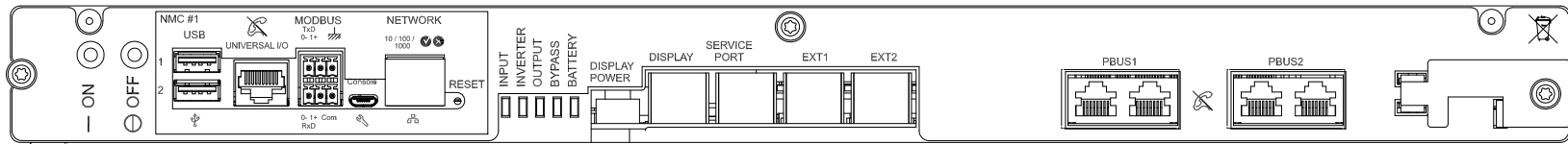


THIS DRAWING AND SPECIFICATIONS HEREIN ARE THE PROPERTY OF SCHNEIDER ELECTRIC AND SHALL NOT BE COPIED, REPRODUCED OR USED IN WHOLE OR IN PART, AS THE BASIS FOR THE MANUFACTURE OR SALE OF ITEMS WITHOUT WRITTEN PERMISSION FROM SCHNEIDER ELECTRIC. THIS DRAWING IS BASED UPON LATEST AVAILABLE INFORMATION AND IS SUBJECT TO CHANGE WITHOUT NOTICE.

Schneider Electric

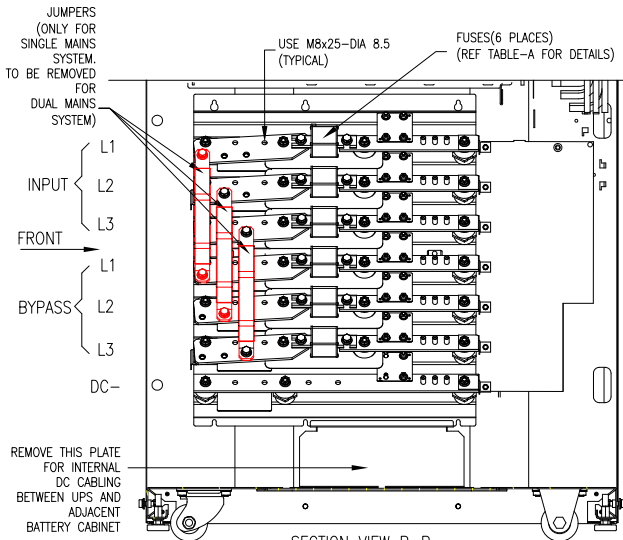
TITLE: Galaxy VS
 UPS 10-75kW@208V / 20-150kW@480V
 Input/Output: 208V-3PH-60Hz/208V-3PH-60Hz/
 Input/Output: 480V-3PH-60Hz/480V-3PH-60Hz/
 ANCHORING DETAILS
 PROJECT: SUBMITTAL DRAWINGS SHEET 4 OF 5

DWG NO: GVSUPS10K75F20K150GS
 DRAWN BY: BALA 3-JUL-20
 ENGINEER: C N / R I 13-AUG-20
 APPROVED BY: H N / J L 13-AUG-20
 REV. 0
 THIRD ANGLE PROJECTION

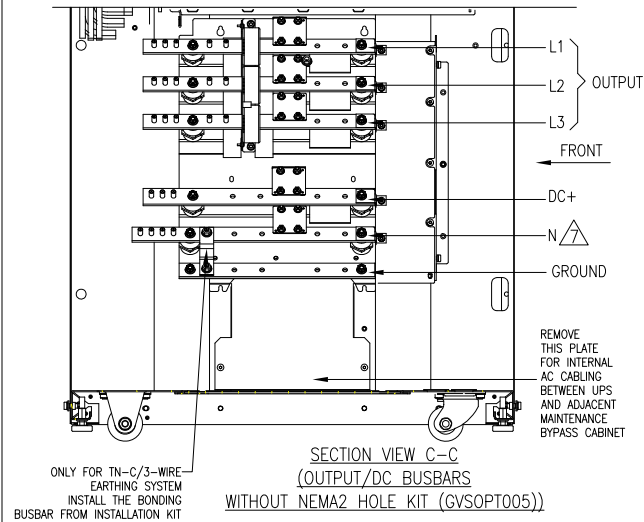


DETAIL-A (SYSTEM LEVEL CONTROL BOX-ENLARGED VIEW)

WITHOUT NEMA2 HOLE KIT OPTION(SKU#GVSOPT005)

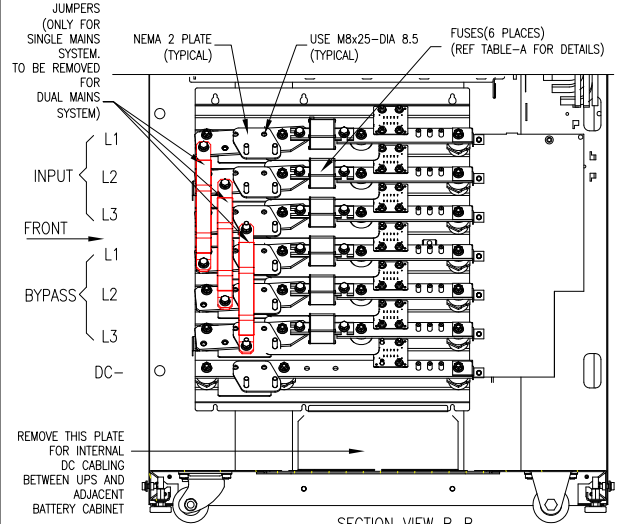


SECTION VIEW B-B
(INPUT/BYPASS BUSBARS WITHOUT NEMA2 HOLE KIT (GVSOPT005))

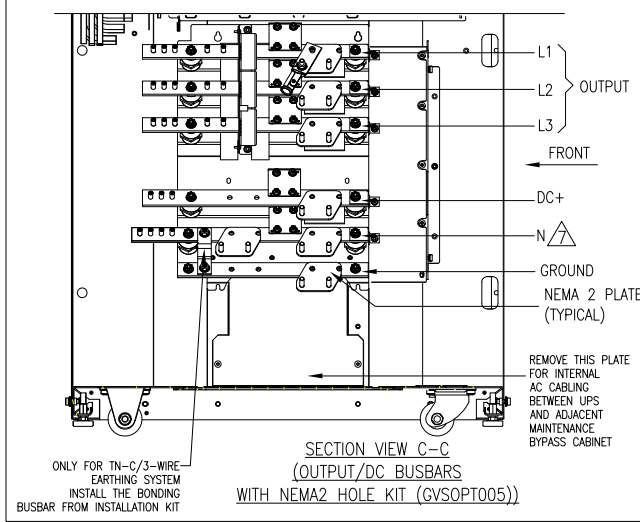


SECTION VIEW C-C
(OUTPUT/DC BUSBARS
WITHOUT NEMA2 HOLE KIT (GVSOPT005))

WITH NEMA2 HOLE KIT OPTION(SKU#GVSOPT005)



SECTION VIEW B-B
(INPUT/BYPASS BUSBARS WITH NEMA2 HOLE KIT (GVSOPT005))



SECTION VIEW C-C
(OUTPUT/DC BUSBARS
WITH NEMA2 HOLE KIT (GVSOPT005))

TABLE-A

INPUT/BYPASS FUSE DETAILS					
SKU NUMBER	UPS OPERATING VOLTAGE	UPS RATING (kw)	INPUT FUSE DETAILS	BYPASS FUSE DETAILS	
GVSUPS20KGS	480V	20	400A, 500V (MAKE & MODEL: MERSEN D30191)	315A, 690V (MAKE & MODEL: MERSEN A330188)	
GVSUPS30KGS		30			
GVSUPS40KGS		40			
GVSUPS50KGS		50			
GVSUPS60KGS		60			
GVSUPS80KGS		80			
GVSUPS100KGS		100			
GVSUPS120KGS		120			550A, 660V (MAKE & MODEL: MERSEN PC30UD69V550A)
GVSUPS150KGS		150			
GVSUPS50K150GS		50KW UPS EXPANDABLE TO 60/80/100/120/150 REFER TO ABOVE APPLICABLE ROW BASED ON EXPANSION			
GVSUPS10KFS	208V	10	400A, 500V (MAKE & MODEL: MERSEN D30191)	315A, 690V (MAKE & MODEL: MERSEN A330188)	
GVSUPS15KFS		15			
GVSUPS20KFS		20			
GVSUPS25KFS		25			
GVSUPS30KFS		30			
GVSUPS40KFS		40			
GVSUPS50KFS		50			
GVSUPS60KFS		60			550A, 660V (MAKE & MODEL: MERSEN PC30UD69V550A)
GVSUPS75KFS		75			
GVSUPS25K75FS		25kw UPS EXPANDABLE TO 30/40/50/60/75 REFER TO ABOVE APPLICABLE ROW BASED ON EXPANSION			

NOTES:

1. INSTALLATION SHALL COMPLY WITH ALL APPLICABLE NATIONAL, STATE AND LOCAL CODES.
2. REFER TO PRODUCT DOCUMENTATION FOR ADDITIONAL DETAILS PRIOR TO INSTALLATION AND SITE PREPARATION WORK.
3. ALL DIMENSIONS ARE IN INCHES [MILLIMETERS].
4. SOME STRUCTURAL DETAILS HAVE BEEN OMITTED FOR THE PURPOSE OF CLARITY.
- Δ5. FOR INTERFACE DETAILS REFER TO SYSTEM WIRING DIAGRAM:- GVSUPS25K75F50K150GS-WD.
6. THE SYSTEM IS DESIGNED TO SUPPORT MAXIMUM 300 kcmil CABLES.
- Δ7. CONNECT THE NEUTRAL CABLES. CONNECT BATTERY MIDPOINT (IF PRESENT IN BATTERY SOLUTION).

THIS DRAWING AND SPECIFICATIONS HEREIN ARE THE PROPERTY OF SCHNEIDER ELECTRIC AND SHALL NOT BE COPIED, REPRODUCED OR USED IN WHOLE OR IN PART, AS THE BASIS FOR THE MANUFACTURE OR SALE OF ITEMS WITHOUT WRITTEN PERMISSION FROM SCHNEIDER ELECTRIC. THIS DRAWING IS BASED UPON LATEST AVAILABLE INFORMATION AND IS SUBJECT TO CHANGE WITHOUT NOTICE.

Schneider Electric

TITLE: Galaxy VS
UPS 10-75kW@208V / 20-150kW@480V
Input/Output: 208V-3PH-60Hz/208V-3PH-60Hz/
Input/Output: 480V-3PH-60Hz/480V-3PH-60Hz
INTERNAL DETAILS
PROJECT: SUBMITTAL DRAWINGS SHEET 5 OF 5

DWG NO: GVSUPS10K75F20K150GS
DRAWN BY: BALA
ENGINEER: C N / R I
APPROVED BY: H N / J L
REV. 1
9-OCT-20
9-OCT-20
9-OCT-20
THIRD
ANGLE
PROJECTION