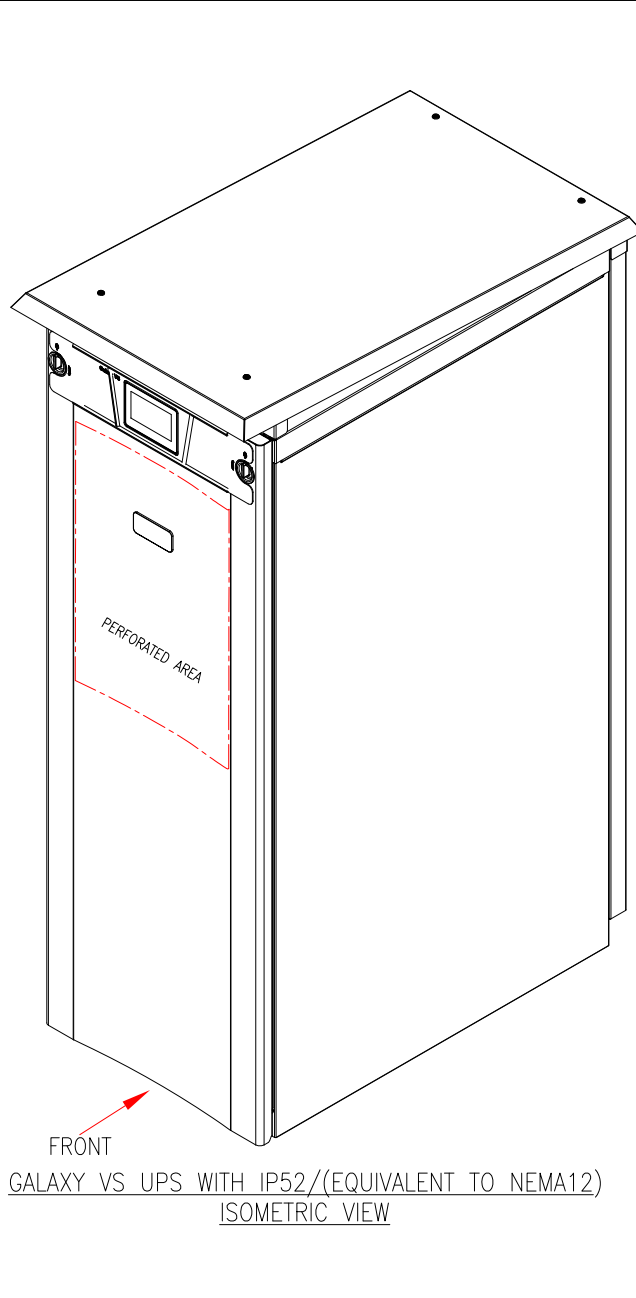


480V / 400V UPS SKUs

GALAXY UPS WITH IP52 (EQUIVALENT TO NEMA12) (SKU#GVSOPT033)

208V UPS SKUs

SKU NUMBER	UPS RATING (kW)			OPERATING TEMPERATURE AND LOAD DERATING
	MAXIMUM CONTINUOUS LOAD			
	@30°C (86°F)	@35°C (95°F)	@40°C (104°F)	
GVSUPS20KGS/ GVSUPS20KRGS GVSUPS20KHS/ GVSUPS20KRHS	20	20	20	0°C TO 40°C (32°F TO 104°F) NO DERATING
GVSUPS30KGS/ GVSUPS30KRGS GVSUPS30KHS/ GVSUPS30KRHS	30	30	30	
GVSUPS40KGS/ GVSUPS40KHS/	40	34	30	0°C TO 30°C (32°F TO 86°F) NO DERATING. 30°C TO 40°C (86°F TO 104°F) REDUCE LOAD WITH 3% FOR EVERY °C
GVSUPS40KRGS/ GVSUPS40KRHS/	40	40	40	0°C TO 40°C (32°F TO 104°F) NO DERATING
GVSUPS50KGS/ GVSUPS50KHS/	50	34	30	40kW MAXIMUM LOAD ON UPS. OUTPUT OVERLOAD ALARM SETTING NEED TO BE ADJUSTED BY SCHNEIDER ELECTRIC SERVICE.
GVSUPS50KRGS/ GVSUPS50KRHS/	50	50	50	0°C TO 40°C (32°F TO 104°F) NO DERATING
GVSUPS60KGS/ GVSUPS60KHS/	60	60	50	0°C TO 35°C (32°F TO 95°F) NO DERATING. 35°C TO 40°C (95°F TO 104°F) REDUCE LOAD WITH 3% FOR EVERY °C
GVSUPS60KRGS/ GVSUPS60KRHS/	60	60	60	0°C TO 40°C (32°F TO 104°F) NO DERATING
GVSUPS80KGS/ GVSUPS80KHS/	80	68	50	0°C TO 30°C (32°F TO 86°F) NO DERATING. 30°C TO 40°C (86°F TO 104°F) REDUCE LOAD WITH 3% FOR EVERY °C
GVSUPS80KRGS/ GVSUPS80KRHS/	80	80	80	0°C TO 40°C (32°F TO 104°F) NO DERATING
GVSUPS100KGS/ GVSUPS100KHS/	100	68	50	80kW MAXIMUM LOAD ON UPS. OUTPUT OVERLOAD ALARM SETTING NEED TO BE ADJUSTED BY SCHNEIDER ELECTRIC SERVICE.
GVSUPS100KRGS/ GVSUPS100KRHS/	100	100	84	0°C TO 35°C (32°F TO 95°F) NO DERATING. 35°C TO 40°C (95°F TO 104°F) REDUCE LOAD WITH 3% FOR EVERY °C
GVSUPS120KGS/ GVSUPS120KHS	120	102	84	0°C TO 30°C (32°F TO 86°F) NO DERATING. 30°C TO 40°C (86°F TO 104°F) REDUCE LOAD WITH 3% FOR EVERY °C
GVSUPS150KGS/ GVSUPS150KHS	150	102	84	120kW MAXIMUM LOAD ON UPS. OUTPUT OVERLOAD ALARM SETTING NEED TO BE ADJUSTED BY SCHNEIDER ELECTRIC SERVICE.
GVSUPS50K150GS/ GVSUPS50K150HS	50 kW UPS EXPANDABLE TO 60 / 80 / 100 / 120 / 150kW REFER TO RESPECTIVE ROW ABOVE BASED ON EXPANSION			



SKU NUMBER	UPS RATING (kW)			OPERATING TEMPERATURE AND LOAD DERATING
	MAXIMUM CONTINUOUS LOAD			
	@30°C (86°F)	@35°C (95°F)	@40°C (104°F)	
GVSUPS10KFS/ GVSUPS10KRFS	10	10	10	0°C TO 40°C (32°F TO 104°F) NO DERATING
GVSUPS15KFS/ GVSUPS15KRFS	15	15	15	
GVSUPS20KFS	20	17	15	0°C TO 30°C (32°F TO 86°F) NO DERATING. 30°C TO 40°C (86°F TO 104°F) REDUCE LOAD WITH 3% FOR EVERY °C
GVSUPS20KRFS	20	20	20	0°C TO 40°C (32°F TO 104°F) NO DERATING
GVSUPS25KFS	25	17	15	20kW MAXIMUM LOAD ON UPS. OUTPUT OVERLOAD ALARM SETTING NEED TO BE ADJUSTED BY SCHNEIDER ELECTRIC SERVICE.
GVSUPS25KRFS	25	25	25	0°C TO 40°C (32°F TO 104°F) NO DERATING
GVSUPS30KFS	30	30	25	0°C TO 35°C (32°F TO 95°F) NO DERATING. 35°C TO 40°C (95°F TO 104°F) REDUCE LOAD WITH 3% FOR EVERY °C
GVSUPS30KRFS	30	30	30	0°C TO 40°C (32°F TO 104°F) NO DERATING
GVSUPS40KFS	40	34	25	0°C TO 30°C (32°F TO 86°F) NO DERATING. 30°C TO 40°C (86°F TO 104°F) REDUCE LOAD WITH 3% FOR EVERY °C
GVSUPS40KRFS	40	40	40	0°C TO 40°C (32°F TO 104°F) NO DERATING
GVSUPS50KFS	50	34	25	40kW MAXIMUM LOAD ON UPS. OUTPUT OVERLOAD ALARM SETTING NEED TO BE ADJUSTED BY SCHNEIDER ELECTRIC SERVICE.
GVSUPS50KRFS	50	50	50	0°C TO 35°C (32°F TO 95°F) NO DERATING. 35°C TO 40°C (95°F TO 104°F) REDUCE LOAD WITH 3% FOR EVERY °C
GVSUPS60KFS	60	51	42	0°C TO 30°C (32°F TO 86°F) NO DERATING. 30°C TO 40°C (86°F TO 104°F) REDUCE LOAD WITH 3% FOR EVERY °C
GVSUPS75KFS	60	51	42	60kW MAXIMUM LOAD ON UPS. OUTPUT OVERLOAD ALARM SETTING NEED TO BE ADJUSTED BY SCHNEIDER ELECTRIC SERVICE.
GVSUPS25K75FS	25 kW UPS EXPANDABLE TO 30 / 40 / 50 / 60 / 75kW REFER TO RESPECTIVE ROW ABOVE BASED ON EXPANSION			

THIS DRAWING CONTAINS THE DETAILS AND ILLUSTRATION OF  
OPTIONAL IP52/(EQUIVALENT TO NEMA12) KIT (GVSOPT033)  
IN GALAXY VS UPS,  
FOR UPS SPECIFICATIONS, INTERNAL DETAILS ETC.,  
REFER TO THE RESPECTIVE UPS MECHANICAL DRAWINGS.

## NOTES:

1. INSTALLATION SHALL COMPLY WITH ALL APPLICABLE NATIONAL, STATE AND LOCAL CODES.
2. REFER TO PRODUCT DOCUMENTATION FOR ADDITIONAL DETAILS PRIOR TO INSTALLATION AND SITE PREPARATION WORK.

THIS DRAWING AND SPECIFICATIONS HEREIN ARE THE PROPERTY OF SCHNEIDER ELECTRIC AND SHALL NOT BE COPIED, REPRODUCED OR USED IN WHOLE OR IN PART, AS THE BASIS FOR THE MANUFACTURE OR SALE OF ITEMS WITHOUT WRITTEN PERMISSION FROM SCHNEIDER ELECTRIC. THIS DRAWING IS BASED UPON LATEST AVAILABLE INFORMATION AND IS SUBJECT TO CHANGE WITHOUT NOTICE.

**Schneider**  
**Electric**

## TITLE:

Galaxy VS  
UPS WITH IP52 (EQUIVALENT TO NEMA12) KIT  
SKU#GVSOPT033  
ISOMETRIC VIEW AND APPLICABLE UPS SKUs

PROJECT: SUBMITTAL DRAWINGS SHEET 1 OF 4

## DWG NO:

GVSOPT033

## REV.

0

## DRAWN BY:

BALA

## ENGINEER:

VINAY

## APPROVED BY:

PRASANNA

## DATE:

28-AUG-20

## DATE:

29-OCT-20

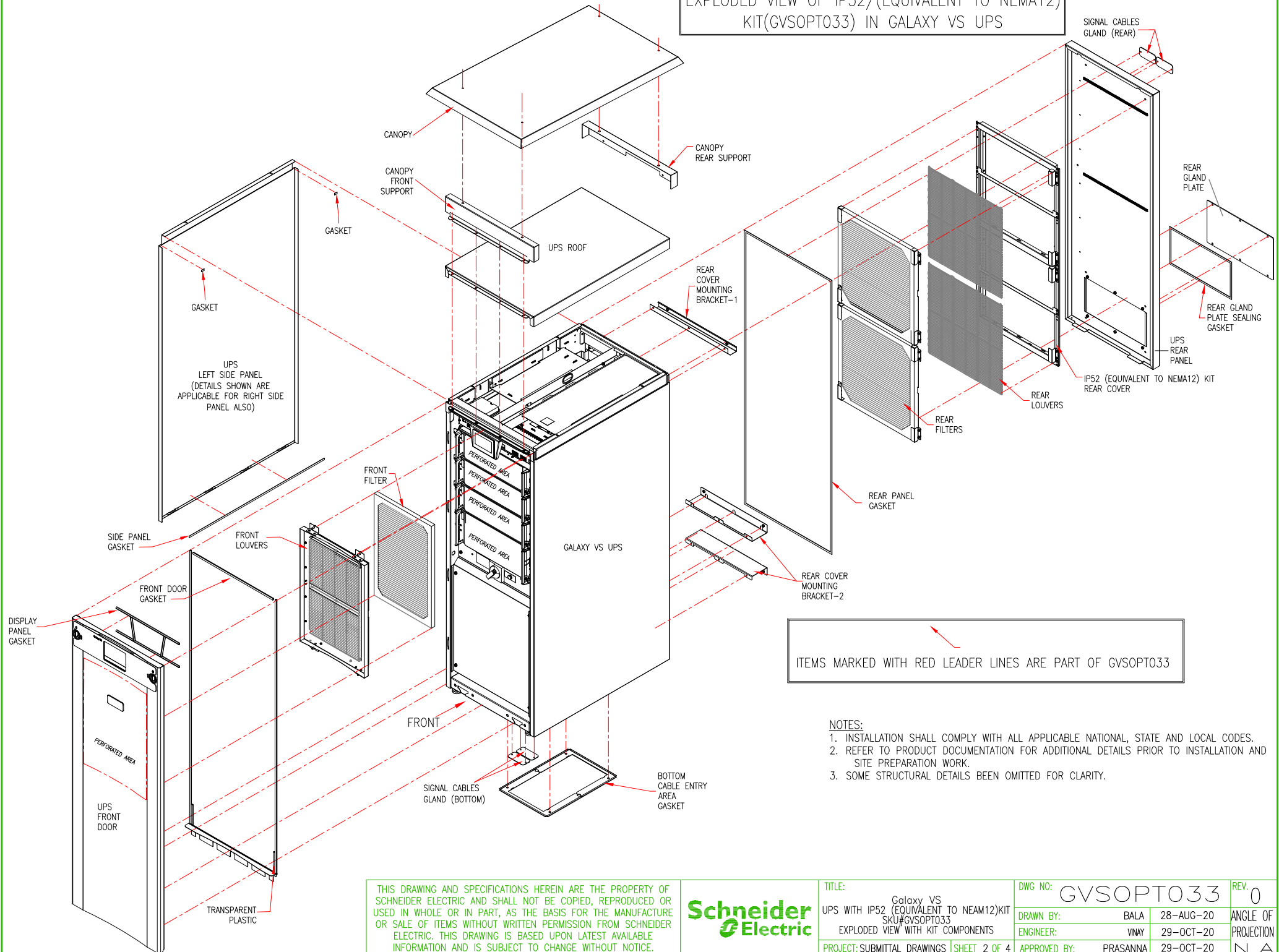
## DATE:

29-OCT-20

## DATE:

N.A

# EXPLODED VIEW OF IP52/(EQUIVALENT TO NEMA12) KIT(GVSOPT033) IN GALAXY VS UPS



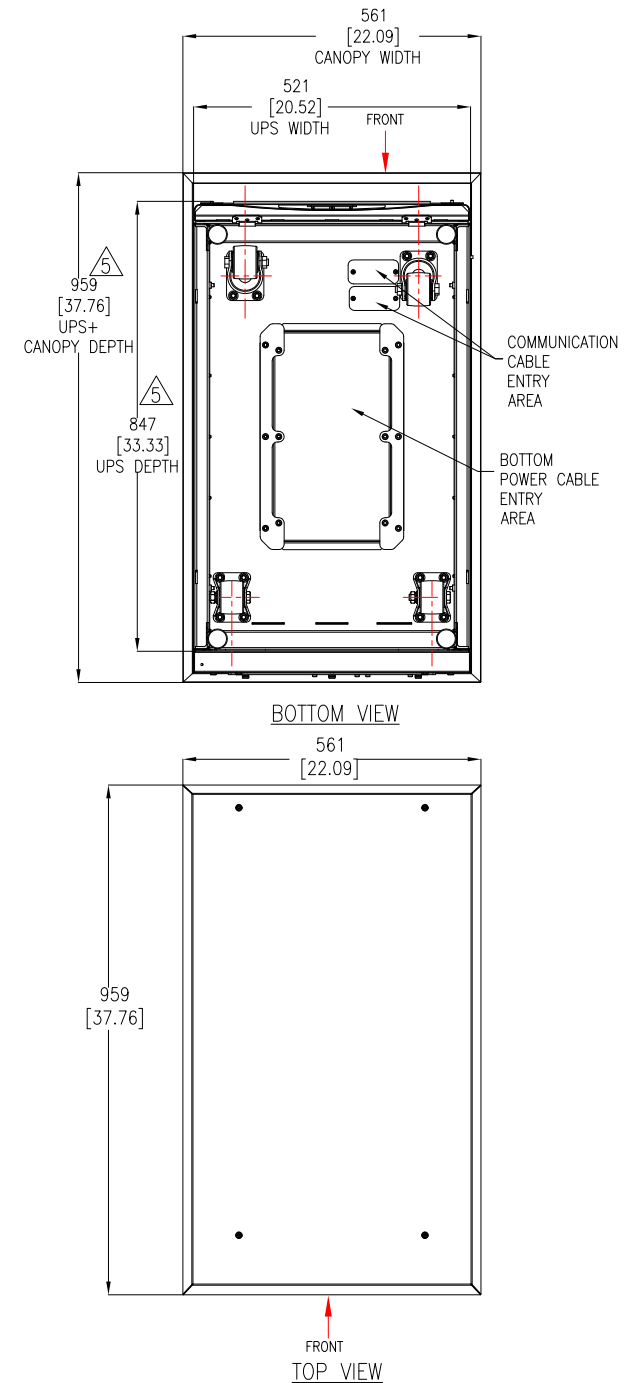
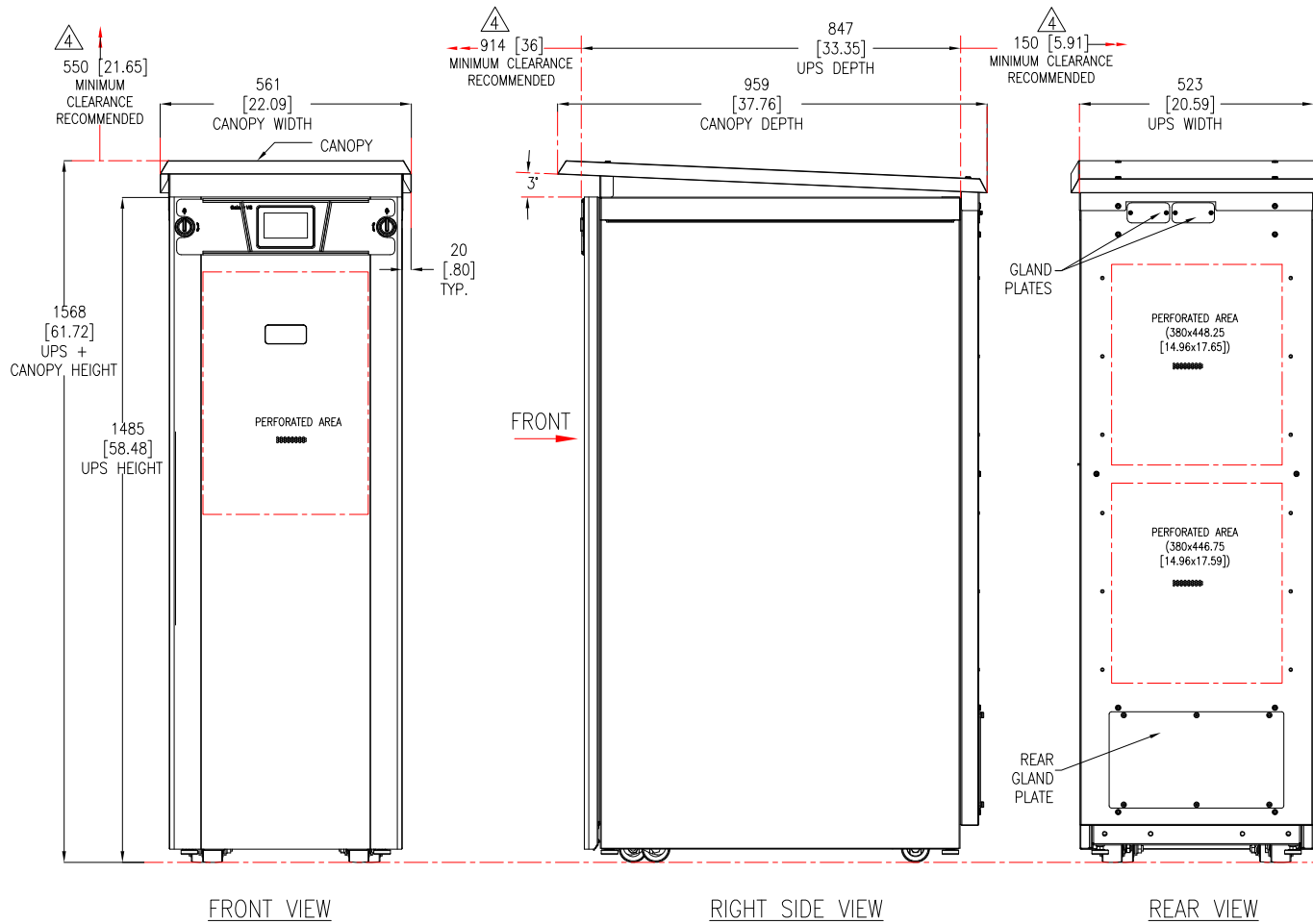
THIS DRAWING AND SPECIFICATIONS HEREIN ARE THE PROPERTY OF SCHNEIDER ELECTRIC AND SHALL NOT BE COPIED, REPRODUCED OR USED IN WHOLE OR IN PART, AS THE BASIS FOR THE MANUFACTURE OR SALE OF ITEMS WITHOUT WRITTEN PERMISSION FROM SCHNEIDER ELECTRIC. THIS DRAWING IS BASED UPON LATEST AVAILABLE INFORMATION AND IS SUBJECT TO CHANGE WITHOUT NOTICE.

**Schneider Electric**

TITLE: Galaxy VS  
UPS WITH IP52 (EQUIVALENT TO NEMA12)KIT  
SKU#GVSOPT033  
EXPLODED VIEW WITH KIT COMPONENTS

DWG NO:	GVSOPT033		REV:	0
DRAWN BY:	BALA	28-AUG-20	ANGLE OF	PROJECTION
ENGINEER:	VINAY	29-OCT-20		
APPROVED BY:	PRASANNA	29-OCT-20		N.A

PROJECT: SUBMITTAL DRAWINGS SHEET 2 OF 4



#### NOTES:

1. INSTALLATION SHALL COMPLY WITH ALL APPLICABLE NATIONAL, STATE AND LOCAL CODES.
2. REFER TO PRODUCT DOCUMENTATION FOR ADDITIONAL DETAILS PRIOR TO INSTALLATION AND SITE PREPARATION WORK.
3. ALL DIMENSIONS ARE IN MILLIMETERS [INCHES].
- △ 4. FRONT, REAR AND TOP ACCESS REQUIRED FOR SERVICE AND AIRFLOW.
- △ 5. DIMENSION EXCLUDES SKIN AND SCREW PROJECTIONS.
6. CABLE ENTRY IS FROM BOTTOM OF THE UNIT.  
FOR ADJACENT MODULAR BATTERY CABINET WITH IP52/(EQUIVALENT TO NEMA12) (GVSMODBC6+GVSOPT034), CABLE ENTRY IS FROM LEFT OF UNIT.  
(IN THAT CASE MODULAR BATTERY CABINET SHOULD BE MOUNTED LEFT SIDE TO UPS).
7. COLOR: RAL 9003 WHITE.
8. PROTECTION CLASS: IP52(EQUIVALENT TO NEMA12).
9. OPERATING TEMPERATURE: 32°F TO 103°F [0°C TO 40°C].  
FOR DETAILS ON DERATING AT VARIOUS TEMP, REFER TO SHEET-1.

THIS DRAWING AND SPECIFICATIONS HEREIN ARE THE PROPERTY OF SCHNEIDER ELECTRIC AND SHALL NOT BE COPIED, REPRODUCED OR USED IN WHOLE OR IN PART, AS THE BASIS FOR THE MANUFACTURE OR SALE OF ITEMS WITHOUT WRITTEN PERMISSION FROM SCHNEIDER ELECTRIC. THIS DRAWING IS BASED UPON LATEST AVAILABLE INFORMATION AND IS SUBJECT TO CHANGE WITHOUT NOTICE.

**Schneider Electric**

#### TITLE:

Galaxy VS  
UPS WITH IP52 (EQUIVALENT TO NEAM12)KIT  
SKU#GVSOPT033  
GENERAL ARRANGEMENT

PROJECT: SUBMITTAL DRAWINGS SHEET 3 OF 4

#### DWG NO:

GVSOPT033

REV. 0

#### DRAWN BY:

BALA

28-AUG-20

#### ENGINEER:

VINAY

29-OCT-20

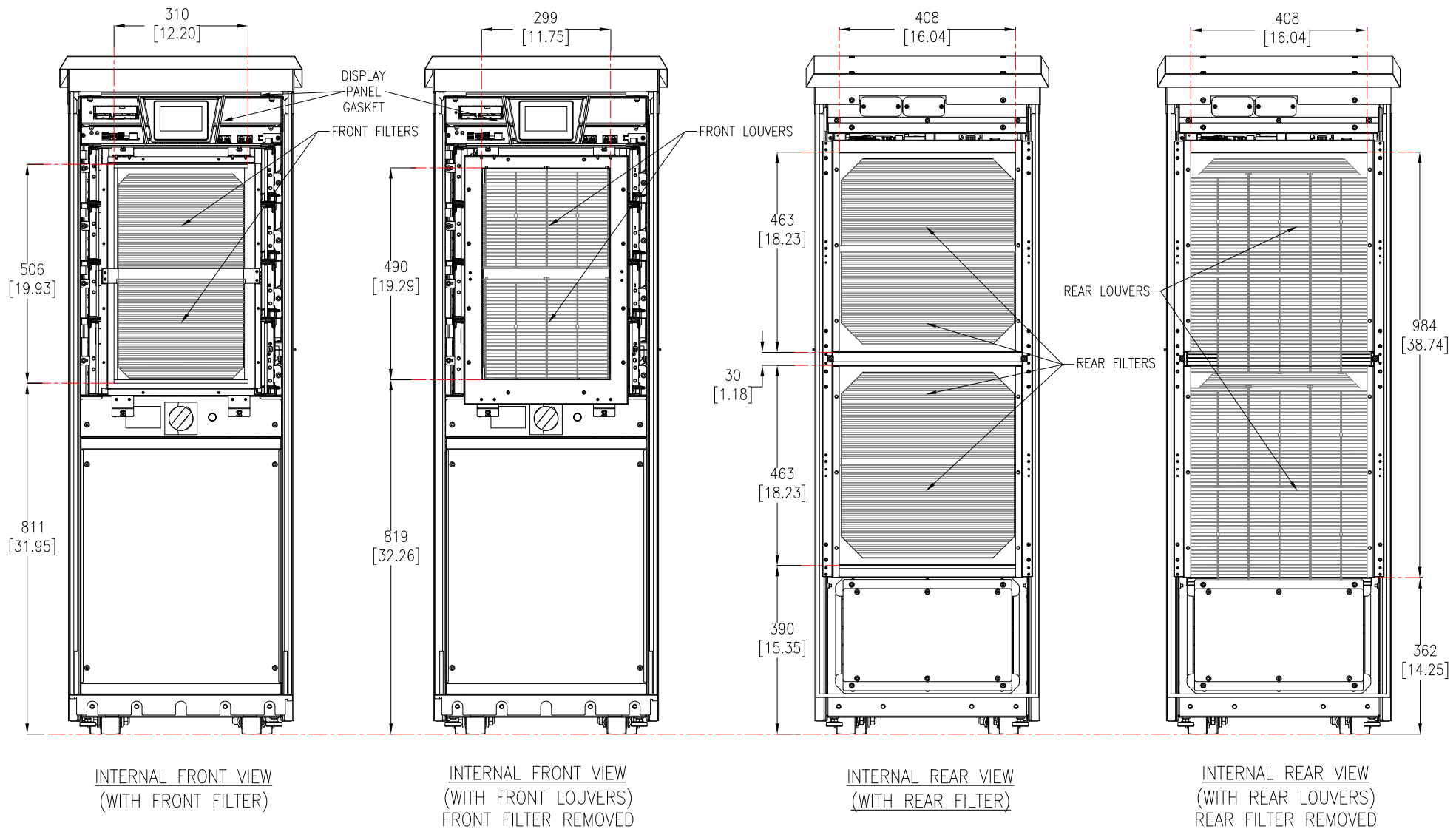
#### APPROVED BY:

PRASANNA

29-OCT-20

ANGLE OF PROJECTION

N.A



#### NOTES:

1. INSTALLATION SHALL COMPLY WITH ALL APPLICABLE NATIONAL, STATE AND LOCAL CODES.
2. REFER TO PRODUCT DOCUMENTATION FOR ADDITIONAL DETAILS PRIOR TO INSTALLATION AND SITE PREPARATION WORK.
3. ALL DIMENSIONS ARE IN MILLIMETERS [INCHES].
4. SOME STRUCTURAL DETAILS BEEN OMITTED FOR CLARITY.

THIS DRAWING AND SPECIFICATIONS HEREIN ARE THE PROPERTY OF SCHNEIDER ELECTRIC AND SHALL NOT BE COPIED, REPRODUCED OR USED IN WHOLE OR IN PART, AS THE BASIS FOR THE MANUFACTURE OR SALE OF ITEMS WITHOUT WRITTEN PERMISSION FROM SCHNEIDER ELECTRIC. THIS DRAWING IS BASED UPON LATEST AVAILABLE INFORMATION AND IS SUBJECT TO CHANGE WITHOUT NOTICE.

**Schneider Electric**

#### TITLE:

Galaxy VS  
 UPS WITH IP52 (EQUIVALENT TO NEAM12)KIT  
 SKU#GVSOPT033  
 TOP/BOTTOM VIEWS & ANCHORING DETAILS

PROJECT: SUBMITTAL DRAWINGS SHEET 4 OF 4

#### DWG NO:

GVSOPT033

#### DRAWN BY:

BALA 28-AUG-20

#### ENGINEER:

VINAY 29-OCT-20

#### APPROVED BY:

PRASANNA 29-OCT-20

#### REV.

0

#### ANGLE OF

PROJECTION

N.A