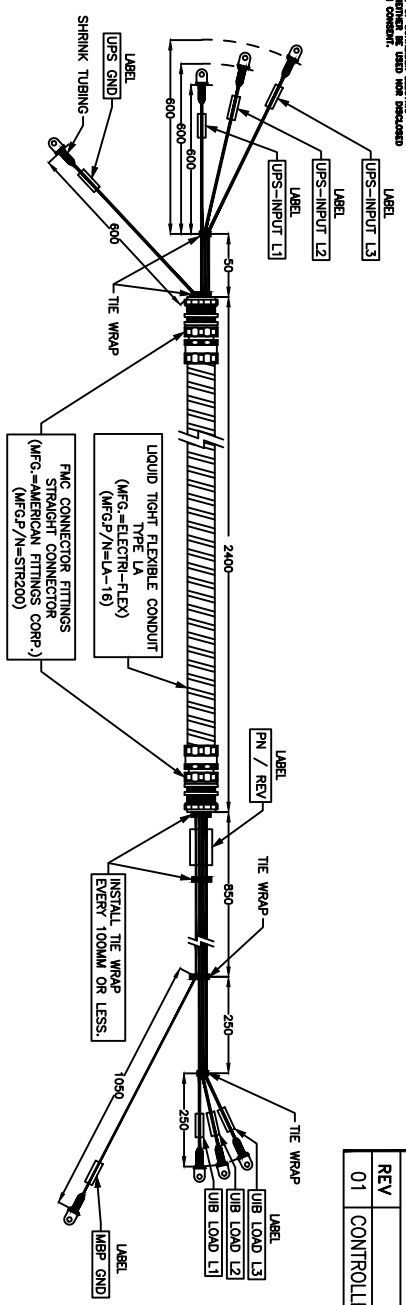


ALL TECHNICAL INFORMATION CONTAINED IN THIS DOCUMENT IS THE EXCLUSIVE PROPERTY OF SCHNEIDER ELECTRIC. THE REUSE OR REPRODUCTION OF ANY INFORMATION CONTAINED HEREIN WITHOUT ITS PRIOR WRITTEN CONSENT, IS PROHIBITED.

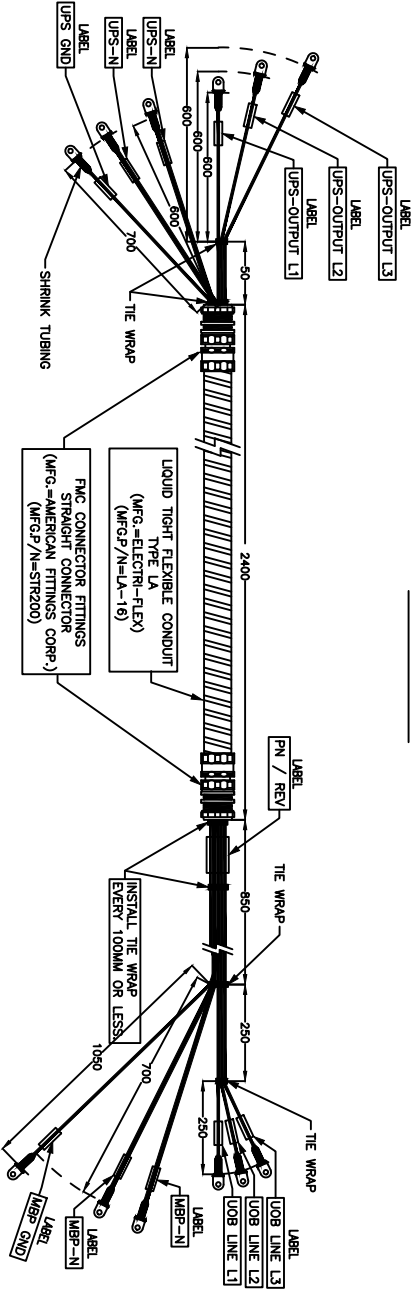
DWG NO. OW13194

SH 1 REV. 01

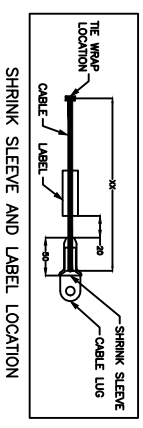
REVISIONS			
REV	DESCRIPTION	DATE	APPROVED
01	CONTROLLED RELEASE	26/11/19	MM



ITEM-1



ITEM-2



<p>Schneider Electric SCHNEIDER ELECTRIC Critical Power & Cooling Services Division 1060 Science Avenue Cary, North Carolina 27513 U.S.A.</p>		<p>UNLESS OTHERWISE SPECIFIED DIMENSIONS ARE IN INCHES AND [MILLIMETERS]. TOLERANCES ARE: INCHES: 1/16, 1/32, 1/64 MILLIMETERS: 0.1, 0.25, 0.5</p>	
<p>CONTRACT NO. _____</p>		<p>DATE: 26/11/19</p>	
<p>APPROVALS</p>		<p>DATE: 26/11/19</p>	
<p>DRAWN: MM</p>		<p>CHECKED: MM</p>	
<p>ISSUED: ST</p>		<p>DATE: 26/11/19</p>	
<p>FINISH: SEE NOTES</p>		<p>SCALE: NONE</p>	
<p>SEE NOTES</p>		<p>DO NOT SCALE DRAWING</p>	
<p>WIRE ASSY INPUT/OUTPUT POWER MBP TO UPS BRAV02</p>			
<p>SIZE: B</p>		<p>DWG NO.: OW13194</p>	
<p>CAGE CODE: 9L985</p>		<p>SHEET: 2 OF 2</p>	
<p>SCALE: NONE</p>		<p>REV. 01</p>	

ALL TERMINAL, UNTERMINATED CONNECTIONS IN THIS DOCUMENT
 SHALL BE THE EXCLUSIVE PROPERTY OF SCHNEIDER ELECTRIC
 MANUFACTURING AND SHALL REMAIN THE PROPERTY OF SCHNEIDER
 ELECTRIC. THIS DRAWING IS NOT TO BE REPRODUCED OR
 TRANSMITTED IN ANY FORM OR BY ANY MEANS, ELECTRONIC OR
 MECHANICAL, INCLUDING PHOTOCOPYING, RECORDING, OR BY ANY
 INFORMATION STORAGE AND RETRIEVAL SYSTEM.


DWG NO. **OW13194**

SH **1** REV. **01**

REVISIONS		
REV	DESCRIPTION	DATE
01	CONTROLLED RELEASE	26/11/19
		MM

Item	Rep	Color	Section	Description	FROM		TO			
					Mfg	Ref P/N	Mfg	Ref P/N		
1	W-1	BLACK	1 AVG	WR 600V 105°C 1 AVG PVC BLK UL 1232 / AWM 1283	PANDUIT	LCA1-14-E	UPS-INPUT L1	PANDUIT	LCA1-14-E	UBB LOAD L1
	W-2	BLACK	1 AVG	WR 600V 105°C 1 AVG PVC BLK UL 1232 / AWM 1283	PANDUIT	LCA1-14-E	UPS-INPUT L2	PANDUIT	LCA1-14-E	UBB LOAD L2
	W-3	BLACK	1 AVG	WR 600V 105°C 1 AVG PVC BLK UL 1232 / AWM 1283	PANDUIT	LCA1-14-E	UPS-INPUT L3	PANDUIT	LCA1-14-E	UBB LOAD L3
	W-4	GRN/YEL	7 AVG	WR 600V 105°C 7 AVG GRN/YEL UL 1232 / AWM 1283	PANDUIT	LCA8-14-L	UPS GND	PANDUIT	LCA8-14-L	MBP GND
	W-5	BLACK	1 AVG	WR 600V 105°C 1 AVG PVC BLK UL 1232 / AWM 1283	PANDUIT	LCA1-14-E	UPS-OUTPUT L1	PANDUIT	LCA1-14-E	UBB LINE L1
	W-6	BLACK	1 AVG	WR 600V 105°C 1 AVG PVC BLK UL 1232 / AWM 1283	PANDUIT	LCA1-14-E	UPS-OUTPUT L2	PANDUIT	LCA1-14-E	UBB LINE L2
	W-7	BLACK	1 AVG	WR 600V 105°C 1 AVG PVC BLK UL 1232 / AWM 1283	PANDUIT	LCA1-14-E	UPS-OUTPUT L3	PANDUIT	LCA1-14-E	UBB LINE L3
	W-8	BLACK	1 AVG	WR 600V 105°C 1 AVG PVC BLK UL 1232 / AWM 1283	PANDUIT	LCA1-14-E	UPS-N	PANDUIT	LCA1-14-E	MBP-N
	W-9	BLACK	1 AVG	WR 600V 105°C 1 AVG PVC BLK UL 1232 / AWM 1283	PANDUIT	LCA1-14-E	UPS-N	PANDUIT	LCA1-14-E	MBP-N
	W-10	GRN/YEL	7 AVG	WR 600V 105°C 7 AVG GRN/YEL UL 1232 / AWM 1283	PANDUIT	LCA8-14-L	UPS GND	PANDUIT	LCA8-14-L	MBP GND

- NOTES:
1. ALL MATERIAL MUST BE ROHS COMPATIBLE AND ALL PARTS SHALL CONTAIN LESS THAN 0.1% REACH SUBSTANCES.
 2. INSTALL CONNECTORS PER MANUFACTURERS SPECIFICATIONS.
 3. ASSEMBLY TO BE CHECKED 100% FOR SHORTS AND OPENS.
 4. MUST HAVE TENSILE STRENGTH TEST WHICH IS PERFORMED IN ACCORDANCE WITH THE INSTRUCTIONS IN STANDARD NF C 20 130.
 5. ASSEMBLY TO BE MARKED "TESTED OK" AFTER BEING TESTED SUCCESSFULLY.
 6. VENDOR MUST BE UL, CSA APPROVED FOR FABRICATION OF THIS CABLE. FLEXIBLE INSULATION CABLE.
 7. ALL PARTS SUBSTITUTIONS TO BE APPROVED BY SCHNEIDER ELECTRIC ENGINEERING PRIOR TO USAGE. QUOTES MUST STATE IF ALTERNATE IS BEING USED AS PART OF THE SUBMITTED QUOTE.
 8. ALL LABELS MUST BE BRADY WML-511-292 OR EQUIVALENT WITH 2MM HIGH CAPITAL LETTERING; LABEL LOCATION: 20MM FROM TERMINAL/SLEEVE END, 15MM FROM LABEL TO LABEL.
 9. SHRINK SLEEVE MUST BE SUMITOMO ELECTRIC SUMITUBE B2 OR EQUIVALENT WITH SUITABLE DIAMETER.
 10. SHRINK SLEEVE SHOULD PROTECT EXPOSED BARE WIRE. LENGTH 50MM.
 11. MATERIAL OF CABLE INSULATION AND SHRINK SLEEVE MUST MEET MINIMUM UL1581 VW-1.
 12. FOR THE TOTAL CABLE LENGTH PLEASE REFER TO THE DIMENSION ON DRAWING.
 13. TOLERANCING STANDARD: 0+0.5 CM IF LENGTH<20 CM; 0+1 CM IF 20 CM<LENGTH<100 CM; 0+2 CM IF 100 CM<LENGTH<200 CM; 0+3 CM IF 200 CM<LENGTH<300 CM; ABOVE 300 CM, 1 CM EXTRA PERMISSIBLE PER 100 CM; EX. 0+6 CM IF 500 CM<LENGTH<600 CM.

UNLESS OTHERWISE SPECIFIED DIMENSIONS ARE IN INCHES AND [MILLIMETERS]. TOLERANCES ARE: FRACTIONS DECIMALS 1/16 1/32 1/64 1/8 1/16 1/32 1/64 20X# .010 30X# .010 40X# .010 50X# .010		CONTRACT NO.		 SCHNEIDER ELECTRIC Critical Power & Cooling Service Division One Schneider Way, Basking Ridge, NJ 07005 U.S.A.	
SEE NOTES		APPROVALS			
MATERIAL		DATE		WIRE ASSY INPUT/OUTPUT POWER MBP TO UPS BRAVO2	
SEE NOTES		26/11/19			
FINISH		26/11/19			
SEE NOTES		ISSUED ST		SIZE: 9L985 SCALE: NONE DWG NO. OW13194 SHEET 1 OF 2	