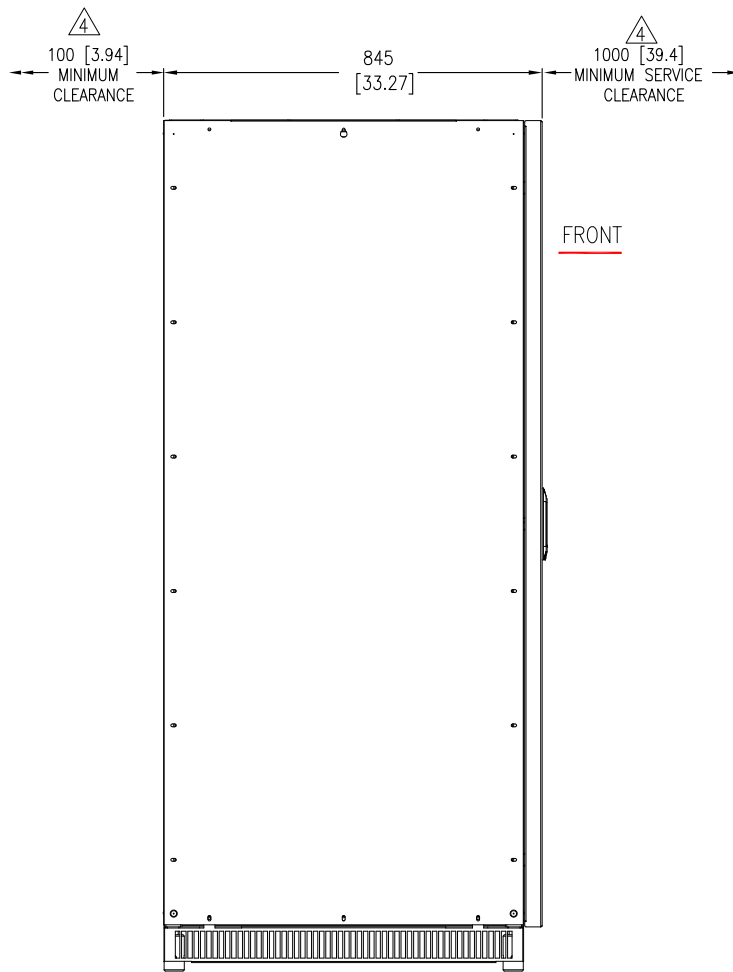
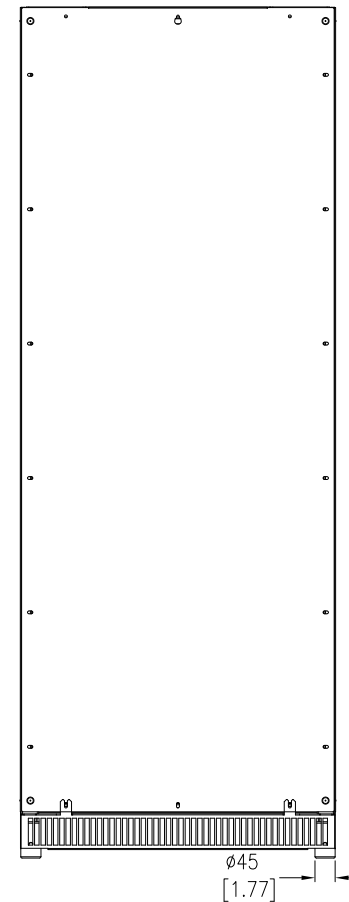


FRONT VIEW



LEFT SIDE VIEW



REAR VIEW

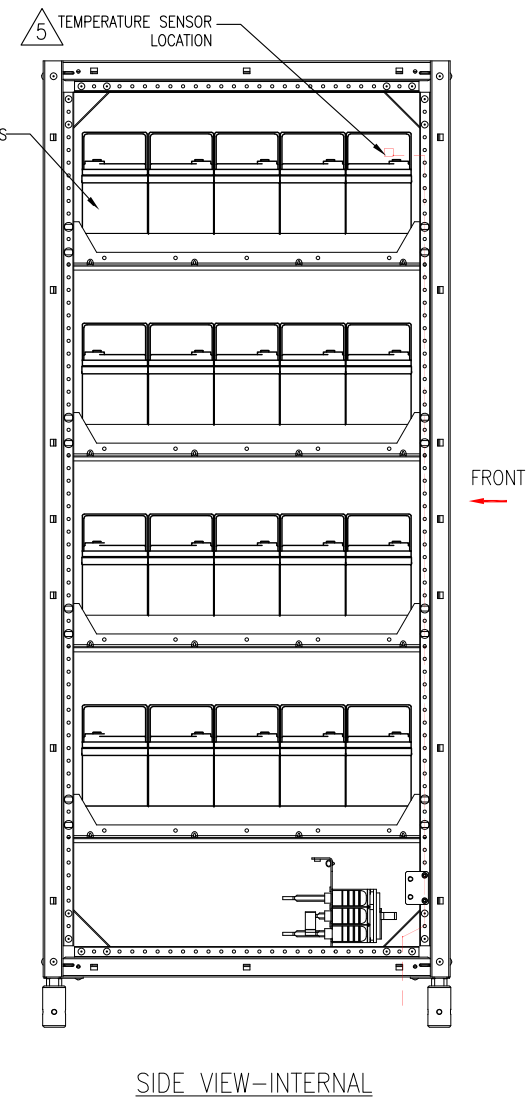
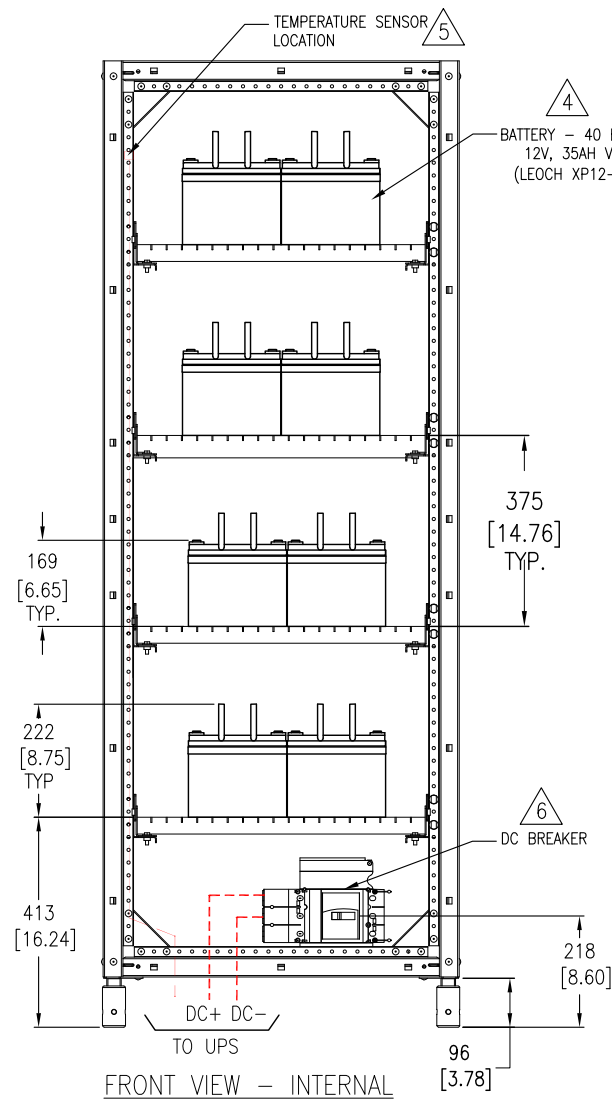
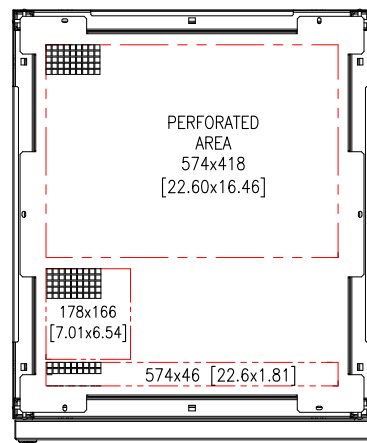
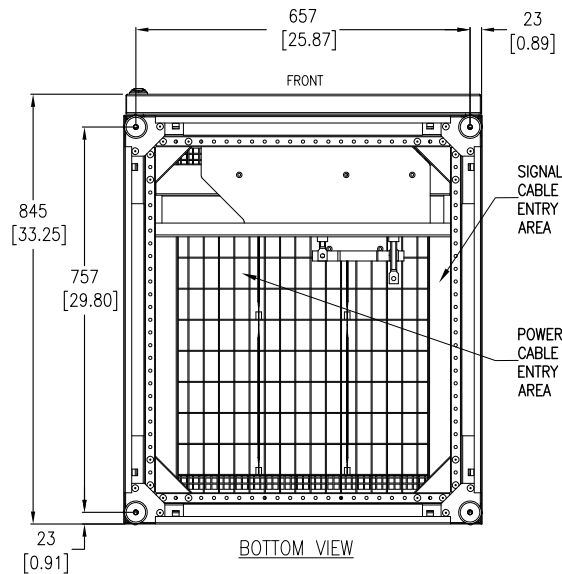
NOTES:

1. INSTALLATION SHALL COMPLY WITH ALL APPLICABLE NATIONAL, STATE AND LOCAL ELECTRICAL REGULATIONS.
2. REFER TO PRODUCT DOCUMENTATION FOR ADDITIONAL DETAILS PRIOR TO INSTALLATION AND SITE PREPARATION WORK.
3. ALL DIMENSIONS ARE IN MILLIMETERS [INCHES].
- △ 4. CLEARANCE DIMENSIONS ARE MEANT FOR AIR FLOW AND SERVICES ACCESS ONLY. CONSULT WITH THE LOCAL SAFETY CODES AND STANDARDS FOR ADDITIONAL REQUIREMENTS IN YOUR AREA.
THE ROOM SHOULD BE VENTILATED TO PREVENT THE CONCENTRATION OF THE DIHYDROGEN GENERATED BY THE BATTERY CABINET.
RECOMMENDED MINIMUM AIRFLOW IS 2.41m³/h.
- △ 5. DIMENSION EXCLUDES SKIN AND SCREW PROJECTIONS.
6. THE WEIGHT OF THE UNIT IS 637 kg [1404 lb].
7. OPERATING TEMPERATURE: 0°C TO 40°C [32°F TO 104°F]
8. COLOR: RAL 9003 WHITE, GLOSS LEVEL 85%.
9. PROTECTION CLASS - IP20
10. DOOR SWING: FREELY ROTATES BY 130°.
11. CABLE ENTRY IS FROM BOTTOM OF THE UNIT.

THIS DRAWING AND SPECIFICATIONS HEREIN ARE THE PROPERTY OF SCHNEIDER ELECTRIC AND SHALL NOT BE COPIED, REPRODUCED OR USED IN WHOLE OR IN PART, AS THE BASIS FOR THE MANUFACTURE OR SALE OF ITEMS WITHOUT WRITTEN PERMISSION FROM SCHNEIDER ELECTRIC. THIS DRAWING IS BASED UPON LATEST AVAILABLE INFORMATION AND IS SUBJECT TO CHANGE WITHOUT NOTICE.



TITLE:	GALAXY VS CLASSIC BATTERY CABINET - 700mm, IEC WITH 40 Nos. XP12-150 BATTERIES, CONFIG-D GENERAL ARRANGEMENT		DWG NO:	GVSCBC7D	REV.	0
PROJECT:	SUBMITTAL DRAWINGS	SHEET 1 OF 3	DRAWN:	BALA	9-FEB-21	FIRST ANGLE PROJECTION
			ENGINEER:	S B	29-JUN-21	
			APPROVED:	S B	29-JUN-21	



6

3 POLE DC BREAKER TRIP SETTING NSX100SDC (LV438018) + TM80G (LV430080)			
UPS RATING (kW)	I _r (A) @ POWER FACTOR		I _m (A)
	0.8	0.9	
20	56		250 (FIXED)
30	72		
40-50	80		
60	80	NA	

NOTES:

- INSTALLATION SHALL COMPLY WITH ALL APPLICABLE NATIONAL, STATE AND LOCAL ELECTRICAL REGULATIONS.
- REFER TO PRODUCT DOCUMENTATION FOR ADDITIONAL DETAILS PRIOR TO INSTALLATION AND SITE PREPARATION WORK.
- ALL DIMENSIONS ARE IN MILLIMETERS [INCHES].
- BATTERIES SHOWN ARE TYPICAL.
- ONE TEMPERATURE SENSOR IS PROVIDED WITH THE GVS SERIES UPS. CONTACT SCHNEIDER ELECTRIC IF ANOTHER IS REQUIRED.
- REFER TO TABLE FOR BREAKER DETAILS.

THIS DRAWING AND SPECIFICATIONS HEREIN ARE THE PROPERTY OF SCHNEIDER ELECTRIC AND SHALL NOT BE COPIED, REPRODUCED OR USED IN WHOLE OR IN PART, AS THE BASIS FOR THE MANUFACTURE OR SALE OF ITEMS WITHOUT WRITTEN PERMISSION FROM SCHNEIDER ELECTRIC. THIS DRAWING IS BASED UPON LATEST AVAILABLE INFORMATION AND IS SUBJECT TO CHANGE WITHOUT NOTICE.

Schneider Electric

TITLE: GALAXY VS CLASSIC BATTERY CABINET - 700mm, IEC WITH 40 Nos. XP12-150 BATTERIES, CONFIG-D TOP, BOTTOM AND INTERNAL VIEWS

PROJECT: SUBMITTAL DRAWINGS SHEET 2 OF 3

DWG NO: GVSCBC7D

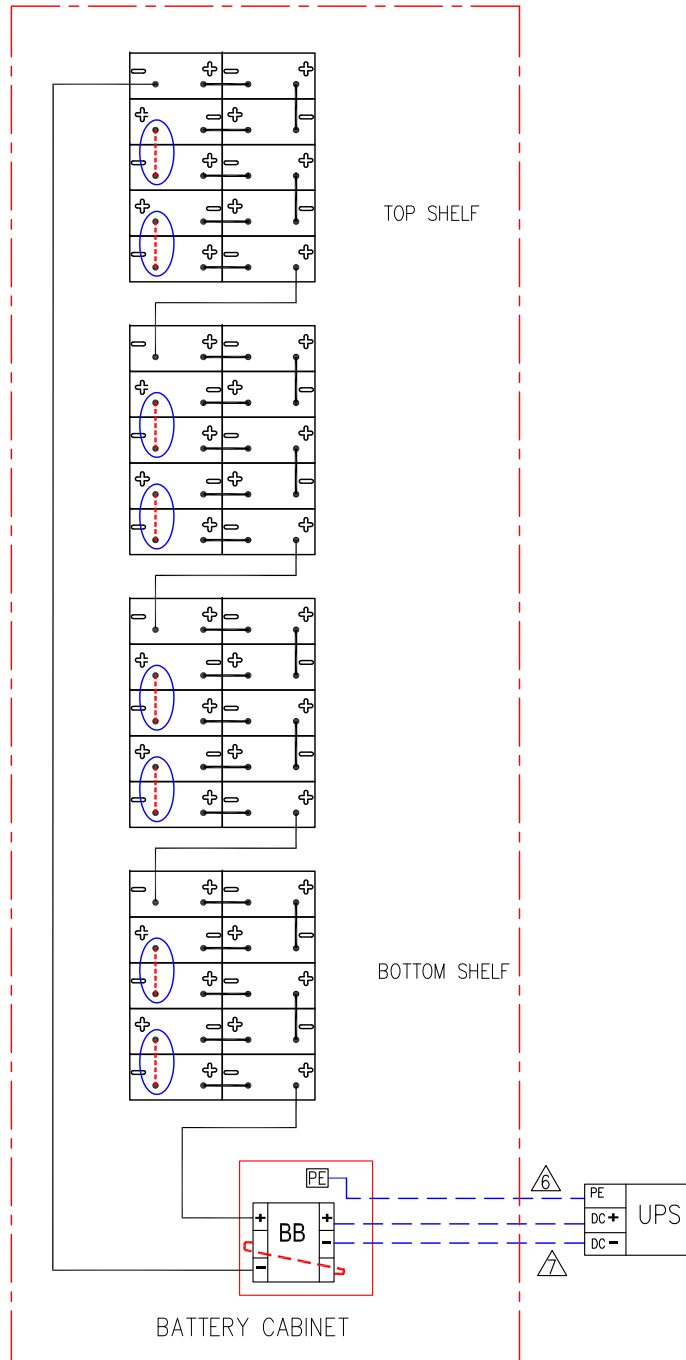
DRAWN: BALA 9-FEB-21

ENGINEER: S B 29-JUN-21

APPROVED: S B 29-JUN-21

REV: 0

FIRST ANGLE PROJECTION



BATTERY RUNTIME DETAILS FOR GALAXY VS 400V UPS							
UPS RATING (kW)	SKU NUMBER	RUNTIME IN MINUTES					
		1 x GVSCBC7D			2 x GVSCBC7D		
		PF 0.8	PF 0.9	PF 1	PF 0.8	PF 0.9	PF 1
20	GVSUPS20KHS/ GVSUPS20KRHS	40.5	35.0	31.0	92.0	80.5	71.5
30	GVSUPS30KHS/ GVSUPS30KRHS	24.5	21.0	18.5	57.5	50.0	44.0
40	GVSUPS40KHS/ GVSUPS40KRHS	16.5	14.5	12.5	40.5	35.0	31.0
50	GVSUPS50KHS/ GVSUPS50KRHS	12.5	10.5	9.0	31.0	26.5	23.0
60	GVSUPS60KHS/ GVSUPS60KRHS	9.6	8.0	6.8	24.5	21.0	18.5
80	GVSUPS80KHS/ GVSUPS80KRHS	6.1	N A	N A	16.5	14.0	12.5
100	GVSUPS100KHS/ GVSUPS100KRHS	N A			12.5	10.5	8.9
120	GVSUPS120KHS/ GVSUPS120KRHS				9.6	8.0	6.8
150	GVSUPS150KHS/ GVSUPS150KRHS				6.8	5.5	4.6

LEGEND:

- AND HIGHLIGHTED BY ○ CONNECTED ON SITE
- CONNECTED IN FACTORY

NOTES:

1. INSTALLATION SHALL COMPLY WITH ALL APPLICABLE NATIONAL, STATE AND LOCAL ELECTRICAL REGULATIONS.
2. REFER TO PRODUCT DOCUMENTATION FOR ADDITIONAL DETAILS PRIOR TO INSTALLATION AND SITE PREPARATION WORK.
3. TORQUE FOR SCREWS TO CONNECT BATTERIES IS 11NM.
4. EARTHING IS ESSENTIAL BEFORE STARTUP.
5. CABLE CONNECTION ON BATTERY TERMINALS MUST BE COVERED WITH PLASTIC CAPS.
6. THE GROUND CONNECTION TO THE CLASSIC BATTERY CABINET MUST BE MADE DIRECTLY FROM THE UPS CABINET.
7. MAXIMUM ALLOWABLE DISTANCE BETWEEN BATTERY CABINET AND UPS IS 200Meters [656Feet]. FOR CABLE SPECIFICATION, REFER TO INSTALLATION MANUAL.
8. BATTERY TYPE: XP12-150, 40 BLOCKS.
9. FOR INTERFACE DETAILS REFER TO SYSTEM WIRING DIAGRAM GVSUPS20K150HS-WD.

THIS DRAWING AND SPECIFICATIONS HEREIN ARE THE PROPERTY OF SCHNEIDER ELECTRIC AND SHALL NOT BE COPIED, REPRODUCED OR USED IN WHOLE OR IN PART, AS THE BASIS FOR THE MANUFACTURE OR SALE OF ITEMS WITHOUT WRITTEN PERMISSION FROM SCHNEIDER ELECTRIC. THIS DRAWING IS BASED UPON LATEST AVAILABLE INFORMATION AND IS SUBJECT TO CHANGE WITHOUT NOTICE.



TITLE: GALAXY VS CLASSIC BATTERY CABINET - 700mm, IEC WITH 40 Nos. XP12-150 BATTERIES, CONFIG-D CABLING DIAGRAM & RUNTIME DETAILS
 PROJECT: SUBMITTAL DRAWINGS SHEET 3 OF 3

DWG NO: GVSCBC7D REV. 0
 DRAWN: BALA 9-FEB-21 ANGLE PROJECTION
 ENGINEER: S B 29-JUN-21 N.A.
 APPROVED: S B 29-JUN-21