

**NOTES:**

1. INSTALLATION SHALL COMPLY WITH ALL APPLICABLE NATIONAL, STATE AND LOCAL ELECTRICAL REGULATIONS.
2. REFER TO PRODUCT DOCUMENTATION FOR ADDITIONAL DETAILS PRIOR TO INSTALLATION AND SITE PREPARATION WORK.
3. ALL DIMENSIONS ARE IN MILLIMETERS [INCHES].
- △4. FRONT ACCESS REQUIRED FOR SERVICE. MINIMUM REQUIRED FRONT CLEARANCE IS 980mm [38.58 Inches], REAR CLEARANCE REQUIRED IS 150mm [5.91 Inches]. BUT IF NEED TO REPLACE THE BATTERY FROM REAR, THE REQUIRED CLEARANCE WILL BE ≥ 1000 [39.37]
- △5. DIMENSION EXCLUDES SKIN AND SCREW PROJECTIONS.
6. THE WEIGHT OF THE UNIT IS 580kg [1279 lb].
7. OPERATING TEMPERATURE: 0°C TO 40°C [32°F TO 104°F]
8. COLOR: RAL 9003 WHITE.
9. PROTECTION CLASS - IP20.
- △10. THIS INFORMATION PROVIDES APPROXIMATE CENTER OF GRAVITY CALCULATION.
11. DOOR SWING: FREELY ROTATES BY 130°.
12. CABLE ENTRY IS FROM BOTTOM OF THE UNIT.

THIS DRAWING AND SPECIFICATIONS HEREIN ARE THE PROPERTY OF SCHNEIDER ELECTRIC AND SHALL NOT BE COPIED, REPRODUCED OR USED IN WHOLE OR IN PART, AS THE BASIS FOR THE MANUFACTURE OR SALE OF ITEMS WITHOUT WRITTEN PERMISSION FROM SCHNEIDER ELECTRIC. THIS DRAWING IS BASED UPON LATEST AVAILABLE INFORMATION AND IS SUBJECT TO CHANGE WITHOUT NOTICE.



TITLE:  
GALAXY VS  
CLASSIC BATTERY CABINET - 700mm, IEC  
WITH BATTERIES, CONFIG.-A  
GENERAL ARRANGEMENT

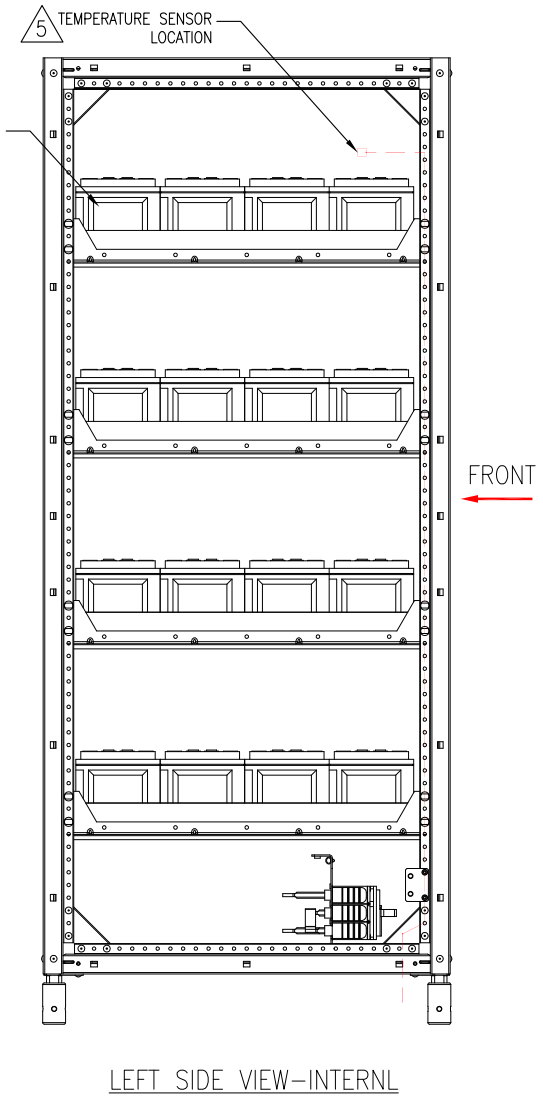
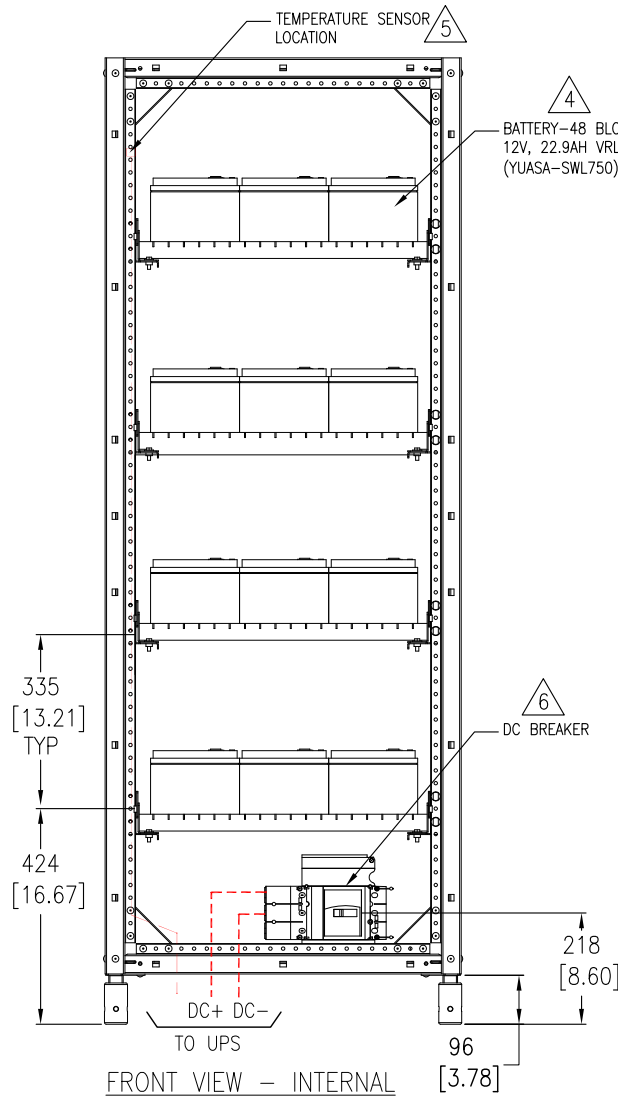
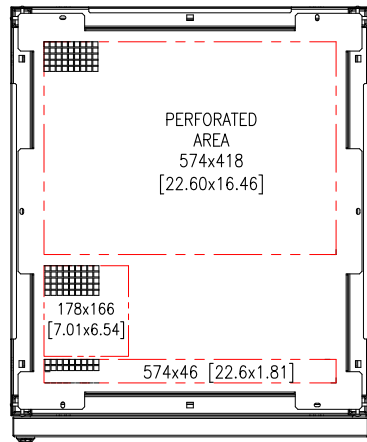
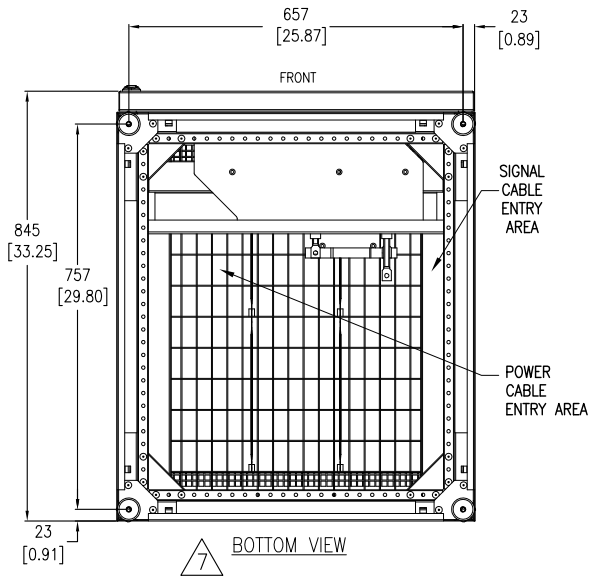
DWG NO: GVSCBC7A

REV. 0

PROJECT: SUBMITTAL DRAWINGS SHEET 1 OF 3

DRAWN:	BALA	15-OCT-19
ENGINEER:	ALICE	18-OCT-19
APPROVED:	JACHEN	18-OCT-19

FIRST ANGLE PROJECTION



△6

3 POLE DC BREAKER TRIP SETTING NSX100SDC (LV438018) + TM80G (LV430080)			
UPS RATING (kW)	I <sub>r</sub> (A) @ POWER FACTOR		I <sub>m</sub> (A)
	0.8	0.9	
20	56		250 (FIXED)
30	72		
40 / 50	80		
60	80	NA	

NOTES:

1. INSTALLATION SHALL COMPLY WITH ALL APPLICABLE NATIONAL, STATE AND LOCAL ELECTRICAL REGULATIONS.
2. REFER TO PRODUCT DOCUMENTATION FOR ADDITIONAL DETAILS PRIOR TO INSTALLATION AND SITE PREPARATION WORK.
3. ALL DIMENSIONS ARE IN MILLIMETERS [INCHES].
- △4. BATTERIES SHOWN ARE TYPICAL.
- △5. ONE TEMPERATURE SENSOR IS PROVIDED WITH THE GVS SERIES UPS. CONTACT SCHNEIDER ELECTRIC IF ANOTHER IS REQUIRED.
- △6. REFER TO TABLE FOR BREAKER DETAILS.
- △7. DIMENSIONS OF CABINET MAY HAVE SOME VARIATIONS. PREVIOUS VERSION OF CABINET HAD DIMENSIONS OF 1970x700x830.

THIS DRAWING AND SPECIFICATIONS HEREIN ARE THE PROPERTY OF SCHNEIDER ELECTRIC AND SHALL NOT BE COPIED, REPRODUCED OR USED IN WHOLE OR IN PART, AS THE BASIS FOR THE MANUFACTURE OR SALE OF ITEMS WITHOUT WRITTEN PERMISSION FROM SCHNEIDER ELECTRIC. THIS DRAWING IS BASED UPON LATEST AVAILABLE INFORMATION AND IS SUBJECT TO CHANGE WITHOUT NOTICE.

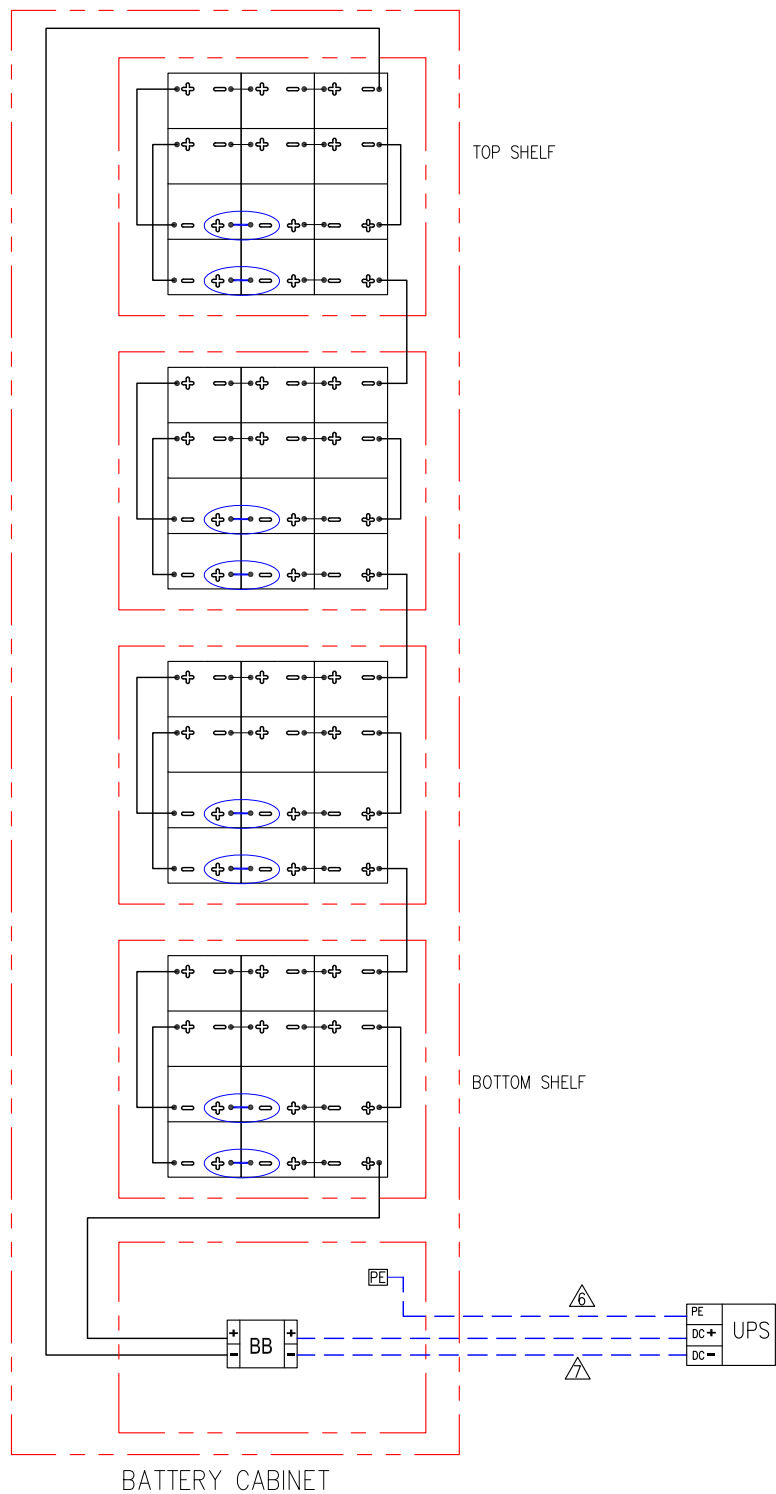
**Schneider Electric**

TITLE:  
GALAXY VS  
CLASSIC BATTERY CABINET - 700mm, IEC  
WITH BATTERIES, CONFIG.-A  
TOP, BOTTOM AND INTERNAL VIEWS

PROJECT: SUBMITTAL DRAWINGS SHEET 2 OF 3

DWG NO: **GVSCBC7A** REV. **0**

DRAWN:	BALA	15-OCT-19	FIRST ANGLE PROJECTION
ENGINEER:	ALICE	18-OCT-19	
APPROVED:	JIACHEN	18-OCT-19	



BATTERY RUNTIMES (minutes) at Full Load (calculated)			Classic Battery Cabinets					
			1x GVSCBC7A			2x GVSCBC7A		
			700mm/28" Wide			2x 700mm/28" Wide		
			48 Batteries			48 Batteries		
Voltage	UPS Rating	UPS SKU	PF 0.8	PF 0.9	PF 1	PF 0.8	PF 0.9	PF 1
400V	20kW	GVSUPS20KHS	34.0	29.5	25.5	81.5	71.0	62.0
	30kW	GVSUPS30KHS	20.0	16.5	14.0	49.5	43.0	37.5
	40kW	GVSUPS40KHS	13.0	10.5	9.0	34.5	29.5	25.5
	50kW	GVSUPS50KHS	9.0	7.2	5.8	25.5	21.5	18.5
	60kW	GVSUPS60KHS	6.4	*N/A	*N/A	20.0	16.5	14.0
	80kW	GVSUPS80KHS	*N/A	*N/A	*N/A	13.0	10.5	9.0
	100kW	GVSUPS100KHS	*N/A	*N/A	*N/A	9.0	7.2	5.8

\* NOT AVAILABLE AS THIS SOLUTION PROVIDES LESS THAN 5 MINUTES RUNTIME

LEGEND:

- AND HIGHLIGHTED BY ○ CONNECTED ON SITE
- CONNECTED IN FACTORY

NOTES:

1. INSTALLATION SHALL COMPLY WITH ALL APPLICABLE NATIONAL, STATE AND LOCAL ELECTRICAL REGULATIONS.
2. REFER TO PRODUCT DOCUMENTATION FOR ADDITIONAL DETAILS PRIOR TO INSTALLATION AND SITE PREPARATION WORK.
3. TORQUE FOR SCREWS TO CONNECT BATTERIES IS 11NM.
4. EARTHING IS ESSENTIAL BEFORE STARTUP.
5. CABLE CONNECTION ON BATTERY TERMINALS MUST BE COVERED WITH PLASTIC CAPS.
6. THE GROUND CONNECTION TO THE CLASSIC BATTERY CABINET MUST BE MADE DIRECTLY FROM THE UPS CABINET.
7. MAXIMUM ALLOWABLE DISTANCE BETWEEN BATTERY CABINET AND UPS IS 200Meters [656Feet]. FOR CABLE SPECIFICATION, REFER TO INSTALLATION MANUAL.
8. BATTERY TYPE: SWL750, 48 BLOCKS.
9. FOR INTERFACE DETAILS REFER TO SYSTEM WIRING DIAGRAM GVSUPS20K150HS-WD.

THIS DRAWING AND SPECIFICATIONS HEREIN ARE THE PROPERTY OF SCHNEIDER ELECTRIC AND SHALL NOT BE COPIED, REPRODUCED OR USED IN WHOLE OR IN PART, AS THE BASIS FOR THE MANUFACTURE OR SALE OF ITEMS WITHOUT WRITTEN PERMISSION FROM SCHNEIDER ELECTRIC. THIS DRAWING IS BASED UPON LATEST AVAILABLE INFORMATION AND IS SUBJECT TO CHANGE WITHOUT NOTICE.



TITLE:	GALAXY VS CLASSIC BATTERY CABINET - 700mm, IEC WITH BATTERIES, CONFIG.-A CABLING DIAGRAM & RUNTIME DETAILS		DWG NO:	GVSCBC7A	REV.	1
PROJECT: SUBMITTAL DRAWINGS	SHEET 3 OF 3	APPROVED:	BALA	7-NOV-19	ANGLE	PROJECTION
			ALICE	7-NOV-19	N.A.	
			JIACHEN	7-NOV-19		