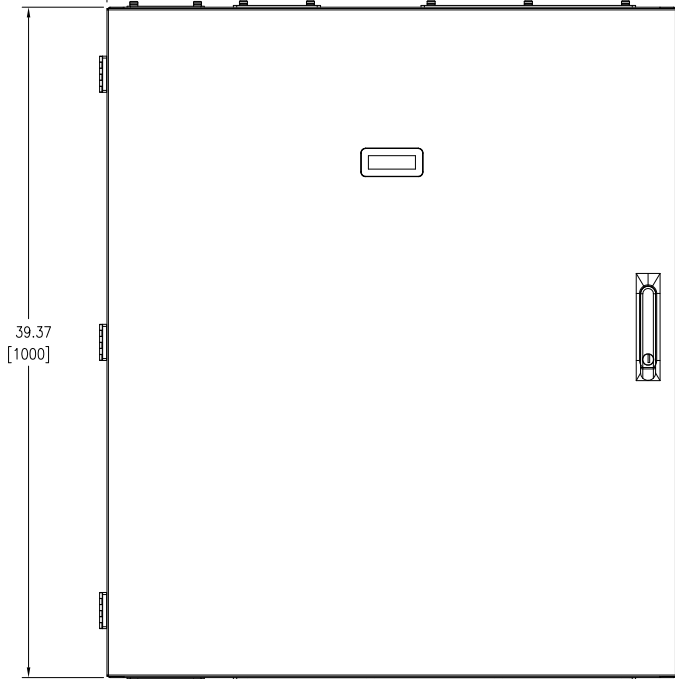
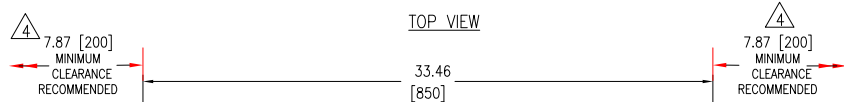
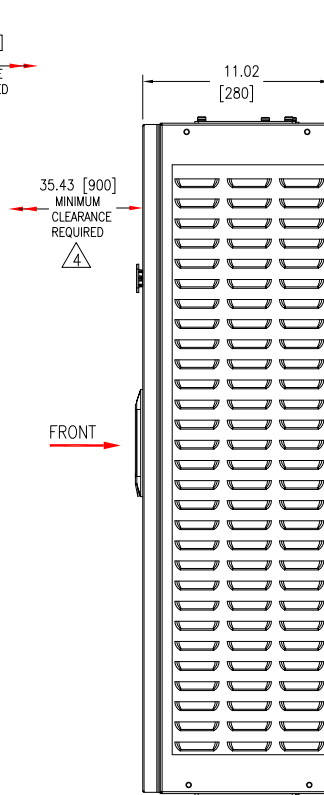


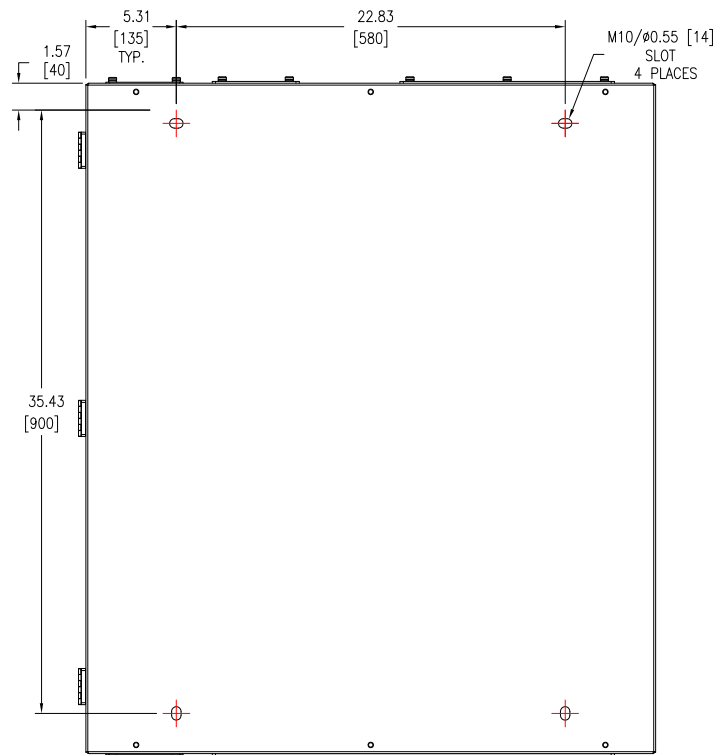
TOP VIEW



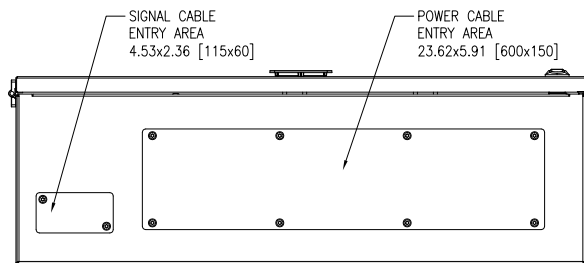
FRONT VIEW



SIDE VIEW



FRONT VIEW-WALLMOUNT DETAILS
(DOOR AND INTERNAL DETAILS NOT SHOWN)



BOTTOM VIEW

NOTES:

1. INSTALLATION SHALL COMPLY WITH ALL APPLICABLE NATIONAL, STATE AND LOCAL CODES.
2. REFER TO PRODUCT DOCUMENTATION FOR ADDITIONAL DETAILS PRIOR TO INSTALLATION AND SITE PREPARATION WORK.
3. ALL DIMENSIONS ARE IN INCHES [MILLIMETERS].
- △4. MINIMUM SPACE FOR SERVICE HEIGHT IS 78 [1981] AS MEASURED FROM THE PLATFORM OR FLOOR. CLEARANCE DIMENSIONS ARE MEANT FOR AIRFLOW AND SERVICE ACCESS ONLY. CONSULT WITH LOCAL SAFETY CODES AND STANDARDS FOR ADDITIONAL REQUIREMENTS IN YOUR LOCAL AREA.
5. CABLE ENTRY IS FROM TOP OR BOTTOM OF UNIT.
6. WEIGHT OF UNIT 185.19 lbs {84 kg}.
7. PROTECTION CLASS: IP20.
8. OPERATING TEMPERATURE: 32°F TO 104° {0° TO 40°C}.
9. PANEL COLOR: RAL 9003, GLOSS LEVEL 85%.

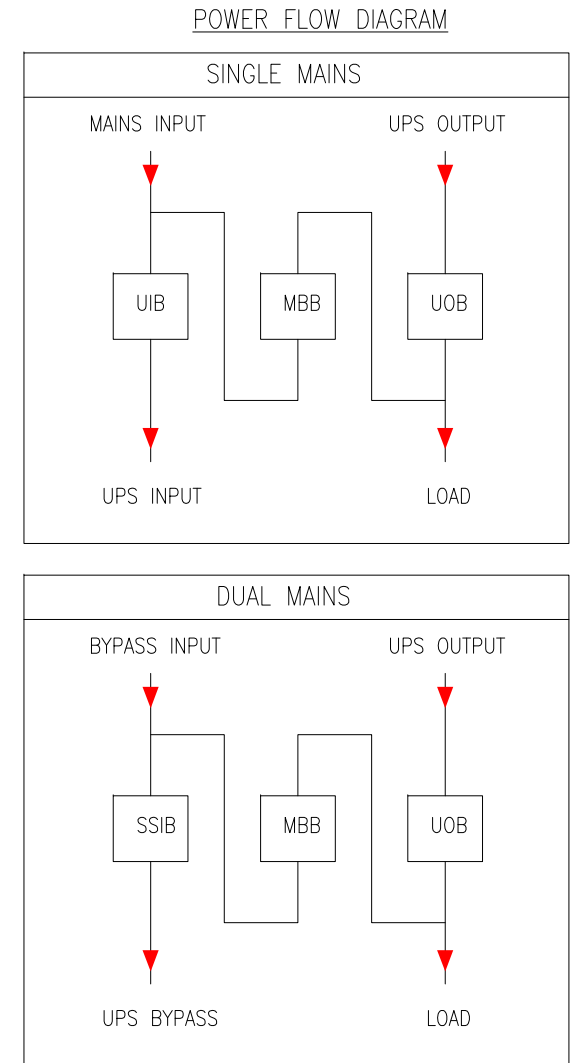
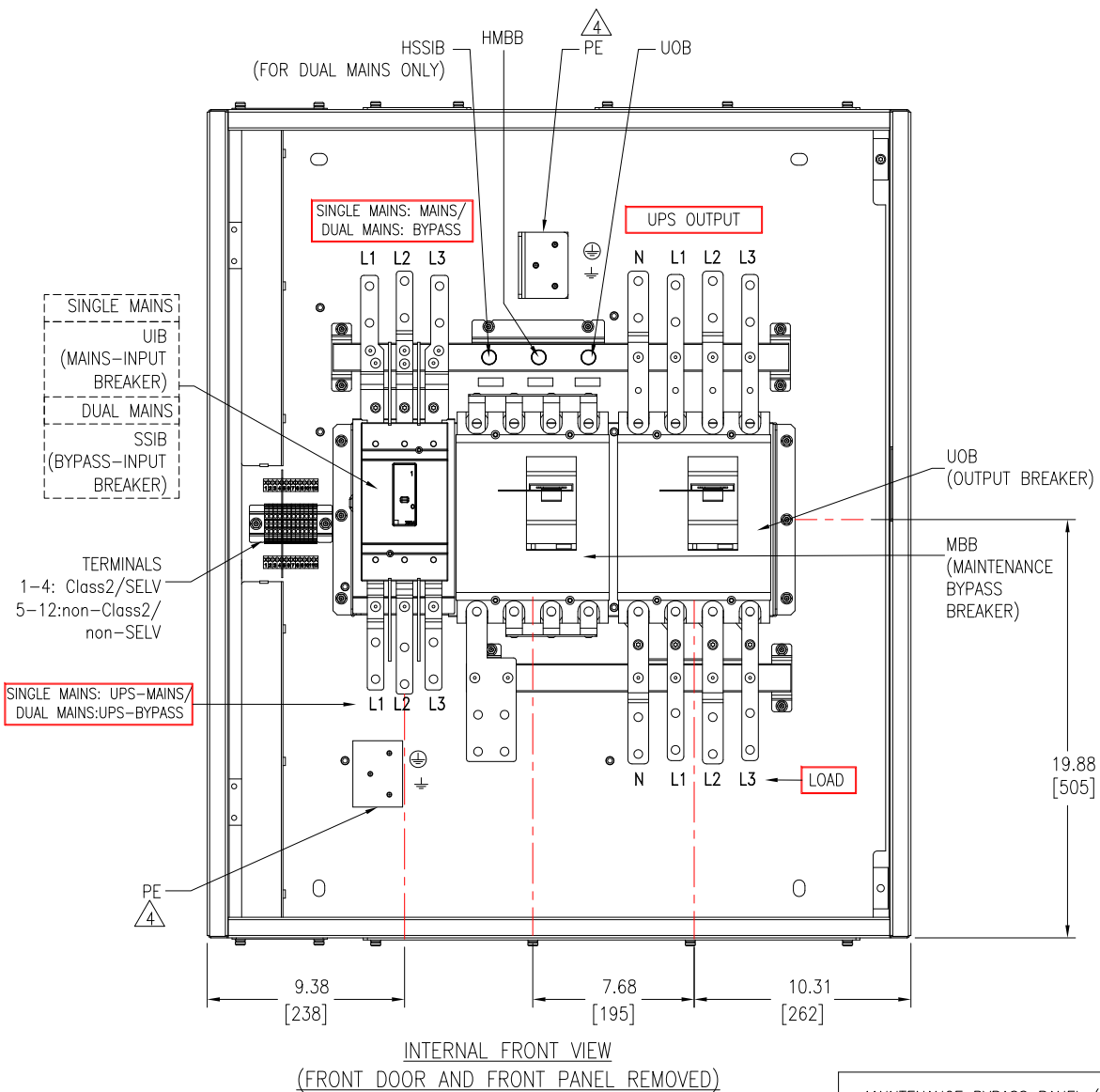
THIS DRAWING AND SPECIFICATIONS HEREIN ARE THE PROPERTY OF SCHNEIDER ELECTRIC AND SHALL NOT BE COPIED, REPRODUCED OR USED IN WHOLE OR IN PART, AS THE BASIS FOR THE MANUFACTURE OR SALE OF ITEMS WITHOUT WRITTEN PERMISSION FROM SCHNEIDER ELECTRIC. THIS DRAWING IS BASED UPON LATEST AVAILABLE INFORMATION AND IS SUBJECT TO CHANGE WITHOUT NOTICE.



TITLE: Galaxy VS
WALLMOUNT MAINTENANCE BYPASS PANEL
20-50kW@208V, 50-100kW@480V, 3PH, 60Hz
GENERAL ARRANGEMENT

PROJECT: DRAWINGS SHEET 1 OF 3

DWG NO:	CVSBPSU100G-WP		REV.	1
DRAWN BY:	BALA	13-SEP-19	FIRST ANGLE PROJECTION	
ENGINEER:	ChenLei BAO	4-NOV-19		
APPROVED BY:	JiaChen LIN	4-NOV-19		



MAINTENANCE BYPASS PANEL (MBP) SWITCHGEAR DETAIL (MAKE: SCHNEIDER ELECTRIC)	
DEVICE ID	MODEL NUMBER AND SPECIFICATION
UIB / SSIB	250A 600V AC 3P (JfF36250CU31X)
MBB / UOB	250A 600V AC 4P (LJF46250CU31X)

NOTES:

1. INSTALLATION SHALL COMPLY WITH ALL APPLICABLE NATIONAL, STATE AND LOCAL CODES.
2. REFER TO PRODUCT DOCUMENTATION FOR ADDITIONAL DETAILS PRIOR TO INSTALLATION AND SITE PREPARATION WORK.
3. ALL DIMENSIONS ARE IN INCHES [MILLIMETERS].
- △ 4. ONLY ONE QUANTITY OF PE BUSBAR PROVIDED IN THE CABINET. THE SAME TO BE MOUNTED IN THE TOP AS SHOWN FOR TOP CABLE ENTRY. FOR BOTTOM CABLE ENTRY THE SAME TO BE MOUNTED IN THE BOTTOM AS SHOWN.

THIS DRAWING AND SPECIFICATIONS HEREIN ARE THE PROPERTY OF SCHNEIDER ELECTRIC AND SHALL NOT BE COPIED, REPRODUCED OR USED IN WHOLE OR IN PART, AS THE BASIS FOR THE MANUFACTURE OR SALE OF ITEMS WITHOUT WRITTEN PERMISSION FROM SCHNEIDER ELECTRIC. THIS DRAWING IS BASED UPON LATEST AVAILABLE INFORMATION AND IS SUBJECT TO CHANGE WITHOUT NOTICE.

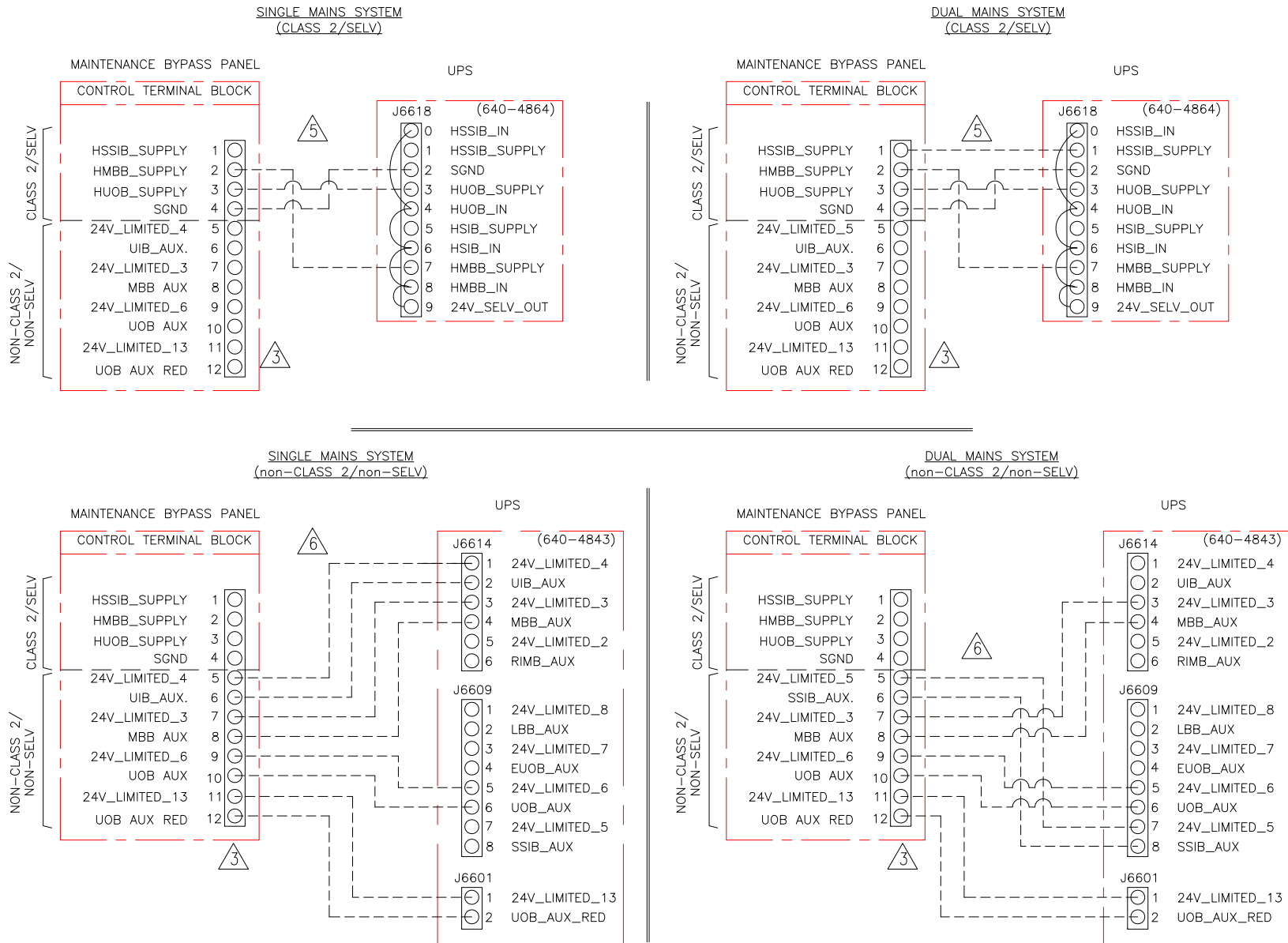


TITLE: Galaxy VS
 WALLMOUNT MAINTENANCE BYPASS PANEL
 20-50kW@208V, 50-100kW@480V, 3PH, 60Hz
 GENERAL ARRANGEMENT

PROJECT: DRAWINGS SHEET 2 OF 3

DWG NO:	CVSBPSU100G-WP		REV.
DRAWN BY:	BALA	13-SEP-19	FIRST
ENGINEER:	ChenLei BAO	15-OCT-19	ANGLE
APPROVED BY:	JiaChen LIN	15-OCT-19	PROJECTION

INTERFACE BETWEEN UPS AND WALL MOUNT MAINTENANCE BYPASS PANEL



NOTES:

1. INSTALLATION SHALL COMPLY WITH ALL APPLICABLE NATIONAL, STATE AND LOCAL CODES.
2. REFER TO PRODUCT INSTALLATION DOCUMENTATION FOR SITE PREPARATIONS.
- △3. TERMINALS 11 AND 12 ARE ONLY PRESENT IN GVSBPUS100G-WP, NOT PRESENT ON THE CONTROL TERMINAL BLOCK IN GVSBPUS60G-WP AND THERE IS NO CONNECTION NEEDED TO J6601 IN THE UPS.
4. -----CABLES PROVIDED BY CUSTOMER.
- △5. THIS CABLE IS CLASSIFIED AS CLASS2/SELV, TO BE ORDERED SEPARATELY, FOR VARIOUS LENGTH AVAILABILITY CONTACT SCHNEIDER ELECTRIC.
- △6. THIS CABLE IS CLASSIFIED AS NON-CLASS2/NON-SELV, TO BE ORDERED SEPARATELY, FOR VARIOUS LENGTH AVAILABILITY CONTACT SCHNEIDER ELECTRIC.

THIS DRAWING AND SPECIFICATIONS HEREIN ARE THE PROPERTY OF SCHNEIDER ELECTRIC AND SHALL NOT BE COPIED, REPRODUCED OR USED IN WHOLE OR IN PART, AS THE BASIS FOR THE MANUFACTURE OR SALE OF ITEMS WITHOUT WRITTEN PERMISSION FROM SCHNEIDER ELECTRIC. THIS DRAWING IS BASED UPON LATEST AVAILABLE INFORMATION AND IS SUBJECT TO CHANGE WITHOUT NOTICE.



TITLE: Galaxy VS
WALLMOUNT MAINTENANCE BYPASS PANEL
20-50kW@208V, 50-100kW@480V, 3PH, 60Hz
INTERFACE DETAILS

PROJECT: DRAWINGS SHEET 3 OF 3

DWG NO:	GVSBPUS100G-WP	REV.	0
DRAWN BY:	BALA	10-SEP-19	ANGLE
ENGINEER:	ChenLei BAO	15-OCT-19	OF PROJ
APPROVED BY:	JiaChen LIN	15-OCT-19	N.△