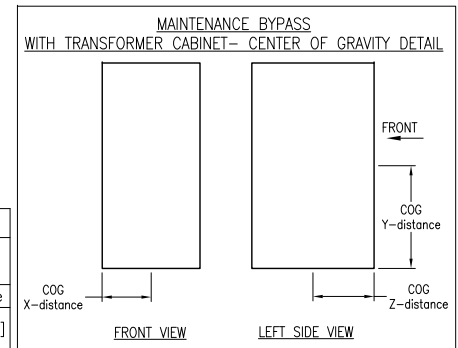


**NOTES:**

1. INSTALLATION SHALL COMPLY WITH ALL APPLICABLE NATIONAL, STATE AND LOCAL CODES.
2. REFER TO PRODUCT DOCUMENTATION FOR ADDITIONAL DETAILS PRIOR TO INSTALLATION AND SITE PREPARATION WORK.
3. ALL DIMENSIONS ARE IN INCHES [MILLIMETERS].
4. FRONT ACCESS REQUIRED FOR SERVICE.  
MINIMUM REQUIRED FRONT CLEARANCE IS 36.0[914.4]. REAR CLEARANCE REQUIRED FOR VENTILATION IS 5.91[150].
5. ALL DIMENSIONS ARE TO THE OUTSIDE EDGE OF THE CABINET, EXCLUDING LATCHES AND HARDWARE.
6. CABLE ENTRY IS FROM TOP OR BOTTOM OF THE UNIT.
7. POWER CABLES SHALL BE IN SEPARATE CONDUITS FROM CONTROL AND COMMUNICATION CABLES.
8. OPERATING TEMPERATURE: 32°F TO 104°F [0°C TO 40°C].
9. PROTECTION CLASS: IP20.
10. COLOR: RAL 9003, GLOSS LEVEL 85%.
11. THE TABLE PROVIDES WEIGHT AND CENTER OF GRAVITY DATA.
12. WHILE INSTALLING WITH UPS, REMOVE RIGHT SIDE COVER OF THE UPS UNIT AND ATTACH THE MBP WITH TRANSFORMER UNIT TO THE RIGHT SIDE OF THE UPS UNIT. RE-ATTACH RIGHT SIDE COVER OF THE UPS TO THE RIGHT SIDE OF THE MBP WITH TRANSFORMER UNIT.

WEIGHT AND CENTER OF GRAVITY DETAILS						
SKU	RATING kW	WEIGHT lbs (kg)	Center of Gravity inches [mm]			
			X-Distance	Y-Distance	Z-Distance	
GVSBPOT150	120-150	1958 [890]	26.13[663.82]	17.83[452.99]	4.05[103.09]	



THIS DRAWING AND SPECIFICATIONS HEREIN ARE THE PROPERTY OF SCHNEIDER ELECTRIC AND SHALL NOT BE COPIED, REPRODUCED OR USED IN WHOLE OR IN PART, AS THE BASIS FOR THE MANUFACTURE OR SALE OF ITEMS WITHOUT WRITTEN PERMISSION FROM SCHNEIDER ELECTRIC. THIS DRAWING IS BASED UPON LATEST AVAILABLE INFORMATION AND IS SUBJECT TO CHANGE WITHOUT NOTICE.

**Schneider Electric**

**TITLE:** Galaxy VS MBP WITH OUTPUT TRANSFORMER-150kW  
Input: 480V, 3PH, 60Hz  
Output: 208V, 3PH+N, 60Hz  
GENERAL ARRANGEMENT

**PROJECT:** SUBMITTAL DRAWINGS **SHEET** 1 OF 4

**DWG NO:** GVSBPOT150

**DRAWN BY:** K.NAGENDRA 03-APR-20

**ENGINEER:** PRASANNA T 03-APR-20

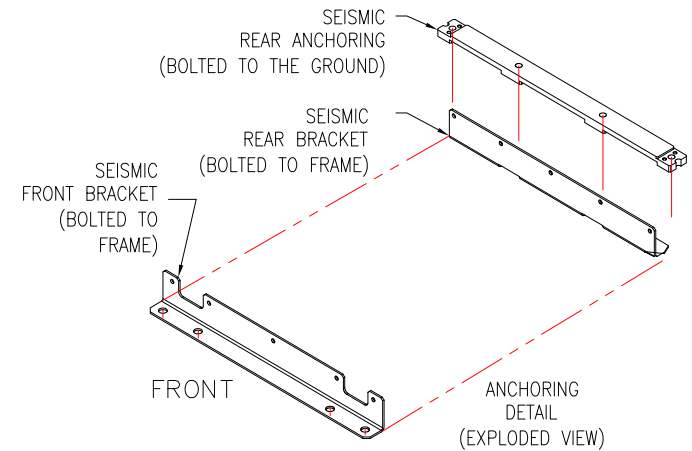
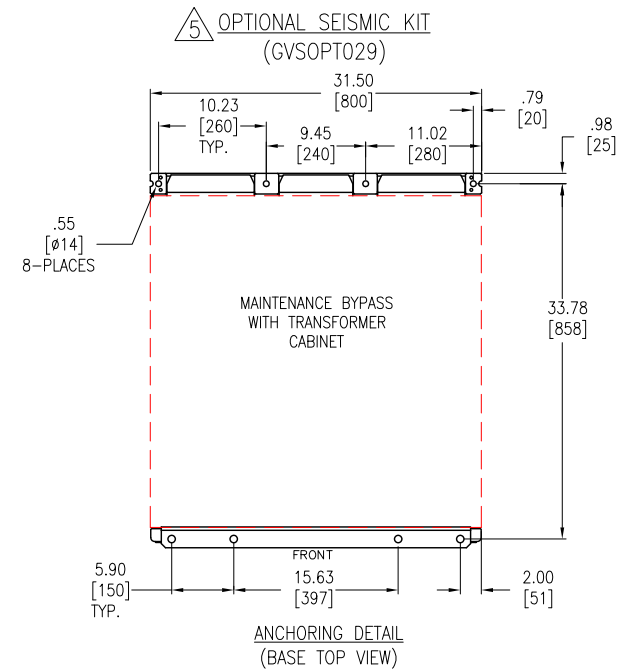
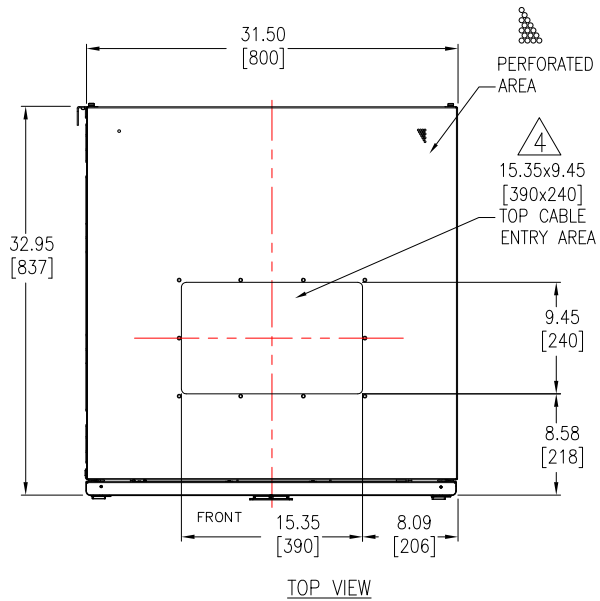
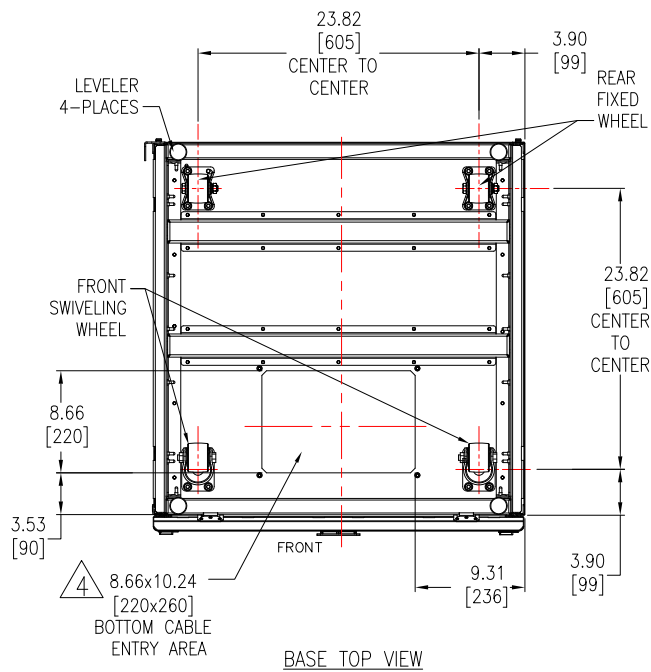
**APPROVED BY:** SURESH T 03-APR-20

**REV.** 0

**THIRD**

**ANGLE**

**PROJECTION**



**NOTES:**

1. INSTALLATION SHALL COMPLY WITH ALL APPLICABLE NATIONAL, STATE AND LOCAL CODES.
2. REFER TO PRODUCT DOCUMENTATION FOR ADDITIONAL DETAILS PRIOR TO INSTALLATION AND SITE PREPARATION WORK.
3. ALL DIMENSIONS ARE IN INCHES [MILLIMETERS].
- △ 4. DRILL/PUNCH HOLES IN PLATE. REMOVE PLATE FROM CABINET BEFORE DRILLING/PUNCHING.
- △ 5. FIXATION OF ANCHORING BRACKETS IS OPTIONAL IN NON-SEISMIC LOCATIONS.

THIS DRAWING AND SPECIFICATIONS HEREIN ARE THE PROPERTY OF SCHNEIDER ELECTRIC AND SHALL NOT BE COPIED, REPRODUCED OR USED IN WHOLE OR IN PART, AS THE BASIS FOR THE MANUFACTURE OR SALE OF ITEMS WITHOUT WRITTEN PERMISSION FROM SCHNEIDER ELECTRIC. THIS DRAWING IS BASED UPON LATEST AVAILABLE INFORMATION AND IS SUBJECT TO CHANGE WITHOUT NOTICE.



**TITLE:** Galaxy VS  
MBP WITH OUTPUT TRANSFORMER-150kW  
Input: 480V, 3PH, 60Hz  
Output: 208V, 3PH+N, 60Hz  
TOP-BOTTOM VIEWS & ANCHORING

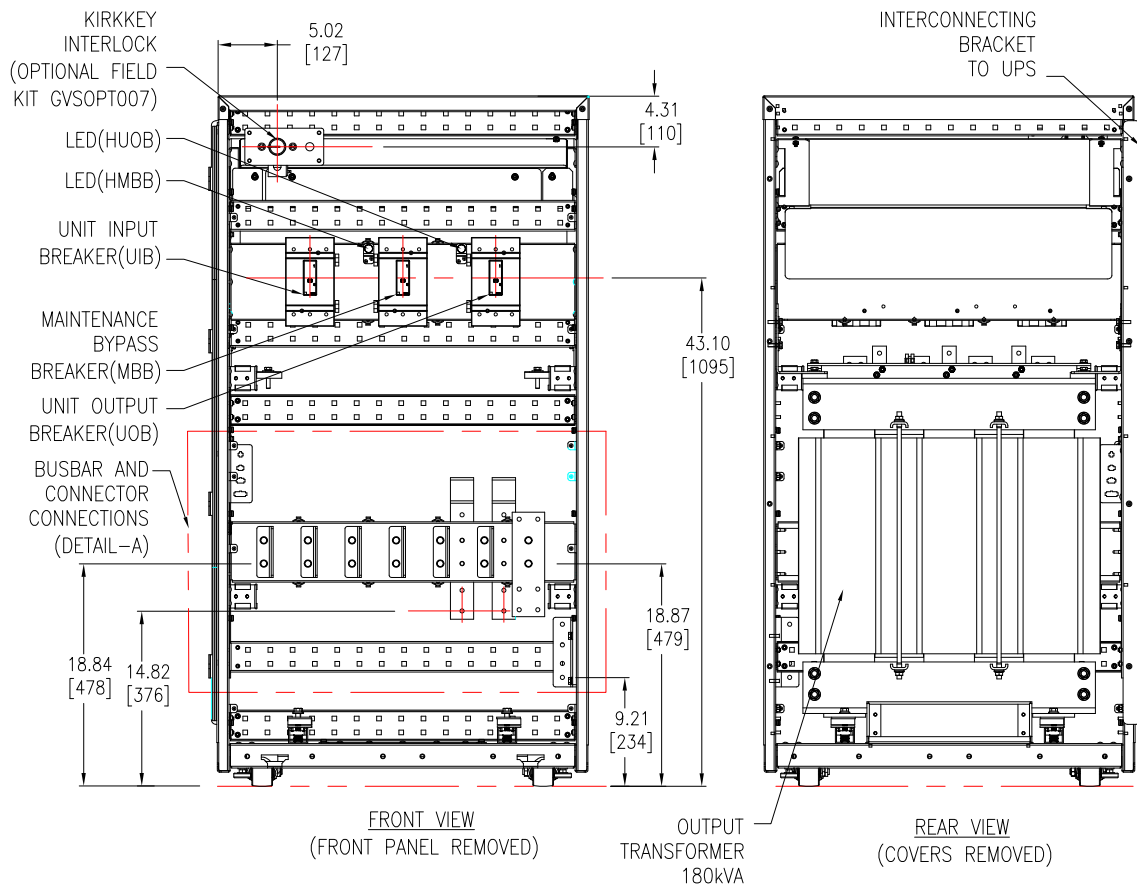
**PROJECT:** SUBMITTAL DRAWINGS **SHEET 2 OF 4**

**DWG NO:** GVSBPOT150 **REV.** 0

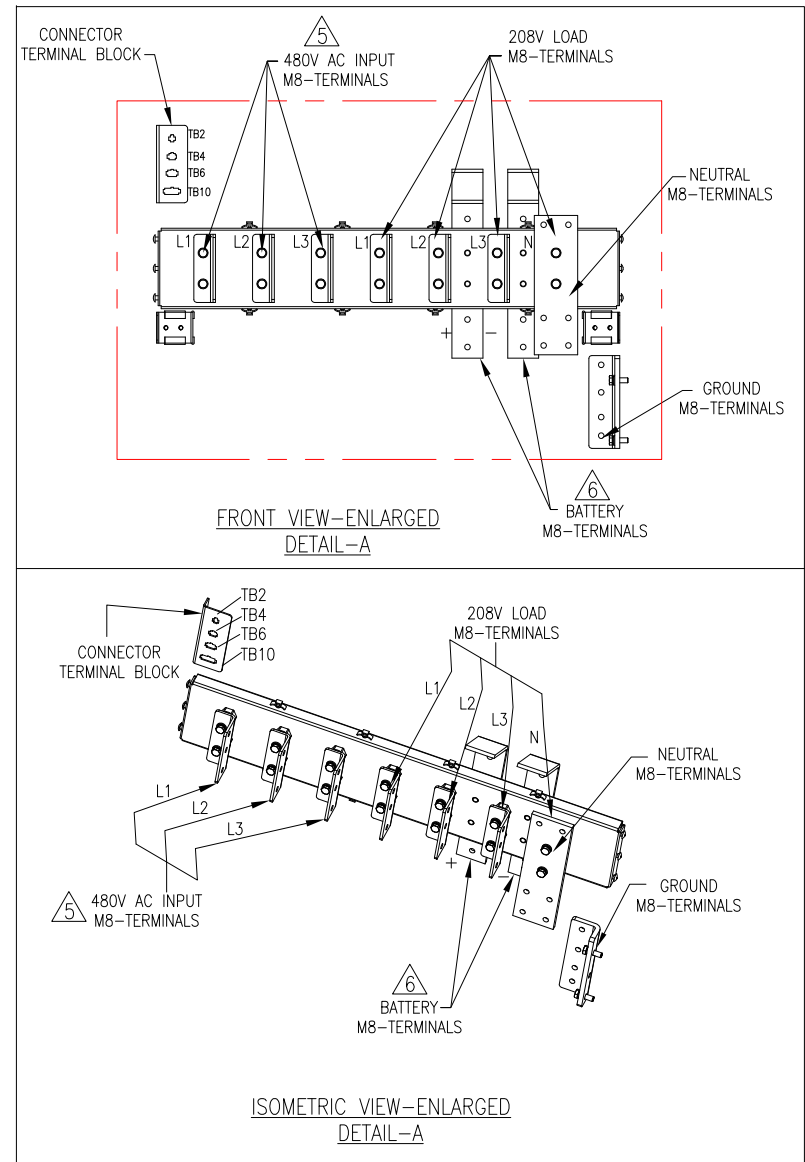
**DRAWN BY:** K.NAGENDRA 03-APR-20 **THIRD**

**ENGINEER:** PRASANNA T 03-APR-20 **ANGLE**

**APPROVED BY:** SURESH T 03-APR-20 **PROJECTION**



CIRCUIT BREAKER AND TRANSFORMER DETAILS					
kVA	CB RATINGS			CB PART NUMBER	OUTPUT TRANSFORMER <sup>9</sup>
	UIB	MBB	UOB		
150kW	250A	250A	250A	JJF36250CU31X	180kVA, 480-208V, D-Y, K1, %IZ:2.5-3.5%.



**NOTES:**

1. INSTALLATION SHALL COMPLY WITH ALL APPLICABLE NATIONAL, STATE AND LOCAL CODES.
2. REFER TO PRODUCT DOCUMENTATION FOR ADDITIONAL DETAILS PRIOR TO INSTALLATION AND SITE PREPARATION WORK.
3. ALL DIMENSIONS ARE IN INCHES [MILLIMETERS].
4. SOME STRUCTURAL DETAILS HAVE BEEN OMITTED FOR THE PURPOSE OF CLARITY.
5. INPUT IS 480V ONLY.
6. BATTERY CONNECTION IS FOR TOP ENTRY ONLY.
7. REFER TO MANUAL FOR BREAKER SETTINGS.
8. REFER TO SINGLE LINE AND WIRING DIAGRAM FOR INTERFACE DETAILS.
9. MAXIMUM INRUSH 10X NOMINAL INPUT CURRENT.

THIS DRAWING AND SPECIFICATIONS HEREIN ARE THE PROPERTY OF SCHNEIDER ELECTRIC AND SHALL NOT BE COPIED, REPRODUCED OR USED IN WHOLE OR IN PART, AS THE BASIS FOR THE MANUFACTURE OR SALE OF ITEMS WITHOUT WRITTEN PERMISSION FROM SCHNEIDER ELECTRIC. THIS DRAWING IS BASED UPON LATEST AVAILABLE INFORMATION AND IS SUBJECT TO CHANGE WITHOUT NOTICE.



**TITLE:** Galaxy VS MBP WITH OUTPUT TRANSFORMER-150kW  
 Input: 480V, 3PH, 60Hz  
 Output: 208V, 3PH+N, 60Hz  
 INTERNAL VIEWS-1

**DWG NO:** GVSBPOT150

**REV.** 0

**DRAWN BY:** K.NAGENDRA 03-APR-20

**THIRD**

**ENGINEER:** PRASANNA T 03-APR-20

**ANGLE**

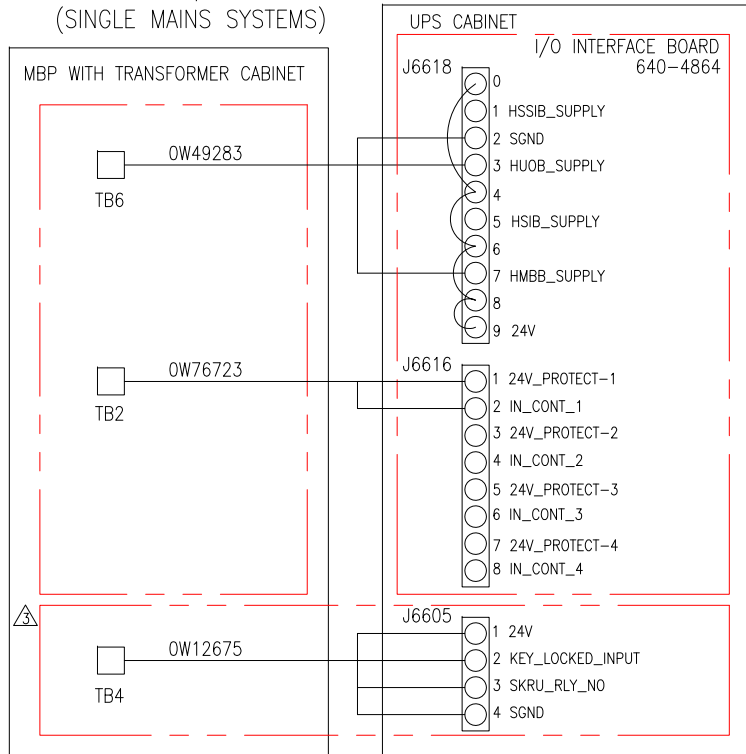
**APPROVED BY:** SURESH T 03-APR-20

**PROJECTION**

**PROJECT:** SUBMITTAL DRAWINGS **SHEET 3 OF 4**

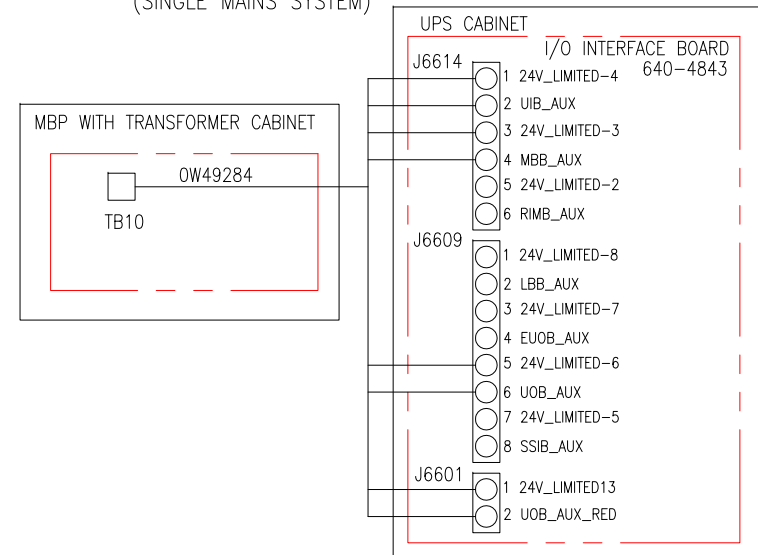
CONNECTION CLASS 2/SELV SIGNAL CABLE

(SINGLE MAINS SYSTEMS)

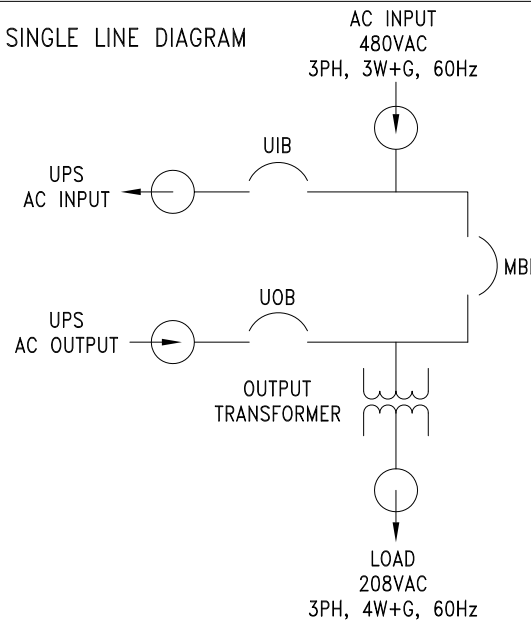


CONNECTION NON-CLASS 2/NON-SELV SIGNAL CABLE

(SINGLE MAINS SYSTEM)



SINGLE LINE DIAGRAM



NOTES:

1. INSTALLATION SHALL COMPLY WITH ALL APPLICABLE NATIONAL, STATE AND LOCAL CODES.
2. REFER TO PRODUCT DOCUMENTATION FOR ADDITIONAL DETAILS PRIOR TO INSTALLATION AND SITE PREPARATION WORK.

△3. APPLICABLE WHILE USING KIRKKEY INTERLOCK OPTION(GVS0PT007)

THIS DRAWING AND SPECIFICATIONS HEREIN ARE THE PROPERTY OF SCHNEIDER ELECTRIC AND SHALL NOT BE COPIED, REPRODUCED OR USED IN WHOLE OR IN PART, AS THE BASIS FOR THE MANUFACTURE OR SALE OF ITEMS WITHOUT WRITTEN PERMISSION FROM SCHNEIDER ELECTRIC. THIS DRAWING IS BASED UPON LATEST AVAILABLE INFORMATION AND IS SUBJECT TO CHANGE WITHOUT NOTICE.



TITLE: Galaxy VS  
MBP WITH OUTPUT TRANSFORMER-150kW  
Input: 480V, 3PH, 60Hz  
Output: 208V, 3PH+N, 60Hz  
CONNECTION AND CONTROL PANEL DETAILS

PROJECT: SUBMITTAL DRAWINGS SHEET 4 OF 4

DWG NO:	GVSBPOT150	REV.	0
DRAWN BY:	K.NAGENDRA	03-APR-20	THIRD
ENGINEER:	PRASANNA T	03-APR-20	ANGLE
APPROVED BY:	SURESH T	03-APR-20	PROJECTION