

NOTES:

- INSTALLATION SHALL COMPLY WITH ALL APPLICABLE NATIONAL, STATE AND LOCAL CODES.
- REFER TO PRODUCT INSTALLATION DOCUMENTATION FOR SITE PREPARATIONS.
- DRAWING DEPICTS POWER SYSTEM CONNECTIONS AND IS NOT REPRESENTATIVE OF PHYSICAL LAYOUT. REFER TO MECHANICAL DRAWINGS FOR EQUIPMENT LAYOUT.
- FINAL SELECTIONS ARE RESPONSIBILITY OF ENGINEER OF RECORDS BASED ON INSTALLED CONDITIONS AND SCC/SELECTIVE CO-ORDINATION/ARC-FLASH ANALYSIS.
- INPUT AC SOURCE TO BE 3 WIRE+PE. TN, TT AND IT POWER DISTRIBUTION SYSTEMS WITH NO EARTHED LINE CONDUCTORS ARE SUPPORTED.
- CABLE LUGS ARE PROVIDED BY OTHERS.
- BUS LINK APPLICABLE FOR SINGLE MAINS ONLY, TO BE REMOVED FOR DUAL MAINS APPLICATION.
- FOR UPS RATINGS REFER TO TABLE-1.
- MAXIMUM INPUT SHORT-CIRCUIT WITHSTAND: $I_{cw}=65kA$ RMS SYMMETRICAL.
- BATTERY TYPE: VRLA.
- THE INTERNAL MAINTENANCE BREAKER (IMB) SHOULD BE PAD LOCKED IN OPEN POSITION FOR THIS PARALLEL CONFIGURATION.
- CONTACT SCHNEIDER ELECTRIC FOR SWITCHGEAR RECOMMENDATIONS.
- FOR PARALLEL SYSTEMS, UPSTREAM CIRCUIT BREAKER INSTANTANEOUS OVERRIDE (II) VALUES MUST NOT BE SET HIGHER THAN 1250 A.
- FOR PARALLEL SYSTEMS WITH THREE OR MORE UPS'S OF RATING 20-120KW, A CIRCUIT BREAKER MUST BE INSTALLED ON THE OUTPUT OF EACH UPS. THE INSTANTANEOUS OVERRIDE (II) VALUES OF UNIT OUTPUT BREAKER (UOB) MUST NOT BE SET HIGHER THAN 1250 A.
- FOR PARALLEL SYSTEM WITH TWO OR MORE UPS'S OF RATING 150KW, A CIRCUIT BREAKER MUST BE INSTALLED ON THE OUTPUT OF EACH UPS. THE INSTANTANEOUS OVERRIDE (II) VALUES OF UNIT OUTPUT BREAKER (UOB) MUST NOT BE SET HIGHER THAN 1250 A.
- FOR SCALABLE UPS GVSUPS50K150HS, ALWAYS SIZE THE UPSTREAM PROTECTION FOR A UPS RATING OF 150 KW.

TABLE-1

GALAXY VS 20-150KW 380/400/415V-ACAPPLICABLE UPSs SKUs WITH RATINGS			
MAINS INPUT : 380/400/415V AC, 50Hz 3PH 4 WIRE+PE OUTPUT: 380/400/415V AC, 50Hz, 4 WIRE+PE			
SKU NUMBER	UPS RATING (kW)	APPLICABLE NUMBER OF BATTERY BLOCKS	NOMINAL DC VOLTAGE (12 V BATTERY)
GVSUPS20KHS / GVSUPS20KHINS	20	32 TO 48	32BLOCKS: +/-192 V 34BLOCKS: +/-204 V 36BLOCKS: +/-216 V 38BLOCKS: +/-228 V 40BLOCKS: +/-240 V 42BLOCKS: +/-252 V 44BLOCKS: +/-264 V 46BLOCKS: +/-276 V 48BLOCKS: +/-288 V
GVSUPS30KHS / GVSUPS30KHINS	30		
GVSUPS40KHS / GVSUPS40KHINS	40		
GVSUPS50KHS / GVSUPS50KHINS	50	40 TO 48	
GVSUPS60KHS / GVSUPS60KHINS	60	35 TO 48	
GVSUPS80KHS / GVSUPS80KHINS	80	32 TO 48	
GVSUPS100KHS / GVSUPS100KHINS	100	40 TO 48	
GVSUPS120KHS/ GVSUPS120KHINS	120		
GVSUPS150KHS/ GVSUPS150KHINS	150		
GVSUPS50K150HS	50kW EXPANDABLE TO 60/80/100/120/150kW	REFER TO RESPECTIVE EXPANDED RATING AS MENTIONED IN ABOVE ROWS	

THIS DRAWING AND SPECIFICATIONS HEREIN ARE THE PROPERTY OF SCHNEIDER ELECTRIC AND SHALL NOT BE COPIED, REPRODUCED OR USED IN WHOLE OR IN PART, AS THE BASIS FOR THE MANUFACTURE OR SALE OF ITEMS WITHOUT WRITTEN PERMISSION FROM SCHNEIDER ELECTRIC. THIS DRAWING IS BASED UPON LATEST AVAILABLE INFORMATION AND IS SUBJECT TO CHANGE WITHOUT NOTICE.

Schneider Electric

TITLE: GALAXY VS
Input: 380/400/415V AC, 3PH, 50Hz SINGLE FEED
Output: 380/400/415V AC, 3PH, 50Hz 20-150kW
4 MOD UPS w COMMON BATTERY BANK & SBC
SYSTEM ONE LINE DIAGRAM

PROJECT: DRAWINGS SHEET 1 OF 2

DWG NO: GVS20K150HS4CB-SD

DRAWN BY: BALA 01-SEP-21

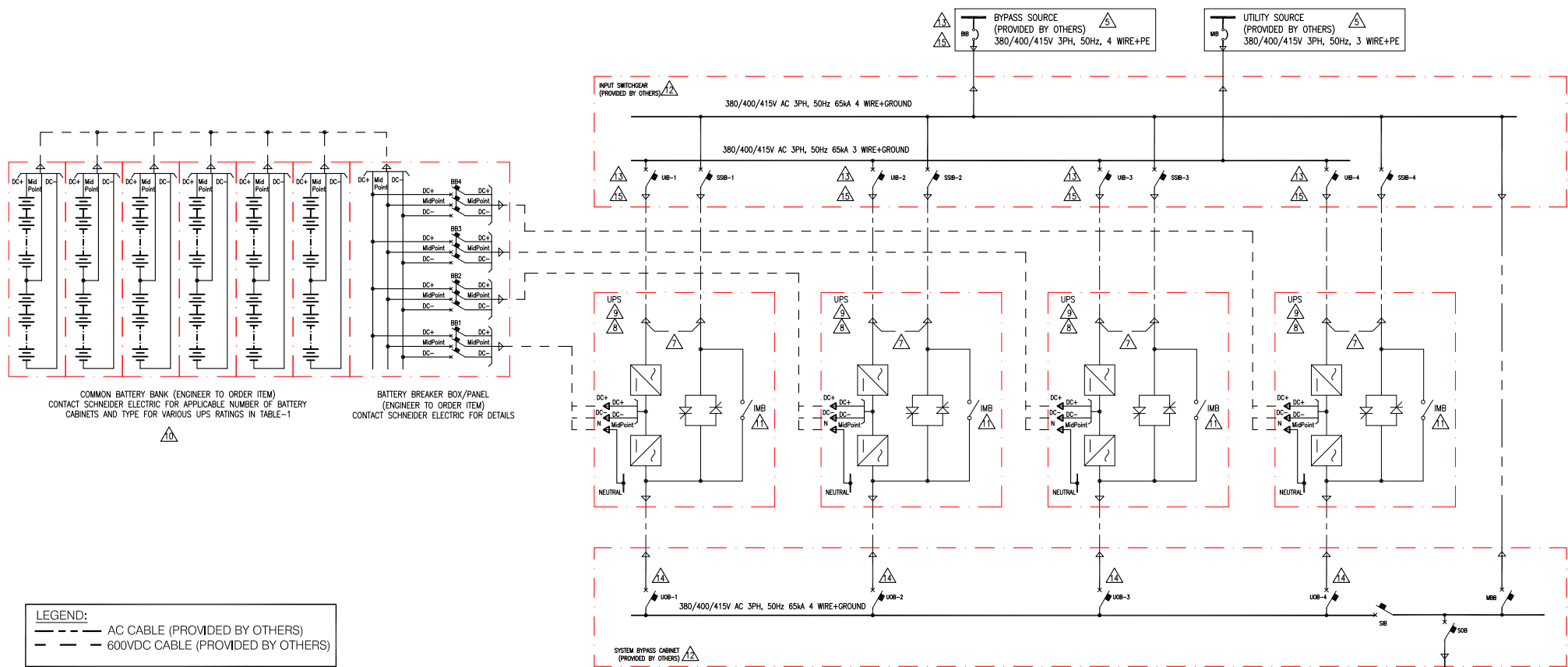
ENGINEER: H N / C N / C A 02-SEP-21

APPROVED BY: J L / C A 02-SEP-21

REV. 1

ANGLE PROJECTION

N. A



NOTES:

1. INSTALLATION SHALL COMPLY WITH ALL APPLICABLE NATIONAL, STATE AND LOCAL CODES.
2. REFER TO PRODUCT INSTALLATION DOCUMENTATION FOR SITE PREPARATIONS.
3. DRAWING DEPICTS POWER SYSTEM CONNECTIONS AND IS NOT REPRESENTATIVE OF PHYSICAL LAYOUT. REFER TO MECHANICAL DRAWINGS FOR EQUIPMENT LAYOUT.
4. FINAL SELECTIONS ARE RESPONSIBILITY OF ENGINEER OF RECORDS BASED ON INSTALLED CONDITIONS AND SCC/SELECTIVE CO-ORDINATION/ARC-FLASH ANALYSIS.
- Δ 5. INPUT AC SOURCE TO BE 3 WIRE+PE. TN, TT AND IT POWER DISTRIBUTION SYSTEMS WITH NO EARTHED LINE CONDUCTORS ARE SUPPORTED.
6. CABLE LUGS ARE PROVIDED BY OTHERS.
- Δ 7. BUS LINK APPLICABLE FOR SINGLE MAINS ONLY, TO BE REMOVED FOR DUAL MAINS APPLICATION.
- Δ 8. FOR UPS RATINGS REFER TO TABLE-1.
- Δ 9. MAXIMUM INPUT SHORT-CIRCUIT WITHSTAND: $I_{cw}=65\text{ka}$ RMS SYMMETRICAL.
- Δ 10. BATTERY TYPE: VRLA.
- Δ 11. THE INTERNAL MAINTENANCE BREAKER (IMB) SHOULD BE PAD LOCKED IN OPEN POSITION FOR THIS PARALLEL CONFIGURATION.
- Δ 12. CONTACT SCHNEIDER ELECTRIC FOR SWITCHGEAR RECOMMENDATIONS.
- Δ 13. FOR PARALLEL SYSTEMS, UPSTREAM CIRCUIT BREAKER INSTANTANEOUS OVERRIDE (II) VALUES MUST NOT BE SET HIGHER THAN 1250 A.
- Δ 14. FOR PARALLEL SYSTEMS WITH THREE OR MORE UPS'S OF RATING 20-120KW, A CIRCUIT BREAKER MUST BE INSTALLED ON THE OUTPUT OF EACH UPS. THE INSTANTANEOUS OVERRIDE (II) VALUES OF UNIT OUTPUT BREAKER (UOB) MUST NOT BE SET HIGHER THAN 1250 A.
- Δ 15. FOR SCALABLE UPS GVSUPS50K150HS, ALWAYS SIZE THE UPSTREAM PROTECTION FOR A UPS RATING OF 150 KW.

TABLE-2

GALAXY VS 20-150KW 380/400/415V-ACAPPLICABLE UPSs SKUs WITH RATINGS			
MAINS INPUT : 380/400/415V AC, 50Hz 3PH 3 WIRE+PE BYPASS INPUT: 380/400/415V AC, 50HZ 3PH, 4 WIRE+PE OUTPUT: 380/400/415V AC, 50Hz, 4 WIRE+PE			
SKU NUMBER	UPS RATING (kW)	APPLICABLE NUMBER OF BATTERY BLOCKS	NOMINAL DC VOLTAGE (12 V BATTERY)
GVSUPS20KHS / GVSUPS20KHINS	20	32 TO 48	32BLOCKS: +/-192 V 34BLOCKS: +/-204 V 36BLOCKS: +/-216 V 38BLOCKS: +/-228 V 40BLOCKS: +/-240 V 42BLOCKS: +/-252 V 44BLOCKS: +/-264 V 46BLOCKS: +/-276 V 48BLOCKS: +/-288 V
GVSUPS30KHS / GVSUPS30KHINS	30		
GVSUPS40KHS / GVSUPS40KHINS	40		
GVSUPS50KHS / GVSUPS50KHINS	50	40 TO 48	
GVSUPS60KHS / GVSUPS60KHINS	60	35 TO 48	
GVSUPS80KHS / GVSUPS80KHINS	80	32 TO 48	
GVSUPS100KHS / GVSUPS100KHINS	100	40 TO 48	32BLOCKS: +/-192 V 34BLOCKS: +/-204 V 36BLOCKS: +/-216 V 38BLOCKS: +/-228 V 40BLOCKS: +/-240 V 42BLOCKS: +/-252 V 44BLOCKS: +/-264 V 46BLOCKS: +/-276 V 48BLOCKS: +/-288 V
GVSUPS120KHS/ GVSUPS120KHINS	120		
GVSUPS150KHS/ GVSUPS150KHINS	150		
GVSUPS50K150HS	50kW EXPANDABLE TO 60/80/100/120/150KW	REFER TO RESPECTIVE EXPANDED RATING AS MENTIONED IN ABOVE ROWS	

THIS DRAWING AND SPECIFICATIONS HEREIN ARE THE PROPERTY OF SCHNEIDER ELECTRIC AND SHALL NOT BE COPIED, REPRODUCED OR USED IN WHOLE OR IN PART, AS THE BASIS FOR THE MANUFACTURE OR SALE OF ITEMS WITHOUT WRITTEN PERMISSION FROM SCHNEIDER ELECTRIC. THIS DRAWING IS BASED UPON LATEST AVAILABLE INFORMATION AND IS SUBJECT TO CHANGE WITHOUT NOTICE.

Schneider Electric

TITLE: GALAXY VS
Input:380/400/415V AC,3PH,50Hz DUAL FEED
Output: 380/400/415V AC,3PH,50Hz 20-150kW
4 MOD UPS w COMMON BATTERY BANK & SBC
SYSTEM ONE LINE DIAGRAM
PROJECT: DRAWINGS **SHEET** 2 OF 2

DWG NO: GVS20K150HS4CB-SD
DRAWN BY: BALA 01-SEP-21
ENGINEER: H N / C N / C A 02-SEP-21
APPROVED BY: J L / C A 02-SEP-21

REV. 1
ANGLE
PROJECTION
N. A