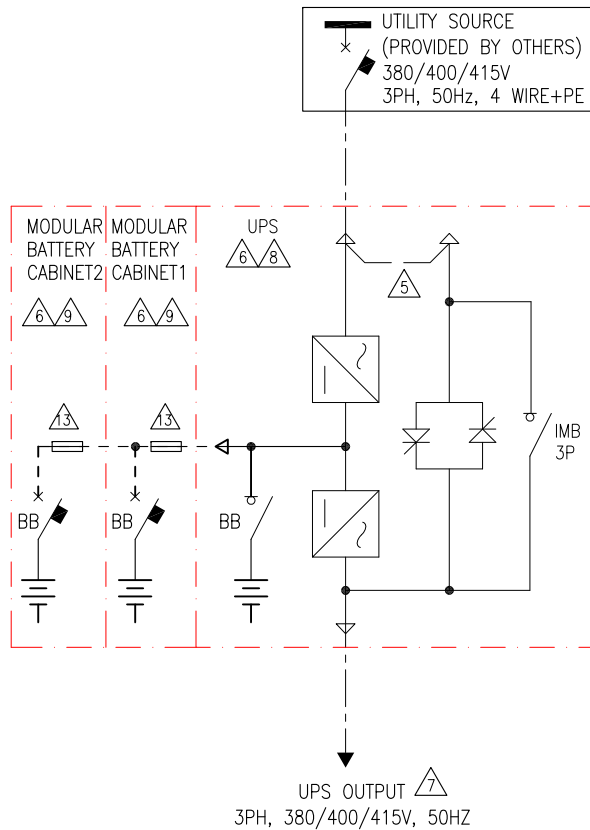
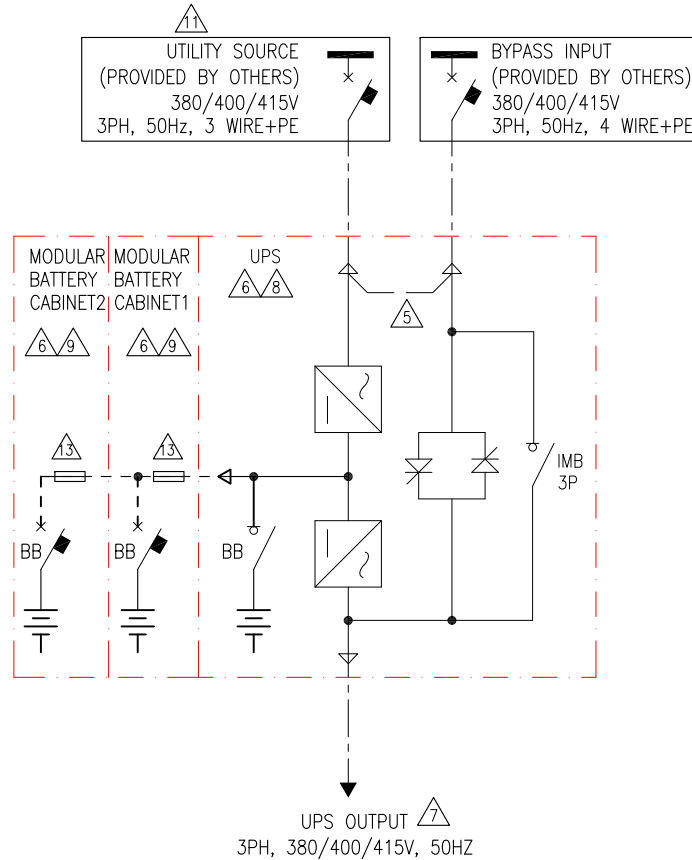


# 1 MOD UPS WITH BATT SOLUTION

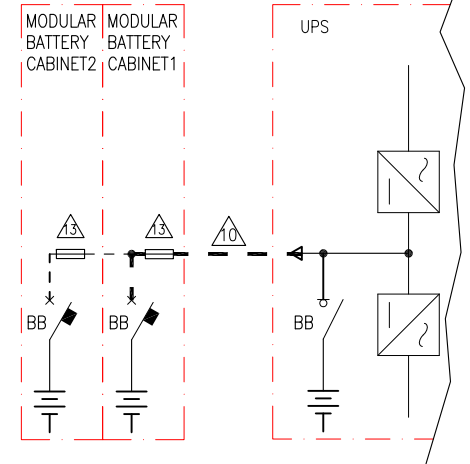
## SINGLE MAINS



## DUAL MAINS



## REMOTE BATTERY-TYPICAL (REST OF CONNECTIONS SIMILAR TO ADJACENT BATTERY EXCEPT BELOW)



### NOTES:

1. INSTALLATION SHALL COMPLY WITH ALL APPLICABLE NATIONAL, STATE AND LOCAL CODES.
2. REFER TO PRODUCT INSTALLATION DOCUMENTATION FOR SITE PREPARATIONS.
3. DRAWING DEPICTS POWER SYSTEM CONNECTIONS AND IS NOT REPRESENTATIVE OF PHYSICAL LAYOUT. REFER TO MECHANICAL DRAWINGS FOR EQUIPMENT LAYOUT.
4. FINAL SELECTIONS ARE RESPONSIBILITY OF ENGINEER OF RECORDS BASED ON INSTALLED CONDITIONS AND SCC/SELECTIVE CO-ORDINATION/ARC-FLASH ANALYSIS.
- △5. BUS LINK APPLICABLE FOR SINGLE MAINS ONLY, TO BE REMOVED FOR DUAL MAINS INSTALLATION.
- △6. FOR TECHNICAL SPECIFICATIONS, RECOMMENDATIONS AND SKU NUMBERS REFER TO SHEET-6.
- △7. THE NUMBER OF OUTPUT WIRES MUST MATCH THE NUMBER OF INPUT WIRES IN SINGLE MAINS OR BYPASS WIRES FOR DUAL MAINS.
- △8. MAXIMUM INPUT SHORT-CIRCUIT WITHSTAND:  $I_{cw}=65kA$  RMS SYMMETRICAL.
- △9. APPLICABLE FOR ALL UPSs EXCEPT GVSUPS10KB2HS & GVSUPS20KB2HS. TWO CABINETS SHOWN. MAXIMUM OF FOUR BATTERY CABINETS CAN BE BAYED WITH THE UPS. FOR RUNTIME DETAILS REFER TO BATTERY CABINET INSTALLATION MANUALS OR CONTACT SCHNEIDER ELECTRIC.
- △10. FOR OPTIONAL POWER AND SIGNAL INTERFACE CABLE DETAILS CONTACT SCHNEIDER ELECTRIC.
- △11. TN AND TT POWER DISTRIBUTION SYSTEMS ARE SUPPORTED.  
CORNER (LINE) GROUNDING IS NOT SUPPORTED.  
ONLY FOR DUAL MAINS SYSTEM WITH UPSTREAM 4 POLE BREAKERS:  
INSTALL AN N CONNECTION WITH THE INPUT CABLES.
12. CABLE LUGS ARE PROVIDED BY OTHERS EXCEPT FOR ADJACENT BATTERY CABINET INSTALLATION.
- △13. REFER TO GVSMDBC6 DRAWING FOR ADDITIONAL DETAILS.

THIS DRAWING AND SPECIFICATIONS HEREIN ARE THE PROPERTY OF SCHNEIDER ELECTRIC AND SHALL NOT BE COPIED, REPRODUCED OR USED IN WHOLE OR IN PART, AS THE BASIS FOR THE MANUFACTURE OR SALE OF ITEMS WITHOUT WRITTEN PERMISSION FROM SCHNEIDER ELECTRIC. THIS DRAWING IS BASED UPON LATEST AVAILABLE INFORMATION AND IS SUBJECT TO CHANGE WITHOUT NOTICE.

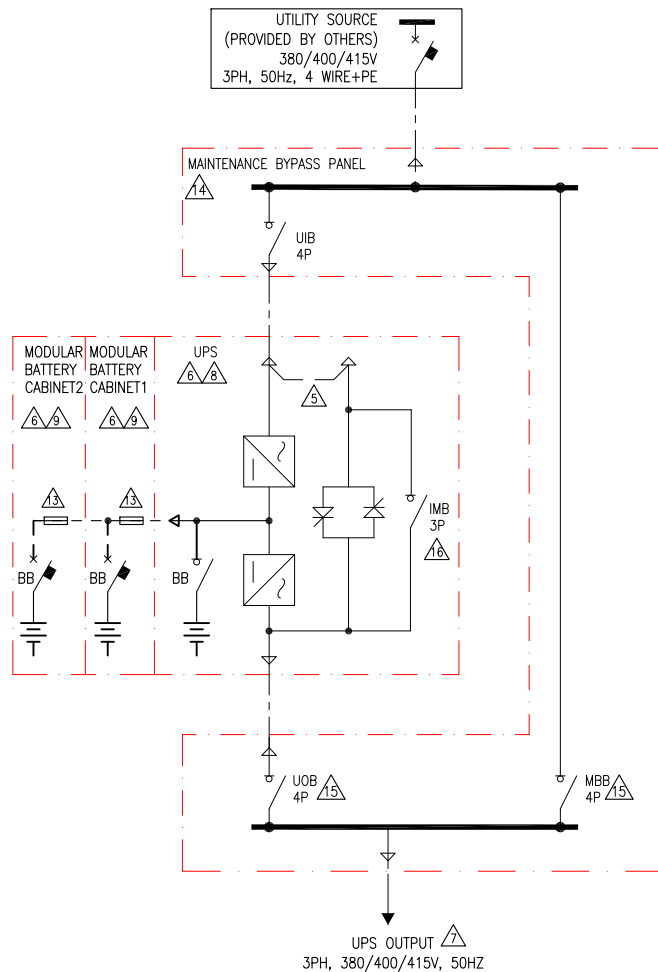
**Schneider Electric**

TITLE: GALAXY VS  
Input: 380/400/415V AC, 3PH, 50Hz SINGLE/DUAL FEED  
Output: 380/400/415V AC, 3PH, 50Hz 10-50kW  
1 MOD UPS WITH BATTERY SOLUTION  
SYSTEM ONE LINE DIAGRAM  
PROJECT: DRAWINGS SHEET 1 OF 6

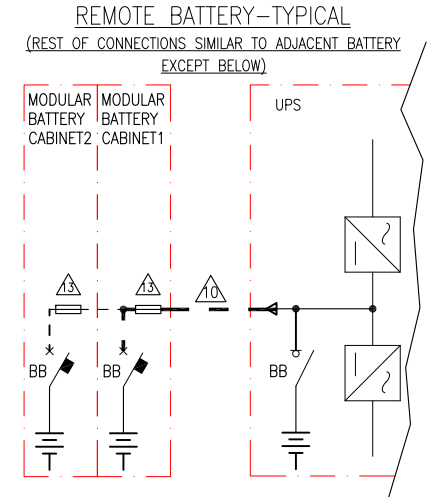
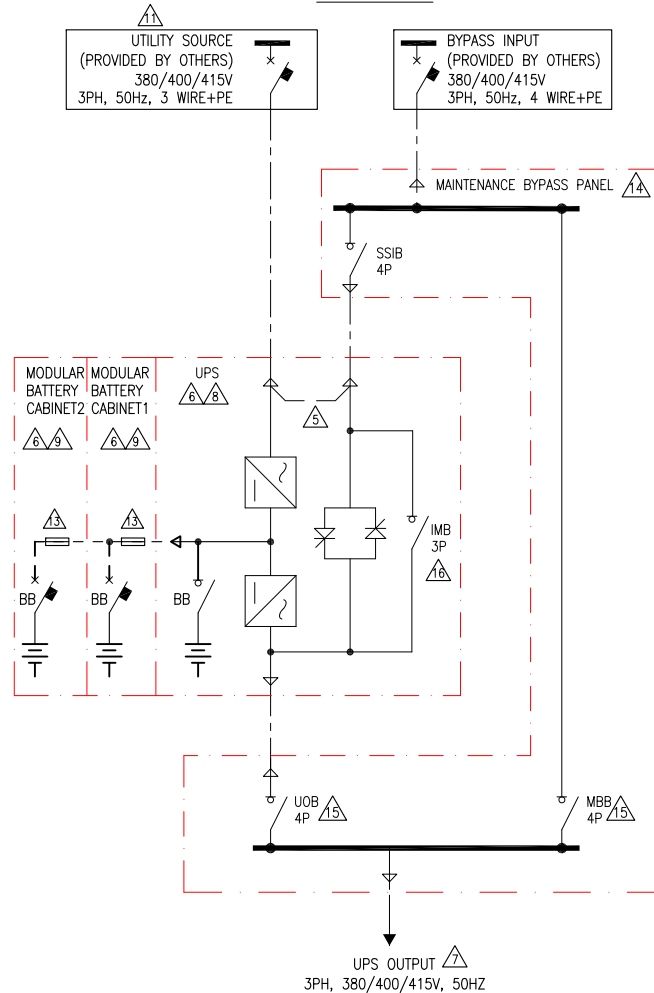
DWG NO: GVS10K50HSA10-SD REV. 0  
DRAWN BY: BALA 24-SEP-19 ANGLE  
ENGINEER: S A 25-OCT-19 PROJECTION  
APPROVED BY: C B 25-OCT-19 N.A.

# 1 MOD UPS WITH MAINTENANCE BYPASS PANEL AND BATT SOLUTION

## SINGLE MAINS



## DUAL MAINS



### NOTES:

1. INSTALLATION SHALL COMPLY WITH ALL APPLICABLE NATIONAL, STATE AND LOCAL CODES.
2. REFER TO PRODUCT INSTALLATION DOCUMENTATION FOR SITE PREPARATIONS.
3. DRAWING DEPICTS POWER SYSTEM CONNECTIONS AND IS NOT REPRESENTATIVE OF PHYSICAL LAYOUT. REFER TO MECHANICAL DRAWINGS FOR EQUIPMENT LAYOUT.
4. FINAL SELECTIONS ARE RESPONSIBILITY OF ENGINEER OF RECORDS BASED ON INSTALLED CONDITIONS AND SCC/SELECTIVE CO-ORDINATION/ARC-FLASH ANALYSIS.
5. BUS LINK APPLICABLE FOR SINGLE MAINS ONLY, TO BE REMOVED FOR DUAL MAINS INSTALLATION.
6. FOR TECHNICAL SPECIFICATIONS, RECOMMENDATIONS AND SKU NUMBERS REFER TO SHEET-6.
7. THE NUMBER OF OUTPUT WIRES MUST MATCH THE NUMBER OF INPUT WIRES IN SINGLE MAINS OR BYPASS WIRES FOR DUAL MAINS.
8. MAXIMUM INPUT SHORT-CIRCUIT WITHSTAND:  $I_{cw}=65\text{ka}$  RMS SYMMETRICAL.
9. APPLICABLE FOR ALL UPSs EXCEPT GVSUPS10KB2HS & GVSUPS20KB2HS. TWO CABINETS SHOWN. MAXIMUM OF FOUR BATTERY CABINETS CAN BE BAYED WITH THE UPS. FOR RUNTIME DETAILS REFER TO BATTERY CABINET INSTALLATION MANUALS OR CONTACT SCHNEIDER ELECTRIC.
10. FOR OPTIONAL POWER AND SIGNAL INTERFACE CABLE DETAILS CONTACT SCHNEIDER ELECTRIC.
11. TN AND TT POWER DISTRIBUTION SYSTEMS ARE SUPPORTED. CORNER (LINE) GROUNDING IS NOT SUPPORTED. ONLY FOR DUAL MAINS SYSTEM WITH UPSTREAM 4 POLE BREAKERS: INSTALL AN N CONNECTION WITH THE INPUT CABLES.
12. CABLE LUGS ARE PROVIDED BY OTHERS EXCEPT FOR ADJACENT BATTERY CABINET INSTALLATION.
13. REFER TO GVSMODBC6 DRAWING FOR ADDITIONAL DETAILS.
14. MAXIMUM INPUT SHORT-CIRCUIT WITHSTAND:  $I_{cw}=10\text{ka}$  RMS SYMMETRICAL.
15. BOTH MBB AND UOB NEUTRAL ARE CONNECTED WITH PRE-INSTALLED JUMPERS.
16. THE INTERNAL MAINTENANCE BREAKER (IMB) MUST BE PADLOCKED IN OPEN POSITION.

THIS DRAWING AND SPECIFICATIONS HEREIN ARE THE PROPERTY OF SCHNEIDER ELECTRIC AND SHALL NOT BE COPIED, REPRODUCED OR USED IN WHOLE OR IN PART, AS THE BASIS FOR THE MANUFACTURE OR SALE OF ITEMS WITHOUT WRITTEN PERMISSION FROM SCHNEIDER ELECTRIC. THIS DRAWING IS BASED UPON LATEST AVAILABLE INFORMATION AND IS SUBJECT TO CHANGE WITHOUT NOTICE.

**Schneider Electric**

**TITLE:** GALAXY VS  
Input: 380/400/415V AC, 3PH, 50Hz SINGLE/DUAL FEED  
Output: 380/400/415V AC, 3PH, 50Hz 10-50kW  
1 MOD UPS WITH BATTERY AND SINGLE UNIT MBP  
SYSTEM ONE LINE DIAGRAM

**PROJECT:** DRAWINGS **SHEET** 2 OF 6

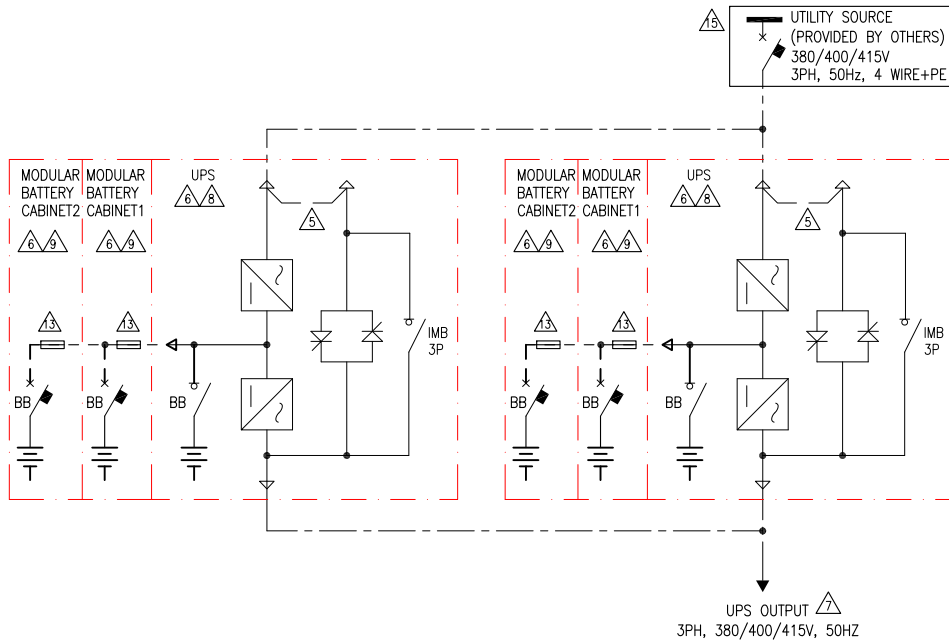
<b>DWG NO:</b>	GVS10K50HSA10-SD	<b>REV.</b>	0
<b>DRAWN BY:</b>	BALA	24-SEP-19	ANGLE
<b>ENGINEER:</b>	S A	25-OCT-19	PROJECTION
<b>APPROVED BY:</b>	C B	25-OCT-19	N. A

### LEGEND:

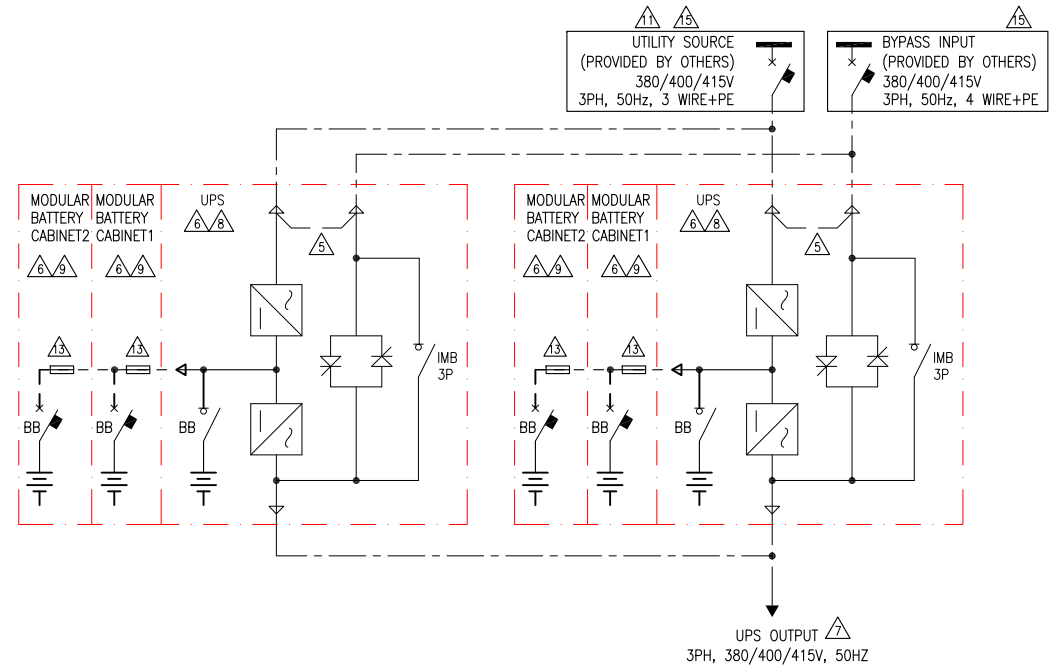
- AC CABLE (PROVIDED BY OTHERS)
- 600V DC CABLE (PART OF MODULAR BATTERY CABINET)
- 600V DC CABLE (PROVIDED BY OTHERS)

# SIMPLIFIED 1+1 PARALLEL SYSTEM WITHOUT MAINTENANCE BYPASS PANEL 14

## SINGLE MAINS



## DUAL MAINS



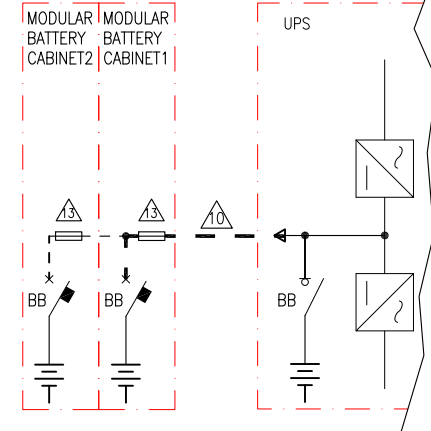
LEGEND:	
---	AC CABLE (PROVIDED BY OTHERS)
----	600V DC CABLE (PART OF MODULAR BATTERY CABINET)
----	600V DC CABLE (PROVIDED BY OTHERS)

### NOTES:

1. INSTALLATION SHALL COMPLY WITH ALL APPLICABLE NATIONAL, STATE AND LOCAL CODES.
2. REFER TO PRODUCT INSTALLATION DOCUMENTATION FOR SITE PREPARATIONS.
3. DRAWING DEPICTS POWER SYSTEM CONNECTIONS AND IS NOT REPRESENTATIVE OF PHYSICAL LAYOUT. REFER TO MECHANICAL DRAWINGS FOR EQUIPMENT LAYOUT.
4. FINAL SELECTIONS ARE RESPONSIBILITY OF ENGINEER OF RECORDS BASED ON INSTALLED CONDITIONS AND SCC/SELECTIVE CO-ORDINATION/ARC-FLASH ANALYSIS.
- △5. BUS LINK APPLICABLE FOR SINGLE MAINS ONLY, TO BE REMOVED FOR DUAL MAINS INSTALLATION.
- △6. FOR TECHNICAL SPECIFICATIONS, RECOMMENDATIONS AND SKU NUMBERS REFER TO SHEET-6.
- △7. THE NUMBER OF OUTPUT WIRES MUST MATCH THE NUMBER OF INPUT WIRES IN SINGLE MAINS OR BYPASS WIRES FOR DUAL MAINS.
- △8. MAXIMUM INPUT SHORT-CIRCUIT WITHSTAND:  $I_{cw}=65kA$  RMS SYMMETRICAL.
- △9. APPLICABLE FOR ALL UPSs EXCEPT GVSUPS10KB2HS & GVSUPS20KB2HS. TWO CABINETS SHOWN. MAXIMUM OF FOUR BATTERY CABINETS CAN BE BAYED WITH THE UPS. FOR RUNTIME DETAILS REFER TO BATTERY CABINET INSTALLATION MANUALS OR CONTACT SCHNEIDER ELECTRIC.
- △10. FOR OPTIONAL POWER AND SIGNAL INTERFACE CABLE DETAILS CONTACT SCHNEIDER ELECTRIC.
- △11. TN AND TT POWER DISTRIBUTION SYSTEMS ARE SUPPORTED.  
CORNER (LINE) GROUNDING IS NOT SUPPORTED.  
ONLY FOR DUAL MAINS SYSTEM WITH UPSTREAM 4 POLE BREAKERS:  
INSTALL AN N CONNECTION WITH THE INPUT CABLES.
12. CABLE LUGS ARE PROVIDED BY OTHERS EXCEPT FOR ADJACENT BATTERY CABINET INSTALLATION.
- △13. REFER TO GVSMOBC6 DRAWING FOR ADDITIONAL DETAILS.
- △14. THIS DRAWING IS NOT APPLICABLE FOR BELOW UPS SKU#s.  
GVSUPS10KB2HS, GVSUPS20KB2HS.
- △15. FOR PARALLEL SYSTEMS, UPSTREAM CIRCUIT BREAKER INSTANTANEOUS OVERRIDE (II) VALUES MUST NOT BE SET HIGHER THAN 1250 A.

## REMOTE BATTERY-TYPICAL

(REST OF CONNECTIONS SIMILAR TO ADJACENT BATTERY EXCEPT BELOW)



THIS DRAWING AND SPECIFICATIONS HEREIN ARE THE PROPERTY OF SCHNEIDER ELECTRIC AND SHALL NOT BE COPIED, REPRODUCED OR USED IN WHOLE OR IN PART, AS THE BASIS FOR THE MANUFACTURE OR SALE OF ITEMS WITHOUT WRITTEN PERMISSION FROM SCHNEIDER ELECTRIC. THIS DRAWING IS BASED UPON LATEST AVAILABLE INFORMATION AND IS SUBJECT TO CHANGE WITHOUT NOTICE.

**Schneider Electric**

TITLE: GALAXY VS  
Input: 380/400/415V AC, 3PH, 50Hz SINGLE/DUAL FEED  
Output: 380/400/415V AC, 3PH, 50Hz 10-50kW  
1+1 SIMPLIFIED PARALLEL UPS WITH BATTERY  
SYSTEM ONE LINE DIAGRAM

PROJECT: DRAWINGS SHEET 3 OF 6

DWG NO: GVS10K50HSA10-SD

DRAWN BY: BALA 01-SEP-21

ENGINEER: S A / C A 02-SEP-21

APPROVED BY: C B / C A 02-SEP-21

REV. 1

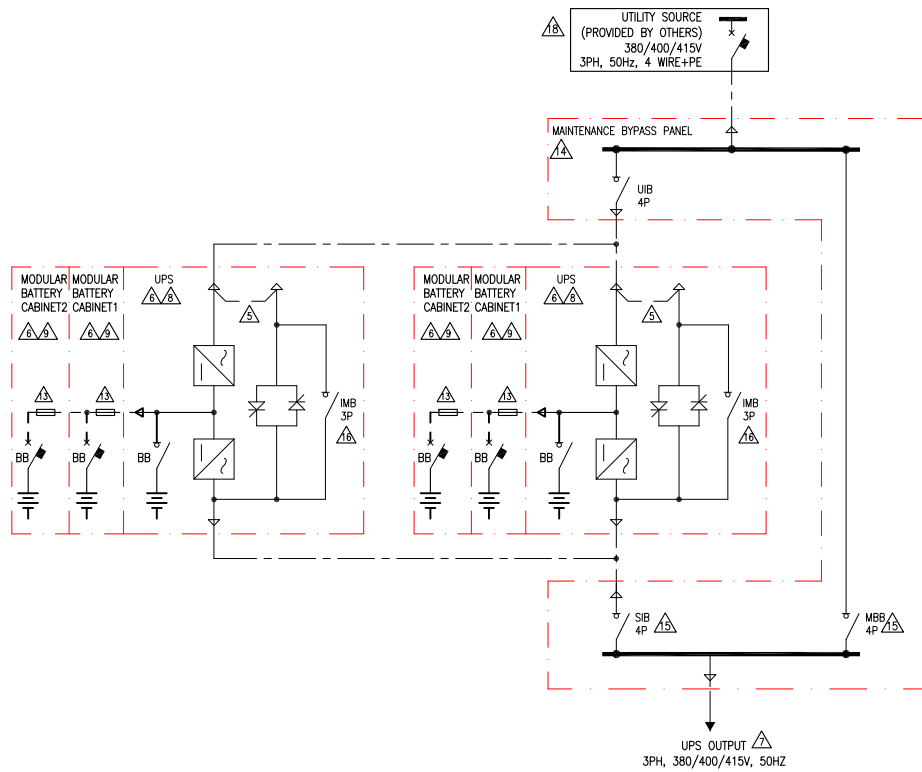
ANGLE

PROJECTION

N. A

# SIMPLIFIED 1+1 PARALLEL SYSTEM WITH MAINTENANCE BYPASS PANEL

## SINGLE MAINS



### LEGEND:

- AC CABLE (PROVIDED BY OTHERS)
- 600V DC CABLE (PART OF MODULAR BATTERY CABINET)
- 600V DC CABLE (PROVIDED BY OTHERS)

### NOTES:

- INSTALLATION SHALL COMPLY WITH ALL APPLICABLE NATIONAL, STATE AND LOCAL CODES.
- REFER TO PRODUCT INSTALLATION DOCUMENTATION FOR SITE PREPARATIONS.
- DRAWING DEPICTS POWER SYSTEM CONNECTIONS AND IS NOT REPRESENTATIVE OF PHYSICAL LAYOUT. REFER TO MECHANICAL DRAWINGS FOR EQUIPMENT LAYOUT.
- FINAL SELECTIONS ARE RESPONSIBILITY OF ENGINEER OF RECORDS BASED ON INSTALLED CONDITIONS AND SCC/SELECTIVE CO-ORDINATION/ARC-FLASH ANALYSIS.
- BUS LINK APPLICABLE FOR SINGLE MAINS ONLY, TO BE REMOVED FOR DUAL MAINS INSTALLATION.
- FOR TECHNICAL SPECIFICATIONS, RECOMMENDATIONS AND SKU NUMBERS REFER TO SHEET-6.
- THE NUMBER OF OUTPUT WIRES MUST MATCH THE NUMBER OF INPUT WIRES IN SINGLE MAINS OR BYPASS WIRES FOR DUAL MAINS.
- MAXIMUM INPUT SHORT-CIRCUIT WITHSTAND:  $I_{cw}=65\text{ka}$  RMS SYMMETRICAL.
- APPLICABLE FOR ALL UPSs EXCEPT GVSUPS10KB2HS & GVSUPS20KB2HS. TWO CABINETS SHOWN. MAXIMUM OF FOUR BATTERY CABINETS CAN BE BAYED WITH THE UPS.
- FOR RUNTIME DETAILS REFER TO BATTERY CABINET INSTALLATION MANUALS OR CONTACT SCHNEIDER ELECTRIC.
- FOR OPTIONAL POWER AND SIGNAL INTERFACE CABLE DETAILS CONTACT SCHNEIDER ELECTRIC.
- TN AND TT POWER DISTRIBUTION SYSTEMS ARE SUPPORTED. CORNER (LINE) GROUNDING IS NOT SUPPORTED.
- ONLY FOR DUAL MAINS SYSTEM WITH UPSTREAM 4 POLE BREAKERS: INSTALL AN N CONNECTION WITH THE INPUT CABLES.
- CABLE LUGS ARE PROVIDED BY OTHERS EXCEPT FOR ADJACENT BATTERY CABINET INSTALLATION.
- REFER TO GVSMODBC6 DRAWING FOR ADDITIONAL DETAILS.
- MAXIMUM INPUT SHORT-CIRCUIT WITHSTAND:  $I_{cw}=10\text{ka}$  RMS SYMMETRICAL.
- BOTH MBB AND UOB NEUTRAL ARE CONNECTED WITH PRE-INSTALLED JUMPERS.
- THE INTERNAL MAINTENANCE BREAKER (IMB) MUST BE PADLOCKED IN OPEN POSITION.
- THIS DRAWING IS NOT APPLICABLE FOR BELOW UPS SKU#s.  
GVSUPS10KB2HS, GVSUPS20KB2HS.
- FOR PARALLEL SYSTEMS, UPSTREAM CIRCUIT BREAKER INSTANTANEOUS OVERRIDE (II) VALUES MUST NOT BE SET HIGHER THAN 1250 A.

THIS DRAWING AND SPECIFICATIONS HEREIN ARE THE PROPERTY OF SCHNEIDER ELECTRIC AND SHALL NOT BE COPIED, REPRODUCED OR USED IN WHOLE OR IN PART, AS THE BASIS FOR THE MANUFACTURE OR SALE OF ITEMS WITHOUT WRITTEN PERMISSION FROM SCHNEIDER ELECTRIC. THIS DRAWING IS BASED UPON LATEST AVAILABLE INFORMATION AND IS SUBJECT TO CHANGE WITHOUT NOTICE.

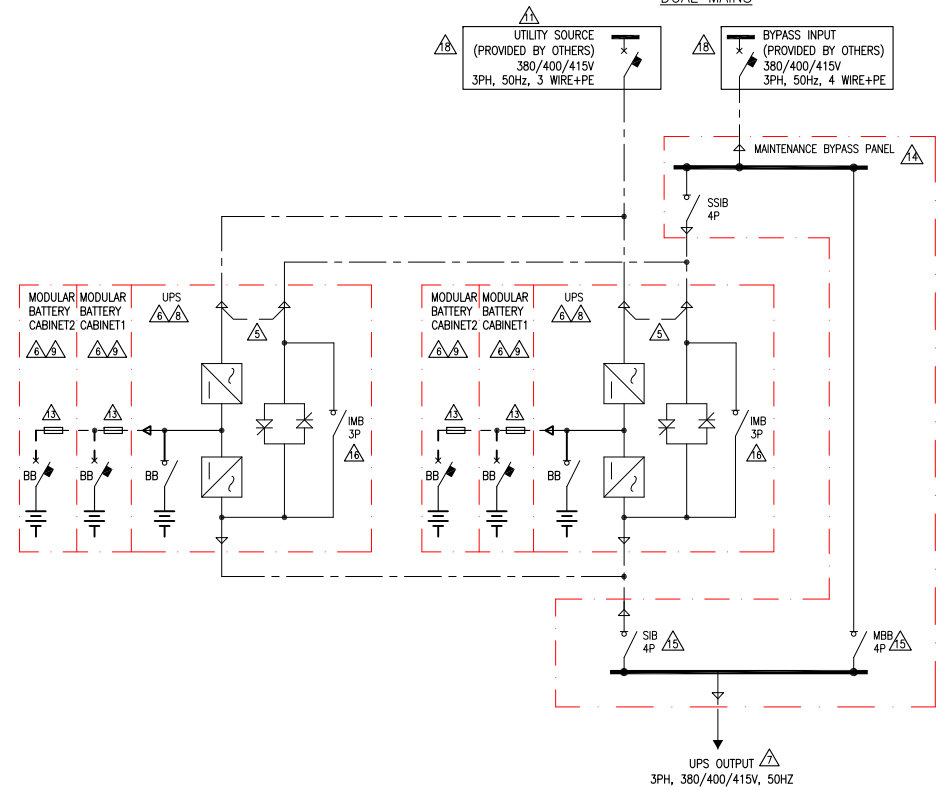
**Schneider Electric**

**TITLE:** GALAXY VS  
Input: 380/400/415V AC, 3PH, 50Hz SINGLE/DUAL FEED  
Output: 380/400/415V AC, 3PH, 50Hz 10-50kW  
1+1 SIMPLIFIED PARALLEL UPS WITH BATTERY  
SYSTEM ONE LINE DIAGRAM  
**PROJECT:** DRAWINGS **SHEET** 4 OF 6

**DWG NO:** GVS10K50HSA10-SD  
**DRAWN BY:** BALA 01-SEP-21  
**ENGINEER:** S A / C A 02-SEP-21  
**APPROVED BY:** C B / C A 02-SEP-21

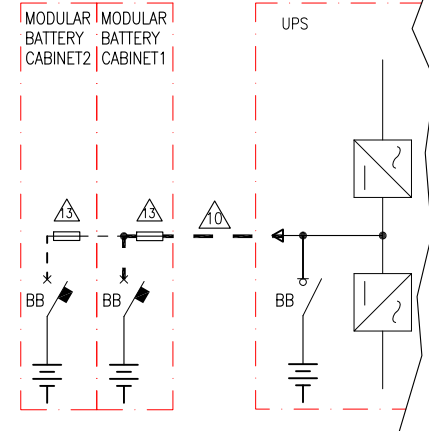
**REV.** 1  
**ANGLE**  
**PROJECTION**  
**N.A.**

## DUAL MAINS

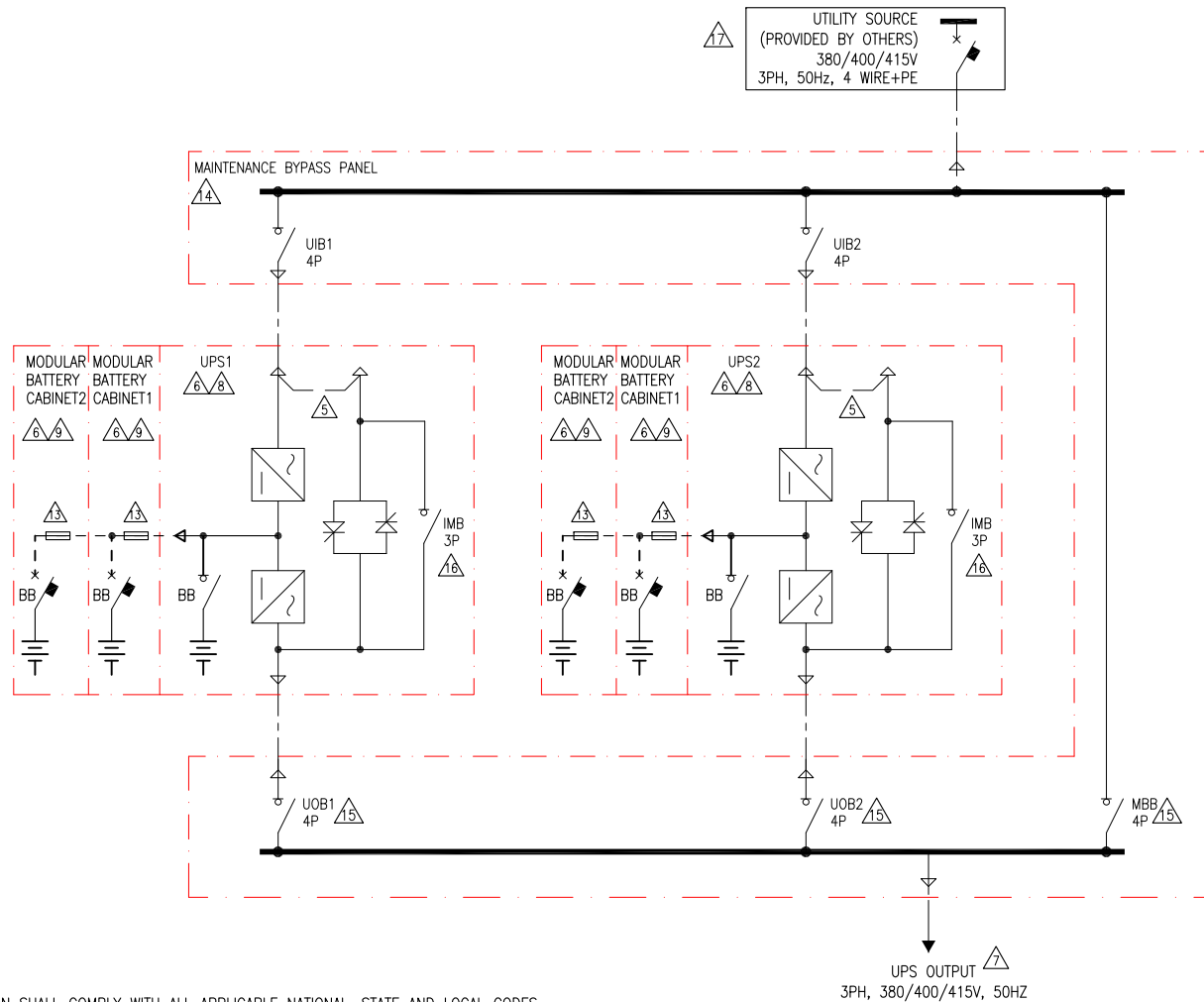


### REMOTE BATTERY-TYPICAL

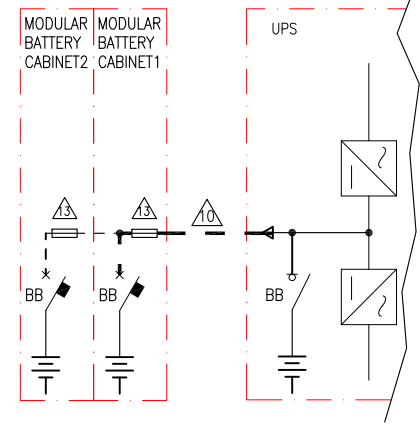
(REST OF CONNECTIONS SIMILAR TO ADJACENT BATTERY EXCEPT BELOW)



## 2 MOD (N+1)/ CAPACITY UPS WITH MAINTENANCE BYPASS PANEL AND BATT SOLUTION



### REMOTE BATTERY-TYPICAL (REST OF CONNECTIONS SIMILAR TO ADJACENT BATTERY EXCEPT BELOW)



#### NOTES:

1. INSTALLATION SHALL COMPLY WITH ALL APPLICABLE NATIONAL, STATE AND LOCAL CODES.
2. REFER TO PRODUCT INSTALLATION DOCUMENTATION FOR SITE PREPARATIONS.
3. DRAWING DEPICTS POWER SYSTEM CONNECTIONS AND IS NOT REPRESENTATIVE OF PHYSICAL LAYOUT. REFER TO MECHANICAL DRAWINGS FOR EQUIPMENT LAYOUT.
4. FINAL SELECTIONS ARE RESPONSIBILITY OF ENGINEER OF RECORDS BASED ON INSTALLED CONDITIONS AND SCC/SELECTIVE CO-ORDINATION/ARC-FLASH ANALYSIS.
- △5. BUS LINK APPLICABLE FOR SINGLE MAINS ONLY, TO BE REMOVED FOR DUAL MAINS INSTALLATION.
- △6. FOR TECHNICAL SPECIFICATIONS, RECOMMENDATIONS AND SKU NUMBERS REFER TO SHEET-6.
- △7. THE NUMBER OF OUTPUT WIRES MUST MATCH THE NUMBER OF INPUT WIRES IN SINGLE MAINS OR BYPASS WIRES FOR DUAL MAINS.
- △8. MAXIMUM INPUT SHORT-CIRCUIT WITHSTAND:  $I_{cw}=65\text{KA}$  RMS SYMMETRICAL.
- △9. APPLICABLE FOR ALL UPSs EXCEPT GVSUPS10KB2HS & GVSUPS20KB2HS. TWO CABINETS SHOWN. MAXIMUM OF FOUR BATTERY CABINETS CAN BE BAYED WITH THE UPS. FOR RUNTIME DETAILS REFER TO BATTERY CABINET INSTALLATION MANUALS OR CONTACT SCHNEIDER ELECTRIC.
- △10. FOR OPTIONAL POWER AND SIGNAL INTERFACE CABLE DETAILS CONTACT SCHNEIDER ELECTRIC.
- △11. TN AND TT POWER DISTRIBUTION SYSTEMS ARE SUPPORTED. CORNER (LINE) GROUNDING IS NOT SUPPORTED. ONLY FOR DUAL MAINS SYSTEM WITH UPSTREAM 4 POLE BREAKERS: INSTALL AN N CONNECTION WITH THE INPUT CABLES.
12. CABLE LUGS ARE PROVIDED BY OTHERS EXCEPT FOR ADJACENT BATTERY CABINET INSTALLATION.
- △13. REFER TO GVSMODBC6 DRAWING FOR ADDITIONAL DETAILS.
- △14. MAXIMUM INPUT SHORT-CIRCUIT WITHSTAND:  $I_{cw}=10\text{KA}$  RMS SYMMETRICAL.
- △15. BOTH MBB AND UOB NEUTRAL ARE CONNECTED WITH PRE-INSTALLED JUMPERS.
- △16. THE INTERNAL MAINTENANCE BREAKER (IMB) MUST BE PADLOCKED IN OPEN POSITION.
- △17. FOR PARALLEL SYSTEMS, UPSTREAM CIRCUIT BREAKER INSTANTANEOUS OVERRIDE (II) VALUES MUST NOT BE SET HIGHER THAN 1250 A.

THIS DRAWING AND SPECIFICATIONS HEREIN ARE THE PROPERTY OF SCHNEIDER ELECTRIC AND SHALL NOT BE COPIED, REPRODUCED OR USED IN WHOLE OR IN PART, AS THE BASIS FOR THE MANUFACTURE OR SALE OF ITEMS WITHOUT WRITTEN PERMISSION FROM SCHNEIDER ELECTRIC. THIS DRAWING IS BASED UPON LATEST AVAILABLE INFORMATION AND IS SUBJECT TO CHANGE WITHOUT NOTICE.

**Schneider Electric**

**TITLE:** GALAXY VS  
Input: 380/400/415V AC, 3PH, 50Hz SINGLE FEED  
Output: 380/400/415V AC, 3PH, 50Hz 10-50kW  
2 MOD N+1/N UPS w BATTERY AND PARALLEL MBP  
SYSTEM ONE LINE DIAGRAM

**PROJECT:** DRAWINGS **SHEET** 5 OF 6

**DWG NO:** GVS10K50HSA10-SD

**DRAWN BY:** BALA 01-SEP-21

**ENGINEER:** S A / C A 02-SEP-21

**APPROVED BY:** C B / C A 02-SEP-21

**REV.** 1

**ANGLE**

**PROJECTION**

**N. A.**

GALAXY VS 10–50KW 1 MODULE/ 1+1 MODULE UPS WITH/WITHOUT MBP 380/400/415V AC IN–380/400/415V AC OUT UPS SYSTEM SITE PLANNING DATA																
MAINS INPUT (SINGLE MAINS): 380/400/415V AC, 50Hz 3PH, WYE 4 WIRE+G						BYPASS INPUT: 380/400/415V AC, 50Hz, 3PH, WYE, 4 WIRE+G OUTPUT: 380/400/415V AC, 50Hz, 3PH, 4 WIRE+G										
MAINS INPUT (DUAL MAINS): 380/400/415V AC, 50Hz 3PH, WYE, 3 WIRE+G						NOMINAL DC VOLTAGE: 480V DC, 40 BLOCKS, 9AH, VRLA 12V										
UPS RATING (kW)	UPS SKU NUMBER	UPS INTERNAL BATTERY STRING		APPLICABLE MAINTENANCE BYPASS CABINET SKU NUMBER	APPLICABLE BATTERY CABINET SKU NUMBERS	NOMINAL MAINS INPUT CURRENT (A) @380/400/415V AC	MAXIMUM INPUT CURRENT (A) @380/400/415V AC	NOMINAL BYPASS INPUT CURRENT		UPS / SYSTEM OUTPUT CURRENT (A) @380/400/415V AC	BATTERY CURRENT (40 BLOCKS) (A DC)		UPS WITHOUT MBC–RECOMMENDED UPSTREAM BREAKER In (A)/Ir (A)/ Im (A) FIXED (MAKE : SCHNEIDER ELECTRIC)			
													MAINS INPUT		BYPASS INPUT	
		STRINGS INCLUDED	MAXIMUM CAPACITY					PHASE CURRENT (A) @380/400/415 AC	NEUTRAL CURRENT (A) @380/400/415V AC		FULL LOAD CURRENT @NOMINAL VOLTAGE (480V DC)	FULL LOAD CURRENT @EOD VOLTAGE (384V DC)	BREAKER MODEL	In/Ir/ Im FIXED(A)	BREAKER MODEL	In/Ir/ Im FIXED(A)
10	GVSUPS10KB2HS	1	2	GVSBPSU10K20H	N A	16/15/14	19/18/17	15/15/14	26/25/24	15/14/14	22	27	LV429676	25/20/300	LV429677	16/16/190
15	GVSUPS15KB2HS					24/22/22	28/27/26	23/22/21	39/37/36	23/22/21	33	41	LV429675	32/32/400	LV429676	25/23/300
20	GVSUPS20KB2HS					32/30/29	38/36/35	31/29/28	53/50/48	30/29/28	43	54	LV429674	40/40/500	LV429675	32/32/400
10	GVSUPS10KB4HS	2	4	GVSBPSU10K20H	GVSMODBC6 (MAXIMUM BATTERY STRING CAPACITY–6)	16/15/14	19/18/17	15/15/14	26/25/24	15/14/14	22	27	LV429676	25/20/300	LV429677	16/16/190
15	GVSUPS15KB4HS					24/22/22	28/27/26	23/22/21	39/37/36	23/22/21	33	41	LV429675	32/32/400	LV429676	25/23/300
20	GVSUPS20KB4HS					32/30/29	38/36/35	31/29/28	53/50/48	30/29/28	43	54	LV429674	40/40/500	LV429675	32/32/400
30	GVSUPS30KB4HS					47/45/43	57/54/52	46/44/42	79/75/72	46/43/42	65	81	LV429672	63/63/500	LV429673	50/50/500
40	GVSUPS40KB4HS					63/60/58	76/72/69	61/58/56	105/100/96	61/58/56	87	109	LV429671	80/80/640	LV429672	63/63/500
50	GVSUPS50KB4HS					79/75/72	91/90/87	77/73/70	131/125/120	76/72/70	109	136	LV429670	100/100/800	LV429671	80/80/640

MAINTENANCE BYPASS PANEL (MBP) SWITCHGEAR DETAILS (MAKE: SCHNEIDER ELECTRIC)			
DEVICE ID/ MBP SKU	GVSBPSU10K30H	GVSBPSU20K60H	GVSBPSU80K120H
UIB / SSIB/ UOB/SIB/ MBB	80A, 4P LOAD SWITCH (INS80 MG)	160A, 4P LOAD SWITCH (INS160 MG)	250A, 4P LOAD SWITCH (INS250 MG)

GALAXY VS 10–50KW 2+0 2 MODULE UPS WITH/WITHOUT MBP 380/400/415V AC IN–380/400/415V AC OUT UPS SYSTEM SITE PLANNING DATA																								
MAINS INPUT (SINGLE MAINS): 380/400/415V AC, 50HZ 3PH, WYE 4 WIRE+G					BYPASS INPUT: 380/400/415V AC, 50HZ, 3PH, WYE, 4 WIRE+G															OUTPUT: 380/400/415V AC, 50HZ, 3PH, 4 WIRE+G				
MAINS INPUT (DUAL MAINS): 380/400/415V AC, 50HZ 3PH, WYE, 3 WIRE+G					NOMINAL DC VOLTAGE: 480V DC, 40 BLOCKS, 9AH, VRLA 12V																			
UPS RATING (kW)	UPS SKU NUMBER	UPS INTERNAL BATTERY STRING		APPLICABLE MAINTENANCE BYPASS CABINET SKU NUMBER	APPLICABLE BATTERY CABINET SKU NUMBERS	SYSTEM LEVEL		INDIVIDUAL UPS LEVEL		NOMINAL BYPASS INPUT CURRENT		INDIVIDUAL UPS OUTPUT CURRENT (A) @380/400/415V AC	SYSTEM OUTPUT CURRENT (A) @380/400/415V AC	BATTERY CURRENT (40 BLOCKS) (A DC)		RECOMMENDED UPSTREAM SYSTEM MAINS INPUT BREAKER In (A)/Ir (A)/ Im (A) FIXED (MAKE : SCHNEIDER ELECTRIC) ⚠		RECOMMENDED UPSTREAM SYSTEM BYPASS INPUT BREAKER In (A)/Ir (A)/ Im (A) FIXED (MAKE : SCHNEIDER ELECTRIC) ⚠						
		STRINGS INCLUDED	MAXIMUM CAPACITY			NOMINAL MAINS INPUT CURRENT (A) @380/400/415V AC	MAXIMUM INPUT CURRENT (A) @380/400/415V AC	NOMINAL MAINS INPUT CURRENT (A) @380/400/415V AC	MAXIMUM INPUT CURRENT (A) @380/400/415V AC	PHASE CURRENT (A) @380/400/415 AC	NEUTRAL CURRENT (A) @380/400/415V AC			FULL LOAD CURRENT @NOMINAL VOLTAGE (480V DC)	FULL LOAD CURRENT @EOD VOLTAGE (384V DC)	BREAKER MODEL	In/Ir/Im FIXED(A)	BREAKER MODEL	In/Ir/Im FIXED(A)					
10	GVSUPS10KB2HS	1	2	GVSBPSU10K20H	N A	32/30/28	38/36/34	16/15/14	19/18/17	30/30/28	52/50/48	15/14/14	30/28/28	22	27	LV429674	40/40/500	LV429675	32/32/400					
15	GVSUPS15KB2HS					48/44/44	56/54/52	24/22/22	28/27/26	46/44/42	78/74/72	23/22/21	46/44/42	33	41	LV429672	63/63/500	LV429673	50/50/500					
20	GVSUPS20KB2HS					64/60/58	76/72/70	32/30/29	38/36/35	62/58/86	106/100/96	30/29/28	60/58/56	43	54	LV429671	80/80/640	LV429672	63/63/500					
10	GVSUPS10KB4HS	2	4	GVSBPSU10K20H	GVSMODBC6 (MAXIMUM BATTERY STRING CAPACITY–6)	32/30/28	38/36/34	16/15/14	19/18/17	30/30/28	52/50/48	15/14/14	30/28/28	22	27	LV429674	40/40/500	LV429675	32/32/400					
15	GVSUPS15KB4HS					48/44/44	56/54/52	24/22/22	28/27/26	46/44/42	78/74/72	23/22/21	46/44/42	33	41	LV429672	63/63/500	LV429673	50/50/500					
20	GVSUPS20KB4HS					64/60/58	76/72/70	32/30/29	38/36/35	62/58/86	106/100/96	30/29/28	60/58/56	43	54	LV429671	80/80/640	LV429672	63/63/500					
30	GVSUPS30KB4HS					94/90/86	114/108/104	47/45/43	57/54/52	92/88/84	158/150/144	46/43/42	92/86/84	65	81	LV430671	125/125/1250	LV430670	100/100/800					
40	GVSUPS40KB4HS					126/120/116	152/144/138	63/60/58	76/72/69	122/116/112	210/200/192	61/58/56	122/116/112	87	109	LV430670	160/160/1250	LV430671	125/125/1250					
50	GVSUPS50KB4HS					158/150/144	182/180/174	79/75/72	91/90/87	154/146/140	262/250/240	76/72/70	152/144/140	109	136	LV431671	200/200/5–10 x In	LV430670	160/160/1250					

MAINTENANCE BYPASS PANEL (MBP) SWITCHGEAR DETAILS (MAKE: SCHNEIDER ELECTRIC)			
DEVICE ID/ MBP SKU	GVSBP4R10K30H	GVSBP4R40K50H	GVSBP4R60K120H
UIBx / UOBx	80A, 4P LOAD SWITCH (INS80 MG)	160A, 4P LOAD SWITCH (INS160 MG)	250A, 4P LOAD SWITCH (INS250 MG)
MBB	160A, 4P LOAD SWITCH (INS160 MG)	250A, 4P LOAD SWITCH (INS250 MG)	630A, 4P LOAD SWITCH (INS630 MG)

NOTES:

1. INSTALLATION SHALL COMPLY WITH ALL APPLICABLE NATIONAL, STATE AND LOCAL CODES.
2. REFER TO PRODUCT INSTALLATION DOCUMENTATION FOR SITE PREPARATIONS.
- △ 3. FOR PARALLEL SYSTEMS, UPSTREAM CIRCUIT BREAKER INSTANTANEOUS OVERRIDE (II) VALUES MUST NOT BE SET HIGHER THAN 1250 A.

THIS DRAWING AND SPECIFICATIONS HEREIN ARE THE PROPERTY OF SCHNEIDER ELECTRIC AND SHALL NOT BE COPIED, REPRODUCED OR USED IN WHOLE OR IN PART, AS THE BASIS FOR THE MANUFACTURE OR SALE OF ITEMS WITHOUT WRITTEN PERMISSION FROM SCHNEIDER ELECTRIC. THIS DRAWING IS BASED UPON LATEST AVAILABLE INFORMATION AND IS SUBJECT TO CHANGE WITHOUT NOTICE.

**Schneider Electric**

**TITLE:** GALAXY VS  
Input:380/400/415V AC,3PH,50Hz SINGLE/DUAL FEED  
Output: 380/400/415V AC,3PH,50Hz 10–50kW  
20–100kW 1 MOD/2 MOD N+1 UPS w MBP BATT  
BATTERY SOLUTION AND SITE PLANNING  
**PROJECT:** DRAWINGS **SHEET** 6 OF 6

**DWG NO:** GVS10K50HSAIO–SD **REV.** 2  
**DRAWN BY:** BALA **01–SEP–21** **ANGLE**  
**ENGINEER:** S A / C A **02–SEP–21** **PROJECTION**  
**APPROVED BY:** C B / C A **02–SEP–21** **N. A**