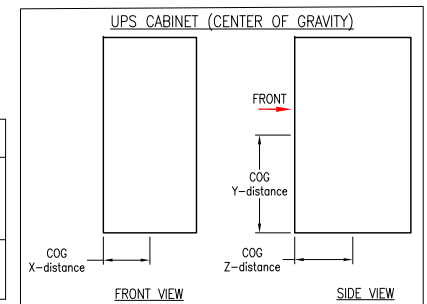


**NOTES:**

1. INSTALLATION SHALL COMPLY WITH ALL APPLICABLE NATIONAL, STATE AND LOCAL CODES.
2. REFER TO PRODUCT DOCUMENTATION FOR ADDITIONAL DETAILS PRIOR TO INSTALLATION AND SITE PREPARATION WORK.
3. ALL DIMENSIONS ARE IN INCHES [MILLIMETERS].
- Δ4. CLEARANCE DIMENSIONS ARE RECOMMENDED FOR AIRFLOW AND SERVICE ACCESS ONLY.
5. ALL DIMENSIONS EXCLUDES SCREW PROJECTIONS OUTSIDE THE ENCLOSURE.
6. CABLE ENTRY IS FROM REAR OF THE UNIT.
7. OPERATING TEMPERATURE: 32°F TO 104°F [0°C TO 40°C].
8. PROTECTION CLASS: IP20.
9. COLOR: RAL 9003, GLOSS LEVEL 85%.
- Δ10. THIS INFORMATION PROVIDES APPROXIMATE CENTER OF GRAVITY CALCULATION.
- Δ11. DRILL/PUNCH HOLES IN PLATE. REMOVE PLATE FROM CABINET BEFORE DRILLING/PUNCHING.

Δ10

CENTER OF GRAVITY AND WEIGHT DATA					
UPS SKU NUMBER	RATING (kW)	CENTER OF GRAVITY DISTANCE IN INCHES [MILLIMETERS]			WEIGHT lbs [kg]
		X DISTANCE	Y DISTANCE	Z DISTANCE	
GVSUPS10KB2FS	10@208V	6.42 [163]	21.49 [546]	17.24 [438]	540.13 [245]
GVSUPS20KB2GS	20@480V				



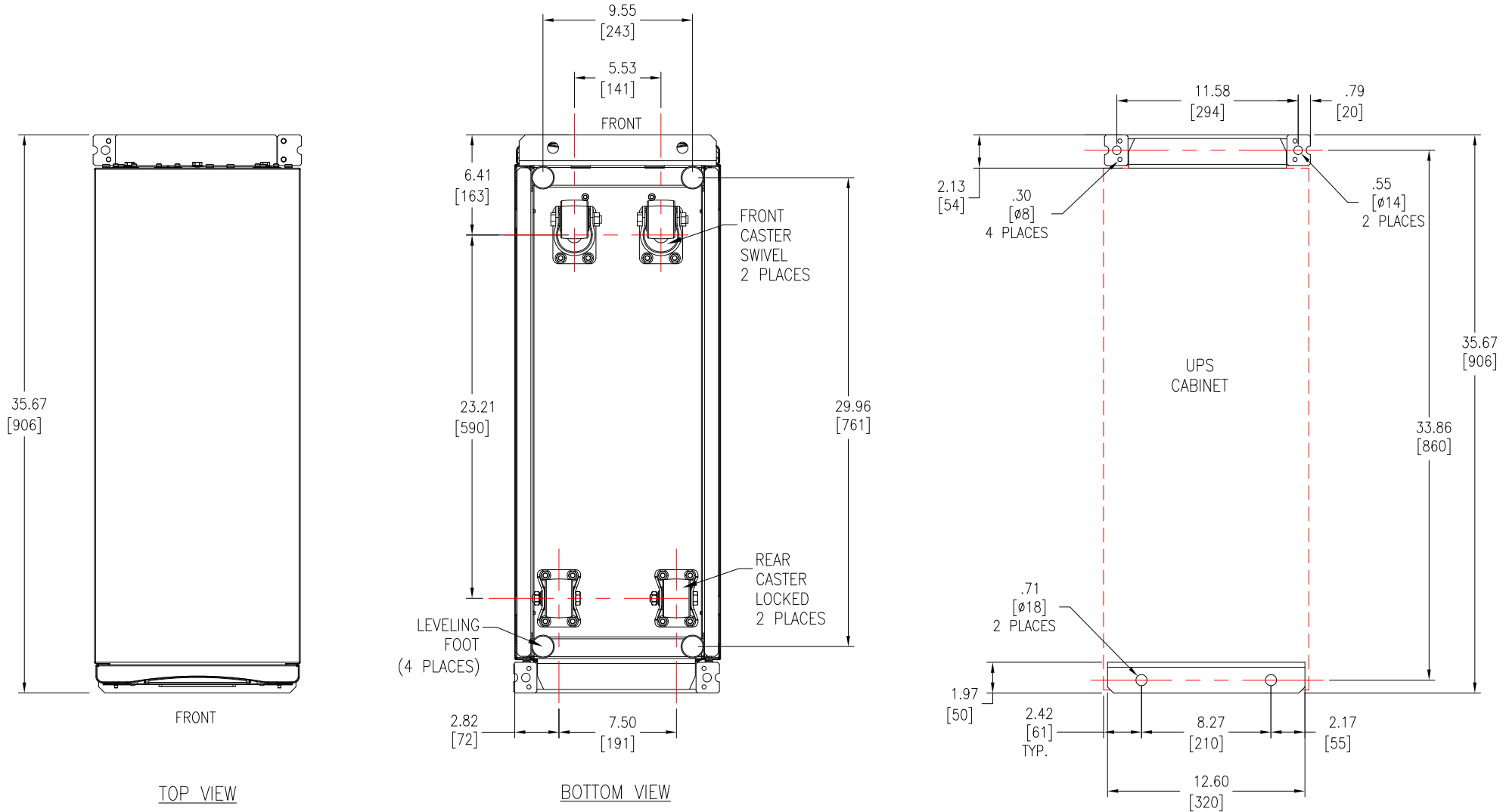
THIS DRAWING AND SPECIFICATIONS HEREIN ARE THE PROPERTY OF SCHNEIDER ELECTRIC AND SHALL NOT BE COPIED, REPRODUCED OR USED IN WHOLE OR IN PART, AS THE BASIS FOR THE MANUFACTURE OR SALE OF ITEMS WITHOUT WRITTEN PERMISSION FROM SCHNEIDER ELECTRIC. THIS DRAWING IS BASED UPON LATEST AVAILABLE INFORMATION AND IS SUBJECT TO CHANGE WITHOUT NOTICE.



**TITLE:** Galaxy VS  
 UPS 10kW-208V / 20kW-480V  
 10kW 208V-IN-208V-OUT 3PH 60Hz /  
 20kW 480V-IN-480V-OUT 3PH 60Hz /  
 GENERAL ARRANGEMENT

<b>DWG NO:</b>	GVS10K20FGSAIO		<b>REV.</b>	0
<b>DRAWN BY:</b>	BALA	16-SEP-19	THIRD ANGLE PROJECTION	
<b>ENGINEER:</b>	N R / C B	15-OCT-19		
<b>APPROVED BY:</b>	J L	15-OCT-19		

**PROJECT:** SUBMITTAL DRAWINGS **SHEET** 1 OF 3



4. OPTIONAL SEISMIC KIT (GVSOPT017)  
ANCHORING DETAILS (BASE TOP VIEW)

**NOTES:**

1. INSTALLATION SHALL COMPLY WITH ALL APPLICABLE NATIONAL, STATE AND LOCAL CODES.
2. REFER TO PRODUCT DOCUMENTATION FOR ADDITIONAL DETAILS PRIOR TO INSTALLATION AND SITE PREPARATION WORK.
3. ALL DIMENSIONS ARE IN INCHES [MILLIMETERS].
4. SEISMIC LOCATION : OPTIONAL SEISMIC KIT IS REQUIRED.  
NON-SEISMIC LOCATION: NEED FRONT ANCHOR 870-63218  
(REUSE THE TRANSPORT FRONT ANCHOR ONLY).

THIS DRAWING AND SPECIFICATIONS HEREIN ARE THE PROPERTY OF SCHNEIDER ELECTRIC AND SHALL NOT BE COPIED, REPRODUCED OR USED IN WHOLE OR IN PART, AS THE BASIS FOR THE MANUFACTURE OR SALE OF ITEMS WITHOUT WRITTEN PERMISSION FROM SCHNEIDER ELECTRIC. THIS DRAWING IS BASED UPON LATEST AVAILABLE INFORMATION AND IS SUBJECT TO CHANGE WITHOUT NOTICE.



**TITLE:** Galaxy VS  
UPS 10kW-208V / 20kW-480V  
10kW 208V-IN-208V-OUT 3PH 60Hz /  
20kW 480V-IN-480V-OUT 3PH 60Hz /  
TOP, BOTTOM AND ANCHORING

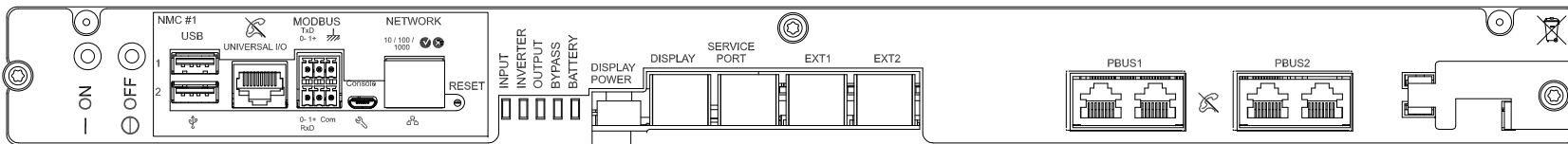
**DWG NO:** GVS10K20FGSAIO **REV.** 0

**DRAWN BY:** BALA 16-SEP-19 **THIRD**

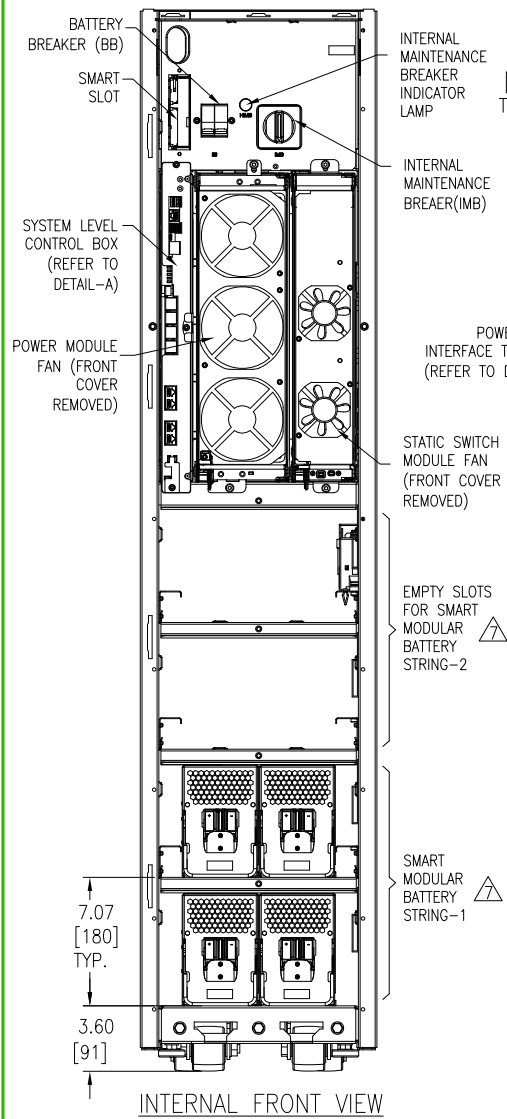
**ENGINEER:** N R / C B 15-OCT-19 **ANGLE**

**PROJECT:** SUBMITTAL DRAWINGS **SHEET** 1 OF 3

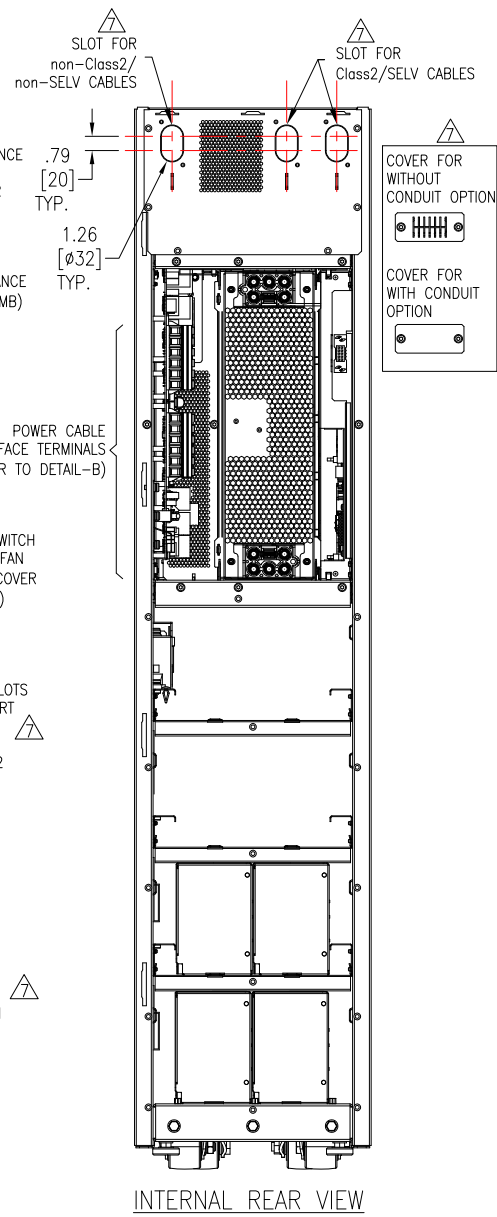
**APPROVED BY:** J L 15-OCT-19 **PROJECTION**



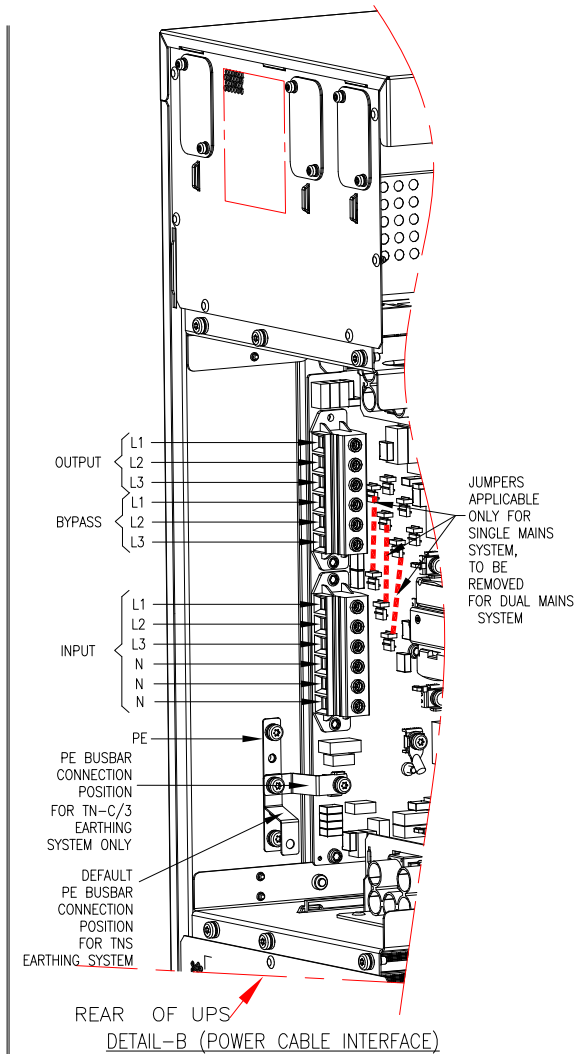
△5 DETAIL-A (SYSTEM LEVEL CONTROL BOX-ENLARGED VIEW)



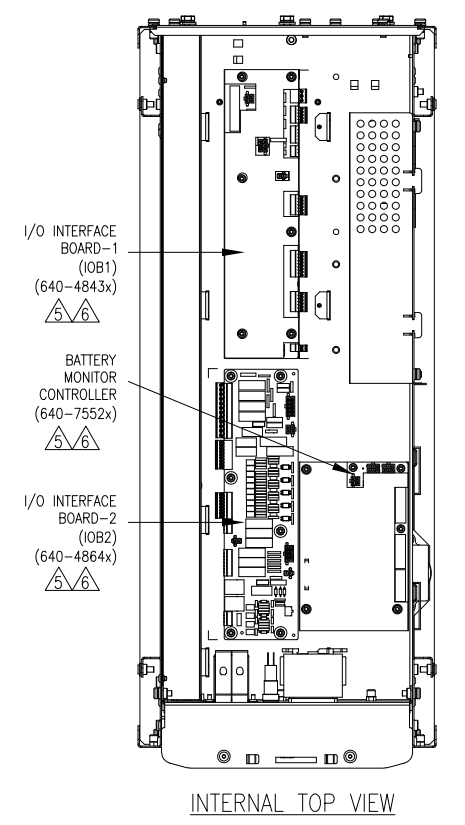
INTERNAL FRONT VIEW



INTERNAL REAR VIEW



REAR OF UPS  
DETAIL-B (POWER CABLE INTERFACE)



INTERNAL TOP VIEW

△5 BATTERY STRING DETAILS			
UPS SKU NUMBER	RATING (kW)	AVAILABLE WITH DEFAULT NUMBER OF STRINGS	MAXIMUM NUMBER OF STRING CAPACITY
GVSUPS10KB2FS	10@208V	1 (GVSBT4)	2 (GVSBT4)
GVSUPS20KB2GS	20@480V	1 (GVSBT4)	2 (GVSBT4)

- NOTES:
- INSTALLATION SHALL COMPLY WITH ALL APPLICABLE NATIONAL, STATE AND LOCAL CODES.
  - REFER TO PRODUCT DOCUMENTATION FOR ADDITIONAL DETAILS PRIOR TO INSTALLATION AND SITE PREPARATION WORK.
  - ALL DIMENSIONS ARE IN INCHES [MILLIMETERS].
  - SOME STRUCTURAL DETAILS HAVE BEEN OMITTED FOR THE PURPOSE OF CLARITY.
  - FOR INTERFACE DETAILS REFER TO SYSTEM WIRING DIAGRAM GVS10K50LGFSAIO-WD.
  - FOR LATEST BOARD PART NUMBER CONTACT SCHNEIDER ELECTRIC.

THIS DRAWING AND SPECIFICATIONS HEREIN ARE THE PROPERTY OF SCHNEIDER ELECTRIC AND SHALL NOT BE COPIED, REPRODUCED OR USED IN WHOLE OR IN PART, AS THE BASIS FOR THE MANUFACTURE OR SALE OF ITEMS WITHOUT WRITTEN PERMISSION FROM SCHNEIDER ELECTRIC. THIS DRAWING IS BASED UPON LATEST AVAILABLE INFORMATION AND IS SUBJECT TO CHANGE WITHOUT NOTICE.



TITLE: Galaxy VS  
UPS 20-100kW  
Input: 208V, 3PH, 60Hz  
Output: 208V, 3PH OR 3PH+N, 60Hz  
INTERNAL DETAILS AND CONTROL BOX  
PROJECT: SUBMITTAL DRAWINGS SHEET 3 OF 3

DWG NO: GVS10K20FGSAIO REV. 1  
DRAWN BY: JAYAPRAKASH/BALA 04-AUG-22 THIRD  
ENGINEER: PRASANNA 04-AUG-22 ANGLE  
APPROVED BY: HARISH 04-AUG-22 PROJECTION