

NOTES:

1. INSTALLATION SHALL COMPLY WITH ALL APPLICABLE NATIONAL, STATE AND LOCAL CODES.
2. REFER TO PRODUCT DOCUMENTATION FOR ADDITIONAL DETAILS PRIOR TO INSTALLATION AND SITE PREPARATION WORK.
3. ALL DIMENSIONS ARE IN INCHES [MILLIMETERS].
4. CLEARANCE DIMENSIONS MENTIONED ARE FOR AIRFLOW AND SERVICE ACCESS ONLY. CONSULT WITH THE LOCAL SAFETY CODES AND STANDARDS FOR ADDITIONAL REQUIREMENTS IN YOUR LOCAL AREA.
5. ALL DIMENSIONS EXCLUDES SCREW PROJECTIONS OUTSIDE THE ENCLOSURE.
6. CABLE ENTRY IS FROM TOP OR BOTTOM OF THE UNIT.
7. NET WEIGHT OF THE UNIT IS 175kg [385 lbs].
8. OPERATING TEMPERATURE: 32°F TO 104°F [0°C TO 40°C].
9. PROTECTION CLASS: IP20.
10. COLOR: RAL 9003, GLOSS LEVEL 85%.
11. THIS INFORMATION PROVIDES APPROXIMATE CENTER OF GRAVITY CALCULATION.
12. WHILE INSTALLING WITH UPS, REMOVE LEFT SIDE COVER OF THE UPS UNIT AND ATTACH THE MBC WITH BACKFEED UNIT TO THE LEFT SIDE OF THE UPS UNIT. RE-ATTACH LEFT SIDE COVER OF THE UPS TO THE LEFT SIDE OF THE MBP WITH BACKFEED UNIT.

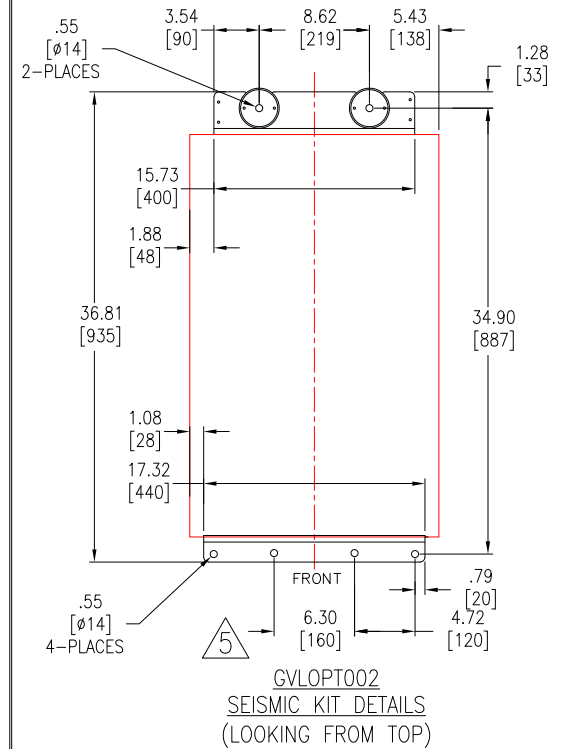
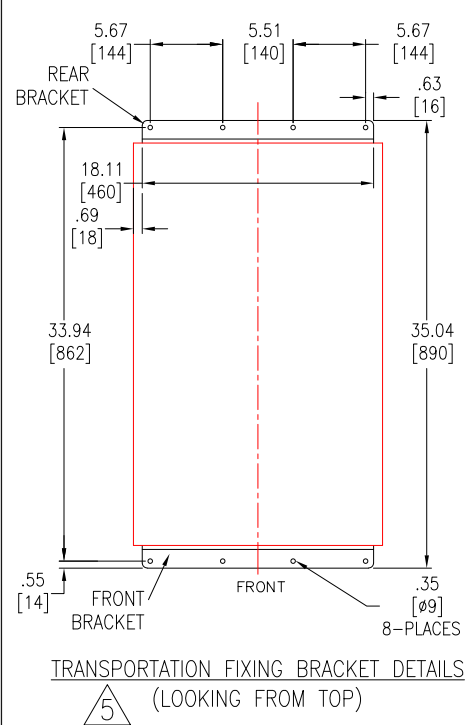
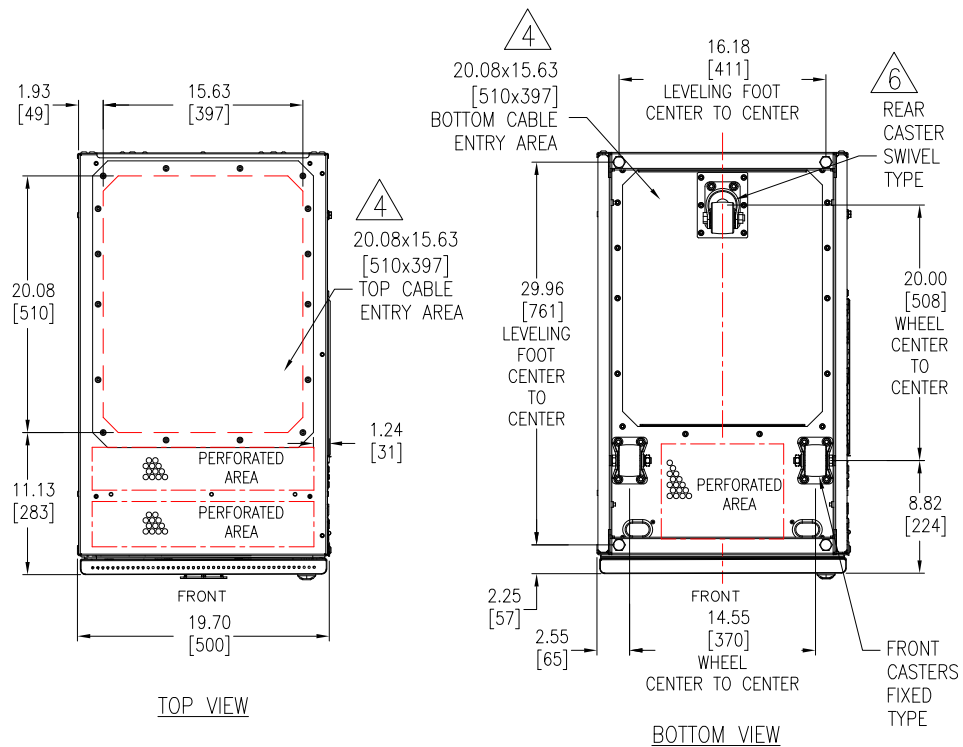
THIS DRAWING AND SPECIFICATIONS HEREIN ARE THE PROPERTY OF SCHNEIDER ELECTRIC AND SHALL NOT BE COPIED, REPRODUCED OR USED IN WHOLE OR IN PART, AS THE BASIS FOR THE MANUFACTURE OR SALE OF ITEMS WITHOUT WRITTEN PERMISSION FROM SCHNEIDER ELECTRIC. THIS DRAWING IS BASED UPON LATEST AVAILABLE INFORMATION AND IS SUBJECT TO CHANGE WITHOUT NOTICE.



TITLE: Galaxy VL
 MAINTENANCE BYPASS CABINET UL TYPE
 Input: 400/415/480V, 3PH, 50/60Hz
 Output: 400/415/480V, 3PH, 50/60Hz
 GENERAL ARRANGEMENT

PROJECT: SUBMITTAL DRAWINGS **SHEET** 1 OF 4

DWG NO: GVLMBCA200K500G	REV: 3
DRAWN BY: BALA/JAYAPRAKASH	21-SEP-22
ENGINEER: A.D/H.L	21-SEP-22
APPROVED BY: C.N/A.D/H.L/VLAD	21-SEP-22
	THIRD ANGLE PROJECTION



NOTES:

- INSTALLATION SHALL COMPLY WITH ALL APPLICABLE NATIONAL, STATE AND LOCAL CODES.
- REFER TO PRODUCT DOCUMENTATION FOR ADDITIONAL DETAILS PRIOR TO INSTALLATION AND SITE PREPARATION WORK.
- ALL DIMENSIONS ARE IN INCHES [MILLIMETERS].
- DRILL/PUNCH HOLES IN PLATE. REMOVE PLATE FROM CABINET BEFORE DRILLING/PUNCHING.
5. FOR NON-SEISMIC LOCATION: USE REAR TRANSPORTATION BRACKET ONLY.
FOR SEISMIC LOCATION : SEISMIC KIT IS REQUIRED (GVLOPT002).
- ONLY REAR CASTER TO BE REMOVED FOR BOTTOM CABLE ENTRY.
- SOME STRUCTURAL DETAILS HAVE BEEN OMITTED FOR THE PURPOSE OF CLARITY.

THIS DRAWING AND SPECIFICATIONS HEREIN ARE THE PROPERTY OF SCHNEIDER ELECTRIC AND SHALL NOT BE COPIED, REPRODUCED OR USED IN WHOLE OR IN PART, AS THE BASIS FOR THE MANUFACTURE OR SALE OF ITEMS WITHOUT WRITTEN PERMISSION FROM SCHNEIDER ELECTRIC. THIS DRAWING IS BASED UPON LATEST AVAILABLE INFORMATION AND IS SUBJECT TO CHANGE WITHOUT NOTICE.



TITLE: Galaxy VL MAINTENANCE BYPASS CABINET UL TYPE
Input: 400/415/480V, 3PH, 50/60Hz
Output: 400/415/480V, 3PH, 50/60Hz
TOP-BOTTOM VIEWS & ANCHORING

PROJECT: SUBMITTAL DRAWINGS SHEET 2 OF 4

DWG NO: GVLBCA200K500G

DRAWN BY: BALA/JAYAPRAKASH 21-SEP-22

ENGINEER: AD/H.L. 21-SEP-22

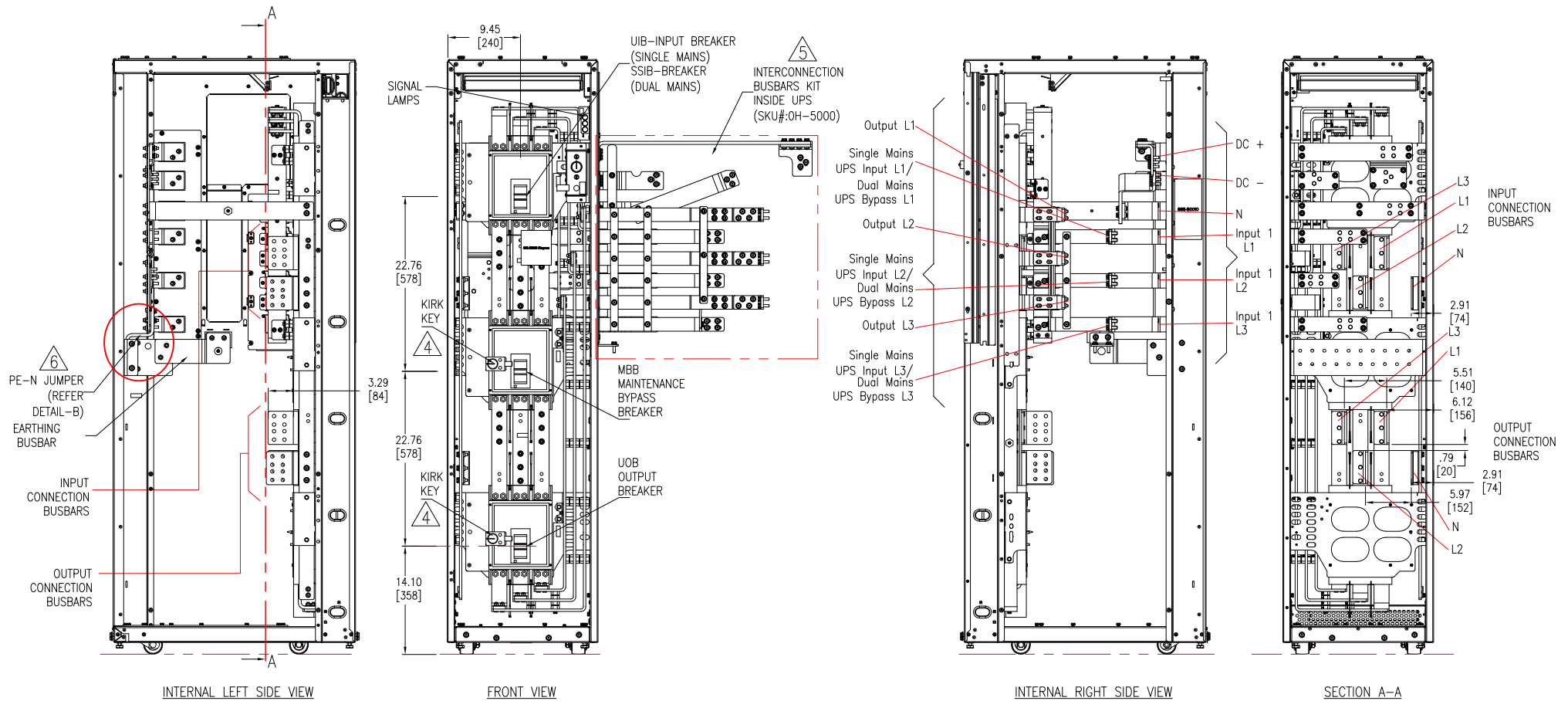
APPROVED BY: C.N/A.D/H.L/VLAD 21-SEP-22

REV. 2

THIRD

ANGLE

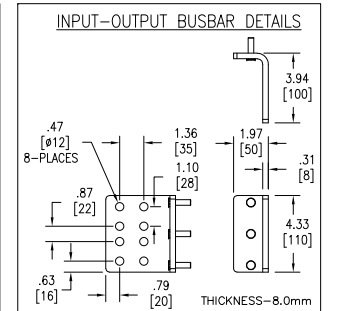
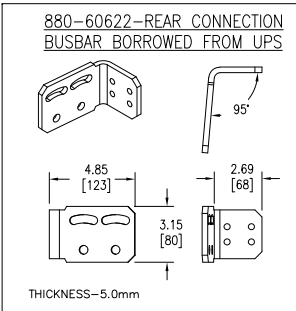
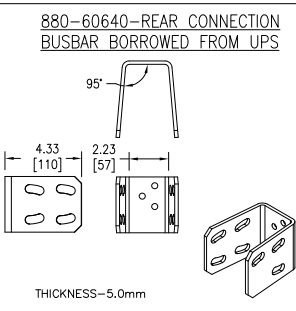
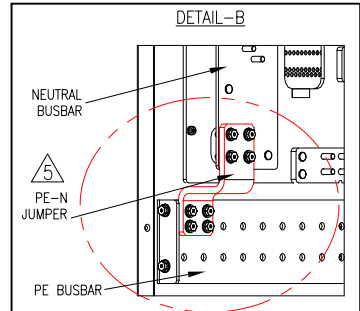
PROJECTION



SWITCH-DISCONNECTOR DETAILS

COMPONENT	TYPE	RATING
UIB/SSIB/MBB/UOB	MCCB, P FRAME	1200A, 600VAC, 3P

- NOTES:**
- INSTALLATION SHALL COMPLY WITH ALL APPLICABLE NATIONAL, STATE AND LOCAL CODES.
 - REFER TO PRODUCT DOCUMENTATION FOR ADDITIONAL DETAILS PRIOR TO INSTALLATION AND SITE PREPARATION WORK.
 - ALL DIMENSIONS ARE IN INCHES [MILLIMETERS].
 - OPTIONAL SKU# GVSOPT004.
 - INTERCONNECTION KIT (OH-5000) IS PART OF MBC UNIT.
 - PE-N JUMPER PART OF INTERFACE KIT(OH-5000) SHOULD BE USED BETWEEN PE BUSBAR AND NEUTRAL BUSBAR ONLY FOR TN-C SYSTEM INSTALLATION.
 - SOME STRUCTURAL DETAILS HAVE BEEN OMITTED FOR THE PURPOSE OF CLARITY.



THIS DRAWING AND SPECIFICATIONS HEREIN ARE THE PROPERTY OF SCHNEIDER ELECTRIC AND SHALL NOT BE COPIED, REPRODUCED OR USED IN WHOLE OR IN PART, AS THE BASIS FOR THE MANUFACTURE OR SALE OF ITEMS WITHOUT WRITTEN PERMISSION FROM SCHNEIDER ELECTRIC. THIS DRAWING IS BASED UPON LATEST AVAILABLE INFORMATION AND IS SUBJECT TO CHANGE WITHOUT NOTICE.



TITLE: Galaxy VL MAINTENANCE BYPASS CABINET UL TYPE
 Input: 400/415/480V, 3PH, 50/60Hz
 Output: 400/415/480V, 3PH, 50/60Hz
 INTERNAL VIEW-1

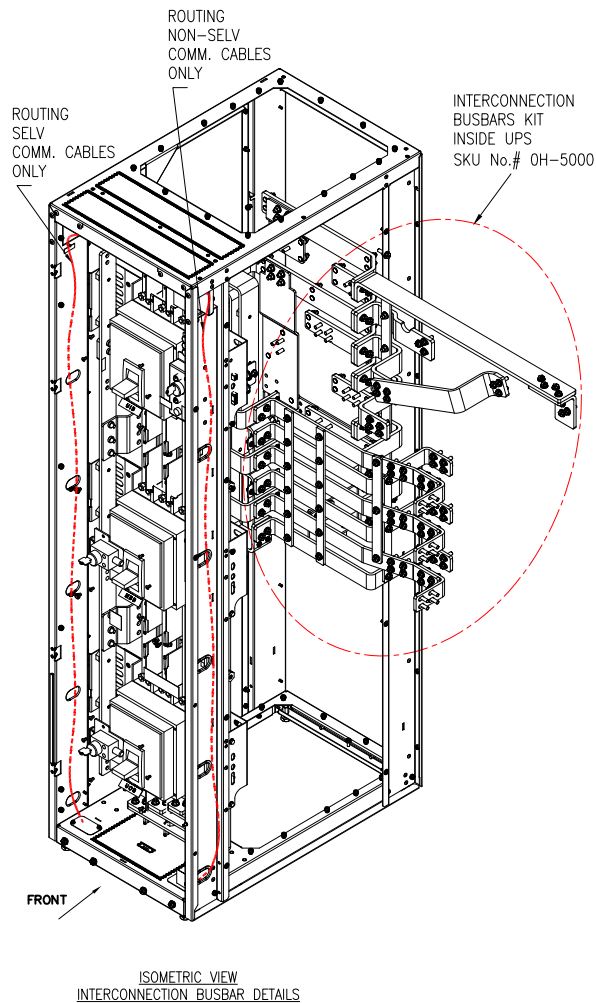
PROJECT: SUBMITTAL DRAWINGS **SHEET** 3 OF 4

DWG NO: GVLMBCA200K500G **REV.** 3

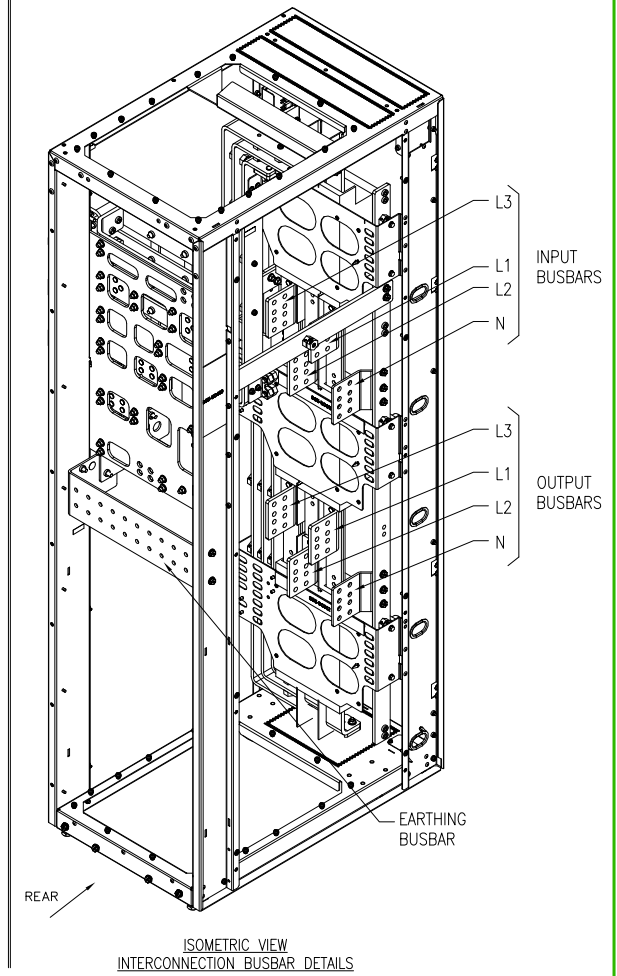
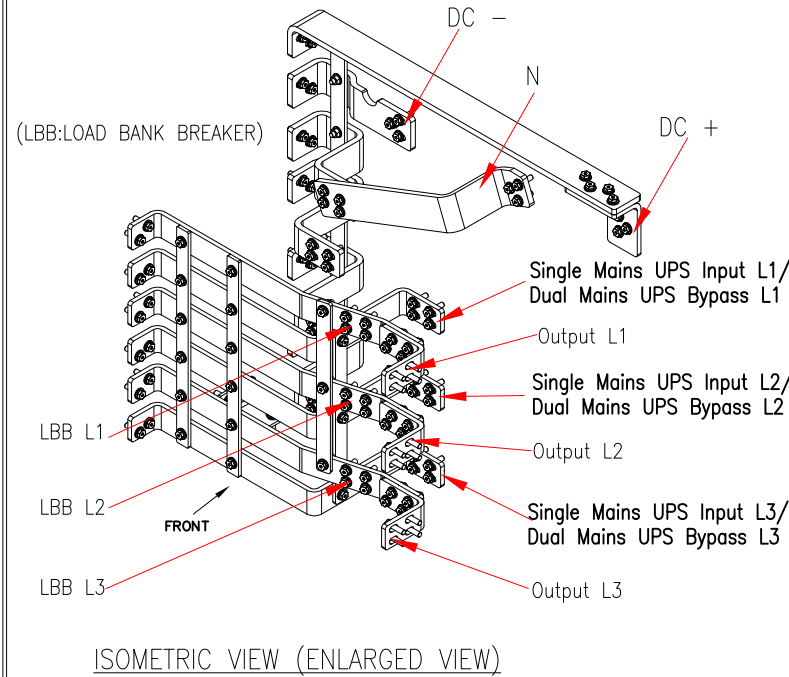
DRAWN BY: BALA/JAYAPRAKASH 21-SEP-22 **THIRD**

ENGINEER: A.D./H.L. 21-SEP-22 **ANGLE**

APPROVED BY: C.N/A.D./H.L./VLAD 21-SEP-22 **PROJECTION**



INTERCONNECTION BUSBARS KIT
PART No.# 0H-5000 (MBC TO UPS)



NOTES:

1. INSTALLATION SHALL COMPLY WITH ALL APPLICABLE NATIONAL, STATE AND LOCAL CODES.
2. REFER TO PRODUCT DOCUMENTATION FOR ADDITIONAL DETAILS PRIOR TO INSTALLATION AND SITE PREPARATION WORK.
3. ALL DIMENSIONS ARE IN INCHES [MILLIMETERS].
4. SOME STRUCTURAL DETAILS HAVE BEEN OMITTED FOR THE PURPOSE OF CLARITY.

THIS DRAWING AND SPECIFICATIONS HEREIN ARE THE PROPERTY OF SCHNEIDER ELECTRIC AND SHALL NOT BE COPIED, REPRODUCED OR USED IN WHOLE OR IN PART, AS THE BASIS FOR THE MANUFACTURE OR SALE OF ITEMS WITHOUT WRITTEN PERMISSION FROM SCHNEIDER ELECTRIC. THIS DRAWING IS BASED UPON LATEST AVAILABLE INFORMATION AND IS SUBJECT TO CHANGE WITHOUT NOTICE.

Schneider Electric

TITLE: Galaxy VL
MAINTENANCE BYPASS CABINET UL TYPE
Input: 400/415/480V, 3PH, 50/60Hz
Output: 400/415/480V, 3PH, 50/60Hz
INTERNAL VIEW-2

DWG NO: GVLMBCA200K500G REV. 2

DRAWN BY: BALA/JAYAPRAKASH 21-SEP-22 THIRD

ENGINEER: A.D/H.L. 21-SEP-22 ANGLE

PROJECT: SUBMITTAL DRAWINGS SHEET 4 OF 4 APPROVED BY: C.N/A.D/H.L./VLAD 21-SEP-22 PROJECTION