

NOTES:

1. INSTALLATION SHALL COMPLY WITH ALL APPLICABLE NATIONAL, STATE AND LOCAL ELECTRICAL REGULATIONS.
2. REFER TO PRODUCT DOCUMENTATION FOR ADDITIONAL DETAILS PRIOR TO INSTALLATION AND SITE PREPARATION WORK.
3. ALL DIMENSIONS ARE IN MILLIMETERS [INCHES].
4. FRONT ACCESS REQUIRED FOR SERVICE.
5. CABLE ENTRY IS FROM BOTH TOP AND BOTTOM OF THE CABINET.
6. THE WEIGHT OF THE UNIT IS 66 kg [145.2 lbs].
7. OPERATING TEMPERATURE: 0°C TO 40°C [32°F TO 104°F]
8. COLOR: RAL 9003, GLOSS LEVEL 85%.
9. PROTECTION CLASS: IP20.
10. DRILL/PUNCH HOLES IN PLATE. REMOVE PLATE FROM CABINET BEFORE DRILLING/PUNCHING. USE APPROPRIATE CABLE PROTECTION AROUND HOLE BEFORE CABLING IS INSTALLED.

THIS DRAWING AND SPECIFICATIONS HEREIN ARE THE PROPERTY OF SCHNEIDER ELECTRIC AND SHALL NOT BE COPIED, REPRODUCED OR USED IN WHOLE OR IN PART, AS THE BASIS FOR THE MANUFACTURE OR SALE OF ITEMS WITHOUT WRITTEN PERMISSION FROM SCHNEIDER ELECTRIC. THIS DRAWING IS BASED UPON LATEST AVAILABLE INFORMATION AND IS SUBJECT TO CHANGE WITHOUT NOTICE.

Schneider Electric

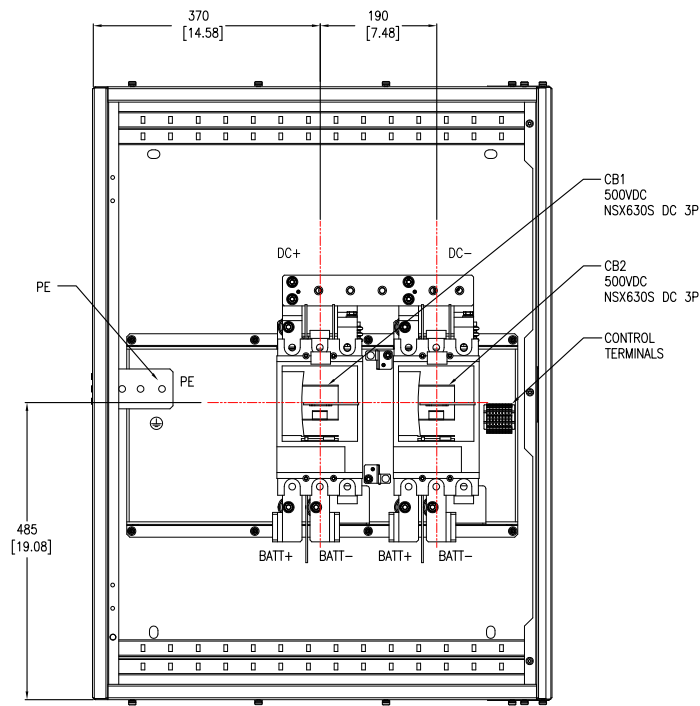
TITLE: GALAXY VL
BATTERY BREAKER BOX 100-500kW, 400V
WITH TWO CIRCUIT BREAKERS
GENERAL ARRANGEMENT

PROJECT: SUBMITTAL DRAWINGS SHEET 1 OF 2

DWG NO: GVBBB630EL-2CB

DRAWN: K NAGENDRA	14-MAY-20
ENGINEER: TERRY HU	14-MAY-20
APPROVED: ALICE DU	14-MAY-20

REV. 0
FIRST ANGLE PROJECTION



INTERNAL FRONT VIEW
(FRONT DOOR AND FRONT PANEL REMOVED)



CB1 DETAILS

Voltage (V)	UPS Rating (kVA)	Trip Setting (A)	
		I _r	I _m
380/400/415	250	420	1500 (fixed)
	300	480	
	400	540	
	500	600	

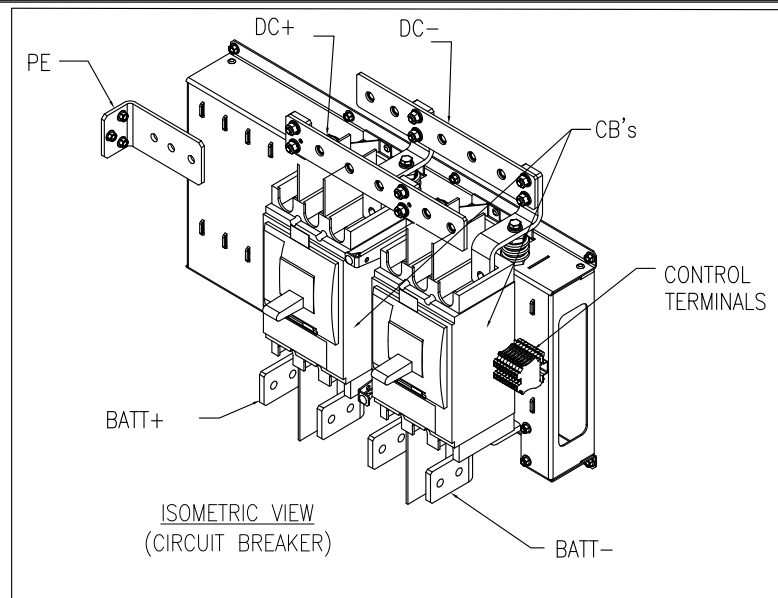
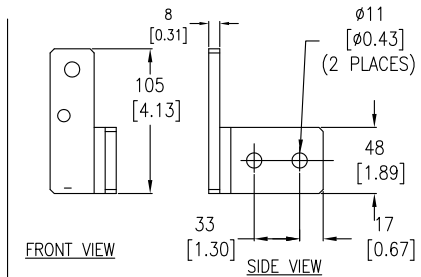
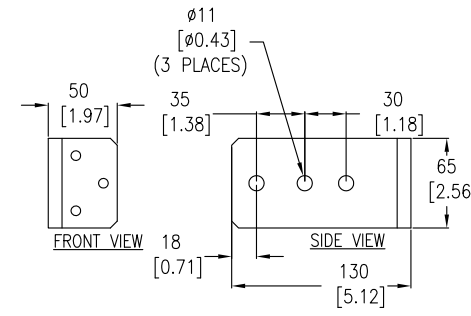
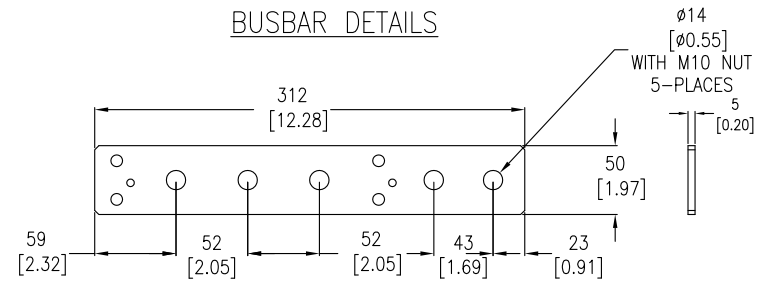
CB2 DETAILS

Voltage (V)	UPS Rating (kVA)	Trip Setting (A)	
		I _r	I _m
380/400/415	250	420	1500 (Fixed)
	300	420	
	400	480	
	500	600	

NOTES:

1. INSTALLATION SHALL COMPLY WITH ALL APPLICABLE NATIONAL, STATE AND LOCAL ELECTRICAL REGULATIONS.
2. REFER TO PRODUCT DOCUMENTATION FOR ADDITIONAL DETAILS PRIOR TO INSTALLATION AND SITE PREPARATION WORK.
3. ALL DIMENSIONS ARE IN MILLIMETERS [INCHES].
4. CABLE SIZES ARE BASED ON TABLE B.52.5 OF IEC 60364-5-52 WITH THE FOLLOWING ASSERTIONS:
 - a) 90°C CONDUCTORS.
 - b) AN AMBIENT TEMPERATURE OF 30°C [86°F].
 - c) USE OF COPPER CONDUCTORS.
 - d) INSTALLATION METHOD 'c'
 IF THE AMBIENT TEMPERATURE IS GREATER THAN 30°C [86°F], LARGER CONDUCTORS ARE TO BE SELECTED IN ACCORDANCE WITH THE CORRECTION FACTORS OF THE IEC.
5. SOME STRUCTURAL DETAILS HAVE BEEN OMITTED FOR THE PURPOSE OF CLARITY.
6. FOR CONTROL INTERFACE DETAILS, REFER TO SYSTEM WIRING DIAGRAM.
- △ 7. REFER TO ABOVE TABLE FOR TRIP SETTINGS.

BUSBAR DETAILS



THIS DRAWING AND SPECIFICATIONS HEREIN ARE THE PROPERTY OF SCHNEIDER ELECTRIC AND SHALL NOT BE COPIED, REPRODUCED OR USED IN WHOLE OR IN PART, AS THE BASIS FOR THE MANUFACTURE OR SALE OF ITEMS WITHOUT WRITTEN PERMISSION FROM SCHNEIDER ELECTRIC. THIS DRAWING IS BASED UPON LATEST AVAILABLE INFORMATION AND IS SUBJECT TO CHANGE WITHOUT NOTICE.

Schneider Electric

TITLE: GALAXY VL
BATTERY BREAKER BOX 100-500kW, 400V
WITH TWO CIRCUIT BREAKERS
INTERNAL VIEWS

PROJECT: SUBMITTAL DRAWINGS SHEET 2 OF 2

DWG NO: GVBBB630EL-2CB

DRAWN: K NAGENDRA 14-MAY-20

ENGINEER: TERRY HU 14-MAY-20

APPROVED: ALICE DU 14-MAY-20

REV: 0

FIRST

ANGLE

PROJECTION