

# EVlink Pro AC

## Modbus

### Connectivity Guide

GEX1969300-06  
03/26



# Legal Information

The Schneider Electric brand and any trademarks of Schneider Electric SE and its subsidiaries referred to in this guide are the property of Schneider Electric SE or its subsidiaries. All other brands may be trademarks of their respective owners.

This guide and its content are protected under applicable copyright laws and furnished for informational use only. No part of this guide may be reproduced or transmitted in any form or by any means (electronic, mechanical, photocopying, recording, or otherwise), for any purpose, without the prior written permission of Schneider Electric.

Schneider Electric does not grant any right or license for commercial use of the guide or its content, except for a non-exclusive and personal license to consult it on an "as is" basis. Schneider Electric products and equipment should be installed, operated, serviced, and maintained only by qualified personnel.

As standards, specifications, and designs change from time to time, information contained in this guide may be subject to change without notice.

To the extent permitted by applicable law, no responsibility or liability is assumed by Schneider Electric and its subsidiaries for any errors or omissions in the informational content of this material or consequences arising out of or resulting from the use of the information contained herein.

As part of a group of responsible, inclusive companies, we are updating our communications that contain non-inclusive terminology. Until we complete this process, however, our content may still contain standardized industry terms that may be deemed inappropriate by our customers.

---

# Table of Contents

|                                      |    |
|--------------------------------------|----|
| Safety Information.....              | 5  |
| About the Book .....                 | 6  |
| Safety Precautions.....              | 7  |
| Product Family.....                  | 8  |
| Supported Commands .....             | 9  |
| EVlink Pro AC Modbus Interface ..... | 10 |
| Registers .....                      | 11 |
| Vendor Error Codes .....             | 15 |



# Safety Information

## Important Information




Read these instructions carefully, and look at the equipment to become familiar with the device before trying to install, operate, service, or maintain it. The following special messages may appear throughout this documentation or on the equipment to warn of potential hazards or to call attention to information that clarifies or simplifies a procedure.



The addition of this symbol to a “Danger” or “Warning” safety label indicates that an electrical hazard exists which will result in personal injury if the instructions are not followed.



This is the safety alert symbol. It is used to alert you to potential personal injury hazards. Obey all safety messages that follow this symbol to avoid possible injury or death.

|  |
|--|
|  <b>DANGER</b>                        |
| <b>DANGER</b> indicates a hazardous situation which, if not avoided, <b>will result in</b> death or serious injury.    |
|  <b>WARNING</b>                      |
| <b>WARNING</b> indicates a hazardous situation which, if not avoided, <b>could result in</b> death or serious injury.  |
|  <b>CAUTION</b>                     |
| <b>CAUTION</b> indicates a hazardous situation which, if not avoided, <b>could result in</b> minor or moderate injury. |
| <b>NOTICE</b>  |
| <b>NOTICE</b> is used to address practices not related to physical injury.   |

## Please Note

Electrical equipment should be installed, operated, serviced, and maintained only by qualified personnel. No responsibility is assumed by Schneider Electric for any consequences arising out of the use of this material.

A qualified person is one who has skills and knowledge related to the construction and operation of electrical equipment and its installation, and has received safety training to recognize and avoid the hazards involved.

# About the Book

## Purpose of this Document

The purpose of this document is to guide you with the connectivity of EVlink Pro AC system communicating through Modbus TCP.

## Document Version History

| Document Reference–Revision | Release Date  | Software Version | Evolution   |
|-----------------------------|---------------|------------------|---|
| GEX1969300–06               | Janvier 2026  |                  | Update information about register 4004  |
| GEX1969300–05               | November 2024 | 1.4.0            | Update error code   |
| GEX1969300–04               | June 2023     | 1.3.0            | Registers between 2999 and 3222 are reserved.<br><br>Registers between 4000 and 4079 are also reserved.<br><br>If you read these registers, value <b>0xFFFF</b> is automatically sent back. |
| GEX1969300–03               | April 2023    | 1.2.1            | Exception code <b>Illegal data address</b> is returned when a read request is made to an invalid address.   |
| GEX1969300–02               | March 2023    | 1.2.1            | All Modbus addresses from 1211 to 1213 and from 4003 to 4011 have been incremented by 1.  |
| GEX1969300–01               | November 2022 | 1.1.6            |   |
| GEX1969300–00               | May 2022      |                  | Document creation   |

## Terminology

| Anacronym | Designation   |
|-----------|---|
| EVSE      | Electrical Vehicle Supply Equipment (charging station compliant with OCPP standard)                         |
| EVCE      | Electrical Vehicle Charging Expert  |
| OCPP      | Open Charge Point Protocol (communication protocol used between the charging stations and a central system) |

## Related Documents

| Document Title                       | Document Reference–<br>Revision | Author                  | Release Date | Link  |
|--------------------------------------|---------------------------------|-------------------------|--------------|---|
| EVlink Pro AC<br>Installation Guide  | NNZ1940301                      | Schneider<br>Electric   | 01/2022      | <a href="https://www.se.com/ww/en/download/document/NNZ1940301/">https://www.se.com/ww/en/download/document/NNZ1940301/</a> |
| EVP3MM<br>Modem<br>Instruction Sheet | NNZ26782                        | Schneider<br>Electric   | 09/2021      | <a href="https://www.se.com/ww/en/download/document/NNZ2678201/">https://www.se.com/ww/en/download/document/NNZ2678201/</a> |
| Open Charge<br>Point Protocol<br>1.6 | 1.6                             | Open Charge<br>Alliance | 12/2019      | <a href="https://www.openchargealliance.org/">https://www.openchargealliance.org/</a>                                       |



# Safety Precautions

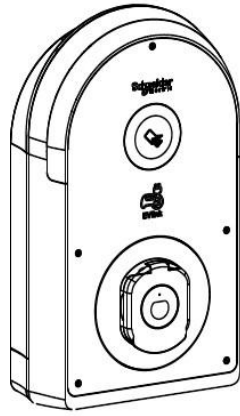
## **NOTICE**

### **HAZARD OF INCORRECT USE**

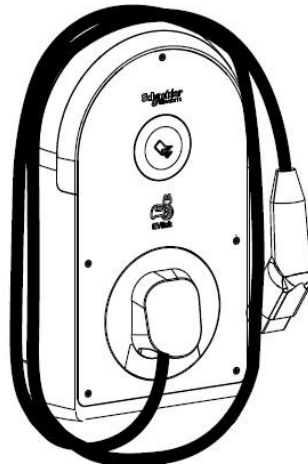
- This document contains general descriptions and/or general technical specifications of the products mentioned. It cannot be used to determine the suitability or reliability of these products for specific user applications. It is the responsibility of each user or integrator to conduct the appropriate risk analysis in full, assessing and testing products as regards the application in which they will be used and the execution of this application. Neither Schneider Electric nor any of its affiliated companies or subsidiaries can be held responsible for incorrect use of the information contained in this document. If you have any suggestions for improvements or correction, or have found errors in this publication, please notify us.
- All relevant state, regional, and local safety regulations must be observed when installing and using this product. For reasons of safety and to ensure compliance with documented system data, only the manufacturer should perform repairs to components. When equipment is used for applications with technical safety requirements, follow the relevant instructions.

**Failure to follow these instructions can result in equipment damage.**

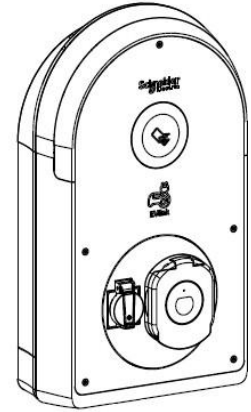
# Product Family



Charging stations with a T2S socket



Charging stations with an attached cable

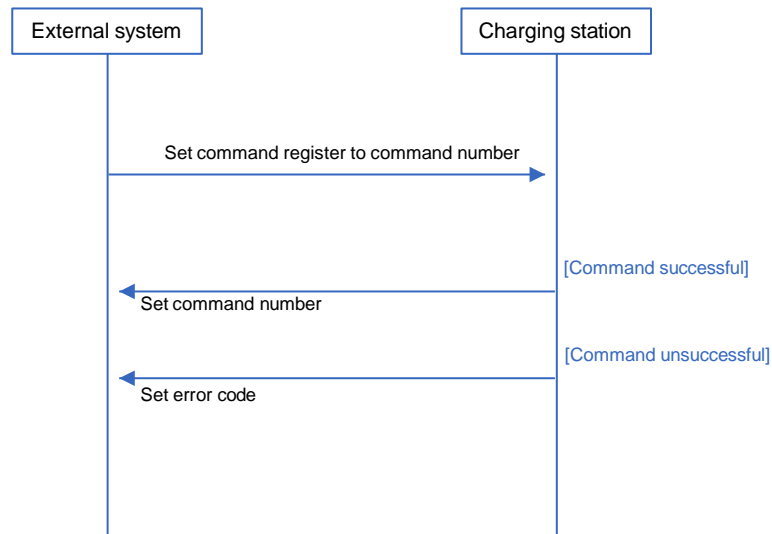


Charging stations with a T2S socket and a domestic socket

# Supported Commands

## Command

Command sequence between external system and charging station:

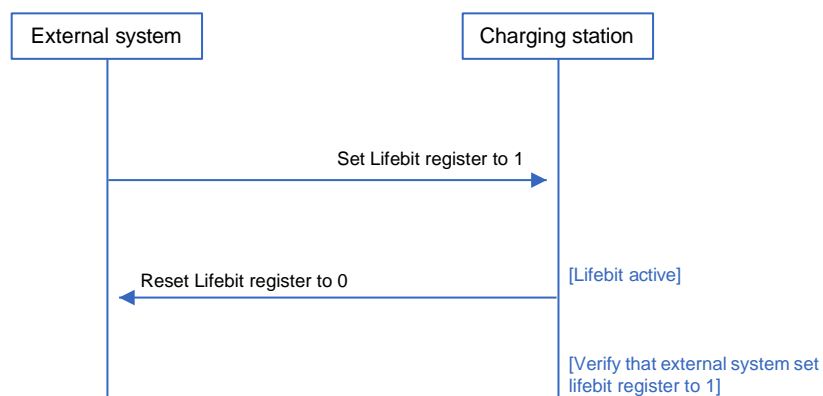


Commands list:

- 3 = STOP\_CHARGE = command that stops an ongoing charging session.
- 7 = SUSPEND\_CHARGE = command that suspends an ongoing charging session.
- 8 = RESTART\_CHARGE = command that restarts a suspended charging session.
- 9 = REBOOT = command that restarts the charging station.
- 40 = SET\_AVAILABLE = command that switches charging station to available status.
- 41 = SET\_UNAVAILABLE = command that switches charging station to unavailable status. If a charge is in progress, then charging station will turn unavailable at the end of the charging session.

## Lifebit

The Lifebit data allows the monitoring of the communication between external system and charging station, it is activated as described in the following sequence:



To deactivate the Lifebit data, the external system sets Lifebit data register to 2.

When activated, Modbus communication is considered as lost if Lifebit data is not refreshed within configured communication timeout.

## EVlink Pro AC Modbus Interface

EVlink Pro AC Modbus interface can be used to limit the charging power of the charging station.

This limitation is managed as follows:

- The external system writes current setpoint at address 4004. The maximum current setpoint sent by the charging station to the vehicle is limited by this value. Any setpoint change is considered with max. delay of 15 seconds.
- Additionally, in case of communication loss between the charging station and the external system, a default current limitation is applied: this limitation is set by writing register 4005 for single phase charging, and 4006 for triphase charging.
- The Server ID is 255.

**NOTE:** The detection of communication loss is managed through the Lifebit data, page 9.

# Registers

**NOTE:** A request to read a register address that is not in the following table triggers the **Illegal data address** exception code.

The table below contains the list of registers accessible to the client on base 0.

| Register name       | Address | RW/RO | Range    | Type    | Unit | Comment  |
|---------------------|---------|-------|----------|---------|------|--|
| EV state            | 1       | RO    | [0; 11]  | uint16  | -    | State of the vehicle S1 (EV is connected) and S2 (load is authorized) + detected error<br>0: State E: 0V<br>1: State F: Not available (-12V)<br>2: State A1: Available, not ready to charge (12V)<br>3: State B1: EV connected, not ready to charge (9V)<br>4: State C1: Charging EV, stopping charge requested by EVSE (6V)<br>5: State D1: Charging EV with ventilation required, stopping charge requested by EVSE (3V)<br>6: State A2: Available, ready to charge (12V PWM)<br>7: State B2: EV connected, ready to charge (9V PWM)<br>8: State C2: Charging EV (6V PWM)<br>9: State D2: Charging EV with ventilation required (3V PWM)<br>10: State Control Pilot Wire invalid<br>11: State Control Pilot Wire Symetric - Fault on the control circuit |
| OCPP status         | 150     | RO    | [0; 9]   | uint16  | -    | OCPP state of the charging station<br>0: Init<br>1: Available<br>2: Preparing<br>3: Charging<br>4: SuspendedEV<br>5: SuspendedEVSE<br>6: Finishing<br>7: Reserved<br>8: Unavailable<br>9: Faulted  |
| EV presence         | 1150    | RO    | [0; 1]   | uint16  | -    | Updated only when not charging<br>0: EV not present<br>1: EV present   |
| Major version digit | 1212    | RO    | NA       | uint16  | -    | Global release version   |
| Minor version digit | 1213    | RO    | NA       | uint16  | -    | Global release version   |
| Build version digit | 1214    | RO    | NA       | uint16  | -    | Global release version   |
| Current Phase 1     | 2999    | RO    | [0; Max] | float32 | A    | Current on phase 1   |
| Current Phase 2     | 3001    | RO    | [0; Max] | float32 | A    | Current on phase 2   |
| Current Phase 3     | 3003    | RO    | [0; Max] | float32 | A    | Current on phase 3   |

| Register name           | Address | RW/RO | Range                | Type    | Unit  | Comment   |
|-------------------------|---------|-------|----------------------|---------|-------|---|
| Current Phase AVG       | 3009    | RO    | [0; Max]             | float32 | A     | Average current   |
| Voltage Phase 1         | 3027    | RO    | [0; Max]             | float32 | V     | Voltage on phase 1  |
| Voltage Phase 2         | 3029    | RO    | [0; Max]             | float32 | V     | Voltage on phase 2  |
| Voltage Phase 3         | 3031    | RO    | [0; Max]             | float32 | V     | Voltage on phase 3  |
| Voltage Phase AVG       | 3035    | RO    | [0; Max]             | float32 | V     | Average voltage   |
| Power Active Phase 1    | 3053    | RO    | [Min; Max]           | float32 | kW    | Active power on phase 1   |
| Power Active Phase 2    | 3055    | RO    | [Min; Max]           | float32 | kW    | Active power on phase 2   |
| Power Active Phase 3    | 3057    | RO    | [Min; Max]           | float32 | kW    | Active power on phase 3   |
| Power Active Phase TOT  | 3059    | RO    | [Min; Max]           | float32 | kW    | Total active power  |
| Power Reactive TOT      | 3067    | RO    | [Min; Max]           | float32 | kVAR  | Total reactive power  |
| Power Apparent TOT      | 3075    | RO    | [Min; Max]           | float32 | kVA   | Total apparent power  |
| Power factor            | 3083    | RO    |                      | float32 | -     | Power factor  |
| Frefuence               | 3109    | RO    |                      | float32 | Hz    | Frequency   |
| Energy Active TOT       | 3203    | RO    | [0; Max]             | int64   | Wh    | Total active energy counter   |
| Energy Reactive TOT     | 3219    | RO    | [0; Max]             | int64   | kVARh | Total reactive energy counter   |
| Lifebit                 | 4000    | RW    | {0; 1; 2}            | uint16  | -     | Lifebit data enables monitoring of communication between the external system and the charging station. Refer to Lifebit data, page 9. |
| Set command             | 4001    | RW    | {3; 7; 8; 9; 40; 41} | uint16  | -     | Set remote command. Refer to Set command, page 9.   |
| Command status          | 4002    | RO    |                      | uint32  | -     | Previous remote command status  |
| Set Point               | 4004    | RW    | [0 32]               | uint16  | A     | Remote energy management setpoint in Amps managed by Modbus only.<br>99: No setpoint defined by Modbus, reset only at charger startup |
| Degraded Set Point Mono | 4005    | RO    | [0 32]               | uint16  | A     | Degraded setpoint applied when the Modbus communication is lost (configured via eSetup)   |
| Degraded Set Point Tri  | 4006    | RO    | [0 32]               | uint16  | A     | Degraded setpoint applied when the Modbus communication is lost (configured via eSetup)   |
| Contacto charging time  | 4007    | RO    |                      | uint32  | s     | Current charging time (duration since contactor closed)   |
| Session charging time   | 4009    | RO    |                      | uint32  | s     | Current session charging time (duration since transaction started)  |

|                 |      |    |   |        |   |  |
|-----------------|------|----|---|--------|---|--|
| Last stop cause | 4011 | RO | {1; 2; 3; 4; 5;<br>6; 7; 8; 9; 10;<br>11} | uint16 | - | Reason of last charge session ending (or<br>charge session start rejection)<br><br>0: None<br>1: EmergencyStop<br>2: EVDisconnected<br>3: HardReset<br>4: Local<br>5: Other<br>6: PowerLoss<br>7: Reboot<br>8: Remote<br>9: SoftReset<br>10: UnlockCommand<br>11: DeAuthorized |
|-----------------|------|----|---|--------|---|--|

| Register name                     | Address | RW/RO | Range    | Type   | Unit | Comment   |
|-----------------------------------|---------|-------|----------|--------|------|---|
| Session energy                    | 4012    | RO    | [0; Max] | uint32 | Wh   | Consumed energy during charging session               |
| Error group bitfield              | 4020    | RO    |          | uint32 | -    | Currently raised error groups (one bit per group)     |
| Error code bitfield               | 4022    | RO    |          | uint32 | -    | Currently raised error codes (one bit per error)      |
| Last event n°0 - event code       | 4024    | RO    |          | uint16 | -    | Last event n°0 code                                   |
| Last event n°0 - event start time | 4025    | RO    | Seconds  | uint16 | -    | Last event n°0 start time                             |
| Last event n°0 - event end time   | 4026    | RO    | Seconds  | uint16 | -    | Last event n°0 end time                               |
| Last event n°1 - event code       | 4027    | RO    |          | uint16 | -    | Last event n°1 code                                   |
| Last event n°1 - event start time | 4028    | RO    | Seconds  | uint16 | -    | Last event n°1 start time                             |
| Last event n°1 - event end time   | 4029    | RO    | Seconds  | uint16 | -    | Last event n°1 end time                               |
| Last event n°2 - event code       | 4030    | RO    |          | uint16 | -    | Last event n°2 code                                   |
| Last event n°2 - event start time | 4031    | RO    | Seconds  | uint16 | -    | Last event n°2 start time                             |
| Last event n°2 - event end time   | 4032    | RO    | Seconds  | uint16 | -    | Last event n°2 end time                               |
| Last event n°3 - event code       | 4033    | RO    |          | uint16 | -    | Last event n°3 code                                   |
| Last event n°3 - event start time | 4034    | RO    | Seconds  | uint16 | -    | Last event n°3 start time                             |
| Last event n°3 - event end time   | 4035    | RO    | Seconds  | uint16 | -    | Last event n°3 end time                               |
| EVSE Model                        | 4040    | RO    |          | Hex    | -    | EVSE model (2 characters per register)                |
| EVSE Model                        | ...     | RO    |          | Hex    | -    | EVSE model (2 characters per register)                |
| EVSE Model                        | 4049    | RO    |          | Hex    | -    | EVSE model (2 characters per register)                |
| EVSE Commercial Reference         | 4060    | RO    |          | Hex    | -    | EVSE commercial reference (2 characters per register) |
| EVSE Commercial Reference         | ...     | RO    |          | Hex    | -    | EVSE commercial reference (2 characters per register) |
| EVSE Commercial Reference         | 4069    | RO    |          | Hex    | -    | EVSE commercial reference (2 characters per register) |

All exchanged data through Modbus interface is refreshed every second.

The table below contains the list of Modbus data formats.

| Format Type        | Description   |
|--------------------|---|
| SINT16             | A 16-bit signed value in 2-1 (or big ENDIAN) format. The high-order byte is first, the low-order byte is second.  |
| UINT16             | A 16-bit unsigned value in 2-1 (or big ENDIAN) format. The high-order byte is first, the low-order byte is second.  |
| SINT32 or S32-4321 | A 32-bit signed value returned in two consecutive 16-bit registers. The high-order word is returned in the first register, the low-order word in the second register. The 4 bytes are returned in 4-3-2-1 (or big ENDIAN) format.         |
| UINT32 or U32-4321 | A 32-bit unsigned value returned in two consecutive 16-bit registers. The high-order word is returned in the first register, the low-order word in the second. The 4 bytes are returned in 4-3-2-1 (or big ENDIAN) format.                |
| S32-2143           | A 32-bit signed value returned in two consecutive 16-bit registers. Contrary to S32_4321, the high-order word is returned in the second register, the high-order word in the first register. The 4 bytes are returned in 2-1-4-3 format.  |
| U32-2143           | A 32-bit unsigned value returned in two consecutive 16-bit registers. Contrary to U32_4321, the high-order word is returned in the second register, the low-order word in the first register. The 4 bytes are returned in 2-1-4-3 format. |

| Format Type  | Description  |
|--|--|
| S32-MFP or S32-M10k-4321   | A 32-bit signed value returned in two consecutive 16-bit registers. The word stored in the first 16-bit register is multiplied by 10000 and added to the word stored in the second 16-bit register. Also known as <b>signed Modulo 10000</b> .   |
| U32-MFP or U32-M10k-4321   | A 32-bit unsigned value returned in two consecutive 16-bit registers. The word stored in the first 16-bit register is multiplied by 10000 and added to the word stored in the second 16-bit register. Also known as <b>unsigned Modulo 10000</b> or <b>mod-10K</b> .   |
| S32-M10k-2143  | A 32-bit signed value returned in two consecutive 16-bit registers. Contrary to S32_M10k_4321, the word stored in the second 16-bit register is multiplied by 10000 and added to the word stored in the first 16-bit register.   |
| U32-M10k-2143  | A 32-bit unsigned value returned in two consecutive 16-bit registers. Contrary to U32_M10k_4321, the word stored in the second 16-bit register is multiplied by 10000 and added to the word stored in the first 16-bit register.   |
| S48-M10k-21-65   | A 48-bit signed value returned in three consecutive 16-bit registers. $R3 \times 10,000^2 + R2 \times 10,000 + R1$ , where R3 is the last register and R1 is the first register. Each registers range is -9,999 to +9,999.   |
| U48-M10k-21-65   | A 48-bit unsigned value returned in three consecutive 16-bit registers. $R3 \times 10,000^2 + R2 \times 10,000 + R1$ , where R3 is the last register and R1 is the first register. Each registers range is 0 to +9,999.  |
| S64-M10k-21-87   | A 64-bit signed value returned in four consecutive 16-bit registers. $R4 \times 10,000^3 + R3 \times 10,000^2 + R2 \times 10,000 + R1$ , where R4 is the last register and R1 is the first register. Each registers range is -9,999 to +9,999.   |
| U64-M10k-21-87   | A 64-bit unsigned value returned in four consecutive 16-bit registers. $R4 \times 10,000^3 + R3 \times 10,000^2 + R2 \times 10,000 + R1$ , where R4 is the last register and R1 is the first register. Each registers range is 0 to +9,999.  |
| S64-87-21  | A 64-bit signed value returned in four consecutive 16-bit registers. The highest order word is returned in the first register, the lowest order word in the fourth. The 8 bytes are returned in 8-7-6-5-4-3-2-1 (or big ENDIAN) format.  |
| U64-87-21  | A 64-bit unsigned value returned in four consecutive 16-bit registers. The highest order word is returned in the first register, the lowest order word in the fourth. The 8 bytes are returned in 8-7-6-5-4-3-2-1 (or big ENDIAN) format.  |
| S64-21-87  | A 64-bit signed value returned in four consecutive 16-bit registers. The highest order word is returned in the fourth register, the lowest order word in the first. The 8 bytes are returned in 2-1-4-3-6-5-8-7 (or little ENDIAN) format.   |
| U64-21-87  | A 64-bit unsigned value returned in four consecutive 16-bit registers. The highest order word is returned in the fourth register, the lowest order word in the first. The 8 bytes are returned in 2-1-4-3-6-5-8-7 (or little ENDIAN) format.   |
| S16-1-15   | A 16-bit signed value. Bits 1 to 15 bits are unsigned data. If bit 16 is 0, the value is positive, if bit 16 is 1, the value is negative.  |
| IEEEFloat or F32-4321  | A 32-bit IEEE floating point value returned in two consecutive 16-bit registers. The high-order word is returned in the first register and the low order word in the second. The 4 bytes are returned in 4-3-2-1 format.   |
| SwappedFloat or F32-2143   | A 32-bit IEEE floating point value returned in two consecutive 16-bit registers. Contrary to F32_4321, the high-order word is returned in the second register and the low order word in the first. The 4 bytes are returned in 2-1-4-3 format.   |
| MaskedBool or PackedBool   | A 16-bit value that is interpreted according to the bit pattern described by the Mask attribute. Bits exposed by the mask can be read or written without affecting the value of other bits. Unmasked bits are interpreted as 0 on a read and are unaffected on a write. Undeclared bits of a mask are interpreted as unmasked (i.e., mask="0x7F" is interpreted as 0x007F). The value that is read or written is determined by using enumeration ordinals, described below. If used for read-only Boolean data, enumerations are not required. If no mask is specified, all bits are relevant. |
| PF-Nexus   | A 16-bit unsigned value, range 0 to 3999, representing 3 decimal places of accuracy.   |
| BCD (Binary Coded Decimal)   | A number is expressed as a sequence of decimal digits and then each decimal digit is encoded as an 8-bit binary number. For example, decimal 92 is encoded as 00001001 00000010.   |
| The following data types can have their length specified by the <b>Number of Registers to Request</b> setting. |  |
| Packed BCD   | A number is expressed as a sequence of decimal digits and then each decimal digit is encoded as a 4-bit binary number (nibble). For example, decimal 92 is encoded as 1001 0010.   |
| ASCII  | A sequence of bytes representing the ASCII character set. Each word stores two ASCII characters. Trailing spaces are removed.  |
| ASCII-Reverse  | Same as ASCII except every second character is in the reverse order.   |



# Vendor Error Codes

The table below details all error codes that can be raised by the charging station.

| Generic error name          | Specific error name                     | Error code | Error description  | OCPP code            |
|-----------------------------|---|------------|--|----------------------|
| Software configuration      | Software downgrade                      | 1.1        | Charging station detects that the software version is lower than expected.   | OtherError           |
| Hardware configuration      | Mother board issue                      | 2.0        | Issue with EVSE hardware.  | InternalError        |
|                             | Physical derating issue                 | 2.1        | Invalid physical derating configuration OR change of physical derating configuration during charge. Configure the microswitch according to the <i>EVlink Pro AC Installation Guide</i> (NNZ1940301). | InternalError        |
|                             | Plug issue 6mA                          | 2.2        | 6mA plug missing.  | InternalError        |
|                             | Plug issue 15118                        | 2.3        | 15118 plug missing.  | InternalError        |
|                             | Issue on temperature sensor             | 2.4        | Issue with the temperature sensor. Only for Eichrecht commercial references.   | InternalError        |
| Upstream Protection Devices | MNX tripping                            | 3.0        | Trip of MNX / Contactor discordance.   | OverCurrentFailure   |
| RDC DD                      | RDC DD (6mA) measurement board error    | 4.0        | RDC DD internal device reports an internal error.  | InternalError        |
| 6mA detection               | 6mA DC leakage detected                 | 5.0        | DC leakage value higher than 6mA.  | OtherError           |
| Metering                    | Input voltage issue                     | 6.0        | Phase synchronization defect or input voltage or frequency error.  | InternalError        |
|                             | Internal metering card issue            | 6.1        | At least one metering fault has been detected.   | InternalError        |
| PowerMeter                  | Internal power meter communication loss | 7.0        | Loss of communication with Modbus power meter for metering (either internal or external), for 3 consecutive unsuccessful attempts.   | InternalError        |
|                             | Dataset issue                           | 7.1        | Verification of the dataset signature failed or Others dataset error.  | InternalError        |
| Bluetooth                   | Bluetooth communication issue           | 8.0        | Issue with Bluetooth processor: communication lost or update impossible.   | InternalError        |
| Badge reader                | Badge reader issue                      | 9.0        | Loss of communication with the RFID, NFC reader.   | ReaderFailure        |
| EV issues                   | EV issue: Control Pilot (CP)            | 10.0       | Communication fault with a Mode 3 / T2 vehicle ( <b>CP</b> (Control Pilot) error).   | EVCommunicationError |
|                             | Plug Presence (PP) conformity           | 10.1       | Cable status wrong (the value of the coding resistor "PP" is wrong).   | EVCommunicationError |
|                             | EV issue: short-circuit CPW             | 10.2       | Charging fault short-circuit on Control Pilot Wire.  | EVCommunicationError |
| Outlet                      | Lock/Unlock cable failure               | 11.0       | Wrong handling during the plug/unplug of the socket, or motor blocked.   | ConnectorLockFailure |
| Contactor                   | Contactor discordance                   | 12.0       | Contactor is not in the requested state: welded or blocked in open position.   | InternalError        |
| Phase discordance           | Load three-phase compliancy             | 13.0       | Three phases charging not allowed in simplified mode 3.  | OtherError           |
| Overconsumption             | EV overconsumption                      | 14.0       | Overcurrent or overload charging fault due to EV.  | OverCurrentFailure   |

| Generic error name      | Specific error name   | Error code | Error description  | OCPP code  |
|-------------------------|---|------------|--|------------|
| Ventilation not allowed | Ventilation not allowed                                     | 15.0       | Battery gas leakage risk. Car asking ventilation that is not compatible with our products. | OtherError |
| EVCE                    | EVCE communication loss                                     | 16.0       | Supervision communication lost between EV Charging Expert and the charging station.        | OtherError |
| OCPP                    | Supervision (OCPP) issue                                    | 17.0       | Communication or configuration of Supervision (OCPP) issue.                                | OtherError |
| EM                      | Dynamic Energy Management communication loss: TIC or Modbus | 18.0       | Communication lost with external device for energy management (TIC or Modbus).             | OtherError |
| Temperature             | Temperature out of the authorized range                     | 19.0       | Temperature too high or too low. Only for Eichrecht commercial references.                 | OtherError |

Schneider Electric  
35 rue Joseph Monier  
92500 Rueil Malmaison  
France

+ 33 (0) 1 41 29 70 00

[www.se.com](http://www.se.com)

As standards, specifications, and design change from time to time,  
please ask for confirmation of the information given in this publication.

© 2022 – 2023 Schneider Electric. All rights reserved. GEX1969300–05