



Easy UPS On-Line

Short Depth, dual-certified UPS

Maximize uptime, and stay in control of your energy needs with APC Easy UPS Online range of 3/6kVA UPS. The power module and battery bank feature a compact design for confined spaces and engineered to excel with dual certifications.

This online double conversion UPS is ideal for containerized Energy Storage Systems (ESS) and other short-depth applications.

That's Certainty in a Connected World.



se.com

Life Is On

Schneider
Electric

APC Easy UPS On-Line 3/6kVA

Achieve reliable power management with the APC Easy UPS Online series, featuring options in 3kVA and 6kVA for 230V applications, and a dedicated 3kVA UPS for 120V systems. Each unit is complemented by battery banks available in 72Vdc and 192Vdc configurations, designed to enhance runtime and ensure reliable performance.



Dual Certification

Carries both CE and UL certifications, enabling us to provide a comprehensive ESS package

True on-line double-conversion

Maximizes performance, life, and reliability.

High Power Factor

More real output power in watts 0.9 PF

High Efficiency

Up to 90% efficiency in Online mode and 96% in ECO mode



Compact Design

Space saving design to fit in confined spaces in containerized solution (short depth & 5U height)

Cost – effective

Reduced TCO through optimal energy management

Remote Monitoring

Ensuring reliability with monitoring using AP9544



Extended Runtime

Extended runtime with up to 4 external battery packs caters the needs of long runtime applications..

Environmentally Robust

Wide temperature operating bandwidth and operating altitudes up to 3000m



APC Brand reliability

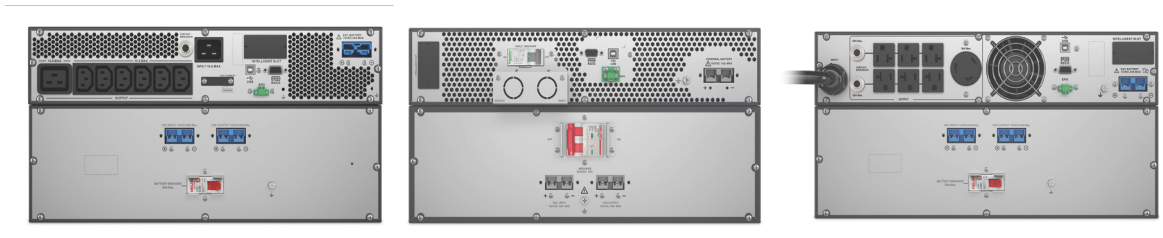
Rely on APC, market leader in UPS innovations, ensuring your critical systems remain powered and protected at all times.



Simplified Monitoring and Management

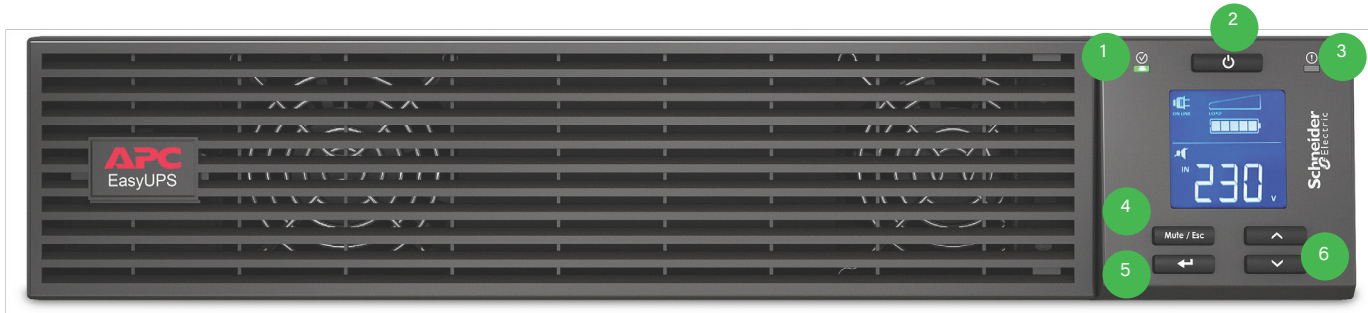
PowerChute™ Serial Shutdown software provides graceful unattended shutdown of servers and workstations using serial or USB cables and helps prevent data corruption and costly equipment damage.

Optional Network Management Card (part number AP9544 sold separately) supports network-based monitoring of Easy UPS On-Line.



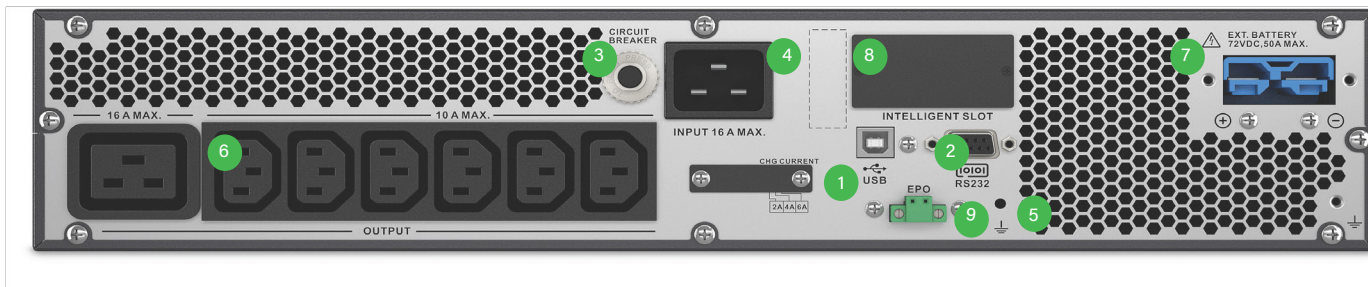
	3kVA 230V	6kVA 230V	3kVA 120V
UPS SKU#	SRV3KRILX901	SRV6KRILX901	SRV3KRALX901
Rated Power output	2700W	4800W	2700W
Compatible battery SKU#	SRV72RLBPX901	SRV192RLBPX901	SRV72RLBPX901

Intuitive LCD Display



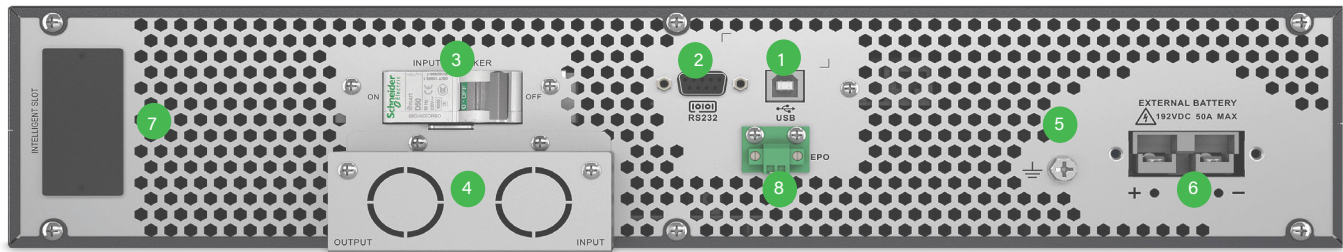
- 1. On/Off status:** Indicates power is ON
- 2. On/Off button:** Press to turn ON or OFF
- 3. Alert LED:** Flashes red when UPS has a notification or is in steady state when there is an alert
- 4. Mute/Esc button:** Mutes audible alarm and serves as the Escape key when in the sub menu display
- 5. Enter key:** Press to enter the display menus and choose options.
- 6. UP/Down arrows:** Navigate keys through the display menus

3kVA 230V : SRVPM3KRILX901



- 1. USB Port** – Provides management of the UPS via USB communication
- 2. Serial Port** – Provides management of the UPS via serial communication
- 3. Input Circuit Breaker** – easily resets when short circuit problem is resolved in the application
- 4. Input Terminal:** IEC 320 C20
- 5. Grounding Screw**
- 6. (6) IEC 60320 C13 + (1) IEC 60320 C19 Outlet**
- 7. Battery Connector**
- 8. Intelligent Card Slot**
- 9. EPO** – Emergency Power Off

6kVA 230V : SRVPM6KRILX901



1. **USB Port** – Provides management of the UPS via USB communication
2. **Serial Port** – Provides management of the UPS via serial communication
3. **Input Circuit Breaker** – easily resets when short circuit problem is resolved in the application
4. **Input & Output Terminal**
5. **Grounding Screw**
6. **Battery Connector**
7. **Intelligent Card Slot for management accessories**
8. **EPO** – Emergency Power Off

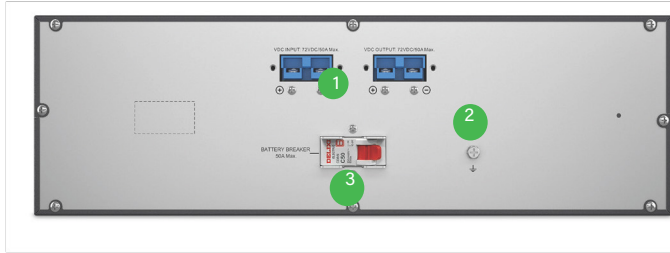
3kVA 120V : SRVPM3KRALX901



1. **Input terminal:** AC input Power cord
2. **Output Circuit breaker**
3. **Output terminal:** (6) NEMA 5-20R + (1) NEMA L5-30R
4. **USB Port** – Provides management of the UPS via USB communication
5. **Serial Port** – Provides management of the UPS via serial communication
6. **Emergency Power Off (EPO)**
7. **Grounding Screw**
8. **Battery Connector**
9. **Intelligent Card Slot**

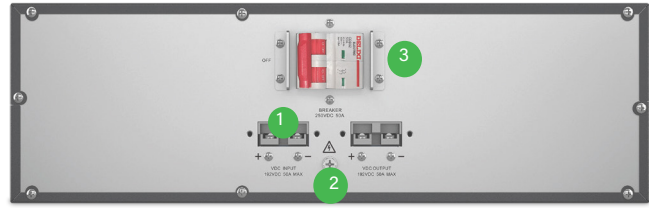
Battery Bank design

72Ah: SRV72RLBPX901
Compatible with 3kVA models



1. Battery Connector
2. Grounding Screw
3. Circuit Breaker

192Ah: SRV192RLBPX901
Compatible with 6kVA model



1. Battery Connector
2. Grounding Screw
3. Circuit Breaker

Runtime Estimates

Runtime estimates for 3000 VA and 6000 VA with extended battery bank(minutes)

UPS	Number of external battery packs	Capacity	Runtime in minutes at given load%			
			25%	50%	75%	100%
SRVPM3KRILX901 + SRV72RLBPX901	(1) Battery pack (default)	72V / 18Ah	73	31	18	12
	(2) Battery packs	72V / 36Ah	168	71	35	27
	(3) Battery packs	72V / 54Ah	242	120	54	50
	(4) Battery packs	72V / 72Ah	312	162	70	63
SRVPM6KRILX901 + SRV192RLBPX901	(1) Battery pack (default)	192V / 9Ah	46.5	20	11.5	7.5
	(2) Battery packs	192V / 18Ah	108	48	29	20
	(3) Battery packs	192V / 27Ah	175	78	48	34
	(4) Battery packs	192V / 36Ah	244	110	68	48
SRVPM3KRALX901 + SRV72RLBPX901	(1) Battery pack (default)	72V / 18Ah	55	21	12	7
	(2) Battery packs	72V / 36Ah	115	47	26	15
	(3) Battery packs	72V / 54Ah	175	71	40	23
	(4) Battery packs	72V / 72Ah	240	97	54	31

Ideal Applications



Energy Storage System (ESS)



Telecommunication



Computer Room

Easy UPS Management Solutions

PowerChute™ Serial Shutdown

For Graceful Unattended Shutdown of Servers and Workstations



Key Features

Convenience

- Initial Set-Up Wizard
- SMTP Authentication
- Password Security
- Secure Communication
- Multiple Language Support

Manageability

- Notification
- Data Logging
- Event Logging
- Run Command File
- Multiple Easy UPS Management

Protection

- Load Shedding
- Scheduling Capability
- Operating System Shutdown
- Sequenced Network Shutdown and Reboot
- Outlet Group Control

Compatibility

- System Event Log Integration
- Enterprise Management System Compatible
- PowerChute Serial Shutdown OS Compatibility

Energy Management

- Configurable energy costs
- CO2 emissions reporting
- Energy usage reporting
- Energy cost reporting

Graceful unattended shutdown of servers and workstations using serial or USB cables helps prevent data corruption and costly equipment damage. Learn More on apc.com/pcss.

Optional Easy UPS Network Management Card (AP9544)

Easy UPS Network Management Card (AP9544) allows for secure remote monitoring of an individual UPS via web browser or command line interface.

Key Features

Enhanced Security

- Secure Boot with Root of Trust
- Increased password security with stricter credentials and force password policy configurations
- 3-tier user access (read only, device and administrator)
- Secure access SSH, HTTPS (TLS 1.2)
- Secure file transfer (SCP)
- 2048-bit encryption key support (SSH/web)

Enhanced Performance

- 1 Gigabit Ethernet connection (RJ-45 10/100/1000 Base-T)
- Simultaneous multiple user login: Supports multiple sessions

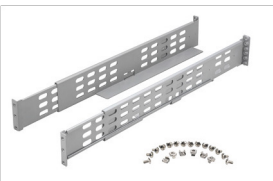
Enhanced User Experience and Troubleshooting

- Pre-loaded multiple language support
- Micro USB based console

For more information, visit apc.com/secure-nmc.



Management card: AP9544



Rail kit: SRVRK2

Management cards

- **AP9544**: Network management card for remote monitoring of UPS.
- **VGL9901I**: Dry contact card to monitor external triggers and initiate actions.
- **SRVSMB001**: Modbus card for communication with PCs through MODBUS protocol.

Rail kits

- **SRVRK1**: 700 mm depth rail kit. Can support rack mount installation for standard 19-inch rack equipment with maximum weight of 60 kg.
- **SRVRK2**: 900 mm depth rail kit. Can support rack mount installation for standard 19-inch rack equipment with maximum weight of 100 kg.

Technical Specification

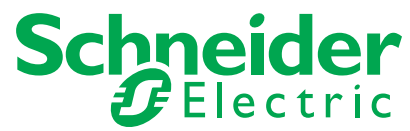
SKU technical specifications

Product feature	SRVPM3KRILX901	SRVPM6KRILX901	SRVPM3KRALX901
Power rating	3,000 VA / 2,700 W	6,000 VA / 4,800 W	3,000 VA / 2,700 W
Input			
Nominal input voltage	220V, 230V, 240V		120V
Input voltage range at full load (70% load)	180 – 300 V (160 – 300 V)	176 – 300 V (110 – 300 V)	87 – 150 V (67 – 150 V)
Input frequency	40 – 70 Hz auto-selecting		
Input connection	IEC 320 C20	(1) Hard wire 3-wire (1P+N+G)	NEMA L5-30P
Output			
Nominal output voltage	230 V (220 V, 240 V user selectable)		120 V (110 V, 115 V user-selectable)
Output frequency	50/60 Hz (+/- 3Hz)		
Topology	Double-conversion on-line		
Waveform type	Pure sine wave		
Efficiency: Double-conversion mode (typical)	Up to 90%	Up to 93.5%	Up to 90%
Efficiency: ECO mode (typical)	Up to 93%	Up to 96%	Up to 93%
Output connections	(6) IEC 320 C13; (1) IEC 320 C19	(1) Hard wire 3-wire (1P+N+G)	6 x NEMA 5-20R + 1x NEMA L5-30R
Battery and Runtime*			
Battery type	Sealed Maintenance Free Valve Regulated Lead Acid Battery (Leak Proof)		
Compatible Battery (external)	72VDC	192VDC	72VDC
Charging Current	2A (default) ,4A, 6A	1/2/3A (default)/4A ±10% adjustable	2A (default) ,4A
Runtime	as per battery runtime chart		
Communications and management			
Interface ports	Serial RS-232, USB (Type B), Intelligent Slot		
Control panel	LED indicators, multi-function LCD, status and display console		
Software	Yes, PowerChute Serial Shutdown		
Emergency power off (EPO)	Yes (NC contacts)		
Physical (without packaging)			
Rack height (U)	5U	8U	5U
Dimensions W x H x D (mm) Power Module	438 x 86 x 462 mm (2U)	438 x 88 x 515 mm (2U)	438 x 86 x 435 mm (2U)
Dimensions W x H x D (mm) Battery bank	438 x 133 x 460 mm (3U)	438 x 131 x 550 mm (2 x 3U)	438 x 131 x 460 mm (3U)
Net weight (kg) Power Module	10.6 kg	13.1 kg	11.1 kg
Net Weight (kg) Battery bank	40.8 kg	53 kg	40.8 kg
Environment			
Operating temperature	0 to 40 °C (0 to 50 °C with derated load)		
Relative humidity	0 to 95% non-condensing		
Operating elevation	0 – 2,000 m at 100% load (2,000 – 3,000 m: load capacity reduces @1% for every 100m increase in elevation)		
Audible noise at 1 m from unit	Less than 53 dBA	Less than 55 dBA	Less than 53 dBA
Internal protection code	IP20		
Conformance			
Regulatory approvals	UPS: IEC 62040-1, CB, CE, IEC 62040-2 & cTUVus UL 1778, Battery Pack: IEC 62040-1		
Standard warranty	2 years repair or replace		

All specifications are subject to change without prior notice.

* Runtime in the table are approximate only. All measurements taken with new, fully charged batteries, at typical environmental conditions, with no electrical input and balanced resistive load (PF = 1.0) output.

Life Is On



[se.com](https://www.se.com)

Schneider Electric

One Boston Place
Floor 27
Boston, MA 02108
United States

www.se.com