



Easy Rack Power Distribution

- Easy Basic Rack PDU
- Easy Metered Rack PDU with NMC3
- Easy Switched Rack PDU with NMC3
- Easy Metered-by-Outlet Rack PDU with APC NMC3 Integration



se.com

Life Is On





Make power distribution easy

The APC Easy Rack PDU is an easy-to-install, easy-to-use rack-mount PDU that helps manage power distribution to the equipment in the rack and provides monitoring and control functionalities.

Easy Basic Rack PDU

- More than a power strip, helps in reliable power distribution

Easy Metered Rack PDU with NMC3

- Real-time remote monitoring of connected loads
- User-defined alarms warn IT and data center managers of potential circuit overloads to prevent accidental power loss to critical equipment

Easy Switched Rack PDU with NMC3

- Metered functionality
- Switch on/off the connected power load remotely

Easy Metered-by-Outlet Rack PDU

- Enhanced security protocols and functions with APC NMC3 integration
- Network port sharing with CAN (controller area network) protocol
- Communication I/O up to 3 temperature/humidity sensors and 1 serial port
- Individual outlet level power metering
- User resettable energy (kWh) logs for capacity planning and energy efficiency initiatives

EPDU1xxxMBO ---> EPDU2xxxMBO
 EPDU1xxxSMBO ---> EPDU2xxxSMBO
 EPDU1xxxM ---> EPDU2xxxM
 EPDU1xxxS ---> EPDU2xxxS

Easy for installation

- Ultra-light weight, thanks to aluminum housing
- Supports both toolless mounting and bracket mounting
- Built-in input cord with industrial connector for vertical PDU
- Low profile in depth, more convenience for equipment installation

Easy for operation and maintenance

- User-friendly and simple web interface and LCD screen
- Support network port, easy for data communication
- Field-replaceable control module, easy for maintenance

Typical applications

- Small and medium data centers and computer rooms
- Colocation and large enterprise data centres
- Manufacturing facilities
- Telecommunication
- Commercial buildings
- Healthcare
- Transportation

Product feature by series

	Basic	Metered	Switched	Metered by Outlet	Metered by Outlet with Switching
	SEP61xxG	EPDU2xxxM	EPDU2xxxS	EPDU2xxxMBO	EPDU2xxxSMBO
Design feature					
Ultralow-profile, space-saving design	√	√	√	√	√
Hydraulic-magnetic circuit breakers (in units with 32A input current)	√	√	√	√	√
Environmental monitoring port for external temperature/humidity monitoring		√	√	√	√
Availability for regional outlet socket types	√				
Display and network management					
Full-featured network management capability via web and SNMP		√	√	√	√
User-interactive LCD display for local access		√	√	√	√
Network port sharing		16	16	16	16
Enhanced security with APC NMC3 integration and EcoStruxure™ Ready		√	√	√	√
Metering capability					
Metering accuracy		±1%	±1%	±1%	±1%
Active current measurements (amps)		√	√	√	√
Active power measurements, including volts, amps, real power (kW), and energy (kWh)		√	√	√	√
User-customizable alarms and warnings		√	√	√	√
Embedded log memory to record, review, and report		√	√	√	√
Individual outlet power metering				√	√
User access control with two levels		√	√	√	√
Outlet control					
Individual outlet remote power on/off control			√		√
Power-on sequencing and time delays with full user customization			√		√
Outlet level grouping (multiple outlets in the same or multiple units follow a single command)			√		√
User access control with two levels		√	√	√	√
Environmental					
Maximum operating temperature	60°C	50°C	50°C	50°C	50°C
Maintenance					
Warranty	2 year	2 year	2 year	2 year	2 year



APC Easy rPDU Basic

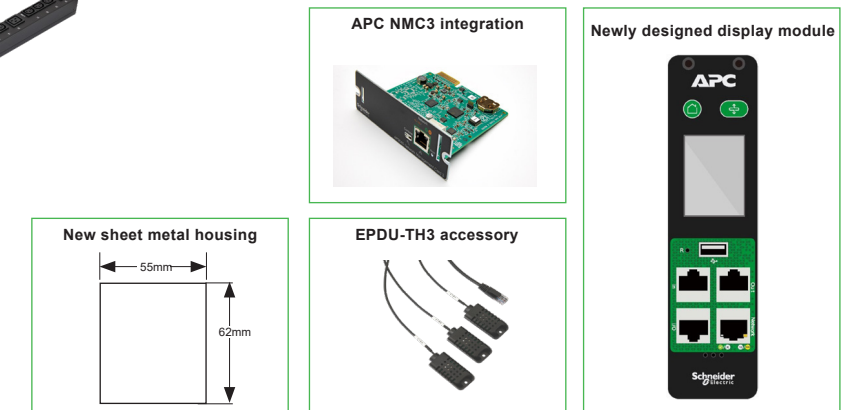
The APC Easy Rack PDU Basic provides remarkable power distribution at an accessible price point. For customers without large IT budgets or no IT staff, the rPDU brings affordability together with sustainability.



		SEP6104G NEW	SEP6113G NEW	SEP6116G NEW	SEP6117G NEW	SEP6123G NEW	SEP6127G NEW	SEP6147G NEW	SEP6157G NEW
Electrical	Nominal voltage	200-240VAC, 1PH	200-240VAC, 1PH	200-240VAC, 1PH	200-240VAC, 1PH	200-240VAC, 1PH	200-240VAC, 1PH	200/346-240/415 VAC, 3PH	200/346-240/415 VAC, 3PH
	Input circuit	10A	16A	16A	16A	32A	32A	16A (each phase)	32A (each phase)
	Input frequency	50/60Hz							
	Input connector	IEC60320 C14 input	14x SCHUKO	IEC60320 C20 inlet	IEC60309 (16A 230VAC L+N+PE) PLUG	IEC60309 (32A 230VAC L+N+PE)	IEC60309 (32A 230VAC L+N+PE) PLUG	IEC60309 (16A 400VAC 3P+N+PE)	IEC60309 (32A 400VAC 3P+N+PE)
	Input cord length	2m							
	Output voltage	230V, 1PH							
	Output receptacles	(16) SCHUKO, (1) C13	(16) SCHUKO	(8) C13	(20) C13, (4) C19	(21) SCHUKO, (10) Bank 1, (11) Bank 2	(20) C13, (4) C19	(36) C13, (6) C19	(30) C13, (12) C19
Physical	Circuit breakers	NA							
	Mount style	Vertical	Vertical	Horizontal	Vertical	Vertical	Vertical	Vertical	Vertical
	Width	482 mm	56 mm	442 mm	56 mm	56 mm	56 mm	56 mm	56 mm
	Height	44.45 mm	800 mm	44.45 mm	900 mm	1280 mm	1000 mm	1500 mm	1800 mm
	Depth	44.45 mm	56 mm	44.45 mm	56 mm	56 mm	56 mm	56 mm	56 mm
	Housing material	Aluminium							
Environmental	Toolless mounting	Yes							
	Color	Black							
	Operating temperature	-5° to +60°C							
	Operating humidity	5-95%							
Regulatory	Elevation operating/storage	0-3 000 m / 0-15 000 m							
	EMC	CE, followed by standard EN55035, EN55032, EN55024							
	Safety	CE TÜV, followed by standard EN/IEC62368-1							
	Environment	RoHS, REACH							
Package	Rackmounting brackets	M6x 12 mm screw (4 pieces), M6 cage nut (4 pieces)			M5x10 mm self-tapping screw (4 pieces), L bracket (2 pieces), included screw				
	Safety sheet	Safety sheet is printed and packaged with the product							
	Installation instructions	QR Code							
	Package dimensions L*W*H	570mm x 170 mm x 73 mm	960mm x 170mm x 126mm	570x170x73	1060mm x 170 mm x 126 mm	1440mm x 170 mm x 126 mm	1160mm x 170mm x 126mm	1660mm x 170mm x 126mm	1960mm x 170mm x 126mm
Warranty	Weight/shipping weight	0.6 kg/1.4 kg	1.35 kg/2.15 kg	0.55 kg/1.35 kg	1.9 kg/2.75 kg	2.4 kg/3.4 kg	2.4 kg/3.35 kg	2.8 kg/3.9 kg	4.85 kg/6.2 kg
		2 yrs							

Easy Metered Rack PDU with NMC3

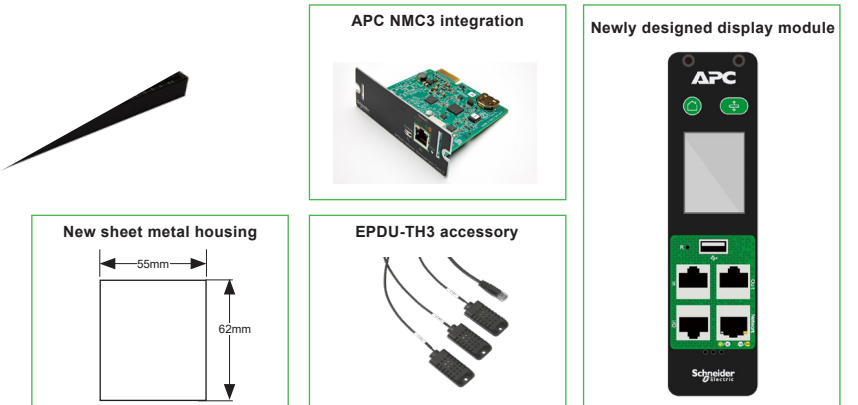
APC Easy Metered Rack PDU provides real-time remote monitoring of connected loads. User-defined alarms warn of potential circuit overloads before critical IT failures occur.



	EPDU2016M NEW	EPDU2116M NEW	EPDU2132M NEW	EPDU2216M NEW	EPDU2232M NEW	
Electrical	Nominal voltage	230 VAC, single-phase		400 VAC, three-phase		
	Input circuit	16 A		32 A		
	Input frequency	50/60 Hz		50/60 Hz		
	Input connector	IEC-320 C20 200–240 V inlet	IEC 309 16 A 2P+E	IEC 309 32 A 2P+E	IEC 309 16 A 3P+N+E	IEC 309 32 A 3P+N+E
	Input cord length	2.5 m	3 m		2 m	
	Output voltage	200–240 VAC, single-phase				
	Output receptacles	(8) C13	(18) C13 & (3) C19	(20) C13 & (4) C19	(21) C13 & (3) C19	(18) C13 & (6) C19
	Circuit breakers	NA		(2) 16 A 1-pole hydraulic-magnetic circuit breakers	NA	(6) 16 A 1-pole hydraulic-magnetic circuit breakers
Physical	Mount style	Horizontal (19" rack mountable)		Vertical		
	Width	482 mm	902 mm		62 mm	1506 mm
	Height	44.4 mm	902 mm		1175 mm	1506 mm
	Depth	44.4 mm				
	Housing material	Aluminum extrusion				
	Toolless mounting	NA			Yes	
	Color	Black				
User interface	Local user interface	LCD display, language: English				
	Local user control	2 buttons for scroll, select, and reset				
	Communication I/O	1 network port, 1 temperature/humidity port				
	Remote management capabilities	http/https, SNMP V1, V2, V3				
Environmental	Operating temperature	-5° to 50°C				
	Operating humidity	5–95% RH, non-condensing				
	Elevation operating/storage	0–3 000 m / 0–15 000 m				
Regulatory	EMC	CE, followed by standard EN55035, EN55032, EN55024				
	Safety	CE TÜV, followed by standard EN/IEC62368-1				
	Environment	RoHS, REACH				
Package	Rack-mounting brackets	M6x16 mm screw (4 pieces), M6 cage nut (4 pieces)	M5x10 mm self-tapping screw (4 pieces), L bracket (2 pieces), included screw			
	Safety sheet	Included				
	Installation instructions	Included				
	Package dimensions	560x150x80 mm	1320x160x110 mm		1660x160x110 mm	
	Weight/shipping weight	0.68 kg/1.32 kg	2 kg/3 kg 3 kg/4.48 kg	2.74 kg/3.26 kg		4.64 kg/5.48 kg
Accessory	EPDU-TH3 (must order separately)					
Warranty	1 year					

Easy Switched Rack PDU with NMC3

APC Easy Switched Rack PDU provides advanced load monitoring combined with remote on/off switching control of individual outlets for power cycling.



	EPDU2016S NEW	EPDU2116S NEW	EPDU2132S NEW	EPDU2216S NEW	EPDU2232S NEW	EPDU2232SX3620 NEW
Electrical	Nominal voltage	230 VAC, single-phase			400 VAC, three-phase	
	Input circuit	16 A		32 A	16 A	32 A
	Input frequency	50/60 Hz				
	Input connector	IEC-320 C20 200–240 V inlet	IEC 309 16 A 2P+E	IEC 309 32 A 2P+E	IEC 309 16 A 3P+N+E	IEC 309 32 A 3P+N+E
	Input cord length	2.5 m	3 m			2 m
	Output voltage	200–240 VAC, single-phase				
	Output receptacles	(8) C13	(20) C13 & (4) C19	(21) C13 & (6) C19	(18) C13 & (6) C19	(30) C13 & (6) C19
	Circuit breakers	NA	(2) 16 A 1-pole hydraulic-magnetic circuit breakers		NA	(6) 16 A 1-pole hydraulic-magnetic circuit breakers
Physical	Mount style	Horizontal (19" rack mountable)			Vertical	
	Width	482 mm	1738 mm			55 mm
	Height	44.4 mm				1794 mm
	Depth	200 mm				62 mm
	Housing material	Sheet metal				
	Toolless mounting	NA				Yes
	Color	Black				
User interface	Local user interface	LCD display, language: English				
	Local user control	2 buttons for scroll, select, and reset				
	Communication I/O	1 network port, 1 temperature/humidity port, 2RS485 port sharing connection				
	Remote management capabilities	http/https, SNMP V1, V2, V3				
Environmental	Operating temperature	-5° to 50°C				
	Operating humidity	5–95% RH, non-condensing				
	Elevation operating/storage	0–3 000 m / 0–15 000 m				
Regulatory	EMC	CE, followed by standard EN55035, EN55032, EN55024				
	Safety	CE TÜV, followed by standard EN/IEC62368-1				
	Environment	RoHS, REACH				
Package	Rack-mounting brackets	M6x16 mm screw (4 pieces), M6 cage nut (4 pieces)	M5x10 mm self-tapping screw (4 pieces), L bracket (2 pieces), included screw			
	Safety sheet	Included				
	Installation instructions	Included				
	Package dimensions	560x220x80 mm				1950x160x110 mm
	Weight/shipping weight	2.8 kg/3.6 kg	7.3 kg/8.5 kg	7.9 kg/9.0 kg	6.2 kg/7.78 kg	8.17 kg/9.45 kg
Accessory	EPDU-TH3 (must order separately)					
Warranty	2 years					

Easy Metered by Outlet Rack PDU with NMC3

Easy Metered by Outlet Rack PDU range is now upgraded with APC NMC3 which makes it more secure and Ecostruxure IT ready. This offers advanced load monitoring combined with individual outlets metering for greater power management.



		EPDU2116MBO	EPDU2132MBO	EPDU2216MBO	EPDU2232MBO
Electrical	Nominal voltage	230 VAC single-phase		400 VAC three-phase	
	Input circuit	16 A	32 A	16 A	32 A
	Input frequency	50/60 Hz			
	Input connector	IEC309 16 A 2P+E	IEC309 32 A 2P+E	IEC309 16 A 3P+N+PE	IEC309 32 A 3P+N+PE
	Input cord length	3 m			
	Output voltage	200–240 VAC			
	Output receptacles	(20) C13 & (4) C19		(18) C13 & (6) C19	
	Circuit breakers	NA	(2) 16 A 1-pole hydraulic-magnetic circuit breakers	NA	(6) 16 A 1-pole hydraulic-magnetic circuit breakers
Physical	Mount style	Vertical			
	Width	55 mm			
	Height	1800 mm			
	Depth	56 mm			
	Housing material	Sheet metal			
	Toolless mounting	Yes			
	Color	Black			
User interface	Local user interface	LCD display; language: English			
	Local user control	3 buttons to scroll, select, and reset			
	Communication I/O	1 10/100 m base-T, up to 3 temperature/humidity sensor ports, 2 RS485 ports, 1 RJ45 port, 1 USB port			
	Remote management capabilities	http/https; SNMP V1, V2, V3			
Environmental	Operating temperature	-5° to 50°C			
	Operating humidity	5–95% RH, non-condensing			
	Elevation operating/storage	0–3000 m / 0–15000 m			
Regulatory	EMC	EN55035, EN55032, EN61000-3-3, EN61000-3-2, BSEN55035, BS EN55032, BS EN61000-3-3, BS EN61000-3-2			
	Safety	CE, TÜV (EN62368-1), RCM, UKCA, EAC			
	Environment	RoHS, REACH			
Package	Rack-mounting brackets	M5x10 mm self-tapping screw (4 pieces), L bracket (2 pieces), included screw			
	Safety sheet	Print version included			
	Installation instructions	Print version included			
	Package dimensions	2030x195x130 mm			
	Weight/shipping weight	6.37 kg/7.54 kg	7.12 kg/8.29 kg	6.82 kg/7.99 kg	8.38 kg/9.55 kg
Accessory	EPDU-TH3 (must order separately)				
Warranty	2 years				

Easy Metered by Outlet with Switching Rack PDU (APC NMC3 integrated)

Easy Metered by Outlet with Switching Rack PDU range is now upgraded with APC NMC3 which makes it more secure and Ecostruxure IT ready. This offers advanced load monitoring combined with remote on/off switching control & power metering on individual outlets.

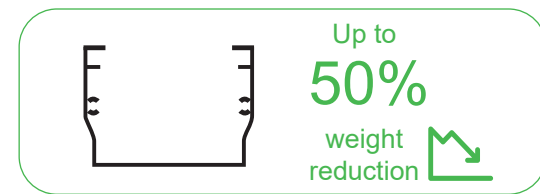


		EPDU2116SMBO	EPDU2132SMBO	EPDU2216SMBO	EPDU2232SMBO
Electrical	Nominal voltage	230 VAC single-phase		400 VAC three-phase	
	Input circuit	16 A	32 A	16 A	32 A
	Input frequency	50/60 Hz			
	Input connector	IEC309 16 A 2P+E	IEC309 32 A 2P+E	IEC309 16 A 3P+N+PE	IEC309 32 A 3P+N+PE
	Input cord length	3 m			
	Output voltage	200–240 VAC			
	Output receptacles	(20) C13 & (4) C19		(18) C13 & (6) C19	
	Circuit breakers	NA	(2) 16 A 1-pole hydraulic-magnetic circuit breakers	NA	(6) 16 A 1-pole hydraulic-magnetic circuit breakers
Physical	Mount style	Vertical			
	Width	55 mm			
	Height	1800 mm			
	Depth	56 mm			
	Housing material	Sheet metal			
	Toolless mounting	Yes			
	Color	Black			
User interface	Local user interface	LCD display; language: English			
	Local user control	3 buttons to scroll, select, and reset			
	Communication I/O	1 10/100 m base-T, up to 3 temperature/humidity sensor ports, 2 RS485 ports, 1 RJ45 port, 1 USB port			
	Remote management capabilities	http/https; SNMP V1, V2, V3			
Environmental	Operating temperature	-5° to 50°C			
	Operating humidity	5–95% RH, non-condensing			
	Elevation operating/storage	0–3000 m / 0–15000 m			
Regulatory	EMC	EN55035, EN55032, EN61000-3-3, EN61000-3-2, BSEN55035, BS EN55032, BS EN61000-3-3, BS EN61000-3-2			
	Safety	CE, TÜV (EN62368-1), RCM, UKCA, EAC			
	Environment	RoHS, REACH			
Package	Rack-mounting brackets	M5x10 mm self-tapping screw (4 pieces), L bracket (2 pieces), included screw			
	Safety sheet	Print version included			
	Installation instructions	Print version included			
	Package dimensions	2030x195x130 mm			
	Weight/shipping weight	6.67 kg/7.84 kg	7.42 kg/8.59 kg	7.12 kg/8.29 kg	8.68 kg/9.85 kg
Accessory	EPDU-TH3 (must order separately)				
Warranty	2 years				

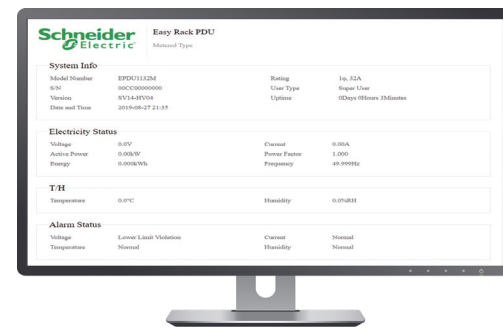
What's NEW

Ultra-light weight

Aluminum housing reduces weight by up to 50%



User-friendly web interface

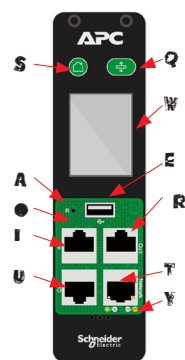


Newly designed display module

Smart, easy-to-use, multifunctional



NMC3 Rack PDU display:



Item	Function	Description
Q	Scroll button	Use the scroll button to move through displayed information
W	LCD display	Show information about the Rack PDU
E	USB port OK button	Connect a flash drive for firmware upgrades or to download data logs With a menu option highlighted, press the OK button to display Rack PDU information
R	Out port	RS485 port sharing connection
T	10/100/1000 base-T connector	Connect the Rack PDU to the network
Y	Speakers	Speakers for audio
U	Rj45 serial port	Port for connecting the Rack PDU to a terminal emulator program for local access to the command line interface
I	In port	RS485 port sharing connection
●	Temperature/humidity port	Temperature/humidity sensor connection port
A	Reset button	Reset the Rack PDU without affecting the status of individual outlets
S	Main menu button	Press to view the Rack PDU electrical input

Available accessories



EPDU-TH/EPDU-TH3 Easy Rack PDU Temperature/Humidity Sensor

This Easy Rack PDU environmental sensor with 2-meter cable and RJ45 connector monitors temperature and humidity in your data center or network closet.

Custom Easy Rack PDUs

Pre-configured or custom Easy Rack PDU designs help suit unique project and end-user requirements.

Make power distribution and customization easy.

The APC Easy Rack PDU is an easy-to-install, easy-to-use, easy-to-customize rack-mount PDU that helps manage power distribution to the equipment efficiently in the rack.

Customize Rack PDUs and pre-configure them to meet your needs. Some options are configured in as little as two weeks with a minimum order quantity of 50!

Length of input cord

Choose the power cord length that meets the needs of your data center.

Rack PDU colors

Select your preferred colors for the PDU housing and the area surrounding the outlets. Color coding has many benefits, such as reducing human error, the major culprit of downtime.

Outlet layout and quantity

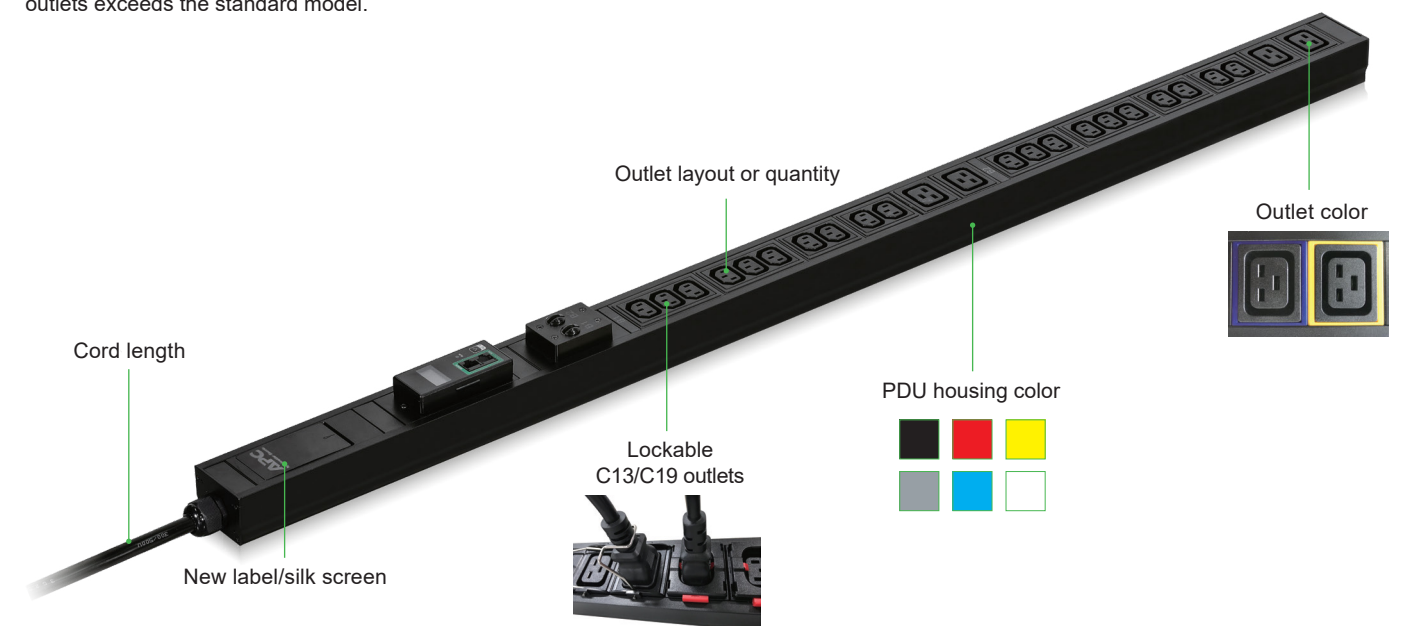
New flexible architecture allows you to adjust the layout and the number of outlets. Additional costs may apply if the total number of outlets exceeds the standard model.

Lockable outlets

Custom Easy Rack PDUs provide the ability to choose the lockable C13/C19 outlets. Lockable outlets can prevent the power line from loosening accidentally, which can lead to equipment power failure.

Specific labels/silk screen

Specify the labels/silk screen according to your needs.




Addressing unique needs with the service you expect from Schneider Electric

- Dedicated team to assist from design to delivery
- Competitive pricing model
- Optimized lead times for special orders
- Fast turnaround times for product modifications
- Global supply chain with Schneider Electric

For requests and more details email: easycustomracks@se.com

Life Is n

Schneider
 Electric

se.com

www.se.com

Schneider Electric

One Boston Place
Floor 27
Boston, MA 02108
United States
www.apc.com

April 2026

©2025 Schneider Electric. All Rights Reserved.
Schneider Electric | Life Is On and APC are trademarks and the property of Schneider Electric SE, its subsidiaries, and affiliated companies. •
998-21912450_GMA-US