

PLEASE NOTE

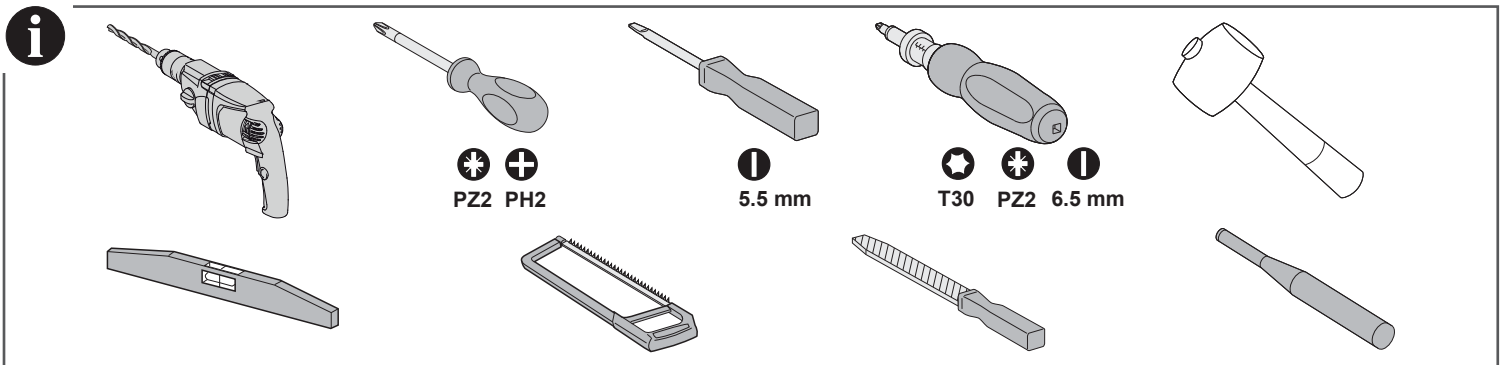
- This equipment must be installed and maintained by a qualified electrician in accordance with the appropriate statutory regulations and codes of practice, e.g. Electricity at Work Regulations, BS7671 IET Wiring regulations, etc.
- All applicable local, regional and national regulations must be complied with during the installation, use, maintenance and replacement of this device.
- This device should not be installed if, when unpacking it, you observe that it is damaged.
- Schneider Electric cannot be held responsible in the event of noncompliance with the instructions in this document and in the documents to which it refers.
- The service instruction must be observed throughout the life time of this device.

⚠ ⚠ DANGER

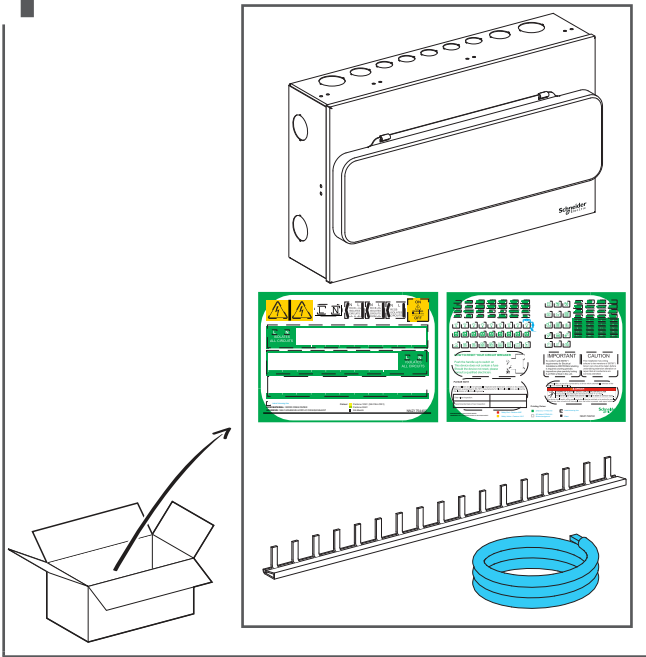
HAZARD OF ELECTRIC SHOCK, EXPLOSION OR ARC FLASH

- Turn off all power supplying this device before working on it.
- Use a voltage tester with a suitable rated voltage in order to check that all active conductors aren't energized.
- Carefully inspect the work area to check that no tools or objects could have been left inside the equipment.

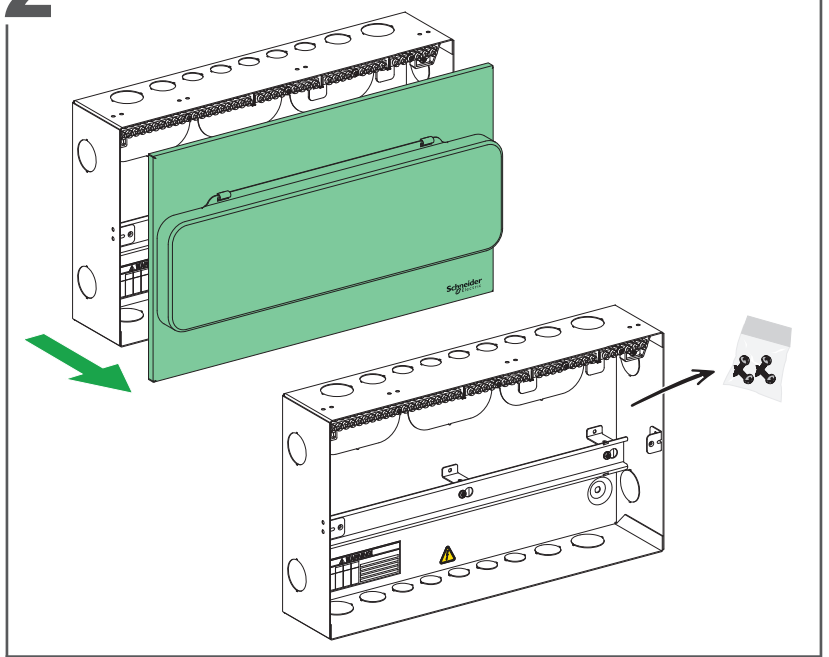
Failure to follow these instructions will result in death or serious injury.



1 Unboxing



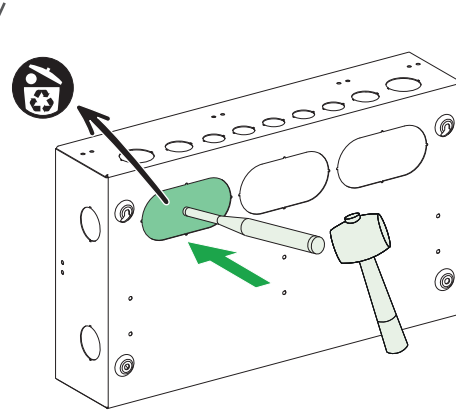
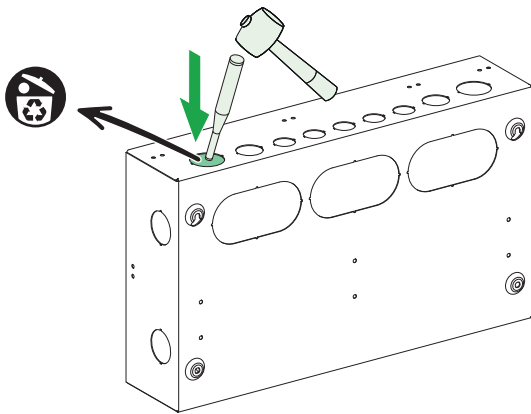
2 Removal of Front Cover



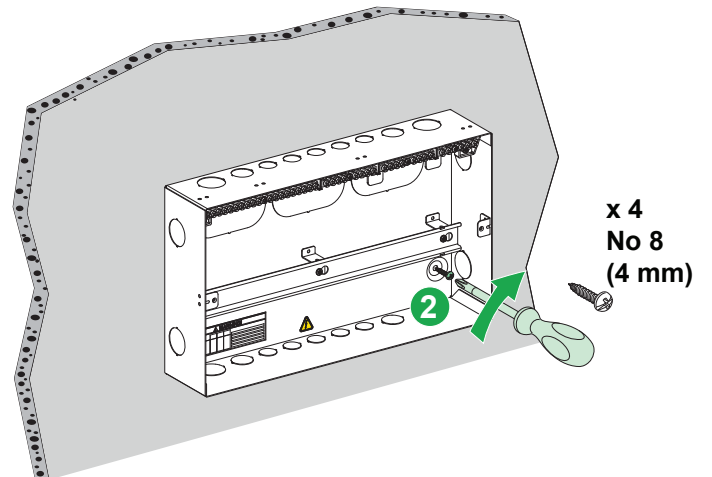
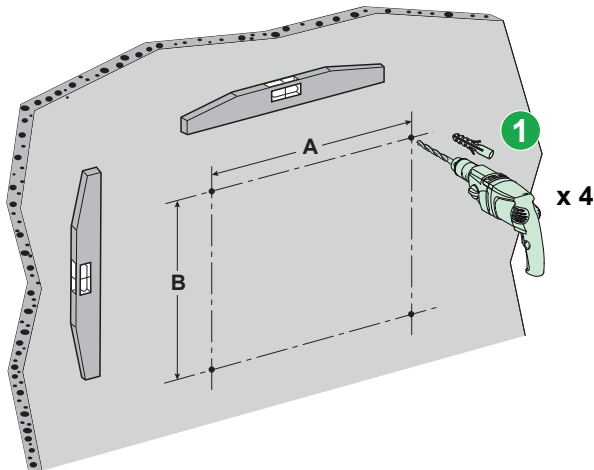
3 Cable Entry Knockouts

PLEASE NOTE

- Remove the minimum number of knockouts required for the incoming and outgoing cables to pass through easily.
- IP rating shall be maintained in accordance with BS7671. Suitable cable protection shall be applied with appropriate conduit.

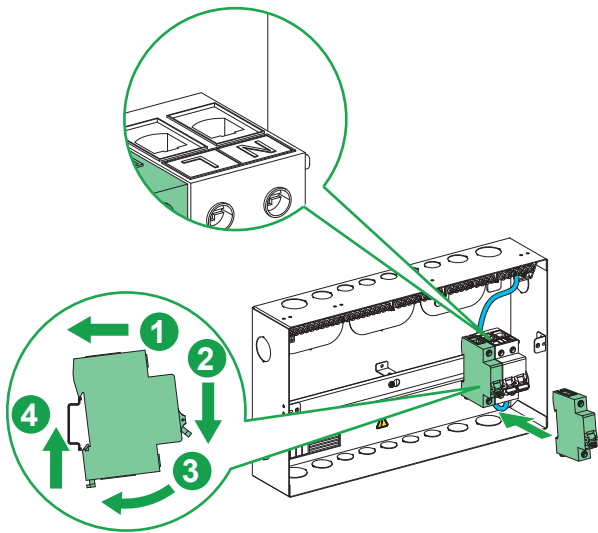


4 Mounting of Consumer Unit

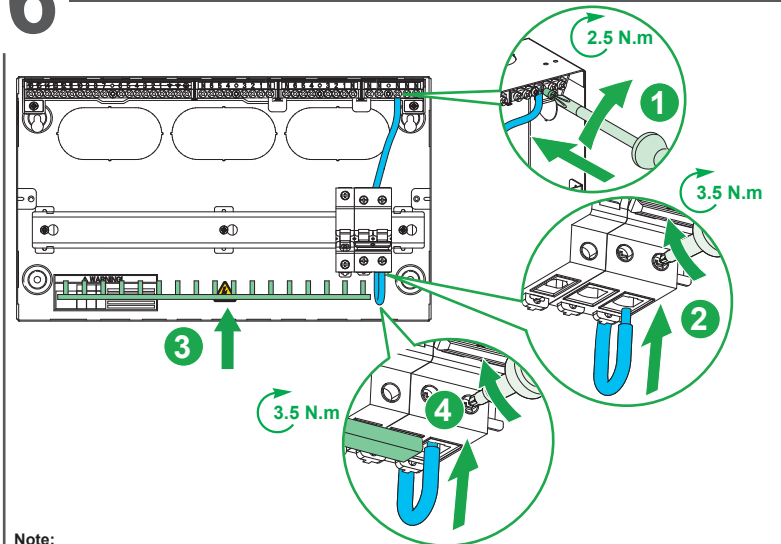


	A (mm)	B (mm)
EZ9E10MCCU	261	156
EZ9E12MCCU	296	156
EZ9E16MCCU	356	156

5 Installation of Devices



6 Neutral Cable and Comb Busbar Connections



Note:

- Easy9 Isolator Switch Disconnecter phase (L) and neutral (N) terminal not labeled on the product and it can be interchanged.
- For incomer position on the right: it is recommended to connect neutral cable on the right terminal of the isolator Switch Disconnecter for reduced cabling.
- For incomer position on the left: it is recommended to connect neutral cable on the left terminal of the isolator Switch Disconnecter for reduced cabling.

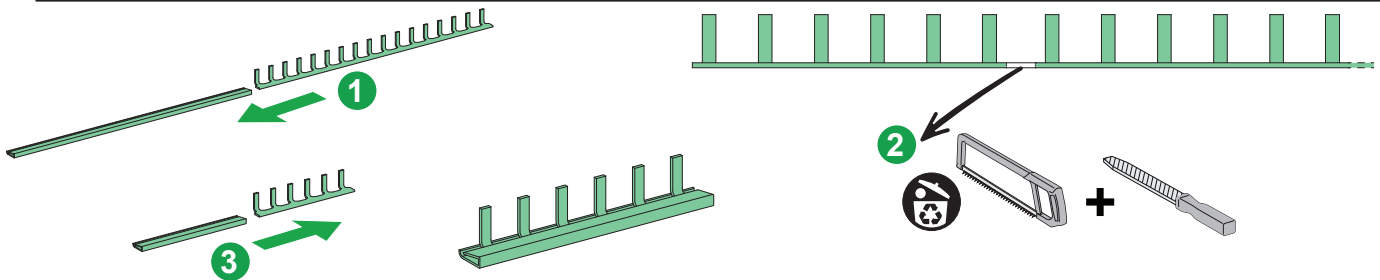


CAUTION

RISK OF CUTTING

Use a file to round off the cut ends of the comb busbar.

Failure to follow these instructions can result in injury or equipment damage.

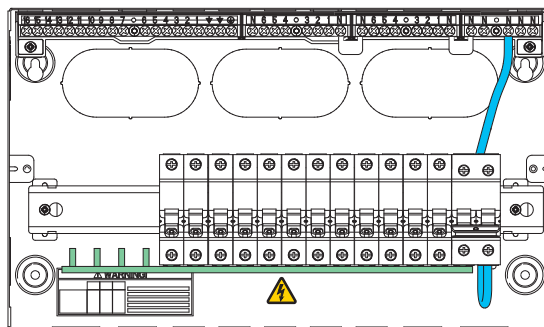


DANGER

HAZARD OF ELECTRIC SHOCK, EXPLOSION, OR ARC FLASH

- Check that the busbar is fully located in MCB's and incomer.
- Tighten all connections to recommended torque settings.

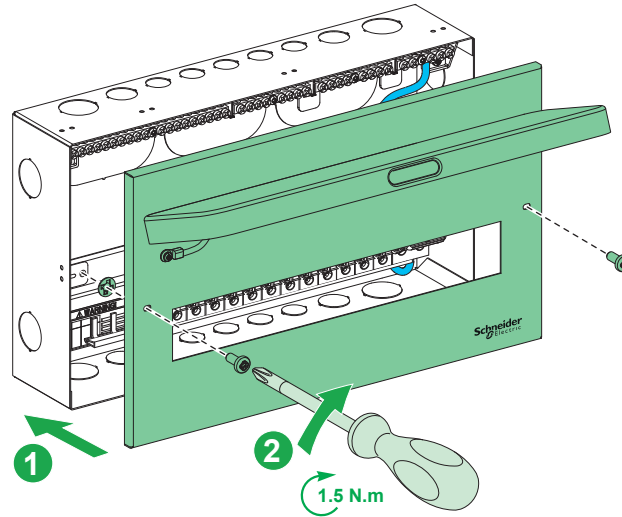
Failure to follow these instructions will result in death or serious injury.



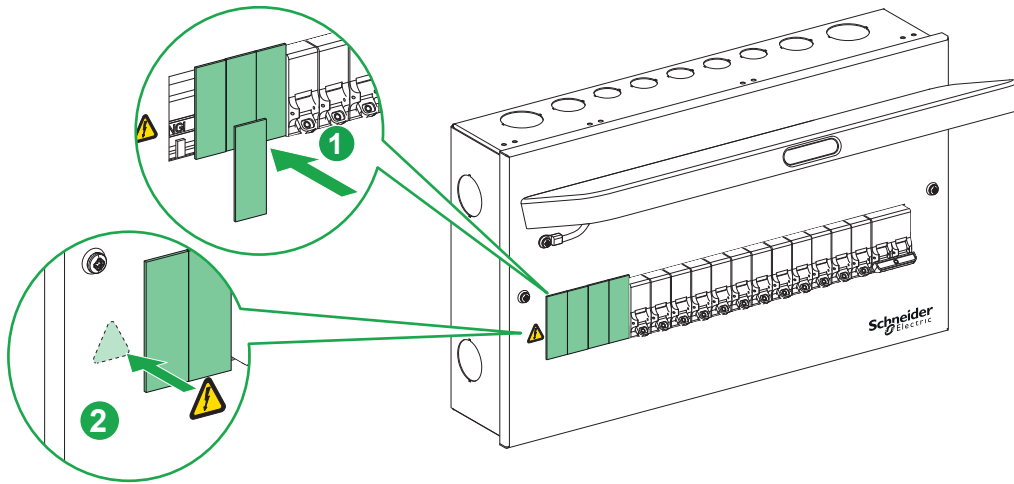
Incoming switch	20 mm	≤ 50 mm ²	≤ 35 mm ²	3.5 N.m	6.5 mm	PZ2
RCCB	16 mm	≤ 35 mm ²	≤ 25 mm ²	3.5 N.m		
MCB 3 - 25 A	16 mm	≤ 25 mm ²	≤ 16 mm ²	2.0 N.m		
MCB 32 - 50 A	16 mm	≤ 35 mm ²	≤ 25 mm ²	3.5 N.m		
RCBO	Lin ≤ 14 mm / L&Nout ≤ 16 mm	Lin ≤ 25 mm ² /L&Nout ≤ 16 mm ²	Lin ≤ 16 mm ² /L&Nout ≤ 10 mm ²	2.0 N.m	5.5 mm	PZ2
Terminal bars	10 mm	≤ 25 mm ²	≤ 16 mm ²	2.5 N.m	6.5 mm	PZ2
SPD	16 mm	≤ 35 mm	≤ 25 mm ²	2.5 N.m	6.5 mm	PZ2

7 Finishing Installation

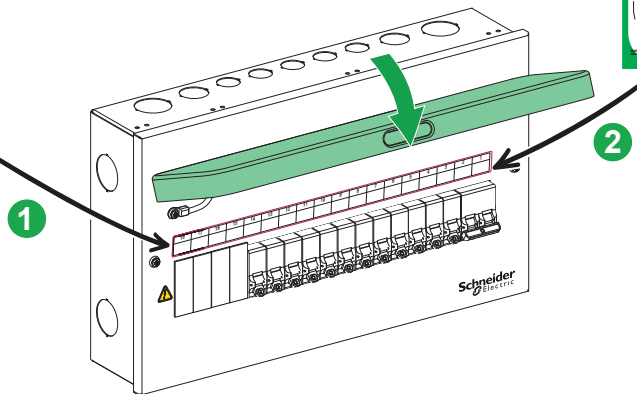
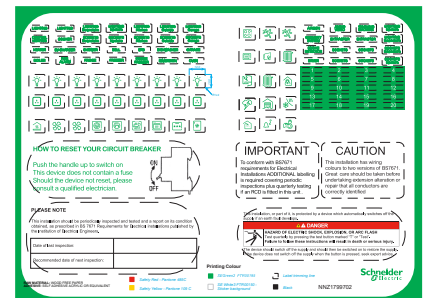
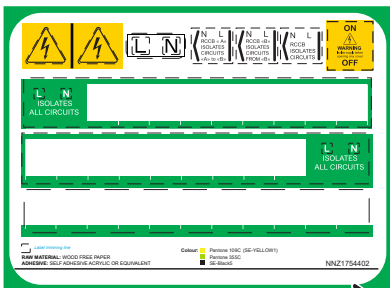
7.1 Assembly of Front Cover



7.2 Assembly of Pole Filler



7.3 Labelling



Schneider Electric Limited
 Stafford Park 5
 Telford TF3 3BL
 United Kingdom
 www.se.com/uk