

# SIMPLICITY

Scalable, Future-proof  
Technology for Small & Medium Utilities

EcoStruxure™ Grid Operation



# Challenges

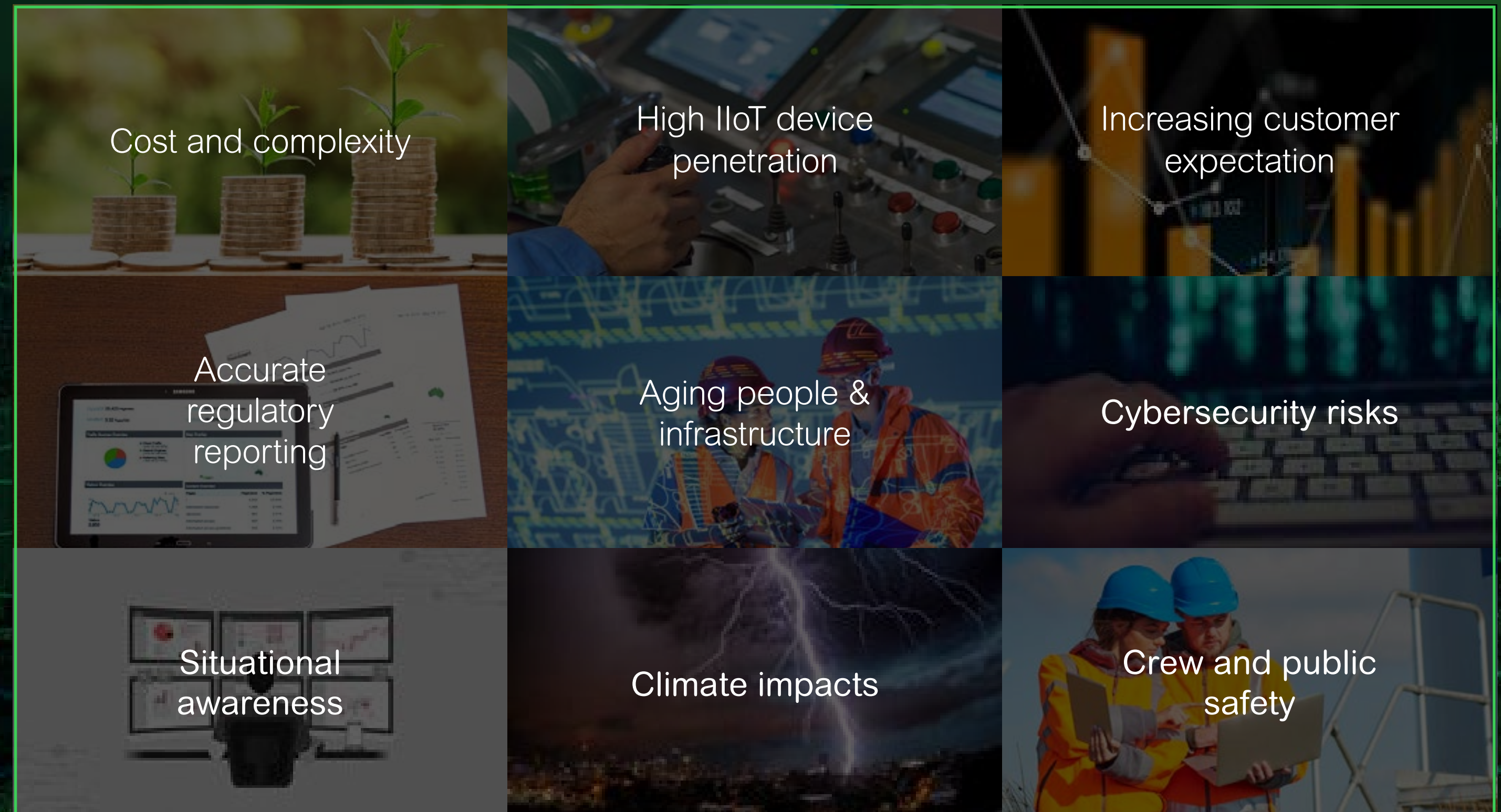
## Digitalization for sustainable future

Climate change has already produced noticeable effects on the world. Due to these effects, utilities cope with lower reliability, higher expenses, and more power outages.

Many utilities are still unprepared for these changes since the current infrastructure is built for historical weather conditions and is more vulnerable to future extremes.

End customers' expectations are increasing, emphasizing these vulnerabilities, thus pressuring utilities to cope with low situational awareness & controllability and provide adequate response to potential disturbances.

Crew and public safety must be impeccable as utilities strive to improve their key performance indexes and respond to a global rise of cybersecurity breaches.





# Grid Operation

Use case driven, modular and flexible deployment

Scalable, future-proof and cutting-edge technology for small and small-to-medium utilities who seek ways to **maximize operational efficiency** and **improve reliability & resilience** while **reducing investments**.

Supports utilities in their digitalization journey and paves the way for future adoption of **best-in-class ADMS** in a stepwise approach.

Improves operational efficiency and grid reliability & resilience

Improves SAIDI, SAIFI  
Enhances safety and efficiency  
Reduces utility's OPEX

Cutting-edge technology for small and medium utilities

Next-gen SCADA  
Field-proven Outage Management  
Flexible deployment

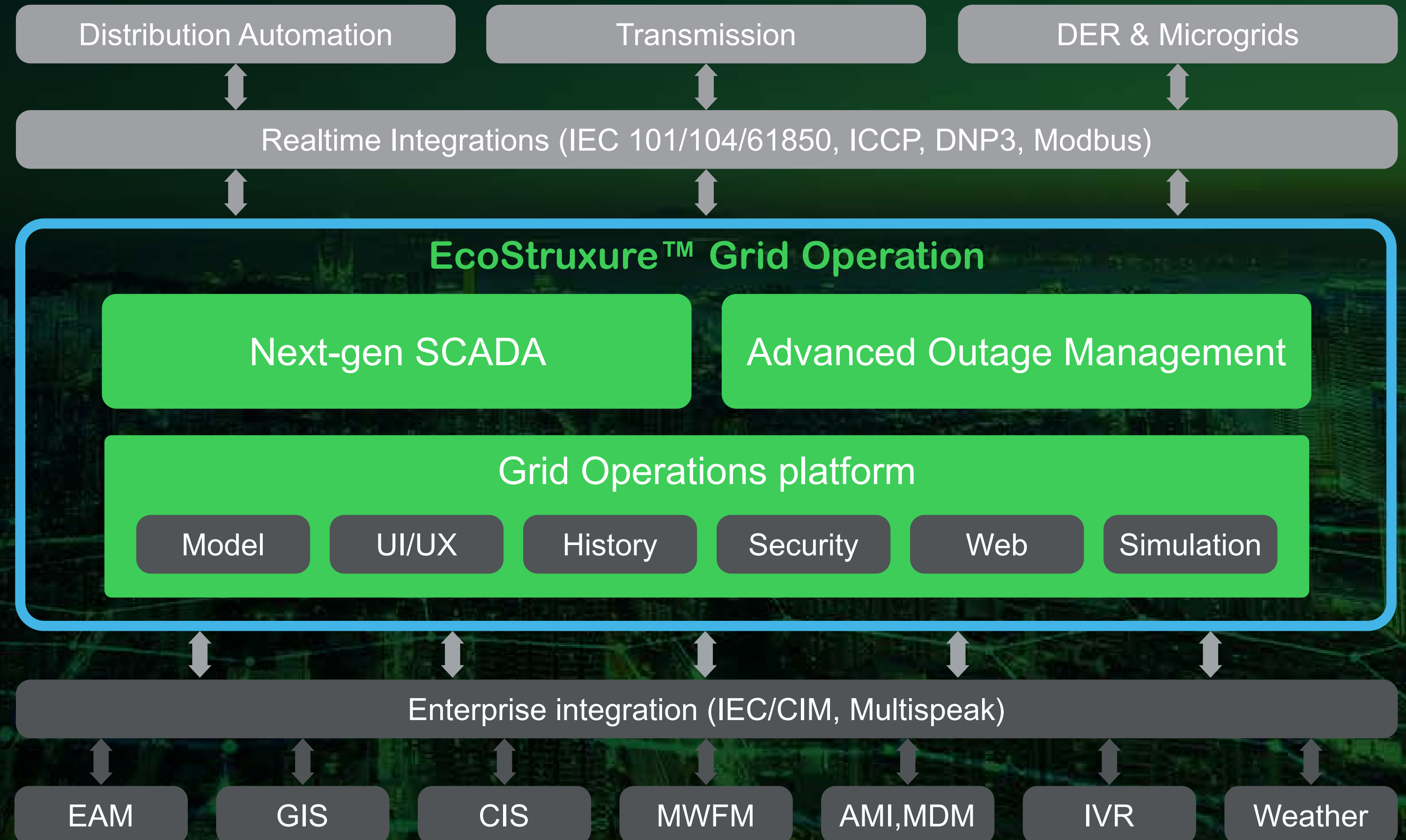
Scalable and future-proof solution

Stepwise approach to ADMS  
Native integration with SE offers  
Partner-ready offer

# At a glance

## Solution overview

- Intuitive, consistent user interface
- Adaptable switching management
- Simplified SCADA commissioning
- Embedded protocol analyzer
- Real-time field client
- Comprehensive outage management
- Flexible dashboards
- Secure and reliable data exchange

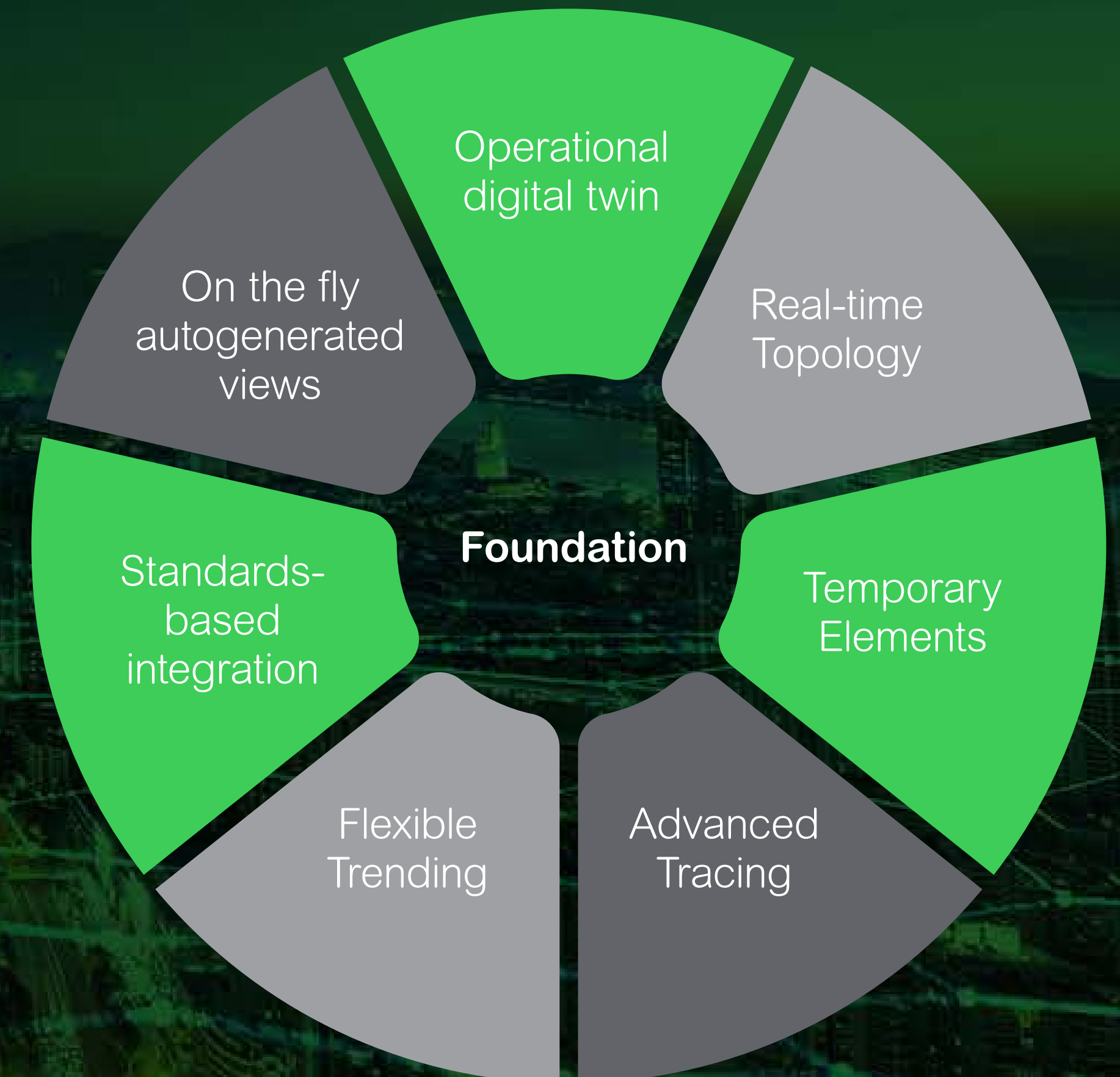




# Laying the foundation

## A closer look at common Grid Operations platform

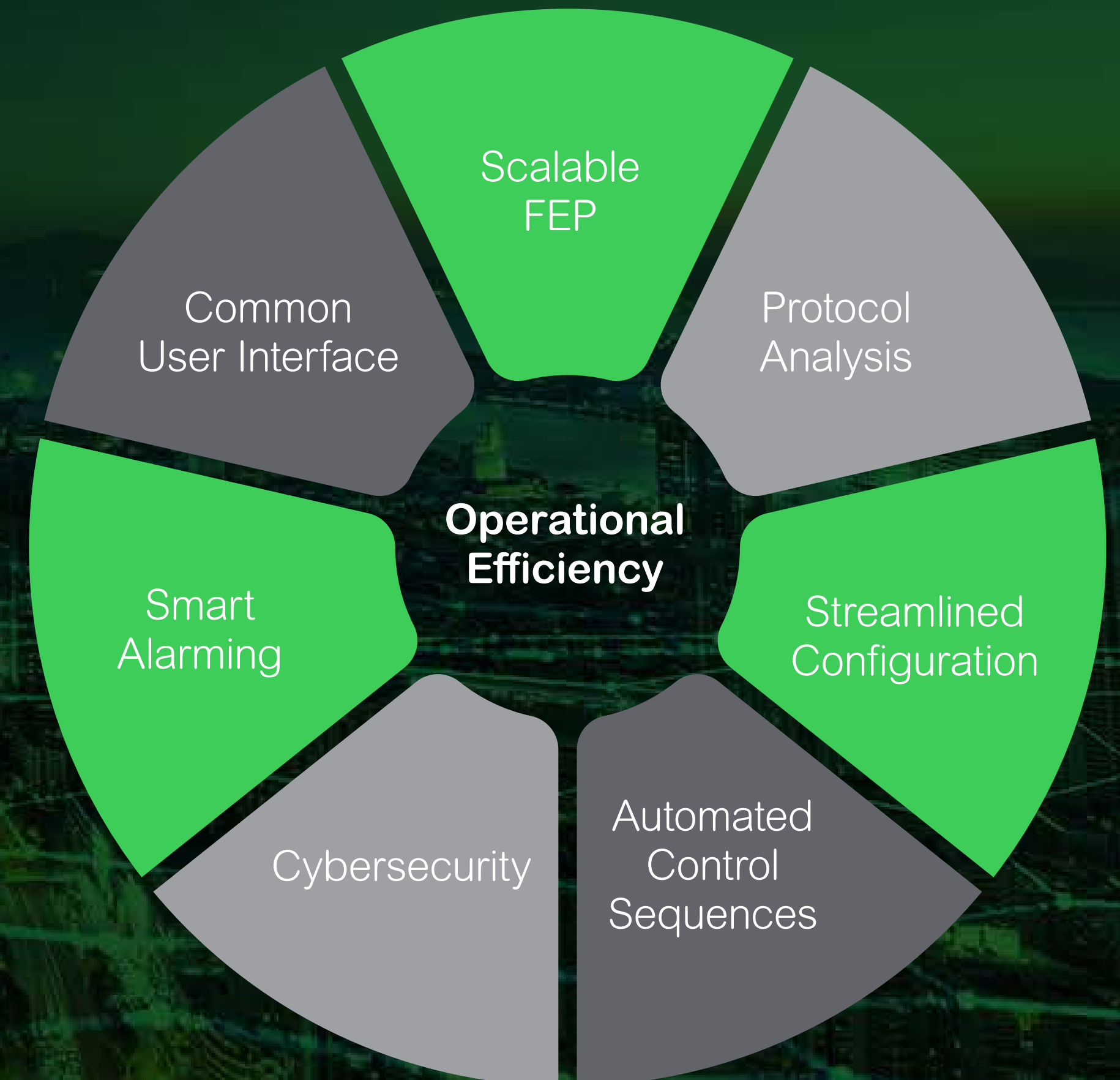
- Complete and more accurate picture of a distribution grid operational digital twin
- Improved grid observability through real-time topology
- Convenient temporary elements applicable on different types of network views
- Advanced Tracing for pinpointing user-defined objects
- Flexible trending with at-a-glance overview of key stress points
- Standards-based integration for tight integration of all systems and stakeholders
- On-the-fly autogenerated view



# Maximizing operational efficiency

## A closer look at best-in-class SCADA

- Common user interface for all applications
- Unified network model management and maintenance
- Highly performant SCADA for grids of the future
- Scalable Front-End Processing (FEP)
- Rich and extensible communication protocols portfolio
- Powerful communication troubleshooting tools
- Built-in cybersecurity – IEC 62351 standard series
- Topology aware smart alarming





# Improving reliability & resilience

## A closer look at comprehensive outage management

- Flexible outage management process
- Improved visibility of customer complaints with trouble event management
- Safe and efficient end-to-end process with integrated switching
- Streamlined damage reporting
- Reliability reports at a fingertip
- Increased safety with field client and as operated state of the grid
- Boosted efficiency and awareness with proactive outage notifications





# Tailor Your Solution

## Offer and available addons

| Next-Gen SCADA   | Advanced OMS   | SCADA & OMS  |
|--|--|--|
| <ul style="list-style-type: none"> <li>✓ <b>Grid Operations platform</b></li> <li>✓ Next-Gen SCADA</li> <li>✓ Single Pane of Glass HMI</li> <li>✓ Integrated Switching Management</li> <li>✓ Templated Model Management</li> <li>✓ SCADA integration (ICCP, Multispeak)</li> <li>✓ DNP3</li> <li>✓ IEC 101</li> <li>✓ IEC 104</li> <li>Load Shedding</li> <li>Emergency Voltage Reduction</li> <li>SCADA based FLISR</li> <li>Closed loop FLISR</li> <li>Advanced Switching Management</li> <li>Real-time Field Client</li> <li>Web-based HMI for corporate users</li> <li>Forecast                             <ul style="list-style-type: none"> <li>Near Term (NT)</li> <li>Short Term (ST)</li> <li>Medium Term (MT)</li> </ul> </li> <li>Essential Load Flow</li> <li>Low Voltage Network Model</li> <li>ArcFM Data Exporter</li> <li>Native OSIsoft PI Historian Integration</li> <li>IEC 61850</li> <li>Server DNP3 Server</li> <li>IEC 101 Server</li> <li>Conitel MD3</li> <li>MODBUS</li> <li>Series 5</li> <li>VANCOMM</li> <li>Switching Management Integration</li> </ul> | <ul style="list-style-type: none"> <li>✓ <b>Grid Operations platform</b></li> <li>✓ Advanced Outage Management</li> <li>✓ Single Pane of Glass HMI</li> <li>✓ Integrated Switching Management</li> <li>✓ Templated Model Management</li> <li>✓ SCADA integration (ICCP, Multispeak)</li> <li>✓ Real-time Field Client</li> <li>✓ Web-based Call Taking Application</li> <li>✓ Web-based HMI for corporate users</li> <li>✓ Native IEC/CIM and Multispeak integrations with corporate systems                             <ul style="list-style-type: none"> <li>✓ Advanced Metering Infrastructure (AMI)</li> <li>✓ Interactive Voice Response (IVR)</li> <li>✓ Customer Relationship Management (CRM)</li> </ul> </li> <li>✓ Outage publishing Integration (ONT)</li> <li>✓ ArcFM Data Exporter</li> <li>Advanced Switching Management</li> <li>Proactive Notifications</li> <li>Essential Load Flow</li> <li>Low Voltage Network Model</li> <li>Native IEC/CIM and Multispeak integrations                             <ul style="list-style-type: none"> <li>Automatic Vehicle Locator (AVL)</li> <li>Workforce Management systems (WFM)</li> </ul> </li> <li>Outage Portals</li> </ul> | <ul style="list-style-type: none"> <li>✓ <b>Grid Operations platform</b></li> <li>✓ Next-Gen SCADA</li> <li>✓ Advanced Outage Management</li> <li>✓ Single Pane of Glass HMI</li> <li>✓ Integrated Switching Management</li> <li>✓ Templated Model Management</li> <li>✓ SCADA integration (ICCP, Multispeak)</li> <li>✓ DNP3</li> <li>✓ IEC 101</li> <li>✓ IEC 104</li> <li>✓ Real-time Field Client</li> <li>✓ Web-based Call Taking Application</li> <li>✓ Web-based HMI for corporate users</li> <li>✓ Native IEC/CIM and Multispeak integrations with corporate systems (AMI, IVR, CRM)</li> <li>✓ Outage publishing Integration (ONT)</li> <li>✓ ArcFM Data Exporter</li> <li>Load Shedding</li> <li>Emergency Voltage Reduction</li> <li>SCADA based FLISR</li> <li>Closed loop FLISR</li> <li>Advanced Switching Management</li> <li>Forecast (NT, ST, MT)</li> <li>Essential Load Flow</li> <li>Low Voltage Network Model</li> <li>Native OSIsoft PI Historian Integration</li> <li>IEC 61850</li> <li>Server DNP3 Server</li> <li>IEC 101 Server</li> <li>Conitel, MD3, MODBUS, Series 5, VANCOMM</li> <li>Proactive Notifications</li> <li>Native IEC/CIM and Multispeak integrations with AVL, WFM and Outage Portals</li> </ul> |

✓ Included in the offer



# Solution that Goes Beyond

## Key benefits



### Lower TCO

Reduces total cost of ownership by utilizing single operational digital twin



### Single Pane of Glass HMI

Minimized context switch & reduced number of user actions with intuitive and consistent UI



### Switching Management

Fully digitalized and secure, reduces control room workload and enhances safety & efficiency of field crews



### SCADA Commissioning

Significant savings in SCADA telemetry commissioning



### SCADA Performance

300k changes/sec processed



### Protocol Analyzer

Saves time needed for analysis of SCADA communication issues up to 70%



### Best-in-class Outage Management

Globally field proven, fast restoration, intelligent prediction, comprehensive reporting



### Real-Time Field Client

Single application for managing all types of work, improving crew safety, efficiency & real-time awareness



### Proactive Outage Notifications

Keep information-hungry stakeholders well informed all the time, while saving up to 1M€ yearly



Life Is On



For more information about EcoStruxure ADMS  
visit [schneider-electric.com/ecostruxure-adms](https://schneider-electric.com/ecostruxure-adms) today!

[schneider-electric.com/ecostruxure-adms](https://schneider-electric.com/ecostruxure-adms)



**Schneider Electric**

35 rue Joseph Monier  
92500 Rueil-Malmaison, France  
Tel : +33 (0)1 41 29 70 00