

#### NOTES:

1. INSTALLATION SHALL COMPLY WITH ALL APPLICABLE NATIONAL, STATE AND LOCAL CODES.
2. REFER TO PRODUCT DOCUMENTATION FOR ADDITIONAL DETAILS PRIOR TO INSTALLATION AND SITE PREPARATION WORK.
3. ALL DIMENSIONS ARE IN MILLIMETERS.
- △4. CLEARANCE DIMENSIONS ARE RECOMMENDED FOR AIRFLOW AND SERVICE ACCESS ONLY. CONSULT WITH LOCAL SAFETY CODES AND STANDARDS FOR ADDITIONAL REQUIREMENTS IN YOUR AREA.
5. CABLE ENTRY IS FROM BOTTOM/BOTTOM-REAR/BOTTOM-SIDES OF THE UNIT.
6. OPERATING TEMPERATURE: 0°C TO 40°C [32°F TO 104°F].
7. PROTECTION CLASS: IP31.
8. COLOR: RAL 7035.
- △9. FOR HEAT DISSIPATION, WEIGHT DATA AND CENTER OF GRAVITY DETAILS REFER TO SHEET-2.

THIS DRAWING AND SPECIFICATIONS HEREIN ARE THE PROPERTY OF SCHNEIDER ELECTRIC AND SHALL NOT BE COPIED, REPRODUCED OR USED IN WHOLE OR IN PART, AS THE BASIS FOR THE MANUFACTURE OR SALE OF ITEMS WITHOUT WRITTEN PERMISSION FROM SCHNEIDER ELECTRIC. THIS DRAWING IS BASED UPON LATEST AVAILABLE INFORMATION AND IS SUBJECT TO CHANGE WITHOUT NOTICE.

**Schneider Electric**

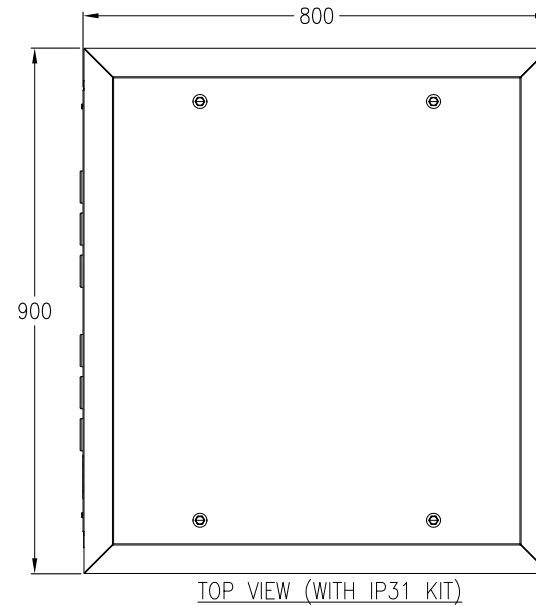
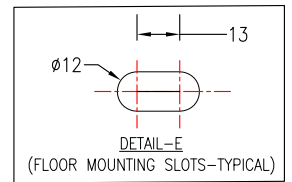
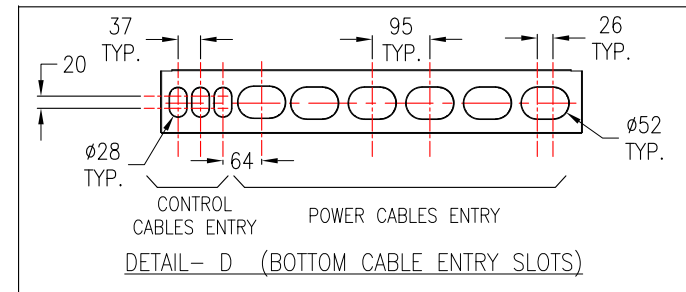
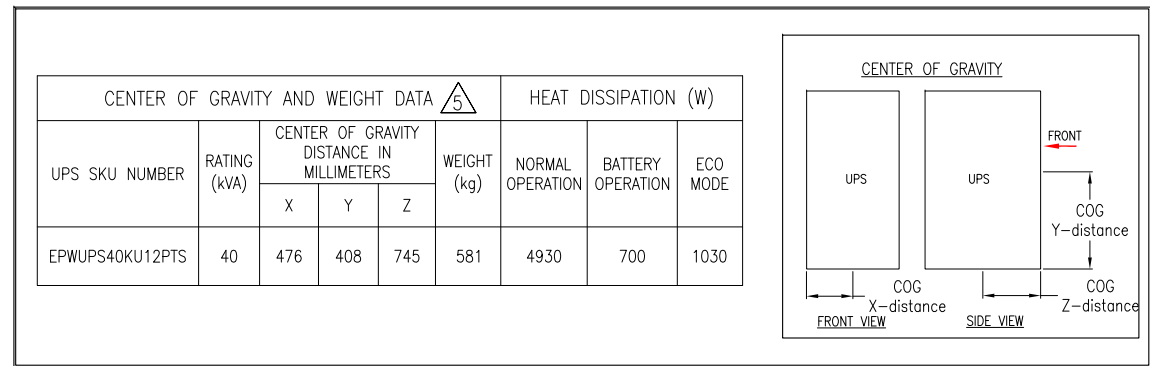
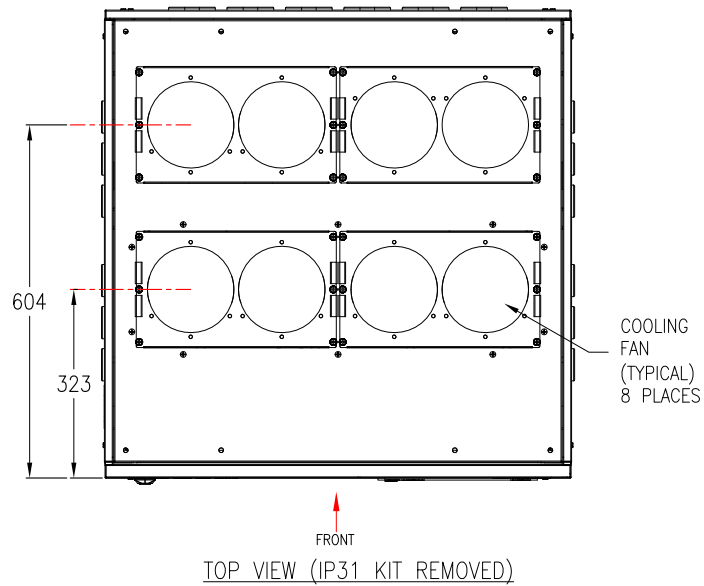
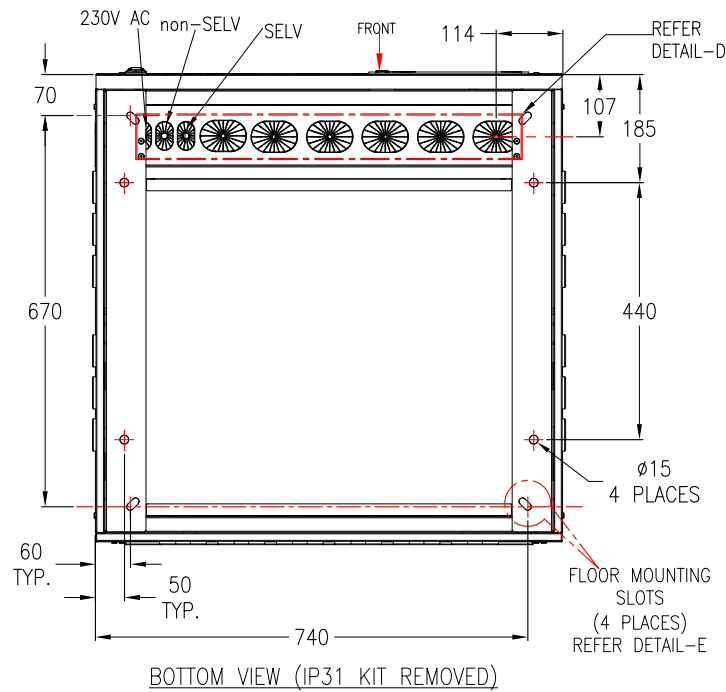
**TITLE:** Galaxy PW 2nd Gen  
UPS 40kVA 12 PULSE w INPUT\_XFMR  
Input: 380/400/415V, 3PH, 50Hz, SINGLE/DUAL MAINS  
Output: 220/230/240V, 1PH, 50Hz  
GENERAL ARRANGEMENT

**PROJECT:** SUBMITTAL DRAWINGS **SHEET 1 OF 6**

**DWG NO:** EPWUPS40KU12PTS

|                  |           |           |
|------------------|-----------|-----------|
| <b>DRAWN:</b>    | BALA      | 08-NOV-20 |
| <b>ENGINEER:</b> | XIANG REN | 08-NOV-20 |
| <b>APPROVED:</b> | XIANG REN | 08-NOV-20 |

**REV.** 1  
**FIRST ANGLE PROJECTION**



#### NOTES:

1. INSTALLATION SHALL COMPLY WITH ALL APPLICABLE NATIONAL, STATE AND LOCAL CODES.
  2. REFER TO PRODUCT DOCUMENTATION FOR ADDITIONAL DETAILS PRIOR TO INSTALLATION AND SITE PREPARATION WORK.
  3. ALL DIMENSIONS ARE IN MILLIMETERS.
  4. SOME STRUCTURAL DETAILS HAVE BEEN OMITTED FOR THE PURPOSE OF CLARITY.
- $\triangle 5$ . THIS INFORMATION PROVIDES APPROXIMATE CENTER OF GRAVITY CALCULATION.

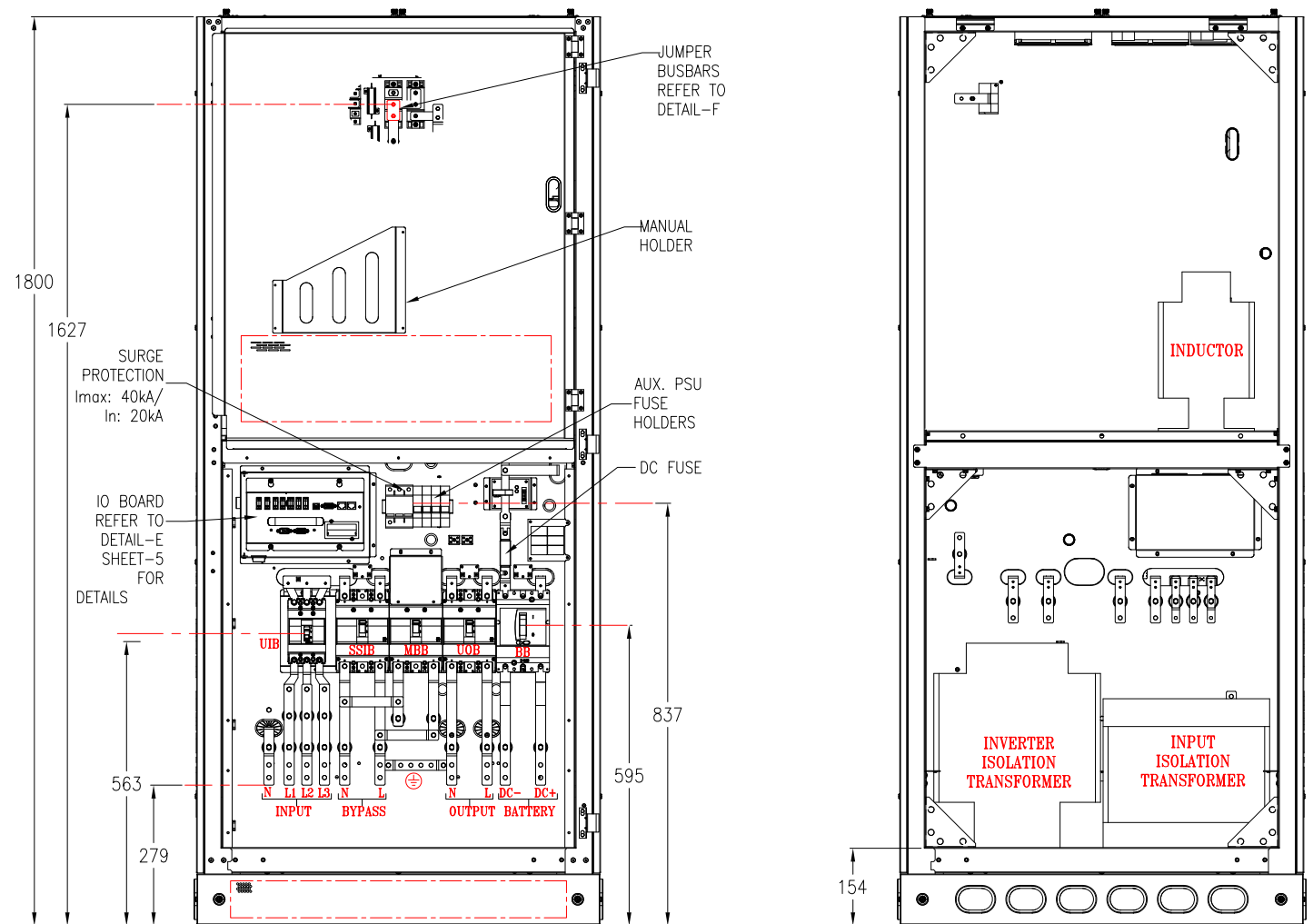
THIS DRAWING AND SPECIFICATIONS HEREIN ARE THE PROPERTY OF SCHNEIDER ELECTRIC AND SHALL NOT BE COPIED, REPRODUCED OR USED IN WHOLE OR IN PART, AS THE BASIS FOR THE MANUFACTURE OR SALE OF ITEMS WITHOUT WRITTEN PERMISSION FROM SCHNEIDER ELECTRIC. THIS DRAWING IS BASED UPON LATEST AVAILABLE INFORMATION AND IS SUBJECT TO CHANGE WITHOUT NOTICE.

**Schneider Electric**

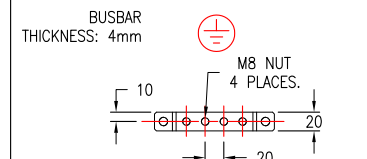
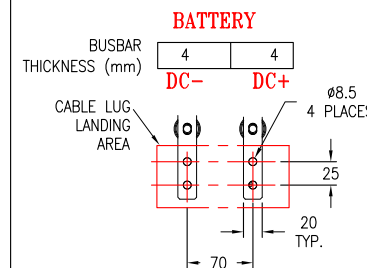
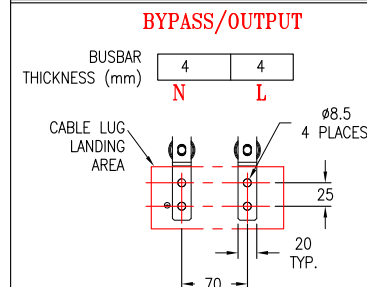
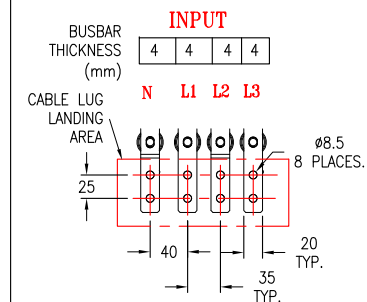
TITLE: Galaxy PW 2nd Gen  
UPS 40kVA 12 PULSE w INPUT\_XFMR  
Input: 380/400/415V, 3PH, 50Hz, SINGLE/DUAL MAINS  
Output: 220/230/240V, 1PH, 50Hz  
TOP AND BOTTOM VIEWS

PROJECT: SUBMITTAL DRAWINGS SHEET 2 OF 6

| DWG NO: EPWUPS40KU12PTS |           | REV. 0                 |
|-------------------------|-----------|------------------------|
| DRAWN: BALA             | 13-SEP-20 | FIRST ANGLE PROJECTION |
| ENGINEER: XIANG REN     | 18-SEP-20 |                        |
| APPROVED: XIANG REN     | 18-SEP-20 |                        |

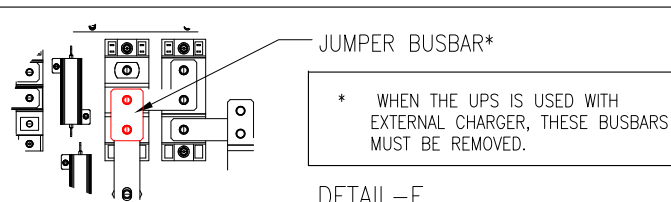


## INTERFACE BUSBARS



INTERNAL FRONT VIEW

INTERNAL REAR VIEW



DETAIL-F

## TRANSFORMER DETAILS (DRY TYPE)

| UPS SKU NUMBER  | INPUT ISOLATION TRANSFORMER DETAILS               | OUTPUT ISOLATION TRANSFORMER DETAILS         |
|-----------------|---|--|
| EPWUPS40KU12PTS | 51 kVA, 50Hz, Vin: 380 VAC, Vout: 245/245, Dd0y11 | 40kVA, 50Hz, Vin: 96 VAC, Vout: 220 VAC, iio |

## NOTES:

1. INSTALLATION SHALL COMPLY WITH ALL APPLICABLE NATIONAL, STATE AND LOCAL CODES.
2. REFER TO PRODUCT DOCUMENTATION FOR ADDITIONAL DETAILS PRIOR TO INSTALLATION AND SITE PREPARATION WORK.
3. ALL DIMENSIONS ARE IN MILLIMETERS.
4. SOME STRUCTURAL DETAILS HAVE BEEN OMITTED FOR THE PURPOSE OF CLARITY.

THIS DRAWING AND SPECIFICATIONS HEREIN ARE THE PROPERTY OF SCHNEIDER ELECTRIC AND SHALL NOT BE COPIED, REPRODUCED OR USED IN WHOLE OR IN PART, AS THE BASIS FOR THE MANUFACTURE OR SALE OF ITEMS WITHOUT WRITTEN PERMISSION FROM SCHNEIDER ELECTRIC. THIS DRAWING IS BASED UPON LATEST AVAILABLE INFORMATION AND IS SUBJECT TO CHANGE WITHOUT NOTICE.

**Schneider Electric**

TITLE: Galaxy PW 2nd Gen  
UPS 40kVA 12 PULSE w INPUT\_XFMR  
Input: 380/400/415V, 3PH, 50Hz, SINGLE/DUAL MAINS  
Output: 220/230/240V, 1PH, 50Hz  
INTERNAL VIEWS AND BUSBAR DETAILS

PROJECT: SUBMITTAL DRAWINGS SHEET 3 OF 6

DWG NO: EPWUPS40KU12PTS

DRAWN: BALA 13-SEP-20

ENGINEER: XIANG REN 18-SEP-20

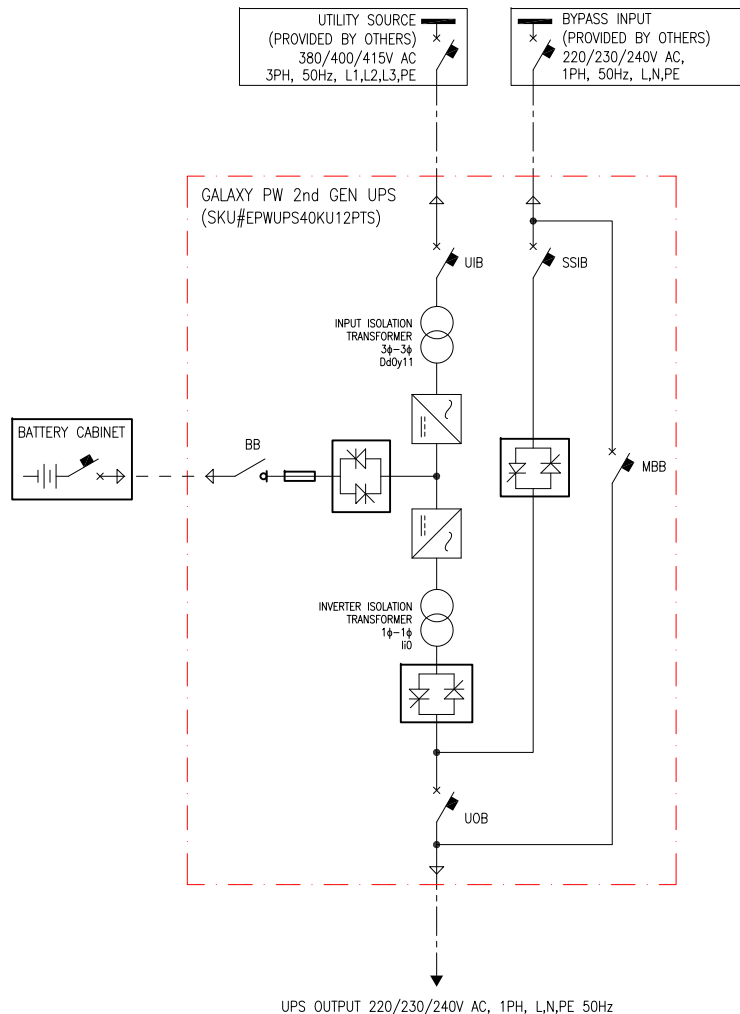
APPROVED: XIANG REN 18-SEP-20

REV. 0

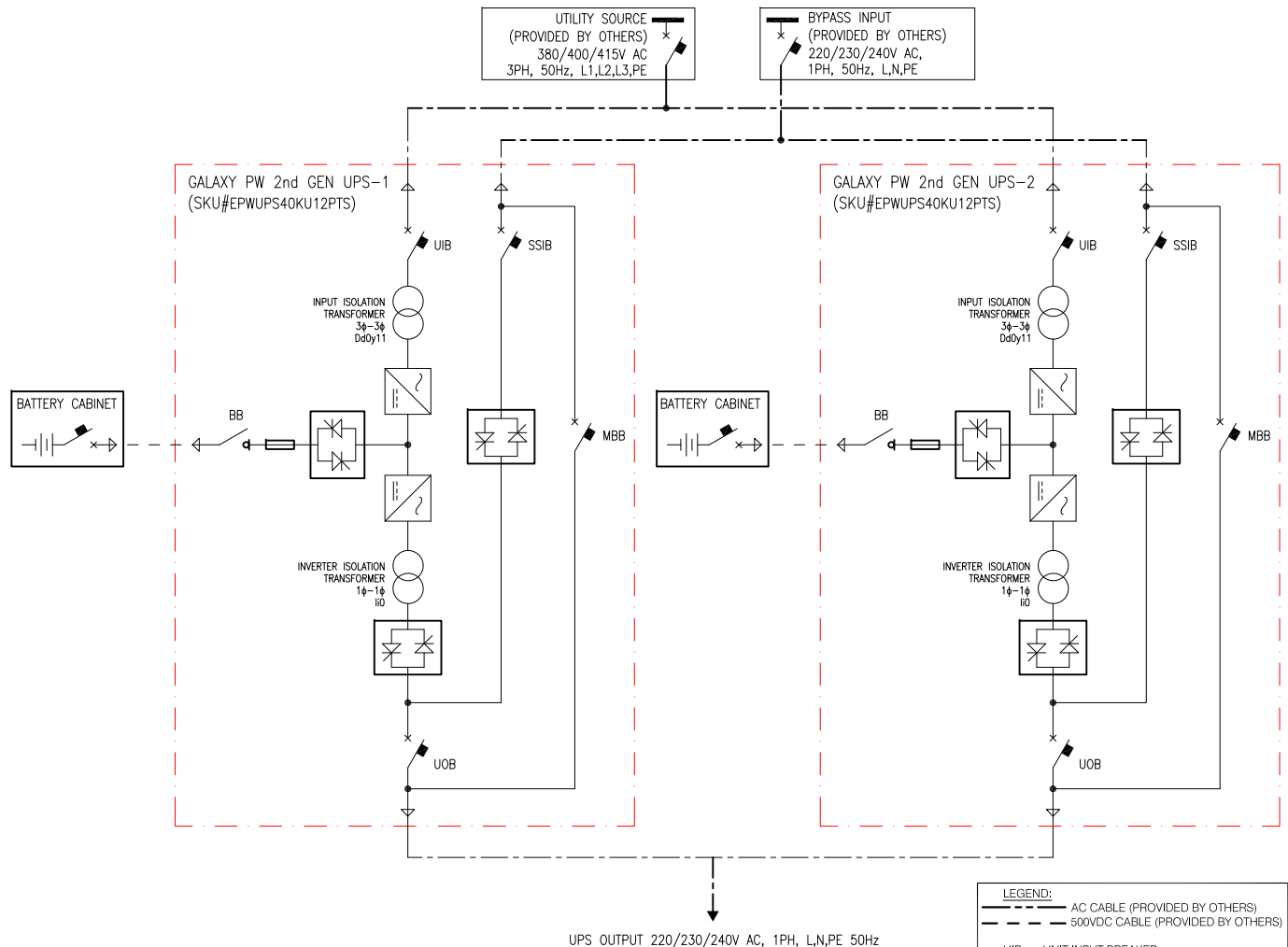
FIRST ANGLE

PROJECTION

## 1 MODULE UPS SOLUTION



## 1+1 REDUNDANT PARALLEL UPS SOLUTION



| LEGEND: |                                   |
|---------|-----------------------------------|
| ---     | AC CABLE (PROVIDED BY OTHERS)     |
| ---     | 500VDC CABLE (PROVIDED BY OTHERS) |
| UIB     | - UNIT INPUT BREAKER              |
| SSIB    | -STATIC SWITCH INPUT BREAKER      |
| BB      | -BATTERY BREAKER                  |
| MBB     | -MAINTENANCE BYPASS BREAKER       |
| UOB     | -UNIT OUTPUT BREAKER              |

| GALAXY PW 2ND GENERATION 40 kVA 1 MODULE UPS SITE PLANNING DATA  |   |  |  |  |  |   |
|--|---|--|--|--|--|---|
| MAINS INPUT (SINGLE MAINS): 380/400/415V AC, 50Hz 3PH L1,L2,L3,PE    BYPASS INPUT: 220/230/240V AC, 50Hz, 1PH, L1,N,PE<br>OUTPUT: 220/230/240V AC, 50Hz, 1PH L1,N,PE |   |  |  |  |  |   |
| NOMINAL MAINS INPUT CURRENT (A)<br>@380/400/415V AC  | MAXIMUM MAINS INPUT CURRENT (A)<br>@380/400/415V AC | NOMINAL BYPASS INPUT CURRENT (A)<br>@220/230/240V AC | UPS/ SYSTEM OUTPUT CURRENT<br>@220/230/240V AC | BATTERY CURRENT @ FULL LOAD AND NOMINAL Vbat (V) | BATTERY CURRENT @ FULL LOAD AND MINIMUM Vbat (V) | RECOMMENDED OVER CURRENT PROTECTION DEVICE MODEL(PART NUMBER)/In/Ir/I <sub>m</sub> SETTING (MAKE:-SCHNEIDER ELECTRIC) |
| 75/71/69   | 94/89/86  | 182/174/167  | 182/174/167                                    | 185  | 230  | NSX100F TM100D 3P3D (LV429630)/<br>100/100/800(FIXED)   |
|  |   |  |  |  |  | NSX250F TM200D 3P3D (LV431631)/<br>200/200/5-10xIn  |

| GALAXY PW 2ND GENERATION 40 kVA RECOMMENDED CABLE SIZES** |          |                       |                   |                     |       |
|---|----------|-----------------------|-------------------|---------------------|-------|
| AC CABLES (IN SQMM)                                       |          |                       |                   | DC CABLES (IN SQMM) |       |
| INPUT PHASES  | INPUT PE | BYPASS/ OUTPUT PHASES | BYPASS/ OUTPUT PE | DC+/- DC-           | DC PE |
| 16  | 16       | 35                    | 16                | 50                  | 25    |

- \*\* CABLE SIZES ARE BASED ON TABLE B.52.12 OF IEC 60364-5-52 WITH THE FOLLOWING ASSERTIONS:-**
- 90° C CONDUCTORS, AN AMBIENT TEMPERATURE OF 30° C.
  - USE OF COPPER CONDUCTORS, INSTALLATION METHOD F.
  - PE CABLE SIZE BASED ON TABLE 54.2 OF IEC 60364-4-54.
  - IF THE AMBIENT TEMPERATURE IS GREATER THAN 30° C, LARGER CONDUCTORS ARE TO BE SELECTED IN ACCORDANCE WITH THE CORRECTION FACTORS OF THE IEC.

- NOTES:**
- INSTALLATION SHALL COMPLY WITH ALL APPLICABLE NATIONAL, STATE AND LOCAL CODES.
  - REFER TO PRODUCT INSTALLATION DOCUMENTATION FOR SITE PREPARATIONS.
  - DRAWING DEPICTS POWER SYSTEM CONNECTIONS AND IS NOT REPRESENTATIVE OF PHYSICAL LAYOUT. REFER TO MECHANICAL DRAWINGS FOR EQUIPMENT LAYOUT.
  - FINAL SELECTIONS ARE RESPONSIBILITY OF ENGINEER OF RECORDS BASED ON INSTALLED CONDITIONS AND SCC/SELECTIVE CO-ORDINATION/ARC-FLASH ANALYSIS.
  - MAXIMUM 4 UPSs (4 CAPACITY OR 3(N+1)) CAN BE PARALLELED.

THIS DRAWING AND SPECIFICATIONS HEREIN ARE THE PROPERTY OF SCHNEIDER ELECTRIC AND SHALL NOT BE COPIED, REPRODUCED OR USED IN WHOLE OR IN PART, AS THE BASIS FOR THE MANUFACTURE OR SALE OF ITEMS WITHOUT WRITTEN PERMISSION FROM SCHNEIDER ELECTRIC. THIS DRAWING IS BASED UPON LATEST AVAILABLE INFORMATION AND IS SUBJECT TO CHANGE WITHOUT NOTICE.

**Schneider Electric**

TITLE: Galaxy PW 2nd Gen  
UPS 40kVA 12 PULSE w INPUT\_XFMR  
Input: 380/400/415V, 3PH, 50Hz, DUAL MAINS  
Output: 220/230/240V, 1PH, 50Hz  
SYSTEM ONE LINE DIAGRAM

DWG NO: EPWUPS40KU12PTS

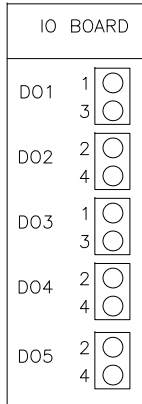
REV. 2

PROJECT: SUBMITTAL DRAWINGS SHEET 4 OF 6

DRAWN: BALA 25-MAR-21  
ENGINEER: XIANG REN 9-APR-21  
APPROVED: XIANG REN 9-APR-21

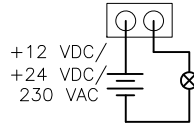
ANGLE OF PROJECTION  
N.A

# CONFIGURABLE OUTPUT DRY CONTACTS

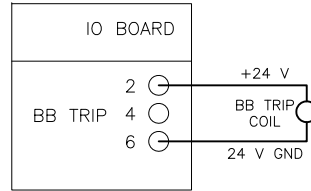


D01, D02, D03, D04, D05  
CONFIGURABLE FUNCTIONS  
(DEFAULT 0, 0, 0, 0, 0)

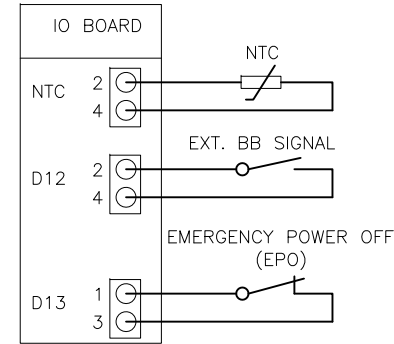
0: OFF  
1: COMMON ALARM  
2: NORMAL OPERATION  
3: BATTERY OPERATION  
4: STATIC BYPASS  
5: OUTPUT OVERLOAD  
6: FAN INOPERABLE  
7: BATTERY FAULT  
8: BATTERY DISCONNECTED  
9: BATTERY VOLTAGE LOW  
10: INPUT OUT OF TOLERANCE  
11: BYPASS OUT OF TOLERANCE  
12: EPO ACTIVATED  
13: MAINTENANCE MODE  
14: BACKFEED ON INPUT  
15: BACKFEED ON BYPASS



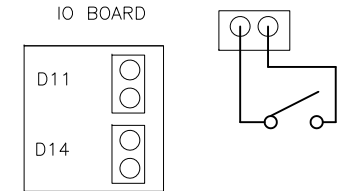
# FIXED OUTPUT DRY CONTACTS



# FIXED INPUT DRY CONTACTS



# CONFIGURABLE INPUT DRY CONTACTS



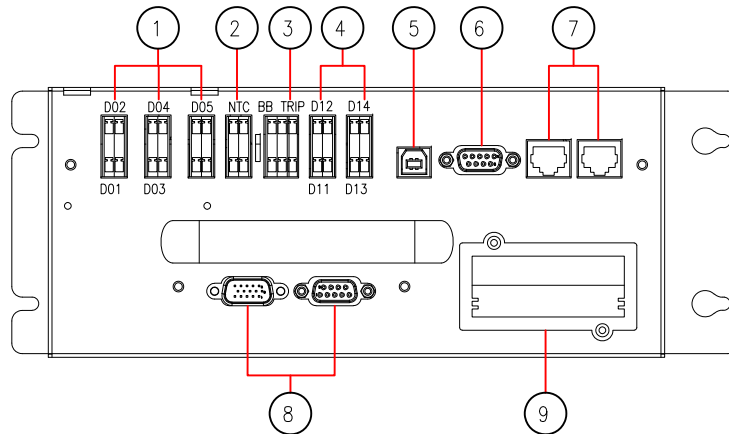
D11, D14 (DEFAULT 0, 0)  
CONFIGURABLE FUNCTIONS

0: OFF  
1: UPS ON  
2: UPS OFF  
3: BATTERY FAULT  
4: GENSET ENABLE  
5: CUSTOM ALARM 1  
6: CUSTOM ALARM 2  
7: DISABLE ECO  
8: FORCE INVERTER OFF

# SPECIFICATIONS OF INPUT AND OUTPUT RELAYS

| TYPE OF CONTACT | PARAMETER    | TYPICAL | MAXIMUM |
|-----------------|--------------|---------|---------|
| INPUT           | VOLTAGE (V)  | NA      | 5       |
|                 | CURRENT (mA) | NA      | 15      |
| OUTPUT          | VOLTAGE (V)  | 24 VDC  | 230 VAC |
|                 | CURRENT (A)  | NA      | 3       |

△ A. MAXIMUM 5A/250 VAX, 3 A/30 VDC MUST BE CONNECTED TO THE OUTPUT CONTACTS. THE RECOMMENDED CABLE IS 0.5–1 Sqmm. THE OUTPUT DRY CONTACTS PROVIDE TWO PASSIVE STATUSES: SHORT AND OPEN. THE OUTPUT CONTACTS MUST BE CONNECTED TO AN EXTERNAL POWER SUPPLY TO TRIGGER THE FUNCTION.



DETAIL-E (ROTATED/ENLARGED) (IO BOARD)

1. OUTPUT DRY CONTACTS (230 VAC)
2. EXTERNAL BATTERY TEMPERATURE INPUT CONTACT (NON-SELV)
3. BB TRIP OUTPUT CONTACT (SELV)
4. INPUT DRY CONTACTS (SELV)
5. USB PORT (SELV)
6. RS232 PORTS (SELV)
7. RS485 PORTS (SELV)
8. PARALLEL PORTS (SELV)
9. INTELLIGENT SLOT FOR SNMP CARD (SELV)

# COMMON NOTES:

1. INSTALLATION SHALL COMPLY WITH ALL APPLICABLE NATIONAL, STATE AND LOCAL CODES.
2. REFER TO PRODUCT INSTALLATION DOCUMENTATION FOR SITE PREPARATIONS.
3. RUN THE SELV CABLES SEPARATELY FROM THE non-SELV CABLES.

THIS DRAWING AND SPECIFICATIONS HEREIN ARE THE PROPERTY OF SCHNEIDER ELECTRIC AND SHALL NOT BE COPIED, REPRODUCED OR USED IN WHOLE OR IN PART, AS THE BASIS FOR THE MANUFACTURE OR SALE OF ITEMS WITHOUT WRITTEN PERMISSION FROM SCHNEIDER ELECTRIC. THIS DRAWING IS BASED UPON LATEST AVAILABLE INFORMATION AND IS SUBJECT TO CHANGE WITHOUT NOTICE.

**Schneider Electric**

TITLE: Galaxy PW 2nd Gen  
UPS 40kVA 12 PULSE w INPUT\_XFMR  
Input: 380/400/415V, 3PH, 50Hz, DUAL MAINS  
Output: 220/230/240V, 1PH, 50Hz  
UPS INTERFACE DETAILS-1

DWG NO: EPWUPS40KU12PTS

REV. 1

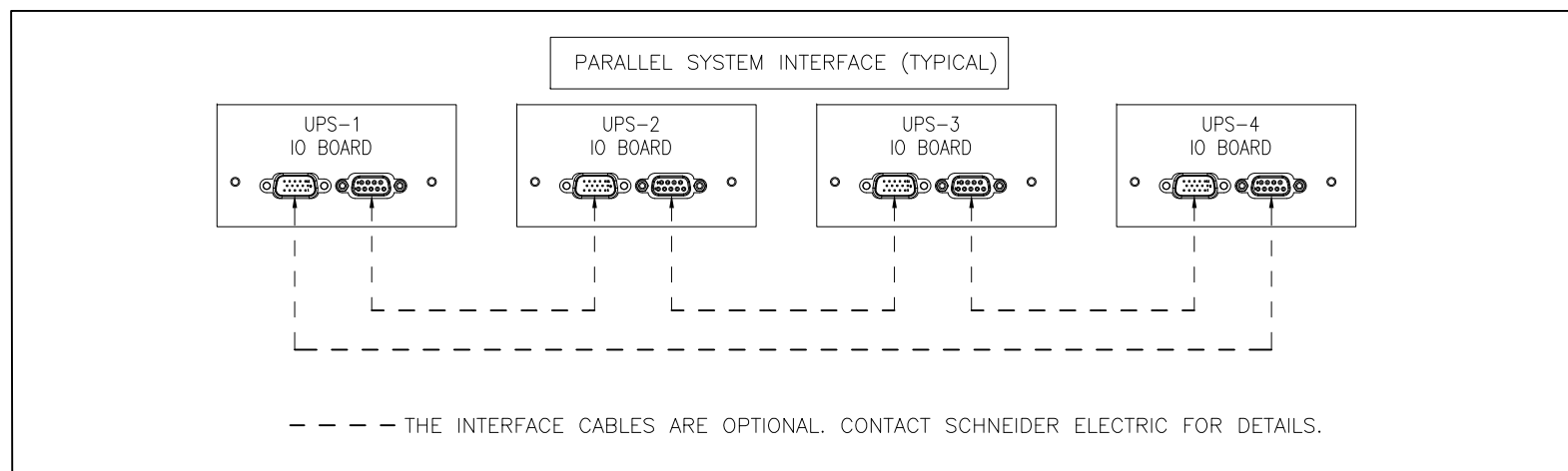
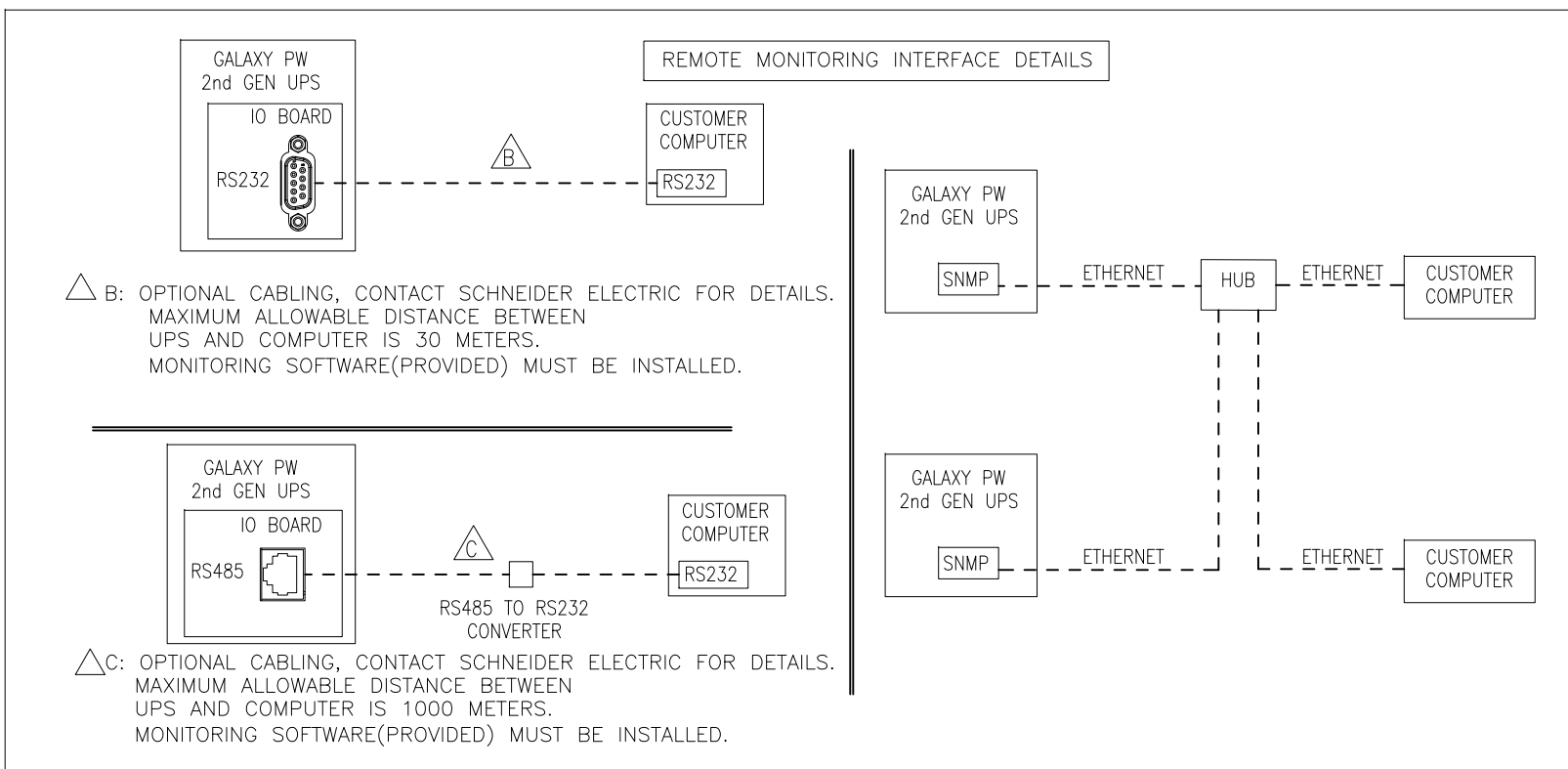
DRAWN: BALA 25-MAR-21

ENGINEER: XIANG REN 9-APR-21

APPROVED: XIANG REN 9-APR-21

PROJECT: SUBMITTAL DRAWINGS SHEET 5 OF 6

ANGLE OF PROJECTION  
N.A.



**COMMON NOTES:**

1. INSTALLATION SHALL COMPLY WITH ALL APPLICABLE NATIONAL, STATE AND LOCAL CODES.
2. REFER TO PRODUCT INSTALLATION DOCUMENTATION FOR SITE PREPARATIONS.
3. RUN THE SELV CABLES SEPARATELY FROM THE non-SELV CABLES.

THIS DRAWING AND SPECIFICATIONS HEREIN ARE THE PROPERTY OF SCHNEIDER ELECTRIC AND SHALL NOT BE COPIED, REPRODUCED OR USED IN WHOLE OR IN PART, AS THE BASIS FOR THE MANUFACTURE OR SALE OF ITEMS WITHOUT WRITTEN PERMISSION FROM SCHNEIDER ELECTRIC. THIS DRAWING IS BASED UPON LATEST AVAILABLE INFORMATION AND IS SUBJECT TO CHANGE WITHOUT NOTICE.

**Schneider Electric**

TITLE: Galaxy PW 2nd Gen  
UPS 40kVA 12 PULSE w INPUT\_XFMR  
Input: 380/400/415V, 3PH, 50Hz, DUAL MAINS  
Output: 220/230/240V, 1PH, 50Hz  
UPS INTERFACE DETAILS-2

DWG NO: EPWUPS40KU12PTS

REV. 0

DRAWN: BALA 13-SEP-20

ENGINEER: XIANG REN 18-SEP-20

APPROVED: XIANG REN 18-SEP-20

PROJECT: SUBMITTAL DRAWINGS SHEET 6 OF 6

ANGLE OF PROJECTION  
N.A.