

#### NOTES:

1. INSTALLATION SHALL COMPLY WITH ALL APPLICABLE NATIONAL, STATE AND LOCAL CODES.
2. REFER TO PRODUCT DOCUMENTATION FOR ADDITIONAL DETAILS PRIOR TO INSTALLATION AND SITE PREPARATION WORK.
3. ALL DIMENSIONS ARE IN MILLIMETERS.
- △4. CLEARANCE DIMENSIONS ARE RECOMMENDED FOR AIRFLOW AND SERVICE ACCESS ONLY. CONSULT WITH LOCAL SAFETY CODES AND STANDARDS FOR ADDITIONAL REQUIREMENTS IN YOUR AREA.
5. CABLE ENTRY IS FROM BOTTOM/BOTTOM-REAR/BOTTOM-SIDES OF THE UNIT.
6. OPERATING TEMPERATURE: 0°C TO 40°C [32°F TO 104°F].
7. PROTECTION CLASS: IP31.
8. COLOR: RAL 7035.
- △9. FOR HEAT DISSIPATION, WEIGHT DATA AND CENTER OF GRAVITY DETAILS REFER TO SHEET-2.

THIS DRAWING AND SPECIFICATIONS HEREIN ARE THE PROPERTY OF SCHNEIDER ELECTRIC AND SHALL NOT BE COPIED, REPRODUCED OR USED IN WHOLE OR IN PART, AS THE BASIS FOR THE MANUFACTURE OR SALE OF ITEMS WITHOUT WRITTEN PERMISSION FROM SCHNEIDER ELECTRIC. THIS DRAWING IS BASED UPON LATEST AVAILABLE INFORMATION AND IS SUBJECT TO CHANGE WITHOUT NOTICE.

**Schneider Electric**

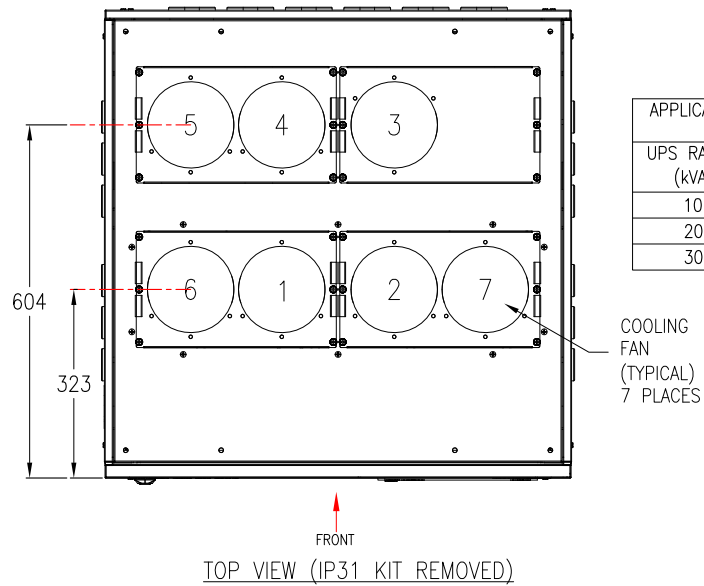
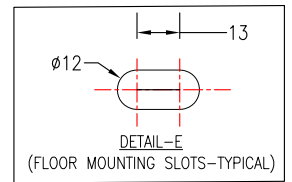
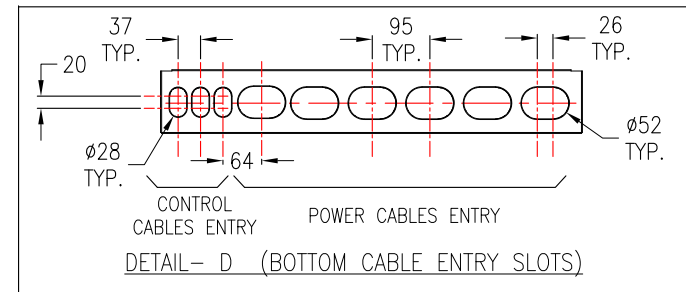
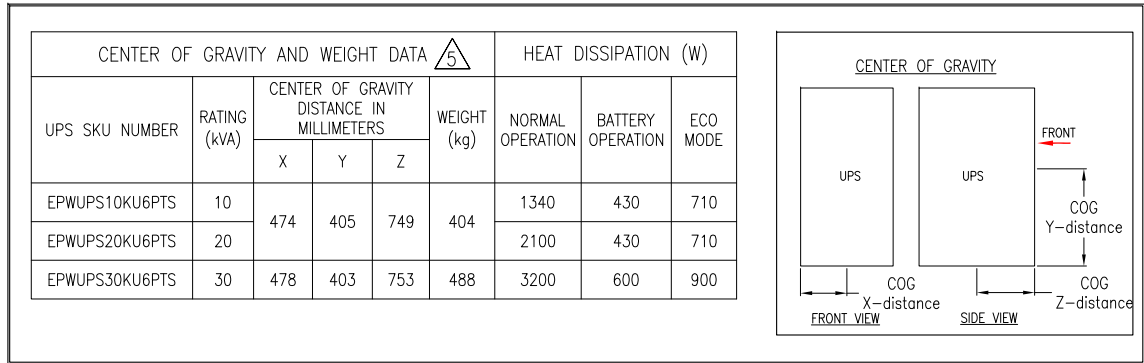
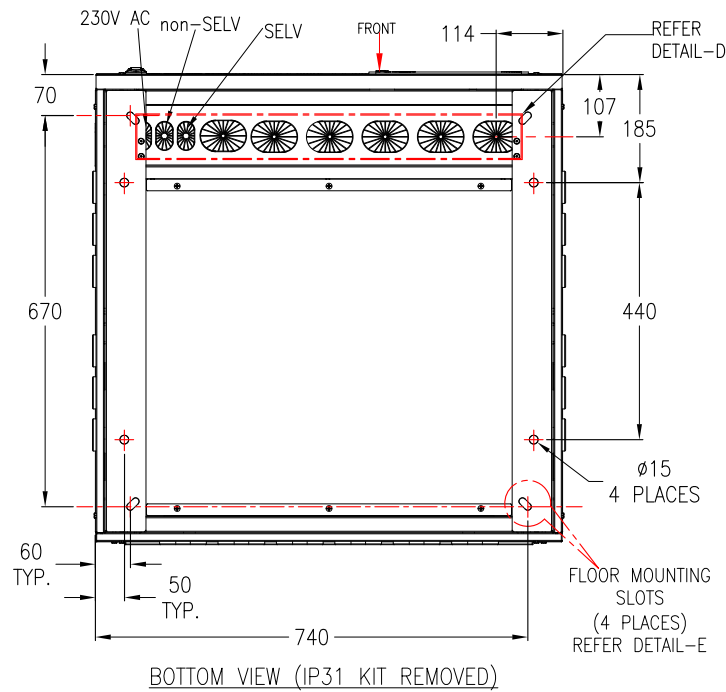
**TITLE:** Galaxy PW 2nd Gen  
UPS 10/20/30kVA 6 PULSE w INPUT\_XFMR  
Input: 380/400/415V, 3PH, 50Hz, SINGLE/DUAL MAINS  
Output: 220/230/240V, 1PH, 50Hz  
GENERAL ARRANGEMENT

**DWG NO:** EPWUPS10K30U6PTS

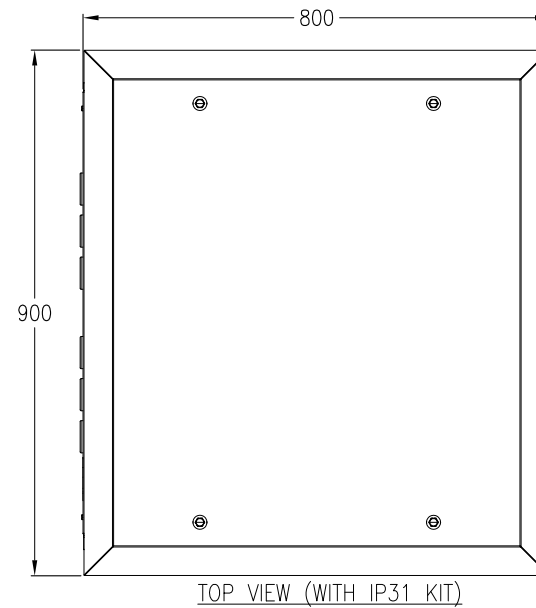
**REV.** 1

**PROJECT:** SUBMITTAL DRAWINGS **SHEET** 1 OF 7

<b>DRAWN:</b> BALA	08-NOV-20	<b>FIRST ANGLE PROJECTION</b>
<b>ENGINEER:</b> XIANG REN	08-NOV-20	
<b>APPROVED:</b> XIANG REN	08-NOV-20	



APPLICABLE NUMBER OF FANS	
UPS RATING (kVA)	APPLICABLE FANS
10	1-4
20	1-4
30	1-7



#### NOTES:

1. INSTALLATION SHALL COMPLY WITH ALL APPLICABLE NATIONAL, STATE AND LOCAL CODES.
  2. REFER TO PRODUCT DOCUMENTATION FOR ADDITIONAL DETAILS PRIOR TO INSTALLATION AND SITE PREPARATION WORK.
  3. ALL DIMENSIONS ARE IN MILLIMETERS.
  4. SOME STRUCTURAL DETAILS HAVE BEEN OMITTED FOR THE PURPOSE OF CLARITY.
- $\triangle 5$ . THIS INFORMATION PROVIDES APPROXIMATE CENTER OF GRAVITY CALCULATION.

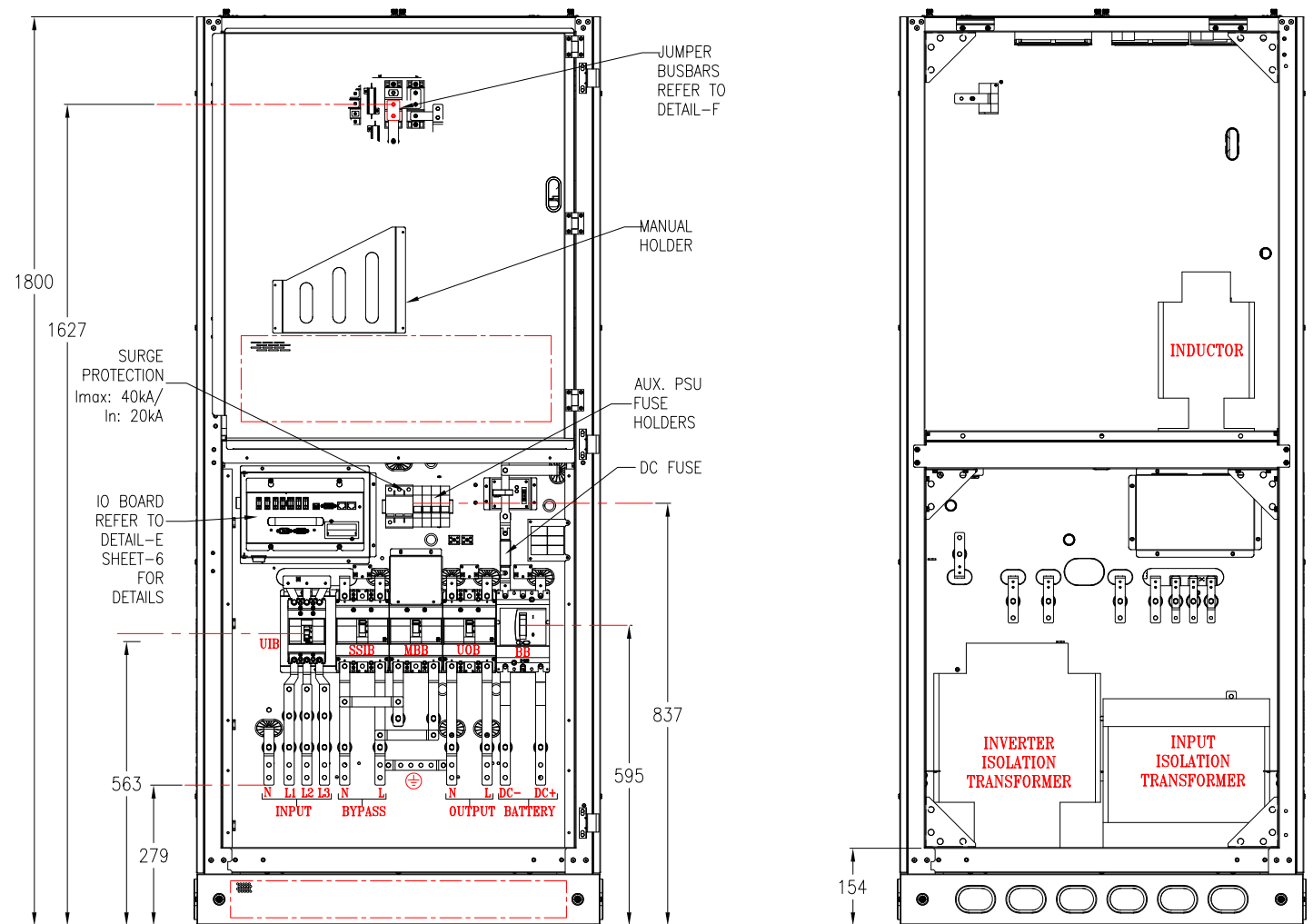
THIS DRAWING AND SPECIFICATIONS HEREIN ARE THE PROPERTY OF SCHNEIDER ELECTRIC AND SHALL NOT BE COPIED, REPRODUCED OR USED IN WHOLE OR IN PART, AS THE BASIS FOR THE MANUFACTURE OR SALE OF ITEMS WITHOUT WRITTEN PERMISSION FROM SCHNEIDER ELECTRIC. THIS DRAWING IS BASED UPON LATEST AVAILABLE INFORMATION AND IS SUBJECT TO CHANGE WITHOUT NOTICE.

**Schneider Electric**

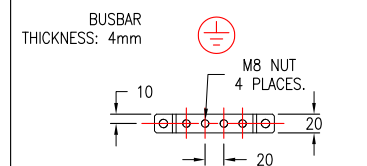
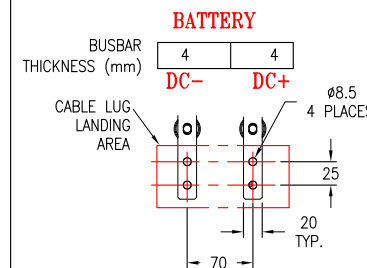
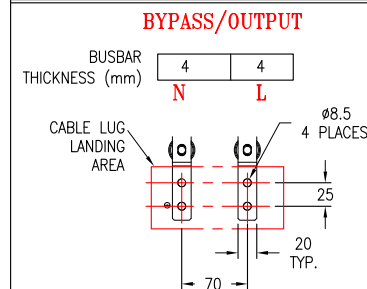
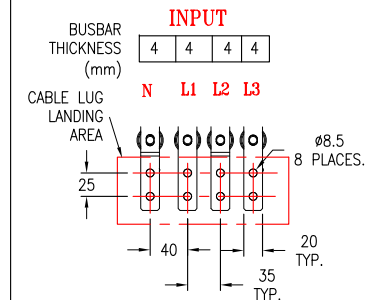
TITLE: Galaxy PW 2nd Gen  
UPS 10/20/30kVA 6 PULSE w/ INPUT\_XFMR  
Input: 380/400/415V, 3PH, 50Hz, SINGLE/DUAL MAINS  
Output: 220/230/240V, 1PH, 50Hz  
TOP AND BOTTOM VIEWS

DWG NO:	EPWUPS10K30U6PTS	REV.	0
DRAWN:	BALA	13-SEP-20	FIRST ANGLE
ENGINEER:	XIANG REN	18-SEP-20	PROJECTION
APPROVED:	XIANG REN	18-SEP-20	

PROJECT: SUBMITTAL DRAWINGS SHEET 2 OF 7

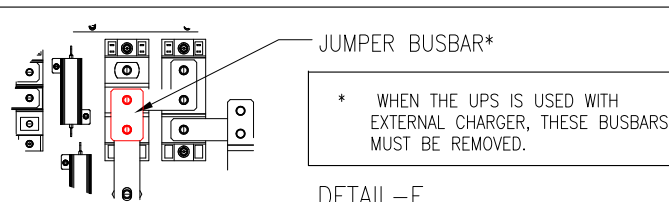


## INTERFACE BUSBARS



INTERNAL FRONT VIEW

INTERNAL REAR VIEW



## TRANSFORMER DETAILS (DRY TYPE)

UPS SKU NUMBER	INPUT ISOLATION TRANSFORMER DETAILS	OUTPUT ISOLATION TRANSFORMER DETAILS
EPWUPS10KU6PTS	25kVA, 50Hz, Vin: 380 VAC, Vout: 245/245, Dd0	20kVA, 50Hz, Vin: 96 VAC, Vout: 220 VAC, iio
EPWUPS20KU6PTS		
EPWUPS30KU6PTS	38kVA, 50HZ, VIN: 380 VAC, Vout: 245/245, Dd0	30kVA, 50Hz, Vin: 96 VAC, Vout: 220 VAC, iio

## NOTES:

1. INSTALLATION SHALL COMPLY WITH ALL APPLICABLE NATIONAL, STATE AND LOCAL CODES.
2. REFER TO PRODUCT DOCUMENTATION FOR ADDITIONAL DETAILS PRIOR TO INSTALLATION AND SITE PREPARATION WORK.
3. ALL DIMENSIONS ARE IN MILLIMETERS.
4. SOME STRUCTURAL DETAILS HAVE BEEN OMITTED FOR THE PURPOSE OF CLARITY.

THIS DRAWING AND SPECIFICATIONS HEREIN ARE THE PROPERTY OF SCHNEIDER ELECTRIC AND SHALL NOT BE COPIED, REPRODUCED OR USED IN WHOLE OR IN PART, AS THE BASIS FOR THE MANUFACTURE OR SALE OF ITEMS WITHOUT WRITTEN PERMISSION FROM SCHNEIDER ELECTRIC. THIS DRAWING IS BASED UPON LATEST AVAILABLE INFORMATION AND IS SUBJECT TO CHANGE WITHOUT NOTICE.

**Schneider Electric**

TITLE: Galaxy PW 2nd Gen  
UPS 10/20/30kVA 6 PULSE w/ INUPUT\_XFMR  
Input: 380/400/415V, 3PH, 50Hz, SINGLE/DUAL MAINS  
Output: 220/230/240V, 1PH, 50Hz  
INTERNAL VIEWS AND BUSBAR DETAILS

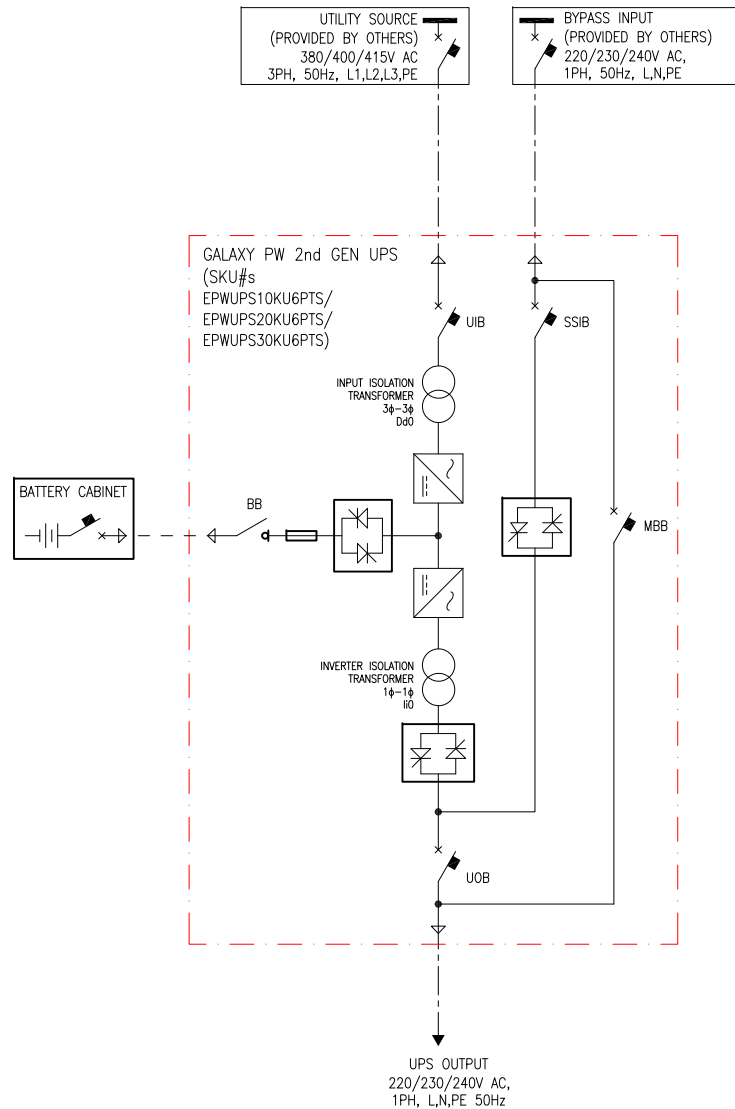
PROJECT: SUBMITTAL DRAWINGS SHEET 3 OF 7

DWG NO: EPWUPS10K30U6PTS

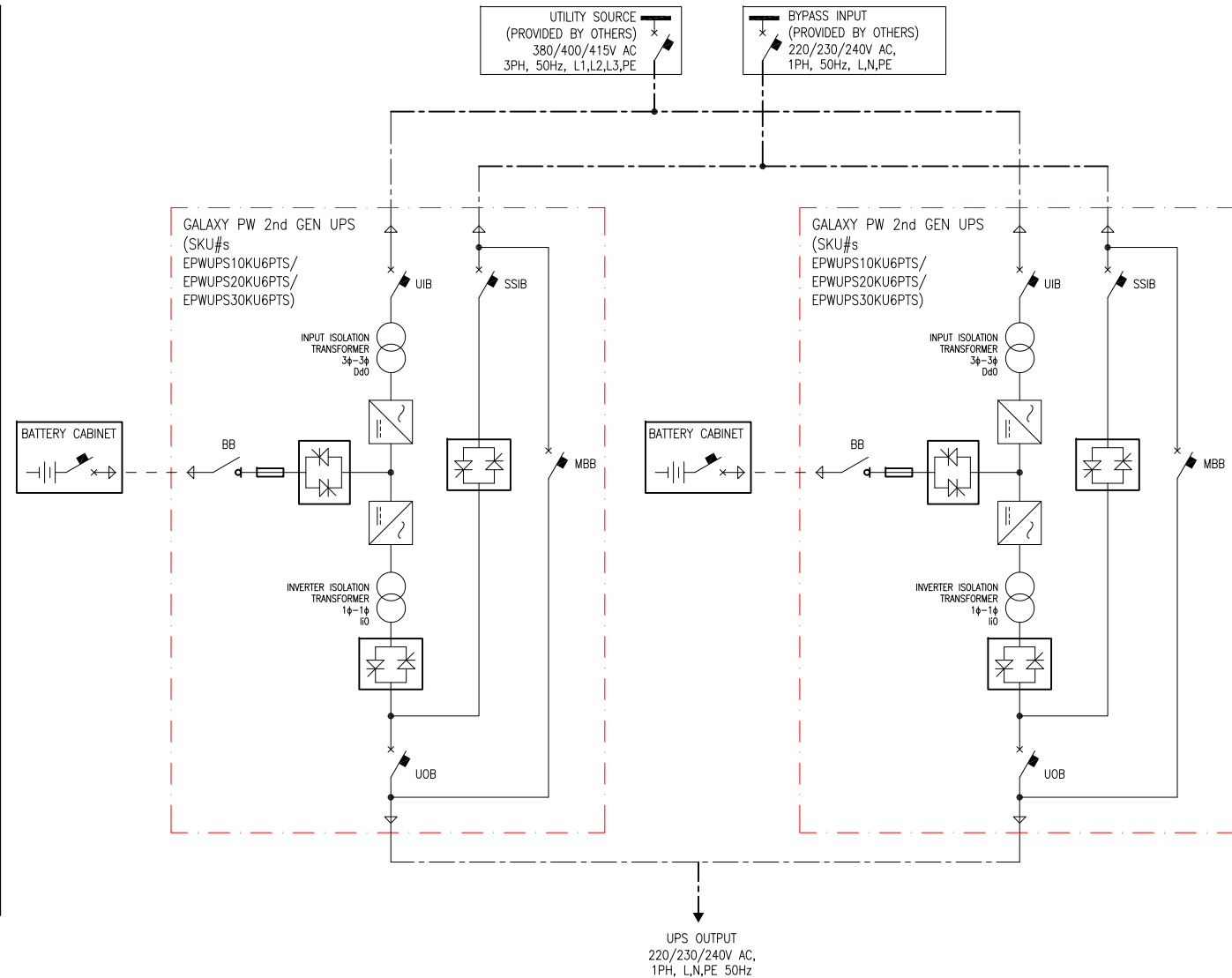
DRAWN: BALA 13-SEP-20  
ENGINEER: XIANG REN 18-SEP-20  
APPROVED: XIANG REN 18-SEP-20

REV. 0  
FIRST ANGLE PROJECTION

## 1 MODULE UPS SOLUTION



## 1+1 REDUNDANT PARALLEL UPS SOLUTION



### NOTES:

1. INSTALLATION SHALL COMPLY WITH ALL APPLICABLE NATIONAL, STATE AND LOCAL CODES.
2. REFER TO PRODUCT INSTALLATION DOCUMENTATION FOR SITE PREPARATIONS.
3. DRAWING DEPICTS POWER SYSTEM CONNECTIONS AND IS NOT REPRESENTATIVE OF PHYSICAL LAYOUT. REFER TO MECHANICAL DRAWINGS FOR EQUIPMENT LAYOUT.
4. FINAL SELECTIONS ARE RESPONSIBILITY OF ENGINEER OF RECORDS BASED ON INSTALLED CONDITIONS AND SCC/SELECTIVE CO-ORDINATION/ARC-FLASH ANALYSIS.
5. MAXIMUM 4 UPSs (4 CAPACITY OR 3(N+1)) CAN BE PARALLELED.

THIS DRAWING AND SPECIFICATIONS HEREIN ARE THE PROPERTY OF SCHNEIDER ELECTRIC AND SHALL NOT BE COPIED, REPRODUCED OR USED IN WHOLE OR IN PART, AS THE BASIS FOR THE MANUFACTURE OR SALE OF ITEMS WITHOUT WRITTEN PERMISSION FROM SCHNEIDER ELECTRIC. THIS DRAWING IS BASED UPON LATEST AVAILABLE INFORMATION AND IS SUBJECT TO CHANGE WITHOUT NOTICE.

**Schneider Electric**

TITLE: Galaxy PW 2nd Gen  
UPS 10/20/30kVA 6 PULSE w INPUT\_XFMR  
Input: 380/400/415V, 3PH, 50Hz, DUAL MAINS  
Output: 220/230/240V, 1PH, 50Hz  
SYSTEM ONE LINE DIAGRAM

PROJECT: SUBMITTAL DRAWINGS SHEET 4 OF 7

LEGEND:  
 --- AC CABLE (PROVIDED BY OTHERS)  
 --- 500VDC CABLE (PROVIDED BY OTHERS)  
 UIB -- - UNIT INPUT BREAKER  
 SSIB---STATIC SWITCH INPUT BREAKER  
 BB-----BATTERY BREAKER  
 MBB---MAINTENANCE BYPASS BREAKER  
 UOB---UNIT OUTPUT BREAKER

DWG NO: EPWUPS10K30U6PTS

DRAWN: BALA 25-MAR-21

ENGINEER: XIANG REN 9-APR-21

APPROVED: XIANG REN 9-APR-21

REV. 1

ANGLE OF PROJECTION  
N.A.

GALAXY PW 2ND GENERATION 10/20/30 kVA 1 MODULE UPS SITE PLANNING DATA									
MAINS INPUT (SINGLE MAINS): 380/400/415V AC, 50Hz 3PH L1,L2,L3,PE					BYPASS INPUT: 220/230/240V AC, 50Hz, 1PH, L1,N,PE				
OUTPUT: 220/230/240V AC, 50Hz, 1PH L1,N,PE									
UPS RATING (kVA)	UPS SKU NUMBER	NOMINAL MAINS INPUT CURRENT (A) @380/400/415V AC	MAXIMUM MAINS INPUT CURRENT (A) @380/400/415V AC	NOMINAL BYPASS INPUT CURRENT (A) @220/230/240V AC	UPS/ SYSTEM OUTPUT CURRENT @220/230/240V AC	BATTERY CURRENT @ FULL LOAD AND NOMINAL Vbat (V)	BATTERY CURRENT @ FULL LOAD AND MINIMUM Vbat (V)	RECOMMENDED OVER CURRENT PROTECTION DEVICE MODEL(PART NUMBER)/In/Ir/Im SETTING (MAKE:-SCHNEIDER ELECTRIC)	
								MAINS INPUT	BYPASS INPUT
10	EPWUPS10KU6PTS	22/20/20	27/26/25	45/43/42	45/43/42	46	58	NSX100F TM32D 3P3D (LV429635)/32/29/190(FIXED)	NSX100F TM50D 3P3D (LV429633)/50/50/500(FIXED)
20	EPWUPS20KU6PTS	40/38/37	50/48/46	91/87/83	91/87/83	93	115	NSX100F TM63D 3P3D (LV429632)/63/50/500(FIXED)	NSX100F TM100D 3P3D (LV429630)/100/100/800(FIXED)
30	EPWUPS30KU6PTS	58/55/53	73/69/67	136/130/125	136/130/125	139	173	NSX100F TM100D 3P3D (LV429630)/100/80/800(FIXED)	NSX160F TM160D 3P3D (LV430630)/160/144/1250(FIXED)

GALAXY PW 2ND GENERATION 10/20/30 kVA RECOMMENDED CABLE SIZES**							
UPS RATING (kVA)	UPS SKU NUMBER	AC CABLES (IN SQMM)				DC CABLES (IN SQMM)	
		INPUT PHASES	INPUT PE	BYPASS/ OUTPUT PHASES	BYPASS/ OUTPUT PE	DC+/DC-	DC PE
10	EPWUPS10KU6PTS	16	16	16	16	16	16
20	EPWUPS20KU6PTS	16	16	16	16	25	16
30	EPWUPS30KU6PTS	16	16	25	16	35	16

- \*\* CABLE SIZES ARE BASED ON TABLE B.52.12 OF IEC 60364-5-52 WITH THE FOLLOWING ASSERTIONS:-
- a) 90° C CONDUCTORS, AN AMBIENT TEMPERATURE OF 30° c.
  - b) USE OF COPPER CONDUCTORS, INSTALLATION METHOD F.
  - c) PE CABLE SIZE BASED ON TABLE 54.2 OF IEC 60364-4-54.
  - d) IF THE AMBIENT TEMPERATURE IS GREATER THAN 30° C, LARGER CONDUCTORS ARE TO BE SELECTED IN ACCORDANCE WITH THE CORRECTION FACTORS OF THE IEC.

NOTES:

1. INSTALLATION SHALL COMPLY WITH ALL APPLICABLE NATIONAL, STATE AND LOCAL CODES.
2. REFER TO PRODUCT INSTALLATION DOCUMENTATION FOR SITE PREPARATIONS.
3. DRAWING DEPICTS POWER SYSTEM CONNECTIONS AND IS NOT REPRESENTATIVE OF PHYSICAL LAYOUT. REFER TO MECHANICAL DRAWINGS FOR EQUIPMENT LAYOUT.
4. FINAL SELECTIONS ARE RESPONSIBILITY OF ENGINEER OF RECORDS BASED ON INSTALLED CONDITIONS AND SCC/SELECTIVE CO-ORDINATION/ARC-FLASH ANALYSIS.

THIS DRAWING AND SPECIFICATIONS HEREIN ARE THE PROPERTY OF SCHNEIDER ELECTRIC AND SHALL NOT BE COPIED, REPRODUCED OR USED IN WHOLE OR IN PART, AS THE BASIS FOR THE MANUFACTURE OR SALE OF ITEMS WITHOUT WRITTEN PERMISSION FROM SCHNEIDER ELECTRIC. THIS DRAWING IS BASED UPON LATEST AVAILABLE INFORMATION AND IS SUBJECT TO CHANGE WITHOUT NOTICE.



TITLE: Galaxy PW 2nd Gen  
UPS 10/20/30kVA 6 PULSE w INPUT\_XFMR  
Input: 380/400/415V, 3PH, 50Hz, DUAL MAINS  
Output: 220/230/240V, 1PH, 50Hz  
SITE PLANNING DATA

DWG NO: EPWUPS10K30U6PTS

REV. 1

DRAWN: BALA 8-NOV-20

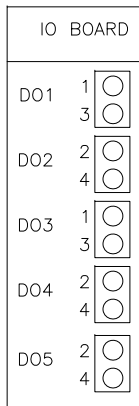
ENGINEER: XIANG REN 8-NOV-20

PROJECT: SUBMITTAL DRAWINGS SHEET 5 OF 7

APPROVED: XIANG REN 8-NOV-20

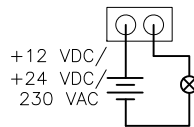
ANGLE OF PROJECTION  
N.A

# CONFIGURABLE OUTPUT DRY CONTACTS

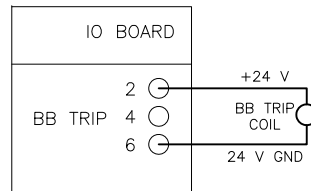


D01, D02, D03, D04, 05  
CONFIGURABLE FUNCTIONS  
(DEFAULT 0, 0, 0, 0, 0)

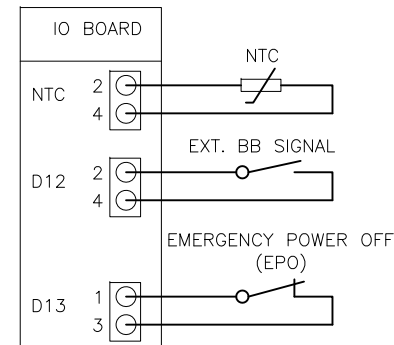
0: OFF  
1: COMMON ALARM  
2: NORMAL OPERATION  
3: BATTERY OPERATION  
4: STATIC BYPASS  
5: OUTPUT OVERLOAD  
6: FAN INOPERABLE  
7: BATTERY FAULT  
8: BATTERY DISCONNECTED  
9: BATTERY VOLTAGE LOW  
10: INPUT OUT OF TOLERANCE  
11: BYPASS OUT OF TOLERANCE  
12: EPO ACTIVATED  
13: MAINTENANCE MODE  
14: BACKFEED ON INPUT  
15: BACKFEED ON BYPASS



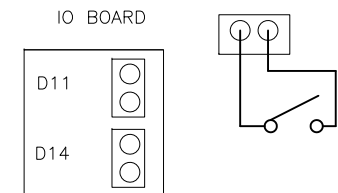
# FIXED OUTPUT DRY CONTACTS



# FIXED INPUT DRY CONTACTS



# CONFIGURABLE INPUT DRY CONTACTS



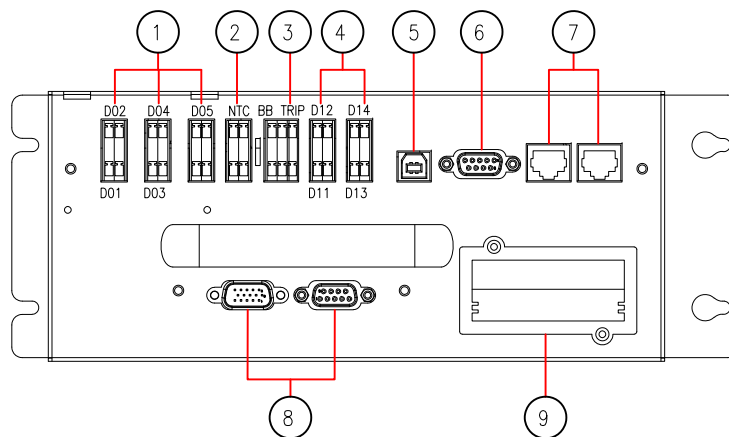
D11, D14 (DEFAULT 0, 0)  
CONFIGURABLE FUNCTIONS

0: OFF  
1: UPS ON  
2: UPS OFF  
3: BATTERY FAULT  
4: GENSET ENABLE  
5: CUSTOM ALARM 1  
6: CUSTOM ALARM 2  
7: DISABLE ECO  
8: FORCE INVERTER OFF

# SPECIFICATIONS OF INPUT AND OUTPUT RELAYS

TYPE OF CONTACT	PARAMETER	TYPICAL	MAXIMUM
INPUT	VOLTAGE (V)	NA	5
	CURRENT (mA)	NA	15
OUTPUT	VOLTAGE (V)	24 VDC	230 VAC
	CURRENT (A)	NA	3

△A. MAXIMUM 5A/250 VAX, 3 A/30 VDC MUST BE CONNECTED TO THE OUTPUT CONTACTS. THE RECOMMENDED CABLE IS 0.5–1 Sqmm. THE OUTPUT DRY CONTACTS PROVIDE TWO PASSIVE STATUSES: SHORT AND OPEN. THE OUTPUT CONTACTS MUST BE CONNECTED TO AN EXTERNAL POWER SUPPLY TO TRIGGER THE FUNCTION.



DETAIL-E (ROTATED/ENLARGED) (IO BOARD)

- OUTPUT DRY CONTACTS (230 VAC)
- EXTERNAL BATTERY TEMPERATURE INPUT CONTACT (NON-SELV)
- BB TRIP OUTPUT CONTACT (SELV)
- INPUT DRY CONTACTS (SELV)
- USB PORT (SELV)
- RS232 PORTS (SELV)
- RS485 PORTS (SELV)
- PARALLEL PORTS (SELV)
- INTELLIGENT SLOT FOR SNMP CARD (SELV)

## COMMON NOTES:

- INSTALLATION SHALL COMPLY WITH ALL APPLICABLE NATIONAL, STATE AND LOCAL CODES.
- REFER TO PRODUCT INSTALLATION DOCUMENTATION FOR SITE PREPARATIONS.
- RUN THE SELV CABLES SEPARATELY FROM THE non-SELV CABLES.

THIS DRAWING AND SPECIFICATIONS HEREIN ARE THE PROPERTY OF SCHNEIDER ELECTRIC AND SHALL NOT BE COPIED, REPRODUCED OR USED IN WHOLE OR IN PART, AS THE BASIS FOR THE MANUFACTURE OR SALE OF ITEMS WITHOUT WRITTEN PERMISSION FROM SCHNEIDER ELECTRIC. THIS DRAWING IS BASED UPON LATEST AVAILABLE INFORMATION AND IS SUBJECT TO CHANGE WITHOUT NOTICE.

**Schneider Electric**

TITLE: Galaxy PW 2nd Gen  
UPS 10/20/30kVA 6 PULSE w INPUT\_XFMR  
Input: 380/400/415V, 3PH, 50Hz, DUAL MAINS  
Output: 220/230/240V, 1PH, 50Hz  
UPS INTERFACE DETAILS-1

DWG NO: EPWUPS10K30U6PTS

REV. 1

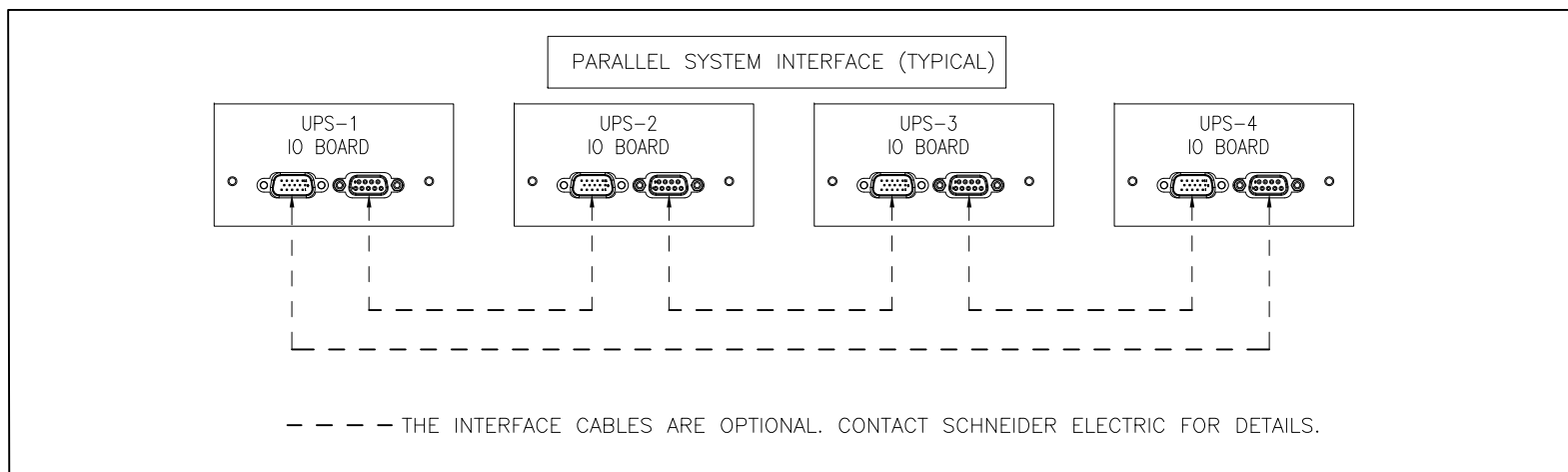
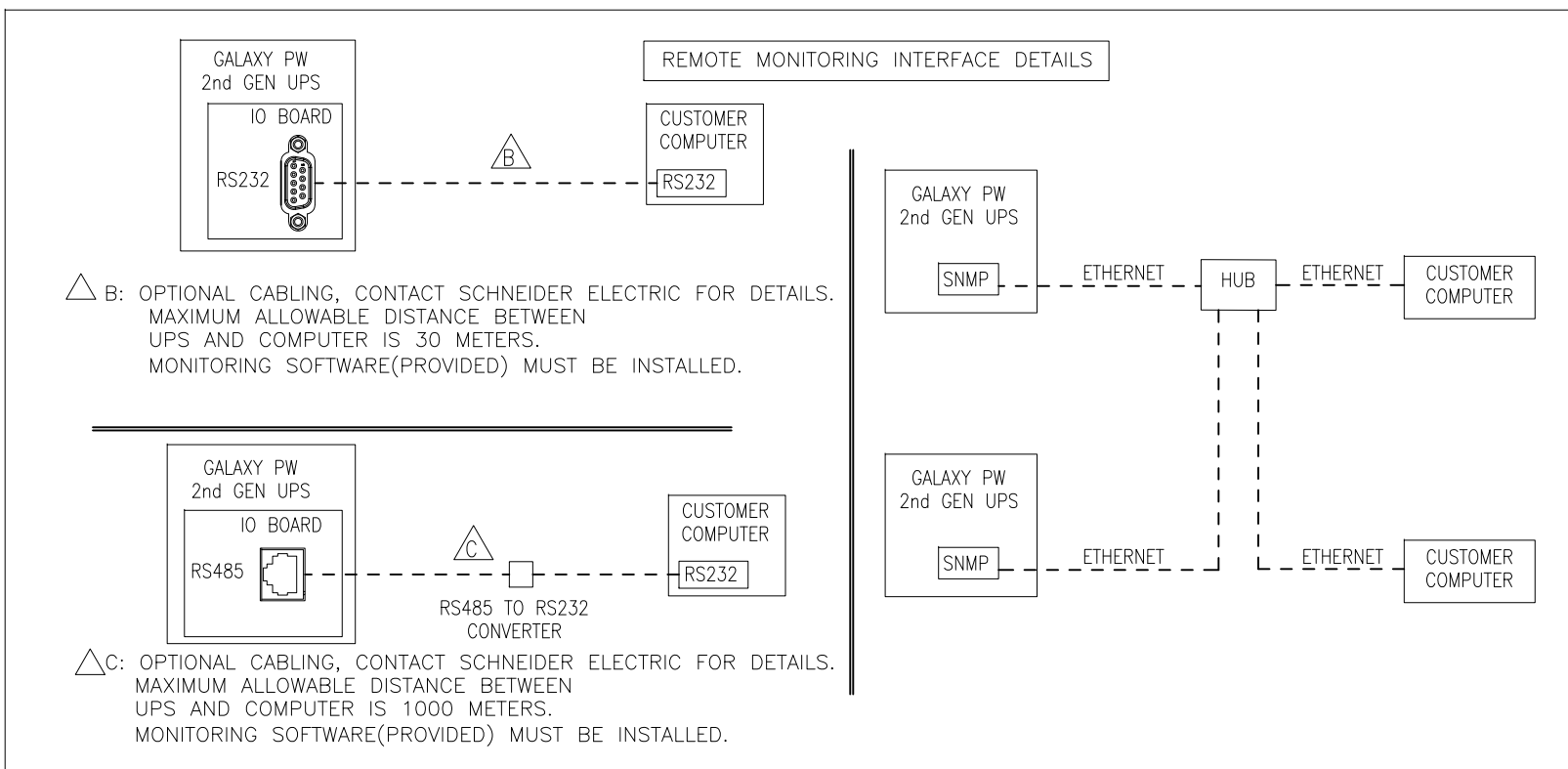
DRAWN: BALA 25-MAR-21

ENGINEER: XIANG REN 9-APR-21

APPROVED: XIANG REN 9-APR-21

PROJECT: SUBMITTAL DRAWINGS SHEET 6 OF 7

ANGLE OF PROJECTION  
N.A.



COMMON NOTES:

1. INSTALLATION SHALL COMPLY WITH ALL APPLICABLE NATIONAL, STATE AND LOCAL CODES.
2. REFER TO PRODUCT INSTALLATION DOCUMENTATION FOR SITE PREPARATIONS.
3. RUN THE SELV CABLES SEPARATELY FROM THE non-SELV CABLES.

THIS DRAWING AND SPECIFICATIONS HEREIN ARE THE PROPERTY OF SCHNEIDER ELECTRIC AND SHALL NOT BE COPIED, REPRODUCED OR USED IN WHOLE OR IN PART, AS THE BASIS FOR THE MANUFACTURE OR SALE OF ITEMS WITHOUT WRITTEN PERMISSION FROM SCHNEIDER ELECTRIC. THIS DRAWING IS BASED UPON LATEST AVAILABLE INFORMATION AND IS SUBJECT TO CHANGE WITHOUT NOTICE.

**Schneider  
Electric**

TITLE: Galaxy PW 2nd Gen  
UPS 10/20/30kVA 6 PULSE w INPUT\_XFMR  
Input: 380/400/415V, 3PH, 50Hz, DUAL MAINS  
Output: 220/230/240V, 1PH, 50Hz  
UPS INTERFACE DETAILS-2

DWG NO: EPWUPS10K30U6PTS

REV. 0

DRAWN: BALA 13-SEP-20

ENGINEER: XIANG REN 18-SEP-20

APPROVED: XIANG REN 18-SEP-20

PROJECT: SUBMITTAL DRAWINGS SHEET 7 OF 7

ANGLE OF  
PROJECTION  
N.A.