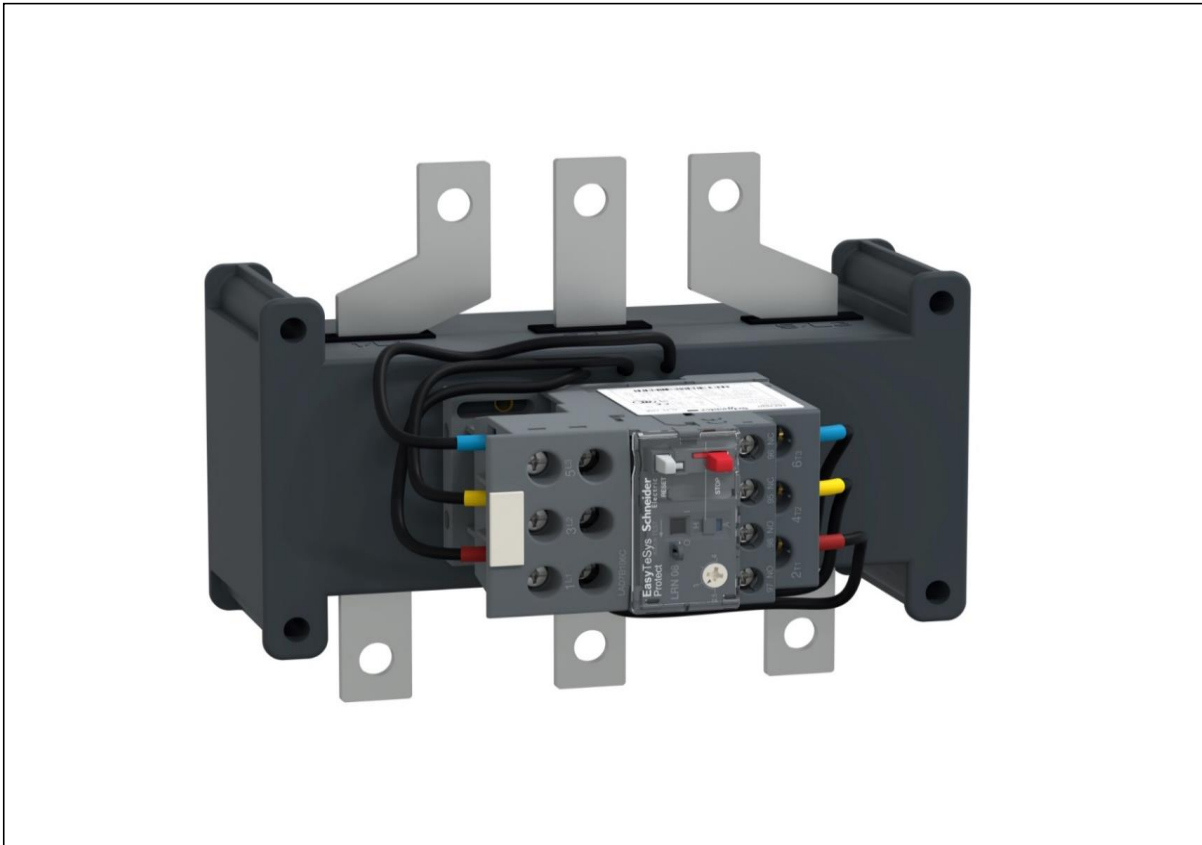


Product Environmental Profile

Easy TeSys Protect D3N 84-135A-Class 10A

Easy TeSys





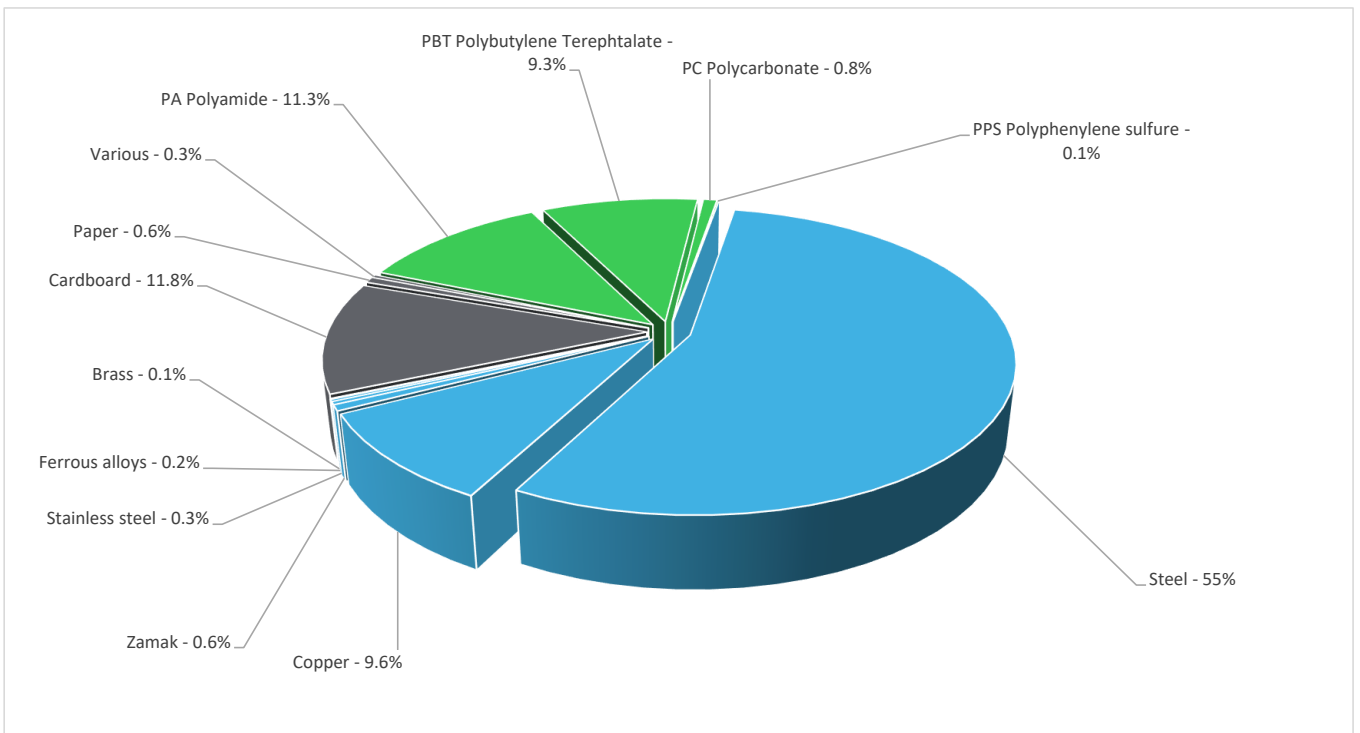
General information

Reference product	Easy TeSys Protect D3N 84-135A-Class 10A - LRE482
Description of the product	The main purpose of the thermal overload relays is to detect overload currents in order to protect the motor.
Description of the range	The environmental impacts of this reference product are representative of the impacts of the other products of the range which are developed with a similar technology. This range consists of Easy TeSys thermal overload relays 84-135A class, the representative product used for analysis is Easy TeSys thermal overload relays(LRE482).
Functional unit	Other switchgear and controlgear solutions mentioned in the scope (e.g. fuses TC32, all-or-nothing relays TC94, Measuring relays and protection equipment TC95), apply the general rules of PCR and mention in the accompanying report the functional unit, the reference product characteristics, the reference lifetime and the use scenario which are applied consistently with the relevant IEC technical standards.
Specifications are:	The functional unit of the LRE482 is to detect overload currents in order to protect the load for 20 years. Standardized product characteristics to provide: rated insulation voltage[Ui]: 690V conventional free air thermal current[I _{th}]: 5A rated operational voltage[U _e]: 690V AC rated impulse withstand voltage:[U _{imp}]: 6KV thermal protection adjustment range[e]: 84-135A tripping class:10A



Constituent materials

Reference product mass 2490 g including the product, its packaging, additional elements and accessories



Plastics	21.5%
Metals	65.8%
Others	12.7%

Substance assessment

Details of ROHS and REACH substances information are available on the Schneider-Electric website
<https://www.se.com>

Additional environmental information

End Of Life	Recyclability potential:	74%	The recyclability rate was calculated from the recycling rates of each material making up the product based on REECYLAB tool developed by Ecosystem, for components/materials not covered by the tool, data from the EIME database and the related PSR was taken. If no data was found a conservative assumption was used (0% recyclability).
-------------	--------------------------	-----	---

Environmental impacts

Reference service life time	20 years		
Product category	Other equipments - Passive product - non-continuous operation		
Life cycle of the product	The manufacturing, the distribution, the installation, the use and the end of life were taken into consideration in this study		
Electricity consumption	The electricity consumed during manufacturing processes is considered for each part of the product individually, the final assembly generates a negligible consumption		
Installation elements	Under contactor Base plate mounting, with special accessories		
Use scenario	See PSR		
Time representativeness	The collected data are representative of the year 2024		
Technological representativeness	The Modules of Technologies such as material production, manufacturing processes and transport technology used in the PEP analysis (LCA EIME in the case) are Similar and representative of the actual type of technologies used to make the product.		
Geographical representativeness	Final assembly site	Use phase	
	China	China	
Energy model used	[A1 - A3]	[A5]	[B6]
	Electricity Mix; Low voltage; 2020; China, CN	No energy used	Electricity Mix; Low voltage; 2020; India, IN
			[C1 - C4]
			Electricity Mix;Low voltage; 2020;China,CN

Detailed results of the optional indicators mentioned in PCRed4 are available in the LCA report and on demand in a digital format - Country Customer Care Center - <http://www.se.com/contact>

Mandatory Indicators		Easy TeSys Protect D3N 84-135A-Class 10A - LRE482						
Impact indicators	Unit	Total (without Module D)	[A1 - A3] - Manufacturing	[A4] - Distribution	[A5] - Installation	[B1 - B7] - Use	[C1 - C4] - End of life	[D] - Benefits and loads
Contribution to climate change	kg CO2 eq	8.82E+01	1.91E+01	1.13E-01	1.10E-02	6.56E+01	3.34E+00	-5.41E+00
Contribution to climate change-fossil	kg CO2 eq	8.81E+01	1.92E+01	1.13E-01	1.11E-02	6.55E+01	3.33E+00	-5.35E+00
Contribution to climate change-biogenic	kg CO2 eq	3.61E-02	0*	0*	0*	1.10E-01	9.42E-03	-5.45E-02
Contribution to climate change-land use and land use change	kg CO2 eq	3.00E-05	2.92E-05	0*	0*	0*	7.75E-07	0.00E+00
Contribution to ozone depletion	kg CFC-11 eq	3.52E-06	3.05E-06	0*	4.51E-10	3.83E-07	8.81E-08	-8.72E-07
Contribution to acidification	mol H+ eq	6.79E-01	1.59E-01	4.58E-03	1.53E-04	5.01E-01	1.37E-02	-6.53E-02
Contribution to eutrophication, freshwater	kg P eq	1.05E-04	9.19E-05	3.82E-08	5.61E-08	6.95E-06	6.51E-06	-8.13E-06
Contribution to eutrophication, marine	kg N eq	7.16E-02	1.43E-02	1.05E-03	7.21E-05	5.34E-02	2.73E-03	-3.37E-03
Contribution to eutrophication, terrestrial	mol N eq	8.08E-01	1.56E-01	1.15E-02	7.35E-04	6.08E-01	3.13E-02	-3.94E-02
Contribution to photochemical ozone formation - human health	kg COVNM eq	2.51E-01	6.13E-02	2.95E-03	1.76E-04	1.78E-01	8.44E-03	-1.56E-02
Contribution to resource use, minerals and metals	kg Sb eq	1.37E-02	1.37E-02	0*	0*	3.55E-06	0*	-1.93E-03
Contribution to resource use, fossils	MJ	1.51E+03	4.29E+02	1.40E+00	0*	1.04E+03	3.60E+01	-1.23E+02
Contribution to water use	m3 eq	1.27E+01	8.12E+00	0*	2.68E-02	3.44E+00	1.07E+00	-3.89E+00

Inventory flows Indicators		Easy TeSys Protect D3N 84-135A-Class 10A - LRE482						
Inventory flows	Unit	Total (without Module D)	[A1 - A3] - Manufacturing	[A4] - Distribution	[A5] - Installation	[B1 - B7] - Use	[C1 - C4] - End of life	[D] - Benefits and loads
Contribution to renewable primary energy used as energy	MJ	5.91E+01	2.45E+00	0*	0*	5.48E+01	1.92E+00	-1.85E+00
Contribution to renewable primary energy used as raw material	MJ	5.62E+00	5.62E+00	0*	0*	0*	0*	0.00E+00
Contribution to total renewable primary energy	MJ	6.47E+01	8.07E+00	0*	0*	5.48E+01	1.92E+00	-1.85E+00
Contribution to non renewable primary energy used as energy	MJ	1.49E+03	4.14E+02	1.40E+00	0*	1.04E+03	3.60E+01	-1.23E+02
Contribution to non renewable primary energy used as raw material	MJ	1.58E+01	1.58E+01	0*	0*	0*	0*	0.00E+00
Contribution to total non renewable primary energy	MJ	1.51E+03	4.29E+02	1.40E+00	0*	1.04E+03	3.60E+01	-1.23E+02
Contribution to use of secondary material	kg	0.00E+00	0*	0*	0*	0*	0*	0.00E+00
Contribution to use of renewable secondary fuels	MJ	0.00E+00	0*	0*	0*	0*	0*	0.00E+00
Contribution to use of non renewable secondary fuels	MJ	0.00E+00	0*	0*	0*	0*	0*	0.00E+00
Contribution to net use of fresh water	m³	3.39E-01	1.89E-01	0*	6.25E-04	8.01E-02	6.86E-02	-9.05E-02
Contribution to hazardous waste disposed	kg	1.81E+02	1.79E+02	0*	0*	2.09E+00	2.71E-01	-1.52E+02
Contribution to non hazardous waste disposed	kg	2.81E+01	1.39E+01	3.35E-03	2.93E-01	1.18E+01	2.09E+00	-4.09E+00
Contribution to radioactive waste disposed	kg	4.13E-03	3.61E-03	2.31E-06	0*	4.13E-04	1.02E-04	-1.86E-03
Contribution to components for reuse	kg	0.00E+00	0*	0*	0*	0*	0*	0.00E+00
Contribution to materials for recycling	kg	1.61E+00	8.62E-02	0*	0*	0*	1.53E+00	0.00E+00
Contribution to materials for energy recovery	kg	0.00E+00	0*	0*	0*	0*	0*	0.00E+00
Contribution to exported energy	MJ	1.60E-02	8.94E-04	0*	0*	0*	1.51E-02	0.00E+00

* represents less than 0.01% of the total life cycle of the reference flow

Contribution to biogenic carbon content of the product kg of C 0.00E+00

Contribution to biogenic carbon content of the associated packaging kg of C 8.34E-02

* The calculation of the biogenic carbon is based on the Ademe for the Cardboard (28%), EN16485 for Wood (39,52%), and APESA/RECORD for Paper (37,8%)

Mandatory Indicators		Easy TeSys Protect D3N 84-135A-Class 10A - LRE482							
Impact indicators	Unit	[B1 - B7] - Use	[B1]	[B2]	[B3]	[B4]	[B5]	[B6]	[B7]
Contribution to climate change	kg CO2 eq	6.56E+01	0*	0*	0*	0*	0*	6.56E+01	0*
Contribution to climate change-fossil	kg CO2 eq	6.55E+01	0*	0*	0*	0*	0*	6.55E+01	0*
Contribution to climate change-biogenic	kg CO2 eq	1.10E-01	0*	0*	0*	0*	0*	1.10E-01	0*
Contribution to climate change-land use and land use change	kg CO2 eq	0*	0*	0*	0*	0*	0*	0*	0*
Contribution to ozone depletion	kg CFC-11 eq	3.83E-07	0*	0*	0*	0*	0*	3.83E-07	0*
Contribution to acidification	mol H+ eq	5.01E-01	0*	0*	0*	0*	0*	5.01E-01	0*
Contribution to eutrophication, freshwater	kg P eq	6.95E-06	0*	0*	0*	0*	0*	6.95E-06	0*
Contribution to eutrophication marine	kg N eq	5.34E-02	0*	0*	0*	0*	0*	5.34E-02	0*
Contribution to eutrophication, terrestrial	mol N eq	6.08E-01	0*	0*	0*	0*	0*	6.08E-01	0*
Contribution to photochemical ozone formation - human health	kg COVNM eq	1.78E-01	0*	0*	0*	0*	0*	1.78E-01	0*
Contribution to resource use, minerals and metals	kg Sb eq	3.55E-06	0*	0*	0*	0*	0*	3.55E-06	0*
Contribution to resource use, fossils	MJ	1.04E+03	0*	0*	0*	0*	0*	1.04E+03	0*
Contribution to water use	m3 eq	3.44E+00	0*	0*	0*	0*	0*	3.44E+00	0*

Inventory flows Indicators		Easy TeSys Protect D3N 84-135A-Class 10A - LRE482							
Inventory flows	Unit	[B1 - B7] - Use	[B1]	[B2]	[B3]	[B4]	[B5]	[B6]	[B7]
Contribution to use of renewable primary energy excluding renewable primary energy used as raw material	MJ	5.48E+01	0*	0*	0*	0*	0*	5.48E+01	0*
Contribution to use of renewable primary energy resources used as raw material	MJ	0*	0*	0*	0*	0*	0*	0*	0*
Contribution to total use of renewable primary energy resources	MJ	5.48E+01	0*	0*	0*	0*	0*	5.48E+01	0*
Contribution to use of non renewable primary energy excluding non renewable primary energy used as raw material	MJ	1.04E+03	0*	0*	0*	0*	0*	1.04E+03	0*
Contribution to use of non renewable primary energy resources used as raw material	MJ	0*	0*	0*	0*	0*	0*	0*	0*
Contribution to total use of non-renewable primary energy resources	MJ	1.04E+03	0*	0*	0*	0*	0*	1.04E+03	0*
Contribution to use of secondary material	kg	0*	0*	0*	0*	0*	0*	0*	0*
Contribution to use of renewable secondary fuels	MJ	0*	0*	0*	0*	0*	0*	0*	0*
Contribution to use of non renewable secondary fuels	MJ	0*	0*	0*	0*	0*	0*	0*	0*
Contribution to net use of freshwater	m³	8.01E-02	0*	0*	0*	0*	0*	8.01E-02	0*
Contribution to hazardous waste disposed	kg	2.09E+00	0*	0*	0*	0*	0*	2.09E+00	0*
Contribution to non hazardous waste disposed	kg	1.18E+01	0*	0*	0*	0*	0*	1.18E+01	0*
Contribution to radioactive waste disposed	kg	4.13E-04	0*	0*	0*	0*	0*	4.13E-04	0*
Contribution to components for reuse	kg	0*	0*	0*	0*	0*	0*	0*	0*
Contribution to materials for recycling	kg	0*	0*	0*	0*	0*	0*	0*	0*
Contribution to materials for energy recovery	kg	0*	0*	0*	0*	0*	0*	0*	0*
Contribution to exported energy	MJ	0*	0*	0*	0*	0*	0*	0*	0*

* represents less than 0.01% of the total life cycle of the reference flow

Life cycle assessment performed with EIME version v6.2.4, database version 2024-01 in compliance with ISO14044, EF3.1 method is applied, for biogenic carbon storage, assessment methodology -1/1 is used

According to this environmental analysis, proportionality rules may be used to evaluate the impacts of other products of this range, ratios to apply can be provided upon request

Please note that the values given above are only valid within the context specified and cannot be used directly to draw up the environmental assessment of an installation.

Registration number :	ENVPEP2504042_V1	Drafting rules	PEP-PCR-ed4-2021 09 06
Date of issue	27/03/2025	Supplemented by	PSR-0005-ed3-2023 06 06
		Information and reference documents	www.pep-ecopassport.org
		Validity period	5 years
Independent verification of the declaration and data, in compliance with ISO 14021 : 2016			
Internal	X	External	
The PCR review was conducted by a panel of experts chaired by Julie Orgelet (DDemain)			
PEPs are compliant with XP C08-100-1:2016 and EN 50693:2019 or NF E38-500 :2022			
The components of the present PEP may not be compared with components from any other program.			
Document complies with ISO 14021:2016 "Environmental labels and declarations. Type II environmental declarations"			

Schneider Electric Industries SAS
 Country Customer Care Center
<http://www.se.com/contact>
 Head Office
 35, rue Joseph Monier
 CS 30323
 F- 92500 Rueil Malmaison Cedex
 RCS Nanterre 954 503 439
 Capital social 928 298 512 €

www.se.com

ENVPEP2504042_V1

Published by Schneider Electric

©2024 - Schneider Electric – All rights reserved

27/03/2025