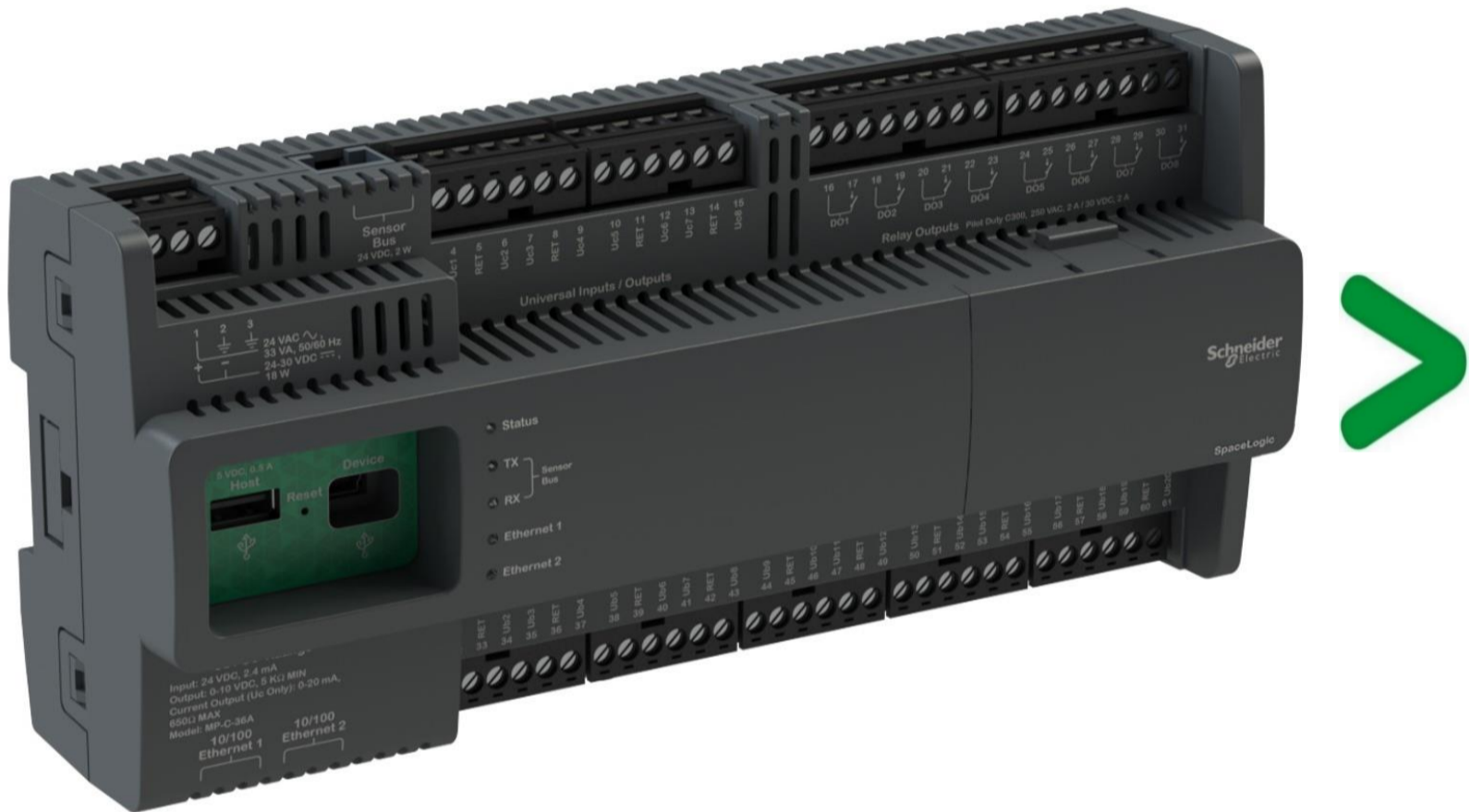


# Product Environmental Profile

## SpaceLogic MP-C-36A Controller





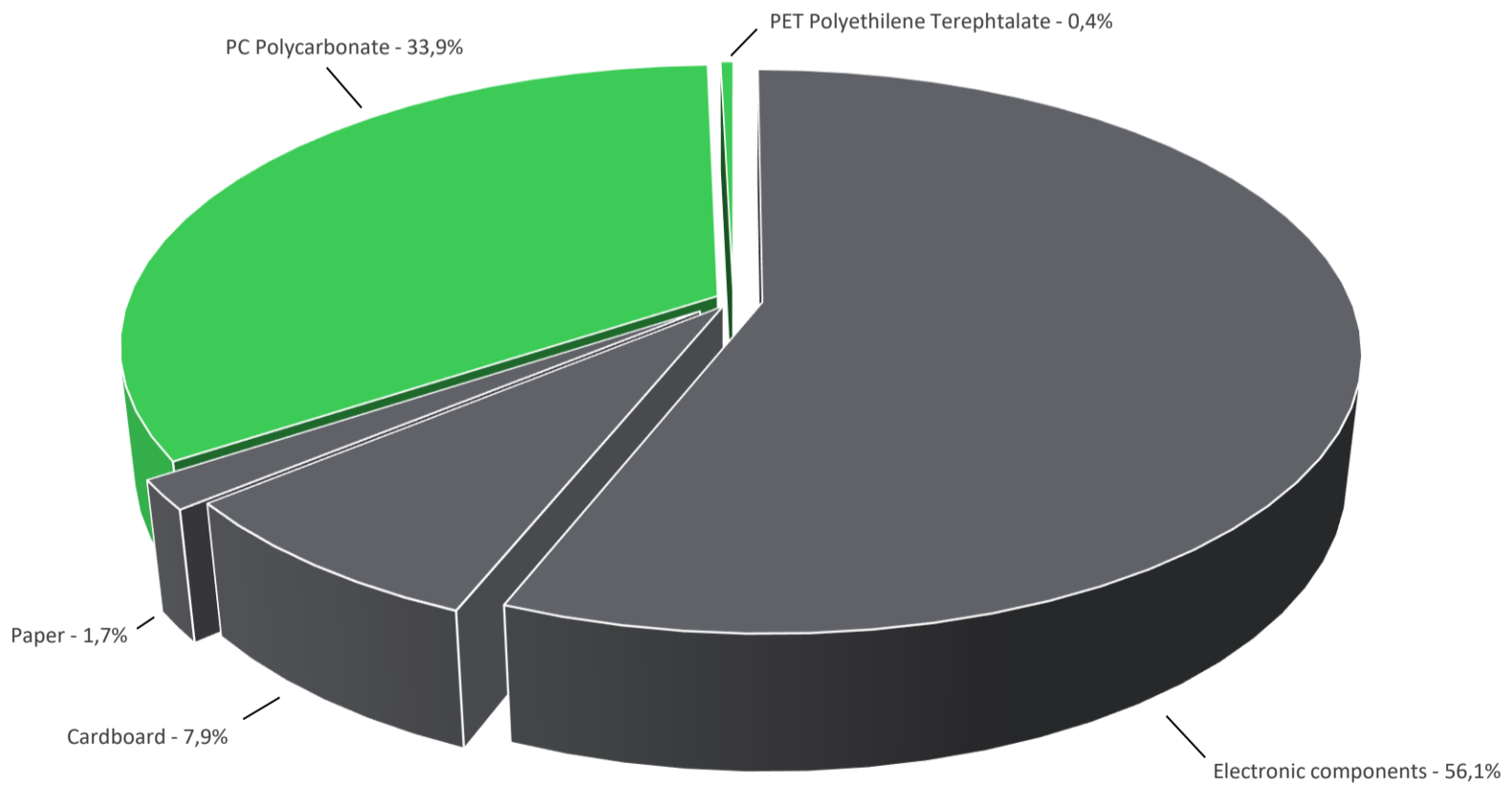
## General information

Reference product	SpaceLogic MP-C-36A Controller - SXWMPC36A10001
Description of the product	<p>The SpaceLogic MP-C Controller is a multi-purpose, fully programmable and IP based field controller with a flexibility that is ideally suited for plant room HVAC control and a wide range of HVAC applications. It can operate as stand-alone controller or be a part of the EcoStruxure Building Management System.</p> <p>(This document describes the different stages of the product, from manufacturing to its end of life, for example the manufacturing stage includes the production and transportation of the product and its packaging through the entire process and to the last logistics platform. This product is assembled in Timisoara, Romania and distributed globally. For its end of life optimization, any dismantling or separation of parts required is carried out as mentioned in the document and in accordance with EU regulations, viz. WEEE.)</p>
Description of the range	Single product
Functional unit	Other switchgear and controlgear solutions mentioned in the scope (e.g. fuses TC32, all-or-nothing relays TC94, Measuring relays and protection equipment TC95), apply the general rules of PCR and mention in the accompanying report the functional unit, the reference product characteristics, the reference lifetime and the use scenario which are applied consistently with the relevant IEC technical standards.
Specifications are:	The SpaceLogic MP-C Controller, as part of the building management system or as a stand-alone, operates ideally in a plant room regulating the applications of an HVAC system. During its reference service lifetime of 10 years, the controller is in active mode 100% of the time with a typical power consumption of 11W.



## Constituent materials

Reference product mass	605,9 g including the product, its packaging and additional elements and accessories
------------------------	--



Plastics	34,3%
Others	65,7%



## Substance assessment

Details of ROHS and REACH substances information are available on the Schneider-Electric Green Premium website

<https://www.se.com/ww/en/work/support/green-premium/>

## Additional environmental information

End Of Life	Recyclability potential:	0%	The recyclability rate was calculated from the recycling rates of each material making up the product based on REEECY'LAB tool developed by Ecosystem, for components/materials not covered by the tool, data from the EIME database, the ESR database and the related PSR was taken. If no data was found a conservative assumption was used (0% recyclability).
-------------	--------------------------	----	---

## Environmental impacts

Reference service life time	10 years			
Product category	Other equipments - Active product			
Installation elements	This product does not require any installation operations			
Use scenario	See PSR			
Time representativeness	The collected data are representative of the year 2024			
Technological representativeness	The Modules of Technologies such as material production, manufacturing processes and transport technology used in the PEP analysis (LCA EIME in the case) are Similar and representative of the actual type of technologies used to make the product.			
Geographical representativeness	Rest of the World			
Energy model used	[A1 - A3]	[A5]	[B6]	[C1 - C4]
	Electricity Mix; High voltage; 2018; Latvia, LV	Electricity Mix; Low voltage; 2018; United States, US Electricity Mix; Low voltage; 2018; Egypt, EG Electricity Mix; Low voltage; 2018; Europe, EU-27 Electricity Mix; High voltage; 2018; India, IN Asia Pacific, APAC	Electricity Mix; Low voltage; 2018; United States, US Electricity Mix; Low voltage; 2018; Egypt, EG Electricity Mix; Low voltage; 2018; Europe, EU-27 Electricity Mix; High voltage; 2018; India, IN Asia Pacific, APAC	Electricity Mix; Low voltage; 2018; United States, US Electricity Mix; Low voltage; 2018; Egypt, EG Electricity Mix; Low voltage; 2018; Europe, EU-27 Electricity Mix; High voltage; 2018; India, IN Asia Pacific, APAC

Detailed results of the optional indicators mentioned in PCRd4 are available in the LCA report and on demand in a digital format - Country Customer Care Center - <http://www.schneider-electric.com/contact>

Mandatory Indicators		SpaceLogic MP-C-36A Controller - SXWMPC36A10001						
Impact indicators	Unit	Total (without Module D)	[A1 - A3] - Manufacturing	[A4] - Distribution	[A5] - Installation	[B1 - B7] - Use	[C1 - C4] - End of life	[D] - Benefits and loads
Contribution to climate change	kg CO2 eq	6,36E+02	2,99E+01	7,33E-02	0*	6,05E+02	1,69E+00	0,00E+00
Contribution to climate change-fossil	kg CO2 eq	6,36E+02	2,98E+01	7,33E-02	0*	6,04E+02	1,69E+00	0,00E+00
Contribution to climate change-biogenic	kg CO2 eq	6,72E-01	9,42E-02	0*	3,70E-04	5,78E-01	0*	0,00E+00
Contribution to climate change-land use and land use change	kg CO2 eq	2,29E-04	2,29E-04	0*	0*	0*	0*	0,00E+00
Contribution to ozone depletion	kg CFC-11 eq	6,47E-06	3,91E-06	0*	0*	2,56E-06	1,45E-09	0,00E+00
Contribution to acidification	mol H+ eq	3,57E+00	2,15E-01	4,64E-04	0*	3,36E+00	1,12E-03	0,00E+00
Contribution to eutrophication, freshwater	kg (PO4) <sup>3-</sup> eq	7,47E-04	8,23E-05	0*	0*	6,56E-04	8,09E-06	0,00E+00
Contribution to eutrophication marine	kg N eq	4,15E-01	2,33E-02	2,17E-04	0*	3,91E-01	5,48E-04	0,00E+00
Contribution to eutrophication, terrestrial	mol N eq	4,90E+00	2,51E-01	2,39E-03	0*	4,64E+00	5,65E-03	0,00E+00
Contribution to photochemical ozone formation - human health	kg COVNM eq	1,38E+00	8,36E-02	6,02E-04	0*	1,29E+00	1,37E-03	0,00E+00
Contribution to resource use, minerals and metals	kg Sb eq	8,28E-03	8,26E-03	0*	0*	2,07E-05	0*	0,00E+00
Contribution to resource use, fossils	MJ	1,22E+04	4,17E+02	0*	0*	1,18E+04	2,03E+00	0,00E+00
Contribution to water use	m3 eq	3,86E+01	1,68E+01	0*	5,42E-03	2,17E+01	6,22E-02	0,00E+00

Inventory flows Indicators		SpaceLogic MP-C-36A Controller - SXWMPC36A10001						
Inventory flows	Unit	Total (without Module D)	[A1 - A3] - Manufacturing	[A4] - Distribution	[A5] - Installation	[B1 - B7] - Use	[C1 - C4] - End of life	[D] - Benefits and loads
Contribution to use of renewable primary energy excluding renewable primary energy used as raw material	MJ	1,36E+03	1,37E+01	0*	0*	1,35E+03	0*	0,00E+00
Contribution to use of renewable primary energy resources used as raw material	MJ	1,19E+00	1,19E+00	0*	0*	0*	0*	0,00E+00
Contribution to total use of renewable primary energy resources	MJ	1,36E+03	1,49E+01	0*	0*	1,35E+03	0*	0,00E+00
Contribution to use of non renewable primary energy excluding non renewable primary energy used as raw material	MJ	1,22E+04	4,06E+02	0*	0*	1,18E+04	2,03E+00	0,00E+00
Contribution to use of non renewable primary energy resources used as raw material	MJ	1,17E+01	1,17E+01	0*	0*	0*	0*	0,00E+00
Contribution to total use of non-renewable primary energy resources	MJ	1,22E+04	4,17E+02	0*	0*	1,18E+04	2,03E+00	0,00E+00
Contribution to use of secondary material	kg	1,88E-05	1,88E-05	0*	0*	0*	0*	0,00E+00
Contribution to use of renewable secondary fuels	MJ	0,00E+00	0*	0*	0*	0*	0*	0,00E+00
Contribution to use of non renewable secondary fuels	MJ	0,00E+00	0*	0*	0*	0*	0*	0,00E+00
Contribution to net use of freshwater	m³	9,00E-01	3,93E-01	0*	1,26E-04	5,05E-01	1,45E-03	0,00E+00
Contribution to hazardous waste disposed	kg	1,44E+02	1,31E+02	0*	0*	1,22E+01	3,46E-01	0,00E+00
Contribution to non hazardous waste disposed	kg	9,74E+01	7,65E+00	0*	5,90E-02	8,94E+01	2,34E-01	0,00E+00
Contribution to radioactive waste disposed	kg	1,90E-02	3,37E-03	0*	0*	1,56E-02	1,17E-05	0,00E+00
Contribution to components for reuse	kg	0,00E+00	0*	0*	0*	0*	0*	0,00E+00
Contribution to materials for recycling	kg	5,37E-03	5,37E-03	0*	0*	0*	0*	0,00E+00
Contribution to materials for energy recovery	kg	2,06E-08	2,06E-08	0*	0*	0*	0*	0,00E+00
Contribution to exported energy	MJ	1,09E-05	1,09E-05	0*	0*	0*	0*	0,00E+00

\* represents less than 0.01% of the total life cycle of the reference flow

Contribution to biogenic carbon content of the product	kg of C	0,00E+00
Contribution to biogenic carbon content of the associated packaging	kg of C	1,75E-02

\* The calculation of the biogenic carbon is based on the Ademe for the Cardboard (28%), EN16485 for Wood (39,52%), and APESA/RECORD for Paper (37,8%)

Mandatory Indicators		SpaceLogic MP-C-36A Controller - SXWMPC36A10001							
Impact indicators	Unit	[B1 - B7] - Use	[B1]	[B2]	[B3]	[B4]	[B5]	[B6]	[B7]
Contribution to climate change	kg CO2 eq	6,05E+02	0*	0*	0*	0*	0*	6,05E+02	0*
Contribution to climate change-fossil	kg CO2 eq	6,04E+02	0*	0*	0*	0*	0*	6,04E+02	0*
Contribution to climate change-biogenic	kg CO2 eq	5,78E-01	0*	0*	0*	0*	0*	5,78E-01	0*
Contribution to climate change-land use and land use change	kg CO2 eq	0*	0*	0*	0*	0*	0*	0*	0*
Contribution to ozone depletion	kg CFC-11 eq	2,56E-06	0*	0*	0*	0*	0*	2,56E-06	0*
Contribution to acidification	mol H+ eq	3,36E+00	0*	0*	0*	0*	0*	3,36E+00	0*
Contribution to eutrophication, freshwater	kg (PO4) <sup>3-</sup> eq	6,56E-04	0*	0*	0*	0*	0*	6,56E-04	0*
Contribution to eutrophication marine	kg N eq	3,91E-01	0*	0*	0*	0*	0*	3,91E-01	0*
Contribution to eutrophication, terrestrial	mol N eq	4,64E+00	0*	0*	0*	0*	0*	4,64E+00	0*
Contribution to photochemical ozone formation - human health	kg COVNM eq	1,29E+00	0*	0*	0*	0*	0*	1,29E+00	0*
Contribution to resource use, minerals and metals	kg Sb eq	2,07E-05	0*	0*	0*	0*	0*	2,07E-05	0*
Contribution to resource use, fossils	MJ	1,18E+04	0*	0*	0*	0*	0*	1,18E+04	0*
Contribution to water use	m3 eq	2,17E+01	0*	0*	0*	0*	0*	2,17E+01	0*

