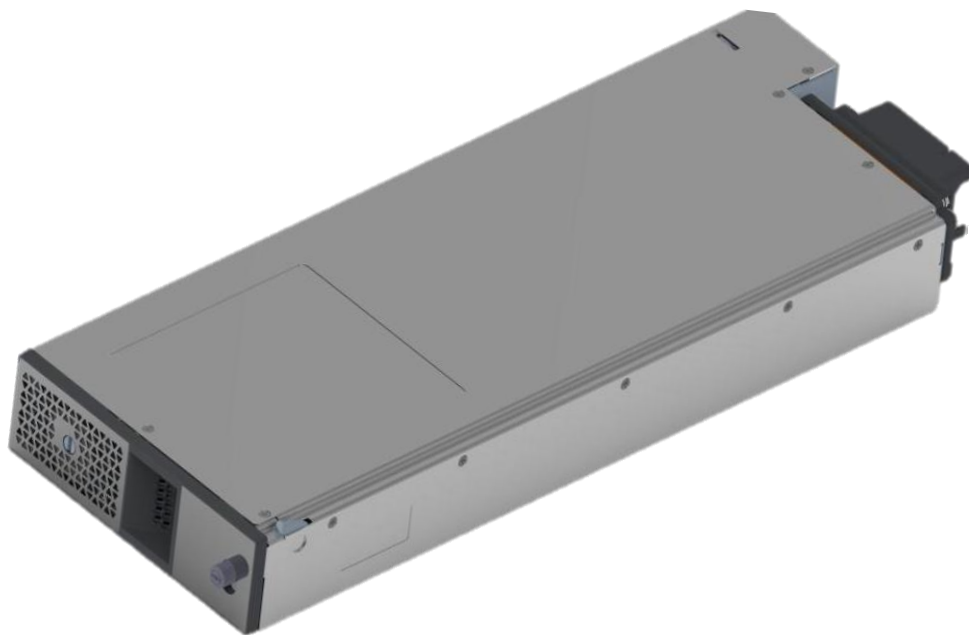


Product End of Life Instructions

APC Smart-UPS Ultra Lithium-ion Battery Module





Potential disassembly risks

⚠ WARNING

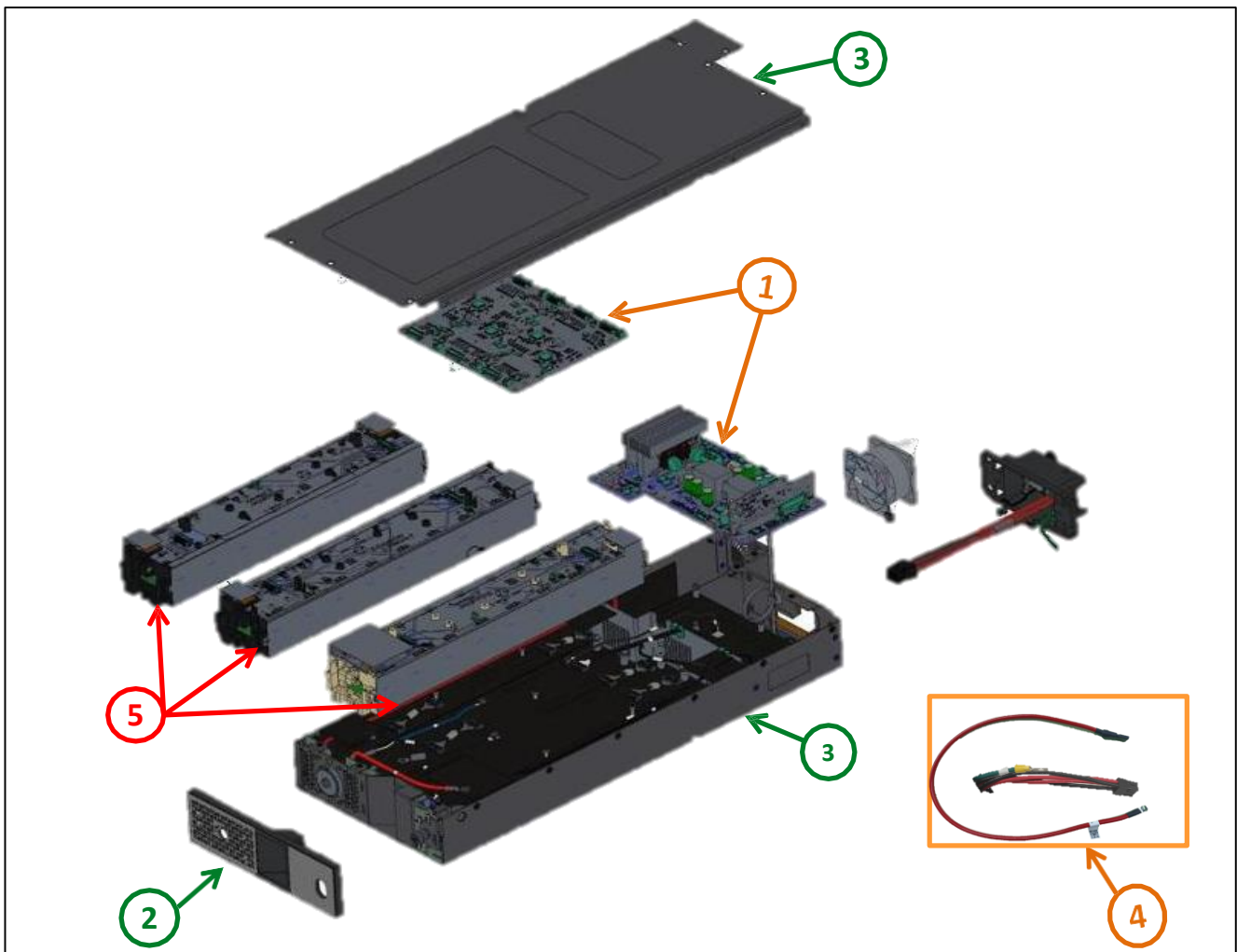
HAZARD OF ARC FLASH OR FIRE

- Disconnect battery terminals before disassembly
- Avoid any electrical connection between the terminals

Failure to follow these instructions can result in death or serious injury.



End of Life Instructions



Recommendation	Number on drawing	Component / Material	Weight (in g)	Comment
To be depolluted	1	Electronic Communication Board	293.0055	8 X PCBA > 10 cm2
To be depolluted	2	ABS with brominates flame retardants	61.35	Plastics with brominates flame
To be depolluted	3	Metal	3080	Cover and Chasis
To be depolluted	4	Cable	266.269	Cable (high current and optical fiber)
Potential hazards	5	Batteries	4500	Lithium-ion battery
To be depolluted	6	Others	1682.274	Heatsink and other eletronic

Product description

Manufacturer identification	Schneider Electric Industries SAS
Brand name	APC
Product function	This APC Smart-UPS Ultra Lithium-ion battery module is used along with Smart-UPS Ultra Uninterruptible Power Supply, which is designed for IT professionals or network administrators to maintain business uptime and continuity. This Smart-UPS offers cloud-based remote power monitoring, UPS firmware upgrades, remote diagnostics and proactive email notifications with recommended actions. The UPS can connect to EcoStruxure IT or third-party centralized management platforms
Product reference	SRYLBM
Total representative product mass	10200 g
Representative product dimensions	593mmx212mmx63mm
Accessories	No special accessories required
Date of information release	05-02-2026



Additional information

Legal information	This product family is in the scope of European Union directive 2012/19/EU on Waste Electrical and Electronic Equipment (WEEE). The product family must be disposed according to the legislation of the country. This document is intended for use by end of life recyclers or treatment facilities. It provides the basic information to assure an appropriate end of life treatment for the components and materials of the product.
In case of special transportation: transportation method	Not Applicable
Recyclability potential	62% The recyclability rate was calculated from the recycling rates of each material making up the product based on REEECY'LAB tool developed by Ecosystem, for components/materials not covered by the tool, data from the EIME database and the related PSR was taken. If no data was found a conservative assumption was used (0% recyclability).

Schneider Electric Industries SAS

Country Customer Care Center
<http://www.se.com/contact>

35, rue Joseph Monier

CS 30323

F- 92500 Rueil Malmaison Cedex

RCS Nanterre 954 503 439

Capital social 928 298 512 €

www.se.com

Published by Schneider Electric

ENVEOLI2602002EN_v1

© 2023 - Schneider Electric – All rights reserved

02-2026