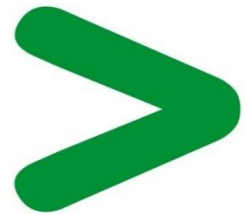


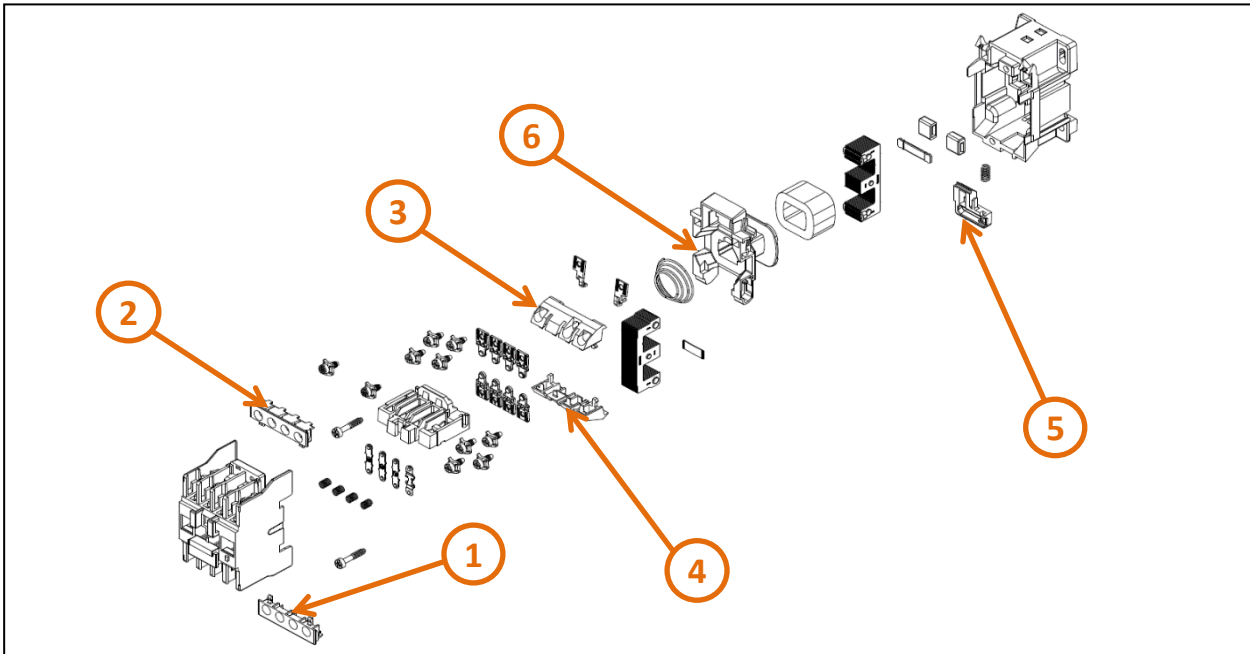
Product End of Life Instructions

Easy TeSys Control 3P 9A - Coil 220V 50/60Hz - 1NO

Easy TeSys Control



End of Life Instructions



Recommendation	Number on drawing	Component / Material	Weight (in g)	Comment
To be depolluted	1-5	PC, ABS-PC, PA, PA6, HDPE, SAN with brominated flame retardants	9.43	PC, ABS-PC, PA, PA6, HDPE, SAN with brominated flame retardants
To be depolluted	6	Other plastic parts with brominated flame retardants	13.17	Other plastic parts with brominated flame retardants

Product description

Manufacturer identification	Schneider Electric Industries SAS
Brand name	Schneider Electric
Product function	The main purpose of the product is to switch on and off electrical power supply of a downstream installation with an electrical and/or mechanical control.
Product reference	LC1E0910M7
Additional similar product references	Easy TeSys Control: LC1Exx...(xx = 06, 09, 12, 18, 25, 32, 38) CAExx...(xx = 22, 31, 40)
Total representative product mass	300 g
Representative product dimensions	50 mm x 77 mm x 88 mm
Accessories	No
Date of information release	11/11/2025

Additional information

Legal information	This product family is in the scope of European Union directive 2012/19/EU on Waste Electrical and Electronic Equipment (WEEE). The product family must be disposed according to the legislation of the country. This document is intended for use by end of life recyclers or treatment facilities. It provides the basic information to assure an appropriate end of life treatment for the components and materials of the product.
In case of special transportation: transportation method	No
Recyclability potential	15% The recyclability rate was calculated from the recycling rates of each material making up the product based on REEECYLAB tool developed by Ecosystem, for components/materials not covered by the tool, data from the EIME database and the related PSR was taken. If no data was found a conservative assumption was used (0% recyclability).

Schneider Electric Industries SAS
 Country Customer Care Center
<http://www.se.com/contact>
 35, rue Joseph Monier
 CS 30323
 F- 92500 Rueil Malmaison Cedex
 RCS Nanterre 954 503 439
 Capital social 928 298 512 €

www.se.com

ENVEOLI2510050_V1

Published by Schneider Electric

© 2023 - Schneider Electric – All rights reserved

11/11/2025