

Product End of Life Instructions

Variable speed drive, Altivar HVAC ATH600, ATH630, 2.2kW, 3hp, 380 to 480V, 3 phase, IP21, UL type 1

Altivar HVAC ATH600





Potential disassembly risks

The information provided in this document assumes that the product is completely de-energized and uninstalled (refer to the instructions provided in the appropriate product manuals).

Dismantling/disassembling the product may entail hazards caused by, for example, sharp edges, chemical aggression or ejected parts.

▲ WARNING

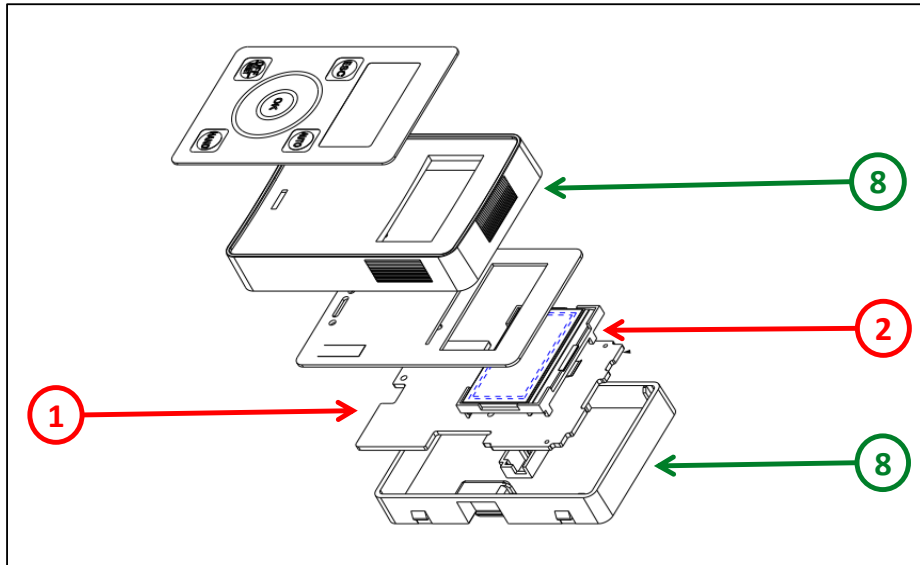
HAZARD DUE TO INSUFFICIENT PROTECTION

- Implement all safety measures required by the applicable regulations and by the processes used to dismantle/disassemble and dispose of the product.
- Use all necessary personal protective equipment such as gloves and goggles.

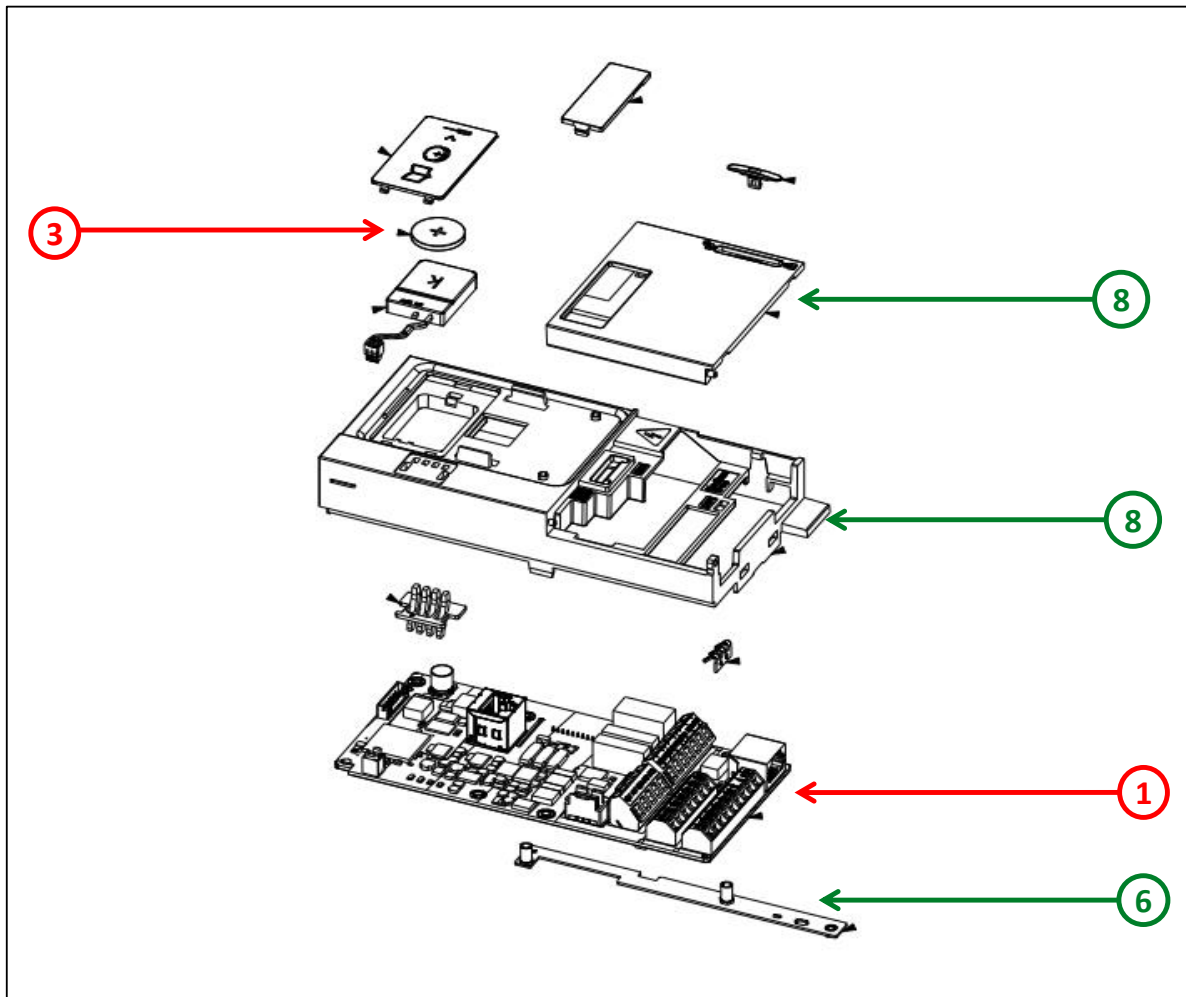
Failure to follow these instructions can result in death or serious injury.

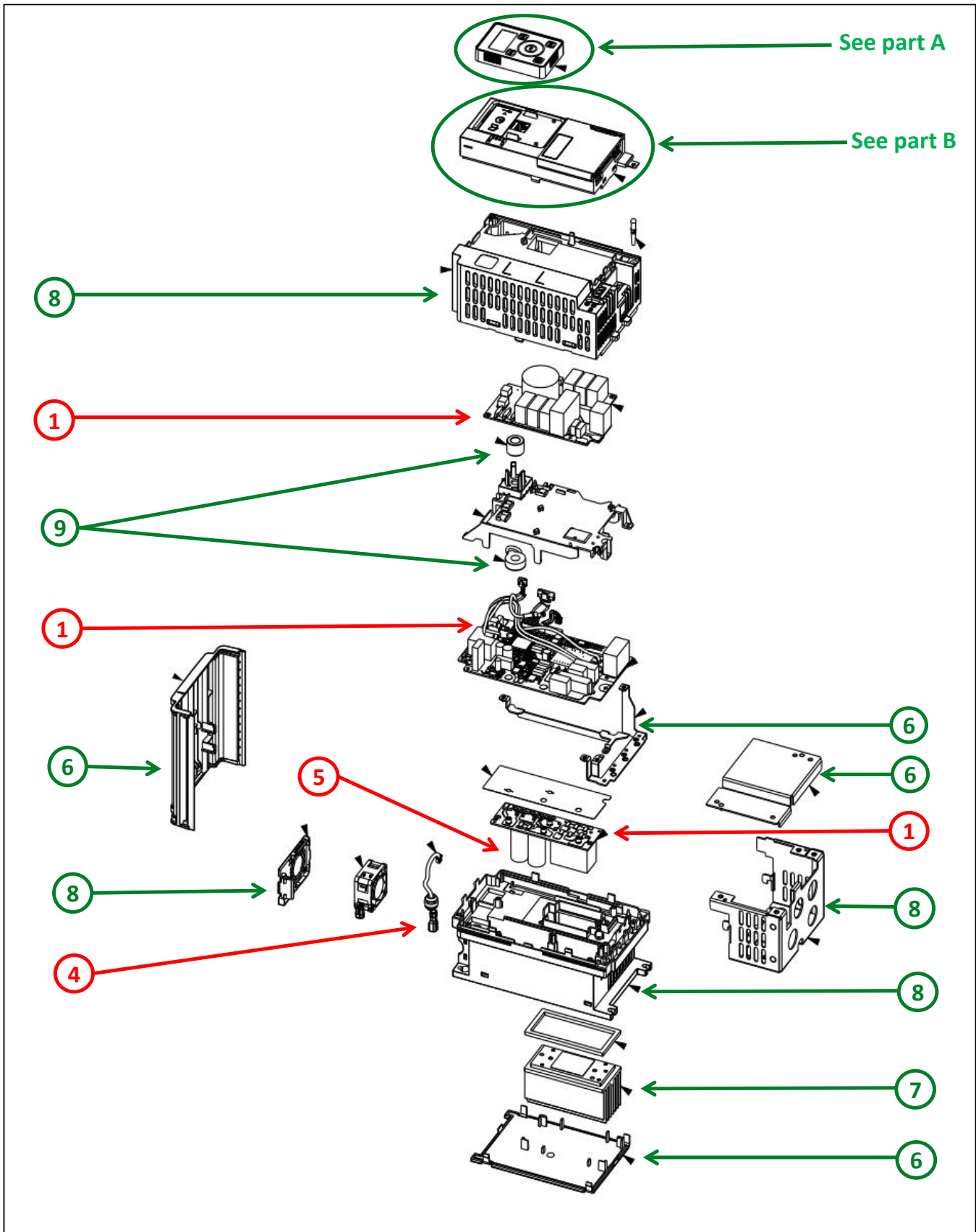
End of Life Instructions

Part A :



Part B :





Recommendation	Number on drawing	Component / Material	Weight (in g)	Comment
To be depolluted	1	Electronic Board (Power and Communication) > 10cm ²	531,2	
To be depolluted	2	LCD (surface > 100cm ²) and all those back-lighted with gas discharge lamps	7,0	
To be depolluted	3	Battery	2,9	
To be depolluted	4	Cable (high current)	75,9	
To be depolluted	5	Electrolyte capacitors which size: height > 25 mm, diameter > 25 mm or proportionately similar volume	36,0	
To be dismantled	6	Steel	639,9	Plates - Bar - Clamp
To be dismantled	7	Aluminium	219,0	Heatsink
To be dismantled	8	PC, ABS-PC, PA, PA6, HDPE, SAN with or without additive, PP+EPDM and PP	791,2	Housing - Support - Control Door - Wiring Trap - Wiring Cap - Chassis
To be dismantled	9	Ferrite	140,0	CBL Toroid
Other			56,8	

Product description

Manufacturer identification	Schneider Electric Industries SAS
Brand name	Schneider Electric
Product function	The main function of the Altivar HVAC ATH600 product range is the speed control including speed variation for synchronous and asynchronous motors to provide energy efficiency, durability, safety and cybersecurity for HVAC equipments. The products is available in different variants to be mounted in a control panel, on the machines or on the wall inside a building.
Product reference	ATH630U22N4
Description of the product range	This range, Altivar HVAC ATH600, consists of variable speed drive products designed for Original Equipment Manufacturers (OEMs), system integrators and contractors that meet pump, fan and compressor application requirements in HVAC equipments for 3 Phase synchronous and asynchronous motors from 0,75 to 2,2 kW (1 to 3 HP)
Total representative product mass	2500g
Representative product dimensions	134mm x 264mm x 197mm
Accessories	No accessories needed.
Date of information release	02-2026



Additional information

Legal information	This product family is in the scope of European Union directive 2012/19/EU on Waste Electrical and Electronic Equipment (WEEE). The product family must be disposed according to the legislation of the country. This document is intended for use by end of life recyclers or treatment facilities. It provides the basic information to assure an appropriate end of life treatment for the components and materials of the product.
In case of special transportation: transportation method	No special transportation.
Recyclability potential	74% The recyclability rate was calculated from the recycling rates of each material making up the product based on REEECY'LAB tool developed by Ecosystem, for components/materials not covered by the tool, data from the EIME database and the related PSR was taken. If no data was found a conservative assumption was used (0% recyclability).

Schneider Electric Industries SAS

Country Customer Care Center
<http://www.se.com/contact>

35, rue Joseph Monier
CS 30323
F- 92500 Rueil Malmaison Cedex
RCS Nanterre 954 503 439
Capital social 928 298 512 €

www.se.com

ENVEOLI2510020_V1

Published by Schneider Electric

© 2023 - Schneider Electric – All rights reserved

02-2026