

Product End of Life Instructions

Harmony XA2A Illuminated Pushbutton

Easy Harmony XA2



Potential disassembly risks

The information provided in this document assumes that the product is completely de-energized and uninstalled (refer to the instructions provided in the appropriate product manuals).

Dismantling/disassembling the product may entail hazards caused by, for example, sharp edges, chemical aggression or ejected parts.

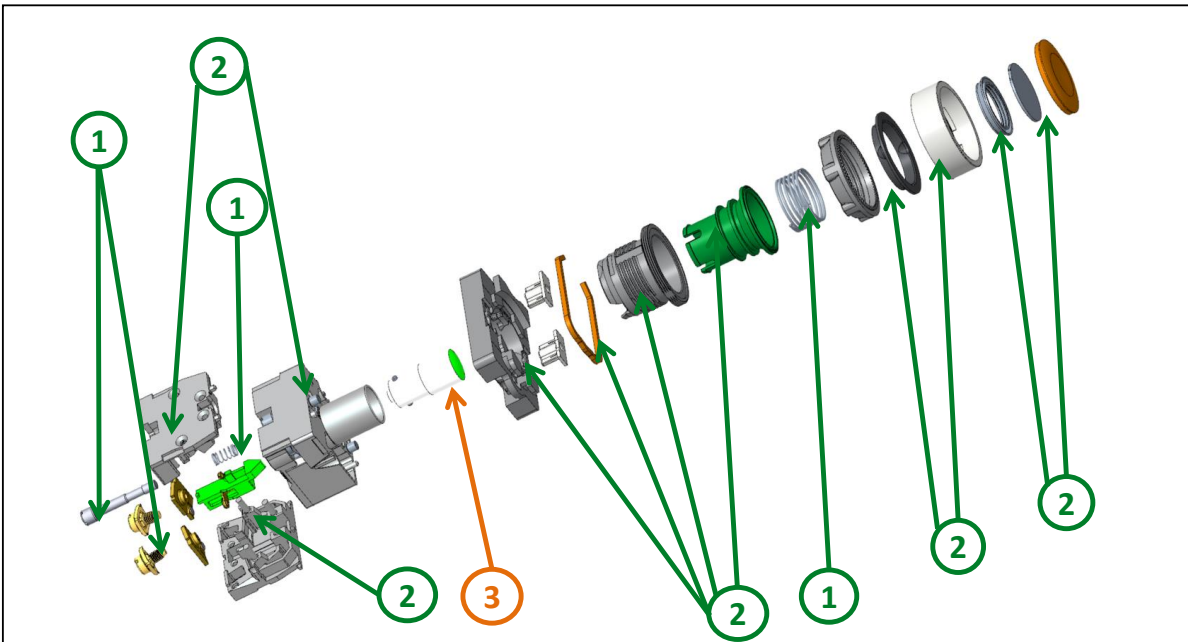
WARNING

HAZARD DUE TO INSUFFICIENT PROTECTION

- Implement all safety measures required by the applicable regulations and by the processes used to dismantle/disassemble and dispose of the product.
- Use all necessary personal protective equipment such as gloves and goggles.

Failure to follow these instructions can result in death or serious injury.

End of Life Instructions



Recommendation	Number on drawing	Component / Material	Weight (in g)	Comment
To be dismantled	1	Scrow, Spring, Nut, Terminal	18	Metal Parts
To be dismantled	2	Head, Contact Cover, Housing, Bezel	32	Plastic Parts
To be depolluted	3	LED	0.5	Electronic Component



Product description

Manufacturer identification	Schneider Electric Industries SAS
Brand name	Schneider Electric
Product function	Illuminated push buttons offer significantly enhanced visibility for locating the switch or indicating its current status. They combine ease of installation, flexibility, and robustness, meeting the requirements of most industrial applications.
Product reference	XA2AW33B1
Additional similar product references	XA2AW31B1 XA2AW31M1 XA2AW31Q1 XA2AW33M1 XA2AW34B1 XA2AW34B2 XA2AW34M1 XA2AW34M2 XA2AW34Q2 XA2AW35B1 XA2AW35M1 XA2AW36B1 XA2AW36M1
Total representative product mass	50.5 g
Representative product dimensions	42.7mm x 29.9mm x 73.4mm
Accessories	No
Date of information release	2025/03



Additional information

Legal information	This product family is in the scope of European Union directive 2012/19/EU on Waste Electrical and Electronic Equipment (WEEE). The product family must be disposed according to the legislation of the country. This document is intended for use by end of life recyclers or treatment facilities. It provides the basic information to assure an appropriate end of life treatment for the components and materials of the product.
In case of special transportation: transportation method	No
Recyclability potential	35% The recyclability rate was calculated from the recycling rates of each material making up the product based on REEECY'LAB tool developed by Ecosystem, for components/materials not covered by the tool, data from the EIME database and the related PSR was taken. If no data was found a conservative assumption was used (0% recyclability).

Schneider Electric Industries SAS

Country Customer Care Center
<http://www.se.com/contact>

35, rue Joseph Monier
CS 30323
F- 92500 Rueil Malmaison Cedex
RCS Nanterre 954 503 439
Capital social 928 298 512 €

www.se.com

ENVEOLI2412048_V1

Published by Schneider Electric

© 2023 - Schneider Electric – All rights reserved

03-2025