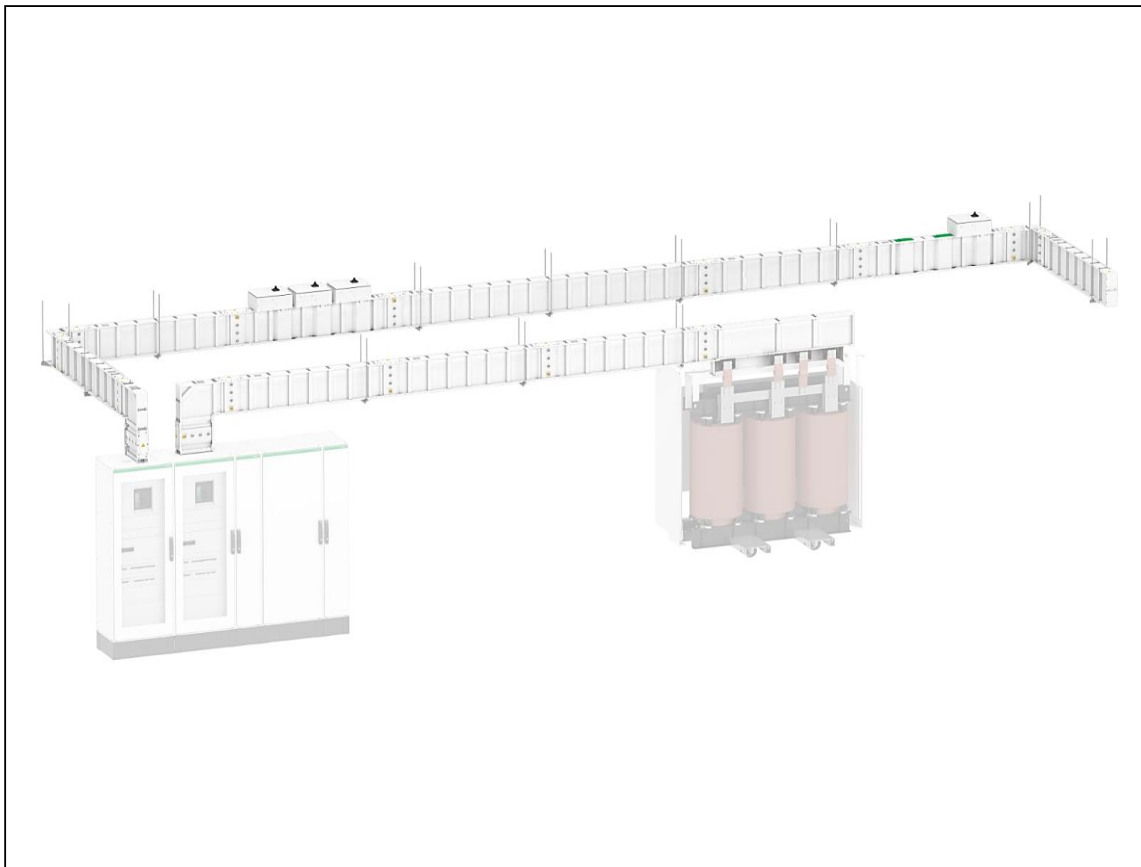


Product End of Life Instructions

Canalis KTC 1000 to 6300A





Potential disassembly risks

This product contains components made of Bromide materials which are recommended to be treated separately during the End of Life operations.

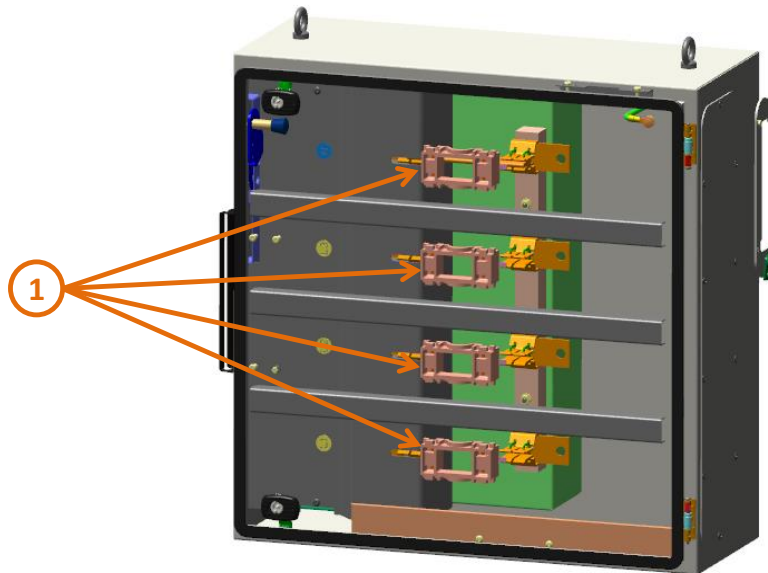
The components of the product that optimize the recycling performances are listed, identified and located hereunder.

There are several steps to process the products at the end of life so as to recover components, materials or energy :

Reuse --> Depollution --> Dismantling --> Shredding



End of Life Instructions



Recommendation	Number on drawing	Component / Material	Weight (in g)	Comment
To be depolluted	1	Plastic parts with Brominated Flame Retardants (PBT GF30 FR(17) GREY)	72.2g	Fuse Holder Base
To be depolluted		Liquid and Pasty Substances	260g	Glue & Grease for full Configuration
To be depolluted		Cable (Low Current)	0.1g / mm	905 g used in the Configuration



Product description

Manufacturer identification	Schneider Electric Industries SAS
Brand name	Schneider Electric
Product function	<ul style="list-style-type: none"> • Canalis is part of a comprehensive offering of Schneider Electric products designed to operate together. This concept covers all low and medium voltage electrical distribution components. • The result is an optimised electrical installation with even higher performance through full electrical, mechanical and communication compatibility. • With the Canalis, we get complete type tested distribution solution that complies with IEC61439-1 & IEC 61439-6. • It is perfectly suited to traditional applications (factories, warehouses, etc.) and to the distribution of electrical power from transformer to all types of loads in offices, commercial premises, laboratories, etc.
Product reference	The representative product used for the analysis is the typical product, Canalis KTC 3200A with its PIU - Plug in Unit KSB400SE4 which contains component made of Bromide material which are recommended to be treated separately during the End of Life operations.
Additional similar product references	The End of Life Instruction (EOLI) covers the configuration of Canalis KTC 1000A to 6300A
Total representative product mass	6191955 g & PIU - Plug in Unit KSB400SE4 is 25 kg
Representative product dimensions	600 X 600 X 366 (PIU - Plug in Unit)
Accessories	No
Date of information release	05/2024



Additional information

Legal information	This product family is in the scope of European Union directive 2012/19/EU on Waste Electrical and Electronic Equipment (WEEE). The product family must be disposed according to the legislation of the country. This document is intended for use by end of life recyclers or treatment facilities. It provides the basic information to assure an appropriate end of life treatment for the components and materials of the product.	
In case of special transportation: transportation method	No	
Recyclability potential	97%	Recyclability rate has been calculated based on REEECY'LAB tool developed by Ecosystem, for components/materials not covered by the tool, data from the "ECO'DEEEE recyclability and recoverability calculation method" was taken. If no data was found a conservative assumption was used (0% recyclability).

Schneider Electric Industries SAS
Country Customer Care Center
<http://www.se.com/contact>
35, rue Joseph Monier
CS 30323
F- 92500 Rueil Malmaison Cedex
RCS Nanterre 954 503 439
Capital social 928 298 512 €

www.se.com

ENVEOLI2404012_V1

Published by Schneider Electric

© 2023 - Schneider Electric – All rights reserved

05/2024