

# Product End of Life Instructions

## Harmony XA2 Illuminated Pushbutton



## Potential disassembly risks

The information provided in this document assumes that the product is completely de-energized and uninstalled (refer to the instructions provided in the appropriate product manuals).

Dismantling/disassembling the product may entail hazards caused by, for example, sharp edges, chemical aggression or ejected parts.

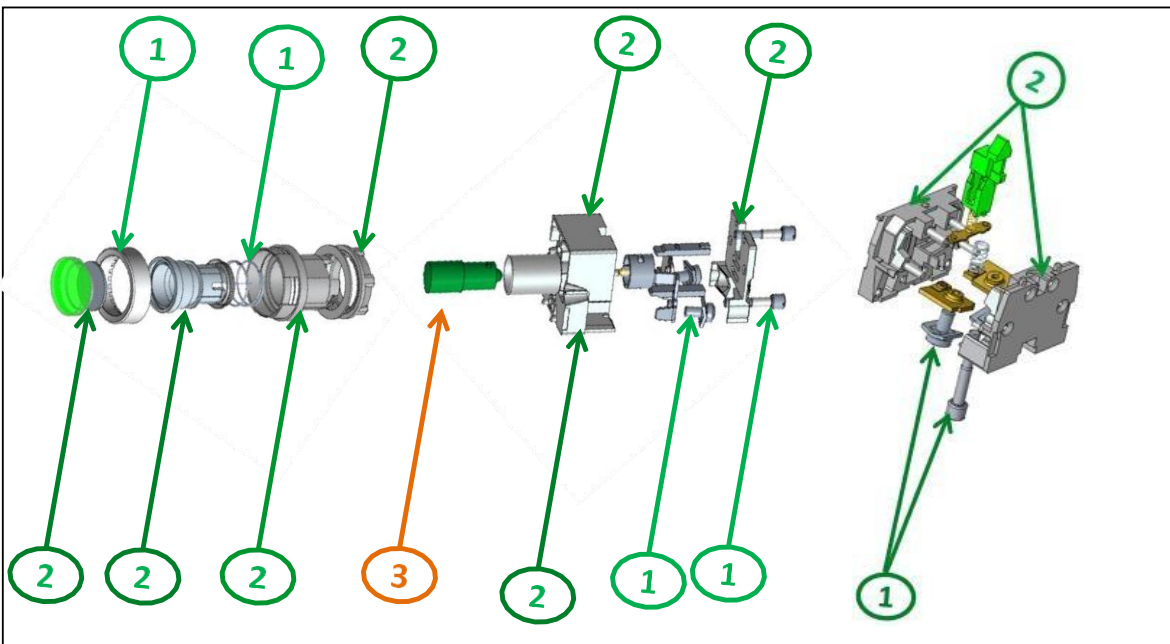
### WARNING

#### HAZARD DUE TO INSUFFICIENT PROTECTION

- Implement all safety measures required by the applicable regulations and by the processes used to dismantle/disassemble and dispose of the product.
- Use all necessary personal protective equipment such as gloves and goggles.

**Failure to follow these instructions can result in death or serious injury.**

## End of Life Instructions



Recommendation	Number on drawing	Component / Material	Weight (in g)	Comment
To be dismantled	1	Scew, Spring, Nut, Terminal	19.63	Metal Parts
To be dismantled	2	Head, Contact Cover, Housing, Bezel	33.4	Plastic Parts
To be depolluted	3	LED	2.1	Electronic Component

## Product description

Manufacturer identification	Schneider Electric Industries SAS
Brand name	Schneider Electric
Product function	Illuminated push buttons provide a much higher level of visibility for the switch location or as an indication of its current status. It combines simplicity of installation, flexibility and robustness and meets the requirements of the majority of industrial applications.
Product reference	XA2EW33B1
Additional similar product references	XA2EW33M1 XA2EW31Q1 XA2EW31M1 XA2EW34B2 XA2EW34Q2 XA2EW36M1 XA2EW35M1 XA2EW36B1 XA2EW35B1 XA2EW34B1 XA2EW33B1 XA2EW34M1 XA2EW31B1 XA2EW34M2 ZA2BW13 ZA2BW14 ZA2BW31 ZA2BW33 ZA2BW34 ZA2BW35 ZA2BW36 ZA2BW37 ZA2BW74 ZA2BW011 ZA2BW012 ZA2BW013 ZA2BW014 ZA2BW015 ZA2BW0153 ZA2BW021 ZA2BW031 ZA2BW032 XA2EW7L3741M5 XA2EW7L3741B5
Total representative product mass	56 g
Representative product dimensions	H42 mm x L74.5 mm x D30 mm
Accessories	No accessories needed
Date of information release	10/2023

## Additional information

Legal information	This product family is in the scope of European Union directive 2012/19/EU on Waste Electrical and Electronic Equipment (WEEE). The product family must be disposed according to the legislation of the country. This document is intended for use by end of life recyclers or treatment facilities. It provides the basic information to assure an appropriate end of life treatment for the components and materials of the product.
In case of special transportation: transportation method	No special transportation is needed
Recyclability potential	<b>35%</b> Recyclability rate has been calculated based on REEECY'LAB tool developed by Ecosystem, for components/materials not covered by the tool, data from the "ECO'DEEEE recyclability and recoverability calculation method" was taken. If no data was found a conservative assumption was used (0% recyclability).

Schneider Electric Industries SAS  
Country Customer Care Center  
<http://www.schneider-electric.com/contact>  
35, rue Joseph Monier  
CS 30323  
F- 92500 Rueil Malmaison Cedex  
RCS Nanterre 954 503 439  
Capital social 896 313 776 €

[www.se.com](http://www.se.com)

ENVEOLI2308020\_V1

Published by Schneider Electric

© 2023 - Schneider Electric – All rights reserved

10/2023