

Product End of Life Instructions

MODBUS INTERNAL COM MODULE



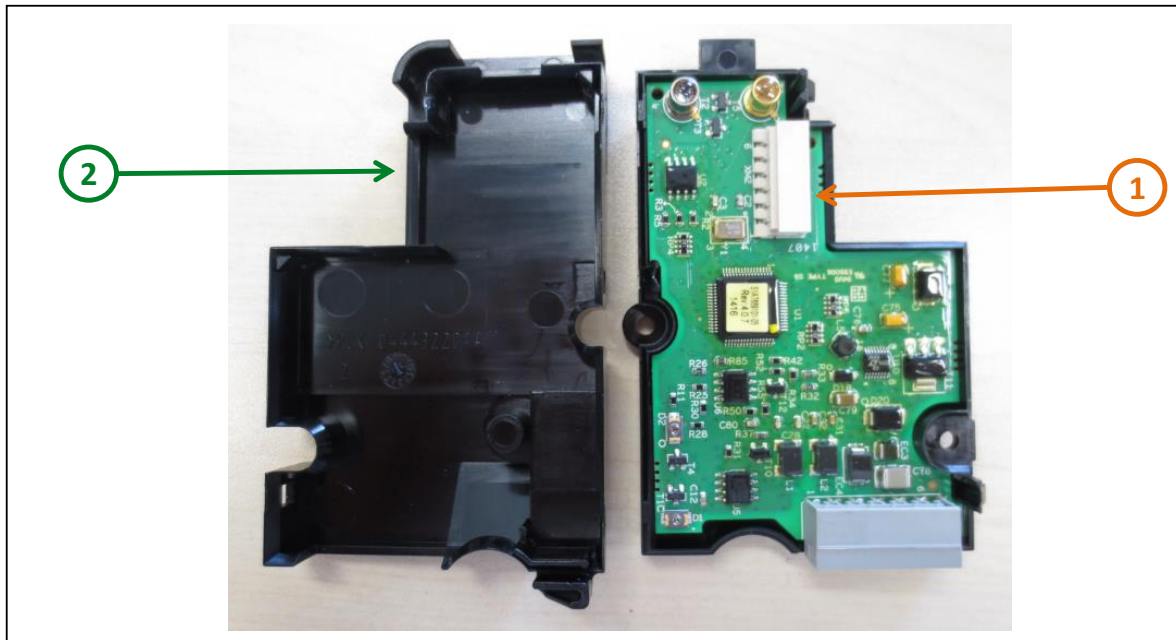
Potential disassembly risks

DANGER

HAZARD OF ELECTRIC SHOCK, EXPLOSION OR ARC FLASH

- Apply appropriate personal protective equipment (PPE) and follow safe electrical work practices. See NFPA 70E, CSA Z462 or local equivalent.
- This equipment must only be installed and serviced by qualified electrical personnel.
- Turn off all power supplying this equipment before working on or inside equipment. Lock the switchgear in the isolated position.
- Always use a properly rated voltage sensing device to confirm power is off.
- Install safety barriers and display a danger sign.
- Replace all devices, doors, and covers before turning on power to this equipment. Failure to follow these instructions will result in death or serious injury.

End of Life Instructions



Recommendation	Number on drawing	Component / Material	Weight (in g)	Comment
To be depolluted	1	Electronic Board (Communication) > 10cm ²	21.33 g	VEGA PCBA
To be dismantled	2	Plastic parts to be dismantled	19.33 g	PC, PA 6, EPDM



Product description

Manufacturer identification	Schneider Electric Industries SAS
Brand name	Schneider Electric
Product function	<p>The BCM ULP circuit breaker communication module is independent of the trip unit, and it communicates two-way with the modbus network. BCM ULP module is installed behind the MicroLogic trip unit for MasterPact NT/NW, ComPact NS, and PowerPact P- and R-frame circuit breakers and is wired to the microswitches:</p> <ul style="list-style-type: none"> • For manually operated devices: 1.OF, SDE, and SD contacts • For electrically operated devices: 1.OF, SDE, PF, and CH contacts 2.Connection kit to the MX1 and XF communicating voltage releases <p>The representative product used for the analysis is MODBUS INTERNAL COM MODULE (ref. 33106) and Breaker ULP cord L=1.3m (ref. LV434196).</p>
Product reference	33106, LV434196
Total representative product mass	69.4 g
Representative product dimensions	87.2 mm x 56.4 mm x 18 mm
Accessories	MODBUS INTERNAL COM MODULE is connected to the ULP devices via the MEDIUM BREAKER ULP CORD. Ulp cord available in three lengths 0.35 m (LV434195), 1.3 m (LV434196), and 3 m (LV434197), 33119 - Terminal Block
Date of information release	11/2023



Additional information

Legal information	This product family is in the scope of European Union directive 2012/19/EU on Waste Electrical and Electronic Equipment (WEEE). The product family must be disposed according to the legislation of the country. This document is intended for use by end of life recyclers or treatment facilities. It provides the basic information to assure an appropriate end of life treatment for the components and materials of the product.	
In case of special transportation: transportation method	NO	
Recyclability potential	4%	Recyclability rate has been calculated based on REEECY'LAB tool developed by Ecosystem, for components/materials not covered by the tool, data from the "ECO'DEEEE recyclability and recoverability calculation method" was taken. If no data was found a conservative assumption was used (0% recyclability).

Schneider Electric Industries SAS
Country Customer Care Center
<http://www.schneider-electric.com/contact>
35, rue Joseph Monier
CS 30323
F- 92500 Rueil Malmaison Cedex
RCS Nanterre 954 503 439
Capital social 896 313 776 €
www.se.com

Published by Schneider Electric