

Product End of Life Instructions

Lexium BCH18 Servo Motor 400W

Servo systems





Introduction and Scope

Legal Information	This product family is in the scope of European Union directive 2012/19/EU on Waste Electrical and Electronic Equipment (WEEE). This product may only be dismantled/disassembled and disposed of by appropriately trained persons and in compliance with all applicable regulations.	
Purpose	This document is intended for use by professional end of life recyclers or waste treatment facilities. It provides the basic information for proper end-of-life treatment of product components and materials.	
In case of special transportation: transportation method	No special transportation.	
Recyclability potential	82%	Based on "ECO'DEEE recyclability and recoverability calculation method" (version V1, 20 Sep. 2008 presented to the French Agency for Environment and Energy Management: ADEME).



Safety Information

The information provided in this document assumes that the product is completely de-energized and uninstalled (refer to the instructions provided in the appropriate product manuals).

Dismantling/disassembling the product may entail hazards caused by, for example, sharp edges, chemical aggression or ejected parts.

▲ WARNING

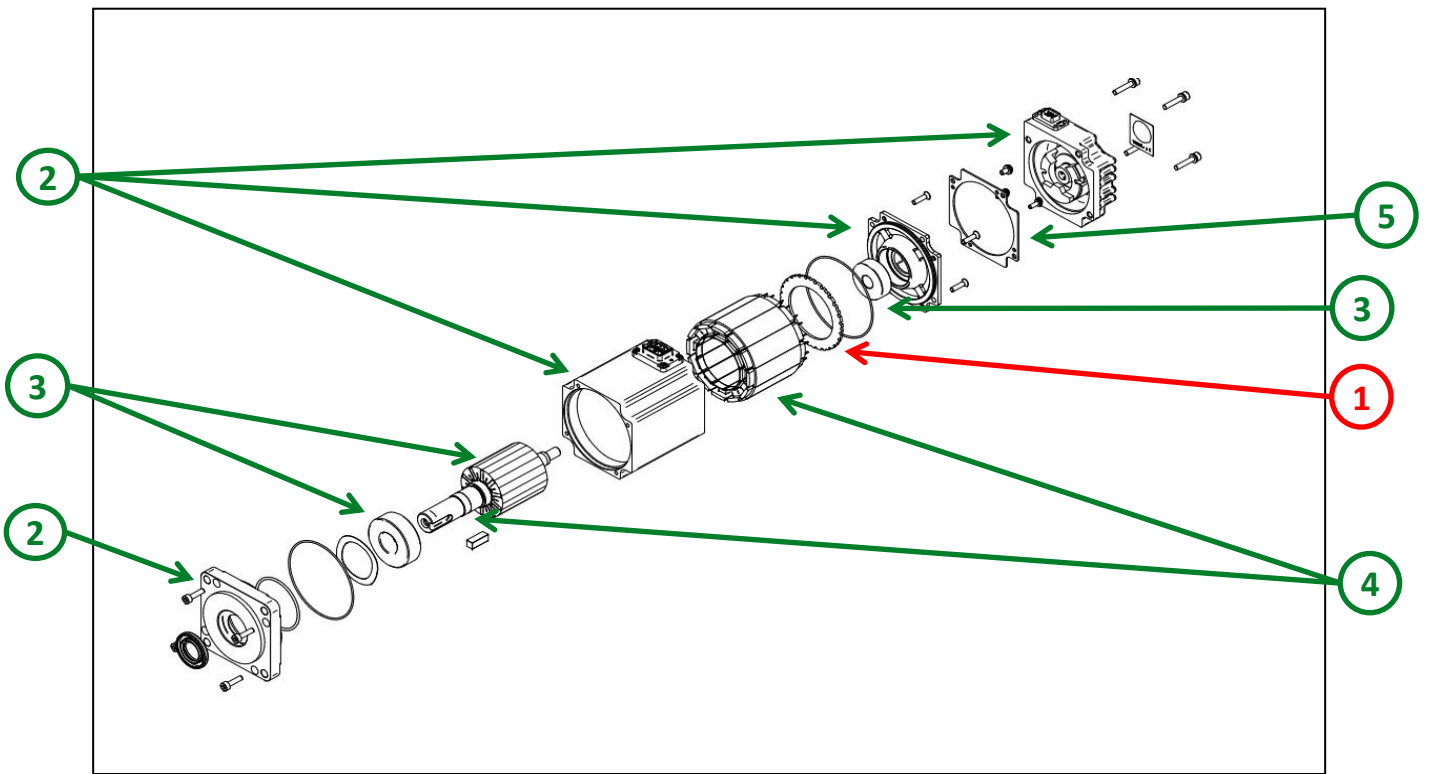
HAZARD DUE TO INSUFFICIENT PROTECTION

- Implement all safety measures required by the applicable regulations and by the processes used to dismantle/disassemble and dispose of the product.
- Use all necessary personal protective equipment such as gloves and goggles.

Failure to follow these instructions can result in death or serious injury.



End of Life Instructions



Recommendation	Number on drawing	Component / Material	Weight (in g)	Comment
To be depolluted	1	Electronic Board (Communication) > 10cm ²	34.25	PCBA
To be dismantled	2	Aluminum	289	Framework, Bracket
To be dismantled	3	Steel	568.5	Bearing
To be dismantled	4	Metal alloys	97	Magnetic steel
To be dismantled	5	Other Polymer	100	Epoxy resin
Other		Others	71.25	Except the above parts



Product description

Manufacturer identification	Schneider Electric Industries SAS
Brand name	Schneider Electric
Product function	The main purpose of the BCH18 servo motor is together with Lexium18 drive as well as a comprehensive portfolio of options and accessories to achieve a high performance drive solution.
Product reference	BCH18MD04332A5C
Additional similar product references	BCH18LB01332A5C BCH18LB01332F5C BCH18LBA5332A5C BCH18LBA5332F5C BCH18LD02332A5C BCH18LD02332F5C BCH18LD04332A5C BCH18LD04332F5C BCH18LF07332A5C BCH18LF07332F5C BCH18LF10332A5C BCH18LF10332F5C BCH18LH10332A6C BCH18LH10332F6C BCH18LH15332A6C BCH18LH15332F6C BCH18LH20332A6C BCH18LH20332F6C BCH18LM30332A6C BCH18LM30332F6C BCH18MB01332A5C BCH18MB01332F5C BCH18MBA5332A5C BCH18MBA5332F5C BCH18MD01332A5C BCH18MD01332F5C BCH18MD02332A5C BCH18MD02332F5C BCH18MD04332F5C BCH18MF02332A5C BCH18MF02332F5C BCH18MF04332A5C
Total representative product mass	1160 g
Representative product dimensions	60mm x 60mm x 126mm
Accessories	No
Date of information release	03/2023

Schneider Electric Industries SAS

Country Customer Care Center <http://www.se.com/contact>

35, rue Joseph Monier

CS 30323

FR- 92500 Rueil Malmaison Cedex

RCS Nanterre 954 503 439

Capital social 896 313 776 €

www.se.com

Published by Schneider Electric

ENVEOLI2301011_V1

© 2023 - Schneider Electric – All rights reserved

03/2023