

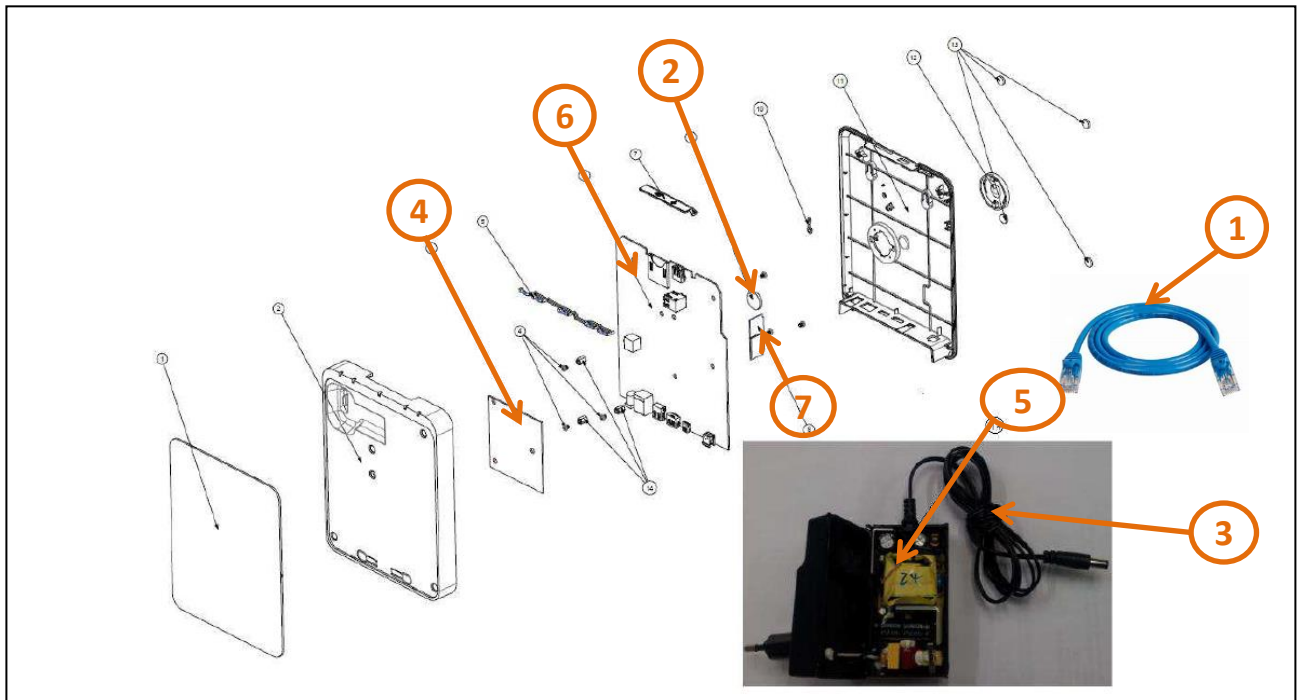
Product End of Life Instructions

SpaceLogic C-Bus Home Controller





End of Life Instructions



Recommendation	Number on drawing	Component / Material	Weight (in g)	Comment
To be depolluted	1	Cable (Optical)	61.9	CAT5E ethernet Cable
To be depolluted	2	Other battery	2.8	Battery CR2032
To be depolluted	3	External electric cable	23	Power adaptor Cable
To be depolluted	4	Electronic Board (Communication) > 10cm ²	31.2	Including all soldering parts
To be depolluted	5	Electronic Board (Communication) > 10cm ²	71	Including all soldering parts
To be depolluted	6	Electronic Board (Communication) > 10cm ²	177.3	Including all soldering parts
To be depolluted	7	Electronic Board (Communication) > 10cm ²	1.6	Including all soldering parts



Product description

Manufacturer identification	Schneider Electric Industries SAS
Brand name	Schneider Electric
Product function	Home Controller, interface unit for local and remote monitoring and control of electrical devices. Includes controller, power supply, battery, C-Bus connector plug and a network patch cord.
Product reference	5200WHC2
Total representative product mass	887 g
Representative product dimensions	220mm x 176mm x 34mm
Accessories	No
Date of information release	07/2022



Additional information

Legal information

This product family is in the scope of European Union directive 2012/19/EU on Waste Electrical and Electronic Equipment (WEEE). The product family must be disposed according to the legislation of the country. This document is intended for use by end of life recyclers or treatment facilities. It provides the basic information to assure an appropriate end of life treatment for the components and materials of the product.

Recyclability potential

7%

Based on "ECO'DEEE recyclability and recoverability calculation method" (version V1, 20 Sep. 2008 presented to the French Agency for Environment and Energy Management: ADEME).

Schneider Electric Industries SAS
Country Customer Care Center
<http://www.schneider-electric.com/contact>
35, rue Joseph Monier
CS 30323
F- 92506 Rueil Malmaison Cedex
RCS Nanterre 954 503 439
Capital social 896 313 776 €

www.schneider-electric.com

Published by Schneider Electric

ENVEOLI2201001_V1

© 2019 - Schneider Electric – All rights reserved

07/2022