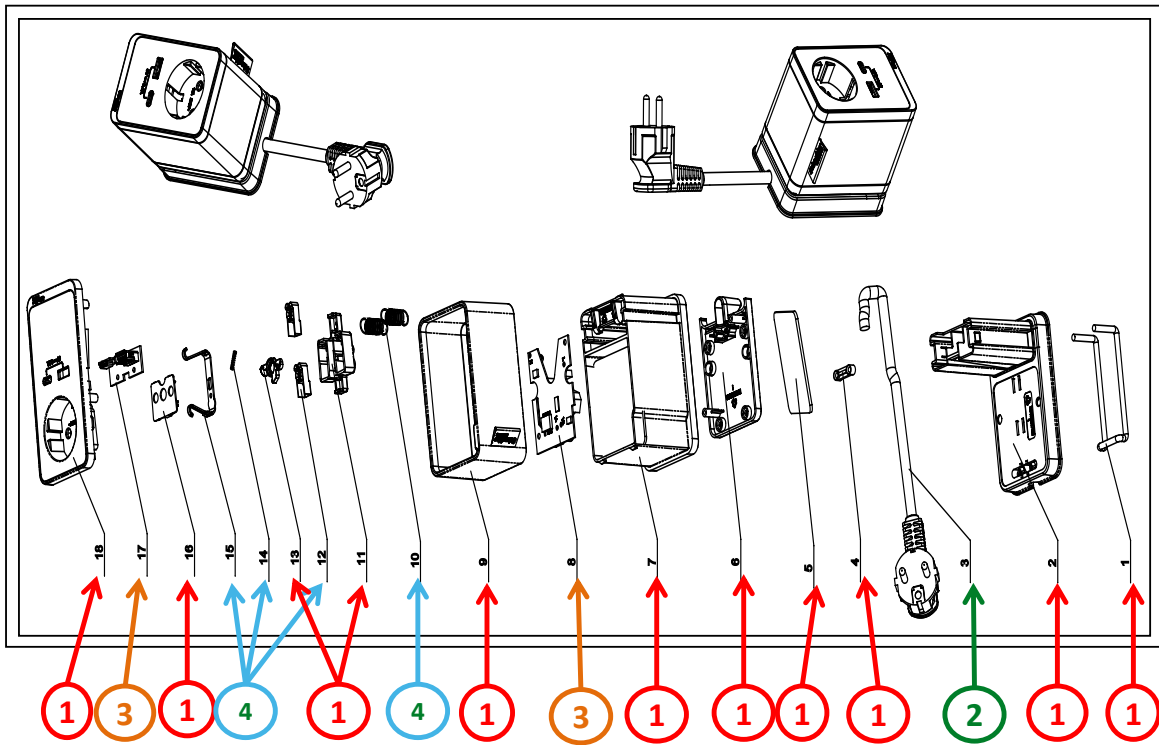


# Product End of Life Instructions

## Unica System + Desk Unit S



## End of Life Instructions



Recommendation	Number on drawing	Component / Material	Weight (in g)	Comment
To be dismantled	1	ELASTIC BAND / Rubber	4.7	
To be dismantled	1	BASE / ABS	56.2	Shredding
To be depolluted	2	CABLE WITH PLUG	237	
To be dismantled	1	CABLE CLIPS / PP	0.4	Shredding
To be dismantled	1	RUBBER PAD / SILICON	15.5	
To be dismantled	1	BOTTOM COVER / PC	12.8	Shredding
To be dismantled	1	CASING / PC	52.5	Shredding
To be depolluted	3	MAIN POWER PCBA	29	
To be dismantled	1	FABRIC SUPPORT / PC	36.5	Shredding
To be dismantled	4	SPRING / SS	3	
To be dismantled	1	SOCKET REAR HOUSING / PC	5.1	Shredding
To be dismantled	4	SOCKET CONNEST / COPPER	5	
To be dismantled	1	SHUTTER / PA	0.6	Shredding
To be dismantled	4	SHUTTER SPRING / SS	0.3	
To be dismantled	4	SOCKET EARTH/E / BRASS	3.8	
To be dismantled	1	SOCKET MIDDLE / PC	0.8	Shredding
To be depolluted	3	USB SOCKET PCBA	5.3	
To be dismantled	1	CENTERPLATE / PC	30.1	Shredding



## Product description

Manufacturer identification	Schneider Electric Industries SAS
Brand name	Schneider Electric
Product function	The main function of the Cepella Desk unit is to allow users to connect and disconnect the plug of an electrical load or the source of a signal from a network.
Product reference	INS44050
Additional similar product references	INS44050
Total representative product mass	510.5 g
Representative product dimensions	85 x 105 x 66
Date of information release	10/2020



## Additional information

Legal information	The product family must be disposed according to the legislation of the country. This document is intended for use by end of life recyclers or treatment facilities. It provides the basic information to assure an appropriate end of life treatment for the components and materials of the product.	
Recyclability potential	<b>20%</b>	Based on "ECO'DEEE recyclability and recoverability calculation method" (version V1, 20 Sep. 2008 presented to the French Agency for Environment and Energy Management: ADEME).

Schneider Electric Industries SAS  
Country Customer Care Center  
<http://www.schneider-electric.com/contact>  
35, rue Joseph Monier  
CS 30323  
F- 92506 Rueil Malmaison Cedex  
RCS Nanterre 954 503 439  
Capital social 896 313 776 €

[www.schneider-electric.com](http://www.schneider-electric.com)

ENVEOLI2009002\_V1

Published by Schneider Electric

© 2019 - Schneider Electric – All rights reserved

10/2020