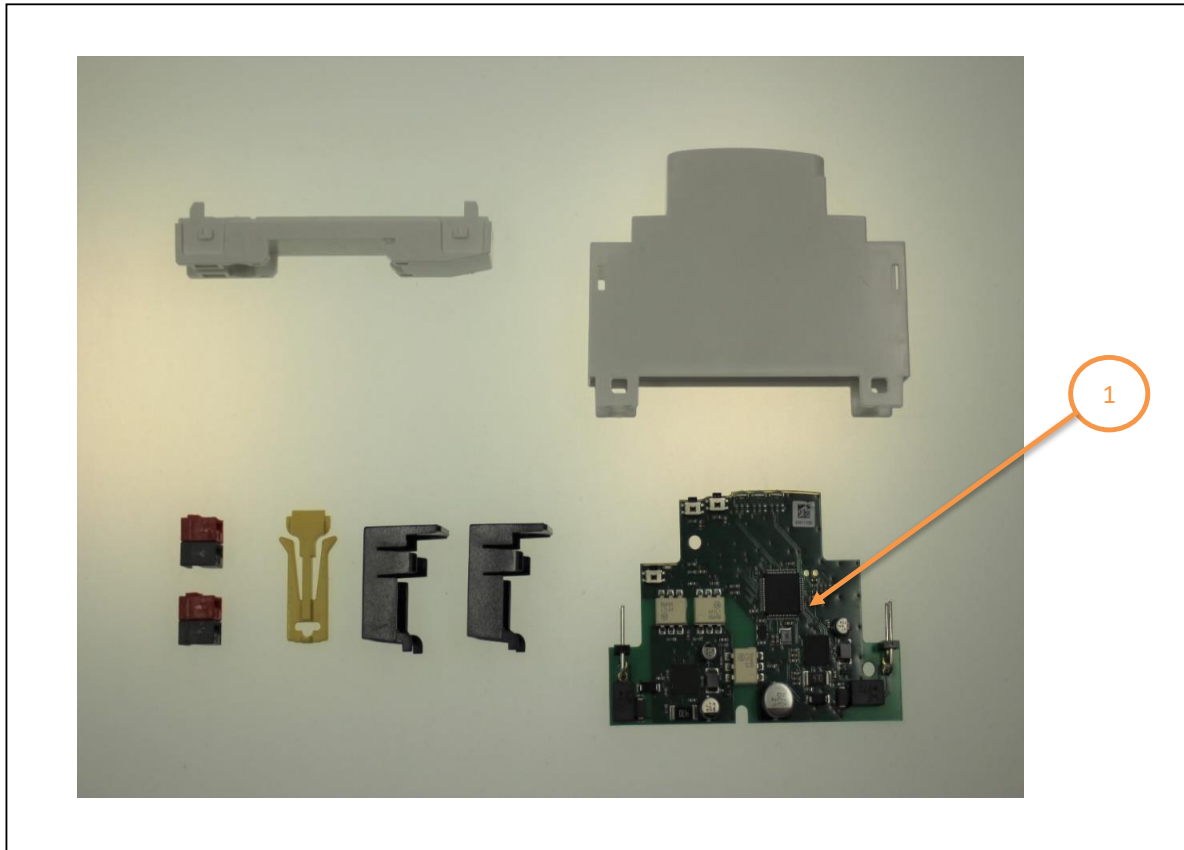


Product End of Life Instructions

Spacelogic KNX COUPLER



End of Life Instructions



Recommendation	Number on drawing	Component / Material	Weight (in g)	Comment
To be depolluted	1	Capacitors	8.26	PCBA - 1

Product description

Manufacturer identification	Schneider Electric Industries SAS
Brand name	Schneider Electric
Product function	The SpaceLogic KNX Coupler is a DIN-rail mounted KNX automation device intended for use in building management systems to interconnect KNX networks while maintaining electrical isolation and secure communication.
Product reference	MTN6500-0101
Total representative product mass	49 g
Representative product dimensions	110mm x 18mm x 66mm
Accessories	No
Date of information release	04-2026



Additional information

Legal information	This product family is in the scope of European Union directive 2012/19/EU on Waste Electrical and Electronic Equipment (WEEE). The product family must be disposed according to the legislation of the country. This document is intended for use by end of life recyclers or treatment facilities. It provides the basic information to assure an appropriate end of life treatment for the components and materials of the product.
In case of special transportation: transportation method	No
Recyclability potential	0% The recyclability rate was calculated from the recycling rates of each material making up the product based on REEECY'LAB tool developed by Ecosystem, for components/materials not covered by the tool, data from the EIME database and the related PSR was taken. If no data was found a conservative assumption was used (0% recyclability).

Schneider Electric Industries SAS
Country Customer Care Center
<http://www.se.com/contact>
35, rue Joseph Monier
CS 30323
F- 92500 Rueil Malmaison Cedex
RCS Nanterre 954 503 439
Capital social 928 298 512 €

www.se.com

ENVEOLI1911009_V2

Published by Schneider Electric

© 2023 - Schneider Electric – All rights reserved

04-2026