

Product End of Life Instructions

Altivar Machine ATV320, Variable speed drive, 7.5 kW, 380 to 500V, 3 phases, IP65, Vario

Altivar Machine ATV320





Potential disassembly risks

The information provided in this document assumes that the product is completely de-energized and uninstalled (refer to the instructions provided in the appropriate product manuals).

Dismantling/disassembling the product may entail hazards caused by, for example, sharp edges, chemical aggression or ejected parts.

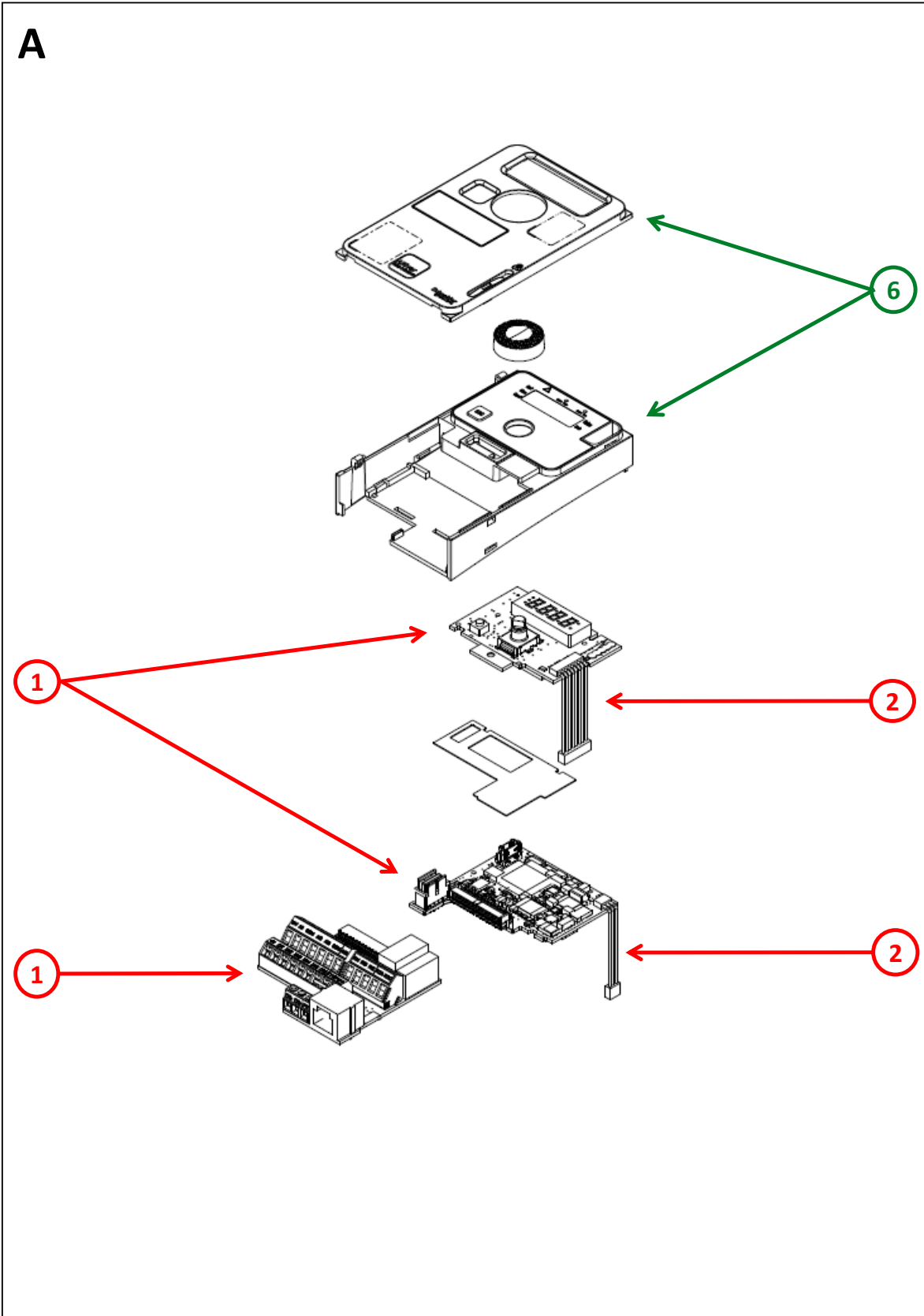
▲ WARNING

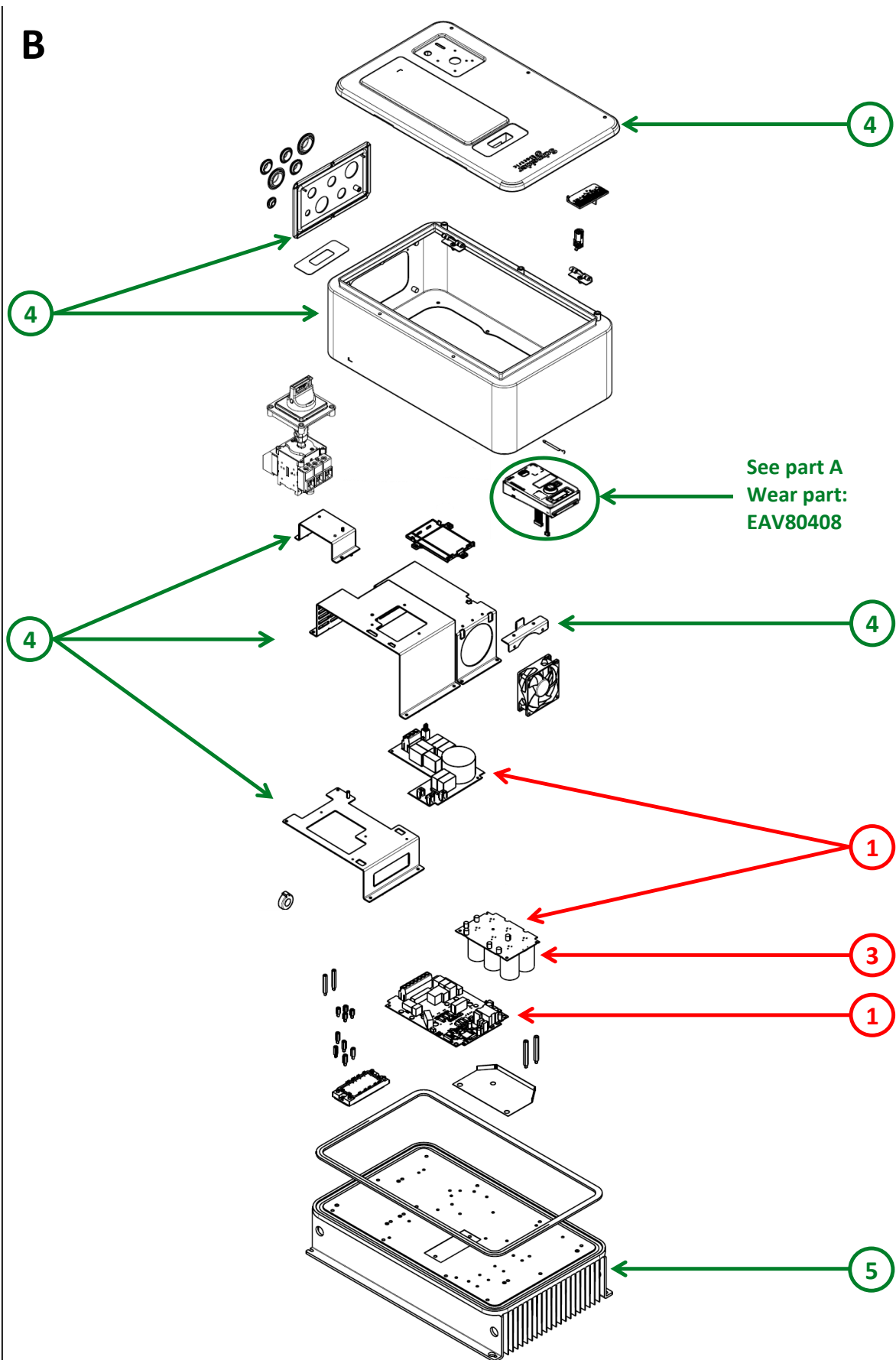
HAZARD DUE TO INSUFFICIENT PROTECTION

- Implement all safety measures required by the applicable regulations and by the processes used to dismantle/disassemble and dispose of the product.
- Use all necessary personal protective equipment such as gloves and goggles.

Failure to follow these instructions can result in death or serious injury.

 End of Life Instructions





Recommendation	Number on drawing	Component / Material	Weight (in g)	Comment
To be depolluted	1	Electronic Board (Power and Communication) > 10cm ²	1485	
To be depolluted	2	Cable (high current)	303	
To be depolluted	3	Electrolyte capacitors which size: height > 25 mm, diameter > 25 mm or proportionately similar volume	420	
To be dismantled	4	Steel	10362	Fan Support - Vario Cover - Filter Support - Housing - Plate
To be dismantled	5	Aluminium	11389	Heatsink
To be dismantled	6	PC, ABS-PC, PA, PA6, HDPE, SAN with or without additive, PP+EPDM and PP	52	Control Door - Control Support
Other			2489	

Product description

Manufacturer identification	Schneider Electric Industries SAS
Brand name	Schneider Electric
Product function	The main function of the Altivar Machine product range is the speed control and variation of a synchronous, asynchronous electric motor for fluid management and industrial applications.
Product reference	ATV320U75N4WS
Description of the range	This range consists of products Altivar Machine ATV320, a variable speed drive designed for Original Equipment Manufacturers (OEMs) that meets simple and advanced application requirements for a 3 Phases synchronous and asynchronous motors from 5,5 to 7,5 kW (7,5 to 10 HP).
Total representative product mass	26,5 kg
Representative product dimensions	521mm x 320mm x 335mm
Accessories	No accessories needed.
Date of information release	01/09/2025

Additional information

Legal information	The product family must be disposed according to the legislation of the country. This document is intended for use by end of life recyclers or treatment facilities. It provides the basic information to assure an appropriate end of life treatment for the components and materials of the product.
In case of special transportation: transportation method	No special transportation.
Recyclability potential	89% The recyclability rate was calculated from the recycling rates of each material making up the product based on REEECY'LAB tool developed by Ecosystem, for components/materials not covered by the tool, data from the EIME database and the related PSR was taken. If no data was found a conservative assumption was used (0% recyclability).

Schneider Electric Industries SAS

Country Customer Care Center

<http://www.se.com/contact>

35, rue Joseph Monier

CS 30323

F- 92500 Rueil Malmaison Cedex

RCS Nanterre 954 503 439

Capital social 928 298 512 €

www.se.com

ENVEOLI1908005_V2

Published by Schneider Electric

© 2023 - Schneider Electric – All rights reserved

09-2025