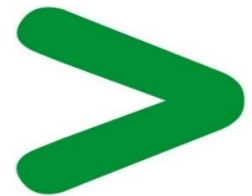


# Product End of Life Instructions

Harmony GTO 5" & 7" Series

Harmony GTO





## Potential disassembly risks

The Circularity profile provides information about preparation for re-use and treatment. It identifies the relevant EEE components and materials as well as their location. Safety instructions for product dismantling and depollution are provided into the User manual or maintenance guide.

### ⚠ WARNING

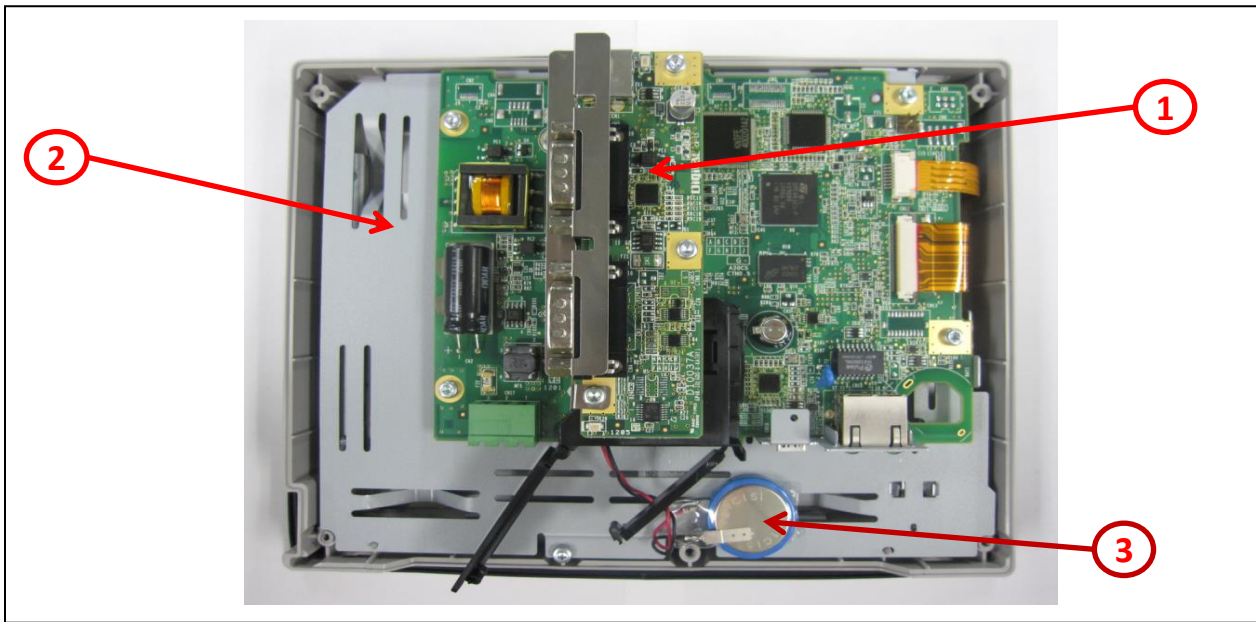
#### HAZARD OF ARC FLASH OR FIRE

- Disconnect battery terminals before disassembly
- Avoid any electrical connection between the terminals

**Failure to follow these instructions can result in death or serious injury.**



## End of Life Instructions



Recommendation	Number on drawing	Component / Material	Weight (in g)	Comment
To be depolluted	1	Electronic Board (Communication) > 10cm <sup>2</sup>	247.1	PCBA
To be depolluted	2	LCD (surface > 100cm <sup>2</sup> ) and all those back-lighted with gas discharge lamps	205	LCD
Potential hazards	3	Batteries	2.5	
Other			745.4	



## Product description

Manufacturer identification	Schneider Electric Industries SAS
Brand name	Schneider Electric
Product function	Advanced touchscreen panel
Product reference	HMIGTO4310
Additional similar product references	HMIGTO2300 HMIGTO2300A HMIGTO2300C HMIGTO2300FC HMIGTO2300FCW HMIGTO2300FW HMIGTO2310 HMIGTO2310A HMIGTO2310C HMIGTO2310FCW HMIGTO2310FW HMIGTO2315 HMIGTO2315A HMIGTO2315FW HMIGTO2315FZ02 HMIGTO3510 HMIGTO3510A HMIGTO3510C HMIGTO3510FC HMIGTO3510FCW HMIGTO3510FW HMIGTO3510REQWTRA HMIGTO3510REQWTRB HMIGTO3510SWV HMIGTO4310A HMIGTO4310C HMIGTO4310FC HMIGTO4310FCW HMIGTO4310FW HMIGTO4310REQWPSA HMIGTW7354I XBTGT.KNX-74
Total representative product mass	1200 g
Representative product dimensions	173mm x 218mm x 60mm
Accessories	No
Date of information release	2023/12/19



## Additional information

Legal information	This product family is in the scope of European Union directive 2012/19/EU on Waste Electrical and Electronic Equipment (WEEE). The product family must be disposed according to the legislation of the country. This document is intended for use by end of life recyclers or treatment facilities. It provides the basic information to assure an appropriate end of life treatment for the components and materials of the product.	
Recyclability potential	<b>25%</b>	Recyclability rate has been calculated based on REEECYLAB tool developed by Ecosystem, for components/materials not covered by the tool, data from the “ECO’ DEEE recyclability and recoverability calculation method” was taken. If no data was found a conservative assumption was used (0% recyclability).

Schneider Electric Industries SAS

Country Customer Care Center  
<http://www.se.com/contact>

35, rue Joseph Monier  
CS 30323  
F- 92500 Rueil Malmaison Cedex  
RCS Nanterre 954 503 439  
Capital social 928 298 512 €

[www.se.com](http://www.se.com)

ENVEOLI1402012\_V2

Published by Schneider Electric

© 2023 - Schneider Electric – All rights reserved

2023/12/19