

Product End-of-Life Instructions

Product Range: *Motion Sensors*

Marketing Model/Name: *Occupancy Sensor Indoor 360*

Motion Sensor, Ref : 5753L

This range consists of Lighting Level sensor and Occupancy sensor

Purpose:

The product family must be disposed according to the legislation of the country. This document is intended for use by end of life recyclers or treatment facilities. It provides the basic information to assure an appropriate end of life treatment for the components and materials of the product.

Note :

This product family is in the scope of EU directive 2002/96/EC, Waste Electrical and Electronic Equipment (WEEE).

Photo of Product Environmental Family



Size in mm: Not Available

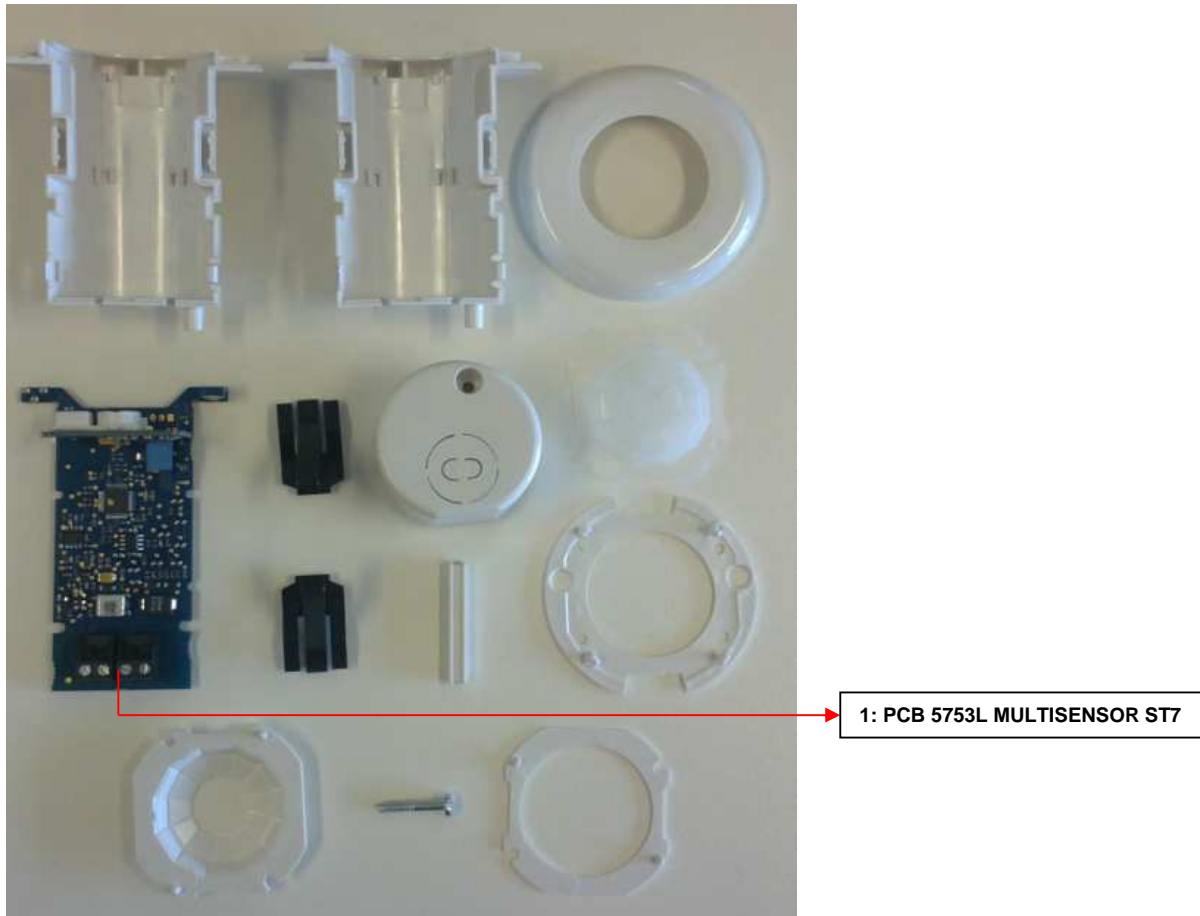
H x L x D in mm:

Weight: 199.8 grams

Operations recommended for the end of life treatment

There are several steps to process the products at the end of life so as to recover components, materials or energy : Reuse → Separation for special treatment → Other dismantling → Shredding.

The components of the products that optimize the recycling performances are listed, identified and located hereunder.



Recommendation	Number on drawing	Components	Weight (g)	Comment
Depollution	1	PCB 5753L MULTISENSOR ST7	23.17 g	

Schneider Electric SA
 43-45, boulevard Franklin Roosevelt
 F-92500 Rueil-Malmaison Cedex (France)
 Tel.: +33 (0) 1 41 29 70 00
 www.schneider-electric.com

The version of the Guide used to create the document: End of Life
 Instruction Drafting Guide of Schneider Electric version V2

ENVEOLI121002EN

Publication date : 09/11/2018