

PLEASE NOTE

- Electrical equipment should be installed, operated, serviced, and maintained only by qualified personnel.
- No responsibility is assumed by Schneider Electric for any consequences arising out of the use of this material.

请注意

- 电气设备的安装、操作、维修和维护工作仅限于合格人员执行。
- Schneider Electric不承担由于使用本资料所引起的任何后果。

⚠️ ⚠️ DANGER / 危险

HAZARD OF ELECTRIC SHOCK, EXPLOSION OR ARC FLASH

- Apply appropriate personal protective equipment (PPE) and follow safe electrical work practices. See NFPA 70E, CSA Z462 or local equivalent.
- This equipment must only be installed and serviced by qualified electrical personnel.
- Turn off all power supplying this equipment before working on or inside equipment. Lock the switchgear in the isolated position.
- Always use a properly rated voltage sensing device to confirm power is off.
- Install safety barriers and display a danger sign.
- Replace all devices, doors, and covers before turning on power to this equipment.
- This device is only suitable for TT / TN grounding system, and PE terminal must be grounded.
- This device can only be installed when the breaker is switched off. Manual operation tests are required after installation to ensure correct installation.

Failure to follow these instructions will result in death or serious injury.

电击、爆炸或弧闪的危险

- 采用适当的个人防护设备 (PPE) 并遵循电气作业安全守则。请参阅 NFPA 70E, CSAZ462 或当地对应的标准。
- 只有具备相应资质的电气人员才能安装和维修该设备。
- 在该设备表面或内部工作之前, 请关闭设备的全部电源。将开关锁定在隔离位置。
- 确保使用合适的额定电压传感器确认电源已关闭。
- 安装安全栅并显示危险标志。
- 更换所有设备、门和盖, 然后再打开该设备的电源
- 本设备仅适用于TT/TN接地系统, 务必将PE接线端子接地。
- 必须在断路器分闸状态下安装本设备, 安装后需进行手动操作测试, 确保正确安装。

不遵循上述说明将导致人员伤亡。

⚠️ WARNING / 警告

HAZARD OF ELECTRIC SHOCK OR ARC FLASH

- U-terminal or O-terminal should be used for wiring.
- It is forbidden to wire the power supply to the R1/R2/R4/PE terminals.
- Always install the terminal cover back to its original place after wiring is completed.
- Dielectric tests on DC24V are prohibited.
- It is prohibited to trigger closing and opening instructions simultaneously.
- It is prohibited to use this device to electrical operation without MCCB.
- Counterclockwise rotation is prohibited, during manual operation

Failure to follow these instructions can result in death, serious injury or equipment damage

可能有电击、电弧灼伤的危险

- 接线时, 需使用U型或O型接线端子。
- 禁止设备电源与R1/R2/R4/PE接线端相接。
- 完成接线后, 务必将端子罩装回原处。
- 本设备额定电压为DC24V时, 禁止进行介电测试。
- 禁止远程合闸、分闸指令同时触发。
- 禁止在不带断路器的情况下电动空载运行。
- 手动操作时, 禁止逆时针旋转。

不遵循上述说明, 可能导致人员伤亡、严重伤害或设备损坏。

Manufacture Date

The product's manufacture date is coded PP-YYYY-WWW-D, where:

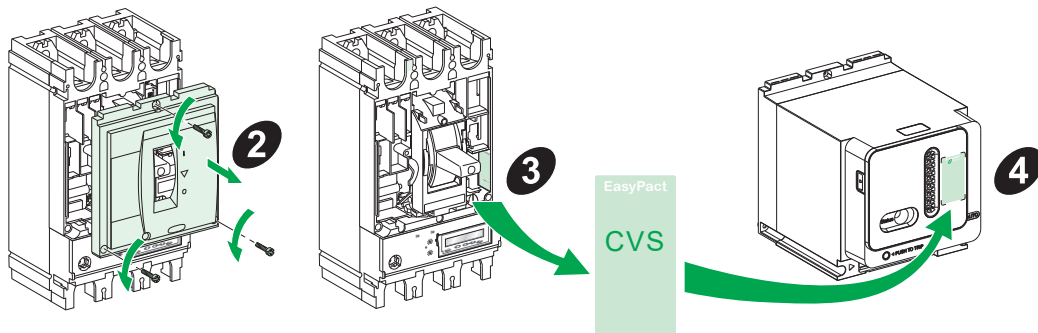
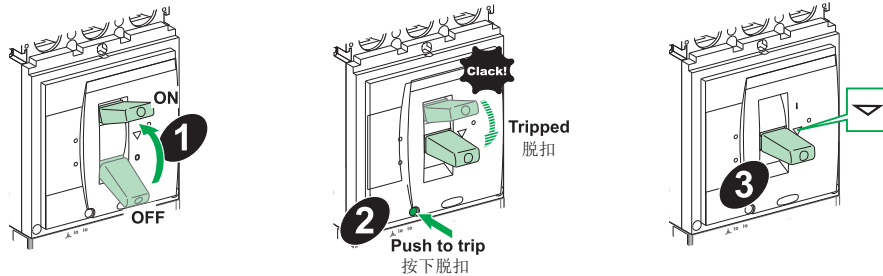
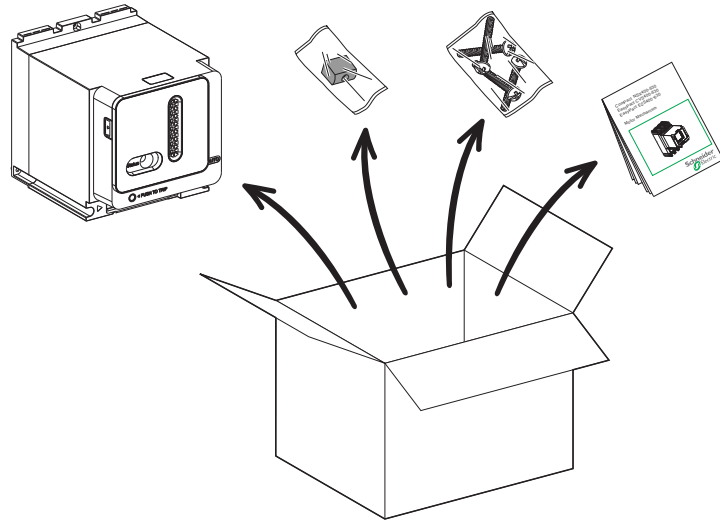
- PP: plant code
- YYYY: year of manufacture
- WWW: week of manufacture
- D: weekday of manufacture (Monday = 1)

制造日期

产品制造日期采用如下代码 PP-YYYY-WWW-D, 其中:

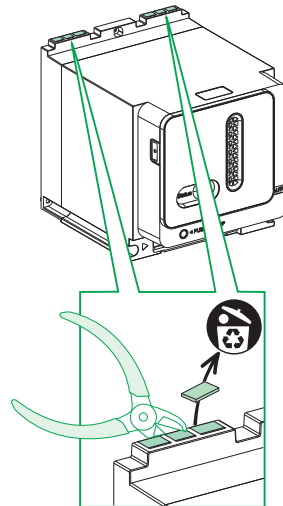
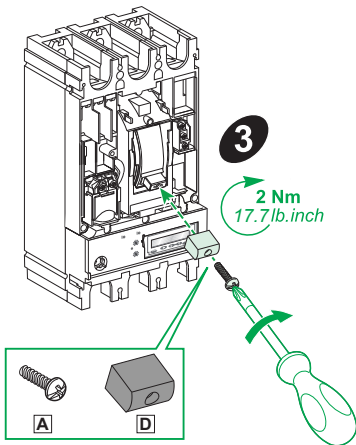
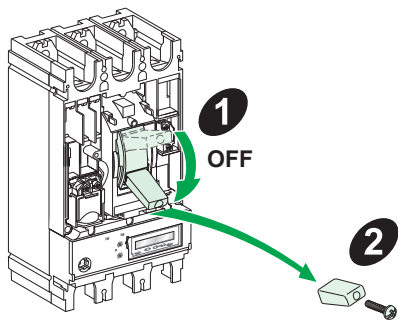
- PP: 工厂代码
- YYYY: 制造年份
- WWW: 第几周制造
- D: 星期几制造 (星期一 = 1)



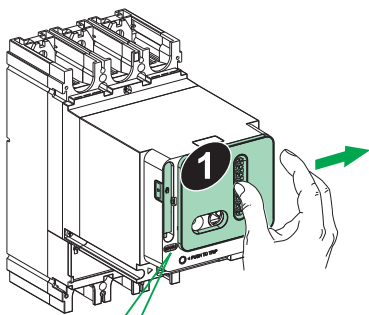
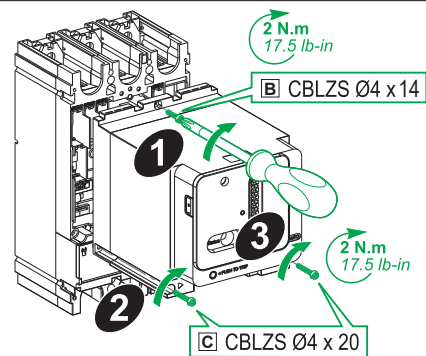




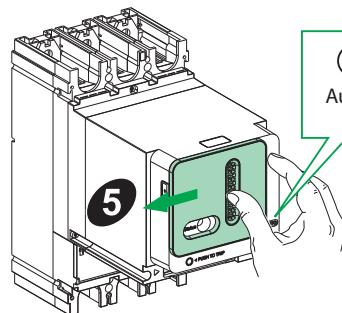
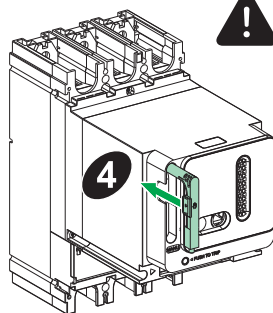
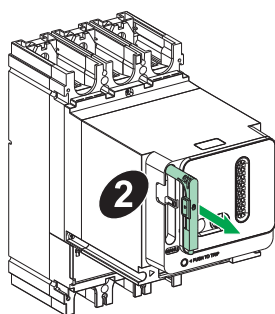
OFF



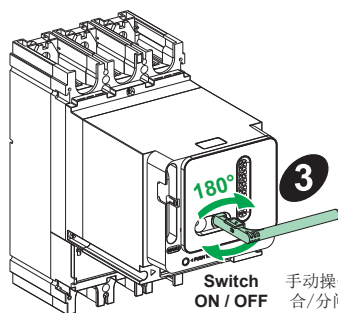
OFF
MCCB



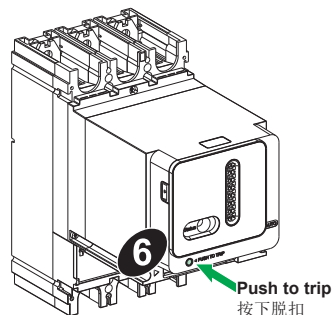
MANU
Manual Mode
手动模式



AUTO
Auto Mode
自动模式



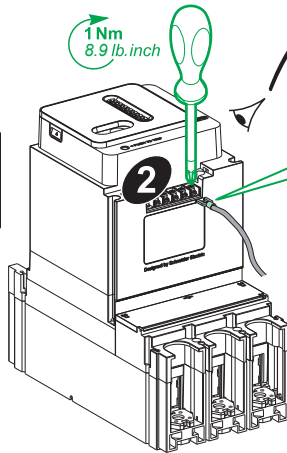
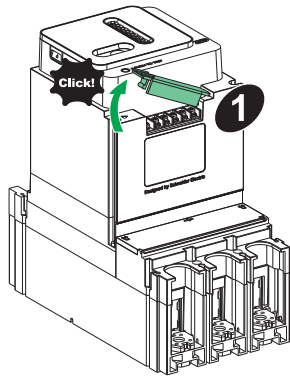
180°
Switch 手动操作
ON / OFF 合/分闸



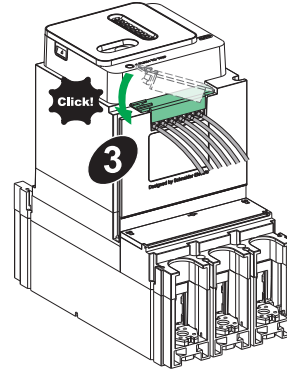
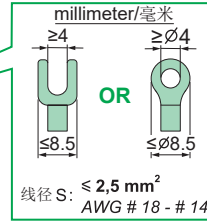
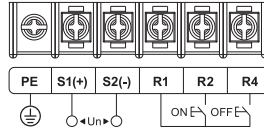
Push to trip
按下脱扣



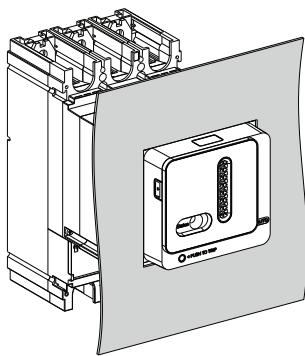
Manual operation tests are required after installation to ensure that the device is installed correctly.
安装后需进行手动操作测试，确保本设备正确安装。



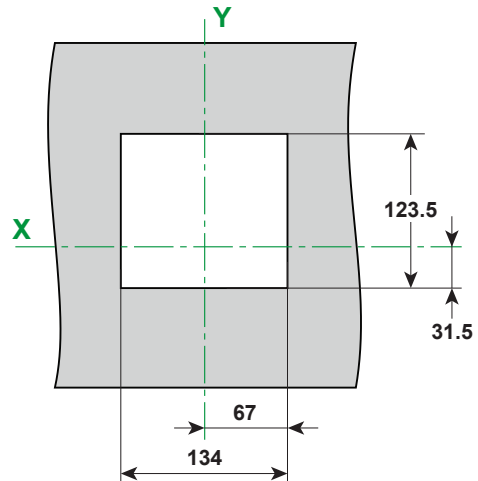
i No connection with SDE.
与SDE无连接。



This motor mechanism is only suitable for TT / TN grounding system,
and PE terminal must be grounded.
本电动操作机构仅适用于TT/TN接地系统，务必将PE接线端子接地。



millimeter/毫米



Printed on recycled paper