

- NOTES:**
1. INSTALLATION SHALL COMPLY WITH ALL APPLICABLE NATIONAL, STATE AND LOCAL CODES.
  2. REFER TO PRODUCT DOCUMENTATION FOR ADDITIONAL DETAILS PRIOR TO INSTALLATION AND SITE PREPARATION WORK.
  3. ALL DIMENSIONS ARE IN INCHES [MILLIMETERS].
  - Δ4. CLEARANCE DIMENSIONS ARE REQUIRED FOR AIRFLOW AND SERVICE ACCESS ONLY. CONSULT WITH THE LOCAL SAFETY CODES AND STANDARDS FOR ADDITIONAL REQUIREMENTS IN YOUR LOCAL AREA.
  - Δ5. REMOVE THE RUBBER COVER AND CUT HOLES FOR SIGNAL CABLES.
  - Δ6. THIS INFORMATION PROVIDES APPROXIMATE CENTER OF GRAVITY CALCULATION.
  7. WEIGHT OF UNIT WITHOUT BATTERY MODULES: 271 lbs [123 kg].
  8. WEIGHT OF 1 BATTERY MODULE: 60 lbs [27 kg].
  9. MAXIMUM WEIGHT OF UNIT (WITH 24 BATT. MODULES): 1700 lbs [771 kg].
  10. CABLE ENTRY IS FROM REAR OF THE UNIT.
  11. OPERATING TEMPERATURE: 32°F TO 104°F [0°C TO 40°C].
  12. PROTECTION CLASS: IP20.
  13. COLOR: RAL 9003.

SPECIFICATIONS	
NOMINAL BATTERY VOLTAGE (V)	+/- 120V DC
BATTERY TYPE	LEAD ACID
MAXIMUM NUMBER OF BATTERY STRINGS	12 STRINGS (24 BATTERY MODULES)
NUMBER OF BATTERY BLOCKS PER STRING	20

THIS DRAWING AND SPECIFICATIONS HEREIN ARE THE PROPERTY OF SCHNEIDER ELECTRIC AND SHALL NOT BE COPIED, REPRODUCED OR USED IN WHOLE OR IN PART, AS THE BASIS FOR THE MANUFACTURE OR SALE OF ITEMS WITHOUT WRITTEN PERMISSION FROM SCHNEIDER ELECTRIC. THIS DRAWING IS BASED UPON LATEST AVAILABLE INFORMATION AND IS SUBJECT TO CHANGE WITHOUT NOTICE.



TITLE: MODULAR BATTERY CABINET FOR EASY 3S UPS  
240V DC LEAD ACID BATTERY MAX 12 STRINGS GENERAL ARRANGEMENT

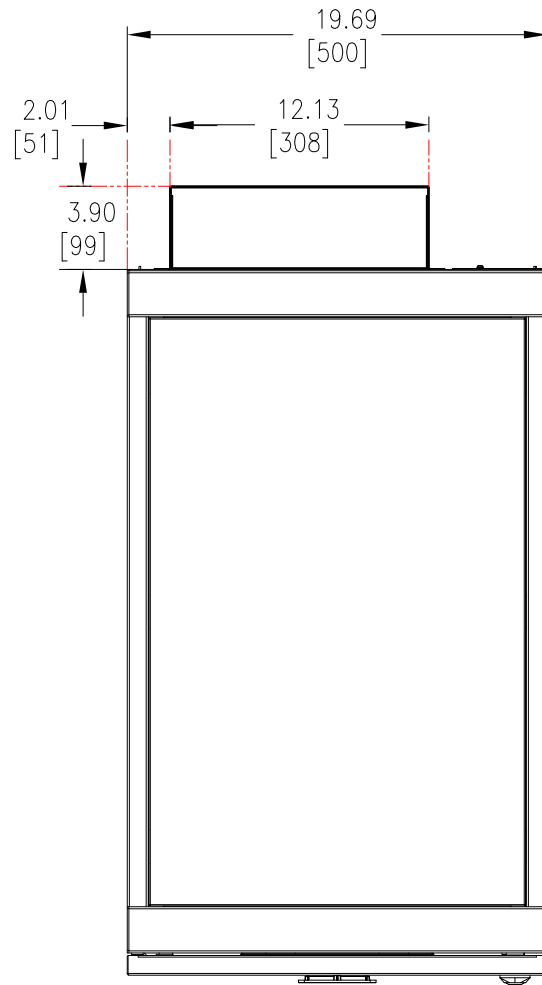
DWG NO: E3SXR7 REV. 0

DRAWN BY: BALA 29-JAN-21 THIRD

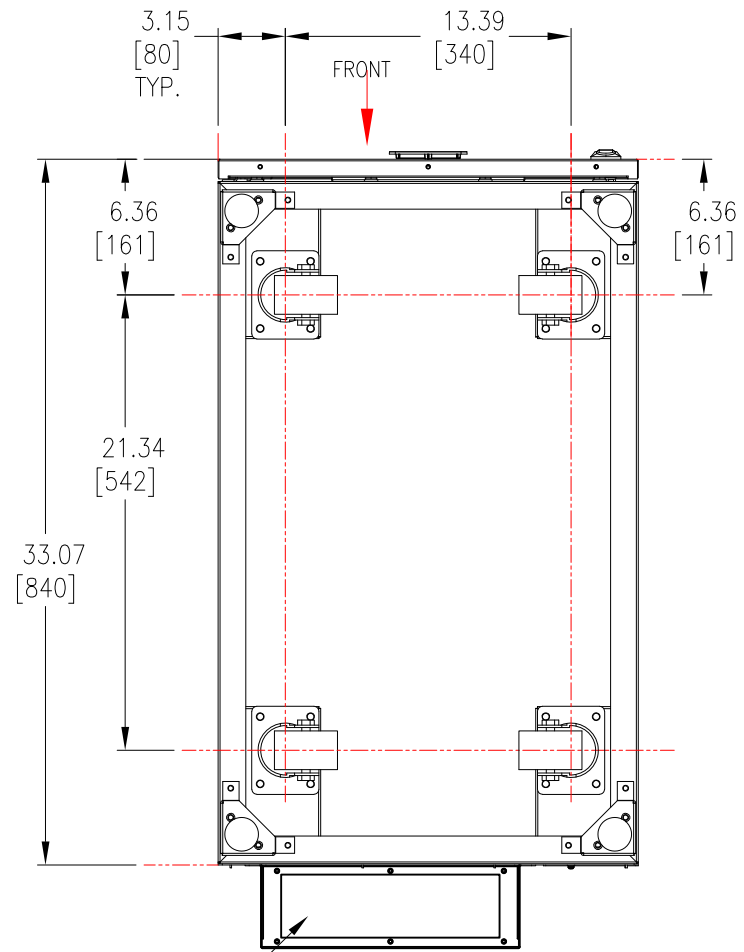
ENGINEER: YaPing Yang 2-MAR-21 ANGLE

PROJECT: SUBMITTAL DRAWINGS SHEET 1 OF 4

APPROVED BY: YaPing Yang 2-MAR-21 PROJECTION



TOP VIEW



BOTTOM VIEW

NOTES:

1. INSTALLATION SHALL COMPLY WITH ALL APPLICABLE NATIONAL, STATE AND LOCAL CODES.
2. REFER TO PRODUCT DOCUMENTATION FOR ADDITIONAL DETAILS PRIOR TO INSTALLATION AND SITE PREPARATION WORK.
3. ALL DIMENSIONS ARE IN INCHES [MILLIMETERS].
- △4. DRILL/PUNCH HOLES IN PLATE. REMOVE PLATE FROM CABINET BEFORE DRILLING/PUNCHING.

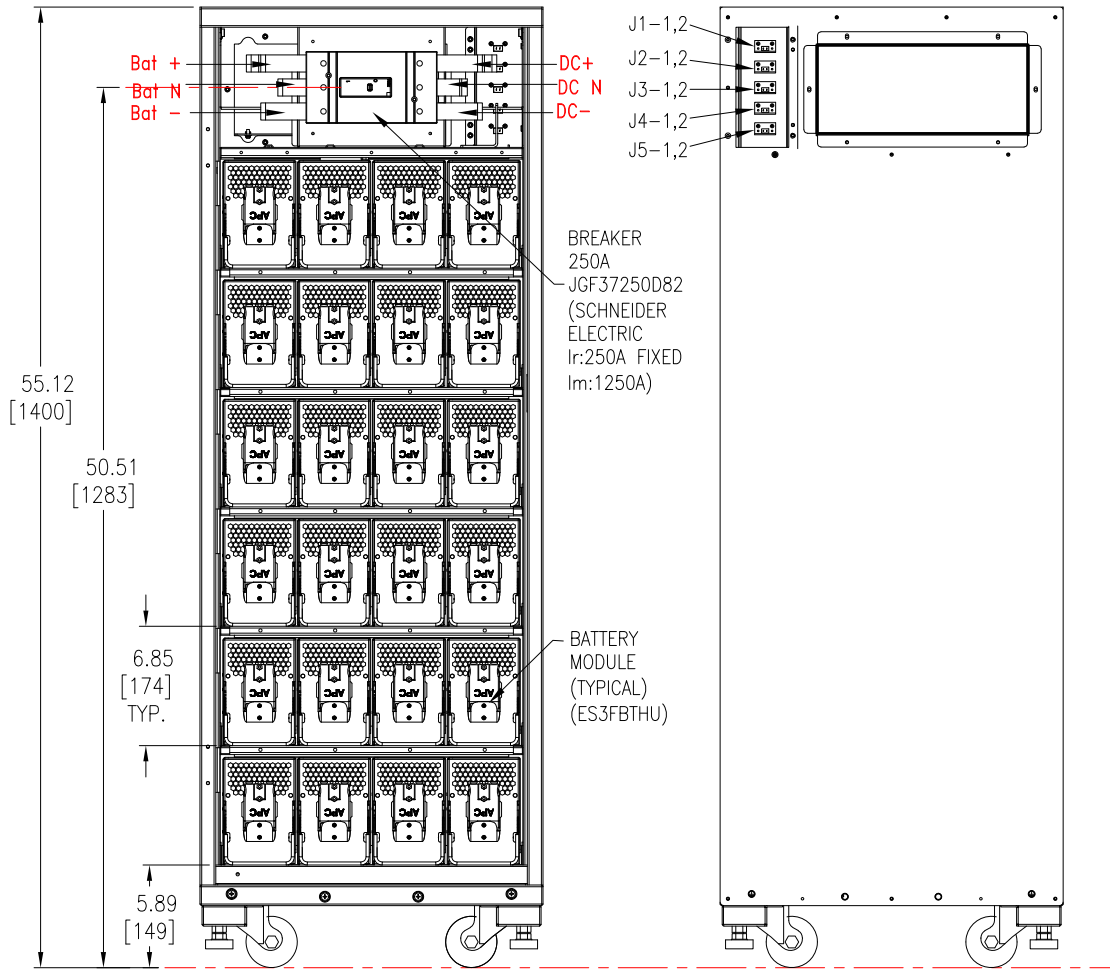
THIS DRAWING AND SPECIFICATIONS HEREIN ARE THE PROPERTY OF SCHNEIDER ELECTRIC AND SHALL NOT BE COPIED, REPRODUCED OR USED IN WHOLE OR IN PART, AS THE BASIS FOR THE MANUFACTURE OR SALE OF ITEMS WITHOUT WRITTEN PERMISSION FROM SCHNEIDER ELECTRIC. THIS DRAWING IS BASED UPON LATEST AVAILABLE INFORMATION AND IS SUBJECT TO CHANGE WITHOUT NOTICE.



TITLE: MODULAR BATTERY CABINET FOR EASY 3S UPS  
240V DC LEAD ACID BATTERY MAX 12 STRINGS  
TOP-BOTTOM VIEWS AND ANCHORING DETAILS

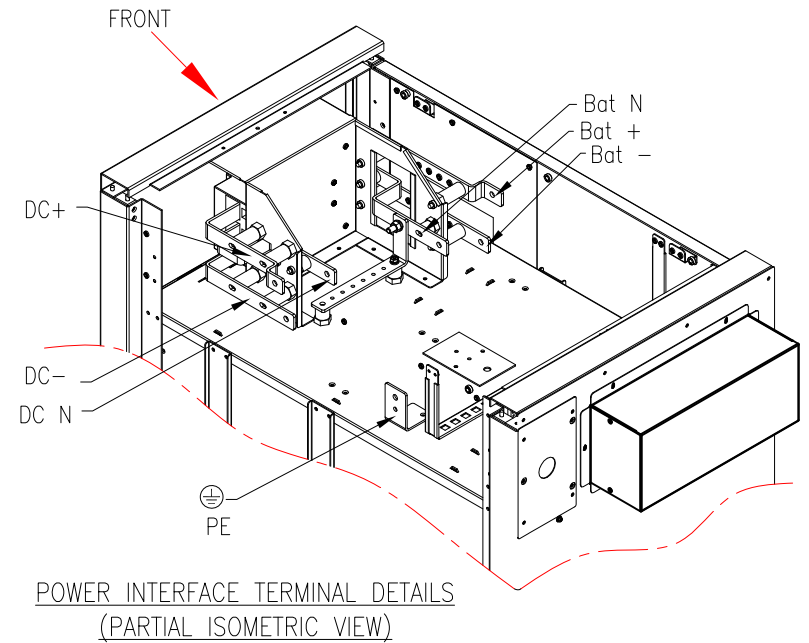
PROJECT: SUBMITTAL DRAWINGS SHEET 2 OF 4

DWG NO:	E3SXR7		REV.	0
DRAWN BY:	BALA	29-JAN-21	THIRD ANGLE PROJECTION	
ENGINEER:	YaPing Yang	2-MAR-21		
APPROVED BY:	YaPing Yang	2-MAR-21		



INTERNAL FRONT VIEW

PARTIAL INTERNAL REAR VIEW



NOTES:

1. INSTALLATION SHALL COMPLY WITH ALL APPLICABLE NATIONAL, STATE AND LOCAL CODES.
2. REFER TO PRODUCT DOCUMENTATION FOR ADDITIONAL DETAILS PRIOR TO INSTALLATION AND SITE PREPARATION WORK.
3. ALL DIMENSIONS ARE IN INCHES [MILLIMETERS].
4. SOME STRUCTURAL DETAILS HAVE BEEN OMITTED FOR THE PURPOSE OF CLARITY.

THIS DRAWING AND SPECIFICATIONS HEREIN ARE THE PROPERTY OF SCHNEIDER ELECTRIC AND SHALL NOT BE COPIED, REPRODUCED OR USED IN WHOLE OR IN PART, AS THE BASIS FOR THE MANUFACTURE OR SALE OF ITEMS WITHOUT WRITTEN PERMISSION FROM SCHNEIDER ELECTRIC. THIS DRAWING IS BASED UPON LATEST AVAILABLE INFORMATION AND IS SUBJECT TO CHANGE WITHOUT NOTICE.

**Schneider**  
Electric

TITLE: MODULAR BATTERY CABINET FOR  
EASY 3S UPS  
240V DC LEAD ACID BATTERY MAX 12 STRINGS  
INTERNAL DETAILS AND POWER INTERFACE

DWG NO: E3SXR7 REV. 0

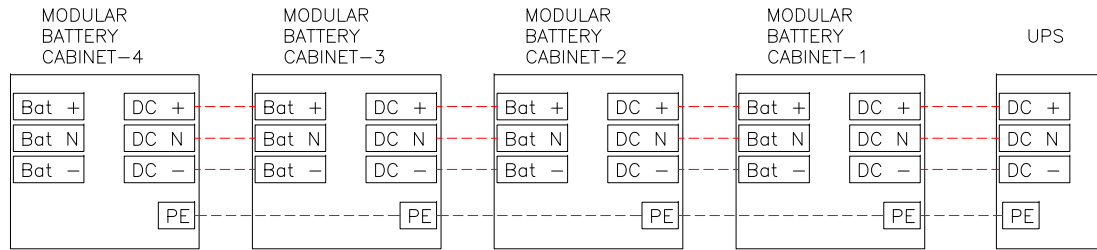
DRAWN BY: BALA 29-JAN-21 THIRD

ENGINEER: YaPing Yang 2-MAR-21 ANGLE

APPROVED BY: YaPing Yang 2-MAR-21 PROJECTION

PROJECT: SUBMITTAL DRAWINGS SHEET 3 OF 4

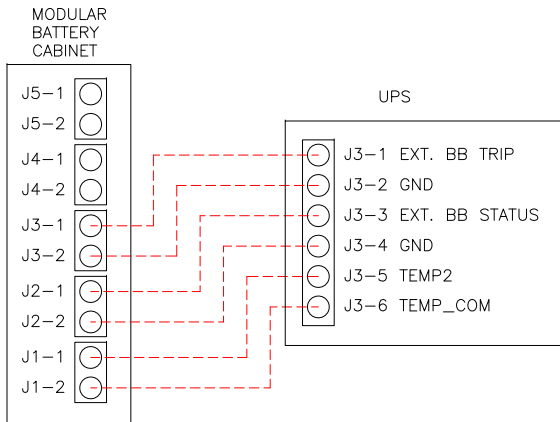
POWER CABLE INTERFACE DETAILS



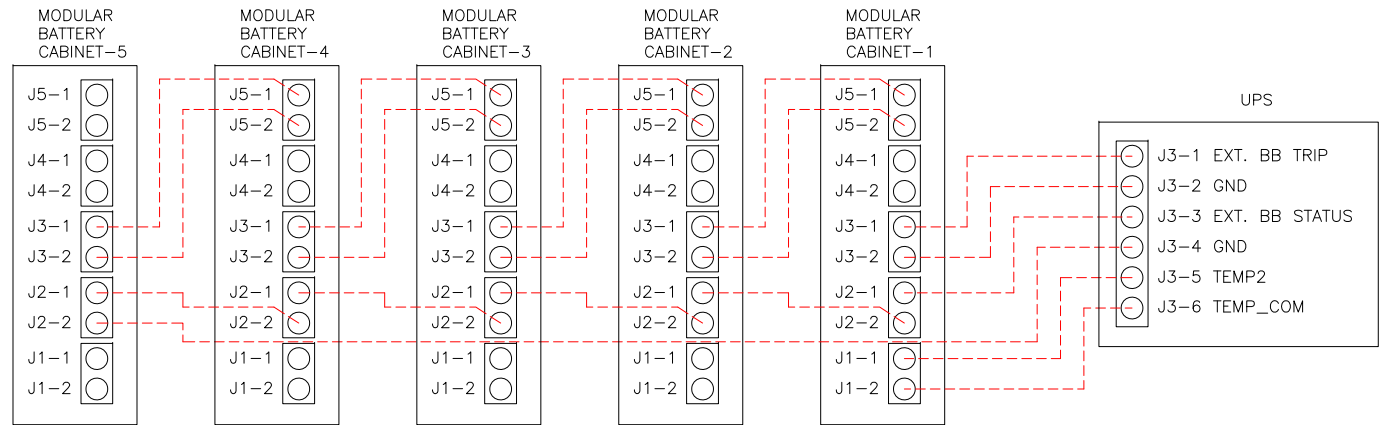
NOTE:-

1. INTERFACE CABLES PROVIDED BY OTHERS. REFER TO INSTALLATION MANUAL FOR CABLE SPECIFICATIONS.
2. THE MAXIMUM ALLOWABLE DISTANCE BETWEEN MODULAR BATTERY CABINETS AND UPS IS 656 FOOT [200 METERS].

SIGNAL CABLE INTERFACE DETAILS FOR 1 MODULAR BATTERY CABINET AND UPS



SIGNAL CABLE INTERFACE DETAILS FOR 5 MODULAR BATTERY CABINET AND UPS



NOTE:-

1. INTERFACE CABLES PROVIDED BY OTHERS. REFER TO INSTALLATION MANUAL FOR CABLE SPECIFICATIONS.
2. THE MAXIMUM ALLOWABLE DISTANCE BETWEEN MODULAR BATTERY CABINETS AND UPS IS 656 FOOT [200 METERS].

**NOTES:**

1. INSTALLATION SHALL COMPLY WITH ALL APPLICABLE NATIONAL, STATE AND LOCAL CODES.
2. REFER TO PRODUCT DOCUMENTATION FOR ADDITIONAL DETAILS PRIOR TO INSTALLATION AND SITE PREPARATION WORK.

THIS DRAWING AND SPECIFICATIONS HEREIN ARE THE PROPERTY OF SCHNEIDER ELECTRIC AND SHALL NOT BE COPIED, REPRODUCED OR USED IN WHOLE OR IN PART, AS THE BASIS FOR THE MANUFACTURE OR SALE OF ITEMS WITHOUT WRITTEN PERMISSION FROM SCHNEIDER ELECTRIC. THIS DRAWING IS BASED UPON LATEST AVAILABLE INFORMATION AND IS SUBJECT TO CHANGE WITHOUT NOTICE.



TITLE: MODULAR BATTERY CABINET FOR EASY 3S UPS  
240V DC LEAD ACID BATTERY MAX 12 STRINGS  
SIGNAL CABLE INTERFACE DETAILS

DWG NO:	E3SXR7	REV.	0
DRAWN BY:	BALA	29-JAN-21	THIRD
ENGINEER:	YaPing Yang	2-MAR-21	ANGLE
APPROVED BY:	YaPing Yang	2-MAR-21	PROJECTION

PROJECT: SUBMITTAL DRAWINGS SHEET 4 OF 4