

- NOTES:**
1. INSTALLATION SHALL COMPLY WITH ALL APPLICABLE NATIONAL, STATE AND LOCAL CODES.
 2. REFER TO PRODUCT DOCUMENTATION FOR ADDITIONAL DETAILS PRIOR TO INSTALLATION AND SITE PREPARATION WORK.
 3. ALL DIMENSIONS ARE IN INCHES [MILLIMETERS].
 - △4. CLEARANCE DIMENSIONS ARE MEANT FOR AIRFLOW AND SERVICE ACCESS ONLY. CONSULT WITH LOCAL SAFETY CODES AND STANDARDS FOR ADDITIONAL REQUIREMENTS IN YOUR LOCAL AREA.
 5. CABLE ENTRY IS FROM TOP, BOTTOM OF UNIT.
 - △4. REMOVE THE GLAND PLATES AND DRILL OR PUNCH HOLES FOR CABLES/CONDUITS.
 7. WEIGHT OF UNIT 154 lbs {70 kg}.
 8. PROTECTION CLASS: IP20.
 9. OPERATING TEMPERATURE: 32°F TO 104°F {0°C TO 40°C}.
 10. PANEL COLOR: RAL 9003, GLOSS LEVEL 85%.

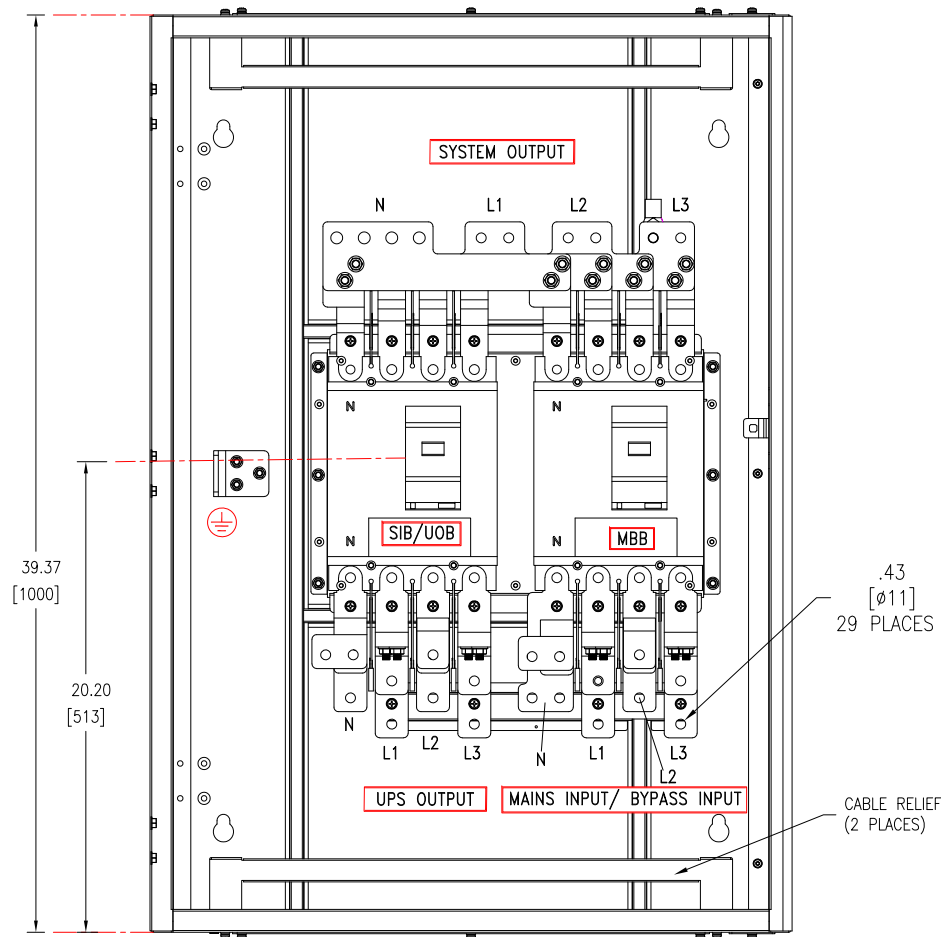
THIS DRAWING AND SPECIFICATIONS HEREIN ARE THE PROPERTY OF SCHNEIDER ELECTRIC AND SHALL NOT BE COPIED, REPRODUCED OR USED IN WHOLE OR IN PART, AS THE BASIS FOR THE MANUFACTURE OR SALE OF ITEMS WITHOUT WRITTEN PERMISSION FROM SCHNEIDER ELECTRIC. THIS DRAWING IS BASED UPON LATEST AVAILABLE INFORMATION AND IS SUBJECT TO CHANGE WITHOUT NOTICE.

Schneider Electric

TITLE: Easy UPS 3S MBP
 Input: 208V 3PH 40-70Hz
 Output: 208V 3PH 50/60Hz
 10-40kVA 3-MOD PARALLEL MAINT BYPASS PANEL
 GENERAL ARRANGEMENT

PROJECT: SUBMITTAL DRAWINGS **SHEET 1 OF 2**

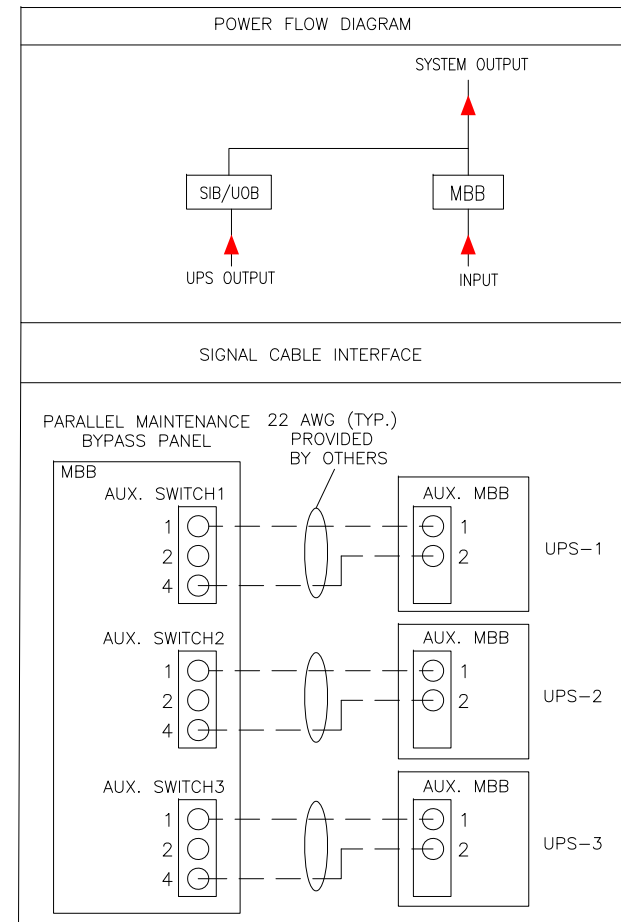
DWG NO: E3SBPAR10K40F	REV. 0
DRAWN BY: BALA	29-JAN-21
ENGINEER: YaPing Yang	2-MAR-21
APPROVED BY: YaPing Yang	2-MAR-21
THIRD ANGLE PROJECTION	



INTERNAL FRONT VIEW
(FRONT DOOR AND FRONT PANEL REMOVED)

PARALLEL MAINTENANCE BYPASS CABINET (MBC) SWITCHGEAR DETAIL (MAKE: SCHNEIDER ELECTRIC)	
DEVICE ID	MBC SKU NUMBER
SIB	E3SBBAR10K40F
MBB	LJF44600WU33X

APPLICABLE UPS RATING	BREAKER DETAILS AND TRIP SETTING (MAKE: SCHNEIDER ELECTRIC)	
	3+0 PARALLEL SYSTEM (I _r / I _{sd} / I _i / N)	2+1 PARALLEL SYSTEM (I _r / I _{sd} / I _i / N)
10kVA	200 / 1.5-10 / 1.5-11/ 4P3D	200 / 1.5-10 / 1.5-11/ 4P3D
15kVA	200 / 1.5-10 / 1.5-11/ 4P3D	200 / 1.5-10 / 1.5-11/ 4P3D
20kVA	300 / 1.5-10 / 1.5-11/ 4P3D	200 / 1.5-10 / 1.5-11/ 4P3D
30kVA	400 / 1.5-10 / 1.5-11/ 4P3D	300 / 1.5-10 / 1.5-11/ 4P3D
40kVA	600 / 1.5-10 / 1.5-11/ 4P3D	500 / 1.5-10 / 1.5-11/ 4P3D



LEGEND:

SIB---SYSTEM ISOLATION BREAKER
UOB---UNIT OUTPUT BREAKER
MBB---MAINTENANCE BYPASS BREAKER

NOTES:

1. INSTALLATION SHALL COMPLY WITH ALL APPLICABLE NATIONAL, STATE AND LOCAL CODES.
2. REFER TO PRODUCT DOCUMENTATION FOR ADDITIONAL DETAILS PRIOR TO INSTALLATION AND SITE PREPARATION WORK.
3. ALL DIMENSIONS ARE IN INCHES [MILLIMETERS].
4. FOR INTERFACE CABLE AND LUG DETAILS REFER TO PRODUCT MANUAL.

THIS DRAWING AND SPECIFICATIONS HEREIN ARE THE PROPERTY OF SCHNEIDER ELECTRIC AND SHALL NOT BE COPIED, REPRODUCED OR USED IN WHOLE OR IN PART, AS THE BASIS FOR THE MANUFACTURE OR SALE OF ITEMS WITHOUT WRITTEN PERMISSION FROM SCHNEIDER ELECTRIC. THIS DRAWING IS BASED UPON LATEST AVAILABLE INFORMATION AND IS SUBJECT TO CHANGE WITHOUT NOTICE.

Schneider Electric

TITLE: Easy UPS 3S MBP
Input: 208V 3PH 40-70Hz
Output: 208V 3PH 50/60Hz
10-40kVA 3-MOD PARALLEL MAINT.BYPASS PANEL
INTERNAL AND INTERFACE DETAILS

DWG NO:	E3SBBAR10K40F	REV.	0
DRAWN BY:	BALA	12-FEB-21	THIRD
ENGINEER:	YaPing Yang	2-MAR-21	ANGLE
APPROVED BY:	YaPing Yang	2-MAR-21	PROJECTION