



# Easy UPS 3S

10-40 kVA  
208/220 V



[se.com/ups](https://se.com/ups)

Life Is On

**Schneider**  
Electric

# Business continuity made easy

The Schneider Electric Easy UPS 3S is an easy-to-install, easy-to-use, and easy-to-service 10-40 kVA (208V) 3-phase UPS ideal for small data centers, commercial buildings, non-IT, and light industrial applications.

The Easy UPS 3S supplies power stability with robust electrical specifications and long-lasting performance to ensure your business continuity. It is designed for fast installation, intuitive operation, and ease of service, making it ideal for a wide range of small and medium business applications. This EcoStruxure™ connected UPS features a wide operating temperature range and strong overload protection, all in a compact and lightweight footprint. Start-up service optimizes your system's performance, quality, and safety. The Easy UPS 3S is the easy choice for your business continuity in the data center or electrical room.



## Easy

Simplify every step of the deployment process with the UPS that is easy to select, easy to install, easy to start up, and easy to use and service.



## Competitive specifications

Enjoy high efficiency and protection against harsh environments with robust electrical specifications and ruggedizing features.



## Robust and flexible design

Fault-tolerance and parallel options keep your site resilient.

## Typical applications

- Small data centers
- Non-IT and light industrial applications
- Manufacturing facilities
- Telecommunication
- Commercial buildings
- Healthcare
- Transportation



## Compact footprint

High density makes more room for your revenue-generating equipment.



## EcoStruxure connected

Anytime, anywhere monitoring and service support via smartphone.



Easy UPS 3S 40 kVA for internal batteries



Next-level transparency for better-informed product choices.

Learn more about the Environmental Data Program at: [se.com/ww/en/about-us/sustainability/environmental-data-program](https://www.se.com/ww/en/about-us/sustainability/environmental-data-program)

### Easy to install and start up

- Rolls into position quickly and easily
- Minimal footprint requirement with lightweight, compact form factor
- Designed for fast, efficient installation
- Input, output, and bypass breakers are included
- Emergency Power Off (EPO) switch is included
- Easy Loop test verifies UPS performance before you connect your load, without the need for a load bank
- Compact, aesthetic design fits seamlessly into your installation
- On-site start-up with Schneider Electric Services Representatives

### Easy to use, connect, monitor, and manage

- User-friendly display interface supports easy configuration
- With the optional Network Management Card, you can:
  - Monitor UPS status remotely through a web interface
  - Monitor and manage the UPS status and performance through EcoStruxure IT's cloud-based and on-premise software suites, or through SNMP integration to the Network Management System of your choice, bringing you peace of mind.
  - Manage buildings through the BACnet protocol for integration with Building Management Systems (BMSs)

### Easy to expand

- Parallel up to 4 UPSs for capacity or redundancy

### Easy to maintain

- Front and rear access for service
- Front-accessible dust filter enables quick replacement and simplified maintenance
- Schneider Electric service team available to make service easy and improve uptime with proper maintenance of your UPS and batteries

### Versatile

Tailor the UPS to your site requirements with these flexible configuration options:

- Select only the optional kits your site needs
- Internal battery options
- Extended runtime with battery cabinets

### Robust and competitive

- Up to 94% efficiency in double conversion mode
- Minimize your power losses and cooling requirements with up to unity power factor (kW=kVA)
- Protect your data center or electrical room with these fortifying features:
  - Embedded dust filter
  - Conformal coating
  - Operating temperature up to 104°F
  - Wide input voltage range

### Options

- Dry contact card
- Cold start kit
- Parallel kit
- Parallel and unitary maintenance bypass panel
- AP9547 Network Management Card
- Single unit maintenance bypass panel
- Modular battery cabinet
- Modular high-capacity battery string
- Kirk Key Kit



Dry contact card



Modular high-capacity battery string



Parallel maintenance bypass panel



Modular battery cabinet for extended runtime requirements

## Easy UPS 3S for internal batteries



### Easy UPS 3S 10-30 kVA UPS for internal batteries

- Dimensions (H×W×D):  
10-20 kVA: 55 x 15 x 38 inches  
30 kVA: 44 x 15 x 41 inches
- Batteries: VRLA – internal modular battery strings
- IP level: IP20



### Easy UPS 3S 40 kVA UPS for internal batteries

- Dimensions (H×W×D):  
55 x 20 x 43 inches
- Batteries: VRLA – internal modular battery strings
- IP level: IP20

## Comprehensive on-site services

### Start-up service: included with UPS

- Commission the installation in accordance with manufacturer's recommendations. Ensure optimal system performance from Day 1
- Supported by the Secure Network Management Card System\* with NMC firmware updates

### Maintenance services

- Ensure proper care of your mission-critical applications
- Preventive maintenance and response time upgrades, where available

### Schneider Electric-certified installation services

- Expert configuration of your equipment for optimal performance and reliability

### Flexible service plans/on-site extended warranty

- Hassle-free system maintenance
- Improve uptime at a predictable cost

\*Secure Network Management Card System sold separately. Learn more about Secure Network Management Card System [here](#).



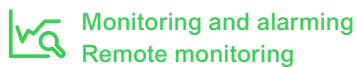
# Visibility and peace of mind

## Secure Network Management Card System\*

Schneider Electric's comprehensive Data Center Infrastructure Management (DCIM) solution, EcoStruxure IT, ensures business continuity by enabling secure monitoring, management, insights, planning, and modeling — whether from a single IT rack to hyper-scale IT — on-premises, in the cloud, and at the edge. With the included Network Management Card, you can deploy EcoStruxure IT software and services to enhance monitoring and management of your Easy UPS 3S UPS.

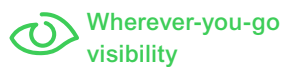


## Updating your NMC firmware matters



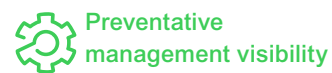
**Monitoring and alarming**  
Remote monitoring

and visibility across IT infrastructure is mission critical, because it reduces the risk of unexpected issues and downtime.



**Wherever-you-go**  
visibility

The Schneider Electric Network Management Card enables essential and secure remote monitoring and management of your Easy UPS 3S.



**Preventative**  
management visibility

Connecting your devices will improve the availability, resiliency, and efficiency of your power infrastructure systems and the IT workloads they support.



**Ongoing security compliance**

More and more cybersecurity breaches are linked to neglected firmware. Our new Secure NMC System will help you:

- Reduce exposure to attack and minimize downtime — protect your connected devices with the latest security updates.
- Achieve consistent compliance — protect your business with the only NMC firmware independently certified to the highest cybersecurity compliance level (IEC 62443-4-2).
- Never become out of date — During commissioning of your Easy UPS 3S and during maintenance activities, Schneider Electric qualified service personnel update the NMC firmware as defined in all applicable field advisories and field modifications.

Learn more at [se.com/secure-nmc](https://se.com/secure-nmc)

*\*Requires an Advantage Plan service contract or EcoCare for 3-Phase UPS membership with on-site maintenance; contact your Schneider Electric representative for availability.*

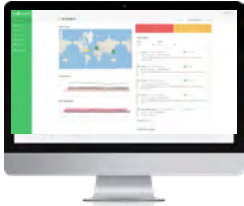


## EcoStruxure IT enables resilient, secure, and sustainable data centers and IT environments

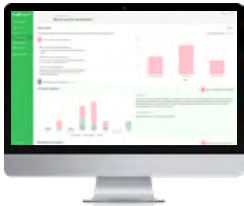
Schneider Electric's comprehensive Data Center Infrastructure Management (DCIM) solution, EcoStruxure IT, ensures business continuity by enabling secure monitoring, management, insights, planning, and modeling – whether from a single IT rack to hyper-scale IT – on-premises, in the cloud, and at the edge.

### Easy visibility

Monitoring and management software streamlines data center device management:



**EcoStruxure IT Expert** provides you a hands-on approach with **cloud-based** monitoring software that synthesizes and analyzes performance and alert data into proactive recommendations and enables wherever-you-go visibility from any device. [Try it now](#)



**EcoStruxure Data Center Expert** is a scalable end-to-end **on-premise** monitoring software that collects, organizes, and distributes critical device information, providing a comprehensive view of your company-wide, multi-vendor physical infrastructure.

### 24/7 peace of mind

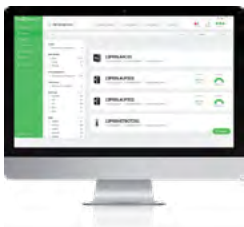
Digital services proactively monitor your critical devices:



**EcoStruxure Asset Advisor\*** for secure power and cooling provides you a hands-off approach with 24/7 remote monitoring service by the Schneider Electric Connected Services Hub experts. We monitor and troubleshoot, you relax.

### Operations, optimized

Planning and modeling software transforms data into performance insights:



**EcoStruxure IT Advisor** is a data center infrastructure planning and modeling solution that provides Data Center Managers in large enterprises and colocation data centers with full insights into their infrastructure to improve profitability, sustainability, and resiliency.

*\*Contact your local representative for availability.*

## Easy UPS 3S technical specifications

Rated Power (kVA/kW)					
	10/10	15/15	20/20	30/30	40/40
<b>Input</b>					
Input voltage (V)	208/220 V (3-phase + neutral + ground)				
Frequency (Hz)	40-70 Hz				
Input power factor	>0.99 at loads >75%				
THDI	≤4% at 100% linear load (symmetrical)				
Input voltage range	176-253 V at full load				
Dual mains input	Yes (default: single mains input)				
<b>Output</b>					
Nominal output voltage (V)	208/220 V				
Efficiency: Double conversion mode	Up to 94%				
Efficiency: ECO mode	Up to 98%				
Overload capacity in normal operation	125% for 10 minutes and 150% for 1 minute				
Output voltage tolerance	+/-1%				
<b>Communication and management</b>					
Communication interface	RS485, dry contacts, Ethernet (SNMP, Modbus, TCP/IP, BACnet)				
Control panel	Multi-function LCD, status and display console				
<b>Weights and dimensions</b>					
UPS for internal batteries, without batteries, unpackaged, shipping dimensions (H x W x D in)	55 x 15 x 38 in / 63 x 31.5 x 47 in	55 x 15 x 38 in / 63 x 31.5 x 47 in	55 x 15 x 38 in / 63 x 31.5 x 47 in	44 x 15 x 41 in / 63 x 31.5 x 47 in	55 x 20 x 43 in / 63 x 31.5 x 47 in
UPS for internal batteries, without batteries, unpackaged/shipping weight (lb)	265 / 335	291/364	291/364	342/414	412/485
Battery string (1 string/2 modules), unpackaged/shipping weight (lb)	60 lb per module				
<b>Regulatory</b>					
Safety	UL 1778:2014 5th Edition, CSA C22.2 No. 107.3-14		Performance	IEC 62040-3	
EMC/EMI/RFI	FCC Part15 Subpart B / ANSI C63.4 2014		Environmental	IEC 62040-4	
Markings	cTUVus, FCC				
<b>Battery type</b>					
Battery type	VRLA				
Nominal DC bus (100% load)	+/- 120 Vdc				
Charging power in % of output power (selectable)	1-15%				
<b>Environmental</b>					
Operating temperature	32-104°F				
Relative humidity	0 to 95% non-condensing				
Operating elevation	0 to 1,000 m at 100% load				
Audible noise at 1 m from unit	10 kVA: ≤65 dBA at 100% load; 15-30 kVA: ≤68 dBA at 100% load; 40 kVA: ≤70 dBA at 100% load				
Protection class	IP20				
Warranty	One year with Schneider Electric-certified Services Representatives Start-up Service				

Life Is On



To learn more about the Easy UPS 3S uninterruptible power supplies and EcoStruxure IT, contact your Schneider Electric representative or visit [se.com/ups](https://www.se.com/ups).

For technical support, spare parts, and service scheduling, please contact the Customer Care Center at 800-438-7373.

#### About Schneider Electric

Schneider's purpose is to empower all to make the most of our energy and resources, bridging progress and sustainability for all. We call this Life Is On.

Our mission is to be your digital partner for Sustainability and Efficiency.

We drive digital transformation by integrating world-leading process and energy technologies, end-point to cloud connecting products, controls, software and services, across the entire lifecycle, enabling integrated company management, for homes, buildings, data centers, infrastructure, and industries.

We are the most local of global companies. We are advocates of open standards and partnership ecosystems that are passionate about our shared Meaningful Purpose, Inclusive and Empowered values.

#### Schneider Electric SE

800 Federal Street  
Andover, MA 01810, USA  
[www.se.com](https://www.se.com)