

# Easy UPS 3S and 3M

Business continuity made easy

**Easy UPS 3S**  
10-40 kVA, 208/220 V

**Easy UPS 3M**  
50-100 kVA, 200/208/220 V

[se.com/ups](https://se.com/ups)

**Schneider**  
Electric

# Business continuity made easy

The Schneider Electric Easy UPS 3S and Easy UPS 3M are easy-to-install, easy-to-use, and easy-to-service 10-100 kVA 3-phase UPSs ideal for small and medium data centers, commercial buildings, buildings, non-IT, and light industrial applications.

The Easy UPS 3S and Easy UPS 3M supply power stability with robust electrical specifications and long-lasting performance to ensure your business continuity. These UPSs are exceptionally easy to install, connect, operate, maintain, and service, making them ideal for a wide range of small and medium business applications. Each EcoStruxure™ connected UPS features a wide operating temperature range and strong overload protection, all in a compact and lightweight footprint. Start-up service\* optimizes your system's performance, quality, and safety. The Easy UPS 3S and Easy UPS 3M are the easy choice for your business continuity in the data center or electrical room.



## Easy

Simplify every step of the deployment process with the UPS that is easy to select, easy to install, easy to start up, and easy to use and service.



## Competitive specifications

Enjoy high efficiency and protection against harsh environments with robust electrical specifications and ruggedizing features.



## Robust and flexible design

Fault-tolerance and parallel options keep your site resilient.

## Typical applications

- Small and medium data centers
- Non-IT and light industrial applications
- Manufacturing facilities
- Telecommunication
- Commercial buildings
- Healthcare
- Transportation



## Compact footprint

High density makes more room for your revenue-generating equipment.



## EcoStruxure connected

Anytime, anywhere monitoring and service support via smartphone.



50 kVA Easy UPS 3M for external batteries

40 kVA Easy UPS 3S for internal batteries



Next-level transparency for better-informed product choices.

Learn more about the Environmental Data Program at: [se.com/ww/en/about-us/sustainability/environmental-data-program](https://se.com/ww/en/about-us/sustainability/environmental-data-program)

\*Included with Easy UPS 3M; included for Easy UPS 3S 208V in some regions. Contact your local Schneider Electric representative for availability.

### Easy to install and start up

- Rolls into position quickly and easily
- Minimal footprint requirement with lightweight, compact form factor
- Straightforward installation
- Input, output, and bypass breakers are included
- Emergency Power Off (EPO) switch is included
- Easy Loop test verifies UPS performance before you connect your load, without the need for a load bank
- Aesthetic design blends well into your installation environment
- On-site start-up\* with Schneider Electric Field Service Representatives

### Easy to use, connect, monitor, and manage

- User-friendly display interface supports easy configuration
- With the included Network Management Card, you can:
  - Monitor UPS status remotely through a web interface
  - Monitor and manage the UPS status and performance through EcoStruxure IT's cloud-based and on-premise software suites, or through SNMP integration to the Network Management System of your choice, bringing you peace of mind.
  - Manage buildings through the BACnet protocol for integration with Building Management Systems (BMSs)

### Easy to expand

- Parallel up to 4 UPSs for capacity or redundancy

### Easy to maintain

- Front and rear access for service
- Quickly and easily replace the dust filter conveniently located behind the front door
- Schneider Electric service team available to make service easy and improve uptime with proper maintenance of your UPS and batteries

### Versatile

Easy UPS 3S and Easy UPS 3M are easy to adapt for your site requirements:

- Only pay for the options you need, with upgrade kits that enhance the resilience of the UPS
- Internal, external, and third-party battery options
- Common battery bank (Easy UPS 3M): Redundant UPSs can share the same battery bank, reducing battery costs
- Extended runtime with battery cabinets

### Robust and competitive

- Up to 94% efficiency in double conversion mode
- Minimize your power losses and cooling requirements with up to unity power factor (kW=kVA)
- Protect your data center or electrical room with these fortifying features:
  - Embedded dust filter
  - Conformal coating
  - Operating temperature up to 104°F
  - Wide input voltage range

\*Included with Easy UPS 3M; included for Easy UPS 3S 208V in some regions. Contact your local Schneider Electric representative for availability.

## Easy UPS 3S 10-40 kVA for internal batteries



Easy UPS 3S  
10-30 kVA UPS for  
internal batteries

- Dimensions (H×W×D):  
10-20 kVA:  
1400x380x928 mm  
30 kVA: 1400x380x1050 mm
- Batteries: VRLA – internal modular battery strings
- IP level: IP20



Easy UPS 3S  
40 kVA UPS for  
internal batteries

- Dimensions (H×W×D): 1400x500x1092 mm
- Batteries: VRLA – internal modular battery strings
- IP level: IP20



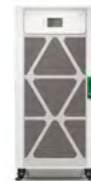
Easy UPS 3M  
50 kVA UPS for  
external batteries

- Dimensions (H×W×D): 915×360×850 mm
- Batteries: VRLA – external classic battery cabinet
- IP level: IP20



Easy UPS 3M  
60-80 kVA UPS for  
external batteries

- Dimensions (H×W×D): 1300×500×850 mm
- Batteries: VRLA – external classic battery cabinet
- IP level: IP20



Easy UPS 3M 100  
kVA UPS for external  
batteries

- Dimensions (H×W×D): 1300×600×850 mm
- Batteries: VRLA – external classic battery cabinet
- IP level: IP20

### Options

- Modular battery cabinet
- Modular battery string
- Parallel maintenance bypass panel
- Cold start kit
- Parallel kit

#### Easy UPS 3S 208V only:

- Dry contact card
- Single unit maintenance bypass panel
- Kirk key kit for Easy UPS 3S 208V maintenance bypass panel

#### Easy UPS 3M only:

- Battery breaker box
- Battery breaker kit
- Empty classic battery cabinet
- Classic battery cabinet with batteries
- Cable kit for adjacent installation of classic battery cabinet
- IP30, IP40, and IPX2 kits



Dry contact card



Modular high-capacity  
battery string



Parallel maintenance  
bypass panel



Modular battery cabinet  
for extended runtime  
requirements

# Visibility and peace of mind

## Secure Network Management Card System\*

Bolster your cybersecurity strategy with firmware updates.

As cybersecurity is a leading concern for business interruptions, the **Secure Network Management Card (NMC) System** is our commitment to deliver secure products, utilizing secure development processes, and reliable update management reducing exposure to cybersecurity attacks. The Schneider Electric Network Management Card is independently certified to the IEC 62443-4-2 standard by TÜV Rheinland. Additionally, our development processes are certified to both IEC and ISA Security Standards.



## Updating your NMC firmware matters

### Monitoring and alarming Remote monitoring

and visibility across IT infrastructure is mission critical, because it reduces the risk of unexpected issues and downtime.

### Wherever-you-go visibility

The Schneider Electric Network Management Card enables essential and secure remote monitoring and management of your Easy UPS 3S\*\* or Easy UPS 3M.

### Preventative management visibility

Connecting your devices will improve the availability, resiliency, and efficiency of your power infrastructure systems and the IT workloads they support.

### Ongoing security compliance

More and more cybersecurity breaches are linked to neglected firmware. Our new Secure NMC System will help you:

- Reduce exposure to attack and minimize downtime — protect your connected devices with the latest security updates.
- Achieve consistent compliance — protect your business with the only NMC firmware independently certified to the highest cybersecurity compliance level (IEC 62443-4-2).
- Never become out of date — During commissioning of your Easy UPS 3S or Easy UPS 3M, and during maintenance activities, Schneider Electric qualified service personnel update the NMC firmware as defined in all applicable field advisories and field modifications.

Learn more at [se.com/secure-nmc](https://se.com/secure-nmc)

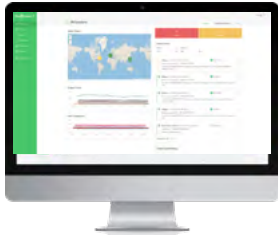
\*Requires an Advantage Plan service contract or EcoCare for 3-Phase UPS membership with on-site maintenance; contact your Schneider Electric representative for availability.  
\*\* Included with Easy UPS 3M; recommended service option for Easy UPS 3S.



## EcoStruxure IT enables resilient, secure, and sustainable data centers and IT environments

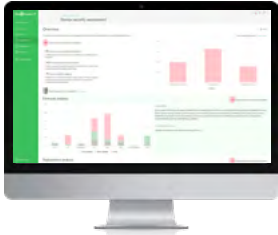
Schneider Electric's comprehensive Data Center Infrastructure Management (DCIM) solution, EcoStruxure IT, ensures business continuity by enabling secure monitoring, management, insights, planning, and modeling – whether from a single IT rack to hyper-scale IT – on-premises, in the cloud, and at the edge.

### Easy visibility



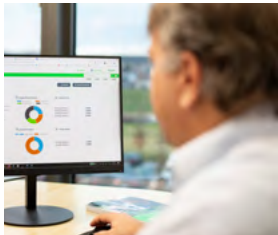
Monitoring and management software that streamlines data center device management:

**EcoStruxure IT Expert** provides you a hands-on approach with **cloud-based** monitoring software that synthesizes and analyzes performance and alert data into proactive recommendations and enables wherever-you-go visibility from any device. [Try it now.](#)



**EcoStruxure Data Center Expert** is a scalable end-to-end **on-premise** monitoring software that collects, organizes, and distributes critical device information, providing a comprehensive view of your company-wide, multi-vendor physical infrastructure.

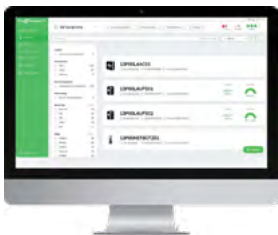
### 24/7 peace of mind



Digital services proactively monitor your critical devices:

**EcoStruxure Asset Advisor\*** for secure power and cooling provides you a hands-off approach with 24/7 remote monitoring service by the Schneider Electric Connected Services Hub experts. We monitor and troubleshoot, you relax.

### Optimized operations



Planning and modeling software transforms data into performance insights:

**EcoStruxure IT Advisor** is a data center infrastructure planning and modeling solution that provides Data Center Managers in large enterprises and colocation data centers with full insights into their infrastructure to improve profitability, sustainability, and resiliency.

\*Contact your local Schneider Electric representative for availability.

### Comprehensive on-site services

#### Start-up service\*

- Commission the installation in accordance with manufacturer's recommendations. Ensure optimal system performance from Day 1
- Includes the Secure Network Management Card System\*\* with NMC firmware updates

#### Maintenance services

- Ensure proper care of your mission-critical applications
- Preventive maintenance and response time upgrades, where available

\*Included with Easy UPS 3M; recommended service option for Easy UPS 3S.

\*\*Learn more about Secure Network Management Card System [here](#).

#### Schneider Electric-certified installation services

- Expert configuration of your equipment for optimal performance and reliability

#### Flexible service plans/on-site extended warranty

- Hassle-free system maintenance
- Improve uptime at a predictable cost

## Easy UPS 3S technical specifications

Rated Power (kVA/kW)					
	10/10	15/15	20/20	30/30	40/40
<b>Input</b>					
Input voltage (V)	208/220V (3-phase + neutral + ground)				
Frequency (Hz)	40-70 Hz				
Input power factor	>0.99				
THDI	≤4% at 100% linear load (symmetrical)				
Input voltage range	176-253 V				
Dual mains input	Yes (default: single mains input)				
<b>Output</b>					
Nominal output voltage (V)	208/220V				
Efficiency: Double conversion mode	Up to 94%				
Efficiency: ECO mode	Up to 98%				
Overload capacity in normal operation	125% for 10 minutes and 150% for 1 minute				
Output voltage tolerance	+/-1%				
<b>Communication and management</b>					
Communication interface	RS485, dry contacts, Ethernet (SNMP, Modbus, TCP/IP, BACnet)				
Control panel	Multi-function LCD, status and display console				
<b>Weights and dimensions</b>					
UPS for internal batteries, without batteries, unpackaged, shipping dimensions (H x W x D, mm)	1400 x 380 x 960 mm / 1595 x 800 x 1200 mm	1400 x 380 x 960 mm / 1595 x 800 x 1200 mm	1400 x 380 x 960 mm / 1595 x 800 x 1200 mm	1400 x 380 x 1050 mm / 1595 x 800 x 1200 mm	1400 x 500 x 1092 mm / 1595 x 800 x 1200 mm
UPS for internal batteries, without batteries, unpackaged/shipping weight (kg)	120/152	132/165	132/165	155/188	187/220
Battery string (1 string/2 modules), unpackaged/shipping weight (kg)	27 kg per module				
<b>Regulatory</b>					
Safety	UL 1778:2014 5th Edition, CSA C22.2 No. 107.3-14		Performance	IEC 62040-3	
EMC/EMI/RFI	FCC Part15 Subpart B / ANSI C63.4 2014		Environmental	IEC 62040-4	
Markings	cTUVus, FCC				
<b>Battery type</b>					
Battery type	VRLA				
Nominal DC bus (100% load)	Nominal DC bus: +/- 120 Vdc				
Charging power in % of output power (selectable)	1-15%				
<b>Environmental</b>					
Operating temperature	0°C to 40°C				
Relative humidity	0 to 95% non-condensing				
Operating elevation	0 to 1,000 m at 100% load				
Audible noise at 1 m from unit	10 kVA: ≤65 dBA at 100% load; 15-30 kVA: ≤68 dBA at 100% load; 40 kVA: ≤70 dBA at 100% load				
Protection class	IP20				
Warranty*	One year with Schneider Electric-certified Service Representative Start-up Service*				

\*Included with Easy UPS 3M; included for Easy UPS 3S 208V in some regions. Contact your local Schneider Electric representative for availability.

## Easy UPS 3M technical specifications

Rated Power (kVA/kW)	50/50	60/60	80/80	100/100
<b>Input</b>				
Input voltage (V)	200/208/220V (3-phase + neutral + ground)			
Frequency (Hz)	40–70 Hz			
Input power factor	>0.99			
THDI	<3% at full linear load			
Input voltage range	180 to 272 V at full load at 40°C			
Dual mains input	Yes (default: single mains input)			
<b>Output</b>				
Nominal output voltage (V)	200/208/220 V			
Efficiency: Double conversion mode	Up to 93.5%			
Efficiency: ECO mode	Up to 98%			
Overload capacity in normal operation	110% for 60 minutes, 125% for 10 minutes, 150% for 1 minute			
Output voltage tolerance	+/-1%			
<b>Communication and management</b>				
Communication interface	RS485, dry contacts, Ethernet (SNMP, Modbus, TCP/IP, BACnet)			
Control panel	Five inch touchscreen LCD, status, and display console			
<b>Weights and dimensions</b>				
UPS for external batteries, unpackaged/ shipping dimensions (H × W × D, mm)	915 x 360 x 850 mm / 1140 x 475 x 965 mm	1300 x 500 x 850 mm / 1500 x 625 x 975 mm	1300 x 500 x 850 mm / 1500 x 625 x 975 mm	1300 x 600 x 850 mm / 1500 x 725 x 975 mm
UPS for external batteries, unpackaged/shipping, weights (kg)	145/169	193/223	227 / 257	304/338
<b>Regulatory</b>				
Safety	IEC/EN 62040-1		Performance	IEC62040-3
EMC/EMI/RFI	IEC 62040-2		Environmental	IEC 62040-4
Markings	CE			
<b>Battery type</b>				
Battery type	VRLA			
Nominal DC Bus (100% load)	+/- 192 to +/-240 Vdc			
Charging power in % of output power (selectable)	for external batteries: 1-38.4%	for external batteries: 1-32%	for external batteries: 1-36%	for external batteries: 1-38.4%
<b>Environmental</b>				
Operating temperature	0 to 40°C			
Relative humidity	0 to 95% non-condensing			
Operating elevation	0 to 1,500 m at 100% load			
Audible noise at 1 m from unit*	50 kVA: 65 dBA at 100% load; 60-100kVA: <70dBA at 100% load			
Protection class	IP20 (up to IP42 with optional kits)			

\*Under 30°C

\*\*126-180 V with a linear derating of the load to 30%



To learn more about the Easy UPS 3S and Easy UPS 3M uninterruptible power supplies and EcoStruxure IT, contact your Schneider Electric representative or visit [se.com/ups](https://se.com/ups)

#### **About Schneider Electric**

Schneider Electric is a global energy technology leader, driving efficiency and sustainability by electrifying, automating, and digitalizing industries, businesses, and homes.

Its technologies enable buildings, data centers, factories, infrastructure, and grids to operate as open, interconnected ecosystems, enhancing performance, resilience, and sustainability. The portfolio includes intelligent devices, software-defined architectures, AI-powered systems, digital services, and expert advisory.

With 160,000 employees and one million partners in over 100 countries, Schneider Electric is consistently ranked among the world's most sustainable companies.

#### **Schneider Electric SE**

800 Federal Street  
Andover, MA 01810, USA  
[www.se.com](https://www.se.com)